

MUSCLE TOOLS

Electronic Diagnostics | Special Tools | Shop Equipment | A/C Tools

Q2 2014 Edition



New cost effective configurations of the Bosch Mastertech VCI

OEM Scan Tools Diagnostic Software (hardware only)	OEM Tools investment
GM MDI (includes SAAB)	\$ 1,995**
Toyota TechStream Light	\$ 1,590**
BMW ICOM	\$ 800**
Total Investment	\$ 4,385

*OEM Software not included.
**Approximate market price

Bosch Mastertech VCI
F00E901631



\$1699*

Also, OEM Approved J2534 Device

Get multiple tools in one, with validated flashing that meets both SAE J2534 and ISO 22900 industry standards from the OEM-level supplier to the aftermarket.

WE LEAD OTHERS FOLLOW

Robinair works hard to earn the trust of technicians and shop owners, setting the bar as the highest global standard for A/C shop service. Help us continue to lead the way online for a chance to win apparel, leak detectors and a 34788 A/C machine for your shop.



START HERE

Go to robinair.com/welead to see how Robinair is the best in the business. We've got a prize waiting for you when you use promo code **MUSCLE**.

GRAND PRIZE 34788 A/C MACHINE

Want to put a Robinair 34788 in your shop? We're giving one away to a lucky shop or technician that helps Robinair lead the way.

ROBINAIR.



robinair.com/welead

800-533-6127



Purchase a new Robinair A/C Cart (34288, 34788, 34788H or 34988) from your local distributor and receive a free A/C Leak Detector Kit (16235)



Visit www.robinair.com to redeem and see complete program details. Valid March 1 – September 30, 2014.

Genisys Touch™ Trade Up Promotion

Expires June 30, 2014

Replace your old professional scan tool* with the Genisys Touch and choose from a OTC Tech Scope or OTC TPR Tool.

Details can be found at www.otctools.com
Participate by visiting www.boschrebates.com
*Code readers do not qualify.



3857 Tech Scope (value \$1099) or 3834T TPR (value \$459)

Increase your functionality!
Buy a 3840F Automotive 2-channel Lab Scope and receive the 3820-06 Amp Probe.



3840F – Automotive 2-Channel Lab Scope

- Powerful built-in reference information for each preset test include a test procedure, normal reference signal pattern, theory of operation, and trouble shooting tips.
- True RMS GMM (Graphing Multimeter) measurements & graphs.
- Real-time comparison between actual waveforms and reference waveforms on the same screen for component testing.

3820-06 – Amp Probe

- Non-Intrusive current measurement
- Good for evaluating
 - Fuel Pumps
 - Ignition
 - Injectors
 - Electric Motors
 - Relays
 - Parasitic Losses



To redeem for your free product, visit www.boschrebates.com

Expires June 30, 2014

Wheel Service Rebates:

Gift Card Rebates:

\$500 TCE 4230, TCE 4230SFA, WBE 4230
\$750 TCE 4335
\$1500 FWA 4437, FWA 4630



Visit www.Boschrebates.com to redeem. Available in US and Canada.

April 1- June 30, 2014



Made in the USA, 1 million and counting!

OTC has forged and sold 1 Million C-Frames in the past 42 years. To celebrate our American tool heritage, we're offering a free OTC 7168 Jimmy Bar with the purchase of an OTC 7249 Ball Joint Kit

- 7249 – Includes 5 adapters, C-Frame and storage case.
- 7168 – Chrome alloy steel and heat treated to resist bending and breaking. 7/8" diameter, 30" long.



Valid February 1 – April 30, 2014.

The 7168 Jimmy Bar will ship with the 7249 order.

\$200 or \$325 REBATE
On GENISYS EVO®

PURCHASE A QUALIFYING GENISYS EVO AND RECEIVE A GIFT CARD

GENISYS EVO MODEL GIFT CARD VALUE
3874, 3874HD, 3874TPR, 3874MVCI \$325
3875 \$200



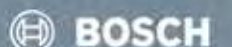
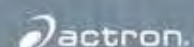
HOW TO PARTICIPATE

1. REGISTER ON WWW.BOSCHREBATES.COM
 2. PROVIDE A VALID SERIAL NUMBER
- Expires June 30, 2014.

New Ford Cam Tool Kits

Cover L4, V6, V8, V10 engine with 2V, 3V, 4V valve configurations, model years 1991 – Present.

Learn more on page 3



PROFESSIONAL SCAN COMPARISON



Scan Functionality	Genisys EVO 3874TPR	Encore 3893	Genisys Touch 3895
OEM Domestic/Asian/European Bidirectional Controls	•	•	•
OEM Domestic/Asian/European OBD II Enhanced	•	•	•
OEM Domestic/Asian/European OBD I	•	•	•
All 10 Modes of OBD II	•	•	•
Heavy Duty Standard Coverage	Option	Option	Option
Multiple Language Support	•	•	•
Internet Upgradeable	PC Required	•	•
J2534 All Makes Reprogramming	•	•	•
Vehicle Diagnostic Software Information			
Scan and Scope Troubleshooting Repair Information	•	•	•
Repair-Trac & Code-Assist DTC VIN Specific Tech Tips	•	•	•
Symptom-Assist Specific Tech Tips	•	•	•
Identifix Direc based Info	•	•	•
AutoDetect™	•	•	•
AutoID™	•	•	•
Embedded Training Videos	•	•	•
Hardware			
Battery Power	•	•	•
WiFi Wireless	•	•	•
Bluetooth Long Range Wireless	TPR Tool Wireless	•	•
Headphone Jack	•	•	•
High Resolution Touch Screen Display	•	7" Capacitive	10" Resistive
VGA Video Out	•	•	•
Stereo Speakers	•	•	•
Wireless to the car VCI	•	•	•
Diagnostic Accessories			
High Speed Scope	Option	•	Option
Bluetooth Wireless TPMS Sensor Reprogramming	Option	•	Option
5-Gas Analyzer	Option	•	•
Software			
Operating System	Lynx	Android	Windows 7
Internet Browser	•	•	•



NEW

3893

OTC Encore Deluxe Kit

The Encore is OTC's first integrated scan tool for Android, capitalizing on the operating system's speed, ease of use and functionality.

3893 kit includes: Encore, OBD II cable, USB cable, Power adapter, and hard carrying case.

F00E900977

Tech 2 Pro Optima

The Tech 2 Pro Optima a streamlined, affordable package with the following features and benefits:

- Authentic General Motors Tech 2 scan tool
- Full, dealer-level diagnostics
- Preloaded software that doesn't expire
- Enhanced diagnostics with CANdi module
- Covers power train, chassis and body systems



Made for iPod iPhone



Works with all cars and light trucks 1996 and newer (OBD II & CAN)

CP9599

U-Scan

Get the answers to the cause of the check engine light. Simply plug in the adapter in your vehicle and read the code definitions for the codes that caused the check engine light to illuminate with an Android or Apple smartphone.

Bosch brings authentic OEM diagnostics to aftermarket again with Ford VCM II

F00E9016307HH



The Ford Vehicle Communication Module II (VCM II)

- Authentic OEM diagnostics for Ford, Lincoln and Mercury Vehicles.
- Customer Flight Recorder (CFR) functionality with an optional pendant cable.
- Four LED indicators and signaling device providing technician with continuous visual as well as audible operating status.
- Enhanced 802.11 wireless that minimizes dependencies on service department wireless capability infrastructure.

F00E9016297HH*

Includes VCM II, VCM to Laptop cable, USB wireless cards, and DLC cable.

F00E9016307HH*

Includes all contents of F00E9016297HH plus CFR kit.

*Software license sold separately.

Ford and VCM II are used under license from Ford Motor Company.



3076

OTC HD Scan with Ez-Tap

- In-shop wireless capability.
- Ez-Tap Wireless Vehicle Communication Interface (VCI) works with OEM diagnostic software.
- One wireless VCI for all your diagnostic software.
- Eliminate cables and cable replacement costs.

3834T

OTC TPR Activation Tool

The OTC's TPR is a fast and simple to use stand alone TPMS activation tool!

- Lower cost kit for use with the Genisys Touch scan tool or as a stand alone tool.
- Works on vehicle TPMS sensors through 2013.
- Bright graphic display and simple navigation buttons enable vehicle selection for fast activation.
- Automatically adjusts activation output power to eliminate cross activation of near sensors.
- Tool includes a 6 month update subscription from www.tpmsupdates.com



3857

OTC Tech-Scope

The "Tech-Scope" is a 2-channel high speed lab and ignition oscilloscope. It has a millimeter function that can be used as a stand alone device or in conjunction with PC scan. Use it anywhere an oscilloscope or multimeter is needed for fast and accurate automotive diagnostics. This scope is for the technician who wants an all-purpose scope to accurately test all electrical and electronic components on a vehicle. The unique features of this scope strongly compliment the PC scan diagnostic tools.

OTC-700A

OTC 700 AMP Power Supply Battery Charger



- A power supply for Flash Reprogramming is a device that connects to the vehicle's battery and outputs a designated supply of clean DC power.
- Constant voltage output selectable from 13.0 to 14.8V DC
- Output current up to 70 amps
- Fully automatic operation for 12V batteries
- Digital volts and amps display



3829

OTC J2534 Reprogramming Tool

- J2534-1 and J2534-2 Pass through module
- Standard and custom OEM protocols and pin-selections
- Wireless with advanced networking functions
- Does both emission and non-emission related reprogramming

Includes: Vehicle Communication Interface, power supply adapter kit, OBD II cable, power supply cable, USB cable, J2534 training CD, quick start guide, one-year warranty.



3829-700A

OTC Midrange VCI / Power Supply

The 3829-700A offers both a wireless VCI and Power Supply adjustable voltage (13.0 – 14.8V). The VCI does both emission and non emission reprogramming. The power Supply has adjustable voltage (13.0 – 14.8V) settings with automated output amperage up to 70A. This allows the OTC unit to adapt to more OEM applications. The OTC Power Supply also doubles as a fully automatic battery charger for recharging standard, AGM, deep cycle and gel type batteries.



3880X

OTC Automotive Inspection Camera

- Large 3.5" inch high resolution color screen for optimal viewing.
- Detachable 36" camera snake with position hold shaft.
- Images and video are recorded on the included SD card and can be viewed on the camera display or transferred to a computer.

OTC Leak Tamer 30-Day Satisfaction Guarantee

It's a straight forward guarantee. Buy it, try it for 30 days, if you don't find that it helps you get your job done you can return it to your participating authorized dealer and get your money back.



6522

OTC EVAP – Leak Detection System

- Pinpoint leaks with Smoke and dye
 - UltraTraceUV® dye deposits at exact location of a leak
 - Finds leaks that smoke alone won't find
 - It's the only OEM-Approved dye solution
- Compact light weight design
 - More powerful diagnostics in smaller package



F00E900291

Bosch SMT 300 – Smoke Machine Tester

The Bosch SMT 300 Smoke Machine Tester is a full featured device which allows today's shop to perform various types of vehicle leak testing. The compact design and full complement of accessories makes this an ideal fit for any repair shop needing a workhorse of a smoke tester. It has built in safety features for EVAP testing. Suitable for leak testing of any closed system found on today's vehicles.



3415

OTC CAN Test Box

Breakout Box for Scan Tools

- Connects between Diagnostic Link Connector (DLC).
- Connect leads for increased diagnosis, analysis, and monitoring.

Useful Functions

- LEDs display signal detection
 - Flashing LEDs indicate ECU activity.
- Magnifies DLC
 - Allows monitoring of OBD II data lines.
- Monitors voltage
 - Displays battery voltage.
 - Alarm warning when voltage drops below 11.6v or rises above 15v.



3596J

OTC Oil Light Reset Tool

- The 3596J kit helps eliminate the need to take the vehicle to the dealer or use an OEM scan tool to reset oil service lights.
- Electronic tool set includes the adapters and interface module required to reset the oil service lights on Volkswagen, Audi, Mercedes Benz, BMW, and Volvo.
- The included manual details Oil Light Reset tool procedures as well as the manual reset procedures for domestic and import vehicles.
- The new Oil Light Reset Tool now gives you the ability to update the tool vehicle coverage by connecting to a PC with future update kits.

3596J-UPD – OTC Oil Light Reset Update Kit.

Genisys EVO® Software

3421-146 2013 Super Bundle Kit

- Everything needed to update a Genisys
- Includes 2013 Domestic/Asian, 2012 European, and preloaded System 5.0 memory card



3421-147 2013 Software Loyalty Kit

- Designed for customers already have System 5.0
- Includes 2013 Domestic/Asian and 2012 European



3421-148 2013 System 5.0 4GB Memory Expansion Kit

- Pre-loaded with 2013 application software
- New applications require a separate purchase



Nemisys Software

3774-37 OTC Nemisys 2013 Domestic/Asian software

OEM based 2013 Domestic and Asian coverage back to 1983 for engine, body, and chassis systems. Includes the Code-Assist™ Library of experienced-based Confirmed Fixes™ from Identifix® and Data / Sensor Info repair information.



Genisys Touch HD

3895-07 OTC Genisys Touch Heavy-Duty Standard

- Class 4 - 8 Heavy Duty Standard truck Coverage
- Read / erase codes and view live engine data



Heavy Duty Truck

3940-HD OTC DMM Kit for HD Truck

Professional grade multimeter kit for heavy duty truck repair

- OTC 550 Series Auto Ranging Multimeter**
- Powerful professional grade test functions:
- Frequency
 - Duty Cycle
 - Diode & Continuity Tests



Mid-Range Amp Probe

- Non-intrusive AC/DC current measurement
- Measurement range of 2-600 amps AC/DC
- Covers HD truck components and electric motors

Extended Length Test Leads

- 5 ft. test leads to provide improved reach
- Detachable probes allow use with amp probe

Hybrid Multimeter

F00E900101 Bosch MMD 540H Hybrid Multimeter

The Bosch MMD 540H Hybrid Multimeter is a CAT safety rated, auto ranging digital multimeter designed for use in diagnostics of electronic circuits. Whatever your shop services: automotive, fleet, motorcycle, marine or small engine, the MMD 540H has the capability to keep up with your business.

- CAT III (1000v) safety rating for hybrid vehicle circuits.
- Peak, Min/Max readings as fast as 1 millisecond.
- Higher amperage test ranges, up to 20 Amps.
- Inductive RPM clamp for conventional and DIS ignition systems.
- Fused diagnostic test leads for safe trouble shooting (up to 20 amps) at the circuit fuse location.
- K-Type thermocouple for quick temperature measurement.
- Large LCD display with bright back lighting and auto shutdown.



3111PRO OTC Trilingual Scan Tool OBD II, CAN, ABS & Airbag

Fix it Faster! Expanded Domestic and Asian ABS & Airbag coverage. Now with over 4.3 million verified fixes at the touch of a button! Compatible with all 1996 and newer cars and light trucks.

Airbag (SRS) & ABS coverage: 1996-2010 GM, Ford and Chrysler 1996-2009 Toyota, Honda, Hyundai and Nissan.

Enhanced code request For GM, Ford, Chrysler, Honda, Hyundai, Nissan and Toyota vehicles.

Displays additional live engine data: Now over 300+ possible PIDs. View engine RPMs, coolant temperature, Oxygen sensor readings and more!

AutoID™ Automatically retrieves VIN from vehicle and decodes to Year/Make/Model.

Component Locator Text descriptions indicate where the vehicle component is located.

3108N

OTC Pocketscan® Code Reader

- View LIVE engine data.
- Automatically reads DTC's.
- Erases DTCs.
- Reads and displays MIL status.
- Reads and displays I/M monitors.



3109N

OTC Trilingual OBD II/EOBD and CAN Scan Tool

- AutoID™ - Automatically selects the vehicle so you don't have to on most 2000 and newer vehicles.
- Graph live data.
- Read and erase diagnostic trouble codes.
- Read and display LIVE sensor data.
- Read and display freeze frame data.



Battery

3167 OTC Battery and Electrical System Diagnostic Tester

- Digital circuitry precisely controls battery test loads to accurately determine battery conditions.
- Tests both flooded lead acid and AGM/gel cell batteries accurately—down to 1 volt state of charge.
- Tests vehicle starting and charging systems with minimal user interaction.
- Tests all 6- & 12-volt batteries with a 50-2000 CCA operating range.
- Scales: CCA, CA, AHR, MCA, JIS, DIN.
- Removable/ auto-sensing 3' leads.



3183

OTC Digital Battery Tester

Speed. Accuracy. Reliability. These are the cornerstones behind the technology in our digital battery testers. No. 3183 tests 12-volt batteries (125-1400 CCAs) and analyzes by measuring multiple parameters within the battery to deliver accurate results. A live voltmeter allows easy starting/charging system testing. Its bright, 4-digit LED display indicates the battery's good/bad status, voltage, and available CCAs. It even compensates for cold temperatures.



0684400732

Bosch BAT 131 - Battery & Starting/Charging System Tester

The BAT 131 is the benchmark in battery testing, and is designed for testing all types of 6V and 12V starter batteries, including lead-acid, gel and fleece batteries/AGM. The rugged, exterior housing is specially designed to survive the harshest workshop conditions and molded perfectly for one-handed operation.

The load free test procedure provides fast, precise and reliable measurement results between 100 and 2000 CCA. In addition to CCA, the BAT 131 can also measure and display to CA, MCA, DIN, SAE, EN, IEC and JIS standards.



New Ford Cam Tools

6690

Ford Master Cam Tool Kit

- Contains 40 tools to ensure correct cam timing when servicing timing belts, chains, head gaskets, or other valve train repairs.
- Covers L4, V6, V8, V10 engine with 2V, 3V, 4V valve configurations, model years 1991 - Present.
- Application guide with diagrams and blow molded case included.



6690-1

Ford Cam Tool Kit Update

- Contains 18 tools, with case locations for addition of the popular 6489 Ford Cam Tools, making a 6690 Kit.
- Ford Cam Tools ensure correct cam timing when servicing timing belts, chains, head gaskets, or other valve train repairs.
- 6690-1 tools cover L4, V6, V8, V10 engines with 3V & 4V valve configurations, model years 2004 - Present.
- Application guide with diagrams and blow molded case included.



6680

Ford 3.9L 4V Cam Tool Set

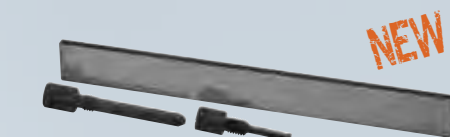
- The 6680 is designed to service Ford 3.9L 4V V8 engines used in 2000-2006 Lincoln LS cars.



6682

Ford 3.5L & 3.7L 4V Cam Tool Set

- Ford 3.5L 4V V6 engines used in 07-12 Edge & MKZ, 07-09 MKX, 08-12 Taurus & Taurus X & Sable, 10-12 Fusion, 10-12 MKZ & MKS & MKT, 11-12 Explorer & F150.
- Ford 3.7L 4V V6 engines used in 09-12 MKS, 10-12 MKT, 11-12 Mustang & F150 & MKZ & Edge.



6486A

Ford 2.0L, 2.3L, 2.5L 4V Cam Tool Set

- Ford 2.0L 4V L4 engines used in 94-12 multiple vehicle platforms.
- Ford 2.3L 4V L4 engines used in 05-08 Escape Hybrid, Mariner Hybrid.
- Ford 2.5L 4V L4 engines used in 09-12 Escape & Mariner, 10-12 Fusion & Fusion Hybrid, 11-12 MKZ.



6489

Ford Cam Tool Kit

- The OTC Ford cam tools ensure correct cam timing when servicing timing belts, chains, head gaskets, or other valve train repairs.
- Ford cam tool kit containing 22 cam tools covering 1992 thru 2012 for over 50 applications, in a molded storage case.



6488

Ford Cam Tool Kit

Ford cam tool kit for 1997 thru 2011 4.0L Explorer/Mountaineer SOHC V6 engines. Kit contains tool Nos. 6478, 6479, 6480, 6481, 6482, 6484, 6485, and molded storage case.

6681

Ford 4.6L, 5.4L, 6.8L 3V Cam Tool Set

- The 6681 is designed to service;
- Ford 4.6L 3V V8 engines used in 05-10 Mustang, 06-10 Explorer, 09 F-Series trucks.
- Ford 5.4L 3V V8 engines used in 04-12 F-Series, 05-10 Expedition, 05-12 Lincoln Navigator.
- Ford 6.8L 3V V10 engines used in 05-12 F-Series 250-350-450.
- Note: Tool set covers 1 cylinder head application.



6683

Ford 1.6L 4V Cam Tool Set

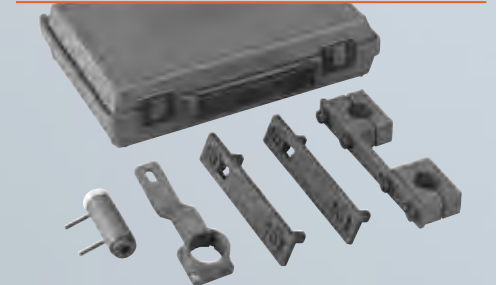
- Works on Ford 1.6L 4V L4 engines used in 11-12 Fiesta.



6487

Ford Cam Tool Kit

Ford cam tool kit for 1992 thru 2012 4.6L, 5.4L V8, and 6.8L V10 engines. Contains tool Nos. 6476, 6477, 6009, 6020, and molded storage case.



6498

Ford 4.6L & 5.4L 4V Cam Timing Kit

Saves time; all tools required for camshaft timing are in one kit. Set Includes:

- 525216 - Camshaft positioning tool
- 525217 - Camshaft holding tool
- 525219 - Crankshaft positioning tool
- 525218 - Secondary chain tensioner tool

6684

Ford 3V Valve Spring Compressor

- Designed to compress valve springs on a Ford 3V 4.6L & 5.4L.
- Similar to OE p/n 303-1039.



OTC Wire Service Tools

4470 Butane-Power Flameless MicroTorch

- Cordless 650° (1250°F) flameless heat.
- Refillable fuel cell uses standard butane lighter fluid (butane NOT included).



4472 Cordless Solder Tool Kit

- Includes: Soldering iron, conical tip 2.4 mm, chisel tip 2.4 mm, hot knife tip, deflector tip, sponge, wrench, and soldering wire.



4472-1 – Soldering iron only.

4460 2-Piece Electrical Connector Separator Tool



4461 Terminal Release Tool Set



1/4" & 3/8" Cable Cutters

- 4476 – 1/4" cable cutter.
- 4477 – 3/8" cable cutter.



4467 Automatic Wire Stripper

- Comes with adjustable depth gauge (8mm to 12mm).



4468 9" Self Adjusting Wire Stripper

- Strips insulating sheathing from wires ranging from 10 ga. to 22 ga.



5912 Crimpwell™ Angled Crimping Pliers

- Universal crimping design accommodates soft wire – solid or stranded – 10-22 AWG.
- Cutting feature included for quicker preparation.
- 9" (228mm) in length, with protective grips to increase leverage and secure crimp.



5950A CrimPro™ 4-in-1 Angled Wire Tool

- Compact 7-inch design.
- Gripping nose.
- Crimper, 12-20 AWG insulated & non-insulated wire.
- Stripper – strips 12-20 AWG wire.
- Cutter – ability to make cuts both above and below pivot.



5950S CrimPro™ 4-in-1 Wire Tool

- Compact 7-inch design.
- Gripping nose.
- Crimper, 12-20 AWG insulated & non-insulated wire.
- Stripper – strips 12-20 AWG wire.
- Cutter – ability to make cuts both above and below pivot.



5947 Butt Connector Kit (240 Piece)

- Two styles - insulated and non-insulated. Three sizes of each style: 12-10 AWG, 16-14 AWG and 22-18 AWG.



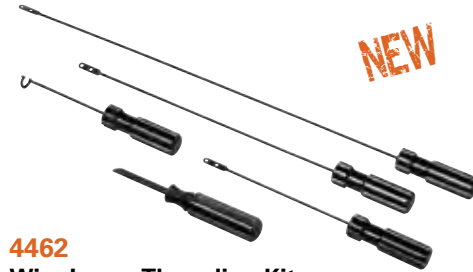
4813 Heat Shrink Tubing Set (171 Piece)

- Protection and insulation for solder connections and components. 2 to 1 shrink ratio with flame or heat gun.



4814 Waterproof Heat Shrink Tubing Set (106 Piece)

- Waterproof protection and insulation on solder connections and components. Adhesive lined inner wall to seal out moisture. 3 to 1 shrink ratio with flame or heat gun.



4462 Wire Loom Threading Kit

The 4462 Wire Loom Threading Kit from OTC is a clever grouping of wire fishing tools for the automotive technician. Whether general wiring R&R - or adding Gauge Packs, Sound Systems, Vehicle Security and Camera Systems, these tools simplify placing the wiring within the protection of existing wiring looms, without cutting tape or zip ties and without damage to other wires.

There are 3 wire pulling tools in 15", 10" and 5.5" lengths for common automotive applications, the grommet insertion tool allows the wire to be captured within the tool to hold once it is placed, placed so you can grab from the opposite side of the firewall - and the pigtail tool assists when building a new harness on the workbench.



4676PN Windshield Wiper Puller and Nozzle Needle Combo

- The puller removes wiper arms on many foreign and domestic cars and light trucks.
- Will not damage wiper arm or hood cowl during removal.
- Simply place puller feet under wiper arm and tighten forcing screw against wiper shaft.
- The Nozzle Needle makes quick work of clearing obstructions from the windshield washer spray nozzle.
- Easily pierces corrosion or remove blockage.
- The barrel is knurled for grip and control.
- Threaded end caps keep the needle points covered when not in use.



SmartTech™ Gloves

OTC SmartTech™ Technician Gloves

- Works with touchscreen technology.
- Washable synthetic leather palm with padding ensures comfort and a secure grip.
- Polyester and Lycra material around fingers offer a durable lightweight cover that stretches for a great fit.
- PVC cushions help protect knuckles from injury due to slippage.
- Comfortable polyester back panels include webbing for improved ventilation.



- 5801SGLV-M – Medium.
- 5801SGLV-L – Large.
- 5801SGLV-XL – Extra large.

5931 External Torx® Plus Socket Set (8 piece)

Set includes one each of the following:

No.	Size	Sq. Drive
5931-6	6EP	3/8"
5931-7	7EP	3/8"
5931-8	8EP	3/8"
5931-10	10EP	3/8"
5931-11	11EP	3/8"
5931-12	12EP	3/8"
5931-14	14EP	3/8"
5931-16	16EP	3/8"



5942 XZN Super Short Socket Bit Set (8 piece)

Set includes one each of the following:

No.	Size	Sq. Drive
5942-4	SP4	1/4"
5942-5	SP5	1/4"
5942-6	SP6	1/4"
5942-8	SP8	1/4"
5942-10	SP10	3/8"
5942-12	SP12	3/8"
5942-14	SP14	3/8"
5942-16	SP16	3/8"



7175 OTC 3-Piece Indexing Pry Bar Set

- Sizes 10", 12" and 15".
 - Indexable to 180° for better access.
 - 14 locking positions for leverage in multiple applications.
 - Knurled handle assures a sure grip.
 - Meets or exceeds ANSI specifications for pry bars.
- 7172 – 10" Indexing Pry Bar
7173 – 12" Indexing Pry Bar
7174 – 15" Indexing Pry Bar

OTC Lubrication Service

2300 Professional Lever Grease Gun

- Heavy duty die cast aluminum grease gun head.
- Grease gun head fitted with automatic air bleeder.
- Large diameter piston for working in cold.
- Built-in variable stroke for greasing fittings with limited access.
- Includes 6" bent steel extension, easy access 24" high pressure grease hose and 3 jaw slim coupler.
- 10,000 PSI.
- For use with 14 oz. grease cartridge.



2302 Mini Lever Grease Gun

- Die cast aluminum grease gun head.
- Lever action with best in class performance, delivers 6000 PSI.
- Includes bent 6" steel extension with 3 jaw slim coupler.
- For use with 3 oz. grease cartridge.



2310 Air Operated Grease Gun-Continuous Flow

- Heavy duty die cast aluminum grease gun head.
- Grease gun head fitted with automatic air bleeder.
- Larger pumping chamber, honed for rapid operation.
- Includes 6" bent steel extension, easy access 24" high pressure grease hose and 3 jaw slim coupler.
- 4800 PSI.
- For use with 14 oz. grease cartridge.



2332 Quick Connect Greasing Accessory Kit

- 7 piece Quick Connect Greasing Accessory Kit
- Includes 1 each of the following quick connect Accessories:
 1. Recessed lube adapter.
 2. Angle lube adapter.
 3. Narrow needle nose adapter.
 4. Seal off dispenser.
 5. Right angled grease coupler.
 6. Heavy duty hose fitted with spring guard and slim coupler.
 7. Grease injector needle 1.42" long x 18G.



2340 Heavy Duty Grease Gun Holder

- Great grease gun storage accessory.
- Can be mounted to walls, machinery, or heavy equipment.
- Design to retain your grease gun in high vibration environments.
- Works with all standard 14 oz. grease guns and 16 oz. suction guns.



2352 Lever Action Bucket Pump

- Fits 5 gallon pails.
- Includes 12" drum cover.
- 3 position handle for different fluid viscosity.
- Steel discharge spout.
- Supplied with 5' hose.
- Up to 4.6 oz. / stroke.
- For use with transmission differentials and heavier oils.



2304 Professional Pistol Grease Gun

- Heavy duty die cast aluminum grease gun head with integrated die cast fixed handle.
- Grease gun head fitted with automatic air bleeder.
- Large diameter piston for working in cold.
- Built-in variable stroke for greasing fittings with limited access.
- Includes 4" straight steel extension, easy access 24" high pressure grease hose and 3 jaw slim coupler.
- 7500 PSI.
- For use with 14 oz. grease cartridge.



2334 Grease Fitting Unblocker

- Opens clogged grease fittings and loosens hardened grease joints.
- Comes with grease coupler.
- Includes flexible hose to reach difficult areas.
- Built in hand guard for safe usage.
- Includes two spare piston seals.



2350 Lever Action Drum Pump

- Fits 15 – 55 gallon drums.
- Telescoping suction tube.
- 3 Position Handle for different fluid viscosity.
- Extra tall pump cylinder allows smaller bucket to be placed under spout.
- Brass piston rings for extended wear resistance.
- Threaded outlet spout for use with common hoses.
- Up to 14 oz. / stroke.
- For use with oil based fluids, heating oils, motor oils, heavy and light oils, diesel and kerosene.



OTC Drain Plug Pro™

5961HD OTC Heavy-Duty Drain Plug Pro™

- For Agricultural, Commercial, and Heavy-Duty Vehicle Applications.

5961 OTC Drain Plug PRO Kit

- Standard drain plug attachment.
- Low profile drain plug attachment.
- 17mm hex attachment for internally driven drain plugs.
- 5/16" bit driver attachment.



Ford 6.0L Service Tools



- #### 6770 Ford 6.0L Diesel Service Tool Kit
- 8 of our popular 6.0L Diesel Service Tools in one convenient kit.
 - Properly test vehicle systems for leaks and blockage.
 - Safely remove and re-install harnesses without damage.
 - Fuel Filter Cap Wrench, Glow Plug and Injector Harness Release Tools.
 - Oil Line Disconnector, EGR Removal Tool.
 - IPR Controller, IPR Socket Tool and Fuel Rail Pressure Adapters.

ENGINE / DRIVETRAIN TOOLS



6918 Ford Spark Plug Remover Kit, Triton 3V

- Unique design helps prevent breakage by locking the plug porcelain core to the plug hex allowing it to turn as one complete unit.
- Will also pull plug porcelain core if plug hex only is removed.
- Detailed Instructions to maximize success rate.

Works on:
 Ford 4.6L 3V V8 engines used in 2005–2008 Mustang, 2006–2008 Explorer.
 Ford 5.4L 3V V8 engines used in 2004–2008 F-Series, 2005–2008 Expedition, 2005–2008 Lincoln Navigator.
 Ford 6.8L 3V V10 engines used in 2005–2008 F-Series 250-350-450.

6675 Timing Belt Adjuster Wrench

- Designed to fit the adjuster on Chevy Aveo, 2002 - 2011.
- Similar to J-42492-A.



7217 Axle Nut Socket

- Designed to fit the axle nut on Chevy Topkick/Kodiak, 2003 - Newer.
- Similar to J-44275.



6694 Axle Seal Installer

- Designed to install the axle seal on GM Trucks with 10-1/2" ring gear.
- Similar to J-24428-A.



6754 Diesel Fuel Pressure Gauge

- Designed to test fuel pressure on GM Duramax diesel engines.
- Similar to J-44638.



6749 GM Engine Barring Socket

- Designed to rotate engine on a Mack E7 and Cat 3208.
- Similar to J-38587-A.



6579 Transmission Disconnect (2 pack)

- Designed to disconnect transmission lines on Ford Taurus/Explorer 2005 and newer.
- Similar to OE p/n 307-569.



GM Duramax Injector Pullers

- Designed to pull injectors on a GM Duramax 6.6L engines.

6778 From 2001 - 2004, Similar to J-44639.

6779 From 2005 - 2011, Similar to J-46594.



7302 Brake Caliper Pin/Bolt Remover Set

- Allows for removal of inboard facing pins or bolts to be removed from the outboard side of the brake caliper or vehicle component.
- For caliper pin removal, simply back the pin bolt out half way and place the tool over the bolt shank to strike against the bolt head.
- Fits all sizes of pins or bolt shanks ranging from 1/4" (6mm) to 5/8" (16mm).
- Set includes 7302-1, a striking version and 7302-2, air hammer adapter. Also sold separately.

5758 Hub Cap Removal Tool

- Unique slide hammer design eliminates prying against the wheel finish and potential scratches.
- Opposite end has a rubber bumper used to re-install cap with a simple tab.



5776 Preset Torque Wrench Set;

These color coded click torque wrenches are pre-set to the most common lug nut torque settings, making them perfect for tire shops. Highly durable design can hold up to the toughest tire shop demands.

- No need for adjustments
- Durable satin finish
- 1/2" Drive, 36 tooth
- Quick release ratchet head
- Perfect for Wheel / Tire shop
- Accuracy better than ±3% CW

Sold Individually:

5776-1 – Preset Torque Wrench, 1/2" 65 lb-ft

5776-2 – Preset Torque Wrench, 1/2" 80 lb-ft

5776-3 – Preset Torque Wrench, 1/2" 100 lb-ft

5776-4 – Preset Torque Wrench, 1/2" 120 lb-ft

5776-5 – Preset Torque Wrench, 1/2" 140 lb-ft



6720 Flare Nut Locking Plier Set (3 pcs.)

- Designed for use on new or damaged flare nuts that have been rounded or rusty.
- Fits Standard or Metric nuts and bolts.
- Angled jaws allow for clearance around frames and bulkheads.

6720-1 – Covers 1/4" to 5/16" (6mm to 8mm)

6720-2 – Covers 3/8" to 7/16" (9mm to 11mm)

6720-3 – Covers 1/2" to 5/8" (12mm to 16mm)



6720-4 – Covers sizes 11/16" to 7/8" (17mm to 22mm). NOT included in 6720 set. Fits nut sizes found on power steering and AC lines.



6722 Brake Spring Locking Plier

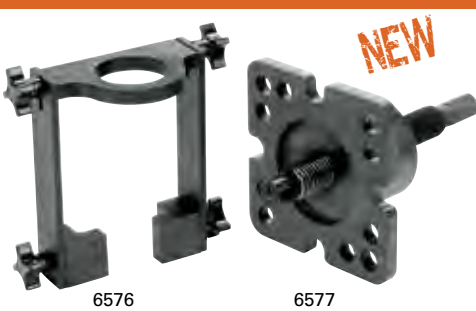
- Designed to compress parking brake springs and hold them in a compressed position while servicing the brake cable or other brake components.
- Ford and Dodge applications.



7832 GM Torsion Bar Unloader

- Required to safely release the tension on the front suspension torsion bar to service the front suspension.
- Larger design to cover the newer GM truck applications.
- Application: 2011 & newer HD C/K trucks.

OTC Hub Tool



6576S Dodge Hub Service Set

- Removes stubborn hubs when nothing else will, using 2 methods.
- First, the 6576 Hub Pressing Tool is used to press off the hub with the aid of the power steering. The tool locates spacers between the U-joint yoke and axle housing. Unique design makes this a one person operation to remove the hub with the bearing in tact.
- In the event the Hub Pressing Tool does not budge the hub, the 6577 Hub & Bearing Housing Puller is used. This may separate the bearing, but the unique dual pattern design fits both the wheel hub and bearing housing, capable of applying 20 tons of force.

6576 – Hub Pressing Tool, Fits Dodge 3/4 & 1 Ton 4WD 1994-Present applications.

6577 – Hub & Bearing Housing Puller, Fits Dodge 3/4 & 1 Ton 4WD 1994-Present applications. Also fits GM and Ford 4WD Truck hubs.

6576S includes both 6576 & 6577

OTC Tire Service



5752 Wheel Loader & Tipper

- The new ergonomic wheel loader and tipper integrates two very helpful tools into one.
- The wheel loader feature allows a technician to lift various sizes and types of wheels and tires in and out of a truck bed.
- The wheel tipper feature allows the technician to flip a wheel over during tire service, or just tip up a wheel and tire to move.
- Both of these features allow the technician to easily and safely service and lift wheels by eliminating the need to bend over to lift, dramatically reducing the risk of back injury.
- Works on steel or aluminum wheels, inflated or deflated.

5750 Wheel Tipper

- This ergonomic wheel tipper allows the technician to flip a wheel over during tire service, or just tip up a wheel and tire to move.
- Allows the technician to easily and safely service wheels by eliminating the need to bend over to lift, dramatically reducing the risk of back injury.
- Works on steel or aluminum wheels, inflated or deflated.



5729 Inside Dual Wheel Bead Breaker

- Breaks the inner bead on the outside tire without removing the wheel from the truck.
- Unique design places pressure in the exact location required to quickly and easily break the inner bead.
- Simply pull up on the handle and the bead is forced off the wheel rim.



5700A Accessory Tire Bead Seater

- Provides the ability to control the blast with both hands firmly on the nozzle assembly, increasing effectiveness and safety.
- Includes all the fittings to adapt the hose to most surge tanks found on tire changers. A tank hook is also included to hang the nozzle when not in use.
- Long 6-1/2' hose will reach all positions on the tire.

5747 Tire Valve Stem Punch Kit

- Quickly and easily remove old valve stems from a wheel with a swing of a hammer.
- Simply place the punch tip on the inside of the valve stem and strike the punch to force the old valve stem out of the wheel.
- The unique punch tip is heat treated and shaped to remove all types of valve stems.
- Includes hand protecting handle with interchangeable 5" and 8" punch adapters for car and truck wheel applications.



Tire Service Hammers, Indestructible Handle

- Drop-forged head is induction-hardened for long life, and contains steel locking plates that are specially bonded to ensure the head never becomes loose.
- Use top hook as a wheel tipper; sledge end hook to drag tire into position.
- Bead breaking wedge has grooves and a convex shape to help drive tire lube into the bead.

5789ID-520 – Head Weight 5 lb., Handle Length 20".

5789ID-1032 – Head Weight 10 lb., Handle Length 32".



Handle never needs replacement "Lifetime Warranty".

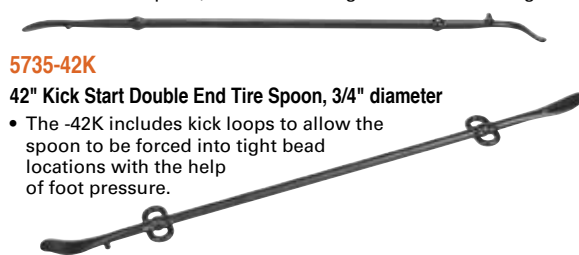
Tire Spoons

5735-42 42" Double End Tire Spoon, 3/4" diameter

- Same great design as the original double end mount/demount tire spoon, but in a 42" length for added leverage.

5735-42K 42" Kick Start Double End Tire Spoon, 3/4" diameter

- The -42K includes kick loops to allow the spoon to be forced into tight bead locations with the help of foot pressure.



TCE 4435THP

Features & Benefits:

- Tabletop system with 24" internal and 22" external clamping.
- Ability to accommodate up to a 43" diameter assembly.
- 25% faster inflation system than benchmarked competition.
- 2 stage variable speed operation for fast operation and quick turnaround.
- Pneumatic tilt tower.
- 40% increase in bead breaker power versus the previous model.
- 30% less mount/demount flexion versus benchmarked competitive offerings.
- Extreme structural rigidity for reduced flexion even for the most difficult UHP or RFT.
- 3 position adjustable bead breaker.
- Equipped with the TCE 320 Assist Assembly and bead breaker board to reduce operator effort on the toughest tire & wheel combinations.

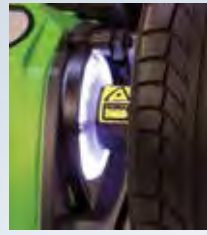


1694100246

Bosch WBE 4430 Premium Monitor Display Wheel Balancer

Features & Benefits:

- 3D automatic data entry.
- Monitor display wheel balancer.
- Laser for precise weight placement.
- LED light ring illuminates the work area where you need it most.
- Easy and intuitive operation with visual monitor display program.
- Weight location intuition eliminates menu selections and saves time.
- Fast 6 second cycle time.
- Auto-locking arm puts tape weights in the correct location every time.



LED light ring illuminates the work area



OCL 8850

Bosch Brake Lathes Faster. Better. Stronger

Features and Benefits:

- Standard adapters for 95% vehicle coverage in standard package.
- Two-speed settings for initial and finish cuts.
- Bidirectional drive unit, eliminating the need to "flip" the lathe.
- Design saves time, eliminates need for full disassembly of brake system.
- Compact design fits in tight wheel wells.
- Mounts to the same machined surface as caliper.



571939

Get the TCE 4225 and the Helper Assembly and Save Big!

Features & Benefits

TCE 4225

- Classic swing arm design.
- Outside clamping capacity up to 20".
- Advanced mount/demount head with tire iron slot assist with low profile tires.
- 3 position bead-breaker arm accommodates large wheels and tires.

Helper Assembly

- Following arm supplies additional pressure while mounting difficult tires.
- Lower disc effortlessly lifts bottom bead during dismounting.



Helper Assembly



TCE 4225

OTC Equipment



5300

OTC Stinger 3-Ton Jack Pack

- This jack pack includes a 3-ton service jack (5303) with lifting range of 5-3/4" to 18-1/2" and a pair of 3-ton jack stands (5372) with a base of 8-1/4" x 7-1/2" and height range of 12" to 17-11/16".

2-1/4 - / 3-Ton Hydraulic Service Jacks

- Flanged upper body edge increases strength to resist twisting.
- Built-in safety overload system/ prevents use beyond their rated capacity.
- Rear swivel casters, for easy maneuvering and positioning.
- These jacks have 4" saddle dia., 21" overall reach, 6-1/2" frame height, 39-1/2" handle length, and a floor space of 13-1/2" x 24-1/2".

5302 – 2-1/4-ton capacity with a lifting range of 5" to 18".

5303 – 3-ton capacity with a lifting range of 5-3/4" to 18-1/2".



1780

OTC Stinger 22-Ton Capacity Jack Stands

- Height range is 13-7/8" to 19-7/8".
- Saddle size 3" x 3-3/4".
- Pin-style (non-ratchet) three positions, 3" intervals.
- Reinforced collar to meet newest ANSI PALD test standards.
- 11" flat base prevents sinking into the surface.

OTC Stinger 3-Ton & 6-Ton Jack Stands

- Formed and welded steel base for strength; self-locking ratchet handle cannot be released under load. Durable baked enamel finish resists corrosion.
- Stands conform to ANSI PALD load rating standard; factory tested before shipment.

5372

- Pair of 3-ton jack stands.
- Base: 8-1/4" x 7-1/2".
- Height range: 12" to 17-11/16".

5373

- Pair of 6-ton jack stands.
- Base: 11-9/16" x 10-3/8".
- Height range: 15-5/8" to 23-11/16".

1784D

- Pair of 12-ton jack stands.
- Base: 12-1/8" x 10-7/8".
- Height range: 17-1/2" to 27-1/2".

1577

OTC Stinger Low Profile Fluid Receiver

- Fluid capacity: 7.5 gallons.
- Constructed of polyethylene plastic for heavy-duty use—yet, only weighs 13 pounds.
- Low profile, only 5" high, it easily slides under passenger cars.
- Suitable for cooling system repair jobs—can be used for antifreeze.
- Includes splash screen to prevent spillage and splashing.



5286

OTC Portable Diesel Particulate Filter Cleaner

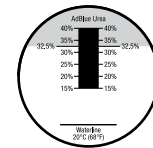
- The advent of the 2010 Tier 4 cleaning requirements created the need for a lighter, more portable cleaning system which can be taken into the field to clean filters at the point of service.
- Lightweight and Highly Portable - ideal cleaning system for use in the shop or on a service truck.
- Flexibility - clean DPF's from 6" to 15.5" in diameter using shop or compressed air of at least 100 PSI.
- Fully Automated Operation - once started, the cleaning process can be completed unmonitored, freeing up technician to simultaneously do other work in the shop.
- Focused Air Jet Technology™ - concentrates a precise high pressure stream of air directly into every cell.
- Maximum Efficiency - OTC's unique floating puck prevents "splash back," which maximizes the volume of air entering each cell.
- Easy Maintenance - contains no internal filters that require user maintenance and its rugged design provides maximum durability.



5025

Diesel Exhaust Fluid (DEF) Refractometer

- SCR & EPA 2010 EPA regulations require all diesel engines manufactured on or after January 1, 2010 to meet lowered NOx emissions standards.
- Scale: 0.5% line graduations 32.5% Indicated Scale 15-40% Waterline & 20 Deg C
- Application: The refractometer is a portable, precision, optical instrument used for measuring the Diesel Exhaust Fluid (DEF) concentration. When a liquid sample is placed on the prism, the light passing through it is bent, and shows on the scale to indicate the DEF condition.



OTC 9300 Stinger Series Bottle Jacks give you lifting range from 2 to 50 tons.

- With a forged base and cylinder to ensure strength and eliminate leaks, you can lift it all. Featuring a chrome piston pump and ram for additional rust resistance.

- 9302** – 2-Ton
- 9303** – 3-Ton
- 9305** – 5-Ton
- 9308** – 8-Ton
- 9312** – 12-Ton
- 9314** – 8-Ton Shorty
- 9320** – 20-Ton
- 9322** – 20-Ton Shorty
- 9330** – 30-Ton
- 9350** – 50-Ton

3095

Heavy-Duty Digital DEF Tester

- Digital Display
- Displays % UREA
- Displays washer fluid freeze point

The OTC 3095 makes testing a simple and quick process for an operator or technician.



5281

OTC DPF Thermal Processing Unit

- Designed to facilitate the cleaning of filters – with high amounts of wet soot, and unburned hydrocarbons.
- Pre-programmed thermal profile controls temperature 'ramp up' and 'cool down' to reduce the risk of cracking the DPF.
- Includes "pre-treat" cycle for oil-soaked filters.
- Holds temperature constant for two hours to ensure complete regeneration of filter.
- Built-in electronic safety lock prevents unauthorized opening of the door when temperatures exceed 200 degrees F.
- Large chamber accommodates various DPF sizes and shapes. Front access door allows for easy access to the thermal chamber.



2510A

OTC Stinger Air/Hydraulic Pump

- 10,000 PSI air/hydraulic pump.
- Internal relief valve.
- Two-stage release mechanism.
- Pump, hold, or release load with pedal control.
- 98 cu. in. usable capacity.
- 3/8 NPT oil port.



OTC Heavy Duty

5105B

1,100 lb. Capacity High-Lift Dual Wheel Dolly

- Effortless air-powered hydraulic lift system for a variety of applications.
- 0 to 42" lifting range.
- Six-inch lateral adjustment.
- Tilt adjustment of +15° to -8° ensures easy alignment.
- Features four swivel casters, two locking, for enhanced mobility.



5292

27.5-Ton Capacity Under-Axle Jack

- Features class-leading 27.5 ton capacity.
- Robust design with completely sealed piston.
- New lever design and pneumatic release valve for more precise release control.
- Power return allows lowering with no load.
- Includes two height adapters for flexibility.
- PALD compliant.
- Minimum retracted height (with saddle only): 8-1/4".
- Maximum extended height (with screw extended and large adapter): 21-3/8".
- Stroke: 4.9375".
- PSI range: 90 to 175.



5018A

Truck Clutch and Flywheel Handler

- Replaces 14" & 15-1/2" clutch assemblies weighing up to 250 lbs.
- 13" low point enables access below side faring.
- Linkage raises load from horizontal to vertical position.
- 360 degree swivel head.



1590

10-Ton Air Lift

- Adjustable lifting saddles and an extra wide stance for extra stability.
- 10 tons of lift at 200 PSI air pressure.
- Lifting range is 13" to 52".
- Automatic mechanical safety catch engages in five height positions.



1591A

10-Ton Capacity Combination Air Lift and Support Stand

- Air lift can also be used as a support stand when servicing a vehicle.
- Height range of 16-1/8" to 49-1/4".
- Removable handle and 8' air hose.
- Covered by Lifetime Marathon Warranty®.



20-Ton Truck Ramps

- Long, retractable T-handle enhances mobility.
- Non-skid rubber matting prevents slippage during use.
- Durable, heavy-duty rubber wheels.
- Capacity per pair is 20 tons
- Covered by OTC Lifetime Marathon Warranty®.

5268 – 20-ton truck ramps handle up to 10" tread width.

5269 – Wide 20-ton truck ramps handle up to 16" tread width.



OTC Transfer Tanker

- Draining oil from a large displacement engine and getting it to your bulk storage container is a snap.
- Used oil is collected in the 15-gallon reservoir, and then rolls smoothly on 4" free-wheeling casters to your storage location.
- Pump moves five gallons a minute through the 8-foot transfer hose.
- Low profile, measures 7-1/2" from floor to top of reservoir.
- Can also be used for transferring antifreeze.

5077 – Transfer Tanker equipped with an electric pump (No. 528093).

5097 – Transfer Tanker equipped with a pneumatic pump (No. 529966).

OTC Service Jacks

6- & 10-Ton Capacity Air/Hydraulic Service Jack

- Large steel front wheels for durability
- Rear swivel casters make spotting the jack easy
- Spring-loaded handle can be locked in three positions
- Covered by OTC Lifetime Marathon Warranty

5106 – 6-Ton air/hydraulic service jack Lifting range 4-3/4" to 23-1/4", reach 87", 45" handle

5110 – 10-Ton air/hydraulic service jack Lifting range 6-3/4" to 26-7/8", reach 93", 47" handle



2- & 3-Ton Service Jack

- Ergonomic handle for user comfort & easy mobility.
- Foot pedal for quick approach of the lifting saddle to load. Built-in tray for fasteners and tools.
- CE certified, PALD compliant.
- Covered by OTC Lifetime Marathon Warranty®.

5202 – 2-ton service jack. Min. height 3"; Max. height 18-1/4".

5203 – 3-ton service jack. Min. height 5-1/2"; Max. height 20-1/2".



6- & 10-Ton Heavy-Duty Service Jack

- Ergonomic handle for user comfort & easy mobility.
- Foot pedal for quick approach of the lifting saddle to load. Built-in tray for fasteners and tools.
- CE certified, PALD compliant.
- Covered by OTC Lifetime Marathon Warranty®.

5206 – 6-ton HD service jack. Min. height 6-11/16"; Max. height 22-13/16".

5210 – 10-ton HD service jack. Min. height 6-11/16"; Max. height 23-13/16".



1533

OTC Aluminum Racing Jack Pack

- 1532 Jack lifts two tons and weighs only 43 lbs.
- Five pumps to max. height – 18".
- Low profile 3-1/2" makes it perfect for ground hugging, high performance cars.

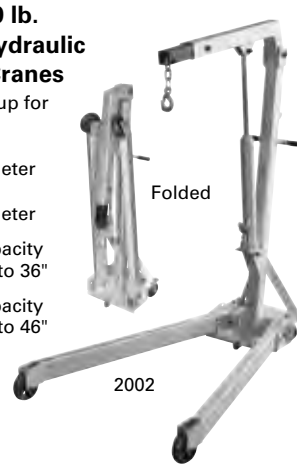
- 1582 – 2-ton aluminum jack stands.
- 10-1/4" min. height, 15-1/4" max. height.
- Made from aircraft-grade aluminum.

2,000 and 4,000 lb. Capacity Air/Hydraulic Folding Floor Cranes

- Both cranes fold up for compact storage
- Front wheels are 3-1/2" in diameter
- Rear casters are 5-7/8" in diameter

2002 – 2,000 lb. capacity with a reach of 24" to 36"

2004 – 4,000 lb. capacity with a reach of 25" to 46"



6,000 lb. Capacity Heavy-Duty Mobile Floor Cranes

- Three boom positions for capacities of 4,000, 5,000, and 6,000 lbs for large engines and engines/transmissions combined.
- Usable reach of nearly 92".
- Boom swivels for vertical and lateral positioning.
- Legs extend to straddle extremely large tires.

1814 – 6,000 lb capacity crane with electric/hydraulic pump and remote control.

1813 – 6,000 lb capacity crane with two-speed hydraulic hand pump.



OTC Rear Suspension Bushing Tool

- Removes FAS II Airliner Freightliner Rear Suspension bushings in a fraction of the time of traditional methods.
- Saves on average 45 minutes per bushing (4 per vehicle) on flat rate of 1.5 hours per bushing.

4244 – Freightliner Rear Suspension Tool.

4245 – Freightliner Rear Suspension Tool – Master Kit includes 2510A Air/Hydraulic Pump.



4295

Wheel Stud Service Kit

- Installation done by pushing on the head, eliminating the need for threaded adapters.
 - Reduces number of adapters required
 - Reduces damage to studs, hubs and bearings
 - Increases ease of use
- Remove and install 10 studs in only 10-15 minutes
- Can be powered with an impact wrench, no hydraulic power source required.
- No need to remove hub from vehicle.



OTC Stinger 4- & 10-Ton Collision Repair Sets

- Competitively priced yet high quality.
- Sets include single-speed hydraulic hand pump, hose, and ram.
- Components snap together for quick setups for pushing, spreading or pulling.
- Components include ram flat base, extension tubes, spreader, end pieces.
- 1513B – 4-ton collision repair set includes hand pump and ram with 4" stroke.
- 1515B – 10-ton collision repair set includes hand pump and ram with 6" stroke.



5130

OTC 1,000 lb. Capacity DriveMaster™ Driveline Lift

- Low profile of 7".
- Lift range: 23" to 30".
- Pivoting pump handle +/- 15° tilt in each direction.
- Includes 553516 differential mounting adapter. Mounts easily using existing bolt patterns. Fits the most common differentials currently in use on Category 7 and 8 Heavy Duty Trucks. Including: Eaton, Fuller, Rockwell, Meritor, Spicer, International, and Mack.
- CE certified, PALD compliant.

Optional adapter kits

- 558382 – Auxiliary box adapter.
- 561949 – Light duty transmission adapter.

OTC Power Train Lift

- These lifts will handle engine and transmission assemblies, gas tanks, drive axle assemblies, engine/transaxle assemblies, electric bus batteries, and more.
- Scissors-type design allows access to all four sides of a component.
- Lifting and lowering motion controlled by hand-held remote.
- Table tilts ±15° side-to-side, or fore and aft.
- 20" x 32" tilt table.
- Larger casters accommodate heavy loads.



1595 – 2,500 lb. Capacity Lift. Powered by a quiet, 110V electric/hydraulic pump. Minimum height is 29" with an 80" maximum height. A 30 ft. long retractable extension cord is mounted to the frame.

5285 – 1,650 lb. Capacity Lift. Air / hydraulic operation – Foot control pump (2510A) with hose allows movement around lift. Minimum height is 29" with an 72" maximum height.

OTC Presses

Hydraulic Bottle Jack Presses

- Bottle jacks have an overload valve built into them.
- 1823A – 12-ton press, 6-1/4" stroke with a OTC bottle Jack.
- 1824A – 20-ton press, 7-1/2" stroke with a OTC bottle Jack.



1794A

Air-Assisted 1,000 lb. Capacity High-Lift Transmission Jack

- Air-assist primary stage to rapidly raise the head with foot pedal.
- Hydraulic secondary stage for precise control with hand pump.
- Release knob to lower load.
- Easy-to-grip knobs.
- Wide base with 4" wheels for stability.
- Safety overload system.
- Height range: 37-58" to 76-1/2".
- Max forward tilt: 42 deg.
- Max backward tilt: 46 deg.
- Max side tilt: 12 deg either side.

4002

Single-Speed Hydraulic Hand Pump

- This single-speed pump is ideal for single-acting rams. Developing up to 10,000 psi operating pressure, the pump operates horizontally or vertically in the "head down" position. Fingertip control provides instant release or pumping action. Has a built-in safety overload valve.



MUSCLETOOLS

Robinair A/C Diagnostics



34288



34788



34788-H



34988

Features:	34288	34788	34788-H	34988
Fully-Automatic Function: Program to recover, vacuum, leak test and charge without operating panel valves.		X	X	X
Automatic Dye Inject: Gives the user the ability to use the machine to inject UV dye into a vehicle's A/C system.				X
Automatic Oil measure & Inject: The machine will automatically determine how much lubrication oil needs to be injected back into the A/C system based on how much oil was taken out during recovery.				X
Automatic Oil Drain: A display reminds you to empty the graduated container to show the amount of oil to replace.		X	X	
Oil Inject: Less than 1% cross-contamination.		X	X	
Refrigerant & Oil Database: For North American market vehicles 1994 - 2007 (updates available mid-2008).		X	X	X
A/C system flush: Flushes a vehicle's A/C system with refrigerant eliminating any residual oil or other liquid. (Flushing adapters - not included)				X
Save & Print before and after service data: Allows the user to store before and after service information by vehicle and print this information to provide to a customer.				X
Indicator light and notification alarm: Notifies the user when service is complete, or if a problem has occurred.		X	X	X
Vacuum Leak Test: Monitors level after evacuation, informs of possible leak.	X	X	X	X
Automatic Air Purge: Eliminates damaging air without monitoring gauges or opening valves.	X	X	X	X
Automatic Refrigerant Refill: Maintains a user-selectable amount of refrigerant in an internal vessel and signals with it's time to change supply tank, no monitoring required.		X	X	X
Vacuum Feature: Defaults to 15 mins, programmable up to 99 mins. "Remaining time" is displayed.	X	X	X	X
Display: Multilingual	X	X	X	X
Refrigerant Charging: Select a charge mode from high or low side.		X	X	X
Refrigerant Management System: Displays refrigerant use and monitors remaining filter life. Prompts appear when 1/3 of filter life remains.	X	X	X	X
Capable of servicing high voltage electric compressor A/C systems			X	

Multi-Purpose and Coolant Fluorescent Dye

MULTI-PURPOSE (engine oil, transmission) 16244, 16245

COOLANT 16885, 16890



16244

6 applications



16885

6 applications



16890

32 applications



16245

32 applications

16009

DiscovR Refrigerant Identifier

- Fast and Accurate. "Pass" and "Fail" lights clearly show if refrigerant is pure enough to be recovered.

Product Specifications:

Refrigerant: R134a
 Input Power: 12 VDC
 Accuracy: Pass/Fail - 95% pure R134a
 Air Detection: Yes
 Approvals: SAE J1771, UL/C



TIFZX

Heated Pentode® Refrigerant Detector

- Heated Pentode® sensor technology
- Tri-color visual leak size indicator
- Detects all CFC, HFC, HCFC's including R-12, R-22, R-123, R-134a, R-404a, R-407a, R-408a, and R-410a.



22791

InfraRed Refrigerant Leak Detector

- Advanced infrared sensor designed to last a minimum of 10 years.
- Three sensitivity levels down to 0.15 oz./year.
- Automatically recalibrates in highly contaminated areas to help pinpoint the exact location of the leak
- Won't trigger on oil or moisture.



Robinair Manifolds

2-Way Brass Manifold



44150

Dual R12/134a Kit

45111

R134a Manifold Hose Kit

2-Way Aluminum Manifold



48510 R134A

- 90° Manual couplers
- 72" R134a Hose Set (1/2" ACME x 14mm)

47150 Dual R12/134A

- 90° Manual couplers
- 72" R134a Hosea Set (1/2" ACME x 14mm)
- 72" R12 Hose Set (1/2" ACME x 1/4" MFL)

Economy Manifolds



48134A

R134 brass manifold, hose set and service couplers

49134A

R134 aluminum manifold, hose set and service couplers

75700

Coolant Exchanger

- Our 10 minute exchange process means no more waiting for the engine to warm up!
- Our "Engine Off" feature removes pulleys, belts, and fan blades from the safety equation.



75240

Coolant and Battery Refractometer

Coolant scale range: 32° F/0° C to -60° F/-51° C.



Econo-Clean Coolant Service Accessories

- 75134 – Coolant test strips.
- 75234 – 3-way heavy-duty truck coolant test strips.



92500

Transmission Fluid Exchanger

You can have the vehicle in and out of the service bay in less than 20 minutes!

Operate through dipstick only, cooler line or a combination of the two!

- Exchange accuracy approx. +/- 1/4 qt.
- 32-qt. supply tank; 34-qt. waste tank.



UV Leak Detection Kits

- The easiest and most accurate gun available today.
- No guesswork – a pre-measured application every time.
- One squeeze injects a pre-measure amount (1/8 oz.) of dye. No more adding too much dye.



16234

16235

A/C Fluorescent Dye



16240

64 applications
One 8 oz. bottle

16241

64 applications
One 8 oz. bottle

16242

12 applications
Twelve 1/4 oz. bottles

16243

24 applications
Six 1 oz. bottles

TIF9010A

Slimline Programmable Scale

- Completely portable refrigerant scale, battery powered, can be used with all refrigerants.
- Extreme accuracy.
- 110 lb./50 kg capacity.



Robinair Vacuum Pumps

VacuMaster® Single Stage Vacuum Pumps

- 15115 – 1.5 CFM Vacuum Pump.
- 15310 – 3 CFM Vacuum Pump.
- 15510 – 5 CFM Vacuum Pump.



VacuMaster® 2-Stage Vacuum Pumps

- 15150 – 1.5 CFM Vacuum Pump.
- 15300 – 3 CFM Vacuum Pump.
- 15500 – 5 CFM Vacuum Pump.



CoolTech® Vacuum Pumps

- 15434 – 4 CFM Vacuum Pump.
- 15600 – 6 CFM Vacuum Pump.



Not responsible for errors in description. / 14-37 Q2 2014 Edition, Printed in U.S.A.