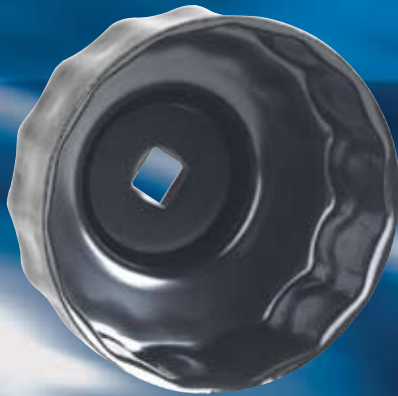


OTC Oil Filter Sockets

Domestic & Import Sockets

6901

Similar to
Kent-Moore
No. J-29142.



GM Oil Filter Socket—74 mm, 15 Flutes

- Works on 1999–2002 Olds Intrigue and 2001–'02 Olds Aurora
- This is a required tool to remove the oil filter cap from the oil pan to access the filter cartridge.

No. 6901 – GM oil filter socket, 74 mm, 15 flutes. Wt., 9 oz.



6903

Ford / Mazda and Toyota Oil Filter Socket—75.6 mm, 14 Flutes

Ford

- Designed at 75.6 mm to fit the new 2.3L 4-cylinder engines.
- Works on Ford Fusion, Mercury Milan, Mazda 3, Mazda 5, and Mazda 6.

Toyota

Avalon

2005–'07 V6 3.5L (2GR-FE), 1995–2004 V6 3.0L (1MZ-FE)

Camry

2007 V6 3.5L (2GR-FE), 2004–'06 V6 3.3L (3MZ-FE),
1994–2006 V6 3.0L (1MZ-FE)

Camry Solara

2004–'07 V6 3.3L (3MZ-FE)

Highlander

2004–'07 V6 3.3L (3MZ-FE) — also works on the hybrid
version of this engine

2001–'03 V6 3.0L (1MZ-FE)

RAV4

2006–'07 V6 3.5L (2GR-FE)

Sienna

2007 V6 3.5L (2GR-FE)

2004–'06 V6 3.3L (3MZ-FE)

1998–2003 V6 3.0L (1MZ-FE)

No. 6903 – Ford / Mazda and Toyota oil filter socket,
75.6 mm, 14 flutes. Wt., 4 oz.

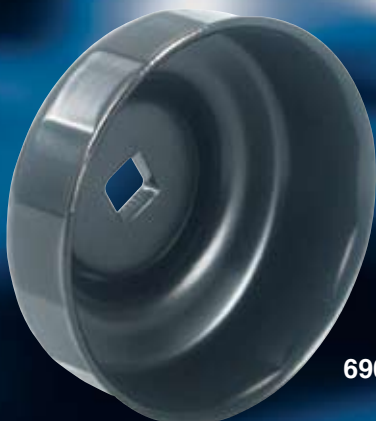


6904

Hyundai and Kia Oil Filter Socket—88.22 mm, 15 Flutes

- Works on 2006 Hyundai Sonata and Santa Fe 3.3L V6 engines.
- Works on 2007 Hyundai Azera, Veracruz and Entourage 3.8L V6 engines.
- Works on 2007 Kia Amanti, Sedona and Sorrento 3.8L V6 engines.

No. 6904 – Hyundai and Kia oil filter socket, 88.22 mm, 15 flutes.
Wt., 4 oz.



6905

Subaru Oil Filter Socket—66.5 mm, 14 Flutes

- Socket fits between the exhaust manifold and the oil filter for easy removal and installation of the filter.
- Works on 2003–newer Subaru vehicles having the 2.5L 4-cylinder, turbo engine.

No. 6905 – Subaru oil filter socket, 66.5 mm, 14 flutes. Wt., 4 oz.

07-50 ©2007 SPX Corporation. All rights reserved. Because of ongoing product improvements, we reserve the right to change design, materials, and specifications without notice. Product shipped may differ from photo(s) shown.