



655 Eisenhower Drive
Owatonna, MN 55060 USA
Telephone: (507) 455-7000
Tech. Serv.: (800) 533-6127
Fax: (800) 955-8329
Order Entry: (800) 533-6127
Fax: (800) 283-8665
International Sales: (507) 455-7223
Fax: (507) 455-7063

Form No. 100300

Parts List for:

1750
1750A
D05223ST



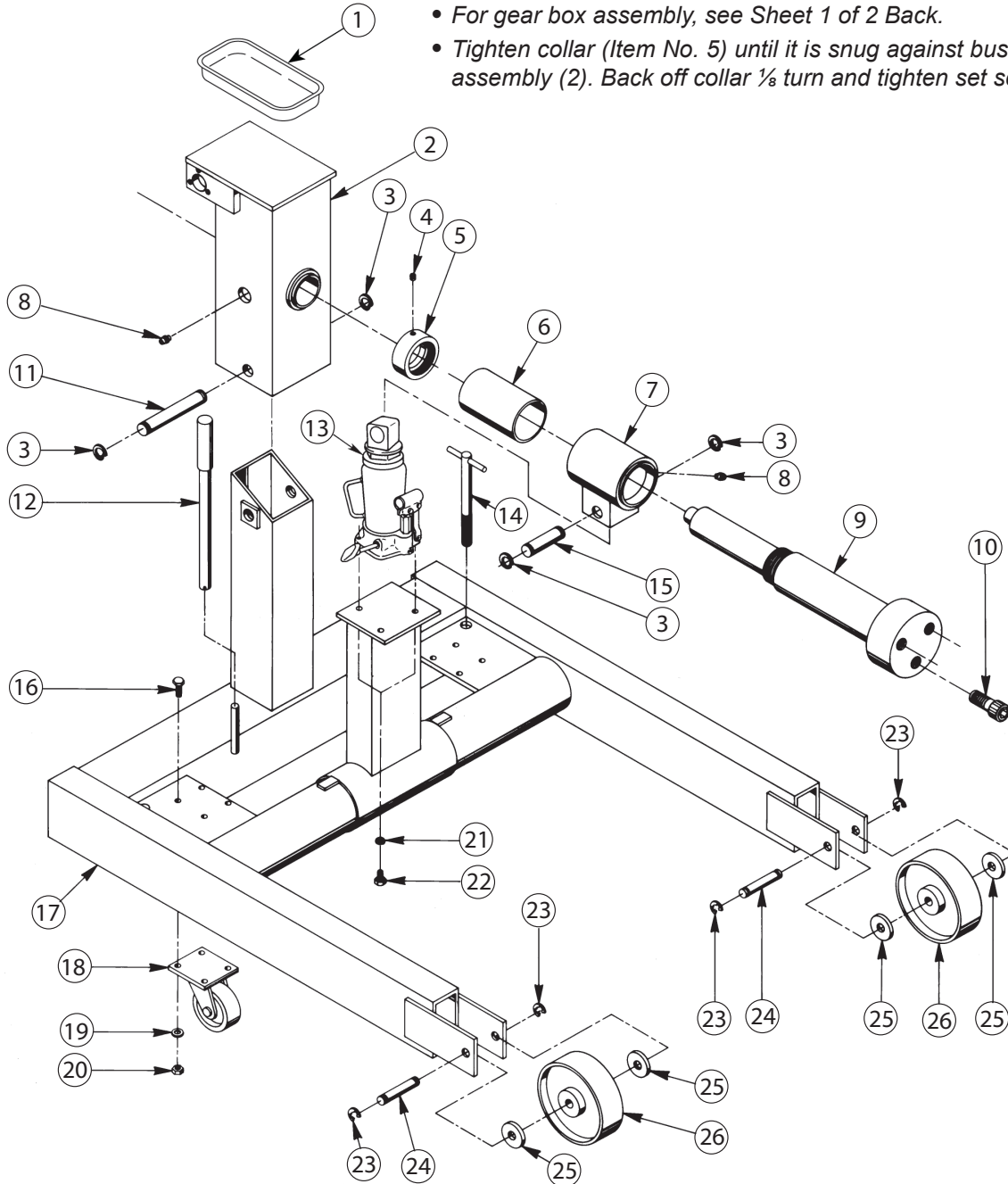
Original Instructions

Heavy-Duty Engine Repair Stand

Maximum Capacity: 2722 kg (6000 lbs.)

Notes:

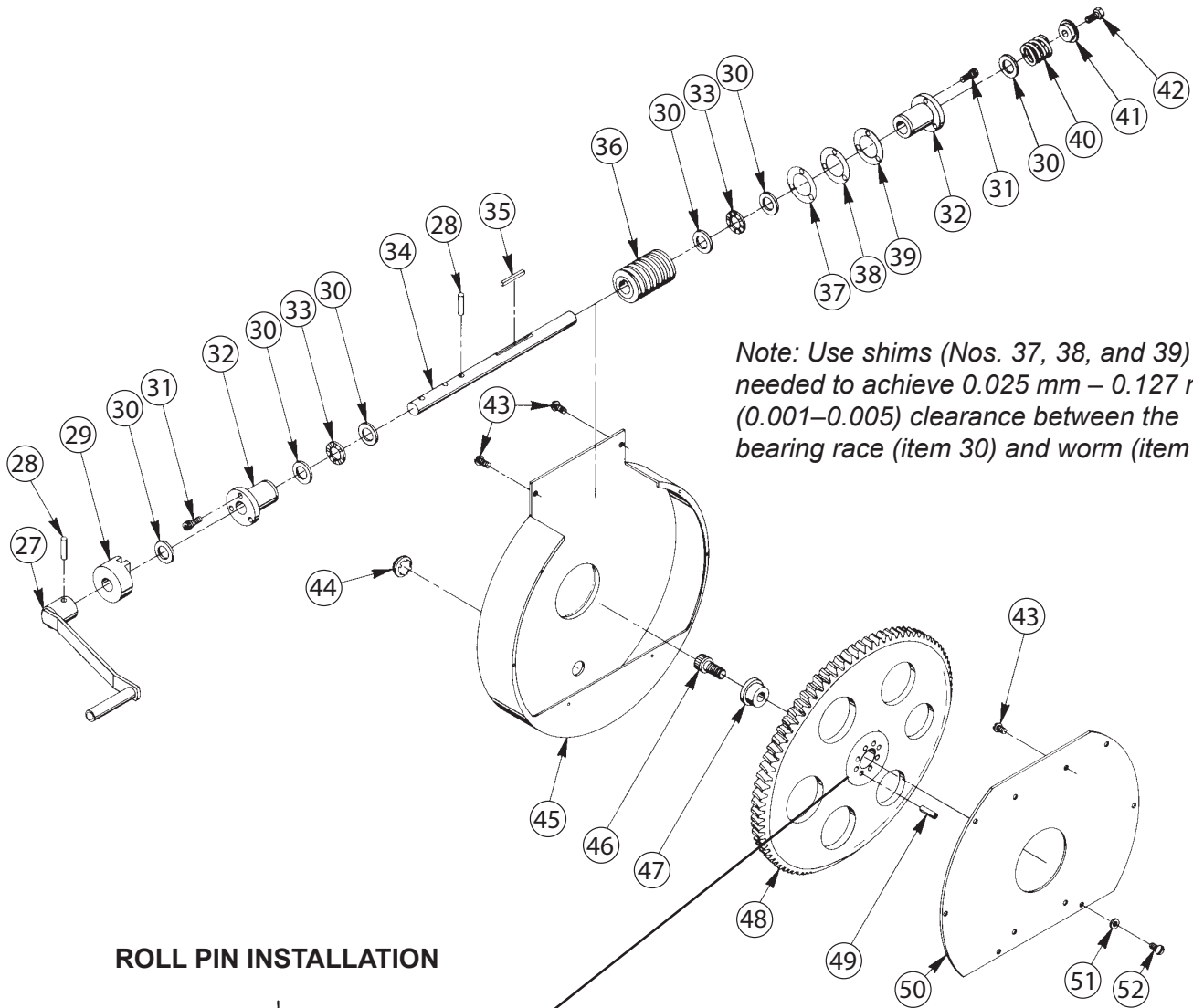
- For gear box assembly, see Sheet 1 of 2 Back.
- Tighten collar (Item No. 5) until it is snug against bushing in tube assembly (2). Back off collar $\frac{1}{8}$ turn and tighten set screw (4).



Sheet No. 1 of 2

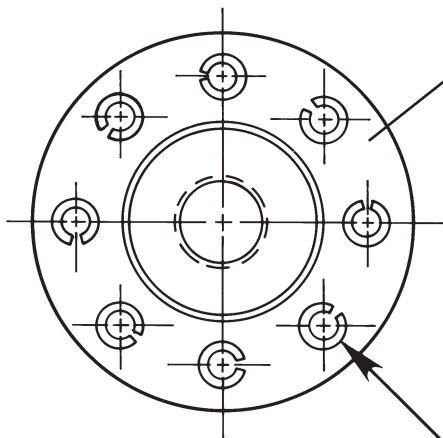
Issue Date: Rev. F, September 30, 2014

Gear Box Assembly



Note: Use shims (Nos. 37, 38, and 39) as needed to achieve 0.025 mm – 0.127 mm (0.001–0.005) clearance between the bearing race (item 30) and worm (item 36).

ROLL PIN INSTALLATION



Insert roll pins (item 49) into the hub of the worm gear (item 48) with the slot of each pin oriented as shown.

Replacement Parts Kits

No. 564185—Fastener Kit

Item		
No.	Qty.	Description
4	1	Set Screw— $\frac{1}{4}$ -20 x 12.7 mm ($\frac{1}{2}$ in.) lg.; torque to 8–10 N•m (70–90 in. lbs.)
10	3	Socket Hd. Cap Screw—1-8 x 63.5 mm ($2\frac{1}{2}$ in.) lg.
21	2	Lockwasher—used with 9.5 mm ($\frac{3}{8}$ in.) bolt
22	2	Hex Hd. Cap Screw— $\frac{3}{8}$ -16 x 25.4 mm (1 in.) lg.
Parts Not Shown		
-	4	Hex Nut
-	4	Hex Hd. Cap Screw
-	4	Hex Hd. Cap Screw— $\frac{5}{8}$ -11 x 2.75-in. lg.

No. 564186—Hardware Kit

Item		
No.	Qty.	Description
3	4	Retaining Ring—used with 28.6 mm ($1\frac{1}{8}$ in.) shaft
11	1	Pin
15	1	Pin
-	1	Abrasive Strip [3.65 m (12 ft.) non-skid safety]
-	1	Warning Decal
-	1	Warning Decal

No. 564187—Front Wheel Kit

Item		
No.	Qty.	Description
23	4	Retaining Ring—used with 19.1 mm ($\frac{3}{4}$ in.) shaft
24	2	Pin—19.1 mm x 100 mm ($\frac{3}{4}$ x 3-15/16)
25	4	Spacer
26	2	Wheel—203.2 mm (8 in.) dia.

No. 564188—Caster Kit

Item		
No.	Qty.	Description
16	8	Hex Hd. Cap Screw— $\frac{3}{8}$ -16 x 31.8 mm ($1\frac{1}{4}$ in.) lg.
18	2	Swivel Caster
19	8	SAE Washer—used with 9.5 mm ($\frac{3}{8}$ in.) bolt
20	8	Nut— $\frac{3}{8}$ -16 UNC

No. 564189—Shim Kit

Item		
No.	Qty.	Description
37	1	Shim
38	1	Shim
39	2	Shim

No. 564190—Gear and Worm Kit

Item		
No.	Qty.	Description
28	2	Roll Pin—7.9 mm x 38.1 mm ($5/16$ x $1\frac{1}{2}$ in.) lg.
35	1	Key
36	1	Worm
48	1	Worm Gear
49	8	Roll Pin—7.9 mm x 25.4 mm ($5/16$ x 1 in.) lg.

No. 564191—Gear Box Hardware Kit

Item		
No.	Qty.	Description
31	6	Socket Hd. Cap Screw— $\frac{1}{4}$ -20 x 22.2 mm ($\frac{7}{8}$ in.) lg.; torque to 15–17 N•m (130–150 in. lbs.)
40	1	Compression Spring—37.3 mm O.D. x 37.3 mm lg. (1-15/32 O.D. x 1-15/32 in. lg.)
41	1	Spring Retainer
42	1	Hex Hd. Cap Screw— $\frac{3}{8}$ -16 x 25.4 mm (1 in.) lg.
43	6	Round Hd. Screw— $\frac{1}{4}$ -20 x 12.7 mm ($\frac{1}{2}$ in.) lg.
44	1	Snap Plug
46	1	Socket Hd. Cap Screw— $\frac{5}{8}$ -11 x 31.8 mm ($1\frac{1}{4}$ in.) lg.; torque to 203–271 N•m (150–200 ft. lbs.)
47	1	Cap
51	6	Washer—shakeproof, No.10
52	6	Self-tapping Screw—No. 10 x 12.7 mm ($\frac{1}{2}$ in.) lg.

No. 564192—Bearing Kit

Item		
No.	Qty.	Description
30	6	Needle Thrust Bearing Race
33	2	Needle Thrust Bearing

No. 564193—Gear Cover Kit

Item		
No.	Qty.	Description
45	1	Plastic Gear Cover
50	1	Back Plate

Replacement Parts

Item No.	Part No.	No. Req'd.	Description
1	4490	1	Magnetic Tray
2	60551	1	Gear Housing
5	38375	1	Collar
6	204531	1	Tube
7	43265	1	Bushing Housing
8	16696	2	Grease Fitting
9	51306	1	Shaft Assembly
12	302889	1	Handle Assembly
13	53780	1	12-Ton Jack
14	204522	2	Locking Screw Assembly
17	60539BL2	1	Engine Stand Base
27	38370	1	Handle
29	38369	1	Lock
32	204657	2	Bushing Assembly
34	38428	1	Worm Shaft

Parts Not Shown

556608	1	OTC Logo Decal
43385	1	Warning Decal
MB990607-01	1	Torque Wrench Socket
205061	1	Engine Mounting Plate (used with 1750A)
205466	1	Engine Adapter Plate (used with D05223ST)
556609	1	Load Rating Decal

Refer to any operating instructions included with the product for detailed information about operation, testing, disassembly, reassembly, and preventive maintenance.

Items found in this parts list have been carefully tested and selected by OTC. **Therefore: Use only OTC replacement parts!**

Additional questions can be directed to the OTC Technical Services Department.