



SPX Corporation
655 Eisenhower Drive
Owatonna, MN 55060-0995 USA
Phone: (507) 455-7000
Tech. Serv.: (800) 533-6127
Fax: (800) 955-8329
Order Entry: (800) 533-6127
Fax: (800) 283-8665
International Sales: (507) 455-7290
Fax: (507) 455-7063

Form No. 105152

Operating Instructions for:

7375

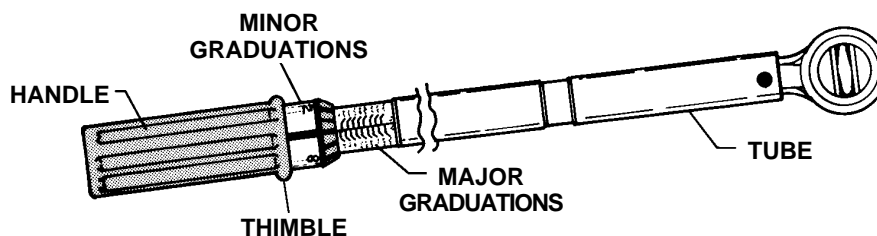
7377

7378

7379

ACCUTORQ™ CLIKKER TORQUE WRENCHES

The Klikker Torque Wrenches are torque-limiting tools. A steel case encloses a power spring, a torque signaling mechanism, a ratchet drive tang at the head of the case, and an adjustable hand grip (with lock) in the handle. The case and grip have a calibration scale that is set and read like a micrometer.



OPERATING INSTRUCTIONS

Setting the TORQUE

The following example demonstrates how to set a torque of 64 ft. lbs.

1. Unlock the handle by holding the tube and firmly pulling the handle back. See Figure A.

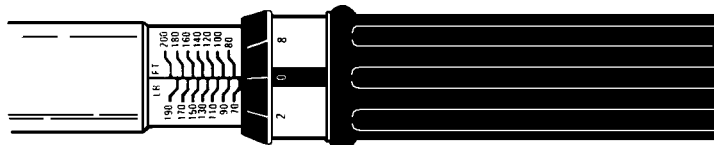


FIGURE A
Handle in the Unlocked Position

NOTE: Keep pressure (a rearward pull) on the handle during Steps 2 and 3.

2. Align the thimble edge with the "60" graduation cross line on the tube. Align the zero (0) on the thimble with the vertical line on the tube. See Figure B. *The wrench is now set at 60 ft. lbs.*
3. By turning the handle, align the four (4) on the thimble with the vertical line on the tube. See Figure C. *The wrench is now set at 64 ft. lbs.*

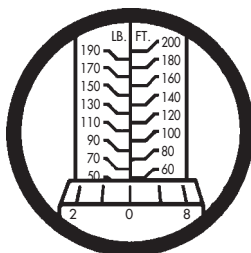


FIGURE B
Set at 60 ft. lbs.

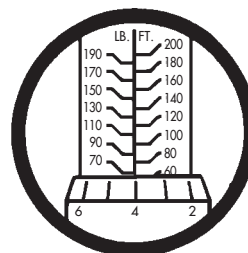


FIGURE C
Set at 64 ft. lbs.

4. Push the handle forward until it clicks into the lock position. **NOTE: The handle will lock only when a line on the thimble is in line with the vertical line on the tube. See Figure D.**

Sheet No. 1 of 2

Issue Date: Rev. 5-1-98

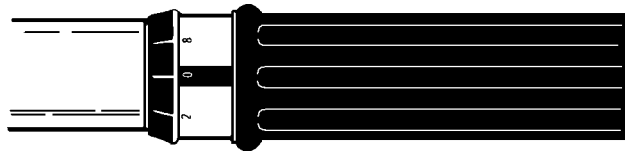


FIGURE D
Handle in the Locked Position

IMPORTANT: The handle must be in the locked position before torque is applied. See Figure D.

5. Apply the wrench to the nut or bolt, and pull until you feel and/or hear the wrench click. Release. The wrench automatically resets for the next operation.

IMPORTANT: To prevent equipment damage,

- do not continue pulling on the wrench after the click.
- use special care at low torque settings to stop pulling after the wrench clicks.

METRIC SETTINGS

1. The metric graduations are on the reverse side of the barrel and thimble, and the same steps are used to set a metric torque.

NOTE: The metric scale is not in even graduations. Set the torque by aligning the thimble zero (0) with the cross line on the tube that is nearest to the metric setting. See Figure E. Turn the handle to add metric graduations as needed to bring the torque setting as close as possible to the required metric setting. See Figure F.

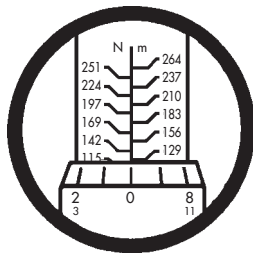


FIGURE E
Set at 129 Nm

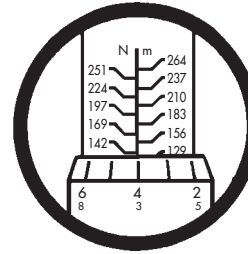


FIGURE F
Set at 134 Nm

MAINTENANCE

1. If the torque wrench has not been used or has been in storage for some time, use it ten times at a low torque setting. This releases an internal lubricant to coat the internal working parts again.
2. Keep the wrench set at a low torque when it's not being used.
3. **Do not turn the handle below the lowest torque setting.** If the handle is turned five or six turns below the minimum setting, the handle will disengage.

The handle, when disengaged from the internal screw, turns free on the tube. The handle is held on the tube by an internal spring-lock, and should never be pulled off the wrench. If the handle is accidentally removed, it should be replaced immediately with enough force to overcome the resistance of the internal spring-lock. If the handle is replaced without disturbing its internal parts, the wrench will remain in calibration. Use the following steps to engage the internal screw again:

- A. Gently push the handle toward the graduations scale while turning it to engage the internal screw again.
- B. After the internal screw has been engaged, turn the handle while pulling backward lightly until the lowest torque reading is set. The wrench can be used again, and the calibration has not been altered.

4. The tool is durable and designed for use in a shop, but the tool is also a precision measuring instrument and should be treated as such.
5. Wipe the wrench clean. Do not immerse the wrench in any type of cleaner that may affect the high pressure lubricant inside the tube.

One Year Limited Warranty

Effective 2-17-97

This product, and all parts making up this product, with the exceptions noted below or otherwise stated under a separate warranty, are warranted against defects in materials and workmanship for a period of one year from date of purchase.

This warranty is expressly limited to the original retail purchaser of the product or part for use in the ordinary course of the buyer's business.

This warranty does not cover any product or part that has been abused, worn out, contaminated, rusted, heated, ground, or otherwise altered, damaged due to side loading, used for a purpose other than for which it was intended, or used in a manner inconsistent with any instructions regarding its use.

Chains, batteries, electric motors, knives, and cutter blades, which are sold with OTC products, are not covered under this warranty. Electric motors are separately warranted by manufacturers under conditions stated in their warranties.

THIS WARRANTY IS EXCLUSIVE OF THIS PRODUCT, AND OTC MAKES NO OTHER WARRANTY OF ANY KIND WHATSOEVER, EXPRESSED OR IMPLIED, WITH RESPECT TO THE PRODUCTS MANUFACTURED OR SOLD BY IT, WHETHER AS TO MERCHANTABILITY, FITNESS FOR A PARTICULAR PURPOSE, OR ANY OTHER MATTER. No agent, employee, or representative of OTC has any authority to bind OTC to any affirmation, representation, or warranty concerning OTC products or parts, except as stated herein.

To qualify for warranty consideration, return the OTC product, freight prepaid, to an OTC authorized hydraulic service center. If any product or part, manufactured or distributed by OTC, is found to be defective by OTC, in its sole judgment, OTC will, at its option, either repair or replace such defective product or part, and return it via best ground transportation, freight prepaid.

THIS SHALL BE THE EXCLUSIVE REMEDY AVAILABLE FOR ANY DEFECTS IN THE PRODUCTS OR PARTS MANUFACTURED OR SOLD BY OTC, OR FOR DAMAGES RESULTING FROM ANY OTHER CAUSE WHATSOEVER, INCLUDING, WITHOUT LIMITATION, OTC'S NEGLIGENCE. OTC SHALL NOT, IN ANY EVENT, BE LIABLE TO ANY BUYER FOR CONSEQUENTIAL OR INCIDENTAL DAMAGES OF ANY KIND, WHETHER FOR DEFECTIVE OR NON-CONFORMING GOODS, NEGLIGENCE, ON THE BASIS OF STRICT LIABILITY, OR FOR ANY OTHER REASON.

The purpose of this exclusive remedy shall be to provide the buyer with repair or replacement of products or parts, manufactured or distributed by OTC, found to be defective in materials or workmanship, or negligently manufactured. This exclusive remedy shall not be deemed to have failed its essential purpose so long as OTC is willing and able to repair or replace said defective products or parts in the prescribed manner.

Repair Service

Should your torque wrench require repair service, contact your nearest OTC authorized torque wrench repair center, and provide them with the date of purchase information. If the unit is determined to be in warranty, it will be repaired or replaced at no charge and returned freight prepaid.

If the unit is determined to be out of warranty, it will be repaired for a nominal service charge plus return freight.

TORQUE WRENCH SERVICE CENTERS

If warranty or repair service is needed, ship the wrench freight prepaid to:

USA

Angle Repair Service Inc.
175 Angle Drive
Beckley, WV 25801
Phone: (304) 253-5729

CANADA

Air Electric Services LTD.
6739 76th Ave.
Edmonton, Alberta T6B 0A9
Phone: (403) 465-0906
Fax: (403) 465-5958

Roy's Hydraulic Service LTD.
399 Oakdale Road
Downsview, Ontario M3N 1W7
Phone: (416) 741-5467
Fax: (416) 741-4756

Le Centre de Reparations
Hydrauliques Uptown Ltd.
464 St. Hubert Street
Laval, Quebec H7G 2Y9
Phone: (514) 387-6143
Fax: (514) 667-8335

Sheet No. 2 of 2

Issue Date: Rev. 5-1-98
