



655 EISENHOWER DRIVE  
 OWATONNA, MN 55060 USA  
 PHONE: (507) 455-7000  
 TECH. SERV.: (800) 533-6127  
 FAX: (800) 955-8329  
 ORDER ENTRY: (800) 533-6127  
 FAX: (800) 283-8665  
 INTERNATIONAL SALES: (507) 455-7223  
 FAX: (507) 455-7063

Form No. 106013

Parts List &  
 Operating Instructions  
 for:

1783  
 D01182AA

## Support Stand

Maximum Capacity: 20 Tons

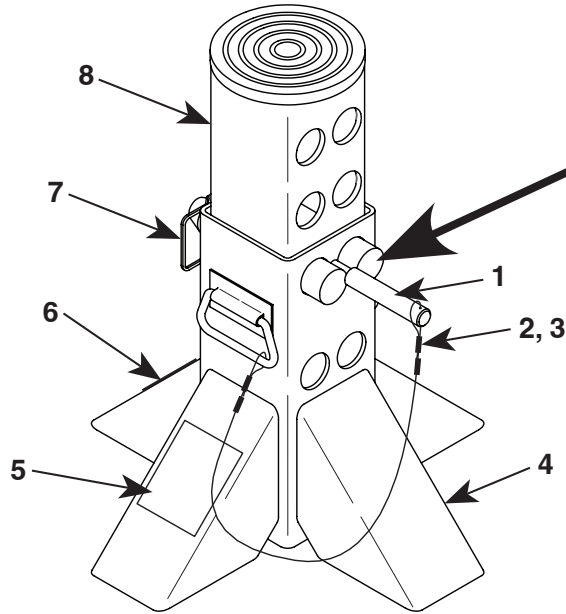


Figure 1

**IMPORTANT:**  
 See important information  
 regarding locking pins on  
 reverse side of this sheet.

### Parts List

Item No.	Part No.	No. Req'd	Description
1	44062	1	Support Pin
2	563519	1	Wire Rope
3	563520	4	Crimp Sleeve
4	60794	1	Support Stand Base
5	313529	1	Decal
6	206321	1	Warning Decal
7	217917	1	Locking Pin
8	44051	1	Inner Tube (Extension Tube)

### Safety Precautions



**WARNING:** To prevent personal injury and / or property damage,



- Read, understand, and follow the operating instructions.



- Wear eye protection that meets the requirements of ANSI Z87.1 and OSHA.



- Do not exceed the capacity rating shown on each support stand.

- Support Pin and Locking Pin **MUST ALWAYS** be used. Support Pin must be inserted and locked using Locking Pin before lowering a load onto the D01182AA Support Stand. Always check the placement of the support pin before lowering a load onto a support stand.

- Inspect the support stand for damage before each use.

- Position the support stand on a smooth, level surface. Soft or irregular surfaces may not provide adequate support, and the stand may tip.

- Support the load with the center of the support stand pad; do not support a load on the edge of the support stand pad.

- The load and the support stand(s) must be stable before beginning any repairs underneath the load.

- Use as a matched pair to support one end of a vehicle only.

Sheet No. 1 of 1

Issue Date: Rev.G, September 20, 2019

## Operating Instructions

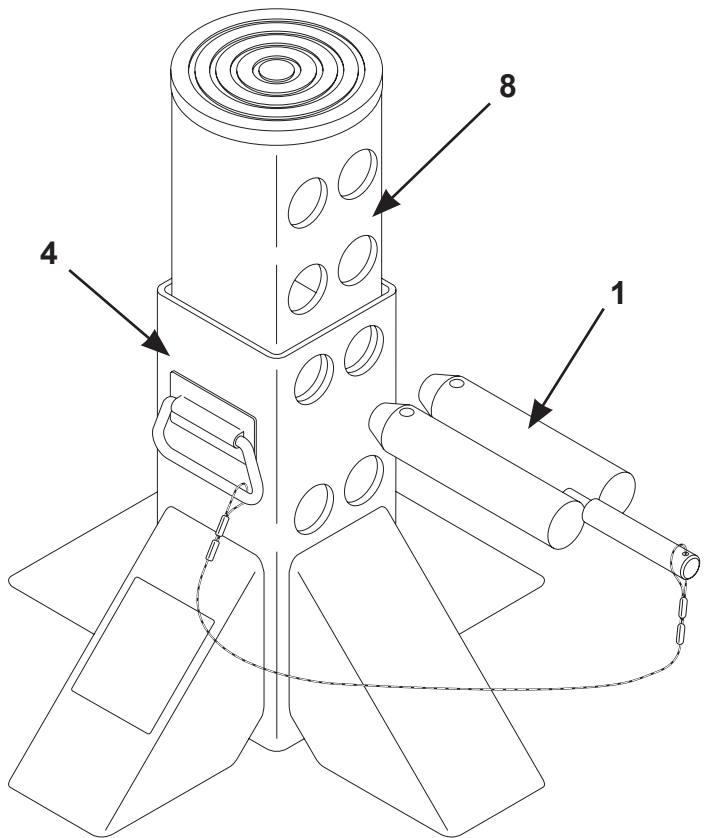
1. Position the support stand(s) in a location with a smooth, hard, and level surface to keep the load balanced.
2. Raise the support stand's inner extension tube (Item #8) up to the load.
3. Position the support stand under the load so that the weight will be centered on the support stand pad but **DO NOT** lower the weight on the pad until support stand has been secured (See Step #'s 4 and 5 below).

**⚠ WARNING: Support Pin (#1) MUST be both inserted and locked BEFORE supporting a load.**

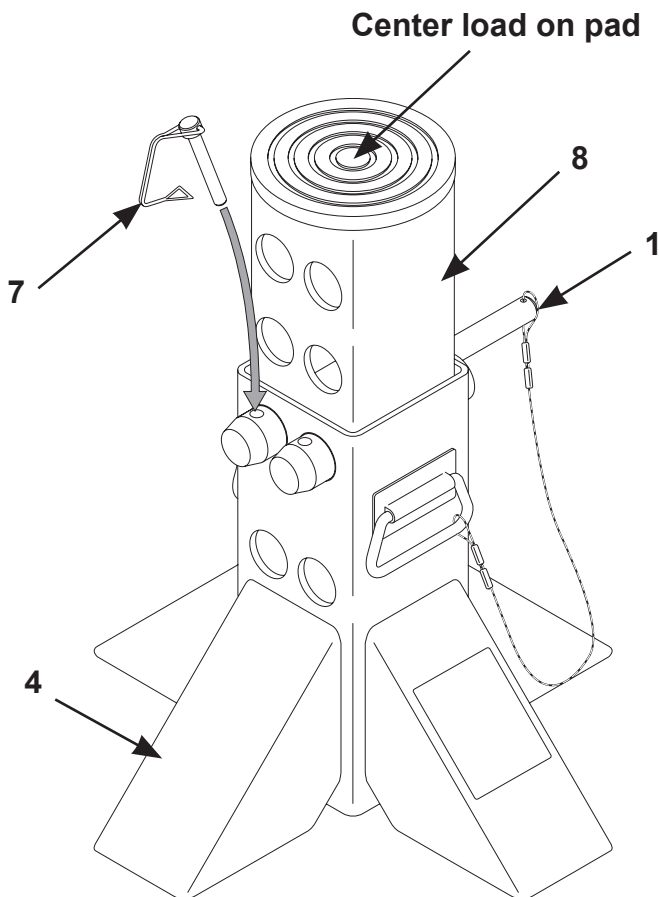
4. Insert the support pin (#1) completely through both walls of the inner extension tube (#8) and support stand base (#4). **See Figure 2.**
5. Lock support pin (#1) in place by inserting the locking pin (#7) through one of the available holes on support pin as shown below and attach clip to other end of locking pin. **See Figure 3.**

**IMPORTANT:** Ensure support pin is fully inserted and locked into place with locking pin before lowering load onto support stand.

6. If the load is a vehicle, block the wheels to prevent movement. **NOTE:** To ensure stability, it is recommended that two support stands be used for the end of the vehicle that is being lifted.
7. Carefully lower the load onto center of support stand pad. **See Figure 3.**



**Figure 2**



**Figure 3**

**⚠ WARNING: Failure to use the locking pins correctly may result in equipment failure or personal injury. For any questions regarding this product, contact Technical Services.**