



OTC **ROBINAIR.**

Heavy Duty

OTC *Stinger Series*



- Engineered in the U.S.A.
- Lifetime Marathon Warranty®

For more than 75 years, automotive service professionals have depended on the quality and durability of OTC's heavy-duty tools and shop equipment.

OTC's full range of tools and equipment has been designed for the professional service technician and represents the highest standard in quality and reliability. Engineered in the U.S.A. and backed by a Lifetime Marathon Warranty, OTC-branded tools and equipment set the standard by which all other tools and equipment are measured.

OTC

Heavy-Duty Lifting

OTC Diesel Particulate Filter Cleaners 1

Power Train Lifts 2

Truck Clutch & Flywheel Handler 2

2,000 lb. Capacity High-Lift Transmission Jack for Trucks and Buses 2

Truck Clutch & Flywheel Handler 2

1,000 lb. Capacity High-Lift Transmission Jack 2

2,200 lb. Capacity Truck Transmission Jack 2

6- & 10-Ton Capacity Air/Hydraulic Service Jack 2

10-Ton Combination Air Lift & Support Stand 2

10-Ton Capacity Lifting System 3

3-Stage Under-Axle Jack 3

10-Ton Air Lift 3

Heavy-Duty Lifting

2-, 3-Ton Service Jacks 3

6-, 10-Ton HD Service Jacks 3

4-Ton Capacity Fork Lift Jack 3

27.5-Ton Under-Axle Jack 3

10-Ton Portable Hydraulic C-Frame Press 3

20-Ton Truck Ramps 4

High-Lift Wheel Dolly 4

1,500 lb. Dual Wheel Dolly 4

Brake Drum Dolly 4

20-Ton Wide Truck Ramps 4

2,000 lb. Capacity Heavy-Duty Motor-Rotor® Repair Stand 4

10-Ton Air-Operated Oil Filter Crusher 4

25-Ton Automotive Air/Hydraulic Oil Filter Crusher 4

Diesel Engine Stand & Adapter Plates

6000 lb. Revolver® Diesel Engine Stand 5

Revolver® Engine Adapter Plates 5

Floor Cranes

2,200 and 4,400 lb. Capacity Heavy-Duty Floor Cranes 6

6,000 lb. Capacity Heavy-Duty Floor Cranes 6

Slings

Load Leveler 6

Alloy Chains for Overhead Lifts and Hoists 6

Load-Rotor® Positioning Slings 6

Heavy-Duty Adjustable Slings 6

12-Ton Capacity Low and High Jack Stands 6

Heavy-Duty 20-Ton Capacity Adjustable Support 6

3- and 6-Ton Capacity Ratcheting Jack Stands 6

10-Ton Capacity Ratcheting Jack Stands (pair) 7

4,000 lb. Capacity Underhoist Tripod Stand 7

Shop Presses

16-1/2 Ton Capacity Bench Press 7

17-1/2 Ton Capacity Heavy-Duty "Open Throat" Press 7

25- and 55-Ton Shop Presses 7

100-Ton Economy Shop Press 8

100-Ton Capacity Heavy-Duty Shop Presses 8

100-Ton Capacity Heavy-Duty Shop Presses 8

Shop Press Accessories

Accessories for 100-Ton Capacity Presses 8

Specialty Shop Equipment

Easy Lever Wheel Dollies 9

Bottle Jacks 9

Air/Hydraulic Pump 9

Back Buddy™ II 9

Transfer Tanker 9

Heavy-Duty Wheel Step 9

DEF Refractometer 9

Heavy-Duty Tools

Heavy-Duty Universal Joint Puller 10

Heavy-Duty Bearing Cup Installer 10

Heavy-Duty Bearing Cup Installer 10

U-Joint Tool 10

Freightliner Rear Suspension Tool 10

Wheel Stud Service Kit 10

Truck Clutch Alignment Tools 11

Pilot Bearing Pullers 11

Differential Housing Spreader 11

Truck Clutch Adjustment Gauge Set 11

Drivetrain

HD Clutch Adjusting Wrench 11

Clutch Service Set 11

Spicer® U-Joint Service Set 11

Self-Adjusting Clutch Rotating Tool 11

Truck Transmission Bearing Service Set 11

Wheel

Slack Check 11

Brake Anchor Pin and Bushing Service Set 11

Wheel Tipper 11

Slack Adjuster Pullers 12

Air Brake Service Kit 12

Axle Stud Cone Pliers 12

Wheel Bearing Locknut Sockets (8 pt.) 12

Wheel Bearing Locknut Sockets 12

Forcing-Screw C-Press 12

Hub Oil Seal Puller 12

Heavy-Duty Truck Brake Spring Pliers 12

S-Cam Air Brake Spring Tool 12

Locknut Sockets 13

Lug Nut Cap Remover 13

Truck Pinion Sockets 13

Budd Wheel Socket Set (5 piece) 13

Truck Wheel Bearing Locknut Sockets (6-pt.) 13

Steering

Sprinter Van Front End Kit 14

Universal Bearing Cup Installer 14

Mack Kingpin Socket 14

Truck Front Leaf Spring, Pin and Bushing Service Set 14

Heavy-Duty Power Steering Pump Analyzer 14

Truck Kingpin and Brake Anchor Pin Pusher 14

Engine

Diesel Glow Plug Removal Tool 14

Manual Sleeve Puller Set 14

- Competitively priced
- Two-year limited warranty

In addition to offering “the right tool for every job,” OTC also offers “the right line of tools for every budget!”

OTC’s Stinger line of products is designed for the cost-conscious shop owner who still wants the reliability of an OTC product. Since being introduced in 2000, Stinger products have become recognized for their value and performance. Competitively priced, Stinger products carry a two-year limited warranty.

Engine (Continued)

Cummins Water Pump Pulley Tool 15
 Charged Air Cooler Tester 15
 Sleeve Puller for Wet-Type Sleeves 15
 Diesel Compression Tester with Adapters 15
 17-1/2 Ton Hydraulic Sleeve Puller Set 15

Fuel

Nozzle-Tester Adapter Set 15
 Fuel Injector Nozzle Puller 15
 Nozlrater Diesel Injector Nozzle Tester 15
 Davco Diesel Filter Wrenches 15
 Cummins Diesel Fuel Injector Remover Kit 15
 Ford Injector Remover/Installer Kit 16
 Master Cummins Diesel Fuel Injection Test Kit 16
 Diesel Fuel Inlet Restriction Test Adapter 16

General Purpose

Compressor Drive-Gear Coupling Puller 16
 Power Twin® Ram and Pump Set 16
 10-Ton Collision Repair Set 16
 Four-In-One™ Puller Set, 7-Ton Capacity 16
 Jimmy Bars 16
 Handled Pry Bars 16
 Torque Wrenches 16
 Universal Outside Thread Chaser 16
 Pilot Bearing Puller 16
 EVAP – Leak Detection System 17
 Smoke Check 1667 Diesel Emission Tester 17
 Bearing Splitter Combo Pack 17
 Engine Preluber Kit 17
 Hendrickson Primaax Quick Alignment Socket 17
 Hendrickson PRIMAAAX® Quick Wrench 17
 Hendrickson Bar Pin Adapter Set 17
 Hendrickson Suspension Bar Pin Adapter Set 17
 Hendrickson Press Tooling Set 17

Heavy-Duty Diagnostics

EZ-TAP 18
 Genisys EVO® Heavy-duty Scan 19
 Genisys® Heavy-duty Scan Kit 19

Heavy-Duty Code Reader 20
 Heavy-Duty Scan 20
 Pro-Link® iQ 20
 Pocket iQ™ 20

Heavy-Duty Battery

Sabre Heavy-Duty Battery and Electrical System Diagnostic Tester 21
 130-Amp Heavy-Duty Battery Load Tester 21

Magnetic Induction Heater

OTC Magnetic Induction Heater System 21

OTC STINGER SERIES

Heavy-Duty Lifting

5 and 10-Ton Hydraulic Service Jacks 22
 5- & 10-Ton Capacity Air/Hydraulic Service Jacks 22
 20-Ton Hydraulic Service Jack 22
 2,000 lb. Capacity Low-Lift Transmission Jack 22
 1,000 lb. Capacity Low-Lift Transmission 22
 Truck Dual Wheel Dolly 22
 Stinger Easy Roller™ 22
 22-Ton Capacity Under-Axle Jack Stands 22
 22-Ton Capacity Under-Axle Jack 22
 Folding Floor Cranes 22
 1,500 lb. Capacity Engine Load Leveler 22
 Brake Drum Dolly 22
 Two Speed 3-1/2 Ton Service Jack 22
 SUV Jack Pack 22
 Ratchet Style Jack Stands 23
 Air/Hydraulic Bottle Jacks 23

Special Service Tools

Stinger Series 4- & 10-Ton Collision Repair Sets 23
 9300 Series Bottle Jacks 23
 5-Ton Bar-Type Puller/Bearing Separator Set 23
 Multipurpose Bearing and Pulley Puller Set 23
 Pumps and Rams 23
 Bearing Race and Seal Driver Set (10 piece) 23
 Bushing Driver Set (19 piece) 23
 Metric Bushing Driver Set (14 piece) 23

Special Service Tools

Screw Extractor Set 24
 Blind Hole Bearing Puller Set 24
 Heavy-Duty Snap Ring Pliers Set (2 piece) 24
 Snap Ring Pliers Set - Internal/External 24
 7-in-1 Wire Stripper and Crimper 24
 Ratcheting Terminal Crimper 24
 Angle-Tip Relay Pliers 24
 Interchangeable Punch and Chisel Set 24
 Adjustable Oil Filter Pliers 24
 Heavy-Duty Oil Filter Wrenches 24
 Truck Brake Spring Pliers 24
 Universal Filter Wrench 24
 3-Leg Oil Filter Wrench 24

OTC Tire Bead Seater

Tire Bead Seater 25
 Tire Bead Breaker 25
 Air Chuck 25
 Tire Spoons 25

ROBINAIR

Coolant Exchange Unit 25
 34788 Ahead of the Game 25

OTC 5286 Portable Diesel Particulate Filter Cleaner

The advent of the 2010 Tier 4 cleaning requirements created the need for a lighter, more portable cleaning system which can be taken into the field to clean filters at the point of service. Designed with input from major OEM's the 5286 cleans both on-highway and Off-highway DPF's and offers the following features:

DPF Cleaner Features

- Lightweight and Highly Portable - ideal cleaning system for use in the shop or on a service truck.
- Flexibility - clean DPF's from 6" to 15.5" in diameter using shop or compressed air of at least 100 PSI and 20 CFM sustained airflow.
- Fully Automated Operation - once started, the cleaning process can be completed with minimal operator oversight, freeing up technician to simultaneously do other work in the shop.
- Focused Air Jet Technology™ - concentrates a precise high pressure stream of air directly into every cell.
- Includes three nozzles: two straight (short and long), for standard "open face" DPFs; and one curved for the angled-flange DPFs. Ensures quiet operation.
- Maximum Efficiency - OTC's unique floating puck prevents "splash back," which maximizes the volume of air entering each cell.
- Innovative ash disposal system enables technician to quickly and easily remove and dispose of particulate matter in accordance with local environmental requirements.

Long nozzle with floating puck for standard open face DPFs.



Curved neck nozzle with floating puck for angled-flange DPFs.

5286 fully assembled



No. 5286 OTC Portable Diesel Particulate Filter (DPF) Cleaner



5280



OTC 5280 Diesel Particulate Filter Cleaner

The Diesel Particulate Filter (DPF) Cleaner was designed with shop service in mind. The cleaning process allows the DPF to be cleaned as part of a general maintenance schedule at the service location with minimal time away from the vehicle. It's portability allows the unit to be placed as close to the vehicle as possible and to be stored wherever needed in the service facility.

DPF Cleaner Features

- OE tested and Dealer recommended - By many major diesel engine manufacturers.
- Robust design - For long shop life. Can be used as part of a preventative maintenance program.
- High Pressure cleaning process for thorough cleaning of ash from DPF - produces 10 times the burst energy of competitive low pressure units.
- Initial Burst Quick check - To identify filters too plugged for proper cleaning.
- Movable with locking wheels - For placement throughout the shop.
- Computer Controlled Process Based on OE Requirements - for "Start to End" cleaning without constant technician monitoring.
- Containment of hazardous ash - For easy disposal.
- HEPA Filter Air Exhaust System - To exceed environmental air standards for shop.
- Operates on standard 115V outlet.
- Proven to clean to over 92% efficiency. (3)

(3) Third-party OEM test results using pin gauge measurement with approved SPX adapters and burst cycles. Actual results may vary.

OTC 5281 DPF Thermal Processing Unit

Designed to facilitate the cleaning of dirty filters - especially those with high amounts of wet soot, and unburned hydrocarbons.

- Pre-programmed thermal profile controls temperature 'ramp up' and 'cool down' to protect the DPF from thermal shock, reducing the risk of cracking the DPF.
- Includes both standard cycle and "pre-treat" cycle for oil-soaked filters.
- Holds temperature constant for two hours to ensure complete regeneration of filter.
- Built-in electronic safety lock prevents unauthorized opening of the door when temperatures exceed 200 degrees F.
- Large chamber accommodates various DPF sizes and shapes. Front access door allows for easy access to the thermal chamber.



DPF Cleaner Part Numbers:

No. 5280 OTC Diesel Particulate Filter (DPF) Cleaner

Includes the following items:

- No. 535936 Small Cone
- No. 543887 Medium Cone
- No. 543885 Large Cone
- No. 553913 CAT Adapters
- No. 553915 Cummins Adapters



535936

543887

543885

Upgrade kits for other OEM's are sold separately:

- No. 556889 Detroit Diesel Upgrade Kit
- No. 553990 UD TRUCK (with Hino Engine) Upgrade Kit
- No. 553991 Isuzu Upgrade Kit
- No. 553993 Volvo/Mack Upgrade Kit
- No. 558181 Navistar Upgrade Kit*

* Requires use of 5281 DPF Thermal Processing Unit.



Power Train Lifts

These lifts will handle engine and transmission assemblies, gas tanks, drive axle assemblies, engine/transaxle assemblies, electric bus batteries, and more.

- Scissors-type design allows access to all four sides of a component.
- Smooth, steady lifting and lowering motion controlled by hand-held remote.
- Two independent adjusting screws tilt the table $\pm 15^\circ$ side-to-side, or fore and aft.
- 20" x 32" Tilt table.
- Larger casters accommodate heavy loads.

No. 1595 2,500 lb. Capacity Lift.

- Powered by a quiet, 110V electric/hydraulic pump.
- Minimum height is 29" with an 80" maximum height.
- A 30 ft. long retractable extension cord is mounted to the frame

No. 5285 1,650 lb. Capacity Lift.

- Air / hydraulic operation – Foot control pump (2510A) with hose allows movement around lift.
- Minimum height is 29" with an 72" maximum height.

1,000 lb. Capacity High-Lift Transmission Jack

- Universal mounting head provides wide fore and aft tilt range.
- Lifting range from 37" to 73-3/4".
- Two-stage hydraulic cylinder design.
- Innovative folding foot pedal and release provides precise ease of control when positioning or removing a transmission.
 - Significantly reduces force required to lift extremely heavy transmissions.
- Upgraded ergonomic handles for adjustment.
- ANSI/PALD compliant.

No. 5237 1,000 lb. Capacity High-Lift Transmission Jack.



2,200 lb. Capacity Truck Transmission Jack

- Low profile of 8".
- Lift range: 8-1/4" to 36-1/2".
- Swiveling, hydraulic pump handle and fast-acting pump.
- Special mounting adapter fits Eaton® Fuller® RoadRanger® and Rockwell® heavy-duty transmissions.
- Covered by OTC Lifetime Marathon Warranty®.

No. 5019A 2,200 lb. Capacity Truck Transmission Jack.



2,000 lb. Capacity High-Lift Transmission Jack for Trucks and Buses

- Low height of 41-1/2" allows transmission to be rolled out from under vehicle's frame.
- Foot-operated air pump enables the operator to effortlessly raise the transmission into place.
- Rugged, heavy wall tubing and oversized base for stability.
- A dedicated adapter for Allison 500- and 600-series automatic transmissions is included.
- Covered by OTC Lifetime Marathon Warranty®.

No. 5078 2,000 lb. Capacity High-Lift Transmission Jack.



Truck Clutch & Flywheel Handler

- Replaces 14" & 15-1/2" clutch assemblies weighing up to 250 lbs.
- 13" low point enables access below side faring.
- Linkage raises load from horizontal to vertical position.
- 360 degree swivel head.
- Covered by OTC Lifetime Marathon Warranty®.

No. 5018A Truck Clutch & Flywheel Handler.

No. 516160 Optional flywheel handling attachment.

No. 515686 Optional splined shaft, 1-3/4" dia. with 1-1/4" pilot.

No. 516159 Optional splined shaft, 1-3/4" dia. with 1" pilot.



Truck Clutch & Flywheel Handler

- Handles 14" and 15-1/2" clutch assemblies weighing up to 150 lbs.
- Lifting range of 9" to 37". Swivel casters provide easy maneuverability.
- Includes a 2" spline shaft with a 1-1/4" pilot to aid in alignment.

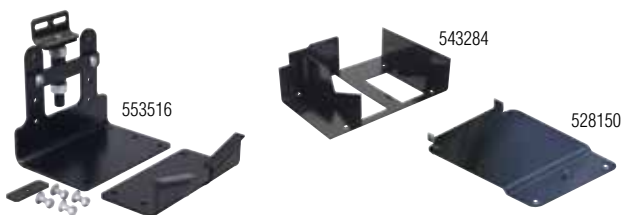
No. 5015A Truck Clutch & Flywheel Handler



1,000 lb. Capacity DriveMaster Driveline Lift

- Low profile of 6".
- Lift range: 24" to 30".
- Pivoting pump handle +/- 15° tilt in each direction
- Includes 553516 Differential Adapter
- ANSI/PALD

No. 5130 1,000 lb. DriveMaster Driveline Lift



No. 528150 Eaton® "Lightning" adapter. Used with the No. 5019A transmission jack.

No. 543284 Roadranger transmission Model series FRO-11210C to FRO-18210C that is equipped with an internal cooler. Used with the No. 5019A transmission jack.

No. 553516 Differential Mounting Adapter. Mounts easily using existing bolt patterns. Fits the most common differentials currently in use on Category 7 and 8 Heavy Duty Trucks. Including: Eaton, Fuller, Rockwell, Meritor, Spicer, International, and Mack. For use on OTC 5019A / 5078 and Stinger 1522A Transmission Jacks. Wt., 33 lbs., 4 oz.

10-Ton Capacity Lifting System

- Mobile, tandem system is air-operated. This will handle your class 7 and 8 tractor lifting needs. No need to waste time re-blocking and making additional lifts for the clearance you need for under-vehicle service. Roll the system to the vehicle anywhere in the shop or outside on a level surface.
- Unique design provides lift from the tires, not the frame or axle members. Ideal for situations where limited ground clearance or a lack of clear access complicates lifting.
- Single controller operates both sides of the system for a smooth, level lift up to two full feet from the bottom of the tires to the ground. Units can double as support stands when retention pin is inserted.
- Covered by OTC Lifetime Marathon Warranty®.

No. 1520 Lifting System. **Includes two lifts.**



10-Ton Air Lift

- Adjustable lifting saddles and an extra-wide stance for extra stability.
- 10 tons of lift at 200 PSI air pressure.
- Lifting range is 13" to 52".
- Automatic mechanical safety catch engages in five height positions.
- Two large swivel casters and pneumatic tires make it easy to maneuver, even on loose gravel.
- Covered by OTC Lifetime Marathon Warranty®.

No. 1590 10-Ton Air Lift.



10-Ton Combination Air Lift & Support Stand

- Height range of 16-1/8" to 49-1/4".
- Removable handle and 8' air hose.
- Covered by OTC Lifetime Marathon Warranty®.

No. 1591A 10-Ton Air Lift/Support Stand.



10-Ton Portable Hydraulic C-Frame Press

- Weighing less than 28 lbs, this durable press is portable for various applications, i.e., roadside maintenance services, industrial applications, marine, general automotive.
- For clamping, pressing and bending. Ideal for welding and metal fabrication.
- 9" Open-Throat™ design.
- Couples to any 4- or 10-ton Porta Power pump.
- The base can be assembled to position the press either vertically or horizontally and can also be mounted to a bench.

Set includes—C-Frame press with base, adapters:

V-pushing and ram pushing (9/16" and 3/4" dia. shanks), receiving insert, flat insert, storage case.

No. 5180 10-Ton Portable Hydraulic C-Frame Press.

6- & 10-Ton Capacity Air/Hydraulic Service Jack

- Huge steel front wheels are mounted in bearings for trouble-free service life.
- Rear swivel casters make spotting the jack easy.
- Spring-loaded handle can be locked in three positions.
- The No. 5110 can also be operated manually when shop air is unavailable.
- Covered by OTC Lifetime Marathon Warranty®.

No. 5106 6-Ton Air/Hydraulic Service Jack. Lifting range 6-3/4" to 25", reach 87", 45" handle.

No. 5110 10-Ton Air/Hydraulic Service Jack. Lifting range 6-1/2" to 26-5/8", reach 93", 46" handle.

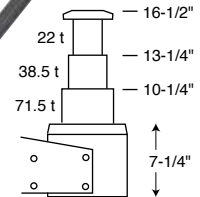


3-Stage Under-Axle Jack

Three-stage lift capacity 20T, 35T, and 65-tons. Ideal for lifting loaded trailers, buses, and other Class 7 & 8 vehicles.

- Piston and cylinders are made from chromium molybdenum vanadium steel for durability and then liquid nitrided to prevent rust and seizing.
- Features a high load-approach speed.
- Air-driven cylinder with pressure control knob for maximum user safety.
- 4-position handle: horizontal, 45 degrees, vertical, or collapsed.
- 7-inch minimum height for low clearance vehicles.
- Comes complete with a 3-15/16 in. (100 mm) lifting extension.
- Complies with ASME / PALD test requirements.

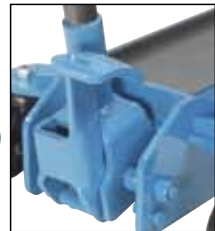
No. 5093B 3-Stage Under-Axle Jack.



5206 shown



Built-in tray for fasteners and tools.



Foot pedal for quick approach of the lifting saddle to load.

2-, 3-Ton Service Jacks

Unique, innovative design featuring...

- Ergonomic handle for user comfort and easy mobility.
- CE marked ASME/PALD tested.
- Polyamide wheels are superior to cast wheels due to their high mechanical strength and durability: – Demonstrate exceptional resistance to wear and tear. – Will not damage garage floors, do not rust, and are quiet in operation.
- Foot pedal for quick approach of the lifting saddle to load.

No. 5200 2-ton Service Jack. Height Min. 1-7/8", Max. 20-1/2".

No. 5202 2-ton Service Jack. Height Min. 3", Max. 18-1/4".

No. 5203 3-ton Service Jack. Height Min. 5-1/2", Max. 20-3/4".



Polyamide wheels are superior to cast wheels due to their high mechanical strength and durability.

6-, 10-Ton HD Service Jacks

No. 5206 6-ton HD Service Jack. Height Min. 6-11/16". Max. 22-13/16".

No. 5210 10-ton HD Service Jack. Height Min. 7-5/8". Max. 14-15/16".

Oil Filter Crushers

10-Ton Air-Operated Oil Filter Crusher

- Crushes up to four automotive filters at one time, in just 20 seconds.
- 100% air operation eliminates electrical connections. The generous size crushing chamber (9" high) easily accommodates the largest automotive spin-on filters on the market.

No. 1821 10-Ton Air-Operated Oil Filter Crusher.



25-Ton Automotive Air/Hydraulic Oil Filter Crusher

- Crushing time is 49 sec. (9 CFM at 100 p.s.i.)
- Automatic cycle feature lets you load the filter, push a button, and walk away.
- Removes up to 95% of the oil from a pre-drained filter.

No. 1896 25-Ton Automotive Air/Hydraulic Oil Filter Crusher.



20-Ton Truck Ramps

5269 shown
tread width: 16"

- Long, 34-1/2" retractable T-handle enhances mobility.
- Non-skid rubber matting prevents slippage during use.
- Durable, heavy-duty 5" diameter rubber wheels.
- Capacity per pair: 20 tons; overall length: 51"; overall height: 9".
- Covered by OTC Lifetime Marathon Warranty®.

No. 5268 20-Ton Truck Ramps. tread width: 10".

No. 5269 20-Ton Wide Truck Ramps. tread width: 16".

1,500 lb. Dual Wheel Dolly

- Hydraulic jack provides almost 5" of lift and tilts wheel assembly 4° to prevent damage to wheel seal.
- Independent lifting rack provides maximum stability; rollers won't catch on load.
- Swivel casters for easy maneuverability.
- 6' chain holds load in place.
- Covered by OTC Lifetime Marathon Warranty®.

No. 1770A Dual Wheel Dolly.



Brake Drum Dolly

- Remove, install, and transport truck brake drums without physically having to lift them.
- Works on 15" and 16-1/2" drums found on most Class 7 and 8 tractor and trailer brake systems.
- Heavy-gauge steel construction, ten-inch pneumatic tires, and adjustable handle.
- Covered by OTC Lifetime Marathon Warranty®.

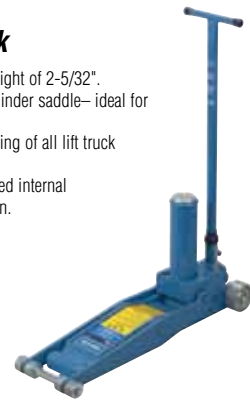
No. 5017A Brake Drum Dolly.



4-Ton Capacity Fork Lift Jack

- 8,000 lb. capacity (4-tons) with a low starting height of 2-5/32".
- 10,000 lb. capacity (5 tons) when lifting from cylinder saddle— ideal for agriculture and industrial applications.
- Unique shape of primary saddle allows for handling of all lift truck configurations with flat or edged surfaces.
- Features include high-quality seals, chrome-plated internal components, and high-strength steel construction.
- Secondary lifting surface feature.
- Complies with ASME-PALD.
- Lifting Height: 2-5/32 – 17-15/16"

No. 5214 4-Ton Capacity Fork Lift Jack.



27.5-Ton Under Axle Jack

- Features class-leading 27.5 ton capacity
- Robust design with completely sealed piston – reduces likelihood of contamination of hydraulic fluid.
- Ergonomic handle design provides convenient location of air valve and release knob.
 - Incorporates both hand release knob and venturi vacuum system for power return with no load.
- Four position handle includes 'stow away' position for convenient storage.
- Maximum height of 21-3/8 inches when used with screw extended and large adapter.
- Complies with latest ASME/PALD standards.

Specifications:

- Minimum retracted height (with saddle): 8-1/4"
- Maximum lifting height (with saddle only): 13-1/8"
- Maximum lifting height (with screw extended and large adapter): 21-3/8"
- Stroke: 4-15/16"
- Large adapter length: 3-15/16"
- Screw extended length: 4-3/4"
- Handle length: 48-3/4"
- PSI range: 90 to 175 psi.

No. 5092 27.5-Ton Under Axle Jack.



AAPEX 2010
New Product
Show Case
Award Winner

Convenient and secure storage space for large adapter & saddle.

Large adapter

Saddle

2,000 lb. Capacity Heavy-Duty Motor-Rotor® Repair Stand

- Handles a wide variety of engines, transmissions, torque converters, and rear axles from trucks, tractors, and construction machinery.
- The 50:1 ratio gearbox allows full rotation of mounted unit with just a turn of the crank and locks in position. Easily maneuvered when loaded.
- Twin-post design, featuring laterally adjustable, 3-position outboard support; provides an extremely stable work-holding unit.
- Locking rear wheels anchor stand in position.
- Covered by OTC Lifetime Marathon Warranty®.

No. 1735A Motor-Rotor® repair stand.



1735A with engine



1735A with 206391

No. 206391 6.0L and 6.4L Ford engine adapters.
(Works with both the OTC 1735 and OTC 1735A).

6000 lb. Revolver® Diesel Engine Stand

- 96-to-1 ratio worm and gear set rotates components 360°; handle locks in any position.
 - Includes universal mounting plate for use with individual engine adapter plates.
 - Covered by OTC Lifetime Marathon Warranty®.
- No. 1750A** Revolver Diesel Engine Stand.



Revolver® Engine Adapter Plates

You can order only those plates you need for the engines you work on. The universal adapter assembly is required for mounting all plates to the stand.

No. 205061 Universal Adapter Plate Assembly. Included with 1750A engine stand. (Must be used with all plates below.) Wt., 110 lbs.

Detroit Diesel

- No. 205058*** For Detroit engines: 53 series in-line 6 cyl., 6V & 8V; 71 series in-line 6 cyl., 6V, 8V, & 12V; 92 series 6V & 8V; 8.2 liter V-8. Wt., 61 lbs., 8 oz.
- No. 52871*** For coach 6V and 8V series 71 Detroit Diesel. Wt., 55 lbs.
- No. 218504*** For Detroit series 60 in-line 6-cylinder engines. Wt., 38 lbs.

Detroit Allison

- No. 208160*** Allison transmission mounting plate for transmission Nos. AT500, MT600, MT 6-speed, VH, VS, and V730. Wt., 26 lbs., 13 oz.
- No. 61373*** Allison transmission adapter plate for transmission series HT-750, CLBT, HT-740D, CR/DR, and HT-750CT. Wt., 42 lbs.

Cummins

- No. 205059*** For Cummins engines: All NH, NTC, NTE, N14 855 series in-line 6 cyl.; 378 series V6; 504, 555, & 903 series V8; KT 1150 series in-line 6 cyl., L10. Wt., 59 lbs.
- No. 61405*** For Cummins L-10 and M11 series engines. Plate attaches to the left side of engine for complete teardown. Wt., 85 lbs.

Cummins

- No. 218098*** For Cummins "B" series 5.9L in-line 6 cyl. engines. Wt., 15 lbs., 10 oz.
- No. 218099*** For Cummins "C" series 8.3L in-line 6 cylinder engines. Wt., 41 lbs.

Caterpillar

- No. 205060*** For Caterpillar engines: Nos. 1673, 1674, 1693, 3306, & 3406 in-line 6 cyl.; Nos. 1100, 3208, and 3408 V8. Wt., 72 lbs.
- No. 217687*** For Caterpillar 3114, 3116, and 3176 in-line 6 cylinder and C12 engines. Wt., 48 lbs., 3 oz.

Mack

- No. 205101*** For Mack engines: All 672, 673, 675, & 711 series in-line 6 cyl. Wt., 68 lbs.
- No. 206629*** For Mack engines: V8 1000, E6, & E7 in-line 6 cyl. Wt., 42 lbs., 13 oz.
- No. 528854*** For Mack E3, E5, & Midliner. Wt., 50 lbs.
- No. 528858*** For Mack 865, and 868. Wt., 62 lbs.

International Harvester

- No. 206386*** For International Harvester engines: DT-466, DT-360, DT408, and 530 in-line 6 cylinder; DV-550, MV-404, MV-446, V304, V345, V392, 4-152, 4-196, 4-194; 9.0 liter and T444E V8; and Ford 6.9L, and 7.3L DIT. Wt., 61 lbs., 13 oz.
- No. 528856*** For IH300 & 400 Series. Wt., 59 lbs.
- No. 528857*** For IH BC144, BD154, C200, D155A, D179, D239, D310, D361. Wt., 41 lbs.
- No. 528867*** For International 1313. Wt., 40 lbs.
- No. 528868*** For International VT365. Wt., 30 lbs.

Ford

- No. 61681*** For mounting Ford 6.6L/7.8L engines. Wt., 63 lbs.
- No. 206386*** For Ford 7.3 engines. Wt., 60 lbs.

Volvo

- No. 528853*** For Volvo TD67 and TD71 engines. Wt., 49 lbs.

Isuzu

- No. 528855*** For Isuzu HE1-TC. Wt., 38 lbs.

John Deere

- No. 528859*** For JD 400 and 500 engines. Wt., 132 lbs.
- No. 528860*** For JD 300 engines. Wt., 39 lbs.
- No. 528861*** For JD Powertech 4.5L & 6.8L. Wt., 40 lbs.
- No. 528862*** For JD Powertech 2.4L & 3.0L. Wt., 23 lbs.
- No. 528863*** For JD 8995 V6, must be used with 528859.

Case

- No. 528865*** For Case 148 & 207 series & 251 to 504 series.

*NOTE: Must be used with No. 205061 univ. adpt. plate assembly. Each engine mounting plate includes all the necessary hardware and an engine application chart.





1819, 1820

2,200 and 4,400 lb. Capacity Heavy-Duty Floor Cranes

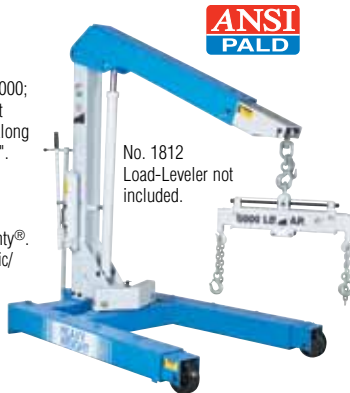
- To conserve valuable floor space, crane folds into a compact package for storage.
- For "close-in" work, leg spread adjusts to clear vehicle's wheels, telescoping boom extension gives additional reach. Roller bearing mounted wheels and steering dolly provide ease of mobility.
- A two-speed hydraulic hand pump provides fast boom travel; descent of boom is under precise control of operator.
- Covered by OTC Lifetime Marathon Warranty®.

- No. 1819** 2,200 lb. Capacity Crane. Has hydraulic hand pump and 16-7/8" lifting chain.
No. 1820 4,400 lb. Capacity Crane. Has hydraulic hand pump and 18-3/8" lifting chain.

6,000 lb. Capacity Heavy-Duty Floor Cranes

- Three boom positions give capacities of 4,000; 5,000; and 6,000 lbs. to handle the biggest engines, and often the transmission right along with the engine! Usable reach is almost 92".
- Boom swivels for vertical and lateral positioning; legs extend to straddle the biggest tires.
- Covered by OTC Lifetime Marathon Warranty®.

- No. 1814** 6,000 lb. Capacity Crane with electric/hydraulic pump (115V) with remote motor control.
No. 1813 6,000 lb. Capacity Crane with two-speed hydraulic hand pump.



No. 1812 Load-Leveler not included.

Load Leveler

- Improved design over conventional spreader bars.
- Carriage on main support beam moved by turning lead screw; this permits fine adjustment of the tilt angle of component being lifted.
- Turn lead screw manually or with air-powered tools.
- Spreader bar adjustment secured with locking bolts.
- Covered by OTC Lifetime Marathon Warranty®.

- No. 1812** Load Leveler. Max. lifting capacity: 6,000 lbs.; distance between hooks: min. 30", max. 46"; chain grade: 80.
No. 1822 Load Leveler. Max. lifting capacity: 10,000 lbs.; distance between hooks: min. 36", max. 56"; chain grade: 80.



Alloy Chains for Overhead Lifts and Hoists

- No. 302249** 3/8" alloy chain, 28-3/8" long, 6,000 lb. capacity. With safety hook on one end.
No. 302941 5/16" alloy chain, 26-13/16" long, 4,000 lb. capacity. With safety hook on one end. Use on No. 1812.
No. 533473 9/32" grade 80 alloy chain, 60" long, 3,000 lb. capacity. With safety hook on both ends.
No. 533474 5/16" grade 80 alloy chain, 71" long, 5,000 lb. capacity. With safety hook on both ends.



Load-Rotor® Positioning Slings

- Use with a floor crane. Engine, transmission, or other component is tilted or leveled by turning sling's 5/8" hex drive end with a common speed handle and socket.
 - Makes engine removal and installation a snap, even in close quarters.
 - For use with floor cranes only; not to be used with overhead hoists or lifts.
- No. 1806** 4,000 lb. capacity Load-Rotor®. Has 65-3/4" long chain (5/16") and hook assembly with forged hook on each end. Pair of special lifting brackets included.



Heavy-Duty Adjustable Slings

- For lifting and positioning engines, transmissions, etc. Each chain can be adjusted independently for length; plate design enables chain to be "short-hooked" for correct tilt.

- No. 205049** 2,000 lb. capacity sling with 1/4" chain, 56" long.
No. 205050 4,000 lb. capacity sling with 5/16" chain, 65" long.
No. 38841 Plate only, use with any 1/4" or 5/16" alloy steel chain.



12-Ton Capacity Low and High Jack Stands

- Spun steel base won't dig or sink into asphalt or sand.
- Covered by OTC Lifetime Marathon Warranty®.

- No. 1778B** 12-Ton Low Jack Stand. One only. Height range of 19" to 29-1/2".
No. 1779B 12-Ton High Jack Stand. One only. Height range of 33-3/4" to 44-1/4".
No. 543751 Extension Tube for Low Jack Stand.
No. 543752 Extension Tube for High Jack Stand.



Heavy-Duty 20-Ton Capacity Adjustable Support

- Designed for the really big service jobs. Rugged steel construction, and large 15-1/2" square base will satisfy support requirements up to 40,000 lbs.
 - Features include 4-point adjustment.
 - Height range is 15-1/4" to 24". Saddle diameter is 6".
 - Covered by OTC Lifetime Marathon Warranty®.
- No. 1783** Adjustable Support Stand. One only.



3- and 6-Ton Capacity Ratcheting Jack Stands

- Jack stands feature a formed steel frame for strength and long life, and rolled base edges that resist sinking into soft ground or asphalt.
 - Recessed column saddle for acceptance of vehicle panel rail (pinch weld).
 - Dual purpose handle serves as carrying handle and column release.
 - Investment cast rack bar for long life strength.
 - Covered by OTC Lifetime Marathon Warranty®.
- No. 1736A** Pair of 6-Ton Jack Stands. Height Range of 15-1/2" to 24-1/2".
No. 1733A Pair of 3-Ton Jack Stands. Height Range of 12-1/2" to 18-1/2".





10-Ton Capacity Ratcheting Jack Stands (pair)

- These ratcheting jack stands are highest quality steel and factory tested to ANSI PALD standards.
- The form-fit saddle design and 12" x 14" base ensures stability.
- Height range is 20" to 31-1/2".

No. 1774B 10-Ton Capacity Ratcheting Jack Stands (pair).

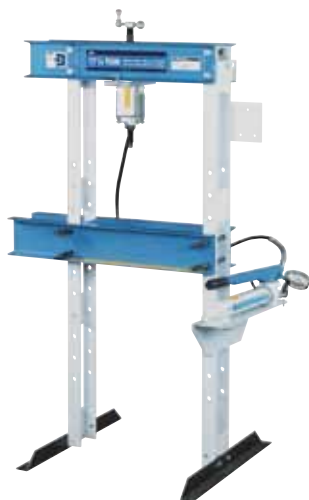


16-1/2 Ton Capacity Bench Press

This innovative press integrates all the hydraulic elements within the chassis. The compact and functional design saves workshop space and ensures protection during transport.

- Bolster is adjustable for height.
- Automatic spring return piston.
- Pressure gauge with damper to extend its working life—positioned at eye level for easy reading.
- Includes set of two V-blocks and legs with bolt-holes for fixing to bench.

No. 5230 16-1/2 Ton Capacity Bench Press.



17-1/2 Ton Capacity Heavy-Duty "Open Throat" Press

- Ram head moves side to side for off-center pressing; ram-to-work distance is adjusted by a forcing screw that is extended or retracted by a speed crank.
- "Open-throat" frame extensions make handling of bulky jobs possible outside of the press frame.
- This press does not have a lifting mechanism. If a lifting mechanism is needed, order No. 211407.
- Covered by OTC Lifetime Marathon Warranty®.

No. 1825 17-1/2 Ton Press. Has No. 201832 hydraulic ram with 2" stroke, No. 4002 hydraulic hand pump, No. 9650 gauge, No. 9767 hose, adjusting screw, speed crank, ram cap, and pump mounting bracket.

No. 211407 Lifting Mechanism.



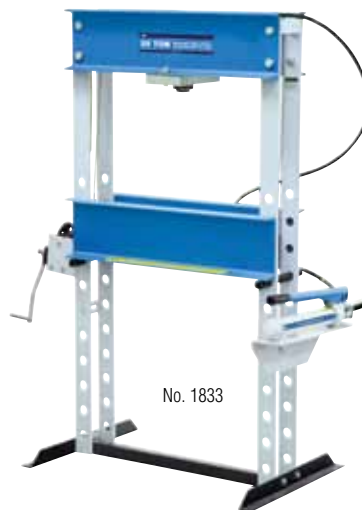
1826

25-Ton Capacity Heavy-Duty "Open Throat" Press

- "Open throat" feature enables ram to be positioned outside of press frame for fast axle bearing removal and installation, as well as other tasks. Rugged press is covered by OTC Lifetime Marathon Warranty®.
- Press bed is raised or lowered with a hand crank, and a spring-return hydraulic ram is laterally adjustable for off-center work at full capacity.

No. 1826 25-ton press. Includes No. 4016 hydraulic hand pump; No. 52025 hydraulic ram with 14" stroke; No. 9652 gauge; No. 303563 hose (3/8" ID x 8'); and pump mounting bracket.

No. 1826A 25-ton press. Includes No. 4020 air/hydraulic hand pump; equipped the same as 1826.



No. 1833

25- and 55-Ton Shop Presses

- Raise and lower bed easily on this tough, economical press that is ideal for pressing rear axle bearings, piston pins, and more.
- Hand-operated winch and cable mechanism adjusts lower press bolster.
- Covered by OTC Lifetime Marathon Warranty®.

No. 1833 25-ton Capacity Press includes OTC No. 4002 hand pump and 6-1/4" stroke ram.

No. 1834 25-ton Capacity Press includes OTC No. 4020 air-driven hydraulic pump and 6-1/4" stroke ram.

No. 1850 55-ton Capacity Press includes OTC No. 4016 hand pump and 6-1/4" stroke ram.

No. 1851 55-ton Capacity Press includes OTC No. 4020 air-driven hydraulic pump and 6-1/4" stroke ram.



1845

55-Ton Capacity Heavy-Duty Presses

- Side-to-side positioning of ram allows full capacity pressing along entire bolster length without buckling or bending. Covered by OTC Lifetime Marathon Warranty®.
- Hydraulic ram features 13" of stroke. Choice of hydraulic power units.

- No. 1845** 55-ton press. Includes single-acting ram No. 52380 with 13" stroke; No. 4044 electric/hydraulic pump; No. 9651 gauge; No. 303563 hose (3/8" ID x 8"); and pump mounting bracket.
- No. 1846A** Same as No. 1845 except has No. 4016 hydraulic hand pump and single-acting ram No. 65458 with 10-1/8" stroke.
- No. 1847** Same as No. 1845 except has a No. 4022 air/hydraulic pump and a No. 9781 hose (3/8" ID x 10").
- No. 1872** 55-ton press. Includes double-acting ram No. 51682 with 13" stroke; No. 4046 electric/hydraulic pump; No. 9651 gauge; No. 36887 hoses; and pump mounting bracket.



100-Ton Economy Shop Press

- Large 35" opening between press uprights allows easy handling of large gears, shafts, sprockets, and other components serviced in truck, construction, and agricultural equipment shops.
 - Hand-operated winch and cable mechanism gives operator precise control in adjustment of lower press bolster to any height.
 - Covered by the Lifetime Marathon Warranty®.
- No. 1854** 100-ton Press. Includes hydraulic ram with 10" stroke; No. 4044 electric/hydraulic pump; No. 9651 gauge; No. 9768 hose (1/4" ID x 8") and pump mounting bracket.



100-Ton Capacity Heavy-Duty Shop Presses

- Wide open uprights allow easy positioning of bars and shafts for straightening or bending.
 - Upper bolster can be lowered for convenient positioning during repetitive jobs.
 - Ram head glides smoothly on rollers for easy horizontal adjustments; rugged press frame will withstand a full capacity load with the ram head in any position across the upper bolster.
 - Covered by OTC Lifetime Marathon Warranty®.
- No. 1857** 100-ton press. Includes single-acting No. 52434 ram with 10" stroke; No. 4008 hydraulic hand pump; No. 9651 gauge; No. 9781 hose (3/8" ID x 10"); and pump mounting bracket.



1858

100-Ton Capacity Heavy-Duty Shop Presses

- Wide open uprights allow easy positioning of bars and shafts for straightening or bending.
 - Upper bolster can be lowered for convenient positioning during repetitive jobs.
 - Ram head glides smoothly on rollers for easy horizontal adjustments; rugged press frame will withstand a full capacity load with the ram head in any position across the upper bolster.
 - Covered by OTC Lifetime Marathon Warranty®.
- No. 1858** 100-ton press. Includes double-acting No. 51683 ram with 13" stroke; No. 61217 3-phase, 220V, 3450 rpm electric/hydraulic pump; and two No. 9769 hoses.
- No. 1858-1P** Same as No. 1858, except it has a No. 4064 2-stage, 1-phase hydraulic pump.



Accessories for 100-Ton Capacity Presses

- No. 50392** Straightening fixtures (pr.).
- No. 1893** V-blocks, 14" long (pr.).
- No. 21332** Pushing adapter (must be used with reducing adapter).
- No. 36469** V-pushing adapter (must be used with reducing adapter).
- No. 43563** Reducing adapter (for double-acting ram).
- No. 43562** Reducing adapter (for single-acting ram, not pictured).



Easy Lever Wheel Dollies

Gives technicians the leverage they need to easily remove or install truck tire-and-wheel assemblies.

- Heavy-duty construction capable of toting 300 pounds.
- Onboard rollers that make stud-hole alignment a snap.
- Spring-loaded kickstand for handy parking.
- Two models that, together, can accommodate tire diameters from 24 to 48 inches.
- Rugged tubular steel construction.

No. 5096A Heavy-duty Easy Lever wheel dolly. With a width of 26", this dolly handles tire diameters of 36" to 48".

No. 5095A Easy Lever wheel dolly. With a width of 22", this dolly handles tire diameters of 24" to 36".



Back Buddy™ II

Remove, transport, service, and install heavy truck brake drums and hub assemblies.

- Fast-motion ratcheting jack with 14 inches of vertical lift.
- Pneumatic rear tires smoothly roll across any shop floor.
- Tilting mechanism to achieve the exact angle necessary for precise reassembly.
- Fold-down handle for open access to the work area.
- Onboard lube tray and toolbox.
- An array of optional adapter sets capable of grabbing almost any truck hub assembly or brake drum, inboard or outboard.

No. 5090 Back Buddy™ II.



Bottle Jacks

- Base, pressure cylinder, and oil reservoir form one internal part, which results in a stronger jack.
- Piston never contacts cylinder, so pressure will be absorbed and not damage jack if vehicle tilts.
- The No. 5213T is telescopic, allowing for very low initial height with high lifting.

No. 5213 12-Ton Bottle Jack.

No. 5221 20-Ton Bottle Jack.

No. 5213T 12-Ton Telescopic Bottle Jack.

Air/Hydraulic Pump

- Ideal all-around power source develops 10,000 PSI at 100 PSI air.
- Two-stage release mechanism; internal relief valve.
- 98 cu. inches of usable oil.
- Covered by OTC Lifetime Marathon Warranty®.

No. 4020 Air/Hydraulic Pump.



DEF Refractometer

SCR and EPA 2010

EPA regulations require all diesel engines manufactured on or after January 1, 2010 to meet lowered NOx emissions standards.

- Most heavy duty engine (Class 7-8 trucks) manufacturers, have chosen to utilize SCR. This Includes Detroit Diesel (DD13, DD15, and DD16 models), Cummins (ISX line), PACCAR, and Volvo/Mack.
- SCR-equipped engines require the periodic addition of Diesel Exhaust Fluid (DEF, a urea solution) to enable the process. DEF is available in a bottle from most truck stops, and some have installed bulk DEF dispensers near the Diesel Fuel pumps. However, to ensure the proper operation of the SCR system, operators must ensure the DEF in their vehicle consists of a 32.5% Urea / Water solution.
- The OTC 5025 makes this a simple and quick process for an operator or technician.

Application:

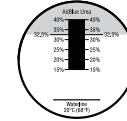
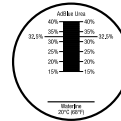
The refractometer is a portable, precision, optical instrument used for measuring the Diesel Exhaust Fluid (DEF) concentration. When a liquid sample is placed on the prism, the light passing through it is bent. The more concentrated the liquid, the more the light will bend. The refractometer contains a reticle, or scale, that is enlarged through the eyepiece to measure this light. The values on the scale have been established to evaluate the DEF condition.



NEW

Scale:

0.5% line graduations
32.5% Indicated
Scale 15-40%
Waterline & 20 Deg C



The scale without any liquid on the prism.

The scale with liquid on the prism. The reading is taken at the point the shadow line crosses the scale.

No. 5025 OTC DEF Refractometer

Kit includes: Refractometer, dropper, lens wipe cloth, instructions and quick guide, screwdriver and case.

Transfer Tanker

- Draining oil from a large displacement engine and getting it to your bulk storage container is a snap.
- Used oil is collected in a reservoir, which then rolls smoothly on 4" free-wheeling casters to your storage location.
- Pump moves five gallons a minute through the 8-foot transfer hose.
- Handle is removable for easy storage.
- Screen attached to reservoir allows assembly to be stored on its side.
- Can also be used for transferring antifreeze.

No. 5077 Low profile Transfer Tanker is only 7-1/2" from floor to top of reservoir. Comes equipped with an electric pump (No. 528093), and a 15-gallon reservoir.

No. 5097 Low profile Transfer Tanker is only 7-1/2" from floor to top of reservoir. Comes equipped with a pneumatic pump (No. 529966), and a 15-gallon reservoir.



Heavy-Duty Wheel Step

- Tire-mounted wheel step provides quick, easy access to underhood components.
- Fits heavy-duty vehicles (Class 7/8).
- 300-pound capacity.
- Installs in seconds; adjusts to fit 22-1/2" to 24" wheel sizes.
- Non-skid platform surface.
- Covered by OTC Lifetime Marathon Warranty®.

No. 1734A Heavy-duty Wheel Step.



Shown Folded

For a complete offering of OE specific tools, go to <http://toolsfortrucks.spk.com/>

HOME | ABOUT SPX | HOW TO ORDER | ORDER FORM | WARRANTY | VIEW CART

SPX | Tools FOR Trucks
SERVICE SOLUTIONS

DETOIT DIESEL
NAVISTAR
ALLISON
VOLVO MACK
OTC HEAVY DUTY

MAXIMUM VEHICLE UPTIME

SPX Corporation manufactures tools and equipment for service professionals, making vehicle repairs easier and faster. Specialty Service Tools are available for all applications and vehicles.

PRODUCT SEARCH
BY PART NUMBER
BY KEYWORD

PRODUCT SHOPPING CART
VIEW

Heavy-Duty Universal Joint Puller

The ideal tool for disassembling drivelines...

- May be used with up to a one-inch impact wrench.
 - Quickly and easily removes sealed U-joint cups without the need for hammering or heat.
 - Will not damage the driveshaft, yoke, bearing cups, or joints.
- Fits practically all Class 7 and 8 trucks, including: Spicer drivelines 1610, 1710, 1760, 1810, 1880 Spicer SPL 140, 170, and 250 "Life Series" Meritor (Rockwell) 16N, 17N, 18N, 1710 Meritor RPL 20 and 25 "Permalube" Series.

No. 5190 Heavy-Duty Universal Joint Puller.



Note: For sale in U.S.A only.

Heavy-Duty Bearing Cup Installer

Quickly and easily installs bearing cups on Dana/Spicer SPL "Life Series" quick-disconnect universal joints.

- Three individual adapters press bearings to the manufacturer's recommended depths.
- Adapters fit Spicer SPL 140, 170, and 250 series drivelines.

No. 5191 Heavy-Duty Bearing Cup Installer.



Heavy-Duty Bearing Cup Installer

Quickly and easily installs bearing cups on bolt-retained universal joints. Fits series 1610 to 1880 and nearly all other heavy-duty truck and machine type u-joints with bolt-retained bearing cups.

- Automatically aligns bearing cups during installation.
- Eliminates the possibility of damage to the needle bearing.

No. 5192 Heavy-Duty Bearing Cup Installer.



U-Joint Tool

Designed for a 1/2" impact wrench, this U-joint tool removes even the most stubborn U-joints with ease. It's compact and easily set up, making it ideal for service calls. And it can be used at different angles and in tight places, eliminating those damaging makeshift methods. The puller's legs have holes for bolt storage.

- Bolts included: 5/16"-24 x 1-1/2", 3/8"-24 x 1-1/2", 7/16"-20 x 1-1/2", M8-1.25 mm x 35 mm.
- Works on most Dana Spicer and Meritor U-joints except Spicer's Life series model SPL250X.

No. 7490 U-joint tool.



Freightliner Rear Suspension Tool

Features:

- Removes Freightliner Rear Suspension bushings in a fraction of the time of traditional methods
- Also can handle Neway AD Series Truck and Tractor suspension bushings.
- Saves on average 45 minutes per bushing (4 per vehicle) on flat rate of 1.5 hours per bushing.
- 15 ton Capacity cylinder

No. 4244 Freightliner Rear Suspension Tool.

No. 4245 Freightliner Rear Suspension Tool – Master Kit includes 2510 Air/Hydraulic Pump.



4244

NEW



4245



Wheel Stud Service Kit

Features:

- Works on most hubs for installation and removal.
 - All sizes of studs.
- Installation done by pushing on the head, eliminating the need for threaded adapters.
 - Reduces number of adapters required
 - Reduces damage to studs
 - Increases ease of use
- Remove and install 10 studs in only 10-15 minutes (compare to 20-30 minutes for more expensive competitive products).
- Can be powered with an impact wrench, no hydraulic power source required.
- No need to remove hub from vehicle.
- Reduces risk of damage to hubs, studs, and bearings when using tool.
- Weighs only 12 lbs., assembled to remove studs and 14 lbs., assembled to install studs.

No. 4295 Wheel Stud Service Kit.

Heavy-Duty Tools: Drivetrain



Truck Clutch Alignment Tools

- These 10-spline shafts are available in the most popular sizes.
- Constructed of a lightweight fiberglass-reinforced nylon body that won't hang up in the clutch disc splines.
- Designed for perfect fit to the spline of the clutch disc...easily supports heavy pressure plates.

To order individually use item number listed below.

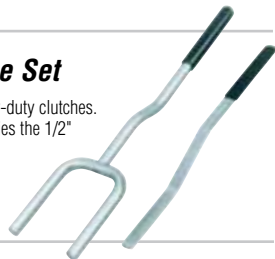


- | | |
|---|--|
| No. 5070 1-1/2" O.D., 30 mm pilot. | No. 7480 1-3/4" O.D., 1" pilot. |
| No. 7072A 1-1/2" O.D., 1" pilot. | No. 5029 2" O.D., 1-1/4" pilot. |
| No. 7073A 1-3/4" O.D., 1-1/4" pilot. | No. 5030 1-3/4" O.D., 1-1/4" pilot. |
| No. 7074A 2" O.D., 1-1/4" pilot. | |

Truck Clutch Adjustment Gauge Set

- Works on manual and self-adjusting pull-type heavy-duty clutches.
- Quickly checks 1/8" clutch pedal free play, and verifies the 1/2" minimum release bearing travel.

No. 5035 Truck Clutch Adjustment Gauge Set.



HD Clutch Adjusting Wrench

- Used for the internal adjustment of Spicer angle-spring and multiple-lever clutches.

No. 7028 Heavy-Duty Clutch Adjusting Wrench.



Clutch Service Set

- Designed for Spicer heavy-duty clutches, the nine tools in this set help with a variety of jobs, from clutch installation and removal to flywheel drive-pin installation to clutch adjustment.
- Includes handy plastic carrying case.

No. 5043 Clutch Service Set.



Spicer® U-Joint Service Set

- Services Spicer 1600/1610 – 1880 series U-joints; and Rockwell 16N, 17N, 18N, and 1710 series U-joints.

No. 7057 Spicer U-Joint Service Set.



Self-Adjusting Clutch Rotating Tool

- This handy tool replaces self-adjuster mechanism on Spicer self-adjusting clutches, allowing you to manually adjust them with a wrench or socket.

No. 5044 Clutch Rotating Tool.



7070A

Truck Transmission Bearing Service Set

The set is designed to help you remove input shaft bearings and countershaft bearings, in both the main and auxiliary boxes of heavy-duty Fuller transmissions. It will also remove end yokes from 1600/1610-1810 series transmissions. The puller delivers 10 tons of mechanical power—essential force for working on big gearboxes.

- Works on Fuller twin-countershaft transmissions: 125, 600, 660, 900, 9500, 1100, 12500, 12600, 13000, 14600, 15600, and 8600 series, 910-913, 915, and 9513.

No. 7070A Truck transmission bearing service set.

No. 7075 Transmission output shaft end yoke remover



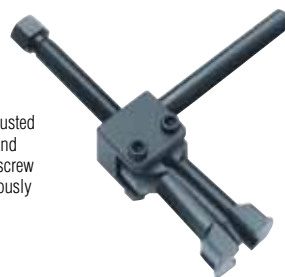
7075

Pilot Bearing Pullers

These tools make quick work of pulling stubborn, rusted pilot bearings. No. 5048 fits 1-1/4" I.D. bearings, and No. 5049 fits 1" I.D. bearings. The puller's forcing screw expands the jaws inside the bearing and simultaneously pushes against the crankshaft.

No. 5048 Pilot bearing puller for 1-1/4" I.D.

No. 5049 Pilot bearing puller for 1" I.D.

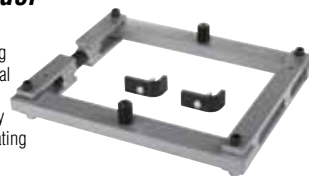


Differential Housing Spreader

Removing and installing differential ring gear assemblies is typically a difficult, time-consuming chore – that is, unless you're using this differential housing spreader. This device uses mechanical screw power to spread the housing, allowing easy removal of the differential assembly while eliminating damage often caused by makeshift methods.

- Works on Dana axle models 30 through 70.

No. 7071 Differential housing spreader.



Slack Check

This tool enables you to quickly check the brake adjustment on class 7 and 8 trucks and trailers having S-cam brakes. It features a sturdy, four-position handle to provide the leverage you need at the proper angle.

- Works on manual or automatic slack adjusters.

No. 5052 Slack check.



Brake Anchor Pin and Bushing Service Set

With the No. 5038, there's no need to remove the bearing hub assembly just to replace the pins and bushings on 16-1/2" S-cam trailer and tractor "Q" brake systems. Much less complicated and time consuming!

- Special tooling and our C-frame press get you past the hub assembly, so you can do the job quickly and professionally without damaging other parts.

- Includes everything needed for removal and replacement.

- Tooling is available separately for the tech who already owns the 7248 C-frame press.

No. 5038 Brake anchor pin and bushing service set

includes C-frame press and tooling in a plastic storage case.

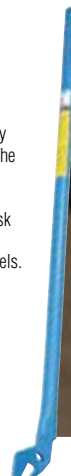


Wheel Tipper

This heavy-duty wheel tipper makes handling those hard-to-manage truck tires easy, in or out of the shop. To use the wheel tipper, simply deflate the tire and break the bead, then hook the wheel tipper to the rim of the wheel. With both hands on the wheel tipper, pull it towards you. The wheel tipper makes an otherwise tough task effortless.

- Designed for both aluminum and steel wheels.
- Reduces back strain when tilting deflated wheel assemblies for maintenance – won't damage wheel rim.

No. 5082 Wheel Tipper.





Slack Adjuster Pullers

These pullers will yank even the most corroded slack adjuster off the S-cam—and do so in just a fraction of the time needed with “heat and beat” methods. Plus, they won’t damage components. Both pullers have a rugged forcing screw and cast steel body. Puller No. 5055 fits many manual types, and the No. 5056 works on most Rockwell, Haldex, Gunitex, and Bendix automatic adjusters.

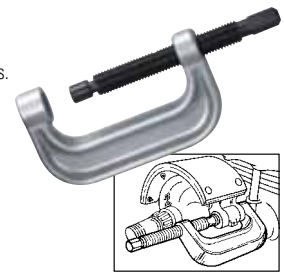
- No. 5055** Manual slack adjuster puller.
- No. 5056** Automatic slack adjuster puller.



Forcing-Screw C-Press

- This versatile forcing-screw C-press has many uses.
- Safely remove and replace automotive universal joints with needle bearings, including GM plastic pin CV U-joints.
- Remove stubborn and rusted brake anchor pins up to 1-1/4” from spiders on heavy-duty vehicles.

No. 7248 Forcing-Screw C-Press.



Hub Oil Seal Puller

- Eliminates bearing and hub damage that can occur when a punch and hammer is used to remove the seal.
- Extra long 28” handle provides leverage, and the unique pulling head design quickly and easily removes the seal in one piece.
- This tool will last a lifetime! Built from the highest quality heat-treated steel.
- Removes hub seals on trailer and truck axles including truck steering axles.

No. 5085 Hub Oil Seal Puller.



Air Brake Service Kit

This kit has the tools needed to remove slack adjusters and push-rod clevis pins used in the S-cam brake systems of class 7 and 8 vehicles.

- Works on manual or automatic slack adjusters.
- Includes Nos. 5055 and 5056 slack adjuster pullers, 5057 brake clevis pin press, and a plastic storage case.

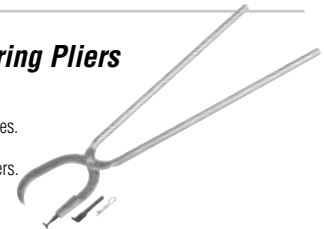
No. 5054 Air brake service kit.



Heavy-Duty Truck Brake Spring Pliers

- 26-1/4” length gives the leverage you need.
- Large jaw opening allows service of widest shoes.
- Has replacement tip.

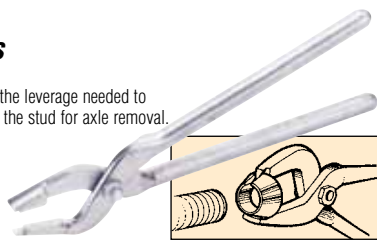
No. 7069A Heavy-Duty Truck Brake Spring Pliers.



Axle Stud Cone Pliers

- Specially designed pliers gives you the leverage needed to expand the cone and remove it from the stud for axle removal.

No. 7077 Axle Stud Cone Pliers.



S-Cam Air Brake Spring Tool

- Safely replace brake shoes on heavy-duty tractors and trailers.
- Simply hook the retaining spring loop and press down. Lever action against the axle.

No. 5081 S-cam Air Brake Spring Tool.

No. 314548 Replacement Hook Kit.



9851

Wheel Bearing Locknut Sockets (8 pt.)

No. 9851 18 wheel bearing locknut sockets (8 pt.) with tool board. Wt., 53 lbs., 14 oz.

No. 62909 Display board only. Wt., 6 lbs., 11 oz.

No.	Qty.	Description	No.	Qty.	Description
1903	1	Locknut socket (2-3/8")	1925	1	Locknut socket (3-3/4")
1905	1	Locknut socket (2-9/16")	1927	1	Locknut socket (3-13/16")
1907	1	Locknut socket (3")	1929	1	Locknut socket (2-5/8")
1909	1	Locknut socket (3-1/4")	1930	1	Locknut socket (2-7/8")
1911	1	Locknut socket (3-1/2")	1931	1	Locknut socket (3-5/8")
1913	1	Locknut socket (3-7/8")	1933	1	Locknut socket (2-7/8")
1917	1	Locknut socket (4-3/8")	1935	1	Locknut socket (3-1/8")
1919	1	Locknut socket (4-7/8")	1937	1	Locknut socket (2-3/4")
1924	1	Locknut socket (3-3/8")	1938	1	Locknut socket (4-1/2")



9852

Wheel Bearing Locknut Sockets

- A selection of popular sizes in 6- or 8-point.

No. 9852 12 wheel bearing locknut sockets and tool board. Wt., 34 lbs., 4 oz.

No. 62910 Display board only. Wt., 5 lbs., 3 oz.

No.	Qty.	Description	No.	Qty.	Description
1904	1	Locknut skt. (2-9/16" hex)	1915	1	Locknut skt. (4-1/8" hex)
1908	1	Locknut skt. (3-1/4" hex)	1921	1	Locknut skt. (2-1/2" hex)
1909	1	Locknut skt. (3-1/4" 8 pt.)	1922	1	Locknut skt. (2-5/8" hex)
1910	1	Locknut skt. (3-1/2" hex)	1923	1	Locknut skt. (2-3/4" hex)
1913	1	Locknut skt. (3-7/8" 8 pt.)	1928	1	Locknut skt. (2-9/16" hex rounded)
1914	1	Locknut socket (4" hex)	1932	1	Locknut skt. (2-7/8" hex)

Locknut Sockets

- These high-grade truck wheel bearing locknut sockets are made of high-strength steel and resist rounding out.
- For manual use only, impact wrench voids warranty.
- Order individually by item number.



Item	Drive	Point	Opening Size
1901	3/4"	(6 pt.)	2-3/32"
1902	3/4"	(6 pt.)	2-3/8"
1903	3/4"	(8 pt.)	2-3/8"
1904	3/4"	(6 pt.)	2-9/16"
1905	3/4"	(8 pt.)	2-9/16"
1906	3/4"	(6 pt.)	3"
1907	3/4"	(8 pt.)	3"
1908	3/4"	(6 pt.)	3-1/4"
1909	3/4"	(8 pt.)	3-1/4"
1910	3/4"	(6 pt.)	3-1/2"
1911	3/4"	(8 pt.)	3-1/2"
1912	3/4"	(6 pt.)	3-7/8"
1913	3/4"	(8 pt.)	3-7/8"
1914	3/4"	(6 pt.)	4"
1915	3/4"	(6 pt.)	4-1/8"
1916	3/4"	(6 pt.)	4-3/8"
1917	3/4"	(8 pt.)	4-3/8"
1918	3/4"	(6 pt.)	4-7/8"
1919	3/4"	(8 pt.)	4-7/8"
1920	3/4"	(6 pt.)	2-1/4"
1921	3/4"	(6 pt.)	2-1/2"
1922	3/4"	(6 pt.)	2-5/8"
1923	3/4"	(6 pt.)	2-3/4"
1924	3/4"	(8 pt.)	3-3/8"
1925	3/4"	(8 pt.)	3-3/4"
1926	3/4"	(6 pt.)	3-3/4"
1927	3/4"	(8 pt.)	3-13/16"
1928*	3/4"	(6 pt.)	2-9/16"
1932	3/4"	(6 pt.)	2-7/8"
1933	3/4"	(8 pt.)	2-7/8"
1934	3/4"	(6 pt.)	3-1/8"
1935	3/4"	(8 pt.)	3-1/8"
1936*	3/4"	(6 pt.)	2-3/8"
1937	3/4"	(8 pt.)	2-3/4"
1938	3/4"	(8 pt.)	4-1/2"
1939	3/4"	(6 pt.)	5-1/4"
1940	3/4"	(8 pt.)	4-1/8"
1941	3/4"	(8 pt.)	4-13/16"

*Fits special "rounded" hex nut found on Dana axles of some Ford trucks. The following are metric size wheel bearing locknut sockets.

1950M	3/4"	(6 pt.)	54 mm
1951M	3/4"	(6 pt.)	55 mm
1952M	3/4"	(6 pt.)	60 mm
1953M	3/4"	(6 pt.)	70 mm
1954M	3/4"	(6 pt.)	71 mm
1955M	3/4"	(6 pt.)	80 mm
1956M	3/4"	(8 pt.)	82 mm
1957M	3/4"	(8 pt.)	90 mm
1958M	3/4"	(8 pt.)	94 mm
1959M	3/4"	(8 pt.)	106 mm
1960M	3/4"	(8 pt.)	110 mm
1961M	3/4"	(8 pt.)	120 mm
1962M	3/4"	(8 pt.)	100 mm

Lug Nut Cap Remover

Chrome-plated lug nut caps found on many heavy-duty trucks and trailers can be tough to remove, and they're easily damaged if you pry them off or use an ordinary cap remover. This tool avoids those problems. It is ruggedly built and features specially coated jaws that won't slip off the caps, no matter how much squeezing force you apply.

- Features cushioned handles.
- No. 5047** Lug nut cap remover.



Truck Pinion Sockets

We've designed and built these sockets to have the proper clearance for yoke and locknut assemblies on a variety of truck transmissions and differentials. The sockets have 3" of usable depth and are 4" long. Using the right tools saves time and effort and eliminates the need to destroy standard sockets by grinding them down to fit tight pinion clearances.

- For manual use only, impact wrench voids warranty.
- To order individually use item number listed below.

No. 9814 Comes complete with tool board and six sockets, 1975 thru 1980 listed below (No. 1981 is not included).

Item	Drive	Point	Opening Size
1975	3/4"	(6 pt.)	2"
1976	3/4"	(6 pt.)	2-1/8"
1977	3/4"	(6 pt.)	2-1/4"
1978	3/4"	(6 pt.)	2-3/8"
1979	3/4"	(6 pt.)	2-5/8"
1980	3/4"	(6 pt.)	2-3/4"
1981	3/4"	(6 pt.)	2-1/2"



Budd Wheel Socket Set (5 piece)

- One each of the sockets listed below comes in a convenient storage box.
- The metric sizes work on the import truck Budd wheels, and the 1-1/2" hex is for American-made trucks with dual rear wheels.
- Extra-deep design lets you remove both nut and stud with just one socket.
- Useable with a 1" square drive impact wrench.
- **To order individually use item number listed below.**

No. 1944 Budd Wheel Socket Set comes complete with the five sockets listed below in a molded plastic case.



Individual Item	Drive	Opening Size
1945A	1"	35 mm hex
1946A	1"	38 mm hex
1947A	1"	41 mm hex
1948A	1"	33 mm hex
1949A	1"	1-1/2" hex



9850

Truck Wheel Bearing Locknut Sockets (6-pt.)

No. 9850 21 wheel bearing locknut sockets with tool board. Wt., 54 lbs., 7 oz.
No. 62908 Display board only. Wt., 5 lbs., 7 oz.

No.	Qty.	Description	No.	Qty.	Description
1901	1	Locknut socket (2-3/32")	1920	1	Locknut socket (2-1/4")
1902	1	Locknut socket (2-3/8")	1921	1	Locknut socket (2-1/2")
1904	1	Locknut socket (2-9/16")	1922	1	Locknut socket (2-5/8")
1906	1	Locknut socket (3")	1923	1	Locknut socket (2-3/4")
1908	1	Locknut socket (3-1/4")	1926	1	Locknut socket (3-3/4")
1910	1	Locknut socket (3-1/2")	1928	1	Lknt. skt. (2-9/16" rounded)
1912	1	Locknut socket (3-7/8")	1932	1	Locknut socket (2-7/8")
1914	1	Locknut socket (4")	1934	1	Locknut socket (3-1/8")
1915	1	Locknut socket (4-1/8")	1936	1	Lknt. skt. (2-3/8" rounded)
1916	1	Locknut socket (4-3/8")	1939	1	Locknut socket (5-1/4")
1918	1	Locknut socket (4-7/8")			

Sprinter Van Front End Kit

- Eight piece kit contains the tools needed to service lower ball joints on 2004–07 Dodge Sprinter vans: tie rod remover / separator; wheel alignment studs; ball joint remover; driver, receiver, and installing rings.
- Use this kit with OTC No. 6736 C-frame.



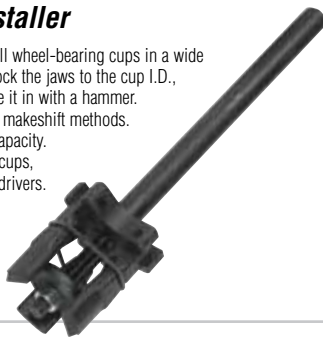
Universal Bearing Cup Installer

This handy, adjustable tool is designed to install wheel-bearing cups in a wide range of heavy-duty axles. Simply adjust and lock the jaws to the cup I.D., slip on the new cup, set it in the bore, and drive it in with a hammer.

The tool helps eliminate the damage caused by makeshift methods.

- Works on axles from 11,000 to 50,000 lb. capacity.
- Adjusts to fit 3-5/8" to 6-1/2" O.D. bearing cups, which adds up to as many as 30 individual drivers.

- No. 7180** Universal bearing cup installer.
- No. 52038** Replacement jaw.
- No. 207561** Replacement retaining spring.



Mack Kingpin Socket

Here is a socket that makes life a little easier for anyone who works on Mack trucks. Designed for 1/2" square drive ratchet or breaker bar, the socket fits the slotted adjusting screw in tapered kingpins used on most Mack front axles (12,000 to 20,000 lbs.).

- No. 5053** Mack kingpin socket.



Truck Front Leaf Spring, Pin and Bushing Service Set

- Delivers 10 tons of hydraulic force to remove and install truck front spring eye pin and bushing assemblies quickly and easily.
- Services bushings with diameters from 1-1/4" through 1-7/8", pin diameters from 7/8" through 1-1/8". Handles all popular OE and aftermarket components, including Horton pin and bushing assemblies.
- Services bushing assemblies, in many cases without removing leaf spring hangers and spring assemblies from the vehicle.
- All accessories are included except the hydraulic hand pump, which must be purchased separately.

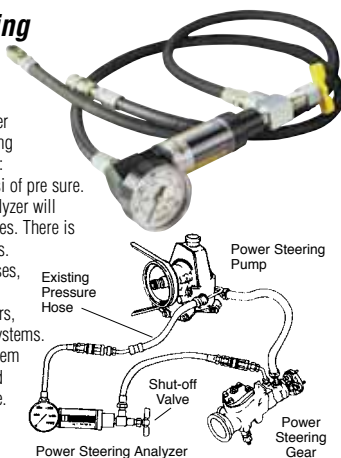
- No. 5080** Truck Front Leaf Spring, Pin & Bushing Service Set.



Heavy-Duty Power Steering Pump Analyzer

- There is only one way to troubleshoot problem components in a heavy-duty power steering system: a flow and pressure reading meter. OTC's new No. 5079 measures both: 1 to 10 gallons oil flow and up to 3,000 psi of pressure.
- When connected in line, this universal analyzer will isolate the failed components in just minutes. There is no wasted time with trial and error methods.
- The set is complete with high pressure hoses, 9/16"-18 standard fittings, and quick disconnect couplers to handle Eaton/Vickers, TRW, Ross, and Shepard power steering systems.

- No. 5079** Heavy-Duty Power Steering System Analyzer with hoses, fittings, and couplers in a handy storage case.



Truck Kingpin and Brake Anchor Pin Pusher

- 30 tons of hydraulic force replace torch and sledgehammer methods.
- Includes precision tooling, hydraulic pump and ram.
- Accommodates kingpins of 7/8" to 2" dia. and 11-1/4" in length.
- Works on many models of trucks and buses.

- No. 4240** Complete Kingpin and Anchor Pin Pusher Set. Includes No. 4002 hydraulic hand pump, No. 9767 hose, No. 9798 hose-half coupler, No. 4121 Power Twin 30-ton ram, and No. 29424 anchor pin adapter.
- No. 4241** Kingpin and Anchor Pin Pusher with Anchor Pin Adapter only.



Diesel Glow Plug Removal Tool

- Removes damaged, stuck-in glow plugs on diesel engines without having to remove cylinder head, saving hours of service time!
- When glow plug tip is melted and plug cannot be removed without breaking it off, this tool is the only answer.
- Tool includes 10 mm and 12 mm split nuts that provide added threads for pulling. One of three furnished spacers is installed under split nut to give a solid base for extraction without breaking glow plug off. Split nut is held with a wrench as the glow plug is unscrewed from the head.
- Services diesels in popular 3/4- and 1-ton pickups, import diesel, ag, and construction vehicles.
- Comes in a plastic storage case.

- No. 6005A** Includes 222888–10 mm and 222887–12 mm split nuts, three spacers (3/16", 1/4", 5/16"), plastic storage/organizer case and instructions.



Manual Sleeve Puller Set

- This manually operated, screw-powered device removes cylinder sleeves from most truck, bus, and tractor engines.
- Adapter plates (not included in the set) accommodate a wide range of bore sizes. See your representative for details.
- The puller enables one technician to handle sleeve-pulling tasks.
- Not recommended for Mack engines.

- No. 1200** Manual Sleeve Puller Set.



17-1/2 Ton Hydraulic Sleeve Puller Set

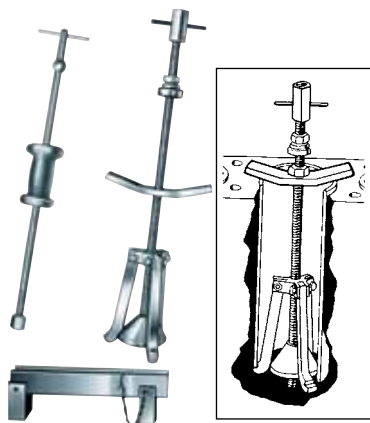
- This hydraulic operated, screw-powered device removes cylinder sleeves from most truck, bus, and tractor engines.
- Adapter plates (not included in the set) accommodate a wide range of bore sizes. See your representative for details.
- The puller enables one technician to handle sleeve-pulling tasks.

- No. 1202** 17-1/2 Ton Hydraulic Sleeve Puller Set.



Sleeve Puller for Wet-Type Sleeves

This tool will remove cylinder sleeves faster than ordinary pullers because it requires very little setup time. Cone adjustment positions the puller jaws quickly, locking bar is tightened. To aid in breaking "frozen" sleeves loose, adjustable bridge is positioned on the cylinder block and the bearing-mounted forcing nut is tightened. Next, bridge is removed and slide hammer assembly is attached. With a few sharp hammer blows, sleeve is pulled. In most cases, job time will average less than two minutes per cylinder.



- The puller features a 5 lb. slide hammer to help bust loose even the most stubborn sleeves.
- Special adapters are unnecessary.
- Adjustable jaws fit sleeves 3" to 6-1/2" in diameter.

No. 1205 Sleeve Puller for Wet-Type Sleeves with 5 lb. slide hammer assembly.

Cummins Water Pump Pulley Tool

This heavy-duty tool is designed to remove or install water pump pulleys on Cummins L10 and M11 engines, 1991 and newer. The installer has a rugged thrust bearing that allows for friction-free pulley installation without damaging pump components.

No. 5071 Cummins water pump pulley tool.



Charged Air Cooler Tester

- Connected to the cooler radiator, this is the easy way to find air leaks in charged air cooling systems on class 7 and 8 trucks.
- Quick disconnect air fittings work on all 3", 3-1/2", and 4" cooler hoses.

No. 5039 Charged Air Cooler Tester.

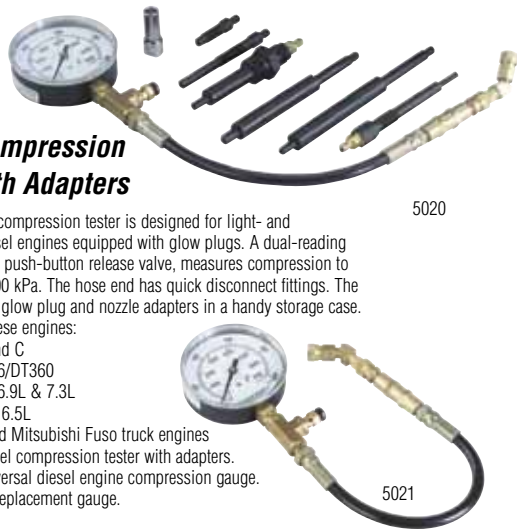


Diesel Compression Tester with Adapters

This easy-to-use compression tester is designed for light- and medium-duty diesel engines equipped with glow plugs. A dual-reading gauge, featuring a push-button release valve, measures compression to 1000 PSI and 7000 kPa. The hose end has quick disconnect fittings. The tester comes with glow plug and nozzle adapters in a handy storage case. Tester services these engines:

- Cummins B and C
- Navistar DT466/DT360
- Ford/Navistar 6.9L & 7.3L
- Detroit 6.2L & 6.5L
- Hino diesel and Mitsubishi Fuso truck engines

No. 5020 Diesel compression tester with adapters.
No. 5021 Universal diesel engine compression gauge.
No. 304802 Replacement gauge.



Nozzle-Tester Adapter Set

This is our universal adapter set for testing injection nozzles on the most popular automotive, agricultural, and construction diesel engines. The set has 17 adapters that connect to our No. 4200 Nozlrater testing unit.

- Includes handy metal storage box.
- 23622—used on 1989–95 Cummins 5.9L, 1983–94 Ford 6.9L and 7.3L.
- 23623—used on 1996–2000 Cummins 5.9L and Navistar 6.6L and 7.8L.

No. 4201 Nozzle-tester adapter set.



Fuel Injector Nozzle Puller

We've designed this puller to remove the pencil-type fuel injector nozzles used in many agricultural and construction engines. The slide hammer action gives a straight, even pull without damaging components.

- Works on Case, Caterpillar, GM, John Deere, Waukesha, and White diesel engines.

No. 7121 Fuel injector nozzle puller.



Nozlrater Diesel Injector Nozzle Tester

The Nozlrater tester enables you to check for leakage, pop off pressure, spray pattern, and chatter. This tool will accommodate a wide range of injectors. We also offer adapters so you can troubleshoot nozzles used in popular automotive, agricultural, and construction engines. Nozlrater features a rugged, lightweight reservoir that holds 7/10 of a gallon of fuel. It is equipped with a replaceable 2-micron filter. The large, dual-scale, high-pressure gauge is protected by a guard and includes an indicator needle to record maximum pressure reached.

- Not designed for Cummins or Detroit injectors.
- No. 4200** Nozlrater diesel injector nozzle tester. 5000 PSI maximum pressure capacity.



Davco Diesel Filter Wrenches

- Found on Caterpillar, Cummins, Detroit Diesel, International, Mack, Mercedes-Benz, Volvo and other engines.
- Durable, stainless steel construction.
- Precise, laser-cut angles.
- Opens vent cap also.
- Soft, ergonomic handle.

No. 6914 Fits Davco Diesel filter models, 232-233-234.

No. 6915 Fits Davco Fuel filters 382 & 384.



Cummins Diesel Fuel Injector Remover Kit

- Kit contains a fuel injector connector tube remover and fuel injector puller. The fuel injector connector tube must be removed before pulling the injector, or both will be damaged.
- Application: 1998-1/2–2002 Dodge pickups and vans with 5.9L 24-valve Cummins diesel turbo engine.

No. 6069 Cummins Diesel Fuel Injector Remover Kit.



Ford Injector Remove/Installer Kit

- Removes and installs injectors without damaging the injector or cylinder head.
- Application: 1994–2003 Ford 3/4- and 1-ton trucks, Super Duty trucks, and vans with 7.3L direct-injected turbocharged (DIT) diesel engine.

No. 6067 Ford Injector Remove/Installer kit.



Master Cummins Diesel Fuel Injection Test Kit

- Includes the fittings and gauge needed to check fuel pressure, fuel volume, and fuel restrictions from the delivery pump to the injection pump.
- Application: 1988–98 Dodge pickups and vans with 5.9L 12-valve, and 1998-1/2–2003 5.9L 24-valve Cummins diesel engines.

Contents:

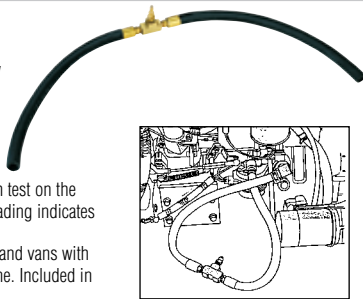
- No. 6077** Quick-disconnect banjo fitting (M14 x 1.5 external).
- No. 7915** Two fuel injection quick-coupler adapters.
- No. 7426** Quick-disconnect banjo fitting (M12 x 1.5 external).
- No. 223336** Gauge assembly.
- No. 6082** Fuel volume test adapter.
- No. 6078** Diesel fuel inlet restriction test adapter.
- No. 6080** Master Cummins Diesel Fuel Injection Test kit.



Cummins Diesel Fuel Inlet Restriction Test Adapter

- Adapter is used to perform a vacuum test on the transfer pump; excessive vacuum reading indicates a fuel inlet restriction.
- Application: 1988–95 Dodge trucks and vans with 5.9L 12-valve Cummins diesel engine. Included in OTC set No. 6080.

No. 6078 Cummins Diesel Fuel Inlet Restriction Test Adapter.



Compressor Drive-Gear Coupling Puller

Here's the solution for removing the coupling from the Cummins Compact and Bendix air compressors found on many Cummins 855 cubic inch engines. The split collet design fits over the coupling, and mechanical force does the work.

- Works on compressors with 1-3/4" O.D. shaft.

No. 7119 Compressor drive-gear coupling puller.



Power Twin® Ram and Pump Set

Center-hole feature permits extending adjusting screws, cables, puller screws, etc., straight through the ram.

- This spring return unit is compact and lightweight.
- Ideal for jobs having restricted working space.

No. 4180 Set includes 4120 17-1/2 ton, 2" stroke single-acting hydraulic ram; 4002 pump; 9650 gauge; 24815 tee; 9767 hose; and 9798 hose half coupler.



Pilot Bearing Puller

- Designed to pull flywheel pilot bearings in close quarters where a slide hammer cannot be used.
- Operates on many models with engine in chassis.
- Capacity is 7/8" to 2" with I.D. reach of 1".

No. 7319 Pilot Bearing Puller.



10-Ton Collision Repair Set

- Exert hydraulic force just where it's needed to lift, spread, bend, or straighten. Handles the high-force jobs you face daily in trailer maintenance or other applications.
- Includes reliable components including 10-ton, 10-1/8" stroke hydraulic ram; air/hydraulic pumping unit; hydraulic hose; four snap-together extension tubes; extension tube coupling; serrated saddle; flat base; 90° wedge head; flex head; storage case.

All set components are covered by OTC Lifetime Marathon Warranty®.
No. 5086 10-ton Collision Repair Set.



Four-In-One™ Puller Set, 7-Ton Capacity

- With the parts included in the PA7 you can quickly assemble a 2/3-jaw puller with standard or long reach.
- 7-ton capacity, the max. reach of 8-3/4", and max. spread of 11" make it ideal for hundreds of pulling jobs.

No. PA7 Four-In-One Puller Set, 7-ton cap. Standard jaw max. reach: 5". Max. spread: 10-1/2". Long jaw max. reach: 8-3/4". Max. spread: 11".



Jimmy Bars

We've forged these bars from chrome alloy steel, then heat-treated them to resist bending and breaking.

- No. 7168** 7/8" Diameter, 30" Long.
- No. 7420** 7/8" Diameter, 46" Long.
- No. 7421** 1" Diameter, 54" Long.

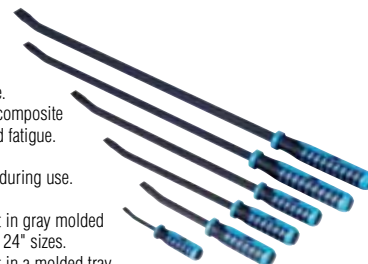


Handled Pry Bars

- Black chrome striking cap allows hitting the bar without handle damage.
- Ergonomic handle – dual durometer composite handle for user comfort; reduces hand fatigue.
- Polished tip with black oxide finish.
- Long-life finish resists rust and wear during use.
- OTC Lifetime Warranty.

No. 8203 3-piece handled pry bar set in gray molded tray. Includes 12", 18", and 24" sizes.

No. 8206 6-piece handled pry bar set in a molded tray. Includes 8", 12", 18", 24", 32", and 36" sizes.



Torque Wrenches

- Clicks when you reach the torque setting.

No. 7379 Torque Wrench, 100–600 ft. lbs. Ratchet-style head, 3/4" sq. drive, 42-1/4" length.
No. 7378 Torque Wrench, 50–250 ft. lbs. Ratchet-style head, 1/2" sq. drive, 19-3/8" length.

Universal Outside Thread Chaser

- Precision dies restore threads to their original condition. Includes 6 dies.
- The capacity is from 1-1/4" to 5" O.D.

No. 7402 Universal Outside Thread Chaser.



EVAP – Leak Detection System

- Vacuum Leak Testing
- Exhaust Leaks
- Crankcase Oil
- Cooling System Testing
- Wind and Water Leaks
- 1-Year Warranty

LeakTamer is the latest generation of leak detection systems, providing more smoke and better control. Solid-state circuitry improves reliability and ensures more consistent smoke output. A wide assortment of accessories make the LeakTamer versatile tools for quickly locating different kinds of leaks.



LeakTamer Evap offers:

- Densest smoke in the industry.
- Newly redesigned smoke chamber and control system.
- More complete line of accessories.
- User refillable.
- Includes smoke producing solution for 500 tests.
- Non-toxic, non-corrosive smoke.

Product Features:

- Large full range flow meter
 - Detects .020" & .040" EVAP leak sizes
 - Flow-test components with full range of flow values
- Pinpoint leaks with Smoke and dye
 - UltraTraceUV® dye deposits at exact location of a leak
 - Finds leaks that smoke alone won't find
 - Introduce to an engine before disassembly to find internal leaks
 - It's the only OEM-Approved dye solution Variable Smoke Flow
 - Helps pinpoint smoke exiting a leak
 - Directional knob shows exact flow position Compact light weight design
 - More powerful diagnostics in smaller package
- Can be used with air or nitrogen
 - Use any inert gas for safer EVAP testing and shop air for all other tests
- OEM approved technology
 - Contains STAR Technology; the ONLY OEM-Approved smoke technology anywhere in the world

Kit includes:

Leak Tamer unit, White/UV combination light with laser pointer, UV glasses, EVAP adapter tool, exhaust cone, cap plug adapters, removal tool, smoke producing solutions enough solution for 500 tests.

No. 6522 EVAP – Leak Detection System.

Smoke Check 1667 Diesel Emission Tester

- Completely portable. No warm-up time needed.
- Digital LCD screen walks you through each step. When testing is complete, a printout of results is produced for verification.
- The partial flow meter clips inside any smokestack; testing can be performed in any weather.
- Meets the latest SAE J1667 specifications.



No. RM1020C Smoke Check 1667 Diesel Smoke Opacity Tester.

Includes partial flow meter, base unit with hand-held display, built-in printer, ambient sensors, two battery chargers one for vehicle or shop, 20 ft. cable, telescoping rod, spring clamp, neutral density filter, and sensor head case.

No. OTC3020C Standard meter listed above with OIL/RPM software and accessories. These options are required for state approval testing in New York and New Jersey.

Bearing Splitter Combo Pack

- This combo pack contains four of OTC's most popular bearing splitters, plus a pulley pulling attachment.
- A rugged organizer case is included.
- Contains: No. 1121 bearing splitter with 15/16" max. spread and 1/4" min. spread, No. 1122 bearing splitter with 2" max. spread and 1/8" min. spread, No. 1123 bearing splitter with 4-5/8" max. spread and 1/2" min. spread, No. 1130 bearing splitter with 9" max spread and 1/2" min. spread, and No. 679 pulley pulling attachment with a 5-7/8" max. and 1-3/4" min. spread.



No. 1183 Bearing Splitter Combo Pack.

Engine Preluber Kit

- Ensures oil is present to internal engine components on the first start of a new or rebuilt engine, or after major engine work is performed.
- Required to prime the oil pump and fill the oil galleries and internal engine components with clean, new oil.
- Connects to engine oil system at the oil pressure sensor on a variety of domestic and import engines.
- Oil pressure sensor adapters included.

No. 6492 Engine Preluber Kit.



Hendrickson Primaax Quick Alignment Socket

- Used to adjust axle alignment on the Primaax air suspension.
- Works on Primaax models 230, 460, and 690 rear suspensions.
- Hendrickson – Approved tool.

No. 1767 Hendrickson Primaax Quick alignment socket.



Hendrickson PRIMAAX® Quick Wrench

- Hendrickson – Approved tool.
- Used to torque cross tube end cap bolts and longitudinal torque rod top pad bolts.
- Reduces maintenance time by eliminating the need to remove the tires to gain access to the end cap bolt.
- Use with the following Hendrickson PRIM AAX suspensions:
 - Type A - PAX 230/460/690 and FMX 240/480 with 8-1/2" Ride Height
 - Type B - PAX 230/460/690 with 10" Ride Height.

No. 1768 Hendrickson PRIMAAX® Quick Wrench.



Hendrickson Bar Pin Adapter Set

Servicing bar pin end bushings used on Hendrickson equalizing beam tandem truck suspensions requires the use of special tooling. OTC's No. 1757 adapter set is used with the beam removed from the truck, and in conjunction with OTC No. 51100 press plate and a 100-ton hydraulic shop press.

The 1757 set, which replaces the No. 1747 set, includes an adapter for installing bushings in older forged beams as well as the fabricated beams introduced in 1999. To remove bushings, use OTC's previously introduced No. 302030 removing adapter and No. 206457 press adapter, both of which may be ordered separately. Reinstall bushings following procedures recommended by the suspension manufacturer.

No. 1757 Hendrickson Bar Pin Adapter Set.



Hendrickson Suspension Bar Pin End Bushing Adapter Set

You can now remove and install worn end bushings on the Hendrickson new style bar pin end bushings without removing the equalizing beam from the vehicle.

The No. 1749 works in conjunction with OTC's No. 1741 and No. 1742 80-ton portable service equipment to do the job quickly, using procedures recommended by the manufacturer.

No. 1749 Hendrickson Suspension Bar Pin End Bushing Adapter Set. For use with OTC No. 1741 and No. 1742 80-ton portable hydraulic service sets.



Hendrickson Press Tooling Set

For 340 and 380/440 series suspensions. Use with a shop press.

This set is the answer for replacing center and end bushings on Hendrickson 340 and 380/440 series suspensions. The 1764 is for use with a 100-ton or larger hydraulic press. The press plate sits on the press bolster to provide a level, cradle-like surface for the beam to rest on during pressing.

No. 1764 Hendrickson Press Tooling Set.



EZ-TAP

HEAVY-DUTY WIRELESS DIAGNOSTIC SYSTEM



Heavy-Duty Diagnostics

Advanced Telematics Revolutionizing the Heavy Duty Industry

- No recurring monthly charges.
- Advanced AirBridge® 2 Technology.
- Reduced latency for super fast vehicle connections.
- Ability to take fast diagnostic snapshots of a vehicle, even as they drive through an AirBridge® 2 hotspot.
- Faster than traditional wireless for most common diagnostic operations.
- Reduced interference and less vehicle connection drops.
- Range improvement over traditional wireless technology.



300 Ft. + range
Note: 1000 Ft. + range with optional remote mounted antenna. (3075-07) sold separately.

- Designed for fleets of any size.
- Purchase Ez-Tap Wireless locking VCI for each remaining truck in your fleet (No. 3075-02).
- Locking VCI connects to the truck to maintain vehicle connect during transportation.

OTC Ez-TAP (Telematics)

- A truck access point providing telematics modes of operation for J1939, J1708 and CAN protocols. This fully RP-1210a compliant access point communicates with the vehicle and transfers vehicle information to your PC. A 9-pin connector is built into the device, eliminating the need for a cable. Connection to the truck is accomplished in only a few seconds.
- **Direct Diagnostics Mode** – for use with OEM diagnostic software.
- **Fault Monitoring** – Selective Fault Reporting.
- **Triggers** – Report deviation and duration for any parameter or event.
- **Parameter Monitoring** – Reports the latest data from vehicle network.
- **File Storage** – Enough onboard memory to store maintenance notes for the lifetime of the vehicle.

Ez-Tap Fleet Telematic Wireless Starter Kit

- Gives the user the ability to switch between Ez-TAP connected vehicles effortlessly.
- Enables users to monitor connected vehicle status locally and remotely.
- Automatically produces reports providing vehicle health and status from vehicles entering the wireless hotspot.
- Simple status lights on the VCI to alert you to vehicle issues immediately when the vehicle is in range.
- Kit includes: Ez-Tap wireless locking VCI, Ez-Base extended range wireless, USB cable, Ez-Suite software.

Note: OEM diagnostic software not included.
No. 3085 Ez-Tap Fleet Telematic Wireless Starter Kit



Advanced Diagnostic Hardware Revolutionizing the Heavy Duty Industry

- The Ez Tap Diagnostic kit permits a Heavy-duty facility to use their OEM software for direct diagnostic mode operation.
- Advanced AirBridge® 2 Technology.
- Reduced latency for super fast vehicle connections.
- Faster than traditional wireless for most common diagnostic operations.
- Reduced interference and less vehicle connection drops.
- Range improvement over traditional wireless technology.



100 Ft. + range

OTC Ez-TAP (Diagnostic Hardware)

- Ez-Tap truck access point hardware supports diagnostic modes of operation for J1939, J1708 and CAN protocols using a shops OEM software. This fully RP-1210a compliant access point communicates with the vehicle and transfers vehicle information to your PC. A 9-pin connector is built into the device, eliminating the need for a cable. Connection to the truck is accomplished in only a few seconds.
- **Direct Diagnostics Mode** – for use with OEM diagnostic software.
- **Fault Monitoring*** – Selective Fault Reporting.
- **Triggers*** – Report deviation and duration for any parameter or event.
- **Parameter Monitoring*** – Reports latest data from vehicle network.
- **File Storage**** – Enough onboard memory to store maintenance notes for the lifetime of the vehicle.

* Will require additional Ez-TRAC software 3085-03.

** Will require additional Ez-File software 3085-01.

Ez-Tap Wireless Diagnostic Hardware Kit

- The Ez Tap Diagnostic kit enables a Heavy-Duty facility to use their OEM software for direct diagnostic mode operation.
- Kit includes: Ez-Tap wireless (non-locking) VCI, Ez-Base wireless adapter, Ez-Tap 9-pin to 6-pin adapter, USB cable and Ez-Tap CD.

Note: OEM diagnostic software not included.
No. 3075 Ez-Tap Wireless Diagnostic Hardware Kit



Non-Locking



Locking

OTC Ez-Trac Software

Software used to collect and view vehicle telematic and diagnostic snapshot information.

- Enables users to monitor connected vehicle status locally and remotely.
- Automatically produces reports providing vehicle health and status from vehicles entering the wireless hotspot.
- Simple status lights on the dashboard to alert you to vehicle issues immediately when the vehicle is in range.
- Works with Ez Config Lite (sold separately 3085-04). to customize triggers and parameter limits for your fleet or vehicle.

No. 3085-03 OTC Ez-Trac Software

OTC Ez-File Software

Allows users to read and write data files to flash memory, as well as upgrade firmware both manually and automatically.

- Allows data, such as vehicle maintenance history information, to be stored on the Ez-TAP.

No. 3085-01 OTC Ez-File Software

Heavy-Duty Scan Standard

Featuring:

- Class 4 – Class 8 truck coverage.
- HD J1587 / J1708 and J1939 CAN, Engine, Transmission/ABS coverage and more!
- Live vehicle data such as: Engine speed Engine ECU temperature Percent acceleration pedal position Engine intercooler temperature Engine coolant temperature Battery volts Alternator volts Ambient air temperature Air inlet temperature
- View and clear diagnostic trouble codes.
- Windows PC software.

Applications:

Tow trucks, recreational vehicles, cement trucks, dump trucks, garbage trucks, buses, step vans, municipal vehicles, refrigerated trucks, and conventional trucks.

Heavy-Duty Scan Targets Class 4–8 Trucks

Category	Class	GVWR2	Representative Vehicles
Light HD Scan Global OBD II	1	0 - 27 kN (0 - 6,000 lbs.)	pickup trucks, ambulances, parcel delivery
	2	27 - 45 kN (6,001 - 10,000 lbs.)	
	3	45 - 62 kN (10,001 - 14,000 lbs.)	
Medium HD Scan Heavy-Duty Software	4	62 - 71 kN (14,001 - 16,000 lbs.)	city cargo van, beverage delivery truck, wrecker, school bus
	5	71 - 87 kN (16,001 - 19,500 lbs.)	
	6	87 - 116 kN (19,501 - 26,000 lbs.)	
	7	116 - 147 kN (26,001 - 33,000 lbs.)	
Heavy HD Scan Heavy-Duty Software	8	147 kN and over (33,00 lbs. and over)	truck tractor, concrete mixer, dump truck, fire truck, city transit bus

Vehicle manufacturers use precise technical definitions and divide trucks into eight classes according to gross vehicle weight rating (GVWR). The table shows vehicle manufacturer truck classifications.

J1587/J1708 & J1939 Heavy-Duty Standard, what does it mean?

SAE J1587/J1708

SAE J1587 is a diagnostic protocol standard developed by the Society of Automotive Engineers (SAE) for heavy-duty and most medium-duty vehicles built after 1985. Up to 1995, individual OEMs used their own connectors. From 1996 to 2001, the 6-pin Deutsch was standard. Beginning in 2001, most OEMs converted to the 9-pin Deutsch. Some OEMs still use the 6-pin Deutsch.

SAE J1708 is an SAE physical specification developed especially for heavy duty vehicles (trucks and buses). The protocol promoted a standard for serial communication between modules with microcontrollers. J1708 describes the physical and data link layer. Almost always used in conjunction with the application layer protocol SAE J1587.

SAE J1939

In the early 90's, the SAE Truck and Bus Control and Communications Sub-committee started the development of a CAN-based application profile for in-vehicle communication in trucks. In 1998 the SAE published the J1939 set of specifications. A J1939 network connects electronic control units (ECU) within a truck and trailer system. The J1939 specification - with its engine, transmission, and brake message definitions - is dedicated to diesel engine applications. J1939 IS SUPPOSED TO REPLACE J1587 / J1708 NETWORKS.

SAE J1939 has been adopted widely by diesel engine manufacturers. One driving force behind this is the increasing adoption of the engine Electronic Control Unit (ECU), which provides one method of controlling exhaust gas emissions within US and European standards. Consequently, SAE J1939 can now be found in a range of diesel-powered applications: vehicles (on- and off-road), marine propulsion, power generation and industrial pumping.



Genisys EVO® USA 2012 Deluxe with Heavy Duty Standard Kit

Includes Genisys EVO featuring the System 5.0 with Code-Assist™ and Repair-Trac® experienced-based Confirmed Fixes™ from Identifix®, NEW USA 2012 Domestic / Asian with ABS and European 2011 software including Pathfinder, Fast fixes™ information, Heavy-Duty Standard software with cables, InfoTech Component Information software, Automated System Test™, OBD II Smart Cable, USA Domestic OEM vehicle cables (for GM, Ford, Chrysler, Jeep, Saturn), manuals, and carrying case.

No. 3874HD Genisys EVO® USA 2012 Deluxe with Heavy Duty Standard Kit.

NOTE: OEM cables may be required for certain vehicle system functions. Additional OEM cables are available individually or in convenient kits - Asian OEM Cable Kit 3421-94, European OEM Cable Kit 3421-75 and ABS/Airbag OEM Cable Kit 3421-54.

Genisys Heavy-Duty Starter Kit

Genisys Heavy-Duty Standard software includes J1587/1708 and J1939 CAN communications. Kit includes 9-pin Deutsch cable, 6-pin Deutsch cable, heavy-duty System Smart Insert, Smart Card, and PC software CD.

No. 3421-79 Genisys Heavy-Duty Starter Kit.

NOTE: System 3.0 or newer
1 GB card required to install.



Heavy-Duty Code Reader

The perfect tool for:

Technicians that need a fast "Toolbox Tool" to read and clear heavy-duty DTC's, heavy-duty shops that need a second tool in the shop and for their mobile repair trucks, or aftermarket general repair shops that are looking for a cost effective solution for Heavy-Duty Standard coverage.

Features:

- Class 4 – 8 truck coverage.
- HD J1587 / J1708 and J1939 CAN, Engine, Transmission/ABS coverage and more for diagnostic trouble codes!
- Read and clear diagnostic trouble codes.
- Provides on screen DTC definitions for heavy-duty standard codes.
- Battery powered for off vehicle use.
- Internet update capable.



Applications:

Tow trucks, recreational vehicles, cement trucks, dump trucks, garbage trucks, buses, step vans, municipal vehicles, refrigerated trucks, and conventional trucks. Don't forget Heavy-Duty Standard compliant construction, marine, agriculture, and other industrial diesel power plant configurations!

No. 3418 HD Reader Kit Includes 3-year warranty, HD Reader tool, 9 Pin Deutsch cable, 6 Pin Deutsch cable, Operations manual, Soft nylon carrying case.



Pro-Link® iQ

Pro-Link iQ is designed to help diagnose engine, brake, and transmission failures. This easy-to-use, advanced tool is engineered to support today's commercial vehicles as well as the more complex vehicles of tomorrow. Using clear menus and message screens, the Pro-Link iQ guides technicians through the most complicated vehicle tests.

- Easy-to-use common user interface across all OEM applications
- Free trial period for all OEM software
- Software easily updated via the Internet
- Large capacity hard drive for future updates
- Light-weight and durable for the shop area
- 8.4" color screen for use in any light
- Touch screen for easy activation of on-screen tabs
- PC and printer connectivity via USB ports
- Can print to most USB printers
- Power from either the vehicle or internal battery for continuous use
- 2 USB ports
- 1 compact flash port
- Protective carrying case

Available iQ Applications

- Generic
- HDS | Medium- and heavy-duty trucks
- OBD II | Light- and medium-duty trucks

OEM

- Caterpillar | ACERT
- Detroit Diesel | DDEC III, IV, V
- International | Engine
- Allison | 1K and 2K, WTEC, CEC1
- WABCO | Air and hydraulic

Kit includes:

PRO-LINK iQ scan tool, iQ Heavy-Duty Standard application, Power and data cable, 6-pin Deutsch adapter, 9-pin Deutsch adapter, 2-cell battery pack, CD manual/driver, Stylus pen and Carrying case.

No. 3110 Pro-Link® iQ



Heavy-Duty Scan

For Heavy-Duty shops that need a second tool in the shop and for their mobile repair trucks. Aftermarket general repair shops that need a cost effective solution for Heavy Duty Standard coverage and do not own a Genisys or other family tool.

Features:

- Brilliant Color Display.
- Class 4 – Class 8 truck coverage featuring "Automatic Protocol Search".
- HD J1587 / J1708 and J1939 CAN, Engine, Transmission/ABS coverage.
- Gasoline and diesel engine coverage.
- Read and clear diagnostic trouble codes.
- Live vehicle data such as: – Engine speed – Engine ECU temp. – Percent acceleration pedal position – Engine intercooler temp. – Engine coolant temp. – Battery volts – Alternator volts – Ambient air temp. – Air inlet temp.
- Global OBD II – All 9 Modes.
- Fast Global OBD II Quick Test
- On-screen text and CD-based Manuals in Spanish, French, and English.
- Vehicle data communication and power LED indicators.
- Demo mode permits operation without vehicle connection.
- Customize data views in line graph, LED, or digital format with the push of a button.
- Three record modes – marker frame, freeze data history, and code triggered record.
- Includes six AA batteries for uninterrupted power supply and off-vehicle use.
- ScanMate Windows PC software.
- Internet upgradable.

No. 3417 HD Scan Kit Includes: HD Scan tool, 9 Pin Deutsch cable, 6 Pin Deutsch cable, OBD II cable, Heavy-duty cable, USB cable, ScanMate software, operations manual, carrying case and 3-year Warranty.

Pocket iQ™

The versatile Pocket iQ reports both engine and transmission functions—and it covers brakes, too.

Gather data quickly and easily. Smart and handy, compact and lightweight, the Pocket iQ puts data at your fingertips.

Pocket iQ key functions and features

- Monitors all vehicle data
- Checks engine speed/load, pressures, temperatures, other data
- Reads and clears active and inactive fault codes
- Displays trip data
- Collects and stores vehicle data from multiple vehicles
- Stores vehicle data in PDF or text format
- Provides J1587 and J1939 data

No. 3110-22 Pocket iQ



Heavy-Duty Scan Tools



Sabre Heavy-Duty Battery and Electrical System Diagnostic Tester

- Heavy-duty for 24-volt battery and electrical systems.
- Diagnoses battery packs in series, parallel, or series/parallel.
- Tests AGM/gel-cell batteries.
- HIGHEST CCA capacity ranges (50–4000 CCA – 24V).

Battery Testing

- Tests the following battery pack configurations: – One battery (6V or 12V). – Two batteries in series (24V); 2, 3, or 4 batteries in parallel (12V). – Two banks in parallel, each bank having 2 batteries in series (24V).
- Uses pack configuration in algorithm design.
- Tester-applied loads used on all pack combinations.

Electrical System Testing

- 12V and 24V charging and starting system tests.
- 12V and 24V diode tests.
- Amp-clamps available (not included) for starting/charging and current draw tests.

Features:

Amp-Clamp Connection – allows current drain tests and starting/charging analysis.

Tests Both FLA (flooded lead acid) and **AGM** (absorbed glass mat) battery types.

Scales – CCA, CA, AHR, MCA, JIS, DIN

User Definable – print header and footer.

Removable Test Cables – easily field replaceable.

PC Interface Port – allows for field updateable software.

IR Compatible – allows optional infrared wireless printer.

Readout Display – backlit for low light conditions, easy to view data in direct sunlight (4 x 20 character display).

Security Cable Connection – protects against stolen or dropped units.

Over-molded Surround with Soft-touch Keys – ruggedly built, easy to use, even with gloves.



No. 3168-HD

No. 3167-HD Sabre HD deluxe kit includes 24-volt heavy-duty battery tester, 15' test leads, instruction manual, molded-plastic carrying case.

No. 3168-HD Same as No. 3167-HD above, but also includes an infrared wireless printer.

Accessories:

No. 3172-15 15' lead set.

No. 3169 Infrared wireless printer.

No. 3173 Low-range amp probe (current drain tests).

No. 3174 High-range amp probe (starting/charging test).



130-Amp Heavy-Duty Battery Load Tester

Applying an industry-leading 130-amp load, this ergonomically designed, heavy-duty battery tester provides accurate, reliable test results in just 10 seconds. It includes uniquely designed clamps for a positive grip on top- and side-post batteries and an extra-large, easy-to-read display.

Features and Benefits

- 130-amp load capacity for accurate results.
- Uniquely designed clamps for both top- and side-post batteries.
- 0–16 volt range.
- Extra-large display with zero adjust.
- Works on both 6V and 12V batteries.
- Side tabs for on-tool clamp storage.

No. 3181 130 Amp Heavy-Duty Battery Load Tester.



OTC Magnetic Induction Heater System

- Fast, effortless removal of glass, emblems, bonded body components, rusty bolts and much more.
- Flameless heat reduces the need for torches, solvents and abrasives.
- Less flame and solvents reduces potential safety hazards and insurance rates.
- Only heats metal objects, enabling it to be used in or near heat-sensitive areas.
- Wide range of heating inductors for increased versatility.
- Easy-to-read heat output meter to quickly verify induction heat.
- Output isolation transformer provides the safest possible operation.
- CE and CSA approval with UL compliance offers proof of OTC 6650 quality construction and safety design.

No. 6650 OTC Magnetic Induction Heater System.



Optional Hail Dent Inductor – No. 543036

The hail dent inductor is an heating attachment that allows technicians to remove soft dents by heating the panel behind the paint, relieving the stress holding the dent, thus reducing its size or eliminating it all together.



Optional Frame Inductor – No. 545057

The frame inductor is capable of heating 1/4" steel plate cherry red (1400F) in just a few seconds, and mildly heating aluminum for stress relieving automotive frame rails and structural panels.

The safe electromagnetically induced heat is very focused and limited to the immediate area where the frame inductor is applied. This allows technicians to work near sensitive components such as wires, hoses, and other items that are easily damaged by the open flame of a torch or rosebud.



5 and 10-Ton Hydraulic Service Jacks

- A built-in safety overload prevents using the jack beyond its rated capacity.
- A convenient foot pedal speeds the lifting, handle lock and release control are located on top of the handle. Handle can be locked into any position from vertical to horizontal.
- Both models have spring-loaded 40" handle.

- No. 1505B** 5-ton capacity with a lifting range of 6" to 22", reach 47", frame height 7-3/4", and floor space of 56" x 14-3/4".
- No. 1510B** 10-ton capacity with a lifting range of 5-3/4" to 22", reach 51", frame height 9-3/4", and floor space of 60" x 18".



5- & 10-Ton Capacity Air/Hydraulic Service Jacks

- Bring the versatility of air-assist operation to your shop's lifting tasks. The 10-ton model can also be operated manually, when shop air is not available.
- Huge front wheels mounted in bearings provide trouble-free service life. Rugged steel frame members.
- Rear swivel casters make spotting the jack easy. Spring-loaded handle may be locked in three positions, from horizontal to vertical.

- No. 1507A** 5-ton Air/Hydraulic Service Jack.
- No. 1511A** 10-ton Air/Hydraulic Service Jack.



20-Ton Hydraulic Service Jack

- Built of the highest quality heavy-gauge steel, this jack features precision hydraulics for a lifetime of hard work.
- Low-profile stance and extended height add to versatility. This jack will lift everything from cars, to trucks, to heavy-duty commercial vehicles. Huge metal wheels and swivel casters roll effortlessly on internal bearings.
- Either the foot pedal or jack handle may be used for pumping action. Counterbalanced, spring-assisted handle has a three-position lock.
- Lifting range is 7-1/2" to 24" with a frame height of 10-1/4" and overall reach of 96". Handle length is 42" and saddle diameter is 7-1/2".

- No. 1512** 20-ton Service Jack.



2,000 lb. Capacity Low-Lift Transmission Jack

- Adapter plate for Eaton® Fuller® Road Ranger® transmissions.
- Covered by the OTC Stinger two-year warranty.
- Height range: 6-1/2" to 35".
- Safety overload prevents use beyond its rated capacity.

- No. 1522A** 2,000 lb. Capacity Low-Lift Transmission Jack.



1,000 lb. Capacity Low-Lift Transmission

- Universal mounting head, with adjustable brackets, tilts front to back and side to side.
- Height range: 6-1/2" to 29-1/2".
- Safety chains hold the load securely, even while moving about the shop.
- Wide wheel base with four swivel casters, and two handle grips makes it easy to position under the vehicle.
- Safety overload prevents use beyond its rated capacity.
- Pump handle rotates a full 360° for use in any position.
- Flash-chromed ram inhibits rust from entering the hydraulic system.

- 1521A** 1,000 lb. Capacity Low-Lift Transmission



Truck Dual Wheel Dolly

- This 1,500 capacity dolly will remove, transport, and replace dual wheel and tire assemblies without strain or struggle. Swivel casters, 3-1/2" front and 3" rear, provide easy maneuverability.
- Floor space is 43" by 42".
- No. 1769A hydraulic jack provides over 6-1/2" of lift and tilts wheel assembly 7° to prevent damage to wheel seal.
- Includes a 6' support chain to hold load in place.

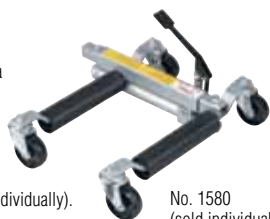
- No. 1769A** Dual wheel dolly.



Stinger Easy Roller™

- Provides simple and efficient method of moving a disabled vehicle around a shop environment.
- Fits tread widths up to 12"
- 4 heavy-duty phenolic casters
- 1,500 lbs. capacity per unit.
- Hydraulic lift mechanism with locking pin.

- No. 1580** 1,500 lb. Stinger Easy Roller™ (sold individually).



No. 1580
(sold individually)

22-Ton Capacity Jack Stands

- Minimum height 13-7/8".
- Maximum height 19-7/8".
- Pin-style (non-ratchet) three positions, 3" intervals.
- Reinforced collar to meet newest ANSI PALD test standards.
- Saddle size 3" x 3-3/4".
- 11" flat base prevents sinking into the surface.

- No. 1780** 22-Ton Jack Stands.



22-Ton Capacity Under-Axle Jack

- Self-retracting, spring return feature.
- Long 49-1/2" T-handle lets you easily position jack under vehicles with long overhangs.
- One pull of the handle activates the self-retracting 22-ton capacity ram without having to crawl underneath the vehicle.
- Jack has large rubber-tired wheels.
- Lifting range:
 - 3/4" saddle Max. height 17-3/4"
 - 1-15/16" saddle Max. height 18-15/16"
 - 3-7/8" saddle Max. height 20-7/8"
- Cylinder stroke, 4-1/2"; extended screw length, 4-1/4"; PSI range, 90-145.

- No. 1788A** Under-axle hydraulic jack with 22-ton capacity self-retracting ram.



Folding Floor Cranes

- These cranes fold up for compact storage, out of your way.
- Front wheels are 3-1/2" with 5-7/8" rear casters.

- No. 2002** 2000 lb. capacity folding floor crane with a reach of 24" to 36". Maximum capacity with boom extended: 500 lbs.
- No. 2004** 4000 lb. capacity folding floor crane with a reach of 26" to 47". Maximum capacity with boom extended: 1,000 lbs.



1,500 lb. Capacity Engine Load Leveler

- Designed to hook to a crane or hoist to handle and position large, bulky components.
- The horizontal tilt can be adjusted to compensate for off-center loads, or adjusted to a certain angle for a component being positioned.

- No. 4305** 1,500 lb. Capacity Engine Load Leveler.



Brake Drum Dolly

- Removes, installs, and transports truck brake drums without physically having to lift them.
- Works on all 15" and 16-1/2" drums found on most class 7 and 8 tractor and trailer brake systems.
- 6" height adjustment aids installation.
- Heavy-gauge steel construction, 8" tires, and 36" handle.

- No. 1543** Brake Drum Dolly.



Two Speed 3-1/2 Ton Service Jack

- Gets to the load quickly.
- One pump to load, three pumps to full height unloaded.
- Extra wide lift range – from 4" to 21".
- A long 48" spring-loaded handle provides rapid return after each pump.
- Heavy-duty construction – rolled edges add strength and resist twisting.
- Pinned 4-3/4" saddle will not lift off during use.
- 2-year Limited Warranty.

- No. 1526** Two Speed 3-1/2 Ton Service Jack.



SUV Jack Pack

Pack includes No. 1526, 3-1/2 ton service jack, combined with No. 1773C, 6-ton jack stands.

- One pump to load; three pumps to full height unloaded.
- Extra wide lift range – from 4" to 21".
- 48" long, spring-loaded handle provides rapid return after each pump.
- Heavy-duty construction – rolled edges add strength and resist twisting.
- Pinned 4-3/4" rubber saddle will not lift off during use and minimizes scuffing of lifting surface.
- Stands have a steel base for strength, self-locking ratchet handle, and a durable baked enamel finish.
- 2-year limited warranty.

- No. 1536** SUV Jack Pack.



Ratchet Style Jack Stands

- Formed and welded steel base for strength, self-locking ratchet handle that cannot be released under load. Durable baked enamel finish resists corrosion.
- Stands conform to ANSI PALD-4 load rating standard, are factory tested before shipment.

No. 1772C Pair of 3-ton Jack Stands.

Base: 8-1/4" x 7-1/2".
Height range: 11" to 17".

No. 1773C Pair of 6-ton Jack Stands.

Base: 11-7/16" x 10".
Height range: 15-3/8" to 24-1/2".

No. 1784C Pair of 12-ton Jack Stands.

Base: 12-5/8" x 11-3/8". Height range: 19-1/2" to 30-3/4".



9300 Stinger Series Bottle Jacks

With a forged base and cylinder to ensure strength and eliminate leaks, you can lift it all. Featuring a chrome piston pump and ram for additional rust resistance. Free seal kit included with each unit to extend product life.

No. 9302	2-Ton	4-5/8" Stroke	Min. Height 7"	Max. Height 14"
No. 9303	3-Ton	4-1/2" Stroke	Min. Height 7-1/2"	Max. Height 14-9/16"
No. 9305	5-Ton	4-13/16" Stroke	Min. Height 7-13/16"	Max. Height 15-5/8"
No. 9308	8-Ton	4-15/16" Stroke	Min. Height 7-13/16"	Max. Height 15-3/4"
No. 9312	12-Ton	6" Stroke	Min Height 9-3/8"	Max. Height 18-5/8"
No. 9314	12-Ton	3-11/16" Stroke	Min. Height 7-1/16"	Max. Height 13-5/8"
No. 9320	20-Ton	6-7/8" Stroke	Min. Height 10-5/8"	Max. Height 20-7/16"
No. 9322	20-Ton	3-7/16" Stroke	Min. Height 7-3/16"	Max. Height 12-5/16"
No. 9330	30-Ton	6-5/8" Stroke	Min. Height 11"	Max. Height 17-5/8"
No. 9350	50-Ton	7-3/16" Stroke	Min. Height 11-3/4"	Max. Height 18-15/16"

Air/Hydraulic Bottle Jacks

- Operate manually or pneumatically, 100 PSI minimum air pressure required.

No. 4313C 12-ton air-assist bottle jack; lift range 9-1/2" to 18-5/8"; 3-1/4" screw.

No. 4321C 20-ton air-assist bottle jack; lift range 9-7/16" to 17-11/16".



Stinger Series 4- & 10-Ton Collision Repair Sets

- Components snap together for quick setups to apply pushing, spreading, or pulling force.
- Components include hydraulics with extension tubes, adapters, and heavy-duty storage case.

No. 1513B 4-Ton Collision Repair Set. Ram has 4" stroke.

No. 1515B 10-Ton Collision Repair Set. Ram has 6" stroke. Storage case comes with wheels.

5-Ton Bar-Type Puller/Bearing Separator Set

- This combination set includes our two most popular bearing "splitters" (2" and 3"), four sets of hex push-puller legs and a bar-type puller head with a 9/16" forcing screw. Separator tools are used with bar puller and legs for a wide variety of pulling jobs.
- The 5" puller cross-bar with a 6-1/4" forcing screw and each of the bearing separators may be used separately or in combination with other pullers or tools.
- Housed in a blow-molded plastic storage case.

No. 4518 Bearing Separator/Bar-Type Puller Set.



Multipurpose Bearing and Pulley Puller Set

- For a wide range of pulling jobs, including bearings, alternators, generators, power steering and crankshaft pulleys, timing gears, and harmonic balancers.
- Set includes drop-forged components, which can be used in a variety of combinations.

Contents of Set:

- 2 - Clamp Bolts
- 3 - Pairs of Capped Bolts
- 2 - Forcing Screws (Live Center): 3/4"-16 x 6-11/16" and 3/4"-16 x 5"
- 2 - Cross-bar Yokes: 3 pin-hole @ 3-1/4" to 5-1/2", 2 pin-hole @ 2-3/8" to 3-3/8"
- 3 - Pairs of Puller Jaws: 1-3/8", 1-5/8", and 1-3/4" max.
- 1 - Pair of Jaw Pins with Ball Spring
- Spread: 3" to 5", Reach: 1" to 2-1/4"
- Housed in a blow-molded plastic storage case.

No. 4534 Multipurpose Bearing and Pulley Puller Set.



Pumps and Rams

No. 9104B 4-Ton Ram with 4" stroke.

No. 9110B 10-Ton Ram with 6" stroke.

No. 9106B Single Speed Hydraulic Pump.

No. 9107B Single Speed Hydraulic Pump.



Bearing Race and Seal Driver Set (10 piece)

- Permits installation of tapered bearing races and seals without damage to the component or housing. Includes a driver handle plus popular bearing and seal drivers ranging from 1.565" to 3.180".
- Tapered side of driver is used to install races. Invert the driver to the flat side to install seals. Set is housed in a blow-molded plastic storage case.
- Includes driver handle with bolt, plus these tool sizes: 1.565", 1.750", 1.965", 2.325", 2.470", 2.555", 2.830", 2.995", and 3.180".

No. 4507 Bearing Race and Seal Driver Set (10 piece).



Bushing Driver Set (19 piece)

- Enables you to remove and install bushings ranging from 3/8" to 1-3/8" in diameter, as used in cars, trucks, tractors, construction equipment, electric motors, and many other components having bushings.
- Includes: Large, medium, and small driver handles with nuts; sixteen bushing adapters ranging from 3/8" to 1-3/8".
- Housed in a blow-molded storage case.

No. 4505 Bushing Driver Set (19 piece).



Metric Bushing Driver Set (14 piece)

- 14-piece tool kit contains adapters: 10-12 mm, 14-16 mm, 15-17 mm, 16-18 mm, 18-20 mm, 20-22 mm, 22-24 mm, 25-27 mm, 28-30 mm, 30-34 mm, 32-36 mm, 35-40 mm, 38-42 mm; one small driver handle; one medium driver handle; one large driver handle.
- Aluminum construction won't mar the bushing or affect bushing tolerance, which is critical for efficient operation of the engine, transmission, and hubs.

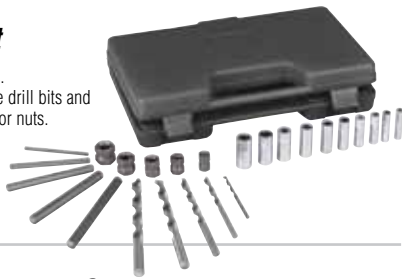
No. 4407 Metric bushing driver set (14 piece).



Screw Extractor Set

- Removes broken studs and bolts.
- Includes ten guide bushings, five drill bits and five screw extractors with extractor nuts.
- Drill bits are left handed to help removal.

No. 4651 Screw Extractor Set.



Blind Hole Bearing Puller Set

- For pulling jobs requiring an internal pull.
- Set includes four collets. Select the appropriate sized collet by comparing it with the application. Insert the collet, expand it to fit the hole, then attach the slide hammer.
- Four collet sizes: 3/8" to 1/2", 9/16" to 11/16", 5/8" to 1", and 1" to 1-1/4".
- Set includes a 2-1/2 lb. slide hammer with T-handle.
- Housed in a blow-molded plastic storage case.

No. 4581 Blind Hole Bearing Puller Set.



Heavy-Duty Snap Ring Pliers Set (2 piece)

- Heat-treated steel "circlip" pliers for large equipment repair. Replaceable tips and spring ratchet locking mechanism to securely hold against snap ring tension.
- Internal plier's capacity 3-1/16" to 6-1/4" (78mm to 159mm) snap rings.
- External plier's capacity 3-1/2" to 6-1/2" (89mm to 165mm) snap rings.
- Blow-molded storage case includes extra sets of replaceable 0.12" (3mm) dia. tips: straight, 45°, and 90°.

No. 4513 Heavy-Duty Snap Ring Pliers Set.



Snap Ring Pliers Set - Internal/External

- For internal or external snap rings; thumbscrew permits quick conversion.
- Made of heavy-gauge tempered steel. Also includes two stainless steel handled picks.
- Contained in a blow-molded plastic storage case.
- Contents of Set: No. 4512-1 .090" tip - straight pliers No. 4512-2 .090" tip - 90° pliers No. 4512-3 .070" tip - straight pliers No. 4512-4 .070" tip - 90° pliers No. 4512-5 .047" tip - straight pliers No. 4512-6 .047" tip - 90° pliers No. 4512-7 .038" tip - straight pliers No. 4512-8 .038" tip - 90° pliers No. 4512-9 Straight tip pick No. 4512-10 90° tip pick

No. 4512 Snap Ring Pliers Set.

7-in-1 Wire Stripper and Crimper

- Strips insulation off electrical wires ranging from 10 AWG—22 AWG (0.6mm—2.6mm) in diameter. Pliers on tip of jaw for looping or grabbing wire in tight places.
- Heat-treated steel jaws cut solid or multi-strand wire.
- Screw cutter shears screws clean, with no thread clean-up required. Works on machine screw sizes 4-40, 5-40, 6-32, 8-32, 10-24, and 10-32.
- Crimps insulated and non-insulated wire terminals, 7mm—8mm spark plug wire connectors.

No. 4498 7-in-1 Wire Stripper and Crimper.



Ratcheting Terminal Crimper

- Heavy-gauge steel crimping tool designed for insulated wire terminals.
- Ratcheting action crimps terminal to correct tightness on wire, making rimping fast and easy.
- For wire sizes: AWG 22-18 (0.6 mm-1.0 mm) red terminal; AWG 16-14 (1.3 mm-1.6 mm) blue terminal; AWG 12-10 (2.0 mm-2.6 mm) yellow terminal.
- Insulated handles with compound mechanical leverage for power.

No. 4497 Ratcheting Terminal Crimper.



Angle-Tip Relay Pliers

- Designed to remove and install relays, which are usually located in confined, hard-to-reach areas.
- Specially coated tips offer a solid grip on the relay.

No. 4493 Angle-Tip Relay Pliers.



Interchangeable Punch and Chisel Set

- Safety protective handle allows easy grip and protects hand from being hit by hammer.
- 12 punches and chisels: 1 cape chisel: 1/4" wide blade 5 flat chisels: 1/2", 5/8", 3/4", 7/8", and 1" wide blades 2 taper punches: 1/8" and 1/4" diameter 2 pin punches: 3/16" and 1/4" diameter 2 center punches: 1/8" and 3/16" diameter
- Double-locking ball detent holds punch or chisel securely in the driver handle.

No. 4605 Interchangeable Punch & Chisel Set.



Adjustable Oil Filter Pliers

- Forged jaws with sure-grip teeth grab the filter for easy removal.
- Slip-joint ratchet and lock mechanism allows a secure grip on filters.

No. 4560 Small Adjustable Oil Filter Pliers. Pliers is 13-1/2" long and fits filters ranging from 2-1/4" to 5" (57 mm to 127 mm) in diameter.

No. 4561 Large Adjustable Oil Filter Pliers. Pliers is 18" long and fits filters ranging from 3-3/4" to 7" (95 mm to 178 mm) in diameter.

No. 4562 Adjustable Oil Filter Pliers Set. Includes both the No. 4560 and No. 4561 listed above.



Heavy-Duty Oil Filter Wrenches

- Features a 1/2" wide steel band that can stand up to the high torque needed to remove filters from trucks, tractors, and other heavy equipment.
- Use with a 1/2" drive ratchet or breaker bar.

No. 4555 Heavy-Duty Oil Filter Wrench for filter dia. of 4-1/8" to 4-21/32" (104 mm to 118 mm).

No. 4556 Heavy-Duty Oil Filter Wrench for filter dia. of 4-21/32" to 5-5/32" (118 mm to 131 mm).

No. 4557 Heavy-Duty Oil Filter Wrench for filter dia. of 5-5/32" to 5-21/32" (131 mm to 144 mm).

Truck Brake Spring Pliers

- Designed to remove and install the brake shoe return springs on medium-duty and heavy-duty drum brakes.

No. 4592 Truck Brake Spring Pliers.



Universal Filter Wrench

This filter wrench will stand up to the job of removing nearly any spin-on filter (up to 6"). Universal design permits use on most vehicles. The tough 2" wide nylon strap holds firmly. In fact, the more leverage applied, the tighter it grips.

- Accommodates a 3/8" drive ratchet.

No. 7062A Universal filter wrench.



3-Leg Oil Filter Wrench

- Fits filter diameters ranging from 2-1/2" to 5-1/4" (65 mm to 135 mm).
- Knurled legs provide extra gripping power.
- To turn the tool, use a 1/2" drive ratchet in the ratchet drive or a 13/16" wrench on the nut.

No. 4568 3-Leg Oil Filter Wrench.



OTC Tire Bead Seater

The Tire Bead Seater is used when a tire, new or used, is mounted on a wheel and the tire bead does not touch both sides of the wheel, making inflation possible. The air trigger on this tool expels a tremendous burst of air that inflates the tire to seat it to the wheel rim. This allows the tire to be inflated to the recommended pressure through the tire valve.

- The Tire Bead Seater is equipped with unique configurations that enhance ease of use, productivity and safety for technicians looking to get the job done right every time.
- Unlike other options out there, the Tire Bead Seater's ASME certified 13-gallon tank is designed with a nozzle and valve connected via hose assembly, giving the user more control rather than requiring them to hold the weight of the tank.
- The trigger style discharge valve allows for optimum airflow control while allowing both hands to firmly hold the nozzle/valve assembly, critical for effective and safe use. Wheels and handle function in either the vertical or horizontal position for easy mobility and storage.
- Unique nozzle design significantly reduces "blowback recoil" and contains discharge holes strategically placed for optimum inflation of a wide range of the tire sizes and wheel diameters.
- Air valve included for filling tank, which also provides compressed air for filling the tire while seating the bead, optimum for on-the-road service.



No. 5713



OTC Tire Bead Breaker

- Unique head is designed to provide a large striking area for all angles, while providing the mass needed to break the tire bead.
- Excellent for damaged tires or tires with weak sidewalls where conventional bead breakers will not work.

No. 5728 Tire Bead Braker.



OTC Hands Free Air Chuck

- Perfect for applications where the tire valve is facing the floor while seating the tire bead, such as most dual wheel configurations.
- Hooks on the top bead seat of the wheel and the spring pressure holds the chuck on the tire valve pointing to the opposite side.
- Ball valve included to allow inflation only when needed.

No. 5745 Hands Free Air Chuck.



OTC Tire Spoons All spoons have unique "Convex Slip Head" curved design allows the spoon to slide easily into the tire bead while the spoon bump limits the depth for quick-and-easy operation.		
No. 5716	HD Sliding Tire Spoon 38" extends to 52", 3/4" diameter. Inner slide bar provides hammer action to easily insert and remove the spoon.	
No. 5720	Sliding Dual Tire Spoon 35" and 3/4" diameter. Unique configuration provides mount and demount heads on either end with the aid of a slide hammer mounted mid bar, allowing for hammering either end in or out of the tire bead. Twist-lock feature locks 3.5 lb. slide weight in position.	
No. 5724	Extending Tire Spoon 22" extends to 34", 3/4" diameter. Twist-lock feature allows the spoon to be extended to any length and locked into position with a twist of the collar.	
No. 5735-35	35" Curved/Flat Tip Curved Tire Spoon Double end curved tire spoon. Handle knob enables easier spoon pick up. 3/4" diameter.	
No. 5736-24	24" Curved Tire Spoon Handle knob enables easier spoon pick up. 3/4" diameter.	
No. 5736-30	30" Curved Tire Spoon Handle knob enables easier spoon pick up. 3/4" diameter.	
No. 5737-30	30" Flat Tip Curved Tire Spoon Handle knob enables easier spoon pick up. 3/4" diameter.	
No. 5739-24	24" Curved Shank Tire Spoon The curved shank allows improved access for the spoon head around the tire bead or wheel rim. Handle knob enables easier spoon pick up. 3/4" diameter.	
No. 5739-30	30" Curved Shank Tire Spoon The curved shank allows improved access for the spoon head around the tire bead or wheel rim. Handle knob enables easier spoon pick up. 3/4" diameter.	

34788 Ahead of the Game . . .

Fully compliant with SAE J2788 standards!

Fully automatic function lets you recover, vacuum, leak test, charge, and then walk away. Combines simple operation with superior accuracy. The Cool-Tech 34788 recovers, recycles, evacuates, leak tests, and recharges R-134a quickly and accurately. Automatic operation means less attention is needed!

- Automatic Function
- Vacuum Leak Test
- Automatic Refrigerant Refill
- Automatic Air Purge
- Automatic Oil Drain
- Refrigerant Charging
- Refrigerant Management Systems
- Vacuum Function

No. 34788 Cool Tech Recovery/Recycling Unit.



Coolant Exchange Unit

- Our 10 minute exchange process means no more waiting for the engine to warm up!
- Our "engine Off" feature removes pulleys, belts, and fan blades from the safety equation.
- Vacuum mode creates a "push/pull" exchange process allowing the technician to safely remove high pressure in a hot system.
- Leak check feature allows the technician to test for leaks prior to refilling.
- Two clearly marked valves and an easy-to-read gauge make this machine very easy to use.
- No electricity required. 90 psi shop air drives the exchange process, as well as the 2 gpm pump on the waste tank.
- Two external new coolant supply tanks allow on-board storage of two different coolant types.

No. 75700

Coolant Exchange Unit.

- No. 75360 Heavy-duty adapter kit. Links the two tanks for 14 gal. capacity to service class A vehicles. (Note: must have 7-gallon tank No. 75370).



75360

ROBINAIR www.robinair.com

12-39 Rev. 1 ©2012 OTC, Robinair. All rights reserved.

Because of ongoing product improvements, we reserve the right to change design, materials, and specifications without notice. Product shipped may differ from photo(s) shown.