

MUSCLETOOLS

Electronic Diagnostics | Special Tools | Shop Equipment | A/C Tools



PROMOTIONS THROUGH DEC. 31, 2013



Shown
3874MVCI

Applicable kits include:
3875, 3874, 3874MVCI, 3874TPR and 3874HD.

Free Next Year's Software

with the purchase of qualifying OTC Genisys EVO® kits.
Retail value \$850.

Visit otctools.com/promotions.php, or scan here:



Bosch Tech 2 \$700 Rebate

The only authentic General Motors Tech 2 scan tool with full, dealer-level diagnostics. Includes preloaded software that doesn't expire.

Visit boschrebates.com

F00E900977

Tech 2 Pro Optima



Bosch Mastertech VCI \$300 Rebate

An unmatched blend of robust aftermarket diagnostic software combined with authentic OEM dealer-level diagnostics (GM GDS 2, GM Tech2Win and BMW ITSA*).

*Authentic OEM dealer-level diagnostics is purchased from the OEMs' websites.

Visa gift card by mail. Visit boschrebates.com.

F00E900800

M-VCI Trio

F00E900801

M-VCI 2 Kit

F00E900800

shown



NEW SPECIAL TOOLS

OTC launches hammers, lubrication and wire service tools



Swing confidently with Indestructible Best Forged Hammers (B.F.H.™)

Tire Service Applications: Use top hook as a wheel tipper; sledge end hook to drag tire into position. Bead breaking wedge has grooves and a convex shape to help drive tire lube into the bead.

Grease guns, fluid pumps and accessories

Extract and deliver grease or other fluids from bulk containers, transfer fluids from in-vehicle systems through a dipstick tube, power steering reservoir or radiators.

2310 Air Operated Grease Gun Continuous Flow



2340 Heavy Duty Grease Gun Holder



5950A, 5950S, 4472



Wire service like you'd invented it

Service vehicle wiring, including headlamps, brake and instrument lighting, window/mirror controls, trailer harness installation or repair, HVAC motors and fans and more.

FEATURED PROMOTION



Genisys Touch™ Trade Up Promotion

Starting October 15, replace your old professional scan tool with the Genisys Touch and choose from a OTC Tech Scope or OTC TPR Tool.

Learn more on page 2

FEATURED PRODUCTS

Vehicle diagnostics with your smartphone

Get the answers to the cause of the check engine light with Actron U-Scan.

Learn more on page 2

Made for
iPod iPhone



Scan here for a tool demo.

If it's not broken, don't break it

OTC's new Ford Spark Plug Remover Kit is designed to prevent breakage of the spark plugs in Ford Triton 3V engines.

Learn more on page 4

Get a grip

Answer phones, scroll and gesture on all touch screen devices without having to remove your work gloves.

Learn more on page 5



New 3- & 6-Ton OTC Stinger Series Jack Stands

Value-priced, flexible and safe jack stands for light usage in a shop that frequently repairs light duty vehicles.

Learn more on page 6



No Guesswork with Robinair UV Leak Detection

A pre-measured application every time.

Brightest dyes in the industry, exceeds all industry performance standards.

Learn more on page 8



Genisys Touch™ Trade Up Promotion

Effective October 15 – June 30, 2014

Replace your old professional scan tool* with the Genisys Touch and choose from a OTC Tech Scope or OTC TPR Tool.

Details can be found at www.otctools.com

Participate by visiting www.boschrebates.com

*Code readers do not qualify.



3857 Tech Scope (value \$1099) or 3834T TPR (value \$459)



- AutoDetect®** Automatically detects on-tool or web based repair information
- Learn the Test** Videos embedded within live diagnostic sessions don't interrupt work flow
- Coverage** All required OEM adapters from 1996 to 2012 in a pull-apart, durable case with 30 years of vehicle coverage included
- Connectivity** Wi-Fi access & multi-device pairing for maximum shop productivity

3895 – Includes a ruggedized 10" high resolution display tablet, J2534-1 / -2 compliant Vehicle Communications Device Interface (VCI), 10 OEM adapters, OBD II cable, USB cable, 12V power cable, AC power supply and custom carrying case.

OTC Genisys Touch Heavy-Duty Standard

OTC Genisys Touch HD supports two Society of Automotive Engineers (SAE) standards for the heavy-duty industry, J1587 / J1708 and J1930 CAN. Features Class 4 – Class 8 truck coverage, View and clear diagnostic trouble codes and live vehicle data.



3895-07 – Heavy-Duty Standard Stater Kit. Includes 9-pin Deutsch cable, 6-pin Deutsch cable, and heavy-duty security card.



Check out AutoDetect



Learn about Embedded Videos



See the All Makes Cable Kit

VEHICLE DIAGNOSTICS WITH YOUR SMARTPHONE



CP9599 U-Scan

Get the answers to the cause of the check engine light. Simply plug in the adapter in your vehicle and read the code definitions for the codes that caused the check engine light to illuminate with an Android or Apple smartphone.



Wirelessly connects to your iPhone, iPod and Android smartphone



Works with all cars and light trucks 1996 and newer (OBD II & CAN)



Check out U-Scan here

3834T

OTC TPR Activation Tool

The OTC's TPR is a fast and simple to use stand alone TPMS activation tool!

- Lower cost kit for use with the Genisys Touch scan tool or as a stand alone tool.
- Works on vehicle TPMS sensors through 2013.
- Bright graphic display and simple navigation buttons enable vehicle selection for fast activation.
- Automatically adjusts activation output power to eliminate cross activation of near sensors.
- Tool includes a 6 month update subscription from www.tpmsupdates.com



3857

OTC Tech-Scope

The "Tech-Scope" is a 2-channel high speed lab and ignition oscilloscope. It has a millimeter function that can be used as a stand alone device or in conjunction with PC scan. Use it anywhere an oscilloscope or multimeter is needed for fast and accurate automotive diagnostics. This scope is for the technician who wants an all-purpose scope to accurately test all electrical and electronic components on a vehicle. The unique features of this scope strongly compliment the PC scan diagnostic tools.

OTC-700A

OTC 70 AMP Power Supply Battery Charger

- A power supply for Flash Reprogramming is a device that connects to the vehicle's battery and outputs a designated supply of clean DC power.
- Constant voltage output selectable from 13.0 to 14.8V DC
- Output current up to 70 amps
- Fully automatic operation for 12V batteries
- Digital volts and amps display



3829

OTC J2534 Reprogramming Tool

- J2534-1 and J2534-2 Pass through module
- Standard and custom OEM protocols and pin-selections
- Wireless with advanced networking functions
- Does both emission and non-emission related reprogramming

Includes: Vehicle Communication Interface, power supply adapter kit, OBD II cable, power supply cable, USB cable, J2534 training CD, quick start guide, one-year warranty.



3829-700A

OTC Midrange VCI / Power Supply

The 3829-700A offers both a wireless VCI and Power Supply adjustable voltage (13.0 – 14.8V). The VCI does both emission and non emission reprogramming. The power Supply has adjustable voltage (13.0 – 14.8V) settings with automated output amperage up to 70A. This allows the OTC unit to adapt to more OEM applications. The OTC Power Supply also doubles as a fully automatic battery charger for recharging standard, AGM, deep cycle and gel type batteries.



3880X

OTC Automotive Inspection Camera

- Large 3.5" inch high resolution color screen for optimal viewing.
- Detachable 36" camera snake with position hold shaft.
- Images and video are recorded on the included SD card and can be viewed on the camera display or transferred to a computer.

OTC Leak Tamer 30-Day Satisfaction Guarantee

It's a straight forward guarantee. Buy it, try it for 30 days, if you don't find that it helps you get your job done you can return it to your participating authorized dealer and get your money back.



6522

OTC EVAP – Leak Detection System

- Pinpoint leaks with Smoke and dye
 - UltraTraceUV® dye deposits at exact location of a leak
 - Finds leaks that smoke alone won't find
 - It's the only OEM-Approved dye solution
- Compact light weight design
 - More powerful diagnostics in smaller package



FOOE900291

Bosch SMT 300 – Smoke Machine Tester

The Bosch SMT 300 Smoke Machine Tester is a full featured device which allows today's shop to perform various types of vehicle leak testing. The compact design and full complement of accessories makes this an ideal fit for any repair shop needing a workhorse of a smoke tester. It has built in safety features for EVAP testing. Suitable for leak testing of any closed system found on today's vehicles.



3415

OTC CAN Test Box

Breakout Box for Scan Tools

- Connects between Diagnostic Link Connector (DLC).
- Connect leads for increased diagnosis, analysis, and monitoring.

Useful Functions

- LEDs display signal detection
 - Flashing LEDs indicate ECU activity.
- Magnifies DLC
 - Allows monitoring of OBD II data lines.
- Monitors voltage
 - Displays battery voltage.
 - Alarm warning when voltage drops below 11.6v or rises above 15v.



3596J

OTC Oil Light Reset Tool

- The 3596J kit helps eliminate the need to take the vehicle to the dealer or use an OEM scan tool to reset oil service lights.
- Electronic tool set includes the adapters and interface module required to reset the oil service lights on Volkswagen, Audi, Mercedes Benz, BMW, and Volvo.
- The included manual details Oil Light Reset tool procedures as well as the manual reset procedures for domestic and import vehicles.
- The new Oil Light Reset Tool now gives you the ability to update the tool vehicle coverage by connecting to a PC with future update kits.

3596J-UPD – OTC Oil Light Reset Update Kit.

Genisys EVO® Software



3421-146 OTC Genisys 2013 Super Bundle Productivity Kit

This powerful kit maximizes technician productivity with the four most popular Genisys options at a value price — USA 2013 Domestic/Asian with ABS, European 2012 with Code-Assist™ and Repair-Trac® experienced-based Confirmed Fixes™ from Identifix®. Also included, the System 5.0 software with a pre-loaded high speed commercial grade 4 GB memory card for fast installation.

NOTE: This kit is required for Genisys tools with System 3.0 or older software.



3421-147 OTC Genisys 2013 Software Loyalty Kit

This powerful kit recognizes loyal Genisys customers that have System 4.0 or newer software. This kit includes most vehicle coverage ever released at a value price — USA 2013 Domestic/Asian with ABS, European 2012 with Code-Assist™ and Repair-Trac® experienced-based Confirmed Fixes™ from Identifix®.

NOTE: System 4.0 or newer 4GB memory card required for 2013 Software installation minimum. New software application authorization is only obtained by purchasing the appropriate software kits.



3421-148 OTC Genisys 2013 System 5.0 4GB Memory Expansion Kit

The memory card is pre-loaded with 2013 Genisys application software for your convenience. New applications not already authorized require a separate purchase. Kit includes System 5.0 Software and a pre-loaded high speed commercial grade 4GB memory card for fast installation.



3774-37 OTC Nemisys 2013 Domestic/Asian software

New OEM based 2013 Domestic and Asian coverage back to 1983 for engine, body, and chassis systems. Includes the Code-Assist™ Library of experienced-based Confirmed Fixes™ from Identifix® and Data / Sensor Info repair information. This valuable software bundle also includes the Memory Card, Security Cards, Quick Start Guide, and the ScanMate Lite Windows-based PC software CD for downloading updates.



3076 OTC HD Scan with Ez-Tap

- In-shop wireless capability.
- Ez-Tap Wireless Vehicle Communication Interface (VCI) works with OEM diagnostic software.
- One wireless VCI for all your diagnostic software.
- Eliminate cables and cable replacement costs.

Hybrid Multimeter

F00E900101

Bosch MMD 540H Hybrid Multimeter

The Bosch MMD 540H Hybrid Multimeter is a CAT safety rated, auto ranging digital multimeter designed for use in diagnostics of electronic circuits. Whatever your shop services: automotive, fleet, motorcycle, marine or small engine, the MMD 540H has the capability to keep up with your business.

- CAT III (1000v) safety rating for hybrid vehicle circuits.
- Peak, Min/Max readings as fast as 1 millisecond.
- Higher amperage test ranges, up to 20 Amps.
- Inductive RPM clamp for conventional and DIS ignition systems.
- Fused diagnostic test leads for safe trouble shooting (up to 20 amps) at the circuit fuse location.
- K-Type thermocouple for quick temperature measurement.
- Large LCD display with bright back lighting and auto shutdown.



3111PRO OTC Trilingual Scan Tool OBD II, CAN, ABS & Airbag

Fix it Faster! Expanded Domestic and Asian ABS & Airbag coverage. Now with over 4.3 million verified fixes at the touch of a button! Compatible with all 1996 and newer cars and light trucks.

Airbag (SRS) & ABS coverage: 1996-2010 GM, Ford and Chrysler 1996-2009 Toyota, Honda, Hyundai and Nissan.

Enhanced code request For GM, Ford, Chrysler, Honda, Hyundai, Nissan and Toyota vehicles.

Displays additional live engine data: Now over 300+ possible PIDs. View engine RPMs, coolant temperature, Oxygen sensor readings and more!

AutoID™ Automatically retrieves VIN from vehicle and decodes to Year/Make/Model.

Component Locator Text descriptions indicate where the vehicle component is located.

3108N

OTC Pocketscan® Code Reader

- View LIVE engine data.
- Automatically reads DTC's.
- Erases DTCs.
- Reads and displays MIL status.
- Reads and displays I/M monitors.



3109N

OTC Trilingual OBD II/EODB and CAN Scan Tool

- AutoID™ - Automatically selects the vehicle so you don't have to on most 2000 and newer vehicles.
- Graph live data.
- Read and erase diagnostic trouble codes.
- Read and display LIVE sensor data.
- Read and display freeze frame data.



Battery



3167 OTC Battery and Electrical System Diagnostic Tester

- Digital circuitry precisely controls battery test loads to accurately determine battery conditions.
- Tests both flooded lead acid and AGM/gel cell batteries accurately—down to 1 volt state of charge.
- Tests vehicle starting and charging systems with minimal user interaction.
- Tests all 6- & 12-volt batteries with a 50-2000 CCA operating range.
- Scales: CCA, CA, AHR, MCA, JIS, DIN.
- Removable/ auto-sensing 3' leads.

3183

OTC Digital Battery Tester

Speed. Accuracy. Reliability. These are the cornerstones behind the technology in our digital battery testers. No. 3183 tests 12-volt batteries (125-1400 CCAs) and analyzes by measuring multiple parameters within the battery to deliver accurate results. A live voltmeter allows easy starting/charging system testing. Its bright, 4-digit LED display indicates the battery's good/bad status, voltage, and available CCAs. It even compensates for cold temperatures.



0684400732

Bosch BAT 131 - Battery & Starting/Charging System Tester

The BAT 131 is the benchmark in battery testing, and is designed for testing all types of 6V and 12V starter batteries, including lead-acid, gel and fleece batteries/AGM. The rugged, exterior housing is specially designed to survive the harshest workshop conditions and molded perfectly for one-handed operation.

The load free test procedure provides fast, precise and reliable measurement results between 100 and 2000 CCA. In addition to CCA, the BAT 131 can also measure and display to CA, MCA, DIN, SAE, EN, IEC and JIS standards.



4799

Brake Piston Removal Locking Pliers

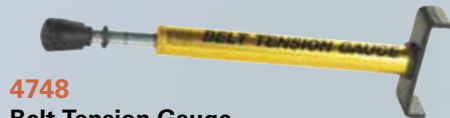
This specially designed locking pliers allows the removal of brake caliper pistons during service or rebuild. The pliers is simply clamped into the I.D. of the caliper piston allowing it to be pulled out of the caliper. Range: 5/8" to 2-1/4" diameter pistons.



4800

Clutch Hub and Alternator Puller

Removes clutch on Big Twins with 3, 5, and 10 fingers. Also works on Sportster transmission sprocket and clutch. Pulls motor sprockets, alternator covers, and many general pulling applications.



4748

Belt Tension Gauge

This easy to use and read tool allows for accurate belt tension to be set after belt replacement, adjustment, or wheel service. Use on secondary drive belts with a 10 lb. spec.



4749

Chain Alignment Tool

Designed to simplify the alignment of the counter-shaft and rear sprocket during chain adjustment or wheel service. Tool clamps to rear sprocket and held with the thumb screw. The rod indicates alignment.



4769

Wheel Rim Protector Set (3 piece)

Fits over the wheel rim to protect the wheel from being scratched or damaged while using tire spoons.



4770

Tire Spoon with Grip

This 13" curved tip tire spoon is strong yet comfortable to use with the form fit hand grip. The rounded head prevents puncturing the tube.



4790

Wheel Bearing Removal/Installation Kit

- This tool assembly will remove and install 3/4", 1", and 25mm I.D. sealed wheel bearings.
- Standard wrenches used in combination with tool. Instructions included along with blow molded case.



4794

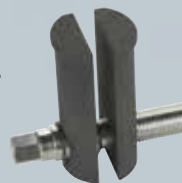
Safety Wire Drill Guide Set, SAE & Metric Set

Here is the perfect way to drill those nuts and bolts for use with safety wire without breaking the drill bit. These guide, align, and support the hex head or the bolt threads. The hex fixture fits nuts and bolt heads that measure up to 1 1/4". The SAE fixture bar is threaded for 1/4"-20, 5/16"-18, 5/16"-24, 3/8"-18, 3/8"-24, 7/16"-14 bolts, and the Metric fixture bar covers M6x1.0mm, M8x1.0, M8x1.25mm, M10x1.25mm, M10x1.5mm, M12x1.5mm sizes.

4796

Steering Neck Bearing Race Remover

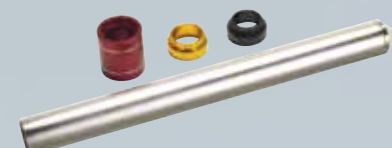
Simple way to remove bearing race in the steering neck. Remover is inserted into neck and bolt is adjusted to tighten the remover against I.D. of steering neck. The remover is then driven from other end of neck to remove race. Fits 1-1/8" to 2-5/8" I.D. bearing race.



4797

Steering Stem Bearing Installation Tool

- Provides a quick and easy method to install lower steering stem bearings. The 14" drive tube accepts the 1.0", 1.4", and 1.75" I.D. bearing adapters.



4802

Universal Pulley Holder Locking Pliers

This adjustable locking pliers can be used to hold pulleys, clutch hubs, flywheels, gears, and sprockets with internal or external teeth up to a 4" diameter. Can also be used on applications with slots or holes with the 5/16" pins.



4840

Piston Ring Compressor Set with Ring Expander

This complete set includes 12 chrome plated compressor sleeves covering 1-3/8" thru 4-3/8 diameter piston applications. Both the ring compressor and ring expander pliers feature a ratcheting lock to hold the handles in position for easy piston and ring installation. Complete with a metal carry case.



4842

Heavy Duty Valve Spring Compressor

Used to compress valve springs for removal or installation. The heavy duty C-frame has a 9" opening and a 5" throat. Kit includes 16mm, 19mm, 23mm, 25mm, and 30mm valve spring retainer adapters.



4844

Cam/Crank Locking Tool, Twin Cam & Dyna

- Designed to lock the cam and crank sprockets together for removal, replacement and proper torquing of the sprocket bolts.
- Double end design covers;
 - Twin Cam 88/B 1999 & Later
 - Dyna 2006 & Later



4852

Adjustable Primary Locking Bar

- Used to lock primary for service work.
- Will work on Chain or Belt Drive style primary drives.
- Adjustable length from 4" to 7-1/4" to cover virtually any application.



4747

Spoke Torque Wrench Set (22 Piece)

- This dual head spoke wrench offers install and removal.
- The click-type torque end applies accurate and equal tension to each spoke.
- Head sizes included for both ends; 5.0mm, 5.6mm, 5.8mm, 6.0mm, 6.2mm, 6.3mm, 6.5mm, 6.7mm, 6.8mm, 7.1mm, and Spline.



NEW OTC Lubrication Service



- 2300 Professional Lever Grease Gun**
- Heavy duty die cast aluminum grease gun head.
 - Grease gun head fitted with automatic air bleeder.
 - Large diameter piston for working in cold.
 - Built-in variable stroke for greasing fittings with limited access.
 - Includes 6" bent steel extension, easy access 24" high pressure hose and 3 jaw slim coupler.
 - 10,000 PSI.
 - For use with 14 oz. grease cartridge.



- 2302 Mini Lever Grease Gun**
- Die cast aluminum grease gun head.
 - Lever action with best in class performance, delivers 6000 PSI.
 - Includes bent 6" steel extension with 3 jaw slim coupler.
 - For use with 3 oz. grease cartridge.



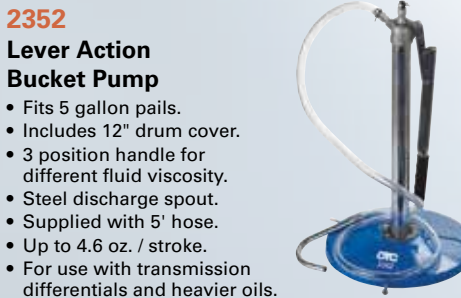
- 2310 Air Operated Grease Gun-Continuous Flow**
- Heavy duty die cast aluminum grease gun head.
 - Grease gun head fitted with automatic air bleeder.
 - Larger pumping chamber, honed for rapid operation.
 - Includes 6" bent steel extension, easy access 24" high pressure grease hose and 3 jaw slim coupler.
 - 4800 PSI.
 - For use with 14 oz. grease cartridge.



- 2332 Quick Connect Greasing Accessory Kit**
- 7 piece Quick Connect Greasing Accessory Kit
 - Includes 1 each of the following quick connect Accessories:
 1. Recessed lube adapter.
 2. Angle lube adapter.
 3. Narrow needle nose adapter.
 4. Seal off dispenser.
 5. Right angled grease coupler.
 6. Heavy duty hose fitted with spring guard and slim coupler.
 7. Grease injector needle 1.42" long x 18G.



- 2340 Heavy Duty Grease Gun Holder**
- Great grease gun storage accessory.
 - Can be mounted to walls, machinery, or heavy equipment.
 - Design to retain your grease gun in high vibration environments.
 - Works with all standard 14 oz. grease guns and 16 oz. suction guns.



- 2352 Lever Action Bucket Pump**
- Fits 5 gallon pails.
 - Includes 12" drum cover.
 - 3 position handle for different fluid viscosity.
 - Steel discharge spout.
 - Supplied with 5' hose.
 - Up to 4.6 oz. / stroke.
 - For use with transmission differentials and heavier oils.



- 2304 Professional Pistol Grease Gun**
- Heavy duty die cast aluminum grease gun head with integrated die cast fixed handle.
 - Grease gun head fitted with automatic air bleeder.
 - Large diameter piston for working in cold.
 - Built-in variable stroke for greasing fittings with limited access.
 - Includes 4" straight steel extension, easy access 24" high pressure grease hose and 3 jaw slim coupler.
 - 7500 PSI.
 - For use with 14 oz. grease cartridge.



- 2334 Grease Fitting Unblocker**
- Opens clogged grease fittings and loosens hardened grease joints.
 - Comes with grease coupler.
 - Includes flexible hose to reach difficult areas.
 - Built in hand guard for safe usage.
 - Includes two spare piston seals.

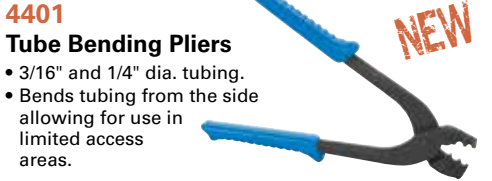


- 2350 Lever Action Drum Pump**
- Fits 15 - 55 gallon drums.
 - Telescoping suction tube.
 - 3 Position Handle for different fluid viscosity.
 - Extra tall pump cylinder allows smaller bucket to be placed under spout.
 - Brass piston rings for extended wear resistance.
 - Threaded outlet spout for use with common hoses.
 - Up to 14 oz. / stroke.
 - For use with oil based fluids, heating oils, motor oils, heavy and light oils, diesel and kerosene.

OTC Brake Service



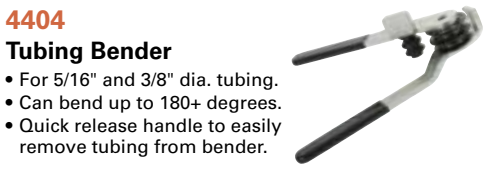
- 6596 Brake Pad Gauge**
- The 6596 Brake Pad Gauge allows for a definitive measurement of brake pads to determine remaining life.
 - Unique design allows for measurement on the vehicle without the removal of any components in most cases (wheel assembly or brake caliper).
 - Quick reference of brake pad condition via color code scale.



- 4401 Tube Bending Pliers**
- 3/16" and 1/4" dia. tubing.
 - Bends tubing from the side allowing for use in limited access areas.



- 4403 Tubing Bender**
- For 3/16" and 1/4" dia. tubing.
 - Can bend up to 180+ degrees.
 - Quick release handle to easily remove tubing from bender.



- 4404 Tubing Bender**
- For 5/16" and 3/8" dia. tubing.
 - Can bend up to 180+ degrees.
 - Quick release handle to easily remove tubing from bender.



- 8104 Vacuum Brake Bleeder**
- This one man brake bleeding system allows for fast and efficient vacuum brake bleeding. Universal rubber fitting holds securely on brake bleeder screw. Attach shop air and use the quick release trigger for on-demand vacuum and hands free operation. Compact size and 17 oz. (500ml) capacity.

OTC Wire Service Tools



- 4470 Butane-Power Flameless MicroTorch**
- Cordless 650° (1250°F) flameless heat.
 - Refillable fuel cell uses standard butane lighter fluid (butane NOT included).



- 4813 Heat Shrink Tubing Set (171 Piece)**
- Protection and insulation for solder connections and components. 2 to 1 shrink ratio with flame or heat gun.



- 4472 Cordless Solder Tool Kit**
- Includes: Soldering iron, conical tip 2.4 mm, chisel tip 2.4 mm, hot knife tip, deflector tip, sponge, wrench, and soldering wire.
- 4472-1** - Soldering iron only.



- 4814 Waterproof Heat Shrink Tubing Set (106 Piece)**
- Waterproof protection and insulation on solder connections and components. Adhesive lined inner wall to seal out moisture. 3 to 1 shrink ratio with flame or heat gun.



- 4460 2-Piece Electrical Connector Separator Tool**



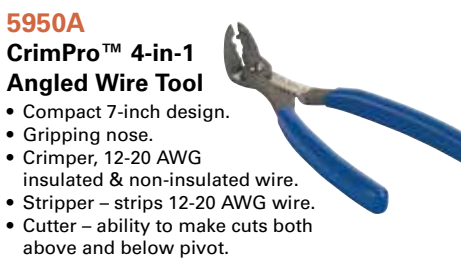
- 5912 Crimpro™ Angled Crimping Pliers**
- Universal crimping design accommodates soft wire - solid or stranded - 10-22 AWG.
 - Cutting feature included for quicker preparation.
 - 9" (228mm) in length, with protective grips to increase leverage and secure crimp.



- 4461 Terminal Release Tool Set**



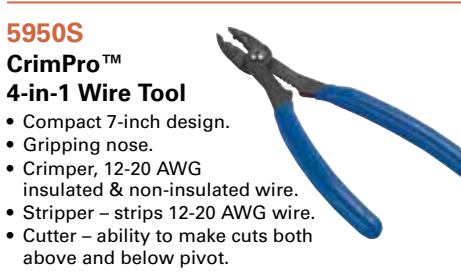
- 1/4" & 3/8" Cable Cutters**
- 4476** - 1/4" cable cutter.
 - 4477** - 3/8" cable cutter.



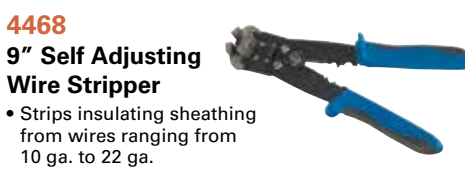
- 5950A CrimPro™ 4-in-1 Angled Wire Tool**
- Compact 7-inch design.
 - Gripping nose.
 - Crimper, 12-20 AWG insulated & non-insulated wire.
 - Stripper - strips 12-20 AWG wire.
 - Cutter - ability to make cuts both above and below pivot.



- 4467 Automatic Wire Stripper**
- Comes with adjustable depth gauge (8mm to 12mm).



- 5950S CrimPro™ 4-in-1 Wire Tool**
- Compact 7-inch design.
 - Gripping nose.
 - Crimper, 12-20 AWG insulated & non-insulated wire.
 - Stripper - strips 12-20 AWG wire.
 - Cutter - ability to make cuts both above and below pivot.



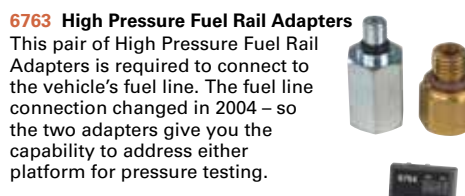
- 4468 9" Self Adjusting Wire Stripper**
- Strips insulating sheathing from wires ranging from 10 ga. to 22 ga.

Ford Tools



- 6918 Ford Spark Plug Remover Kit, Triton 3V**
- Unique design helps prevent breakage by locking the plug porcelain core to the plug hex allowing it to turn as one complete unit.
 - Will also pull plug porcelain core if plug hex only is removed.
 - Detailed Instructions to maximize success rate.
- Works on:
 Ford 4.6L 3V V8 engines used in 2005-2008 Mustang, 2006-2008 Explorer.
 Ford 5.4L 3V V8 engines used in 2004-2008 F-Series, 2005-2008 Expedition, 2005-2008 Lincoln Navigator.
 Ford 6.8L 3V V10 engines used in 2005-2008 F-Series 250-350-450.

Ford 6.0L Service Tools



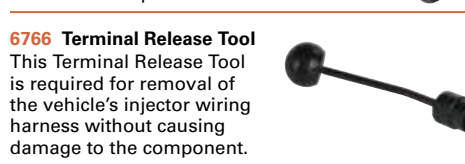
- 6763 High Pressure Fuel Rail Adapters**
- This pair of High Pressure Fuel Rail Adapters is required to connect to the vehicle's fuel line. The fuel line connection changed in 2004 - so the two adapters give you the capability to address either platform for pressure testing.



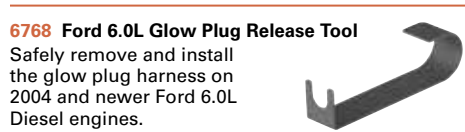
- 6764 Ford 6.0L Diesel IPR Controller**
- When a hard start or no start condition exists, the 6764 allows a technician to close the Injector Pressure Regulator in order to determine if proper injector control pressure is achieved and sustained for the starting process.



- 6765 Injector Pressure Regulator Socket**
- This Injector Pressure Regulator Socket actually combines two OE tools into one. The socket changed in 2005 - so the socket give you the capability to address either platform.



- 6766 Terminal Release Tool**
- This Terminal Release Tool is required for removal of the vehicle's injector wiring harness without causing damage to the component.



- 6768 Ford 6.0L Glow Plug Release Tool**
- Safely remove and install the glow plug harness on 2004 and newer Ford 6.0L Diesel engines.



- 6505 Master Brake Flaring Tool Kit**
- Covers all the capabilities of the following separate kits:
- Single Flare Standard Lines 3/16" - 5/8"
 - Single Flare Metric Lines 4mm - 14mm
 - Double Flare Standard Lines 3/16" - 1/2"
 - Double Flare Metric Lines 4mm - 10mm
 - Bubble Flare Standard Lines 3/16" - 1/2"
 - Bubble Flare Metric Lines 4.75mm - 10mm
- Kit contains flaring bar, arbor press, adapters, tube cutter, deburring tool, all in a hard case.



- 4598 Brake Fluid Tester**
- Tester determines quality of brake fluid.
 - One battery included: 1.5V AAA.
 - Tester automatically powers off after twelve seconds of inactivity.



- 7302 Brake Caliper Pin/Bolt Remover Set**
- Allows for removal of inboard facing pins or bolts to be removed from the outboard side of the brake caliper or vehicle component.
 - For caliper pin removal, simply back the pin bolt out half way and place the tool over the bolt shank to strike against the bolt head.
 - Fits all sizes of pins or bolt shanks ranging from 1/4" (6mm) to 5/8" (16mm).
 - Set includes 7302-1, a striking version and 7302-2, air hammer adapter. Also sold separately.

SmartTech™ Gloves

OTC SmartTech™ Technician Gloves

- Works with touchscreen technology.
- Washable synthetic leather palm with padding ensures comfort and a secure grip.
- Polyester and Lycra material around fingers offer a durable light-weight cover that stretches for a great fit.
- PVC cushions help protect knuckles from injury due to slippage.
- Comfortable polyester back panels include webbing for improved ventilation.



5801SGLV-M – Medium.

5801SGLV-L – Large.

5801SGLV-XL – Extra large.

6618

OTC Universal Bearing Race Puller

- Rugged puller built for many races, sleeves and bearings between 40mm and 60mm.
- Jaws designed with sharp edges for secure grip - even where vertical clearance is negligible.
- Jaws have radius for better attachment to round parts.
- Firm grip based on the adjustable clamping chain.
- Puller design avoids tilting.



6575H

OTC Hydraulic Hub Grappler™ Kit

- An economical way to increase the performance and speed of wheel bearing and hub service.
- Kit includes a through hole 9-ton ram, OTC 2510A air/hydraulic pump, 6 ft. hose with couplers, drive screw and nut.
- Jaws designed and sized to properly fit hub applications and is quickly located on the puller bar without the use of fasteners.
- 3/4" custom drive screw coupled with the special equalizer washer provides smooth operation while proprietary heat treating extends its life 5-10 times longer than similar designs.
- Six adapters increase application coverage. Includes tie rod/ball joint tool and two Ford axle installers.
- Included Application Guide is the most comprehensive on the market.



6939

OTC Broken Bolt Extractor Tool

- Remove frozen, broken or cut off bolts within steering or suspension bushings.
- Can also be used to remove and install wheel studs and other general pressing needs.



6939-1

Broken Bolt Extractor Adapter Set

- Available for use with the 7248 C-Frame.



7175

OTC 3-Piece Indexing Pry Bar Set

- Sizes 10", 12" and 15".
- Indexable to 180° for better access.
- 14 locking positions for leverage in multiple applications.
- Knurled handle assures a sure grip.
- Meets or exceeds ANSI specifications for pry bars.

7172 – 10" Indexing Pry Bar

7173 – 12" Indexing Pry Bar

7174 – 15" Indexing Pry Bar

OTC Tire Service

5713

Tire Bead Seater

The Tire Bead Seater is used when a tire, new or used, is mounted on a wheel and the tire bead does not touch both sides of the wheel, making inflation possible. The air trigger on this tool expels a tremendous burst of air that inflates the tire to seat it to the wheel rim. This allows the tire to be inflated to the recommended pressure through the tire valve.



5702

Tire Bead Seater

- The trigger style discharge valve allows for optimum airflow control while allowing both hands to firmly hold the tank/valve assembly, critical for effective and safe use.
- Unique nozzle design significantly reduces "blowback recoil" and contains discharge holes strategically placed for optimum inflation of a wide range of tire sizes and wheel diameters.
- ASME approved 2-gallon tank with inlet valve, pressure gauge, and relief pressure valve for safety.



5700

Accessory Tire Bead Seater

- 5700 Accessory Tire Bead Seater can be added to the existing surge tank found on most tire changers.



5728

Tire Bead Breaker

- Unique head is designed to provide a large striking area for all angles, while providing the mass needed to break the tire bead.



Tire Service Hammers, Indestructible Handle

- Drop-forged head is induction-hardened for long life, and contains steel locking plates that are specially bonded to ensure the head never becomes loose.
- Use top hook as a wheel tipper; sledge end hook to drag tire into position.
- Bead breaking wedge has grooves and a convex shape to help drive tire lube into the bead.

5789ID-520 – Head Weight 5 lb., Handle Length 20".

5789ID-1032 – Head Weight 10 lb., Handle Length 32".



Tire Spoons

Unique "Convex Slip Head" curved design allows the spoon to slide easily into the tire bead while the spoon bump limits the depth for quick-and-easy operation.

5716 HD Sliding Tire Spoon 38" extends to 52", 3/4" diameter	
5720 Sliding Dual Tire Spoon 35" and 3/4" diameter.	
5724 Extending Tire Spoon 22" extends to 34", 3/4" diameter.	
5735-35 35" Curved/Flat Tip Curved Tire Spoon, 3/4" diameter	
5736-24 24" Curved Tire Spoon, 3/4" diameter	
5736-30 30" Curved Tire Spoon, 3/4" diameter	
5737-30 30" Flat Tip Curved Tire Spoon, 3/4" diameter	
5739-24 24" Curved Shank Tire Spoon, 3/4" diameter	
5739-30 30" Curved Shank Tire Spoon, 3/4" diameter	

5731

Tire Bead Locking Pliers

- Prevents the tire from slipping while mounting the top bead.
- Prevents tire from contacting costly TPM Sensors.



5733

Tire Wheel Wedge Pliers

- Tire Bead Wedge Pliers keeps the tire in the bead drop area to ease mounting and demounting of larger truck and agricultural tires.



5732

Tire Spoon Holding Pliers

- Tire Spoon Holding Pliers is the 3rd hand needed to ease mounting and demounting of tires with tire spoons.



5758

Hub Cap Removal Tool

- Unique slide hammer design eliminates prying against the wheel finish and potential scratches.
- Opposite end has a rubber bumper used to re-install cap with a simple tab.



OTC Ratcheting & PVC Cutters

4411

Ratcheting Hose & PVC Cutter (Standard)

- Cuts hose and PVC up to 1-3/8" dia.
- Features metal frame and ergonomic handles for high leverage.
- Compound ratcheting action provides maximum cutting power.
- Will also cut cable and wires.



4412

Ratcheting Hose & PVC Cutter (Heavy Duty)

- Cuts hose and PVC up to 1-3/4" dia.
- Features metal frame and rubber padded ergonomic handles for high leverage and comfort.
- Compound ratcheting action provides maximum cutting power.
- Will also cut cable and wires.



OTC No.	Head Weight	Handle Length
Double Face Sledge Hammer, Indestructible Handle		
5790ID-624	6 lb.	24"
5790ID-630	6 lb.	30"
5790ID-824	8 lb.	24"
5790ID-830	8 lb.	30"
5790ID-1030	10 lb.	30"
5790ID-1230	12 lb.	30"
5790ID-1430	14 lb.	30"
Club/Hand Drill Hammer, Indestructible Handle		
5791ID-312	2.5 lb.	12"
5791ID-412	4 lb.	12"
5791ID-416	4 lb.	16"
Cross Peen Hammer, Indestructible Handle		
5792ID-216	2 lb.	16"
5792ID-316	3 lb.	16"
Ball Peen Hammer, Indestructible Handle		
5793ID-2414	24 oz.	14"
5793ID-3214	32 oz.	14"

OTC Drain Plug Pro™



5911

OTC Drain Plug Pro™

- Remove oil drain plug without dropping or touching the plug or hot oil.



5961HD

OTC Heavy-Duty Drain Plug Pro™

- For Agricultural, Commercial, and Heavy-Duty Vehicle Applications.

5961

OTC Drain Plug PRO Kit

- Standard drain plug attachment.
- Low profile drain plug attachment.
- 17mm hex attachment for internally driven drain plugs.
- 5/16" bit driver attachment.



7832

GM Torsion Bar Unloader

- Required to safely release the tension on the front suspension torsion bar to service the front suspension.
- Larger design to cover the newer GM truck applications.
- Application: 2011 & newer HD C/K trucks.

MUSCLETOOLS Wheel Service / Equipment

1694100246

**Bosch WBE 4430
Premium Monitor
Display Wheel Balancer**
F00E900663



LED light ring illuminates the work area



**Bosch Wheel Balancers
Superior Accuracy + Superior Value**

Designed for:

- Shop Type: General service
- Usage: Frequent with full tire size coverage

Product Summary:

- 3D automatic data entry
- Monitor display wheel balancer
- Laser for precise weight placement
- LED light ring illuminates the work area where you need it most
- Easy and intuitive operation with visual monitor display program
- Weight location intuition eliminates menu selections and saves time
- Superior Bosch balancing program accuracy to balance it right the first time every time!
- Fast 6 second cycle time
- Auto-locking arm puts tape weights in the correct location every time
- Extended 40mm shaft for larger wheel coverage
- Positioning pedal for fast and simple operation
- Great value with included high performance mounting accessories

1694100051

**Bosch WBE 5210
Heavy Duty Digital
Display Wheel Balancer**



**Bosch Wheel Balancers
Superior Accuracy + Superior Value**

Designed for:

- Shop Type: General service
- Usage: Frequent with full tire size coverage, including heavy duty and bus

Product Summary:

- Compact manual data entry
- Digital display wheel balancer
- Versatile balancers handles both auto passenger and heavy duty applications
- Pneumatic wheel lift standard
- Superior value with standard auto and heavy duty mounting accessories included

SM606500

Bosch LT Truck Centering Kit

- Used with WBE 4430
- Distance Spacer, Double sided LT Cone 4.72" - 6.85"



1694100291

**Bosch TCE 4335THP
Premium Manual
Tilt Tire Changer with
Helper Assembly**
F00E900670



**Bosch Tire Changers
Engineered Smart**

Designed for:

- Shop Type: General service
- Usage: Low to high volume tire service
- Tire Construction: Standard/High Performance/Run Flats

Product Summary:

- Manual tilt tower operation
- Premium tire changer designed for servicing standard and high performance tires
- Outside clamping up to 26" capacity standard
- Includes powerful dual cylinder helper system



OTC Equipment



5300

OTC Stinger 3-Ton Jack Pack

- This jack pack provides a 3-ton service jack (5303) with lifting range of 5-11/16" to 18-1/2" and a pair of 3-ton jack stands (5372) with a base of 8-1/4" x 7-1/2" and height range of 12" to 17-11/16".

2-1/4 - / 3-Ton Hydraulic Service Jacks

- Light, compact design makes them easy and convenient to use.
- Built-in safety overload system/ prevents use beyond their rated capacity.
- Rear swivel casters, for easy maneuvering and positioning.
- These jacks have 5" saddle dia., 21" overall reach, 6-1/4" frame height, 37-1/2" handle length, and a floor space of 14" x 26".

5302 - 2-1/4-ton capacity with a lifting range of 5" to 17-15/16".

5303 - 3-ton capacity with a lifting range of 5-11/16" to 18-1/2".



1780

OTC Stinger 22-Ton Capacity Jack Stands

- Height range is 13-7/8" to 19-7/8".
- Saddle size 3" x 3-3/4".
- Pin-style (non-ratchet) three positions, 3" intervals.
- Reinforced collar to meet newest ANSI PALD test standards.
- 11" flat base prevents sinking into the surface.



5372

OTC Stinger 3-Ton & 6-Ton Jack Stands

- Formed and welded steel base for strength; self-locking ratchet handle cannot be released under load. Durable baked enamel finish resists corrosion.
- Stands conform to ANSI PALD load rating standard; factory tested before shipment.

5372

- Pair of 3-ton jack stands.
- Base: 8-1/4" x 7-1/2".
- Height range: 12" to 17-11/16".

5373

- Pair of 6-ton jack stands.
- Base: 11-1/2" x 10-1/4".
- Height range: 15-9/16" to 23-3/4".

1784D

- Pair of 12-ton jack stands.
- Base: 12-1/16" x 10-7/8".
- Height range: 17-1/2" to 27-1/2".

1577

**OTC Stinger
Low Profile
Fluid Receiver**

- Fluid capacity: 7.5 gallons.
- Constructed of polyethylene plastic for heavy-duty use—yet, only weighs 13 pounds.
- Low profile, only 5" high, it easily slides under passenger cars.
- Suitable for cooling system repair jobs—can be used for antifreeze.
- Includes splash screen to prevent spillage and splashing.



5286

OTC Portable Diesel Particulate Filter Cleaner

- The advent of the 2010 Tier 4 cleaning requirements created the need for a lighter, more portable cleaning system which can be taken into the field to clean filters at the point of service.
- Lightweight and Highly Portable - ideal cleaning system for use in the shop or on a service truck.
- Flexibility - clean DPF's from 6" to 15.5" in diameter using shop or compressed air of at least 100 PSI.
- Fully Automated Operation - once started, the cleaning process can be completed unmonitored, freeing up technician to simultaneously do other work in the shop.
- Focused Air Jet Technology™ - concentrates a precise high pressure stream of air directly into every cell.
- Maximum Efficiency - OTC's unique floating puck prevents "splash back," which maximizes the volume of air entering each cell.
- Easy Maintenance - contains no internal filters that require user maintenance and its rugged design provides maximum durability.



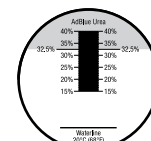
5025

OTC DEF Refractometer

- SCR & EPA 2010
- EPA regulations require all diesel engines manufactured on or after January 1, 2010 to meet lowered NOx emissions standards.

Scale:

- 0.5% line graduations
- 32.5% Indicated
- Scale 15-40%
- Waterline & 20 Deg C



Application:

The refractometer is a portable, precision, optical instrument used for measuring the Diesel Exhaust Fluid (DEF) concentration. When a liquid sample is placed on the prism, the light passing through it is bent, and shows on the scale to indicate the DEF condition.

1788A

**OTC Stinger
22-Ton Capacity
Under-Axle Jack**

- Long 49-1/2" T-handle lets you easily position jack under vehicles with long overhangs.
- One pull of the handle activates the self-retracting 22-ton capacity ram without having to crawl underneath the vehicle.
- Jack has large rubber-tired wheels.
- Cylinder stroke, 4-1/2"; extended screw length, 4-1/4"; PSI range, 90-145.
- Lifting range:

3/4" saddle	Max. height 17-3/4"
1-15/16" saddle	Max. height 18-15/16"
3-7/8" saddle	Max. height 20-5/8"



J-47399

OTC Horizontal DPF Handler

- The Universal mounting assembly adjusts, front to back and side to side for easy DPF handling.
- The height range of 6-1/2" to 29-1/2" is usable for most of today's trucks.
- Safety strap holds the load securely while moving about the shop.
- Size allows for handling of all known DPFs.



5281

OTC DPF Thermal Processing Unit

- Designed to facilitate the cleaning of filters - with high amounts of wet soot, and unburned hydrocarbons.
- Pre-programmed thermal profile controls temperature 'ramp up' and 'cool down' to reduce the risk of cracking the DPF.
- Includes "pre-treat" cycle for oil-soaked filters.
- Holds temperature constant for two hours to ensure complete regeneration of filter.
- Built-in electronic safety lock prevents unauthorized opening of the door when temperatures exceed 200 degrees F.
- Large chamber accommodates various DPF sizes and shapes. Front access door allows for easy access to the thermal chamber.



2510A

OTC Stinger Air/Hydraulic Pump

- 10,000 PSI air/hydraulic pump.
- Internal relief valve.
- Two-stage release mechanism.
- Pump, hold, or release load with pedal control.
- 98 cu. in. usable capacity.
- 3/8 NPT oil port.



OTC Heavy Duty

5105B 1,500 lb. Capacity High-Lift Dual Wheel Dolly

- Effortless air-powered hydraulic lift system for a variety of applications.
- 0 to 42" lifting range.
- Six-inch lateral adjustment.
- Tilt adjustment of +15° to -8° ensures easy alignment.
- Features four swivel casters, two locking, for enhanced mobility.



NEW



5018A Truck Clutch and Flywheel Handler

- Replaces 14" & 15-1/2" clutch assemblies weighing up to 250 lbs.
- 13" low point enables access below side faring.
- Linkage raises load from horizontal to vertical position.
- 360 degree swivel head.

1590 10-Ton Air Lift

- Adjustable lifting saddles and an extra wide stance for extra stability.
- 10 tons of lift at 200 PSI air pressure.
- Lifting range is 13" to 52".
- Automatic mechanical safety catch engages in five height positions.



5092 27.5-Ton Under Axle Jack

- Robust design with completely sealed piston – reduces likelihood of contamination of hydraulic fluid.
- Ergonomic handle design provides convenient location of air valve and release knob.
- Four position handle includes 'stow away' position for convenient storage.
- Complies with latest ASME/PALD standards.
- Minimum retracted height (with saddle) – 8-1/4"
- Maximum lifting height (with saddle only) – 13-1/8"
- Maximum lifting height (with screw extended and large adapter) – 21-3/8"



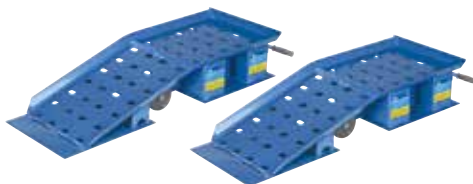
1591A 10-Ton Capacity Combination Air Lift and Support Stand

- Air lift can also be used as a support stand when servicing a vehicle.
- Height range of 16-1/8" to 49-1/4".
- Removable handle and 8' air hose.
- Covered by Lifetime Marathon Warranty®.



20-Ton Truck Ramps

- Long, retractable T-handle enhances mobility.
- Non-skid rubber matting prevents slippage during use.
- Durable, heavy-duty rubber wheels.
- Capacity per pair is 20 tons
- Covered by OTC Lifetime Marathon Warranty®.
- 5268 – 20-ton truck ramps handle up to 10" tread width.
- 5269 – Wide 20-ton truck ramps handle up to 16" tread width.



OTC Transfer Tanker

- Draining oil from a large displacement engine and getting it to your bulk storage container is a snap.
- Used oil is collected in the 15-gallon reservoir, and then rolls smoothly on 4" free-wheeling casters to your storage location.
- Pump moves five gallons a minute through the 8-foot transfer hose.
- Low profile, measures 7-1/2" from floor to top of reservoir.
- Can also be used for transferring antifreeze.

5077 – Transfer Tanker equipped with an electric pump (No. 528093).

5097 – Transfer Tanker equipped with a pneumatic pump (No. 529966).

OTC Service Jacks



5200 Ultra-Low Profile 2-Ton Service Jack

- Minimum saddle height of just 1-7/8".
- Unique, fifth-wheel design provides effortless 360° maneuverability – literally spins on a dime!
- Featuring Polyamide casters – superior to cast wheels due to their high mechanical strength and thermal properties.
- Foot pedal for quick approach of saddle to lifting point.
- Lifting range of 1-7/8" to 20-1/2".
- CE certified, PALD compliant.

2- & 3-Ton Service Jack

- Ergonomic handle for user comfort & easy mobility.
- Foot pedal for quick approach of the lifting saddle to load. Built-in tray for fasteners and tools.
- CE certified, PALD compliant.
- Covered by OTC Lifetime Marathon Warranty®.

5202 – 2-ton service jack.
Min. height 3"; Max. height 18-1/4".

5203 – 3-ton service jack.
Min. height 5-1/2"; Max. height 20-1/2".



6- & 10-Ton Heavy-Duty Service Jack

- Ergonomic handle for user comfort & easy mobility.
- Foot pedal for quick approach of the lifting saddle to load. Built-in tray for fasteners and tools.
- CE certified, PALD compliant.
- Covered by OTC Lifetime Marathon Warranty®.

5206 – 6-ton HD service jack.
Min. height 6-11/16"; Max. height 22-13/16".

5210 – 10-ton HD service jack.
Min. height 6-11/16"; Max. height 23-13/16".



5133 OTC Aluminum Racing Jack Pack

- Jack lifts two tons and weighs only 43 lbs.
- Low profile 3-1/2" makes it perfect for ground hugging, high performance cars.
- 10-1/4" min. height, 15-1/4" max. height.
- Removable, rubber saddle pad protects vehicle and prevents slipping.



1735B OTC 2,000 lb. Capacity Heavy-Duty Motor-Rotor® Repair Stand

- Handles a wide variety of engines, transmissions, torque converters, and rear axles from trucks, tractors, and construction machinery.
- The 50:1 ratio gearbox allows full rotation of mounted unit with just a turn of the crank and locks in position. Easily maneuvered when loaded.
- To ensure engine stability in all positions, this repair stand is equipped with a positive-crank handle locking mechanism.
- Twin-post design, featuring laterally adjustable, 3 position outboard support; provides an extremely stable work-holding unit.
- Locking rear wheels anchor stand in position.

206391 – 6.0L and 6.4L Ford engine adapters. (Works with both the OTC 1735, 1735A and 1735B.)

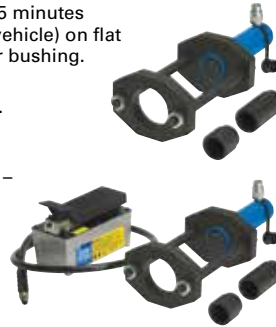


OTC Rear Suspension Bushing Tool

- Removes FAS II Airliner Freightliner Rear Suspension bushings, Neway AD Series Truck and Tractor suspension bushings, in a fraction of the time of traditional methods.
- Saves on average 45 minutes per bushing (4 per vehicle) on flat rate of 1.5 hours per bushing.

4244 – Freightliner Rear Suspension Tool.

4245 – Freightliner Rear Suspension Tool – Master Kit includes 2510A Air/Hydraulic Pump.



4295 Wheel Stud Service Kit

- Installation done by pushing on the head, eliminating the need for threaded adapters.
 - Reduces number of adapters required
 - Reduces damage to studs, hubs and bearings
 - Increases ease of use
- Remove and install 10 studs in only 10-15 minutes
- Can be powered with an impact wrench, no hydraulic power source required.
- No need to remove hub from vehicle.



5237 1,000 lb. Capacity Transmission Jack

- Universal mounting head provides wide fore and aft tilt range.
 - Saddle Forward Tilt: 10°
 - Saddle Backward Tilt: 10°
 - Saddle Lateral Tilt: 10°
- Lifting range from 37" to 73-3/4".
- Two-stage hydraulic cylinder design.
- Innovative folding foot pedal and release provides precise ease of control when positioning or removing a transmission.
 - Significantly reduces force required to lift extremely heavy transmissions.
- Upgraded ergonomic handles for adjustment.
- PALD compliant.



5130 OTC 1,000 lb. Capacity DriveMaster™ Driveline Lift

- Low profile of 7".
- Lift range: 23" to 30".
- Pivoting pump handle +/- 15° tilt in each direction.
- Includes 553516 differential mounting adapter. Mounts easily using existing bolt patterns. Fits the most common differentials currently in use on Category 7 and 8 Heavy Duty Trucks. Including: Eaton, Fuller, Rockwell, Meritor, Spicer, International, and Mack.
- CE certified, PALD compliant.

Optional adapter kits

- 558382 – Auxiliary box adapter.
- 561949 – Light duty transmission adapter.

OTC Power Train Lift

- These lifts will handle engine and transmission assemblies, gas tanks, drive axle assemblies, engine/transaxle assemblies, electric bus batteries, and more.
- Scissors-type design allows access to all four sides of a component.
- Lifting and lowering motion controlled by hand-held remote.
- Table tilts ±15° side-to-side, or fore and aft.
- 20" x 32" tilt table.
- Larger casters accommodate heavy loads.



1595 – 2,500 lb. Capacity Lift. Powered by a quiet, 110V electric/hydraulic pump. Minimum height is 29" with an 80" maximum height. A 30 ft. long retractable extension cord is mounted to the frame.

5285 – 1,650 lb. Capacity Lift. Air / hydraulic operation – Foot control pump (2510A) with hose allows movement around lift. Minimum height is 29" with an 80" maximum height.

OTC Presses

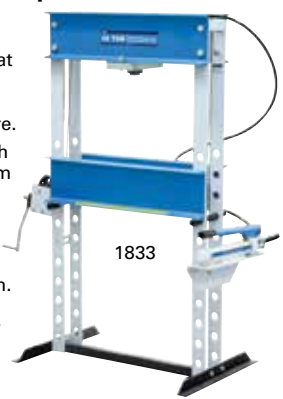
Hydraulic Bottle Jack Presses

- Bottle jacks have an overload valve built into them.
- 1823A – 12-ton press, 6-1/4" stroke with a OTC bottle Jack.
- 1824A – 20-ton press, 7-1/2" stroke with a OTC bottle Jack.



25-Ton & 55-Ton Shop Press

- Raise and lower bed easily on this tough, economical press that is ideal for pressing rear axle bearings, piston pins, and more.
- Hand-operated winch and cable mechanism adjusts lower press bolster.
- Includes OTC No. 4002 hand pump and 6-1/4" stroke ram.



1833 – 25-ton capacity press includes OTC No. 4002 hand pump and 6-1/4" stroke ram.

1850 – 55-ton capacity press includes OTC No. 4016 hand pump and 6-1/4" stroke ram.

1845 55-Ton Heavy-Duty Shop Press

- Side-to-side positioning of ram allows full capacity pressing along entire bolster length without buckling or bending.
- Covered by OTC Lifetime Marathon Warranty®.
- Hydraulic ram features 13" of stroke.
- 1845 – 55-ton press. Includes single-acting ram No. 52380 with 13" stroke; No. 4044 electric/hydraulic pump; No. 9651 gauge; No. 303563 hose (3/8" ID x 8"); and pump mounting bracket.



MUSCLETOOLS ROBINAIR A/C Diagnostics

75700 Coolant Exchanger

- Our 10 minute exchange process means no more waiting for the engine to warm up!
- Our "Engine Off" feature removes pulleys, belts, and fan blades from the safety equation.



75240 Coolant and Battery Refratometer

Coolant scale range:
32° F/0° C to -60° F/-51° C.



Econo-Clean Coolant Service Accessories

- 75134 – Coolant test strips.
- 75234 – 3-way heavy-duty truck coolant test strips.



92500 Transmission Fluid Exchanger

You can have the vehicle in and out of the service bay in less than 20 minutes!

Operate through dipstick only, cooler line or a combination of the two!

- Exchange accuracy approx. +/- 1/4 qt.
- 32-qt. supply tank; 34-qt. waste tank.



UV Leak Detection Kits

- The easiest and most accurate gun available today.
- No guesswork – a pre-measured application every time.
- One squeeze injects a pre-measure amount (1/8 oz.) of dye. No more adding too much dye.



A/C Fluorescent Dye



TIF9010A Slimline Programmable Scale

- Completely portable refrigerant scale, battery powered, can be used with all refrigerants.
- Extreme accuracy.
- 110 lb./50 kg capacity.



Robinair Vacuum Pumps

VacuMaster® Single Stage Vacuum Pumps

- 15115 – 1.5 CFM Vacuum Pump.
- 15310 – 3 CFM Vacuum Pump.
- 15510 – 5 CFM Vacuum Pump.



VacuMaster® 2-Stage Vacuum Pumps

- 15150 – 1.5 CFM Vacuum Pump.
- 15300 – 3 CFM Vacuum Pump.
- 15500 – 5 CFM Vacuum Pump.



CoolTech® Vacuum Pumps

- 15434 – 4 CFM Vacuum Pump.
- 15600 – 6 CFM Vacuum Pump.



34288



34788



34788-H



34988

Features:	34288	34788	34788-H	34988
Fully-Automatic Function: Program to recover, vacuum, leak test and charge without operating panel valves.		X	X	X
Automatic Dye Inject: Gives the user the ability to use the machine to inject UV dye into a vehicle's A/C system.				X
Automatic Oil measure & Inject: The machine will automatically determine how much lubrication oil needs to be injected back into the A/C system based on how much oil was taken out during recovery.				X
Automatic Oil Drain: A display reminds you to empty the graduated container to show the amount of oil to replace.		X	X	
Oil Inject: Less than 1% cross-contamination.		X	X	
Refrigerant & Oil Database: For North American market vehicles 1994 - 2007 (updates available mid-2008).		X	X	X
A/C system flush: Flushes a vehicle's A/C system with refrigerant eliminating any residual oil or other liquid. (Flushing adapters - not included)				X
Save & Print before and after service data: Allows the user to store before and after service information by vehicle and print this information to provide to a customer.				X
Indicator light and notification alarm: Notifies the user when service is complete, or if a problem has occurred.		X	X	X
Vacuum Leak Test: Monitors level after evacuation, informs of possible leak.	X	X	X	X
Automatic Air Purge: Eliminates damaging air without monitoring gauges or opening valves.	X	X	X	X
Automatic Refrigerant Refill: Maintains a user-selectable amount of refrigerant in an internal vessel and signals with it's time to change supply tank, no monitoring required.		X	X	X
Vacuum Feature: Defaults to 15 mins, programmable up to 99 mins. "Remaining time" is displayed.	X	X	X	X
Display: Multilingual	X	X	X	X
Refrigerant Charging: Select a charge mode from high or low side.		X	X	X
Refrigerant Management System: Displays refrigerant use and monitors remaining filter life. Prompts appear when 1/3 of filter life remains.	X	X	X	X
Capable of servicing high voltage electric compressor A/C systems			X	

Multi-Purpose and Coolant Fluorescent Dye

MULTI-PURPOSE (engine oil, transmission) 16244, 16245
COOLANT 16885, 16890



16009 DiscovR Refrigerant Identifier

- Fast and Accurate. "Pass" and "Fail" lights clearly show if refrigerant is pure enough to be recovered.

Product Specifications:

Refrigerant: R134a
Input Power: 12 VDC
Accuracy: Pass/Fail - 95% pure R134a
Air Detection: Yes
Approvals: SAE J1771, UL/C



TIFZX Heated Pentode® Refrigerant Detector

- Heated Pentode® sensor technology
- Tri-color visual leak size indicator
- Detects all CFC, HFC, HCFC's including R-12, R-22, R-123, R-134a, R-404a, R-407a, R-408a, and R-410a.



22791 InfraRed Refrigerant Leak Detector

- Advanced infrared sensor designed to last a minimum of 10 years.
- Three sensitivity levels down to 0.15 oz./year.
- Automatically recalibrates in highly contaminated areas to help pinpoint the exact location of the leak
- Won't trigger on oil or moisture.



Robinair Manifolds

2-Way Brass Manifold



44150
Dual R12/134a Kit

45111
R134a Manifold Hose Kit

2-Way Aluminum Manifold



48510 R134A
• 90° Manual couplers
• 72" R134a Hose Set (1/2" ACME x 14mm)

47150 Dual R12/134A
• 90° Manual couplers
• 72" R134a Hosea Set (1/2" ACME x 14mm)
• 72" R12 Hose Set (1/2" ACME x 1/4" MFL)

Economy Manifolds



48134A
R134 brass manifold, hose set and service couplers

49134A
R134 aluminum manifold, hose set and service couplers

Not responsible for errors in description. / 13-125 4th Quarter, Printed in U.S.A.