

MUSCLETOOLS

Electronic Diagnostics | Special Tools | Shop Equipment | A/C Tools

Q1 2014 Edition



1 DIAGNOSTIC TOOL FOR EVERY TECHNICIAN

THE SHOP TOOL



Roam the shop floor with wireless J2534 Compliant VCI, optional Scope and TPR via long-range Class 1 Bluetooth. Win 7 OS.

Go Home Early Today.

PROFESSIONAL SCAN
COMPARISON ON PAGE 2

THE FULLY INTEGRATED TECHNICIAN TOOL

ENCORE

The first integrated diagnostics tablet for Android based with fast startup and onboard battery. Merge your diagnostics work with your mobile life.

Let your smartphone do the talking, let your diagnostic tool do everything else.



THE CLASSIC SCAN TOOL



OTC's market maker, the scan tool that started it all. A fully functional Domestic, Asian and European scan tool, the OEM-level coverage premise for OTC's diagnostics line.

Instant Scanification™ with System 5.0.



Genisys Touch™ Trade Up Promotion

Expires June 30, 2014

Replace your old professional scan tool* with the Genisys Touch and choose from a OTC Tech Scope or OTC TPR Tool.

Details can be found at www.otctools.com
Participate by visiting www.boschrebates.com
*Code readers do not qualify.



3857 Tech Scope
(value \$1099)



3834T TPR
(value \$459)

Increase your functionality!
Buy a 3840F Automotive 2-channel Lab Scope
and receive the 3820-06 Amp Probe.



3840F – Automotive 2-Channel Lab Scope

- Powerful built-in reference information for each preset test include a test procedure, normal reference signal pattern, theory of operation, and trouble shooting tips.
- True RMS GMM (Graphing Multimeter) measurements & graphs.
- Real-time comparison between actual waveforms and reference waveforms on the same screen for component testing.

3820-06 – Amp Probe

- Non-Intrusive current measurement
- Good for evaluating
 - Fuel Pumps
 - Ignition
 - Injectors
 - Electric Motors
 - Relays
 - Parasitic Losses



To redeem for your free product, visit www.boschrebates.com

Expires June 30, 2014

Bosch Tech 2 \$700 Rebate

The only authentic General Motors Tech 2 scan tool with full, dealer-level diagnostics. Includes preloaded software that doesn't expire.

Visit boschrebates.com

F00E900977

Tech 2 Pro Optima

Expires March 31, 2014



\$200 or \$325 REBATE On GENISYS EVO®



PURCHASE A QUALIFYING GENISYS EVO AND RECEIVE A GIFT CARD

GENISYS EVO MODEL	GIFT CARD VALUE
3874, 3874HD,	
3874TPR, 3874MVCI	\$325
3875	\$200

HOW TO PARTICIPATE

1. REGISTER ON
WWW.BOSCHREBATES.COM
2. PROVIDE A VALID
SERIAL NUMBER

Expires March 31, 2014.

Bosch brings authentic OEM diagnostics to aftermarket again with Ford VCM II

F00E9016307HH



The Ford Vehicle Communication Module II (VCM II)

- Authentic OEM diagnostics for Ford, Lincoln and Mercury Vehicles.
- Customer Flight Recorder (CFR) functionality with an optional pendant cable.
- Four LED indicators and signaling device providing technician with continuous visual as well as audible operating status.
- Enhanced 802.11 wireless that minimizes dependencies on service department wireless capability infrastructure.

F00E9016297HH*

Includes VCM II, VCM to Laptop cable, USB wireless cards, and DLC cable.

F00E9016307HH*

Includes all contents of F00E9016297HH plus F00K108698 CFR kit.

*Software license sold separately.



Purchase a new Robinair A/C Cart
(34288, 34788, 34788H or 34988)
from your local distributor and receive
a free A/C Leak Detector Kit (16235)



Visit www.robinair.com to redeem and see complete program details. Valid March 1 – September 30, 2014.



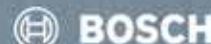
Made in USA Tools Promotion

Receive a OTC 7168 Jimmy Bar
with the purchase of an
OTC 7249 ball joint kit.
Made with Pride in
Owatonna, MN.

- 7249** – Includes 5 adapters, C-Frame and storage case.
- 7168** – Chrome alloy steel and heat treated to resist bending and breaking. 7/8" diameter, 30" long.



Valid February 1 – April 30, 2014.
The 7168 Jimmy Bar will ship with the 7249 order.



PROFESSIONAL SCAN
COMPARISON

Scan Functionality	Genisys EVO 3874TPR	Encore 3893	Genisys Touch 3895
OEM Domestic/Asian/European Bidirectional Controls	•	•	•
OEM Domestic/Asian/European OBD II Enhanced	•	•	•
OEM Domestic/Asian/European OBD I	•	•	•
All 10 Modes of OBD II	•	•	•
Heavy Duty Standard Coverage	Option	Option	Option
Multiple Language Support	•	•	•
Internet Upgradeable	PC Required	•	•
J2534 All Makes Reprogramming			•
Vehicle Diagnostic Software Information			
Scan and Scope Troubleshooting Repair Information	•	•	•
Repair-Trac & Code-Assist DTC VIN Specific Tech Tips	•	•	•
Symptom-Assist Specific Tech Tips		•	•
Identifix Direc based Info		•	•
AutoDetect™		•	•
AutoID™		•	•
Embedded Training Videos		•	•
Hardware			
Battery Power	•	•	•
WiFi Wireless		•	•
Bluetooth Long Range Wireless	TPR Tool Wireless	•	•
Headphone Jack		•	•
High Resolution Touch Screen Display		7" Capacitive	10" Resistive
VGA Video Out	•		•
Stereo Speakers			•
Wireless to the car VCI			•
Diagnostic Accessories			
High Speed Scope	Option		Option
Bluetooth Wireless TPMS Sensor Reprogramming	Option		Option
5-Gas Analyzer	Option		
Software			
Operating System	Lynx	Android	Windows 7
Internet Browser		•	•



3893
OTC Encore Deluxe Kit
The Encore is OTC 's first integrated scan tool for Android, capitalizing on the operating system's speed, ease of use and functionality.

3893 kit includes: Encore, OBD II cable, USB cable, Power adapter, and hard carrying case.



3076
OTC HD Scan with Ez-Tap

- In-shop wireless capability.
- Ez-Tap Wireless Vehicle Communication Interface (VCI) works with OEM diagnostic software.
- One wireless VCI for all your diagnostic software.
- Eliminate cables and cable replacement costs.

Essential Product. New Configuration. Impressive Price!
The Bosch Mastertech VCI is now available in a more cost effective configuration that offers validated flashing that meets both SAE J2534 and ISO 22900 industry standards. It also is capable of OEM level diagnostics so it is like having multiple OEM tools in one!

Bosch Mastertech VCI provides

- Validated J2534 Flashing
- Authentic OEM Dealer Level Diagnostics
- Optional Aftermarket Diagnostic Software
- Enhanced High Speed Ford Cylinder Contribution Test (M-VCI is required to run the application)

F00E901631 – Bosch Mastertech VCI, hardware kit - Includes the base Mastertech VCI, DLC cable, WIFI wireless dongle, AC power supply, USB cable and carrying case. Software not included.

F00E901632 – The Bosch Mastertech VCI Aftermarket Diagnostic Software - Includes the final release of Shop Foremen Pro and ESI 2.0. The 2013 final release software is a one time purchase license (no future updates).

CP9599
U-Scan
Get the answers to the cause of the check engine light. Simply plug in the adapter in your vehicle and read the code definitions for the codes that caused the check engine light to illuminate with an Android or Apple smartphone.

Made for
iPod iPhone

Works with all cars and light trucks
1996 and newer (OBD II & CAN)

3834T
OTC TPR Activation Tool
The OTC's TPR is a fast and simple to use stand alone TPMS activation tool!

- Lower cost kit for use with the Genisys Touch scan tool or as a stand alone tool.
- Works on vehicle TPMS sensors through 2013.
- Bright graphic display and simple navigation buttons enable vehicle selection for fast activation.
- Automatically adjusts activation output power to eliminate cross activation of near sensors.
- Tool includes a 6 month update subscription from www.tpmsupdates.com



3857
OTC Tech-Scope
The "Tech-Scope" is a 2-channel high speed lab and ignition oscilloscope. It has a millimeter function that can be used as a stand alone device or in conjunction with PC scan. Use it anywhere an oscilloscope or multimeter is needed for fast and accurate automotive diagnostics. This scope is for the technician who wants an all-purpose scope to accurately test all electrical and electronic components on a vehicle. The unique features of this scope strongly compliment the PC scan diagnostic tools.

OTC-700A
OTC 70 AMP Power Supply Battery Charger

- A power supply for Flash Reprogramming is a device that connects to the vehicle's battery and outputs a designated supply of clean DC power.
- Constant voltage output selectable from 13.0 to 14.8V DC
- Output current up to 70 amps
- Fully automatic operation for 12V batteries
- Digital volts and amps display



3829
OTC J2534 Reprogramming Tool

- J2534-1 and J2534-2 Pass through module
- Standard and custom OEM protocols and pin-selections
- Wireless with advanced networking functions
- Does both emission and non-emission related reprogramming

Includes: Vehicle Communication Interface, power supply adapter kit, OBD II cable, power supply cable, USB cable, J2534 training CD, quick start guide, one-year warranty.



3829-700A
OTC Midrange VCI / Power Supply
The 3829-700A offers both a wireless VCI and Power Supply adjustable voltage (13.0 – 14.8V). The VCI does both emission and non emission reprogramming. The power Supply has adjustable voltage (13.0 – 14.8V) settings with automated output amperage up to 70A. This allows the OTC unit to adapt to more OEM applications. The OTC Power Supply also doubles as a fully automatic battery charger for recharging standard, AGM, deep cycle and gel type batteries.



3880X
OTC Automotive Inspection Camera

- Large 3.5" inch high resolution color screen for optimal viewing.
- Detachable 36" camera snake with position hold shaft.
- Images and video are recorded on the included SD card and can be viewed on the camera display or transferred to a computer.

OTC Leak Tamer 30-Day Satisfaction Guarantee
It's a straight forward guarantee. Buy it, try it for 30 days, if you don't find that it helps you get your job done you can return it to your participating authorized dealer and get your money back.



6522
OTC EVAP – Leak Detection System

- Pinpoint leaks with Smoke and dye
 - UltraTraceUV® dye deposits at exact location of a leak
 - Finds leaks that smoke alone won't find
 - It's the only OEM-Approved dye solution
- Compact light weight design
 - More powerful diagnostics in smaller package



FOOE900291
Bosch SMT 300 – Smoke Machine Tester
The Bosch SMT 300 Smoke Machine Tester is a full featured device which allows today's shop to perform various types of vehicle leak testing. The compact design and full complement of accessories makes this an ideal fit for any repair shop needing a workhorse of a smoke tester. It has built in safety features for EVAP testing. Suitable for leak testing of any closed system found on today's vehicles.



3415
OTC CAN Test Box
Breakout Box for Scan Tools

- Connects between Diagnostic Link Connector (DLC).
- Connect leads for increased diagnosis, analysis, and monitoring.

Useful Functions

- LEDs display signal detection
 - Flashing LEDs indicate ECU activity.
- Magnifies DLC
 - Allows monitoring of OBD II data lines.
- Monitors voltage
 - Displays battery voltage.
 - Alarm warning when voltage drops below 11.6v or rises above 15v.



3940-HD
OTC DMM Kit for HD Truck
Professional grade multimeter kit for heavy duty truck repair

OTC 550 Series Auto Ranging Multimeter
Powerful professional grade test functions:

- Frequency
- Duty Cycle
- Diode & Continuity Tests

Mid-Range Amp Probe
Non-intrusive AC/DC current measurement
Measurement range of 2–600 amps AC/DC

- Covers HD truck components and electric motors

Extended Length Test Leads
5 ft. test leads to provide improved reach
Detachable probes allow use with amp probe

Genisys EVO® Software



3421-146 OTC Genisys 2013 Super Bundle Productivity Kit

This powerful kit maximizes technician productivity with the four most popular Genisys options at a value price — USA 2013 Domestic/Asian with ABS, European 2012 with Code-Assist™ and Repair-Trac® experienced-based Confirmed Fixes™ from Identifix®. Also included, the System 5.0 software with a pre-loaded high speed commercial grade 4 GB memory card for fast installation.

NOTE: This kit is required for Genisys tools with System 3.0 or older software.



3421-147 OTC Genisys 2013 Software Loyalty Kit

This powerful kit recognizes loyal Genisys customers that have System 4.0 or newer software. This kit includes most vehicle coverage ever released at a value price — USA 2013 Domestic/Asian with ABS, European 2012 with Code-Assist™ and Repair-Trac® experienced-based Confirmed Fixes™ from Identifix®.

NOTE: System 4.0 or newer 4GB memory card required for 2013 Software installation minimum. New software application authorization is only obtained by purchasing the appropriate software kits.



3421-148 OTC Genisys 2013 System 5.0 4GB Memory Expansion Kit

The memory card is pre-loaded with 2013 Genisys application software for your convenience. New applications not already authorized require a separate purchase. Kit includes System 5.0 Software and a pre-loaded high speed commercial grade 4GB memory card for fast installation.

Nemisys Software



3774-37 OTC Nemisys 2013 Domestic/Asian software

New OEM based 2013 Domestic and Asian coverage back to 1983 for engine, body, and chassis systems. Includes the Code-Assist™ Library of experienced-based Confirmed Fixes™ from Identifix® and Data / Sensor Info repair information. This valuable software bundle also includes the Memory Card, Security Cards, Quick Start Guide, and the ScanMate Lite Windows-based PC software CD for downloading updates.

Genisys Touch HD



3895-07 OTC Genisys Touch Heavy-Duty Standard

OTC Genisys Touch HD supports two Society of Automotive Engineers (SAE) standards for the heavy-duty industry, J1587 / J1708 and J1930 CAN. Features Class 4 – Class 8 truck coverage, View and clear diagnostic trouble codes and live vehicle data.

3895-07 – Heavy-Duty Standard Stater Kit. Includes 9-pin Deutsch cable, 6-pin Deutsch cable, and heavy-duty security card.

Hybrid Multimeter

F00E900101 Bosch MMD 540H Hybrid Multimeter

The Bosch MMD 540H Hybrid Multimeter is a CAT safety rated, auto ranging digital multimeter designed for use in diagnostics of electronic circuits. Whatever your shop services: automotive, fleet, motorcycle, marine or small engine, the MMD 540H has the capability to keep up with your business.

- CAT III (1000v) safety rating for hybrid vehicle circuits.
- Peak, Min/Max readings as fast as 1 millisecond.
- Higher amperage test ranges, up to 20 Amps.
- Inductive RPM clamp for conventional and DIS ignition systems.
- Fused diagnostic test leads for safe trouble shooting (up to 20 amps) at the circuit fuse location.
- K-Type thermocouple for quick temperature measurement.
- Large LCD display with bright back lighting and auto shutdown.



3111PRO OTC Trilingual Scan Tool OBD II, CAN, ABS & Airbag

Fix it Faster! Expanded Domestic and Asian ABS & Airbag coverage. Now with over 4.3 million verified fixes at the touch of a button! Compatible with all 1996 and newer cars and light trucks.

Airbag (SRS) & ABS coverage:
1996-2010 GM, Ford and Chrysler
1996-2009 Toyota, Honda, Hyundai and Nissan.

Enhanced code request For GM, Ford, Chrysler, Honda, Hyundai, Nissan and Toyota vehicles.

Displays additional live engine data: Now over 300+ possible PIDs. View engine RPMs, coolant temperature, Oxygen sensor readings and more!

AutoID™ Automatically retrieves VIN from vehicle and decodes to Year/Make/Model.

Component Locator Text descriptions indicate where the vehicle component is located.

3108N

OTC Pocketscan® Code Reader

- View LIVE engine data.
- Automatically reads DTC's.
- Erases DTCs.
- Reads and displays MIL status.
- Reads and displays I/M monitors.



3109N

OTC Trilingual OBD II/EOBD and CAN Scan Tool

- AutoID™ - Automatically selects the vehicle so you don't have to on most 2000 and newer vehicles.
- Graph live data.
- Read and erase diagnostic trouble codes.
- Read and display LIVE sensor data.
- Read and display freeze frame data.



Battery



3167 OTC Battery and Electrical System Diagnostic Tester

- Digital circuitry precisely controls battery test loads to accurately determine battery conditions.
- Tests both flooded lead acid and AGM/gel cell batteries accurately—down to 1 volt state of charge.
- Tests vehicle starting and charging systems with minimal user interaction.
- Tests all 6- & 12-volt batteries with a 50-2000 CCA operating range.
- Scales: CCA, CA, AHR, MCA, JIS, DIN.
- Removable/ auto-sensing 3' leads.

3183

OTC Digital Battery Tester

Speed. Accuracy. Reliability. These are the cornerstones behind the technology in our digital battery testers. No. 3183 tests 12-volt batteries (125-1400 CCAs)and analyzes by measuring multiple parameters within the battery to deliver accurate results. A live voltmeter allows easy starting/charging system testing. Its bright, 4-digit LED display indicates the battery's good/bad status, voltage, and available CCAs. It even compensates for cold temperatures.



0684400732

Bosch BAT 131 – Battery & Starting/Charging System Tester

The BAT 131 is the benchmark in battery testing, and is designed for testing all types of 6V and 12V starter batteries, including lead-acid, gel and fleece batteries/ AGM. The rugged, exterior housing is specially designed to survive the harshest workshop conditions and molded perfectly for one-handed operation.

The load free test procedure provides fast, precise and reliable measurement results between 100 and 2000 CCA. In addition to CCA, the BAT 131 can also measure and display to CA, MCA, DIN, SAE, EN, IEC and JIS standards.



4847

Twin Cam Inner Cam Bearing Remover/Installer Kit

- This kit contains the tools to remove & install inner cam bearings without damage to the crankcase.
- The bearing puller is designed to trap the needle bearings and keep them from falling into the crankcase.
- The installation tools are designed to press on the outer most diameter of the bearing, eliminating damage to the bearing, cam, or case. The press adapter will also set the bearing to its proper depth.
- Similar to HD-42325-B.



4970

Heavy Duty Flywheel Puller

- Extremely heavy duty puller to pull the most stubborn flywheels. Includes 2 drive screws and bolts; 8mm x 1.25 x 60mm (3X), 6mm x 1.0 x 55mm (6X), 6mm x 1.0 x 50mm (6X).
- The 6 bolt capable design fits Polaris ATV, Snowmobile, Watercraft and many other makes and models.
- Similar to Polaris No. 2871043-A.



4974

Clutch Puller

- Removes drive clutches on Polaris Side x Side and Snowmobile.
- Snow Applications: 700/800 XCR Fuji 3 cylinder engines 1999-2001, all Domestic twin 2 -strokes model year 2000 and newer, FS/FST models 2006 and newer.
- Side x Side Applications: Ranger RZR XP 2011 and newer.
- 3/4-16 thread.
- Similar to Polaris 2872085.



4965

ATV Steering Knuckle/Ball Joint Separator

- Eliminates damaging the A-Arm, ball joint stud, or rubber boot while separating the ball joint from the knuckle body. Includes 2 drive bolts for Applications include ATV models Honda TRX and Yamaha YZF, YFZ, and YFM.



4860

Transmission and Steering Bearing Puller/Installer Kit

- This combination kit works on transmission main-shaft and steering stem bearings on HD motorcycles.
- Removes; Fork stem bearings on most applications. Flywheel bearing 00-03 XL. Removes/Installs; Inner bearing race on trans main-shaft Big twin 84 & later.
- Aftermarket trans main-shaft bearings & bushings on 5 & 6 spd. LSD and RSD trans.



4888

Flywheel Socket Set

The best flywheel sockets available. These offer a low profile design that provides full nut to socket contact to eliminate rounding off the nut and slippage. Made from heat-treated chrome moly steel. Set includes:

4888-1 – Socket fits pinion shaft nut on big twin 81-89. Size 1-1/4" with 1/2" square drive.

4888-2 – Socket fits crank pin nut on big twins 54 – early 81. Size 1-5/16" with 1/2" square drive.

4888-3 – Socket fits crank pin nut on Sportster 81-99 and Buell 87-99. Can also be used on top fork nut on glide forks. Size 1-3/8" with 1/2" square drive.

4888-4 – Socket fits crank pin nut on big twin 83-99 single cam. Size 1-1/2" with 1/2" square drive.

4888-5 – Socket fits sprocket shaft nuts on big twins 72-99 single cam. Size 1-5/8" with 3/4" square drive.



4972

Drive Clutch Holding Fixture

- For solid holding of drive clutch for spider removal when shimming for belt-to-sheave clearance or servicing spider.
- Bolt to bench or clamp in a vise.
- Contacts all webs for maximum support to eliminate clutch web damage.
- Center hold down for much greater holding stability while applying off center torque.
- Single person operation, even on the most difficult spiders.
- ATV and Ranger applications.
- Similar to Polaris No. 2871358-B.



4892

Steering Head Bearing Installer

- Designed to install steering head bearing cups and races completely straight without any damage.
- Will work on stock and custom applications.
- Similar to HD-39302.



4862

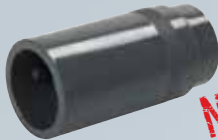
5 Speed Main Drive Gear Tool

- This tool set will remove and install the transmission main drive gear and install the main bearing without removing the transmission. Designed to not damage the bearing or gear during installation.
- Applications include 5 speed Big Twin and aftermarket 6 speed 1980-2006 (ex 06 Dyna and Sportster 91-05).

4989

Clutch Spider Tool

- Essential when servicing or re-building Polaris clutch. Fit's P85 and P90 clutches found on Polaris ATV, Side x Side, and snowmobiles 1972 to Present.
- Similar to Polaris No. 2870341.



4988

Clutch Spider Nut Driver

- Essential when servicing or re-building Polaris clutch. Fit's P85 and P90 clutches found on Polaris ATVs and snowmobiles 1972 to Present. (except 900 RZR XP 4x4 11-12, 900 RZR XP 4 4x4 12).
- Similar to Polaris No. 2870338.

NEW

OTC Lubrication Service



2300
Professional Lever Grease Gun

- Heavy duty die cast aluminum grease gun head.
- Grease gun head fitted with automatic air bleeder.
- Large diameter piston for working in cold.
- Built-in variable stroke for greasing fittings with limited access.
- Includes 6" bent steel extension, easy access 24" high pressure grease hose and 3 jaw slim coupler.
- 10,000 PSI.
- For use with 14 oz. grease cartridge.



2302
Mini Lever Grease Gun

- Die cast aluminum grease gun head.
- Lever action with best in class performance, delivers 6000 PSI.
- Includes bent 6" steel extension with 3 jaw slim coupler.
- For use with 3 oz. grease cartridge.




2310
Air Operated Grease Gun-Continuous Flow

- Heavy duty die cast aluminum grease gun head.
- Grease gun head fitted with automatic air bleeder.
- Larger pumping chamber, honed for rapid operation.
- Includes 6" bent steel extension, easy access 24" high pressure grease hose and 3 jaw slim coupler.
- 4800 PSI.
- For use with 14 oz. grease cartridge.



2332
Quick Connect Greasing Accessory Kit

- 7 piece Quick Connect Greasing Accessory Kit
- Includes 1 each of the following quick connect Accessories:
 - Recessed lube adapter.
 - Angle lube adapter.
 - Narrow needle nose adapter.
 - Seal off dispenser.
 - Right angled grease coupler.
 - Heavy duty hose fitted with spring guard and slim coupler.
 - Grease injector needle 1.42" long x 18G.



2340
Heavy Duty Grease Gun Holder

- Great grease gun storage accessory.
- Can be mounted to walls, machinery, or heavy equipment.
- Design to retain your grease gun in high vibration environments.
- Works with all standard 14 oz. grease guns and 16 oz. suction guns.




2352
Lever Action Bucket Pump

- Fits 5 gallon pails.
- Includes 12" drum cover.
- 3 position handle for different fluid viscosity.
- Steel discharge spout.
- Supplied with 5' hose.
- Up to 4.6 oz. / stroke.
- For use with transmission differentials and heavier oils.



2304
Professional Pistol Grease Gun

- Heavy duty die cast aluminum grease gun head with integrated die cast fixed handle.
- Grease gun head fitted with automatic air bleeder.
- Large diameter piston for working in cold.
- Built-in variable stroke for greasing fittings with limited access.
- Includes 4" straight steel extension, easy access 24" high pressure grease hose and 3 jaw slim coupler.
- 7500 PSI.
- For use with 14 oz. grease cartridge.



2334
Grease Fitting Unblocker

- Opens clogged grease fittings and loosens hardened grease joints.
- Comes with grease coupler.
- Includes flexible hose to reach difficult areas.
- Built in hand guard for safe usage.
- Includes two spare piston seals.



2350
Lever Action Drum Pump

- Fits 15 – 55 gallon drums.
- Telescoping suction tube.
- 3 Position Handle for different fluid viscosity.
- Extra tall pump cylinder allows smaller bucket to be placed under spout.
- Brass piston rings for extended wear resistance.
- Threaded outlet spout for use with common hoses.
- Up to 14 oz. / stroke.
- For use with oil based fluids, heating oils, motor oils, heavy and light oils, diesel and kerosene.

SmartTech™ Gloves

OTC SmartTech™ Technician Gloves

- Works with touchscreen technology.
- Washable synthetic leather palm with padding ensures comfort and a secure grip.
- Polyester and Lycra material around fingers offer a durable lightweight cover that stretches for a great fit.
- PVC cushions help protect knuckles from injury due to slippage.
- Comfortable polyester back panels include webbing for improved ventilation.

5801SGLV-M – Medium.


5801SGLV-L – Large.

5801SGLV-XL – Extra large.



6618
OTC Universal Bearing Race Puller

- Rugged puller built for many races, sleeves and bearings between 40mm and 60mm.
- Jaws designed with sharp edges for secure grip - even where vertical clearance is negligible.
- Jaws have radius for better attachment to round parts.
- Firm grip based on the adjustable clamping chain.
- Puller design avoids tilting.



7175
OTC 3-Piece Indexing Pry Bar Set

- Sizes 10", 12" and 15".
- Indexable to 180° for better access.
- 14 locking positions for leverage in multiple applications.
- Knurled handle assures a sure grip.
- Meets or exceeds ANSI specifications for pry bars.

7172 – 10" Indexing Pry Bar

7173 – 12" Indexing Pry Bar

7174 – 15" Indexing Pry Bar

OTC Drain Plug Pro™



5911
OTC Drain Plug Pro™

- Remove oil drain plug without dropping or touching the plug or hot oil.

OTC Heavy-Duty Drain Plug Pro™

- For Agricultural, Commercial, and Heavy- Duty Vehicle Applications.

OTC Drain Plug PRO Kit

- Standard drain plug attachment.
- Low profile drain plug attachment.
- 17mm hex attachment for internally driven drain plugs.
- 5/16" bit driver attachment.

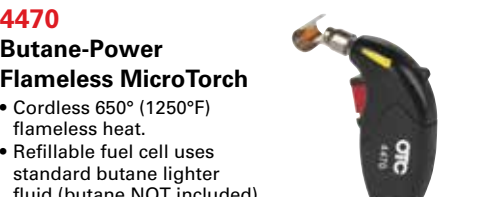
Ford 6.0L Service Tools



6770
Ford 6.0L Diesel Service Tool Kit

- 8 of our popular 6.0L Diesel Service Tools in one convenient kit.
- Properly test vehicle systems for leaks and blockage.
- Safely remove and re-install harnesses without damage.
- Fuel Filter Cap Wrench, Glow Plug and Injector Harness Release Tools.
- Oil Line Disconnect Tool, EGR Removal Tool.
- IPR Controller, IPR Socket Tool and Fuel Rail Pressure Adapters.

OTC Wire Service Tools



4470
Butane-Power Flameless MicroTorch


- Cordless 650° (1250°F) flameless heat.
- Refillable fuel cell uses standard butane lighter fluid (butane NOT included).



4472
Cordless Solder Tool Kit

Includes: Soldering iron, conical tip 2.4 mm, chisel tip 2.4 mm, hot knife tip, deflector tip, sponge,wrench, and soldering wire.

4472-1 – Soldering iron only.



4460
2-Piece Electrical Connector Separator Tool



4461
Terminal Release Tool Set



1/4" & 3/8"
Cable Cutters

- 4476 – 1/4" cable cutter.
- 4477 – 3/8" cable cutter.



4467
Automatic Wire Stripper

- Comes with adjustable depth gauge (8mm to 12mm).




4468
9" Self Adjusting Wire Stripper

- Strips insulating sheathing from wires ranging from 10 ga. to 22 ga.



5912
Crimpwell™ Angled Crimping Pliers

- Universal crimping design accommodates soft wire – solid or stranded – 10-22 AWG.
- Cutting feature included for quicker preparation.
- 9" (228mm) in length, with protective grips to increase leverage and secure crimp.



5950A
CrimPro™ 4-in-1 Angled Wire Tool

- Compact 7-inch design.
- Gripping nose.
- Crimper, 12-20 AWG insulated & non-insulated wire.
- Stripper – strips 12-20 AWG wire.
- Cutter – ability to make cuts both above and below pivot.



5950S
CrimPro™ 4-in-1 Wire Tool

- Compact 7-inch design.
- Gripping nose.
- Crimper, 12-20 AWG insulated & non-insulated wire.
- Stripper – strips 12-20 AWG wire.
- Cutter – ability to make cuts both above and below pivot.



5947
Butt Connector Kit (240 Piece)

Two styles - insulated and non-insulated. Three sizes of each style: 12-10 AWG, 16-14 AWG and 22-18 AWG.



4813
Heat Shrink Tubing Set (171 Piece)

Protection and insulation for solder connections and components. 2 to 1 shrink ratio with flame or heat gun.



4814
Waterproof Heat Shrink Tubing Set (106 Piece)

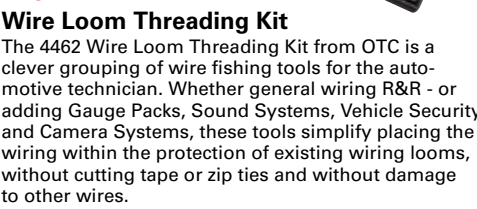
Waterproof protection and insulation on solder connections and components. Adhesive lined inner wall to seal out moisture. 3 to 1 shrink ratio with flame or heat gun.



4462
Wire Loom Threading Kit

The 4462 Wire Loom Threading Kit from OTC is a clever grouping of wire fishing tools for the automotive technician. Whether general wiring R&R - or adding Gauge Packs, Sound Systems, Vehicle Security and Camera Systems, these tools simplify placing the wiring within the protection of existing wiring looms, without cutting tape or zip ties and without damage to other wires.

There are 3 wire pulling tools in 15", 10" and 5.5" lengths for common automotive applications, the grommet insertion tool allows the wire to be captured within the tool to hold once it is placed, placed so you can grab from the opposite side of the firewall - and the pigtail tool assists when building a new harness on the workbench.



4676PN
Windshield Wiper Puller and Nozzle Needle Combo

- The puller removes wiper arms on many foreign and domestic cars and light trucks.
- Will not damage wiper arm or hood cowl during removal.
- Simply place puller feet under wiper arm and tighten forcing screw against wiper shaft.
- The Nozzle Needle makes quick work of clearing obstructions from the windshield washer spray nozzle.
- Easily pierces corrosion or remove blockage.
- The barrel is knurled for grip and control.
- Threaded end caps keep the needle points covered when not in use.

ENGINE / DRIVETRAIN TOOLS



6918
Ford Spark Plug Remover Kit, Triton 3V

- Unique design helps prevent breakage by locking the plug porcelain core to the plug hex allowing it to turn as one complete unit.
- Will also pull plug porcelain core if plug hex only is removed.
- Detailed Instructions to maximize success rate.

Works on:
Ford 4.6L 3V V8 engines used in 2005–2008 Mustang, 2006–2008 Explorer.
Ford 5.4L 3V V8 engines used in 2004–2008 F-Series, 2005–2008 Expedition, 2005–2008 Lincoln Navigator.
Ford 6.8L 3V V10 engines used in 2005–2008 F-Series 250-350-450.

6684
Ford 3V Valve Spring Compressor

- Designed to compress valve springs on a Ford 3V 4.6L & 5.4L.
- Similar to OE p/n 303-1039.

6675
Timing Belt Adjuster Wrench

- Designed to fit the adjuster on Chevy Aveo, 2002 - 2011.
- Similar to J-42492-A.

7217
Axle Nut Socket

- Designed to fit the axle nut on Chevy Topkick/Kodiak, 2003 - Newer.
- Similar to J-44275.

6694
Axle Seal Installer

- Designed to install the axle seal on GM Trucks with 10-1/2" ring gear.
- Similar to J-24428-A.

6754
Diesel Fuel Pressure Gauge

- Designed to test fuel pressure on GM Duramax diesel engines.
- Similar to J-44638.

6749
GM Engine Barring Socket

- Designed to rotate engine on a Mack E7 and Cat 3208.
- Similar to J-38587-A.

6579
Transmission Disconnect (2 pack)

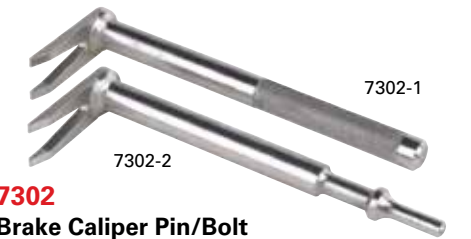
- Designed to disconnect transmission lines on Ford Taurus/Explorer 2005 and newer.
- Similar to OE p/n 307-569.



GM Duramax Injector Pullers

- Designed to pull injectors on a GM Duramax 6.6L engines.

6778 From 2001 - 2004, Similar to J-44639.
6779 From 2005 - 2011, Similar to J-46594.



7302
Brake Caliper Pin/Bolt Remover Set

- Allows for removal of inboard facing pins or bolts to be removed from the outboard side of the brake caliper or vehicle component.
- For caliper pin removal, simply back the pin bolt out half way and place the tool over the bolt shank to strike against the bolt head.
- Fits all sizes of pins or bolt shanks ranging from 1/4" (6mm) to 5/8" (16mm).
- Set includes 7302-1, a striking version and 7302-2, air hammer adapter. Also sold separately.

OTC Tire Service

5729
Inside Dual Wheel Bead Breaker

- Breaks the inner bead on the outside tire without removing the wheel from the truck.
- Unique design places pressure in the exact location required to quickly and easily break the inner bead.
- Simply pull up on the handle and the bead is forced off the wheel rim.



5700A
Accessory Tire Bead Seater

- Provides the ability to control the blast with both hands firmly on the nozzle assembly, increasing effectiveness and safety.
- Includes all the fittings to adapt the hose to most surge tanks found on tire changers. A tank hook is also included to hang the nozzle when not in use.
- Long 6-1/2' hose will reach all positions on the tire.

5747
Tire Valve Stem Punch Kit

- Quickly and easily remove old valve stems from a wheel with a swing of a hammer.
- Simply place the punch tip on the inside of the valve stem and strike the punch to force the old valve stem out of the wheel.
- The unique punch tip is heat treated and shaped to remove all types of valve stems.
- Includes hand protecting handle with interchangeable 5" and 8" punch adapters for car and truck wheel applications.

Tire Service Hammers, Indestructible Handle

- Drop-forged head is induction-hardened for long life, and contains steel locking plates that are specially bonded to ensure the head never becomes loose.
 - Use top hook as a wheel tipper; sledge end hook to drag tire into position.
 - Bead breaking wedge has grooves and a convex shape to help drive tire lube into the bead.

5789ID-520 – Head Weight 5 lb., Handle Length 20".
5789ID-1032 – Head Weight 10 lb., Handle Length 32".

Handle never needs replacement "Lifetime Warranty".

	Tire Spoons Unique "Convex Slip Head" curved design allows the spoon to slide easily into the tire bead while the spoon bump limits the depth for quick-and-easy operation.
5716 HD Sliding Tire Spoon 38" extends to 52", 3/4" diameter	
5720 Sliding Dual Tire Spoon 35" and 3/4" diameter.	
5724 Extending Tire Spoon 22" extends to 34", 3/4" diameter.	
5735-35 35" Curved/Flat Tip Curved Tire Spoon, 3/4" diameter	

Tire Spoons

5735-42
42" Double End Tire Spoon, 3/4" diameter

- Same great design as the original double end mount/demount tire spoon, but in a 42" length for added leverage.

5735-42K
42" Kick Start Double End Tire Spoon, 3/4" diameter

- The -42K includes kick loops to allow the spoon to be forced into tight bead locations with the help of foot pressure.



5731
Tire Bead Locking Pliers

- Prevents the tire from slipping while mounting the top bead.
- Prevents tire from contacting costly TPM Sensors.



5733
Tire Wheel Wedge Pliers

- Tire Bead Wedge Pliers keeps the tire in the bead drop area to ease mounting and demounting of larger truck and agricultural tires.



5732
Tire Spoon Holding Pliers

- Tire Spoon Holding Pliers is the 3rd hand needed to ease mounting and demounting of tires with tire spoons.



5758
Hub Cap Removal Tool

- Unique slide hammer design eliminates prying against the wheel finish and potential scratches.
- Opposite end has a rubber bumper used to re-install cap with a simple tab.



OTC Oil Filter Pliers

4582
Jointed Jaw Standard Filter Pliers

- Jointed jaws rotate 180 degrees providing access where standard pliers do not.
- Slip joint handle design provides a range from 2-1/4" to 4-3/4".
- Jaw teeth and cushioned handles provide maximum gripping power for slip free operation.



4584
Jointed Jaw Large Filter Pliers

- Jointed jaws rotate 180 degrees providing access where standard pliers do not.
- Slip joint handle design provides a range from 3-1/8" to 7-1/2".
- Jaw teeth and cushioned handles provide maximum gripping power for slip free operation.



OTC No.	Head Weight	Handle Length
Double Face Sledge Hammer, Indestructible Handle		
5790ID-624	6 lb.	24"
5790ID-630	6 lb.	30"
5790ID-824	8 lb.	24"
5790ID-830	8 lb.	30"
5790ID-1030	10 lb.	30"
5790ID-1230	12 lb.	30"
5790ID-1430	14 lb.	30"

Club/Hand Drill Hammer, Indestructible Handle		
5791ID-312	2.5 lb.	12"
5791ID-412	4 lb.	12"
5791ID-416	4 lb.	16"

Cross Peen Hammer, Indestructible Handle		
5792ID-216	2 lb.	16"
5792ID-316	3 lb.	16"

Ball Peen Hammer, Indestructible Handle		
5793ID-2414	24 oz.	14"
5793ID-3214	32 oz.	14"



6720
Flare Nut Locking Plier Set (3 pcs.)

- Designed for use on new or damaged flare nuts that have been rounded or rusty.
- Fits Standard or Metric nuts and bolts.
- Angled jaws allow for clearance around frames and bulkheads.

6720-1 – Covers 1/4" to 5/16" (6mm to 8mm)
6720-2 – Covers 3/8" to 7/16" (9mm to 11mm)
6720-3 – Covers 1/2" to 5/8" (12mm to 16mm)



6720-4 – Covers sizes 11/16" to 7/8" (17mm to 22mm). NOT included in 6720 set. Fits nut sizes found on power steering and AC lines.



6722
Brake Spring Locking Plier

- Designed to compress parking brake springs and hold them in a compressed position while servicing the brake cable or other brake components.
- Ford and Dodge applications.



7832
GM Torsion Bar Unloader

- Required to safely release the tension on the front suspension torsion bar to service the front suspension.
- Larger design to cover the newer GM truck applications.
- Application: 2011 & newer HD C/K trucks.

1694100246
Bosch WBE 4430
Premium Monitor
Display Wheel Balancer
F00E900663



LED light ring
illuminates the
work area



Bosch Wheel Balancers
Superior Accuracy + Superior Value

Designed for:

- Shop Type: General service
- Usage: Frequent with full tire size coverage

Product Summary:

- 3D automatic data entry
- Monitor display wheel balancer
- Laser for precise weight placement
- LED light ring illuminates the work area where you need it most
- Easy and intuitive operation with visual monitor display program
- Weight location intuition eliminates menu selections and saves time
- Superior Bosch balancing program accuracy to balance it right the first time every time!
- Fast 6 second cycle time
- Auto-locking arm puts tape weights in the correct location every time
- Extended 40mm shaft for larger wheel coverage
- Positioning pedal for fast and simple operation
- Great value with included high performance mounting accessories

OCL 8850
Bosch Brake Lathes
Faster. Better. Stronger.



This revolutionary brake lathe is designed with supreme accuracy to make operation quicker and safer. Featuring a compact design to fit in tight wheel wells, the OCL quickly resurfaces rotors without having to disassemble or remove many components. In some cases only the caliper is removed. Compared to hub-mounted on car lathes, Bosch's caliper-mounted unit doesn't require compensation for runout. The Bosch unit efficiently corrects lateral runout, DTV (disc thickness variation) and produces a superior finish versus competitive models.

Features and Benefits:

- Standard adapters for 95% vehicle coverage in standard package
- Two-speed settings for initial and finish cuts
- Bidirectional drive unit, eliminating the need to "flip" the lathe
- Design saves time, eliminates need for full disassembly of brake system
- Compact design fits in tight wheel wells
- Mounts to the same machined surface as caliper



571939
We have combined
the TCE 4225 and
the Helper Assembly
for Huge Savings!



Helper Assembly

TCE 4225

- Classic swing arm design.
- Outside clamping capacity up to 20".
- Advanced mount/demount head with tire iron slot assist with low-profile tires.
- 3 position bead-breaker arm accommodates large wheels and tires.

Helper Assembly

- Following arm applies additional pressure while mounting difficult tires.
- Lower disc effortlessly lifts bottom bead during dismounting.



TCE 4225

**While
Supplies
Last**

OTC Equipment



5300
OTC Stinger 3-Ton Jack Pack
• This jack pack provides a 3-ton service jack (5303) with lifting range of 5-11/16" to 18-1/2" and a pair of 3-ton jack stands (5372) with a base o 8-1/4" x 7-1/2" and height range of 12" to 17-11/16".

2-1/4 - / 3-Ton Hydraulic Service Jacks

- Light, compact design makes them easy and convenient to use.
- Built-in safety overload system/ prevents use beyond their rated capacity.
- Rear swivel casters, for easy maneuvering and positioning.
- These jacks have 5" saddle dia., 21" overall reach, 6-1/4" frame height, 37-1/2" handle length, and a floor space of 14" x 26".

5302 – 2-1/4-ton capacity with a lifting range of 5" to 17-15/16".

5303 – 3-ton capacity with a lifting range of 5-11/16" to 18-1/2".



1780
OTC Stinger 22-Ton Capacity Jack Stands
• Height range is 13-7/8" to 19-7/8".
• Saddle size 3" x 3-3/4".
• Pin-style (non-ratchet) three positions, 3" intervals.
• Reinforced collar to meet newest ANSI PALD test standards.
• 11" flat base prevents sinking into the surface.



OTC Stinger 3-Ton & 6-Ton Jack Stands
• Formed and welded steel base for strength; self-locking ratchet handle cannot be released under load. Durable baked enamel finish resists corrosion.
• Stands conform to ANSI PALD load rating standard; factory tested before shipment.

5372
• Pair of 3-ton jack stands.
• Base: 8-1/4" x 7-1/2".
• Height range: 12" to 17-11/16".

5373
• Pair of 6-ton jack stands.
• Base: 11-1/2" x 10-1/4".
• Height range: 15-9/16" to 23-3/4".

1784D
• Pair of 12-ton jack stands.
• Base: 12-1/16" x 10-7/8".
• Height range: 17-1/2" to 27-1/2".



1577
OTC Stinger Low Profile Fluid Receiver
• Fluid capacity: 7.5 gallons.
• Constructed of polyethylene plastic for heavy-duty use—yet, only weighs 13 pounds.
• Low profile, only 5" high, it easily slides under passenger cars.
• Suitable for cooling system repair jobs—can be used for antifreeze.
• Includes splash screen to prevent spillage and splashing.

5286
OTC Portable Diesel Particulate Filter Cleaner

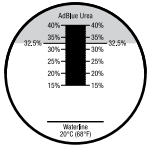
- The advent of the 2010 Tier 4 cleaning requirements created the need for a lighter, more portable cleaning system which can be taken into the field to clean filters at the point of service.
- Lightweight and Highly Portable - ideal cleaning system for use in the shop or on a service truck.
- Flexibility - clean DPF's from 6" to 15.5" in diameter using shop or compressed air of at least 100 PSI.
- Fully Automated Operation - once started, the cleaning process can be completed unmonitored, freeing up technician to simultaneously do other work in the shop.
- Focused Air Jet Technology™ - concentrates a precise high pressure stream of air directly into every cell.
- Maximum Efficiency - OTC's unique floating puck prevents "splash back," which maximizes the volume of air entering each cell.
- Easy Maintenance - contains no internal filters that require user maintenance and its rugged design provides maximum durability.



5025
OTC DEF Refractometer
SCR & EPA 2010
EPA regulations require all diesel engines manufactured on or after January 1, 2010 to meet lowered NOx emissions standards.

Scale:
0.5% line graduations
32.5% Indicated
Scale 15-40%
Waterline & 20 Deg C

Application:
The refractometer is a portable, precision, optical instrument used for measuring the Diesel Exhaust Fluid (DEF) concentration. When a liquid sample is placed on the prism, the light passing through it is bent. and shows on the scale to indicate the DEF condition.



OTC 9300 Stinger Series Bottle Jacks give you lifting range from 2 to 50 tons.
With a forged base and cylinder to ensure strength and eliminate leaks, you can lift it all. Featuring a chrome piston pump and ram for additional rust resistance.

9302 – 2-Ton	9312 – 12-Ton	9330 – 30-Ton
9303 – 3-Ton	9314 – 8-Ton Shorty	9350 – 50-Ton
9305 – 5-Ton	9320 – 20-Ton	
9308 – 8-Ton	9322 – 20-Ton Shorty	

3095
Heavy-Duty Digital DEF Tester
Ensure the proper operation of Class 7-8 trucks utilizing the SCR system with accurate Diesel Exhaust Fluid solution displayed on screen.

- Digital Display
- Displays % UREA
- Displays washer fluid freeze point

The OTC 3095 makes testing a simple and quick process for an operator or technician.



5281
OTC DPF Thermal Proce ssing Unit
• Designed to facilitate the cleaning of filters – with high amounts of wet soot, and unburned hydrocarbons.
• Pre-programmed thermal profile controls temperature 'ramp up' and 'cool down' to reduce the risk of cracking the DPF.
• Includes "pre-treat" cycle for oil-soaked filters.
• Holds temperature constant for two hours to ensure complete regeneration of filter.
• Built-in electronic safety lock prevents unauthorized opening of the door when temperatures exceed 200 degrees F.
• Large chamber accommodates various DPF sizes and shapes. Front access door allows for easy access to the thermal chamber.



2510A
OTC Stinger Air/Hydraulic Pump
• 10,000 PSI air/hydraulic pump.
• Internal relief valve.
• Two-stage release mechanism.
• Pump, hold, or release load with pedal control.
• 98 cu. in. usable capacity.
• 3/8 NPT oil port.



OTC Heavy Duty

5105B

1,100 lb. Capacity High-Lift Dual Wheel Dolly

- Effortless air-powered hydraulic lift system for a variety of applications.
- 0 to 42" lifting range.
- Six-inch lateral adjustment.
- Tilt adjustment of +15° to -8° ensures easy alignment.
- Features four swivel casters, two locking, for enhanced mobility.



AVAILABLE MARCH

5018A

Truck Clutch and Flywheel Handler

- Replaces 14" & 15-1/2" clutch assemblies weighing up to 250 lbs.
- 13" low point enables access below side faring.
- Linkage raises load from horizontal to vertical position.
- 360 degree swivel head.



1590

10-Ton Air Lift

- Adjustable lifting saddles and an extra wide stance for extra stability.
- 10 tons of lift at 200 PSI air pressure.
- Lifting range is 13" to 52".
- Automatic mechanical safety catch engages in five height positions.



1788A

OTC Stinger 22-Ton Capacity Under-Axle Jack

- Long 49-1/2" T-handle lets you easily position jack under vehicles with long overhangs.
- One pull of the handle activates the self-retracting 22-ton capacity ram without having to crawl underneath the vehicle.
- Jack has large rubber-tired wheels.
- Cylinder stroke, 4-1/2"; extended screw length, 4-1/4"; PSI range, 90-145.
- Lifting range:
 - 3/4" saddle Max. height 17-3/4"
 - 1-15/16" saddle Max. height 18-15/16"
 - 3-7/8" saddle Max. height 20-5/8"



1591A

10-Ton Capacity Combination Air Lift and Support Stand

- Air lift can also be used as a support stand when servicing a vehicle.
- Height range of 16-1/8" to 49-1/4".
- Removable handle and 8' air hose.
- Covered by Lifetime Marathon Warranty®.



20-Ton Truck Ramps

- Long, retractable T-handle enhances mobility.
- Non-skid rubber matting prevents slippage during use.
- Durable, heavy-duty rubber wheels.
- Capacity per pair is 20 tons
- Covered by OTC Lifetime Marathon Warranty®.



5268

20-ton truck ramps handle up to 10" tread width.

5269

Wide 20-ton truck ramps handle up to 16" tread width.

5097

OTC Transfer Tanker

- Draining oil from a large displacement engine and getting it to your bulk storage container is a snap.
- Used oil is collected in the 15-gallon reservoir, and then rolls smoothly on 4" free-wheeling casters to your storage location.
- Pump moves five gallons a minute through the 8-foot transfer hose.
- Low profile, measures 7-1/2" from floor to top of reservoir.
- Can also be used for transferring antifreeze.



5077

Transfer Tanker equipped with an electric pump (No. 528093).

5097

Transfer Tanker equipped with a pneumatic pump (No. 529966).

OTC Service Jacks

5200

Ultra-Low Profile 2-Ton Service Jack

- Minimum saddle height of just 1-7/8".
- Unique, fifth-wheel design provides effortless 360°maneuverability – literally spins on a dime!
- Featuring Polyamide casters – superior to cast wheels due to their high mechanical strength and thermal properties.
- Foot pedal for quick approach of saddle to lifting point.
- Lifting range of 1-7/8" to 20-1/2".
- CE certified, PALD compliant.



5202

2- & 3-Ton Service Jack

- Ergonomic handle for user comfort & easy mobility.
- Foot pedal for quick approach of the lifting saddle to load. Built-in tray for fasteners and tools.
- CE certified, PALD compliant.
- Covered by OTC Lifetime Marathon Warranty®.



5202

2-ton service jack. Min. height 3"; Max. height 18-1/4".

5203

3-ton service jack. Min. height 5-1/2"; Max. height 20-1/2".

5206

6- & 10-Ton Heavy-Duty Service Jack

- Ergonomic handle for user comfort & easy mobility.
- Foot pedal for quick approach of the lifting saddle to load. Built-in tray for fasteners and tools.
- CE certified, PALD compliant.
- Covered by OTC Lifetime Marathon Warranty®.



5206

6-ton HD service jack. Min. height 6-11/16"; Max. height 22-13/16".

5210

10-ton HD service jack. Min. height 6-11/16"; Max. height 23-13/16".

1533

OTC Aluminum Racing Jack Pack

- Jack lifts two tons and weighs only 43 lbs.
- Low profile 3-1/2" makes it perfect for ground hugging, high performance cars.
- 10-1/4" min. height, 15-1/4" max. height.
- Removable, rubber saddle pad protects vehicle and prevents slipping.



1735B

OTC 2,000 lb. Capacity Heavy-Duty Motor-Rotor® Repair Stand

- Handles a wide variety of engines, transmissions, torque converters, and rear axles from trucks, tractors, and construction machinery.
- The 50:1 ratio gearbox allows full rotation of mounted unit with just a turn of the crank and locks in position. Easily maneuvered when loaded.
- To ensure engine stability in all positions, this repair stand is equipped with a positive-crank handle locking mechanism.
- Twin-post design, featuring laterally adjustable, 3 position outboard support; provides an extremely stable work-holding unit.
- Locking rear wheels anchor stand in position.



206391

6.0L and 6.4L Ford engine adapters. (Works with both the OTC 1735, 1735A and 1735B.)






4244

Freightliner Rear Suspension Tool

- Removes FAS II Airliner Freightliner Rear Suspension bushings, Neway AD Series Truck and Tractor suspension bushings. in a fraction of the time of traditional methods.
- Saves on average 45 minutes per bushing (4 per vehicle) on flat rate of 1.5 hours per bushing.



4295

Wheel Stud Service Kit

- Installation done by pushing on the head, eliminating the need for threaded adapters.
 - Reduces number of adapters required
 - Reduces damage to studs, hubs and bearings
 - Increases ease of use
- Remove and install 10 studs in only 10-15 minutes
- Can be powered with an impact wrench, no hydraulic power source required.
- No need to remove hub from vehicle.



5237

1,000 lb. Capacity Transmission Jack

- Universal mounting head provides wide fore and aft tilt range.
 - Saddle Forward Tilt: 10°
 - Saddle Backward Tilt: 10°
 - Saddle Lateral Tilt: 10°
- Lifting range from 37" to 73-3/4".
- Two-stage hydraulic cylinder design.
- Innovative folding foot pedal and release provides precise ease of control when positioning or removing a transmission.
 - Significantly reduces force required to lift extremely heavy transmissions.
- Upgraded ergonomic handles for adjustment.
- PALD compliant.



5130

OTC 1,000 lb. Capacity DriveMaster™ Driveline Lift

- Low profile of 7".
- Lift range: 23" to 30".
- Pivoting pump handle +/- 15° tilt in each direction.
- Includes 553516 differential mounting adapter. Mounts easily using existing bolt patterns. Fits the most common differentials currently in use on Category 7 and 8 Heavy Duty Trucks. Including: Eaton, Fuller, Rockwell, Meritor, Spicer, International, and Mack.
- CE certified, PALD compliant.



558382

Auxiliary box adapter.

561949

Light duty transmission adapter.

1595

2,500 lb. Capacity Lift


- These lifts will handle engine and transmission assemblies, gas tanks, drive axle assemblies, engine/transaxle assemblies, electric bus batteries, and more.
- Scissors-type design allows access to all four sides of a component.
- Lifting and lowering motion controlled by hand-held remote.
- Table tilts ±15° side-to-side, or fore and aft.
- 20" x 32" tilt table.
- Larger casters accommodate heavy loads.



5285

1,650 lb. Capacity Lift

- Air / hydraulic operation – Foot control pump (2510A) with hose allows movement around lift.
- Minimum height is 29" with an 80" maximum height.
- A 30 ft. long retractable extension cord is mounted to the frame.



OTC Presses

1823A

Hydraulic Bottle Jack Presses

- Bottle jacks have an overload valve built into them.

1823A

12-ton press, 6-1/4" stroke with a OTC bottle Jack.

1824A

20-ton press, 7-1/2" stroke with a OTC bottle Jack.

1833

25-Ton & 55-Ton Shop Press

- Raise and lower bed easily on this tough, economical press that is ideal for pressing rear axle bearings, piston pins, and more.
- Hand-operated winch and cable mechanism adjusts lower press bolster.
- Includes OTC No. 4002 hand pump and 6-1/4" stroke ram.



1833

25-ton capacity press includes OTC No. 4002 hand pump and 6-1/4" stroke ram.

1850

55-ton capacity press includes OTC No. 4016 hand pump and 6-1/4" stroke ram.

1845

55-Ton Heavy-Duty Shop Press

- Side-to-side positioning of ram allows full capacity pressing along entire bolster length without buckling or bending.
- Covered by OTC Lifetime Marathon Warranty®.
- Hydraulic ram features 13" of stroke.



1845

55-ton press. Includes single-acting ram No. 52380 with 13" stroke; No. 4044 electric/hydraulic pump; No. 9651 gauge; No. 303563 hose (3/8" ID x 8');and pump mounting bracket.

MUSCLETOOLS

ROBINAIR A/C Diagnostics

75700

Coolant Exchanger

- Our 10 minute exchange process means no more waiting for the engine to warm up!
- Our “Engine Off” feature removes pulleys, belts, and fan blades from the safety equation.



75240

Coolant and Battery Refraterometer

Coolant scale range:
32° F/0° C to -60° F/ -51° C.



Econo-Clean Coolant Service Accessories

75134 – Coolant test strips.

75234 – 3-way heavy-duty truck coolant test strips.



92500

Transmission Fluid Exchanger

You can have the vehicle in and out of the service bay in less than 20 minutes!

Operate through dipstick only, cooler line or a combination of the two!

- Exchange accuracy approx. +/- 1/4 qt.
- 32-qt. supply tank; 34-qt. waste tank.



UV Leak Detection Kits

- The easiest and most accurate gun available today.
- No guesswork – a pre-measured application every time.
- One squeeze injects a pre-measure amount (1/8 oz.) of dye. No more adding too much dye.



A/C Fluorescent Dye



16240
64 applications
One 8 oz. bottle



16241
64 applications
One 8 oz. bottle



16242
12 applications
Twelve 1/4 oz. bottles



16243
24 applications
Six 1 oz. bottles

TIF9010A

Slimline Programmable Scale

- Completely portable refrigerant scale, battery powered, can be used with all refrigerants.
- Extreme accuracy.
- 110 lb./50 kg capacity.



Robinair Vacuum Pumps

VacuMaster® Single Stage Vacuum Pumps

15115 – 1.5 CFM Vacuum Pump.

15310 – 3 CFM Vacuum Pump.

15510 – 5 CFM Vacuum Pump.



VacuMaster® 2-Stage Vacuum Pumps

15150 – 1.5 CFM Vacuum Pump.

15300 – 3 CFM Vacuum Pump.

15500 – 5 CFM Vacuum Pump.



CoolTech® Vacuum Pumps

15434 – 4 CFM Vacuum Pump.

15600 – 6 CFM Vacuum Pump.



34288



34788



34788-H



34988

Features:	34288	34788	34788-H	34988
Fully-Automatic Function: Program to recover, vacuum, leak test and charge without operating panel valves.		X	X	X
Automatic Dye Inject: Gives the user the ability to use the machine to inject UV dye into a vehicle's A/C system.				X
Automatic Oil measure & Inject: The machine will automatically determine how much lubrication oil needs to be injected back into the A/C system based on how much oil was taken out during recovery.				X
Automatic Oil Drain: A display reminds you to empty the graduated container to show the amount of oil to replace.		X	X	
Oil Inject: Less than 1% cross-contamination.		X	X	
Refrigerant & Oil Database: For North American market vehicles 1994 - 2007 (updates available mid-2008).		X	X	X
A/C system flush: Flushes a vehicle's A/C system with refrigerant eliminating any residual oil or other liquid. (Flushing adapters - not included)				X
Save & Print before and after service data: Allows the user to store before and after service information by vehicle and print this information to provide to a customer.				X
Indicator light and notification alarm: Notifies the user when service is complete, or if a problem has occurred.		X	X	X
Vacuum Leak Test: Monitors level after evacuation, informs of possible leak.	X	X	X	X
Automatic Air Purge: Eliminates damaging air without monitoring gauges or opening valves.	X	X	X	X
Automatic Refrigerant Refill: Maintains a user-selectable amount of refrigerant in an internal vessel and signals with it's time to change supply tank, no monitoring required.		X	X	X
Vacuum Feature: Defaults to 15 mins, programmable up to 99 mins. "Remaining time" is displayed.	X	X	X	X
Display: Multilingual	X	X	X	X
Refrigerant Charging: Select a charge mode from high or low side.		X	X	X
Refrigerant Management System: Displays refrigerant use and monitors remaining filter life. Prompts appear when 1/3 of filter life remains.	X	X	X	X
Capable of servicing high voltage electric compressor A/C systems			X	

Multi-Purpose and Coolant Fluorescent Dye

MULTI-PURPOSE (engine oil, transmission) 16244, 16245

COOLANT 16885, 16890



16244
6 applications



16885
6 applications



16890
32 applications



16245
32 applications

16009

DiscovR Refrigerant Identifier

- Fast and Accurate. “Pass” and “Fail” lights clearly show if refrigerant is pure enough to be recovered.

Product Specifications:

Refrigerant: R134a
Input Power: 12 VDC
Accuracy: Pass/Fail - 95% pure R134a
Air Detection: Yes
Approvals: SAE J1771, UL/C



TIFZX

Heated Pentode® Refrigerant Detector

- Heated Pentode® sensor technology
- Tri-color visual leak size indicator
- Detects all CFC, HFC, HCFC's including R-12, R-22, R-123, R-134a, R-404a, R-407a, R-408a, and R-410a.



22791

InfraRed Refrigerant Leak Detector

- Advanced infrared sensor designed to last a minimum of 10 years.
- Three sensitivity levels down to 0.15 oz./year.
- Automatically recalibrates in highly contaminated areas to help pinpoint the exact location of the leak
- Won't trigger on oil or moisture.



Robinair Manifolds

2-Way Brass Manifold



44150
Dual R12/134a Kit



45111
R134a Manifold Hose Kit

2-Way Aluminum Manifold



48510 R134A
• 90° Manual couplers
• 72" R134a Hose Set (1/2" ACME x 14mm)



47150 Dual R12/134A
• 90° Manual couplers
• 72" R134a Hosea Set (1/2" ACME x 14mm)
• 72" R12 Hose Set (1/2" ACME x 1/4" MFL)

Economy Manifolds



48134A
R134 brass manifold, hose set and service couplers



49134A
R134 aluminum manifold, hose set and service couplers