

# MUSCLE TOOLS



Electronic Diagnostics | Special Tools | Shop Equipment | A/C Tools

Q1 2016 Edition

Want to see your car on the cover of Muscle Tools this year?  
Send us a photo and information at [otctools.com/musclecar](http://otctools.com/musclecar)

**Featured in this issue:**

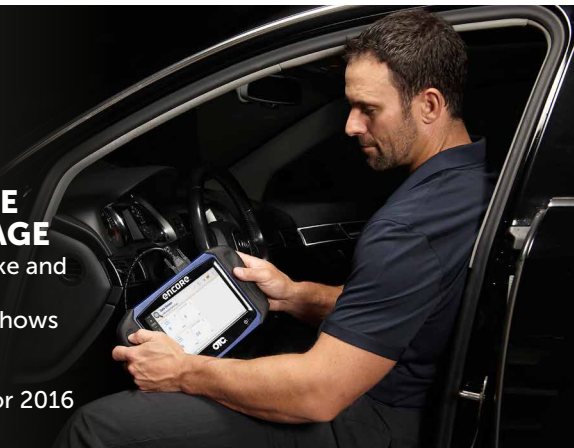
- Field Trainer Mike Schoenbeck's 1966 Ford Fairlane
- Mike's favorite road to drive it on: Wisconsin rustic road systems
- Mike's favorite memory with the car: Participating in a leg of the Hot Rod Power Tour
- The song Mike is listening to when he drives it: My exhaust, or anything heavy metal. Usually my exhaust.
- Repairs/services performed on the car: Edelbrock intake upgrades, Ignition system upgrades, fuel system upgrades, suspension / steering and brake service.



## ENCORE

### NEW TESTS AND UNBEATABLE LIGHT-DUTY DIESEL COVERAGE

- Industry-leading Duramax, Powerstroke and Cummins coverage
- New Ford power balance test clearly shows cylinder output power
- Expanded 16-PID data stream
- Updated Identifix repair information for 2016



## PROMOTIONS

[OTCTOOLS.COM/PROMOTIONS](http://OTCTOOLS.COM/PROMOTIONS)

### \$200 REBATE ON GENISYS TOUCH\*

VALID JAN. 1 – JUNE 30, 2016



#### 3895 GENISYS TOUCH DELUXE KIT

#### THE LATEST UPDATES INCLUDE

- 2015 USA Domestic / Asian / European vehicle coverage with multiple releases through the year.
- Frequent updates to the largest experienced based solutions available, already with more than 30 million specific fixes.
- Performance improvements, user interface, repair information and product enhancements included.
- Battery Disconnect Procedures, Key fob and Remote Reprogramming.

#### GENISYS TOUCH REBATE

Receive a \$200 rebate when you purchase a Genisys Touch between January 1 through June 30, 2016.

#### HOW TO PARTICIPATE/REDEEM

Visit [boschrebates.com](http://boschrebates.com)

\*Terms and conditions apply

### DIAGNOSTICS FOR YOUR FRIENDS \$100 FOR YOU\*

VALID OCT. 1 – JUNE 30, 2016



- ✓ LIFETIME WARRANTY\*
- ✓ FASTEST TO FIX
- ✓ EXPANDED COVERAGE

\*Terms and conditions apply



#### REFER ENCORE TO A FRIEND AND RECEIVE \$100

To say thank you for being an Encore owner, we're offering you \$100 for every friend you refer to us who purchases an Encore.

#### HOW TO GET STARTED

1. Tell your friend to go to [otctools.com/refer-a-friend](http://otctools.com/refer-a-friend)
2. Register at [bosch-rebates.com/refer-a-friend](http://bosch-rebates.com/refer-a-friend) with your Encore serial number
3. Enter your friend's contact info and, once purchased, new Encore serial number
4. Once we confirm the sale and referral, we'll send you \$100. Allow 4 – 6 weeks for delivery

There is no limit to the number of friends you can refer!

### SMART BATTERY TESTER

VALID JAN. 1 – JUNE 30, 2016

RECEIVE A 3112 BATTERY RESET TOOL WITH PURCHASE OF AN OTC 3200\*



#### OTC 3200 SMART BATTERY TESTER

Check battery voltage and CCA in less than 10 seconds. Test starting and charging systems in less than a minute.

#### HOW TO PARTICIPATE/REDEEM

Visit [boschrebates.com](http://boschrebates.com)

\*Terms and conditions apply

### A NEW SPOON PACK WITH A FREE SPOON RACK

#### WEDGE 'EM, PRY 'EM & NOW HANG 'EM FOR FREE

#### 5735-PACK

An upgraded pack of popular tire spoons features the 35" Double End Tire Spoon with Grip Grooves (5735-35G), 35" Curved/Flat Tip Curved Tire Spoon (5735-35) and 30" Curved Tire Spoon (5736-30), along with a **FREE** rack (5715) that can be hung on a toolbox or wall for easy organization.



✓ FREE HANG RACK INCLUDED

\*Tool chest not included

### REPLACE YOUR EXISTING TIRE PRESSURE MONITORING SYSTEM TOOL

VALID JAN. 1 – JUNE 30, 2016

WITH THE OTC3838 AND RECEIVE A \$100 REBATE\*



#### TPMS TOOL WITH BLUETOOTH OBD II

The OTC 3838 is both a sensor activation and diagnostic device that features a wireless OBD II module for TPMS sensor registration. The tool works with all OEM and aftermarket sensors.

#### HOW TO PARTICIPATE/REDEEM

Visit [boschrebates.com](http://boschrebates.com)

\*Terms and conditions apply

### 4 PIECE ROLLING HEAD PRY BAR SET

INCLUDES A FREE PAIR OF OTC SMARTTECH WORK GLOVES (L)

#### 4 PC ROLLING HEAD PRY BAR SET FROM OTC

#### 7176

Includes 6", 12", 16" and 21" lengths for a variety of duties - small - large and in between. Heated to cherry red, upset, then forged and swaged processing creates the tool, then our special thermal treating process locks in the strength you count on. Won't bend or break.





## Fastest code-to-fix® with a lifetime warranty

### New Bravo 2.0 software is faster and more responsive

The OTC Encore features enhanced diagnostic coverage and a lifetime hardware warranty. The mobile, Android-based system is easy to use, intuitive and fast.

#### No tool helps you fix faster than OTC Encore

- Re-engineered Bravo 2.0 software is faster, more responsive.
- First OTC tool with Bosch coverage database for European vehicles, including Mercedes-Benz, BMW and Volvo
- AutoID most CAN vehicles in less than 5 seconds
- Read and clear codes in seconds
- Access top reported code fixes in seconds
- Extended-hours tech service days, nights and Saturdays. Call 888-789-2602.

#### 30 Years of Unmatched OE Coverage

Encore alerts technicians to on-tool or web-based repair information including Identifix® Direct-Hit™. Full scan functionality, including OEM Domestic, Asian and European, bi-directional controls and enhanced data Perform a Google search right within a diagnostic session.

#### 3893

Encore, OBD II cable, USB cable, power adapter, and hard carrying case.

#### 3893-LTW

Encore 1-Year Subscription & Lifetime Hardware Warranty Encore Domestic, Asian and European Software 1-year subscription kit provides a year of frequent and valuable updates for new coverage, coverage enhancements, repair information, application improvements and includes the Diagnostics for Life® lifetime hardware warranty.

Diagnosics for Life® lifetime hardware warranty means OTC supports your Encore for as long as you own it, as long as you update it.

The "hardware warranty" applies to the Encore scan tool tablet only. Accessories, such as cables, adapters, batteries and case remain the 90 Day factory warranty from purchase.



Check out the Encore TPMS sensor registration process here.



3893



3893-LTW

#### 3895

### Genisys Touch

- Includes a ruggedized 10" high resolution display tablet, J2534-1 / -2 compliant Vehicle Communications Interface (VCI), 10 OEM adapters, OBD II cable, USB cable, 12V power cable, AC power supply and custom carrying case.
- AutoDetect™ Genisys Touch software automatically detects and alerts the technician of on-tool or web-based repair information.
- Embedded Training Videos.
- Videos within live diagnostic sessions don't interrupt workflow connectivity.
- Partner up with the included OTC J2534 Communication Device. Or pair up with the optional.
- PC-based 2-Channel Tech-Scope® or TPR Tool via long-range Class 1 Bluetooth®.
- Shorten your diagnostic time, maximize billable labor hours and get the repair done from Code-to-Fix®.



## Your one-stop shop for OEM tools



F00E9016307HH

### The Ford Vehicle Communication Module II (VCM II)

- Authentic OEM diagnostics for Ford, Lincoln and Mercury Vehicles.
- Customer Flight Recorder (CFR) functionality with an optional pendant cable.
- Four LED indicators and signaling device providing technician with continuous visual as well as audible operating status.
- Enhanced 802.11 wireless that minimizes dependencies on service department wireless capability infrastructure.

#### F00E9016297HH\*

Includes VCM II, VCM to Laptop cable, USB wireless cards, and DLC cable.

#### F00E9016307HH\*

Includes all contents of F00E9016297HH plus CFR kit.

\*Software license sold separately.

Ford and VCM II are used under license from Ford Motor Company.

#### F00E9009777HH

### Tech 2 Pro Optima

The only authentic General Motors Tech 2 scan tool with full, dealer-level diagnostics. Includes preloaded software that doesn't expire.



#### F00E901631

### Bosch Mastertech VCI

Validated J2534 Flashing – covers GM, Ford, Chrysler, Honda, Nissan, Mazda, Mitsubishi, Saab, BMW, and more to come. M-VCI is an OEM approved reprogramming device.

Authentic OEM Dealer Level Diagnostics\* – compatible with BMW ISTA, Saab GDS 2, GM Tech2Win, GM GDS 2, and more to come.

F00E901632 Bosch Mastertech VCI Aftermarket Diagnostic Software – Includes the final release of Shop Foremen Pro and ESI 2.0.

\* OEM dealer diagnostic software is purchased separately from vehicle OEM websites.

## OTC Leak Tamer 30-Day Satisfaction Guarantee

It's a straight-forward guarantee. Try it for 30 days and if you're not completely satisfied, return it to your participating authorized dealer for a full refund.

#### 6522

### OTC EVAP – Leak Detection System

- Pinpoint leaks with Smoke and dye
  - UltraTraceUV® dye deposits at exact location of a leak
  - Finds leaks that smoke alone won't find
  - It's the only OEM-Approved dye solution
- Compact light weight design
  - More powerful diagnostics in smaller package



## Coming Q1 2016 13,000 confirmed HD diagnostic fixes

New ESI[repair] subscription service with 13,000 trouble code fixes.

Free trial for current tool owners. Confirmed fixes based on module, code and truck configuration.

Visit [boschdiagnostics.com/pro](http://boschdiagnostics.com/pro) to learn more.

## ESI[Truck] HD Diagnostics

### UNMATCHED COVERAGE AND REPAIR INFORMATION AT THE TRUCK

The most complete diagnostic coverage for multibrand heavy-duty trucks and engines, performing special tests and parameter reset capabilities.

### NEW REPAIR INFORMATION SUBSCRIPTION SERVICE

NEW

ESI[repair] subscription service for ESI[truck] includes 13,000 experienced based fixes. The tool includes fixes specific to trouble codes and symptoms with repair information viewed while still in diagnostic mode.

### TRUCK COVERAGE

Trucks: Freightliner, International, Kenworth, Mack, Volvo, Peterbilt, Sterling, Westernstar, MD Trucks (Freightliner Sprinter Van, Isuzu, GM and Ford). Trailer ABS Controllers; Allison & Eaton Transmissions.

### ENGINE COVERAGE

Heavy-duty engines – Caterpillar, Cummins, Detroit Diesel-MBE, Deutz, Mack, MTU, Navistar, PACCAR, Perkins and Volvo. Medium and light duty engine software included.

#### 3824

### WINDOWS 7 TABLET SCANTOOL

Includes VCI, 6 pin and 9 pin cables

#### 3824BSC

### SCAN KIT

- Use with your shop PC
- Includes Bosch diagnostic software, VCI, 6 and 9 pin cables.

#### 3824-06

### Bosch ESI[truck] Trailer Adapter

- 7-pin PLC adapter for trailer ABS diagnostics
- J2497 Power Line Carrier (PLC) communication compatible
- Allows direct connection to trailer
- Works with tractor present or without the tractor present
  - External power supply is necessary without tractor
- Bosch ESI[truck] trailer ABS coverage for Bendix, Haldex, Meritor Wabco and Wabash systems

#### 3824-08

### Bosch ESI[truck] License Renewal 12-Month Security Card



3824



3824-06



3824-08



Watch the tool used at a local shop.

## Test battery voltage and CCA in less than 10 seconds

Quickly test charging and starting system health without disconnecting leads

- Download the OTC3200 app from the Google Play or iTunes store. View battery test data by scanning the device QR code\*. Instructions included on testing device.
- All light duty applications - test 6V, 8V and 12V lead acid and AGM batteries
- Diagnose bad batteries faster – an internal 9V battery allows testing for deeply discharged batteries
- Share your test results – print, save or email a customer friendly color report
- Confidently recommend repairs – use your smart phone or tablet camera to embed photos into customer reports
- Sync feature sends information to all phones used in your shop so every tech can access reports by vehicle.

\*Smart devices paired with the tester must have auto-focusing rear-facing camera to meet full requirements



3200

Watch the tool used at a local shop on a 2000 Celica here:



#### 3167

### Battery & Electrical System Diagnostic Tester

- Digital circuitry precisely controls battery test loads to accurately determine battery conditions.
- Tests both flooded lead acid and AGM/gell cell batteries accurately—down to 1 volt state of charge.
- Tests vehicle starting and charging systems with minimal user interaction.
- Tests all 6- & 12-volt batteries with a 50-2000 CCA operating range.
- Scales: CCA, CA, AHR, MCA, JIS, DIN.
- Removable/auto-sensing leads. (3' leads included in kits, optional 10' leads available.)
- Optional amp clamps for current drain tests and starting/charging measurements.
- Includes SABRE HP, 3' test leads, side-post terminal adapters, instruction manual, and molded-plastic carrying case.

#### 3183

### OTC Digital Battery Tester

Speed. Accuracy. Reliability. These are the cornerstones behind the technology in our digital battery testers. Test 12-volt batteries (125–1400 CCAs) and analyze by measuring multiple parameters within the battery to deliver accurate results. A live voltmeter allows easy starting/charging system testing. Its bright, 4-digit LED display indicates battery status, voltage, and available CCAs. It even compensates for cold temperatures.



#### 4639

### Battery Terminal Service Kit

This kit includes seven favorite battery tools, housed in a rugged, vinyl-coated fabric pouch. Kit includes: a heavy-duty battery terminal puller, 4-way battery post cleaner and reamer, angled battery nut pliers, GM 5/16" battery terminal ratchet wrench, extra long 5/16" terminal ratchet wrench, 10 mm battery terminal ratchet wrench, and side terminal battery brush.



### Genisys EVO® New 2014 Software

3421-149

#### 2014 Super Bundle Kit

- Everything needed to update a Genisys EVO
- Includes 2014 Domestic/Asian, 2013 European, and preloaded System 5.0 memory card



3421-150

#### 2014 Software Loyalty Kit

- Designed for customers who already have System 4.0 and newer.
- Includes 2014 Domestic/Asian and 2013 European



3421-151

#### 2014 System 5.0 4GB Memory Expansion Kit

- Pre-loaded with 2014 application software
- New applications require a separate purchase



### Nemisys 2014 Software

3774-38

#### OTC Nemisys 2014 Domestic/Asian software

OEM based 2014 Domestic and Asian coverage back to 1983 for engine, body, and chassis systems. Includes the Code-Assist™ Library of experienced-based Confirmed Fixes™ from Identifix® and Data / Sensor Info repair information.



### Encore/Genisys Touch HD



3895-07

#### OTC Heavy-Duty Standard

- Class 4 - 8 Heavy Duty Standard truck Coverage
- Read / erase codes and view live engine data

3895-08

#### OTC Genisys Touch 12 Month Software Subscription

Genisys Touch Domestic, Asian and European Software 12 month subscription kit provides a year of frequent and valuable updates for new coverage, coverage enhancements, repair information and application improvements.



3834T

#### OTC TPR Activation Tool

The OTC's TPR is a fast and simple to use stand alone TPMS activation tool!

- Lower cost kit for use with the Genisys Touch scan tool or as a stand alone tool.
- Works on vehicle TPMS sensors through 2013.
- Bright graphic display and simple navigation buttons enable vehicle selection for fast activation.
- Automatically adjusts activation output power to eliminate cross activation of near sensors.
- Tool includes a 6 month update subscription from .tpmsupdates.com



3415

#### OTC CAN Test Box Breakout Box for Scan Tools

- Connects between Diagnostic Link Connector (DLC).
- Connect leads for increased diagnosis, analysis, and monitoring.

#### Useful Functions

- LEDs display signal detection
  - Flashing LEDs indicate ECU activity.
- Magnifies DLC
  - Allows monitoring of OBD II data lines.
- Monitors voltage
  - Displays battery voltage.
  - Alarm warning when voltage drops below 11.6v or rises above 15v.

3076

#### OTC HD Scan with Ez-Tap

- In-shop wireless capability.
- Ez-Tap Wireless Vehicle Communication Interface (VCI) works with OEM diagnostic software.
- One wireless VCI for all your diagnostic software.
- Eliminate cables and cable replacement costs.



3395

#### Multimedia Interface Tester (MIT)

Stay Connected:  
Verify AUX, USB and  
Bluetooth connectivity

- Will pair via Bluetooth, Auxiliary or USB to vehicle to diagnose connectivity issues.
- Verify and diagnose customer complaints when connecting with infotainment systems.
- Provides a clean signal for accurate and reliable diagnostics.
- Works on Ford, GM and Hyundai vehicles.
- Includes a storage case that will accommodate the MIT and related adapters.



3418

#### OTC Heavy-Duty Code Reader

- Class 4 – 8 truck coverage.
- HD J1587 / J1708 and J1939 CAN, Engine, Transmission / ABS coverage and more for diagnostic trouble codes!
- Read and clear diagnostic trouble codes.
- Provides on screen DTC definitions or heavy-duty standard codes.
- Battery powered for off vehicle use.
- Internet update capable.

#### Applications:

Tow trucks, recreational vehicles, cement trucks, dump trucks, garbage trucks, buses, step vans, municipal vehicles, refrigerated trucks, and conventional trucks.

Heavy-Duty Standard compliant construction, marine, agriculture, & industrial diesel power plant configurations!

**Includes:** 9-Pin deutsch cable, 6-Pin deutsch cable, operations manual, 3-year warranty, and soft nylon carrying case.



### TPMS Service Made Easy With OTC

The expected lifespan of tire pressure monitoring system (TPMS) sensors is between 7 and 10 years, meaning many vehicles coming into your shop are already in need or going to be in need of replacement sensors. Use this opportunity to educate your customers on the importance of the TPMS sensors – safety, vehicle awareness and peace of mind.

OTC recently brought a new standalone OBDII TPMS tool to market with basic diagnostics capabilities. Think of it as a TPMS tool with a built-in enhanced code reader. Plug the dongle in to the OBD II port and scan each tire's TPMS sensor. The vehicle will learn and register the sensor position and PSI almost instantly, allowing the relearn procedure to take less than 10 minutes.

3838

#### Standalone TPMS Tool with Bluetooth OBD II

The OTC 3838 is both a sensor activation and diagnostic device that features a wireless OBD II module for TPMS sensor registration. The tool works with all OEM and aftermarket sensors.

- Exclusive wireless OBD-II module for TPMS sensor registration.
- Standalone TPMS tool with activation, relearn & diagnostic capabilities.
- Three years of software updates included.
- Allows for cloning of universal sensors.
- KEY FOB signal test and infrared print capabilities.



NEW



3208

#### OBD II & ABS Scan Tool

- Read ABS code and definitions for most 1996-2013 GM, Ford, Chrysler, Honda, Hyundai, Nissan and Toyota vehicles.
- View live engine data.
- Read/erase hot keys.
- View all available I/M Monitors and freeze frame data.
- Automatically reads DTC's (Diagnostic Trouble Codes) when connected for fast diagnostics.
- Works on all 1996 and newer vehicles (OBD II & CAN).

NEW



3209

#### Trilingual OBD II, ABS & Airbag Scan Tool

- Color screen.
- ABS & Airbag code and definitions for most 1996-2013 GM, Ford, Chrysler, Honda, Hyundai, Nissan and Toyota vehicles.
- Battery, Alternator and Charging System Monitor.
- Graph, record and playback live data.
- Full manufacturer specific code definitions.
- Updateable – USB update cable included.
- Live engine data.
- AutoID® – Automatically selects the vehicle so you don't have to on most 2000 and newer vehicles.
- View all OBD II global data including Modes 5, 6 & 8.

## Engine Tools



7481

#### Supply Tube Removal Tool

- Removes high pressure fuel supply tube.
- Fits Ford 6.0L diesel engines, 2003-2010.
- Similar to 303-1164.



7447

#### Cover Alignment Tool

- Aligns front and rear timing chain/crank seal cover.
- Fits GM 4.8L, 5.3L, 5.7L, 6.0L engines, 1996-Present.
- Similar to J-41476.



7221

#### Flywheel Holder

- Holds flywheel in a locked position for servicing.
- Fits GM 6.6L Duramax Diesel, 2001 to present.
- Similar to J-44643.



7223

#### Glow Plug Bore Reamer

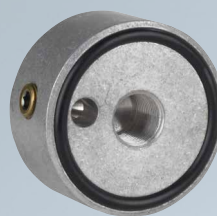
- Reams glow plug bores for proper replacement of glow plugs.
- Fits GM 6.6L Duramax Diesel, 2001 to present.
- Similar to EN-51249.



7482

#### EGR Valve Puller

- Removes EGR valve.
- Fits Ford 6.4L diesel engines, 2008-2010.
- Similar to 303-1267A



7219

#### Oil Pressure Adapter

- Allows for engine oil pressure to be measured.
- Installs in place of oil filter providing ports to attach oil pressure tester.
- Dual port for bottom or side tester connection.
- Installs with 11/16" (17mm) hex drive socket.
- Fits GM 4.8L, 5.3L, 5.7L, 6.0L engines, 1996-Present.
- Similar to J-42907.



7222

#### Injector Tube Remover/Installer

- Removes injector tubes for service and re-installs.
- Fits GM 6.6L Duramax Diesel, 2001 to present.
- Similar to J-45910.



7483

#### Water Pump Puller Remover/Installer

- Removes/installs water pump pulley.
- Fits Ford 2.5L & 3.0L Duratec engines, 1994-Present.
- Similar to 303-S455.



7220

#### Power Steering Bleeder Adapter

- Allows for air to be bled out of power steering systems.
- Used in conjunction with the a vacuum hand pump or brake bleeder.
- Fits GM & other makes power steering reservoirs.
- Similar to J-43485.



4573

#### Universal Overhead Valve Spring Compressor

- Permits removal and installation of valve springs without removing the cylinder head on many cars and light trucks. Durable steel construction. Spring loaded offset jaws easily grip and compress valve springs.



**NEW**



**6981**

### Blind Hole Puller Set

Pilot bearings and pilot bushings are one of the most critical components in a transmission - clutch system. Damage, wear, or contamination can result in binding on the input gear and may be revealed as clutch drag symptom or even a growling sound when clutch pedal is fully released. Address these problems with the new 6981 blind hole puller set from OTC.

- Innovative Design covers I.D. from 5/16" to 1-1/4" (Patent Applied for).
- 5 - collet-actuator combinations cover 5/16" to 1-14" I.D.
- Use collets with Pulling Bridge or as Slide Hammer Attachment.
- Easy to read component application chart and instructions.
- Conveniently laid out in rugged blow mold storage case.
- Forged and/or Machined here at our factory in Owatonna, MN.



**6554**

### Fuel / AC Line Disconnect Kit

The OTC 6554 Fuel and AC Line Disconnect Kit provides technicians with a great selection of disconnect tools - intended for top-side vehicle service. We've included ONLY the disconnect tools needed for vehicles on the road today and only tools intended for Fuel and AC lines in the OTC 6554.

- Topside disconnects for AC and Fuel lines.
- Clips, disc, and scissor styles for broad applications.
- Hi-visibility line plugs included.



**6617**

### Alternator Pulley Service Kit

- Overrunning alternator pulley and Overrunning alternator decoupler pulley are designed to extend belt life and belt tensioner life.
- These tools hold the alternator shaft still so the pulley can be removed or installed.
- Kit includes: Decoupler tool assembly, 17 mm hex drive, 17 mm Allen wrench 110 mm socket extension, 28 mm / 21 mm hex cap nut driver, 28 mm / 18 mm hex cap nut driver, 22 mm hex cap nut driver

## Transmission / Drive Axle



**4406**

### Adjustable Bearing Race and Seal Driver

- Universal and fully adjustable.
- Twist head to adjustable from 3/4" to 3.5" (19mm to 89mm).
- Lock bolt holds jaws to preferred diameter.
- Steel striking cap mounted on aluminum handle and head provides a weight under 2 lbs.



**4528**

### Clutch Alignment Tool Set (17 piece)

- Essential for clutch installation on virtually all cars and light-duty trucks. Aligns clutch plate by using tapered cones and pilot adapters.
- Includes seven fractional pilot adapters, 1", 13/16", 25/32", 3/4", 11/16", 5/8", 19/32" one clutch disc centering adapter, and one alignment shaft.
- Includes five metric pilot adapters, 19mm, 17mm, 16mm, 14mm, 12mm, two clutch disc centering adapters, and one alignment shaft.
- Housed in a blow-molded storage case.



**5610**

### Transmission/Engine Oil Pressure Kit

Domestic and import applications. High and low pressure gauges make this kit useful for both transmission and engine work. Kit comes complete with adapter for most applications. Designed to be used for both static and on road testing.

- Large 3-1/2" gauges feature a chrome bezel and rugged protective outer boot.
- Low pressure gauge reads 0-100 psi and 0-2800 kPa.
- High pressure gauge reads 0-400 psi and 0-2800 kPa.
- Both gauges include rear hook to allow gauge to be hung conveniently out of the way.
- Gauges and hose assembly incorporate quick couplers for easy disconnect.
- Kit includes 13 adapters and a detailed instruction manual.



**6616**

### GM Water Pump Holding Tool

- Holds timing chain in place so water pump can be removed for service.
- Special design allows easy installation regardless of timing chain orientation, and prevents bolts from falling into the timing case.
- Simply remove access plate from front cover and install the tool.
- Tool saves costly loss of timing on 2002-current GM 2.2L and 2.4L EcoTech motors found in Chevrolet, Oldsmobile, Pontiac, and Saturn platforms.



**4507**

### Bearing Race/Seal Driver Set (10 piece)

- This aluminum constructed set permits installation of tapered bearing races and seals without damage to the component or housing.
- Tapered side of driver is used to install races. Invert the driver to the flat side to install seals.
- Housed in a blow-molded plastic storage case.
- Includes driver handle with bolt, plus these tool sizes: 1.565", 1.750", 1.965", 2.325", 2.470", 2.555", 2.830", 2.995", and 3.180".



**6694**

### Axle Seal Installer

- Designed to install the axle seal on GM Trucks with 10-1/2" ring gear.
- Similar to J-24428-A.



**4508**

### Professional Style Seal Puller

- Designed to remove oil and grease seals when servicing cars, SUVs, and light trucks without damaging the housing or bearing.
- Hook tips in two sizes and professional handle design allows removal of hard-to-get-at seals by getting under them.
- The tool is 12" long and the hook tip is double-secured (versus competitors' designs), for durability.
- An extra blade is included.



1/2" is similar to Ford 307-459.

3/8" is similar to Ford 307-441.

**6601**

### Locknut Socket - Ford

- Services 2003-newer Ford F-250, F-350, and F-450 Super Duty trucks with 10-1/2 inch rear axle.
- 1/2" sq. drive.



2-3/4" O.D.

**7158**

### Locknut Socket Ford, Dodge, GM

- Services 1985-1/2-95 Ford F-series H.D. 3/4- and 1-ton Dana 50 IFS of Dana 60 front axle; 1982-90 GM H.D. 3/4- and 1-ton trucks, 1994-newer Dodge Dana 60 with Cummins.
- 1/2" sq. drive.
- Similar to Ford 205-D065 (D85T-1197-A)



2-1/2"

**7217**

### Axle Nut Socket

- Designed to fit the axle nut on Chevy Topkick/Kodiak, 2003 - Newer.
- Similar to J-44275.



**7218**

### Axle Hub Nut Socket

- Removes/installs the axle hub bearing retaining nut.
- Fits GM 11-1/2" rear axle found on 2011 and newer trucks.
- 9 Pin socket, 1/2" drive.
- Similar to CH-50636.



**6593**

### Ford Transmission Cooler Line Disconnect Set

- Snap around cooler line, push into the fitting, fitting releases. The cooler line can then be removed.
- 3/8" disconnect is used on 2003-newer Ford Explorers with the 5R55W transmission.
- 1/2" disconnect is used on 2003-newer Ford Super Duty trucks with the 4R100 transmission.

**7445**

### Chrysler Transmission Dipstick

The OTC 7445 is for the Chrysler vehicles that didn't come with factory installed dipsticks. Fits Dodge Sprinter and Chrysler Crossfire transmissions, 2003 to current.



**7446**

### Chrysler Transmission Dipstick

The OTC 7446 is for the Chrysler vehicles that didn't come with factory installed dipsticks. Fits Chrysler, Dodge, Jeep and Volkswagen with NAG1, 42RLE, CV Transmissions, and 62TE Transaxle.



**4543A**

### Locknut Socket Set - 4WD (6 piece)

- Chrome vanadium steel sockets cover most SUV and light truck applications.
- Sockets have 1/2" square drive, allowing use of a torque wrench, ratchet, or breaker bar.



**7269**

### Locknut Socket Ford, GM

- Services 1985-newer Ford F-series 3/4- and 1-ton trucks with Dana 80 rear axle.
- 1/2" sq. drive.
- Similar to Ford 205-282 (T88T-4252-A) Kent Moore J-42855



2-3/4"

**6982DEX**

### 3 Pc Double Edge Screw Extractors

- For unscrewing broken bolts and screws without damaging threads.
- Can be turned in clockwise or counter clockwise direction for right and left handed threads.
- Drive extractor into drill hole for secure fit.
- Hex shank design works with standard hex sockets eliminating rounded corners.
- Industrial Quality - Made from High Strength Steel - Tapered Flute design.



**6982DGS**

### Drilling Guide System

- Drill perfectly centered holes in broken studs.
- Anchor rail guide on any open hole within reach of broken stud - 6 inch reach.
- 4 bushings for common stud sizes - 6mm, 8mm, 10mm, and 12mm.
- 4 drilling guides for progressive drilling - 1/16", 3/32", 1/8" and 5/32".
- Conveniently stores in vinyl pouch - includes instructions.
- Made in USA with a Lifetime Warranty.







2524

### Power Door Skin Removers

Cuts through rounded door-hem edge, over body lines, and around corners to remove door skins.

- Eliminates time consuming and messy grinding.
- 20 gauge capacity in steel and other common sheet metals.
- Cuts straight and to the left for round or square auto body patches.
- Compact, lightweight, one hand operation.

**2524**

### Power Door Skin Remover Air

Compatible with most existing air set-ups.

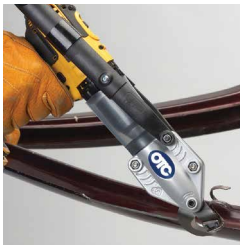
**2525**

### Power Door Skin Remover

Use with minimum 14.4V 3/8" cordless or corded drill.

**2525RB**

Replacement Blades for 2524 & 2525



**NEW**



Use with minimum 14.4V 3/8" cordless or corded drill.

**2531**

### Power Shear Corrugated Metal

- Easily cuts body panels across sharper body lines as well as large and small corrugated sheet metal.
- 24 gauge capacity in steel and other common sheet metals.
- Cuts straight and to the left for round or square holes.
- Compact, lightweight, one hand operation.

**2531RB**

Replacement Blades



2526

### Power Hemming Tools

- Designed to efficiently hem the edges of replacement door skins with speed and precision.
- Minimum manual tacking required.
- High impact ABS polymer anvil will not scratch or mar the replacement door skin.
- 20 gauge capacity in steel and other common sheet metals.

**2526**

### Power Hemming Tool Air

Compatible with most existing air set-ups.

**2527**

### Power Hemming Tool

Use with minimum 14.4V 3/8" cordless or corded drill.

**2527RA**

Replacement Anvil for 2526 & 2527



**NEW**



2535

### Power Shear 18

- Easily cuts body panels, wide opening jaws also navigate thick plastic bumper profiles, rocker panels, and layered material.
- 18 gauge capacity in steel and other common sheet metals.
- Cuts straight and to the left for round or square auto body patches.
- Compact, lightweight, one hand operation.

**2534**

### Power Shear 18 Air

Compatible with most existing air set-ups.

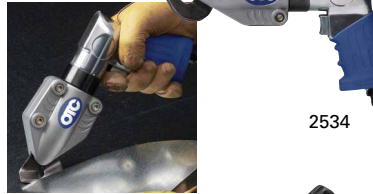
**2535**

### Power Shear 18

Use with minimum 14.4V 3/8" cordless or corded drill.

**2535RB**

Replacement Blades for 2534 & 2535



2534



2527

### Power Quarter Panel Hemming Tools

Easily bend and close wheel arc flanges on quarter panels.

- Replicates a hammer and dolly motion at high speed, with greater precision and faster results.
- Reversible hammer head allows folding of the flange and sealing of the seam.
- Hand peg provides smooth operation and controlled maneuverability.

**2528**

### Power Quarter Panel Hemming Tool Air

Compatible with most existing air set-ups.

**2529**

### Power Quarter Panel Hemming Tool

Use with minimum 14.4V 3/8" cordless or corded drill.

**2529RH**

Replacement Hammer

**2529RA**

Replacement Anvil for 2528 & 2529



**NEW**



2537

### Power Shear 16

Heavy metal cutting performance with a 16 gauge capacity.

- The spiral foot allows for easy left, right, or straight cutting action.
- Outstanding accessibility and control at air speed.
- 5 position 0 to 90 degree adjustable head angle.
- Long life 4 sided cutting insert.

**2536**

### Power Shear 16 Air

Compatible with most existing air set-ups.

**2537**

### Power Shear 16

Use with minimum 14.4V 3/8" cordless or corded drill.

**2537RB**

Replacement Blades for 2536 & 2537



2536

## NEW Synthetic Body Tools



**2470**

### Spot Weld Breaker

- Use with hammer to slice through panels after spot welds have been drilled.



**2472**

### Window Trim and Molding Remover

- Perfect for removal of fragile trim pieces like chrome window trim.



**2474**

### Heavy Duty Profile Straightening Tool

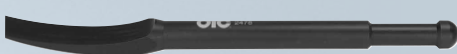
- Designed to reshape straight profiles with minimal deflection



**2476**

### Curved and Flat Dolly

- Designed for both curved and straight area shaping.



**2478**

### Extended Reach Bumping Tool

- Designed for use on hard to reach areas such as door skins, panels, hood and deck lids.



**2480**

### 60mm Trim Wedge

- For safe removal of body trim - wider profile for larger pieces.



**2471**

### Trim & Bezel Tool

- Trim panel pry tool - non-marring tool for many interior trim and bezel pieces.



**2473**

### Half Round Bumping Tool

- Designed to reshape rounded metal profiles
- Good performance in confined areas.



**2475**

### Round Body Anvil

- Use on rounded surfaces.
- Rounded Chisel end to reshape small diameter round profiles.
- Wide striking area for accurate strikes.



**2477**

### Edge Straightener

- Use to straighten edges.
- Wide profile enhances professional finish.
- Perfect for doors, fenders and hoods.



**2479**

### 30mm Trim Wedge

- For safe removal of body trim safely - without damage.



**2491**

### Stepped Lever Wedge

- Designed to assist alignment of doors and glass



**2481**

### Blind Panel Removal Wedge

- Designed to reach inside panel release points for blind removal support.



**2482**

### 120mm x 30mm Pick Hammer

- Synthetic hammers designed by body repair pros for precise and effective working, ease of use.



**2484**

### 160mm x 40mm Finishing Hammer

- Use directly on body panel, or in conjunction with other repair tools.



**2487**

### Combination Wedge Pry Tool

- Designed to safely pry plastic automotive pin style fasteners.



**2490**

### Universal Hook

- Dual purpose hooking / prying tool.
- Designed to safely pry small bezel components from interiors without damage.



**2485**

### 3Pc Bumping Tool Set

- Door Aligner, Center Punch and Straightener - Available individually.



**2488**

### Pinch seam straightener

- Designed to realign, and straighten pinch seams.



**2489-8**

### Single Spotweld Carbide Drill Bit

- High Speed Steel construction specially treated to maintain sharpness.
- Self Centering with 3 cutting points!
- Designed for Drilling through Spot Welds.



**2492**

### 5 Pc Spotweld Carbide Drill Bit Set

- Super Hard Titanium construction - specially treated to resist dulling in hi temp environments.
- Designed for Drilling through Spot Welds.





### 28" Swing Arm Tire Changer

- **Large Clamping Capacity** - Maximum external capacity up to 28", without the need for adapters.
- **Helper Arm Device (H)** - Bead press device and bead roller operate independently yielding more control from two points of contact.
- **2-Speed Rotating Turntable (E)** - Allows for exact torque when needed, and only requires a 110V electric circuit.
- **Ergonomic Bead Breaker Control (C)** - The hand operated bead breaker allows for easy tire/wheel demounting while minimizing operator discomfort.
- **Stable Design** - Extreme structural rigidity by virtue of the patented G-Frame design greatly reduces mount/demount head flexing which essentially eliminates damage to wheels and tires.
- **Warranty** - Standard 3 years parts and labor.

#### Available Models

TCE4275EH	Swing Arm Tire Changer 28" 2 Speed Electric w/ Helper Assembly
TCE4275EHC	Swing Arm Tire Changer 28" 2 Speed Electric Turntable w/ Ergonomic Bead Breaker and Helper Assembly
TCE4275AHC	Swing Arm Tire Changer 28" Air Turntable Helper Assembly w/ Ergonomic Bead Breaker
TCE4275EC	Swing Arm Tire Changer 28" 2 Speed Electric Turntable, Ergonomic Bead Breakers

### TCE4435THP

- Pneumatic tilt tower
- Extreme structural rigidity for reduced flexion even for the most difficult UHP or RFT.
- Tabletop system with 22" external clamping, 24" internal clamping
- Helper Assembly to reduce operator effort on the toughest tire & wheel combinations.
- Standard 3 year parts and labor warranty



**PRICE REDUCTION**



### 28" Tilt Back Tire Changer

- **Large Clamping Capacity** - Maximum external capacity up to 28", without the need for adapters.
- **Helper Arm Device** - The bead press device and bead roller operate independently yielding more control from two points of contact.
- **2-Speed Electronic Turntable** - Allows for exact torque when needed, and only requires a 110V electric circuit.
- **Ergonomic Control for Bead Breaking** - The hand operated bead breaker allows for easy tire/wheel demounting while minimizing operator discomfort.
- **Stable Design** - Extreme structural rigidity by virtue of the patented G-Frame design greatly reduces mount/demount head flexing which essentially eliminates damage to wheels and tires.
- **Warranty** - Standard 3 years parts and labor.

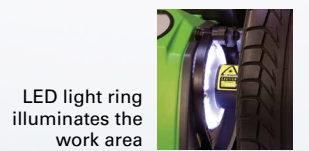
#### Available Models

TCE4475EHC	28-inch Tilt Back Tire Changer, 2 Speed Electric Turntable with Ergonomic Bead Breaker and Helper Assembly
------------	--

### 1694100246

#### WBE 4430 Premium Monitor Display Wheel Balancer

- 3D automatic data entry.
- Monitor display wheel balancer.
- Laser for precise weight placement.
- LED light ring illuminates the work area where you need it most.
- Easy and intuitive operation with visual monitor display program.
- Weight location intuition eliminates menu selections and saves time.
- Fast 6 second cycle time.
- Auto-locking arm puts tape weights in the correct location every time.



LED light ring illuminates the work area

## New Series: Hydraulic Flow Meters

Unparalleled accuracy in testing hydraulic oil flow circuits for vehicles and machinery. All are protected by a durable steel case. Pressure accuracy is at +/- 1.6% of full scale. Due to their standard burst disc protection system, overpressure conditions prevent spillage of hydraulic fluid. All devices accommodate bi-directional flow and are CE marked as appropriate.

**NEW**



### 4277

#### 50 gpm Mechanical Hydraulic Flow Meter

- Flow Accuracy to +/- 4% of full scale
- Measures flow from 4 to 54 gpm
- Pressure up to 6000 psi
- Fluid filled analog gage that dampens vibration
- Temperatures up to 230 deg F
- Reads flow in one direction
- No batteries required
- Port is 1-5/16" - 12 UN JIC Male
- 12.25" x 4.125" x 4.875", weights 14.5 lbs

**NEW**



### 4278

#### 100 gpm Digital Hydraulic Flow Meter

- Flow Accuracy to +/- 1% of indicated value
- Measures flow from 2.5 to 100 gpm
- Pressure up to 6000 psi
- Digital display for flow, temperature, analog for pressure
- Temperatures up to 250 deg F
- Reads flow in both directions, pressure on the high side of valve
- Requires 1 9V battery (included)
- Port is 1-5/16" -12UN #16 SAE ORB
- 9.45" x 7.87" x 7.87", weights 14 lbs

**NEW**



### 4285

#### 100 gpm Digital Hydraulic Flow Test Kit

- Includes OTC 4292 Digital Readout and OTC 4291 Flow Block with Loading Valve
- Flow Accuracy to +/- 1% of indicated value
- Measures flow from 2.5 to 100 gpm
- Pressure up to 6000 psi
- Digital display for flow, temperature, analog for pressure
- Reads flow in both directions, pressure on the high side of valve
- Require 1 9V battery (included)
- Port is 1-5/16" -12UN #16 SAE ORB
- 12.99" x 12.4" x 10.24", weights 17lbs

### 6- & 10-Ton Capacity Air/Hydraulic Service Jack

- Huge steel front wheels are mounted in bearings for trouble-free service life. Rear swivel casters make spotting the jack easy.
- Spring-loaded handle can be locked in three positions.
- Covered by OTC Lifetime Marathon Warranty®.

**5106** - 6-Ton Air/Hydraulic Service Jack. Lifting range 4-3/4" to 23-1/4", reach 87", 45" handle.

**5110** - 10-Ton Air/Hydraulic Service Jack. Lifting range 6-3/4" to 26-7/8", reach 93", 47" handle.



### 5280

#### OTC Portable Diesel Particulate Filter Cleaner

- Robust design for long shop life.
- High pressure cleaning process for thorough cleaning of ash from DPF - produces 10 times the burst energy of competitive low pressure units.
- Burst Quick Check identifies if filter is too plugged for proper cleaning.
- Movable with locking wheels for placement throughout the shop.
- Computer controlled process based on OE requirements for start-to-finish cleaning without constant technician monitoring.
- Containment of hazardous ash for easy disposal.
- HEPA Filter Air Exhaust System included to exceed shop environmental air standards.
- Operates on standard 115V outlet.
- Proven to clean to over 92% efficiency.
- Third-party OEM test results using pin gauge measurement with approved OTC adapters and burst cycles. Actual results may vary.



### 5286

#### OTC Portable Diesel Particulate Filter Cleaner

- The advent of the 2010 Tier 4 cleaning requirements created the need for a lighter, more portable cleaning system which can be taken into the field to clean filters at the point of service.
- Lightweight and Highly Portable - ideal cleaning system for use in the shop or on a service truck.
- Flexibility - clean DPF's from 6" to 15.5" in diameter using shop or compressed air of at least 100 PSI.
- Fully Automated Operation - once started, the cleaning process can be completed unmonitored, freeing up technician to simultaneously do other work in the shop.
- Focused Air Jet Technology™ - concentrates a precise high pressure stream of air directly into every cell.
- Maximum Efficiency - OTC's unique floating puck prevents "splash back," which maximizes the volume of air entering each cell.
- Easy Maintenance - contains no internal filters that require user maintenance and its rugged design provides maximum durability.



### 3095

#### Heavy-Duty Digital DEF Tester

Ensure the proper operation of Class 7-8 trucks utilizing the SCR system with accurate Diesel Exhaust Fluid solution displayed on screen.

- Digital Display
- Displays UREA percentage
- Displays washer fluid freeze point

The OTC 3095 makes testing a simple and quick process for an operator or technician.



#### OTC DPF Thermal Processing Unit

- Designed to facilitate the cleaning of filters - with high amounts of wet soot, and unburned hydrocarbons.
- Pre-programmed thermal profile controls temperature 'ramp up' and 'cool down' to reduce the risk of cracking the DPF.
- Holds temperature constant for two hours to ensure complete regeneration of filter.
- Built-in electronic safety lock prevents unauthorized opening of the door when temperatures exceed 200 degrees F.
- Large chamber accommodates various DPF sizes and shapes. Front access door allows for easy access to the thermal chamber.
- Includes "pre-treat" cycle for oil-soaked filters.



### 5281

### 5213T

#### 12-ton Telescopic Bottle Jack

- Telescopic feature allows for very low initial height with high lifting.
- Lifting range 9-5/8" to 22-1/2".
- Base size: 7.70" L x 5.67" W.



#### Dualmaster Two-Stage Hand Pumps

### 4008

Hydraulic hand pump with No. 9584 2-position, 3-way control valve (for operating single-acting rams), and No. 4006 BL2 2-gallon reservoir with legs.

### 4009

Hydraulic hand pump with No. 9500 3-position, 4-way control valve (for operating double-acting rams), and No. 4006 BL2 2-gallon reservoir with legs.

### 5025

#### OTC DEF Refractometer

SCR & EPA 2010 EPA regulations require all diesel engines manufactured on or after Jan. 1, 2010 to meet lowered NOx emissions standards.

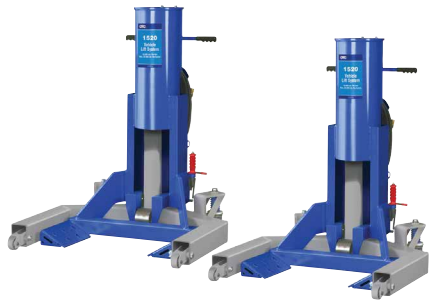


#### Application:

The refractometer is a portable, precision, optical instrument used for measuring the Diesel Exhaust Fluid (DEF) concentration. When a liquid sample is placed on the prism, the light passing through it is bent, and shows on the scale to indicate the DEF condition.

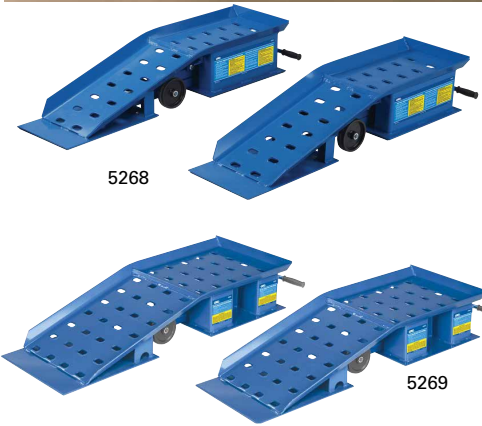


## Heavy Duty Equipment



### 1520 Mobile Vehicle Lift System (Includes two lifts)

- Mobile, tandem system is air-operated to handle your class 7 and 8 tractor lifting needs. No need to waste time re-blocking and making additional lifts for the clearance you need for under-vehicle service. Roll the system to the vehicle anywhere in the shop or outside on a level surface.
- Unique design provides lift from the tires, not the frame or axle members. Ideal for situations where limited ground clearance or a lack of clear access complicates lifting.
- Single controller operates both sides of the system for a smooth, level lift up to two full feet from the bottom of the tires to the ground. Units can double as support stands when retention pin is inserted.
- Covered by OTC Lifetime Marathon Warranty®.



### 20-Ton Truck Ramps

- Long, retractable T-handle enhances mobility.
- Non-skid rubber matting prevents slippage during use.
- Durable, heavy-duty rubber wheels.
- Capacity per pair is 20 tons
- Covered by OTC Lifetime Warranty®.

**5268** – 20-ton truck ramps handle up to 10" tread width.

**5269** – Wide 20-ton truck ramps handle up to 16" tread width.



### 5105B 1,100 lb. Capacity High-Lift Dual Wheel Dolly

- Effortless air-powered hydraulic lift system for a variety of applications.
- 0 to 42" lifting range.
- Six-inch lateral adjustment.
- Tilt adjustment of +15° to -8° ensures easy alignment.
- Features four swivel casters, two locking, for enhanced mobility.



### 5130 OTC 1,000 lb. Capacity DriveMaster™ Driveline Lift

- Low profile of 7".
- Lift range: 23" to 30".
- Pivoting pump handle +/- 15° tilt in each direction.
- Includes 553516 differential mounting adapter. Mounts easily using existing bolt patterns. Fits the most common differentials currently in use on Category 7 and 8 Heavy Duty Trucks. Including: Eaton, Fuller, Rockwell, Meritor, Spicer, International, and Mack.
- CE certified, PALD compliant.

#### Optional adapter kits

- 558382** – Auxiliary box adapter.
- 561949** – Light duty transmission adapter.

### 1781B 4,000 lb. Capacity Underhoist Tripod Stand

- Ideal for undercar maintenance. An ACME take-up screw precisely positions and secures the support stand in place.
- Height range of 65-3/4" to 74-5/8".



### 1783 Heavy-Duty 20-Ton Capacity Adjustable Support (One only)

- Designed for the really big service jobs. Rugged steel construction, and large 15-1/2" square base will satisfy support requirements up to 40,000 lbs.
- Features include 4-point adjustment. Height range is 15-1/4" to 24". Saddle diameter is 6".
- Covered by OTC Lifetime Marathon Warranty®.
- Note: Recommend use in pairs.



- Long, retractable T-handle enhances mobility.
- Non-skid rubber matting prevents slippage during use.
- Durable, heavy-duty rubber wheels.
- Capacity per pair is 20 tons
- Covered by OTC Lifetime Warranty®.

**5268** – 20-ton truck ramps handle up to 10" tread width.

**5269** – Wide 20-ton truck ramps handle up to 16" tread width.

## OTC Service Jacks

### 1511B 10-Ton Air/Hydraulic Service Jack

- Lifting range 6-3/8" to 22"
- Overall reach 90"
- Bring the versatility of air-assist operation to your shop's lifting tasks.
- Huge front wheels mounted in bearings provide trouble-free service life. Rugged steel frame members.
- Rear swivel casters make spotting the jack easy. Spring-loaded handle may be locked in three positions, from horizontal to vertical.



### 2- & 3-Ton Service Jack

- Ergonomic handle for user comfort & easy mobility.
- Foot pedal for quick approach of the lifting saddle to load. Built-in tray for fasteners and tools.
- CE certified, PALD compliant.
- Covered by OTC Lifetime Warranty®.

**5202** – 2-ton service jack. Min. height 3"; Max. height 18-1/4".

**5203** – 3-ton service jack. Min. height 5-1/2"; Max. height 20-1/2".



### 1580 1,500 lb. Capacity Easy Roller™

- Provides simple and efficient method of moving a disabled vehicle around a shop environment.
- Fits tread widths up to 12".
- 4 heavy-duty phenolic casters.
- 1,500 lbs. capacity per unit.
- Hydraulic lift mechanism with locking pin.



### 6,000 lb. Capacity Heavy-Duty Mobile Floor Cranes

- Three boom positions give capacities of 4,000, 5,000, and 6,000 lbs. to handle the biggest engines, and often the transmission right along with the engine! Usable reach is almost 92".
- Boom swivels for vertical and lateral positioning; legs extend to straddle the biggest tires.

**1814** – 6,000 lb. capacity crane with electric/hydraulic pump (115V) with remote motor control.

**1813** – 6,000 lb. capacity crane with two-speed hydraulic hand pump.

### 1770A 1,500 lb. Dual Wheel Dolly

- Hydraulic jack provides almost 5" of lift and tilts wheel assembly 4° to prevent damage to wheel seal.
- Independent lifting rack provides maximum stability; rollers won't catch on load.
- Swivel casters for easy maneuverability.
- Floor space is 45" by 41".
- 6" chain holds load in place.
- Covered by OTC Lifetime Marathon Warranty®.



### OTC Rear Suspension Bushing Tool

- Removes FAS II Airliner Freightliner Rear Suspension bushings in a fraction of the time of traditional methods.
- Saves on average 45 minutes per bushing (4 per vehicle) on flat rate of 1.5 hours per bushing.

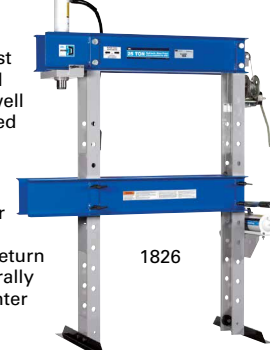
**4244** Freightliner Rear Suspension Tool.

**4245** Freightliner Rear Suspension Tool – Master Kit includes 2510A Air/Hydraulic Pump.



### 25-Ton Capacity Heavy-Duty "Open Throat" Press

- Enables ram to be positioned outside of press frame for fast axle bearing removal and installation, as well as other tasks. Rugged press is covered by OTC Lifetime Marathon Warranty®.
- Press bed is raised or lowered with a hand crank, and a spring-return hydraulic ram is laterally adjustable for off-center work at full capacity.



**1826** 25-ton capacity press includes OTC No. 4002 hand pump and 6-1/4" stroke ram.

**1826A** 25-ton capacity press Includes No. 4020 air/hydraulic pump; equipped the same as 1826.



### 55- and 100-Ton Aluminum Rams

- Get the strength of a steel ram but about half the weight. Easily carry these single-acting, spring-return rams around the garage, shop, or into the field for on-the-vehicle repairs. They are ideal for truck axle correction, trailer frame straightening, general vehicle maintenance, and heavy-duty lifting.

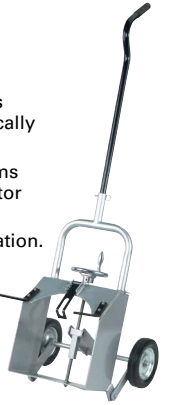
**4111** – 55-ton aluminum ram. 6-1/8" stroke. Height collapsed 10-3/4", Extended 16-7/8".

**4116** – 100-ton aluminum ram. 6-1/4" stroke. Height collapsed 11-3/4", Extended 18".

### 1543

#### Brake Drum Dolly

- Removes, installs, and transports truck brake drums without physically having to lift them.
- Works on all 15" and 16-1/2" drums found on most class 7 and 8 tractor and trailer brake systems.
- 6" height adjustment aids installation.
- Heavy-gauge steel construction, 8" tires, and 36" handle.



### 5077A



#### OTC Transfer Tanker

- Draining oil from a large displacement engine and getting it to your bulk storage container is a snap.
- Used oil is collected in the 15-gallon reservoir, and then rolls smoothly on 4" free-wheeling casters to your storage location.
- Pump moves five gallons a minute through the 8-foot transfer hose.
- Low profile, measures 7-1/2" from floor to top of reservoir.
- Can also be used for transferring antifreeze.

**5077A** – Transfer Tanker equipped with an electric pump (No. 528093).

**5097** – Transfer Tanker equipped with a pneumatic pump (No. 529966).



### 1726A 1,000 lb. Capacity Engine Stand

- A timesaver for passenger car and light truck engine rebuilding or repair. Four adjustable attachment arms make engine mounting fast and easy.
- Engine can be rotated a full 360° with a turn of the handle; a locking pin secures the work in any of eight positions.
- Two rear wheels lock tightly to anchor the stand in place.
- Easy one-bolt disassembly for transport of stand.
- Covered by OTC Lifetime Marathon Warranty®.

#### Specifications:

Height to center line – 28"      Length – 46"  
Width – 35-1/2"      Handle length – 24"



#### Slack Adjust Pullers

These pullers will yank even the most corroded slack adjuster off the S-cam – and do so in just a fraction of the time needed with "heat and beat" methods. Plus, they won't damage components. Both pullers have a rugged forcing screw and cast steel body. Puller

No. 5055 fits many manual types, and the No. 5056 works on Rockwell, Haldex, Gunite, and Bendix automatic adjusters.

**5055** – Manual slack adjuster puller.

**5056** – Automatic slack adjuster puller.



### 5086 10-Ton Collision Repair Set

- Exert hydraulic force just where it's needed to lift, spread, bend, or straighten. Handles the high-force jobs you face daily in trailer maintenance or other applications.
- Includes reliable components including 10-ton, 10-1/8" stroke hydraulic ram; air/hydraulic pumping unit; hydraulic hose; four snap-together extension tubes; extension tube coupling; serrated saddle; flat base; 90° wedge head; flex head; storage case.
- All set components are covered by OTC Lifetime Marathon Warranty®.



### Unmatched 98.5% recovery

Robinair introduces its next innovation, the 34788NI and 34788NI-H, featuring an industry-leading 98.5% recovery efficiency for standard and hybrid vehicles and fully automatic function.



#### 34788NI

##### Premier R-134A Refrigerant Recovery, Recycling, and Recharging Machine

- Fully-Automatic Function: Program to recover, vacuum, leak test and charge without operating panel valves.
- Automatic Oil Drain: A display reminds you to empty the graduated container to show the amount of oil to replace.
- Oil Inject: Automatically inject oil back into the vehicle's A/C systems.
- Refrigerant & Oil Database: A/C system capacities for North American market vehicles
- Automatic Refrigerant Refill: Maintains a user-selectable amount of refrigerant in an internal vessel and signals when it's time to change supply tank, no monitoring required.
- Optional Printer.

#### 34788NI-H

Electric Vehicle: Capable of servicing high voltage electric compressor A/C systems.

#### 34988

##### A/C Recover, Recycle, Recharge Machine

- Recovers, recycles, evacuates, leak tests, & recharges R-134a quickly & accurately.
- Fully-Automatic Function: Program to recover, vacuum, leak test and charge without operating panel valves.
- Automatic Dye Inject: Gives the user the ability to use the machine to inject UV dye into a vehicle's A/C system.
- Automatic Oil measure & Inject: The machine automatically determines how much lubrication oil needs to be injected back into the A/C system based on how much oil was taken out during recovery.
- Optional Refrigerant & Oil Database: Includes A/C Charge and Oil Capacities for North American market vehicles.
- A/C system flush: Flushes a vehicle's A/C system with refrigerant eliminating an residual oil or other liquid.



#### 34288

##### A/C Recover, Recycle, Recharge Machine

- The 34288 combines simple operation with superior accuracy. It recovers, recycles, evacuates, and recharges R-134A quickly and accurately.
- Meets SAE J-2788 standards recovering 95% refrigerant and charging to +/- 1/2 oz.
- Automatic Oil Drain: A display reminds you to empty the graduated container to show the amount of oil to replace.
- Automatic Air Purge: Eliminates damaging air without monitoring gauges or opening valves.
- Displays refrigerant use and monitors remaining filter life. Prompts appear when 1/3 of filter life remains.



##### Multi-Purpose and Coolant Fluorescent Dye

**MULTI-PURPOSE** (engine oil, transmission) 16244, 16245

**COOLANT** 16885, 16890



16244

6 applications

16885

6 applications

16890

32 applications

16245

32 applications

##### UV Leak Detection Kits

- The easiest and most accurate gun available today.
- No guesswork – a pre-measured application every time.
- One squeeze injects a pre-measure amount (1/8 oz.) of dye. No more adding too much dye.



16234

16235

#### AC1234-6

##### 1234YF A/C Service

- Fully automatic operation – program for service, walk away and return when complete.
- 95% recovery efficiency
- Programmable vacuum operation helps get to the necessary vacuum level in any condition quickly.
- System leak test to identify gross leaks in a system.
- Charge accuracy within +/- 1/2 oz.
- Automatic oil drain shows how much oil was removed from the system during service.
- Automatic air purge removes the potential of air accumulating in the internal tank.
- Integrated refrigerant identifier (meets SAE J2927)
- Liquid refrigerant flushing function can flush A/C systems or individual components using liquid refrigerant instead of harsh chemicals.
- Automatic internal tank refill. No stopping to fill the internal tank during service, or before service.
- 1/4 Color VGA display. Large easy to read graphical display
- On-board printer capable of printing vehicle service report slips to present to customers.



#### TIF7610

##### IR Thermometer PRO

- SoC (System-on-a-Chip) Technology - Complete IR design incorporated on a single chip, creating compact and lightweight design.
- Innovative optical lens - high accuracy measurements over wide temperature ranges. 10:1 distance to spot (D:S) ratios available.
- Laser pointer -Simply point at desired target and press the trigger for temperature reading.
- High/low pass filters with audible alarms for out of range measurements.
- Temperature modes - Maximum (MAX).



#### 22791

##### InfraRed Refrigerant Leak Detector

- Advanced infrared sensor designed to last a minimum of 10 years.
- Three sensitivity levels down to 0.15 oz./year.
- Automatically recalibrates in highly contaminated areas to help pinpoint the exact location of the leak
- Won't trigger on oil or moisture.



#### TIF9010A

##### Slimline Programmable Scale

- Completely portable refrigerant scale, battery powered, can be used with all refrigerants.
- Extreme accuracy.
- 110 lb./50 kg capacity.



NEW

#### 18410

##### Hydraulic Flaring Kit

- Fabricates a variety of fuel, brake and A/C line flares.
- Push connect 1/4, 5/16 and 3/8".
- GM fuel line, brake line and transmission 5/16 and 3/8".
- Flare and double flare.
- Metric bubble flare.
- Comes in a custom blow molded case.



#### 92500

##### Transmission Fluid Exchanger

- You can have the vehicle in and out of the service bay in less than 20 minutes! Operate through dipstick only, cooler line or a combination of the two!
- Exchange accuracy approx. +/- 1/4 qt.
- 32-qt. supply tank; 34-qt. waste tank.



### Robinair Vacuum Pumps

#### VacuMaster® Single Stage Vacuum Pumps

- 15115 – 1.5 CFM Vacuum Pump.
- 15310 – 3 CFM Vacuum Pump.
- 15510 – 5 CFM Vacuum Pump.



#### VacuMaster® 2-Stage Vacuum Pumps

- 15150 – 1.5 CFM Vacuum Pump.
- 15300 – 3 CFM Vacuum Pump.
- 15500 – 5 CFM Vacuum Pump.



#### CoolTech® Vacuum Pumps

- 15434 – 4 CFM Vacuum Pump.
- 15600 – 6 CFM Vacuum Pump.



#### 16009

##### DiscovR Refrigerant Identifier

- Fast and Accurate. "Pass" and "Fail" lights clearly show if refrigerant is pure enough to be recovered.

##### Product Specifications:

Refrigerant: R134a  
Input Power: 12 VDC  
Accuracy: Pass/Fail - 95% pure R134a  
Air Detection: Yes  
Approvals: SAE J1771, UL/C



#### TIFZX

##### Heated Pentode® Refrigerant Detector

- Heated Pentode® sensor technology
- Tri-color visual leak size indicator
- Detects all CFC, HFC, HCFC's including R-12, R-22, R-123, R-134a, R-404a, R-407a, R-408a, and R-410a.



### Robinair Manifolds

#### 2-Way Brass Manifold



44150

Dual R12/134a Kit

45111

R134a Manifold Hose Kit

#### 2-Way Aluminum Manifold



48510 R134A

- 90° Manual couplers
- 72" R134a Hose Set (1/2" ACME x 14mm)

47150 R12/134A

- 90° Manual couplers
- 72" R134a Hose Set (1/2" ACME x 14mm)
- 72" R12 Hose Set (1/2" ACME x 1/4" MFL)

#### Economy Manifolds



48134A

R134 brass manifold, hose set and service couplers

49134A

R134 aluminum manifold, hose set and service couplers

#### Refrigerant Tanks

17121  
30 lb. tank, 1/4" fittings (25150, 25175, 25200B, 34234, 34300-2K, 34800 series).

17506  
50 lb. tank, 1/4" fittings (17800A, 17800-2K, 17700A, 25150, 25175, 25200B series).



17121

17506