

# MUSCLETOOLS

Electronic Diagnostics | Special Tools | Shop Equipment | A/C Tools

Q1 2017 Edition

OTC ROBINAIR actron BOSCH

## PROMOTIONS

New year, new tool deals. All promotions valid January 1, 2017 through March 31, 2017. Redeem at [Boschrebates.com](http://Boschrebates.com). Dated proof of purchase required. Must redeem by April 30, 2017.

### Purchase an ESI[truck] HD diagnostic tool and receive a 3167-HD

The most complete diagnostic coverage for multibrand heavy-duty trucks and engines, performing special tests and parameter reset capabilities.



3824 or 3824BSC  
Receive a free 3167-HD Heavy-Duty Battery and Electrical System Diagnostic Tester



See page 4 for ESI[truck] tools.

### RECEIVE A FREE ACCESSORY WHEN YOU BUY AN OTC LIFT

Eligible Presses	Free Accessory
Buy 5130	558382 or 561949
Buy 1590	572913

### BUNDLE & SAVE SAVE UP TO 18% WHEN YOU PURCHASE 2017P1-3FST

KIT INCLUDES:  
OTC 6599,  
6703 AND  
6554



### FREE ACCESSORY WITH PURCHASE OF SELECT OTC PRESSES

Eligible Presses	Free Accessory
Buy 1823A or 1824A	1879
Buy 1825	1880
Buy 1826 or 1826A	1881
Buy 1850 or 1851	1882

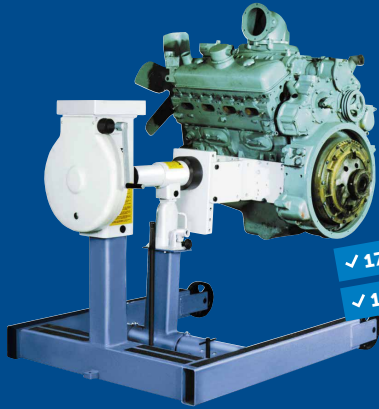
### Hendrickson Front Suspension Bushing Tool Kit

See page 12

NEW



## BUY A 1750 OR 1750A ENGINE STAND AND ADAPTER\*, GET \$150 OR \$200 REBATE



✓ 1750 + ADAPTER\* = \$150 REBATE  
 ✓ 1750A + ADAPTER\* = \$200 REBATE

For a list of eligible Adapters visit [otctools.com/promotions](http://otctools.com/promotions)

See page 13 for Engine Stands

New year, new tool deals. All promotions valid January 1, 2017 through March 31, 2017. Redeem at [Boschrebates.com](http://Boschrebates.com). Dated proof of purchase required. Must redeem by April 30, 2017.



## Win an Indianapolis stock car race experience



Enter to win at [BoschPerformance.com/sweepstakes](http://BoschPerformance.com/sweepstakes)

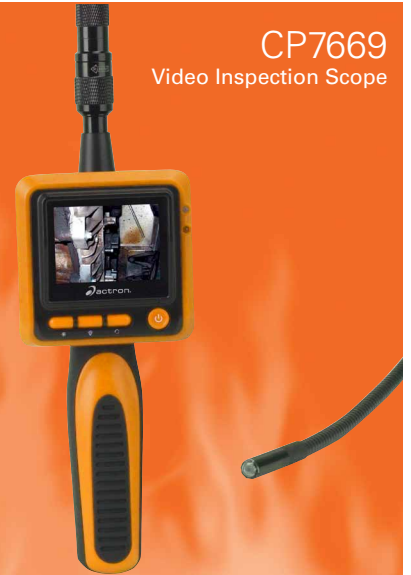
## Buy CP9690 or CP9680 & receive a CP7852



## Buy CP7669 and CP7668, get \$20 back

CP7669  
Video Inspection Scope

CP7668  
9 mm dual plane camera



## OTC ENCORE

**3893**  
Encore, OBD II cable, USB cable, power adapter, and hard carrying case.

**3893-LTW**  
**Encore 1-Year Subscription & Lifetime Hardware Warranty**  
Encore Domestic, Asian and European Software 1-year subscription kit provides a year of frequent and valuable updates for new coverage, coverage enhancements, repair information, application improvements and includes the Diagnostics for Life\* lifetime hardware warranty.

Diagnostics for Life\* lifetime hardware warranty means OTC supports your Encore for as long as you own it, as long as you maintain an active diagnostics subscription.

The "hardware warranty" applies to the Encore scan tool tablet only. Accessories, such as cables, adapters, batteries and case remain the 90 Day factory warranty from purchase.

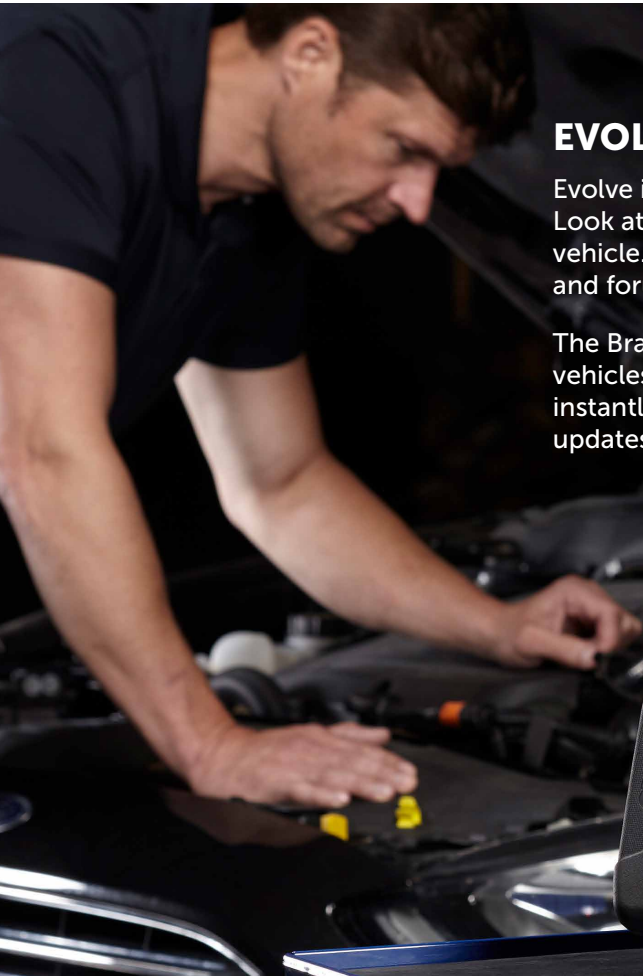


3893

✓ LIFETIME WARRANTY\*  
 ✓ FASTEST TO FIX  
 ✓ EXPANDED COVERAGE



3893-LTW



## EVOLVING DIAGNOSTIC SOLUTIONS

Evolve is a professional diagnostics repair suite from OTC and Bosch. Look at codes, PIDs, data sets and likely repairs without ever leaving the vehicle. Evolve connects directly to Identifix, iATN and other repair networks and forums to help you fix faster at the vehicle\*.

The Bravo 3.0 software is easy to use and fast. AutoID most CAN vehicles in less than 5 seconds. Access on-tool repair information almost instantly to test and fix more vehicles faster. Includes one year of diagnostic updates, giving you more coverage, tests and repairs.



**NEW**

## EXCLUSIVE ON-TOOL WIRING DIAGRAMS

Exclusive on-tool wiring diagrams for most vehicles 1986 and newer help you locate trouble components to test or replace.

### Wireless vehicle communication

Dual WiFi architecture keeps you connected to the vehicle and shop Internet connection to access troubleshooting and repair info.

### J2534 reprogramming capable\*\*

The included wireless VCI doubles as a powerful J2534 pass-through device, expanding your shop's ability to fully service and reprogram customer vehicles.

### Identifix on-tool

Direct-linking to Identifix for most diagnostic codes. OTC automatically transfers YMME to help you diagnose and fix with accuracy and confidence.

\* Must have active subscription status with Identifix or IATN.

\*\* Compliant with top 6 manufacturers. Reprogramming requires additional Windows-based PC and OEM software, purchased separately.



3896

## 3896 EVOLVE DIAGNOSTICS

Kit includes:

- Rugged 10" shop-tested scan tool
- Wireless VCI with J2534 reprogramming capabilities
- Bravo 3.0 software powered by Bosch with exclusive on-tool wiring diagrams
- Charging / docking station with AC adapter
- Padded, protective storage and carry bag
- 5' OBD II cable
- USB cable
- 60-day Identifix Direct-Hit free trial

Made in USA with Globally Sourced Components

Available now –  
**13,000 confirmed  
HD diagnostic fixes**

New ESI[repair] subscription service with 13,000 trouble code fixes.

Free trial for current tool owners.  
Confirmed fixes based on module, code and truck configuration.

Visit [boschdiagnostics.com/pro](http://boschdiagnostics.com/pro) to learn more.

## ESI[Truck] HD Diagnostics

### Unmatched Coverage and Repair Information at the Truck

The most complete diagnostic coverage for multibrand heavy-duty trucks and engines, performing special tests and parameter reset capabilities.

### NEW REPAIR INFORMATION SUBSCRIPTION SERVICE

ESI[repair] subscription service for ESI[truck] includes 13,000 experienced based fixes. The tool includes fixes specific to trouble codes and symptoms with repair information viewed while still in diagnostic mode.

### Truck COVERAGE

Trucks: Freightliner, International, Kenworth, Mack, Volvo, Peterbilt, Sterling, Westernstar, MD Trucks (Freightliner Sprinter Van, Isuzu, GM and Ford).  
Trailer ABS Controllers; Allison & Eaton Transmissions.

### ENGINE COVERAGE

Heavy-duty engines – Caterpillar, Cummins, Detroit Diesel-MBE, Deutz, Mack, MTU, Navistar, PACCAR, Perkins and Volvo. Medium and light duty engine software included.



**3824**

### WINDOWS 7 TABLET SCAN TOOL

Includes VCI, 6 pin and 9 pin cables

**3824BSC**

### SCAN KIT

- Use with your shop PC
- Includes Bosch diagnostic software, VCI, 6 and 9 pin cables.

**3824-06**

### Bosch ESI[truck] Trailer Adapter

7-pin PLC adapter for trailer ABS diagnostics

- J2497 Power Line Carrier (PLC) communication compatible
- Allows direct connection to trailer
- Works with tractor present or without the tractor present
  - External power supply is necessary without tractor
- Bosch ESI[truck] trailer ABS coverage for Bendix, Haldex, Meritor Wabco and Wabash systems

**3824-08**

### Bosch ESI[truck] License Renewal 12-Month Security Card



**3824-08R**

### Bosch ESI[truck] Repair Information Subscription 12-Month Security Card



**3824**



**3824-06**



Watch the tool used at a local shop.



**3840F**

### Automotive Scope

The exclusive vehicle-specific database in the 3840F contains information for most domestic vehicles as well as many imports. The Scope also recommends the appropriate test procedures for fast, accurate repairs. Visible on the screen are diagrams showing pin numbers and wire colors for both the PCM and the component connector.



**3415**

### CAN Test Box Breakout Box for Scan Tools

- Connects between Diagnostic Link Connector (DLC).
- Connect leads for increased diagnosis, analysis, and monitoring.
- Useful Functions
  - LEDs display signal detection – Flashing LED's
  - Magnifies DLC
  - Displays battery voltage with warning

## TPMS Service Made Easy With OTC

The expected lifespan of tire pressure monitoring system (TPMS) sensors is between 7 and 10 years, meaning many vehicles coming into your shop are already in need or going to be in need of replacement sensors. Use this opportunity to educate your customers on the importance of the TPMS sensors – safety, vehicle awareness and peace of mind.

OTC recently brought a new standalone OBDII TPMS tool to market with basic diagnostics capabilities. Think of it as a TPMS tool with a built-in enhanced code reader. Plug the dongle in to the OBD II port and scan each tire's TPMS sensor. The vehicle will learn and register the sensor position and PSI almost instantly, allowing the relearn procedure to take less than 10 minutes.



**3838**

### Standalone TPMS Tool with Bluetooth OBD II

The OTC 3838 is both a sensor activation and diagnostic device that features a wireless OBD II module for TPMS sensor registration. The tool works with all OEM and aftermarket sensors.

- Exclusive wireless OBD-II module for TPMS sensor registration.
- Standalone TPMS tool with activation, relearn and diagnostic capabilities.
- Three years of software updates included.
- Allows for cloning of universal sensors.
- KEY FOB signal test and infrared print capabilities.



## OVER 26 MILLION VERIFIED FIXES, COLOR SCREEN ADDED EUROPEAN COVERAGE & MORE!

**3210**

**NEW**



### OBD II, CAN, ABS & AIRBAG

**EPB BRAKE CALIPER RESETS, BRAKE BLEED TESTS, BMW BRAKE ZEROING TEST**

**STEERING ANGLE RESETS**

**POWERTRAIN & ABS DATASTREAM**

### ABS COVERAGE

1996-2012 Audi, BMW, Jaguar, Land Rover, Mercedes Benz, Smart, Volkswagen, Volvo

1996-2013 GM, Ford and Chrysler

1996-2013 Toyota, Honda, Hyundai and Nissan

### AIRBAG (SRS) COVERAGE

1996-2013 GM, Ford and Chrysler

1996-2013 Toyota, Honda, Hyundai and Nissan

### ENHANCED CODE REQUEST

For GM, Ford, Chrysler, Honda, Hyundai, Nissan, Toyota, Audi, BMW, Jaguar, Land Rover, Mercedes Benz, Smart, Volkswagen, Volvo vehicles

### BATTERY AND OIL LIGHT RESETS

Reset battery life for late model BMW, Ford F-Series trucks and Mini Coopers. Reset oil life to 100% and turn off the change oil light.

### MPG FUEL MILEAGE CALCULATION

Displays Instant MPG, Average MPG, Elapsed Time, Distance (MI), Fuel Used (GAL) and Average Speed (MPH) with the ability to alternate between English and Metric units on screen.

### CODECONNECT® WITH OVER 26 MILLION TOP REPORTED FIXES\*

The most probable solution to the vehicle problem that is specific to code and the vehicle year, make, model, engine.

**3208**



### OBD II & ABS Scan Tool

- Read ABS code and definitions for most 1996-2013 GM, Ford, Chrysler, Honda, Hyundai, Nissan and Toyota vehicles.
- View live engine data.
- Read/erase hot keys.
- View all available I/M Monitors and freeze frame data.
- Automatically reads DTC's (Diagnostic Trouble Codes) when connected for fast diagnostics.
- Works on all 1996 and newer vehicles (OBD II & CAN).

**3209**



### Trilingual

### OBD II, ABS & Airbag Scan Tool

- Color screen.
- ABS & Airbag code and definitions for most 1996-2013 GM, Ford, Chrysler, Honda, Hyundai, Nissan and Toyota vehicles.
- Battery, Alternator & Charging System Monitor.
- Graph, record and playback live date.
- Full manufacturer specific code definitions.
- Updateable – USB update cable included.
- Live engine data.
- AutoID® – Automatically selects the vehicle on most 2000 and newer vehicles.
- View all OBD II global data including Modes 5, 6 & 8.

## Test battery voltage and CCA in less than 10 seconds

Quickly test charging and starting system health without disconnecting leads



3200

Watch the tool used at a local shop on a 2000 Celica here:



- Download the OTC3200 app from the Google Play or iTunes store. View battery test data by scanning the device QR code\*. Instructions included on testing device.
- All light duty applications - test 6V, 8V and 12V lead acid and AGM batteries
- Diagnose bad batteries faster – an internal 9V battery allows testing for deeply discharged batteries
- Share your test results – print, save or email a customer friendly color report
- Confidently recommend repairs – use your smart phone or tablet camera to embed photos into customer reports
- Sync feature sends information to all phones used in your shop so every tech can access reports by vehicle.

\*Smart devices paired with the tester must have auto-focusing rear-facing camera to meet full requirements



## 3183 OTC Digital Battery Tester

Speed. Accuracy. Reliability. These are the cornerstones behind the technology in our digital battery testers. Test 12-volt batteries (125–1400 CCAs) and analyze by measuring multiple parameters within the battery to deliver accurate results. A live voltmeter allows easy starting/charging system testing. Its bright, 4-digit LED display indicates battery status, voltage, and available CCAs. Compensates for cold temperatures.



## 4639 Battery Terminal Service Kit

Seven favorite battery tools, housed in a rugged, vinyl-coated fabric pouch. Kit includes: a heavy-duty battery terminal puller, 4-way battery post cleaner and reamer, angled battery nut pliers, GM 5/16" battery terminal ratchet wrench, extra long 5/16" terminal ratchet wrench, 10 mm battery terminal ratchet wrench, and side terminal battery brush.



3176

## Smart Battery Charger and Maintainer

Utilizes switching technology which helps restore the batteries that are slightly sulfated. Switches to float mode after the battery is completely charged.

- Maintains the battery charge level during vehicle programming.
- Charges deep discharged batteries in about 12 hours.
- Application: Lead Acid (FLA, AGM, GEL).
- Maintains the battery charge level if the vehicle or the battery needs to be stored for an extended period of time.
- Switches to float mode after the battery is completely charged.
- Utilizes switching technology which helps restore the batteries that are slightly sulfated.
- Easy to read LED lights to show the status of charging and battery condition.



3177A

## Professional Memory Saver

- OBD II cable for fast connection to the vehicle
- Cigarette lighter adapter for use with vehicles that do not have an OBD II connector
- LED lights confirm circuit between the cigarette lighter/ power outlet and the vehicle's battery with the ignition on or off
- State of charge indicator identifies when the memory saver needs to be plugged in for recharge
- Resettable fuse protects against excessive current draw through either the OBD II connector or the vehicles cigarette lighter
- High capacity, rechargeable sealed lead acid battery for extended service between charges

## HD Battery Testers



## 3167 Battery & Electrical System Diagnostic Tester

- Digital circuitry precisely controls battery test loads to accurately determine battery conditions.
- Tests both flooded lead acid and AGM/gell cell batteries accurately—down to 1 volt state of charge.
- Tests vehicle starting and charging systems with minimal user interaction.
- Tests all 6- & 12-volt batteries with a 50-2000 CCA operating range.
- Scales: CCA, CA, AHR, MCA, JIS, DIN.
- Removable/auto-sensing leads. (3' leads included in kits, optional 10' leads available.)
- Optional amp clamps for current drain tests and starting/charging measurements.
- Includes SABRE HP, 3' test leads, side-post terminal adapters, instruction manual, and molded-plastic carrying case.

## OEM tools



F00E9016307HH

## The Ford Vehicle Communication Module II (VCM II)

- Authentic OEM diagnostics for Ford, Lincoln and Mercury Vehicles.
- Customer Flight Recorder (CFR) functionality with an optional pendant cable.
- Four LED indicators and signaling device providing technician with continuous visual as well as audible operating status.
- Enhanced 802.11 wireless that minimizes dependencies on service department wireless capability infrastructure.

### F00E9016297H\*

Includes VCM II, VCM to Laptop cable, USB wireless cards, and DLC cable.

### F00E9016307H\*

Includes all contents of F00E9016297HH plus CFR kit.

\*Software license sold separately.

Ford and VCM II are used under license from Ford Motor Company.

### F00E9009777H

## Tech 2 Pro Optima

The only authentic General Motors Tech 2 scan tool with full, dealer-level diagnostics. Includes preloaded software that doesn't expire.



## Genisys EVO® Software

### 3421-152

## 2015 Super Bundle Kit

- Everything needed to update a Genisys EVO
- Includes 2015 Domestic/Asian, 2014 Euro. and preloaded System 5.0 memory card



### 3421-153

## 2015 Software Loyalty Kit

- Designed for customers who already have System 4.0 and newer.
- Includes 2015 Domestic/Asian & 2014 Euro.



### 3421-154

## 2015 System 5.0 4GB Memory Expansion Kit

- Pre-loaded with 2015 application software
- New applications require a separate purchase



## Encore/Genisys Touch HD



### 3895-07

## OTC Heavy-Duty Standard

- Class 4 - 8 HD Standard truck Coverage
- Read / erase codes and view live engine data



### 3895-08

## OTC Genisys Touch 12 Month Software Subscription

Genisys Touch Domestic, Asian and European Software 12 month subscription kit provides a year of frequent and valuable updates for new coverage, coverage enhancements, repair information and application improvements.

### 3834T

## OTC TPR Activation Tool VEHICLE COVERAGE THROUGH 2016

- Lower cost kit for use with the Genisys Touch scan tool or as a stand alone tool.
- Works on vehicle TPMS sensors through 2016.
- Bright graphic display and simple navigation buttons enable vehicle selection for fast activation.
- Automatically adjusts activation output power to eliminate cross activation of near sensors.
- Tool includes a 6 month update subscription from [www.tpmsupdates.com](http://www.tpmsupdates.com)



### OTC Puller kits

**5 lb. Hammer in Polished Chrome Finish.**



**4579**

#### 9-Way Slide Hammer Puller Set

- Pulls flange-type rear axles and most front-wheel drive hubs.
- Internal and external jaws provide a variety of combinations to pull bearings, gears and seals.
- Two- and three-way cross blocks and cone provide the perfect jaw configuration for most jobs.
- Set also includes a grip wrench adapter and a dent puller attachment for sheet metal or other unique pulling requirements.
- Designed for use with other OTC 5/8"-18 thread slide hammer attachments.
- Packaged in blow-molded case.



**4532**

#### 7-Ton Multi Purpose Bearing & Puller set

- Features a classic "H" style puller block accommodating 7-11" application spread.
- Includes 2 sets of forged jaws for a pulling reach range of 5" to 9" – tempered for heavy-duty applications. (Jaws from OTC's 4534 are interchangeable) Two forcing screws are included for short and long pulls.
- Multi applications include heavy-duty pinion bearings, side bearings, alternators, generators, power steering and crankshaft pulleys, timing gears and harmonic balancers.
- Deep set transmission gears and A/C clutches. Roller gears on tracked vehicles, locking collars on pivot shafts.



**4534**

#### OTC Multipurpose Bearing and Pulley Puller Set

- For a wide range of pulling jobs, including: bearings, alternators, generators, power steering and crankshaft pulleys, timing gears, and harmonic balancers.
- Set includes drop-forged components, which can be used in a variety of combinations. Contents of Set: 2 – Forcing Screws (Live Center): 3/4"-16 x 6-11/16" and 3/4"-16 x 5" 2 – Cross-bar Yokes: 3 pin-hole @ 3-1/4" to 5-1/2", 2 pin-hole @ 2-3/8" to 3-3/8" 2 – Clamp Bolts 3 – Pairs of Puller Jaws: 1-3/8" Max, 1-5/8" Max, 1-3/4" Max 1 – Pair of Jaw Pins with Ball Spring 3 – Pairs of Capped Bolts
- Spread: 3" to 5", Reach: 1" to 2-1/4"
- Housed in a blow-molded plastic storage case.



**4518**

#### 5-Bar-Type Puller/Bearing Separator Set

- This combination set includes our two most popular bearing "splitters" (2" and 3"), four sets of hex push-puller legs and a bar-type puller head with a 9/16" forcing screw. Separator tools are used with bar puller and legs for a wide variety of pulling jobs.
- The 5" puller cross-bar with a 6-1/4" forcing screw or each of the bearing separators may also be used separately or in combination with other pullers or tools.
- A blow-molded plastic storage case keeps set contents organized and protected from loss.



**4527**

#### 5-Ton Single Pressure Beam Bearing Splitter Set

- Single point of adjustment allows quick attachment of splitter to the application.
- Pressure beam provides the ultimate in secure gripping surface.
- Push Puller is thread matched to the splitter.
- Interchangeable legs shorten or lengthen the range of pull.
- Designed of high quality tool grade materials for a lifetime of use.
- For use on most bushing or bearing jobs up to 3" in diameter.



**4526**

#### Heavy-Duty Single Pressure Beam Bearing Splitter Set

- Single point of adjustment allows quick attachment of splitter to the application.
- Pressure beam provides the ultimate in secure gripping surface.
- Push Puller is thread matched to the splitter.
- Interchangeable legs shorten or lengthen the range of pull.
- Designed of high quality tool grade materials for a lifetime of use.
- For use on most bushing or bearing jobs up to 4" in diameter.



**4517**

#### 7-Ton Bar-Type Puller/Bearing Separator Set

- Includes a Bearing Splitter with 4" capacity, two sets of hex push puller legs, a 8" bar type puller head mated with a custom thread forcing screw.
- Now service and maintenance professionals have a Puller/Bearing set for tough jobs, up to 7-tons, larger applications, and greater reach 8" to 16".
- As a stand alone puller/bearing splitter set or as a compliment to the 4518 version, the 4517 7-Ton Puller/Bearing Separator Set gives your maintenance/service shop the expanded capability to keep more business in house.

**1027**

#### 5-Ton Grip-O-Matic Puller

- Remove and install parts for fast, effective repairs. The puller is forged from quality steel, heat treated, and subjected to rigorous tests which exceed their rated capacity.
- 5-Ton, Long 2/3-Jaw (Reversible Jaws)
- Max. Reach 5-1/2" Max. Spread 7"



**927**

#### 10-Ton Push Puller

- Removes and installs press-fit parts. Max. reach is 8-1/4" with spread of 2-1/8" to 7-1/4".



**4581**

#### Blind Hole Bearing Puller Set

- For pulling jobs requiring an internal pull.
- Set includes four collets, which fit a wide range of applications. Select the appropriate sized collet by comparing it with the application. Insert the collet, expand it to fit the hole, then attach the slide hammer.
- Four collet sizes: 7/16" to 1/2", 9/16" to 11/16", 5/8" to 1", and 1" to 1-1/4".
- Set includes a 2-1/2 lb. slide hammer with a T-handle.
- Housed in a blow-molded plastic storage case.

### 1060-HYD

#### 10-Ton Hydraulic Puller Kit

The OTC 1060-HYD delivers 10 tons of force for industrial bearing service. Engineered for a maximum spread of 17" and maximum reach of 15". OTC Grip-O-Matic® Pullers are designed with adjustable jaw positions in both 2 and 3 jaw configurations. Two pushing adapters are designed to fit the cylinder ram and act as 4.5" and 8.5" forcing screws.

- 10-Ton 2/3 Jaw Grip-O-Matic Puller Chassis.
- 10-Ton Single Cylinder Hydraulic Ram with 10-Ton Hand Operated Hydraulic Pump.
- Includes 2 Pushing Adapters (4-1/2" and 8-1/2").
- Includes 6 Piece Shaft Adapter Set.
- Ultra Heavy Duty Rolling Storage Case.
- Comes with a Quick Link Connector for suspending pulling from lifting equipment.

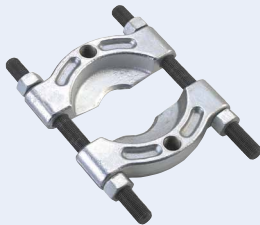


### 1123

#### Bearing Splitter

Features "knife-like" edges which are easily placed behind the part to secure a gripping surface, even when clearances are extremely limited.

- Max. Spread 4-5/8"
- Min. Spread 1/2"
- Thread of tapped holes in adapter 5/8"-18.
- Distance between adjusting screws 4-3/8".



### 7311A

#### Pitman Arm Puller

- Designed for the toughest Pitman arm jobs.
- Adjustable and have rugged forged jaws shaped to fit the job. Two clamp bolts lock the jaws on the Pitman arm, ensuring a solid grip.
- Pitman arm puller for cars and light trucks to 3/4 ton. Max jaw spread: 2-1/8".



8330



8330-RP

### 8330

#### Resurfacing Grinder – Medium

- Cleans dirt, rust, and corrosion from many surfaces including hubs, rotors, inside wheel edges, and other large surface areas.
- Can resurface up to 400 hubs before replacement of media is required.
- Recommended for up to 1500 RPM.

### 8330-RP

Two replacement discs for 8330.

### 7485

#### Locking Collar Rack Wrench

- Ideal for steering service, wheel alignment, strut cartridge, small dia. exhaust, and general pipe adjustment.
- Unique, two-piece design wraps around steering components.
- Permits service or adjustment of steering components without having to remove end.
- For use with diameters of 1" to 1-7/8" (25.4 mm to 47.625 mm).
- Eccentric shape of cam automatically adjusts to component diameter.
- 1/2" Sq.Dr. for maximum power with Ratchets, Extensions, and Breaker Bars.



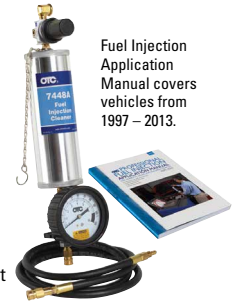
## Fuel Injection Kits

### 7448A

#### Canister-type Fuel Injector Cleaner

Simply and completely clean a vehicle's fuel system with the 7448A Fuel Injector Cleaner.

With the addition of a quick-connect fitting, the removable hose can be thoroughly cleaned for storage and extending the life of the product. An included blowout fitting adapts to shop air supply to remove residual cleaner from hose lines.



Fuel Injection Application Manual covers vehicles from 1997 – 2013.

### 6550PRO

#### Pro Master Fuel Injection Service Kit

Covers 100% of vehicles sold in North America '97-'13. Perform fuel pressure testing, diagnose weak fuel pumps or restricted filters, test for fuel flow and perform leak-down tests. Use to clean injectors and intake systems. Kit includes:

- 0 – 100 PSI Fuel Pressure Gauge.
- 47 of the popular OTC fuel injection adapters, each equipped with a quick-connect Schrader valve.
- '97 – '13 Fuel Injection Service Application Manual.
- Replacement seal kit also included.



### 4480

#### Basic Fuel Injection Service Kit

- Performs running, residual, rail and flow rate pressure tests.
- Kit includes adapters, hoses and fittings to test fuel injection systems.
- Kit includes two popular adapters for import vehicles as well as the GM TBI adapter.
- Professional dual scale gauge reads 0-100 PSI and 0-700 kPa with relief valve, fuel discharge hose and rubber boot.
- Packaged in blow molded carrying case.

## 4 PIECE ROLLING HEAD PRYBAR SET

INCLUDES A FREE PAIR OF OTC SMARTTECH WORK GLOVES (L)

### 4 PC ROLLING HEAD PRYBAR SET

### 7176

Includes 6", 12", 16" and 21" lengths for a variety of duties - small - large and in between. Heated to cherry red, upset, then forged and swaged processing creates the tool, then our special thermal treating process locks in the strength you count on. Guaranteed for life.



### 6554

#### Fuel / AC Line Disconnect Kit

- Topside disconnects for AC and Fuel lines.
- Clips, disc, and scissor styles for broad applications.
- Hi-visibility line plugs included.



**NEW**

**4484**

### Weather Pack Ratcheting Crimper Kit

Manage environmentally-sealed connection systems with the OTC 4484 Weather Pack Crimper Kit. Weather pack connection systems are designed to protect against exposure to heat, moisture and contaminants. Includes:

- Two interchangeable crimping dies coverage wire range AWG 22 / 20-18 (DIN: 0.35 / 0.5-0.8mm) and AWG 16-14 / 12 (DIN: 1.0-2.0 / 3.0mm).
- Dies are magnetically secure and easily changed.
- Instructions clearly illustrate how to create a weather-proof seal.
- Connections found on motorcycles, Class 7 - 8 tractors, automobiles and more.



**NEW**

**2497**

### 3 Piece Push Pin/Body Clip Pliers Set

Remove plastic body fasteners and clips faster in nearly any location. Features:

- Three pairs of pliers in 45°, 90° and straight.
- Unique design lifts center pin and removes plastic rivets and fasteners without damage.
- Reach in wheel wells, next to firewalls, behind bumpers and dashboards.
- Eliminates breaking plastic retention clips.
- Covered by OTC's Lifetime Warranty.

**BEST SELLER**



**7402**

### Universal Outside Thread Chaser

- Quickly restore threads to near new condition without expensive thread cutting equipment.
- Replaceable V-Pads and dies.
- Use for 1-1/4" to 5" O.D.
- INCLUDES standard die set - No.216884 (six dies – 4,5,6,7,7-1/2,8,9,10,11,11-1/2,12,14,16,18,20 and 24 threads per inch)
- Metric size dies available - No.202817 (six dies with metric pitches – 1.0, 1.25, 1.5, 1.75, 2.0, 2.5, 3.0, 3.5, 4.0mm ) - Must be purchased separately

## OTC Wire Service Tools

**4470**

### Butane-Power Flameless MicroTorch

- Cordless 650° (1250°F) flameless heat.
- Refillable fuel cell uses standard butane lighter fluid (butane NOT included).



**4472**

### Cordless Solder Tool Kit

Includes: Soldering iron, conical tip 2.4 mm, chisel tip 2.4 mm, hot knife tip, deflector tip, sponge, wrench, and soldering wire.



**4460**

### 2-Piece Electrical Connector Separator Tool



**4461**

### Terminal Release Tool Set



**1/4" & 3/8" Cable Cutters**

**4476**

1/4" cable cutter.

**4477**

3/8" cable cutter.



**4467**

### Automatic Wire Stripper

- Comes with adjustable depth gauge (8mm to 12mm).



**4468**

### 9" Self Adjusting Wire Stripper

- Strips insulating sheathing from wires ranging from 10 ga. to 22 ga.



**4462**

### Wire Loom Threading Kit

The 4462 Wire Loom Threading Kit from OTC is a clever grouping of wire fishing tools for the automotive technician. Whether general wiring R&R - or adding Gauge Packs, Sound Systems, Vehicle Security and Camera Systems, these tools simplify placing the wiring within the protection of existing wiring looms, without cutting tape or zip ties and without damage to other wires.

There are 3 wire pulling tools in 15", 10" and 5.5" lengths for common automotive applications, the grommet insertion tool allows the wire to be captured within the tool to hold once it is placed, placed so you can grab from the opposite side of the firewall - and the pigtail tool assists when building a new harness on the workbench.

**5912**

### Crimpwell™ Angled Crimping Pliers

- Universal crimping design accommodates soft wire – solid or stranded – 10-22 AWG.
- Cutting feature included for quicker preparation.
- 9" (228mm) in length, with protective grips to increase leverage and secure crimp.



**5950A**

### CrimPro™ 4-in-1 Angled Wire Tool

- Compact 7-inch design.
- Gripping nose.
- Crimper, 12-20 AWG insulated & non-insulated wire.
- Stripper – strips 12-20 AWG wire.
- Cutter – ability to make cuts both above and below pivot.



**5950S**

### CrimPro™ 4-in-1 Wire Tool

- Compact 7-inch design.
- Gripping nose.
- Crimper, 12-20 AWG insulated & non-insulated wire.
- Stripper – strips 12-20 AWG wire.
- Cutter – ability to make cuts both above and below pivot.



**5947**

### Butt Connector Kit (240 Piece)

Two styles - insulated and non-insulated. Three sizes of each style: 12-10 AWG, 16-14 AWG and 22-18 AWG.



**4813**

### Heat Shrink Tubing Set (171 Piece)

Protection and insulation for solder connections and components. 2 to 1 shrink ratio with flame or heat gun.



**4814**

### Waterproof Heat Shrink Tubing Set (106 Piece)

Waterproof protection and insulation on solder connections and components. Adhesive lined inner wall to seal out moisture. 3 to 1 shrink ratio with flame or heat gun.







**6613**

### Variable Pin Spanner Wrench

- Universal design fits many different types of pulleys having slots or holes, including camshaft pulleys and crankshaft pulleys.
- Wrench is adjustable from 1-1/4 inch to 5 inches; works with a 1/2 inch ratchet or breaker bar.

Set Includes:

526908-1 – 3.5 mm pin	526908-2 – 4 mm pin
526908-3 – 4.5 mm pin	526908-4 – 5 mm pin
526908-5 – 6 mm pin	526908-6 – 7 mm pin
526908-7 – 10 mm pin	526908-8 – Handle



**7196**

### Crank & Cam Seal Service Kit

- Removes and installs camshaft and crankshaft seals on cars, trucks, vans and SUVs without damage.
- Includes a puller coupled with specialized puller legs that hook the seal for quick and easy removal.
- The interchangeable seal install adapters are designed for use with the cam or crank bolt. Kit services seal sizes of 21.5mm to 64mm.

**6673**

### Universal Belt Tension Gauge

- Belt tension gauges are used to check drive belt tension on drive belts to ensure maximum belt and bearing life.
- Scale reads 30–180 lbs.



**4531**

### Harmonic Balancer Puller/Installer Set

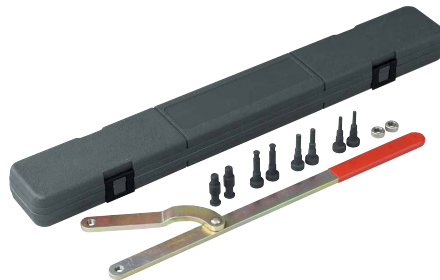
- For easy removal of most harmonic balancers and drive pulleys which are press-fitted onto the crankshaft. A bearing-centered circular 2/3-way puller flange and an assortment of metric and fractional bolts and adapters provide wide coverage.
- A heavy-duty, 3/4" dia. forcing screw is internally threaded to fit the eight adapters to install harmonic balancers. Adapter sizes included: M16 x 2.0, M14 x 1.5, M12 x 1.5, 3/4" - 16, 5/8" - 18, 9/16" - 18, 1/2" - 20 and 7/16" - 20.
- A blow-molded plastic storage case keeps set contents organized and protected.



**4645**

### Serpentine Belt Tool

- Fits tensioner pulleys with 13 mm–16 mm, 18 mm hex or 3/8" and 1/2" square drives.
- For hard to access tensioners; there are 13 mm and 15 mm 12-point wrenches built into the handle.
- 13 mm, 14 mm and 15 mm crows foot wrenches also included.



**4754**

### Universal Pulley Holder

- Universal design fits many different size pulleys having slots or holes, such as camshaft pulleys or crankshaft pulleys.
- Wrench is adjustable from 1-1/2" to 8-5/8"; four different size step pins are interchangeable.
- Long handle enables technician to easily hold the pulley when tightening or loosening retaining bolts.

**7654A**

### Serpentine Belt Installation Tool

- Durable tool provides extra control and reach during serpentine belt installation.
- Works equally well on V-belts and timing belts.
- Three-pin design for immediate push/pull capacity.
- Handle gives technician twisting control to install belts in confined, hard-to-reach areas.

## Pressure Testers



**5606**

### Compression Tester Kit

Designed for complete compression testing on gasoline engines, including domestic, imports, motorcycles, marine, and small engines. Unique problem solving features for today's limited space engine compartments.



**5605**

### Deluxe Compression Tester Kit

Complete with standard and specialty adapters, this deluxe kit offers a complete package for compression testing on gasoline engines. Kit includes the deep well connector used on recessed plug well style heads and the Ford engine adapter using 16 mm thread plugs. Moloruntist quod



**5609**

### Cylinder Leakage Tester Kit

Quickly diagnose internal engine problems such as bad rings, valves and leaking head gaskets. Kit come complete with adapters for most applications.



**5610**

### Transmission/Engine Oil Pressure Kit

This professional kit can be used for domestic and import applications. High and low pressure gauges make this kit useful for both transmission and engine work. Kit comes complete with adapter for most applications. Designed to be used for both static and on road testing.



### 6786 Oil Filter Cartridge Set

- Fits today's oil filter cartridge style filter applications.
- Short socket style allows for proper clearance when removing the filter element.
- 24mm – Cadillac, BMW.
- 27mm – Cadillac, Mercedes, Buick, Saturn, Saab, Smart, VW.
- 29mm – Dodge.
- 32mm – Saturn, Saab, various GM.
- 35/36mm – Ford, Mini Cooper, Mercedes, BMW, VW/Audi, Mack Truck.
- 38mm – small Diesel engine applications.



### Adjustable Oil Filter Pliers Set

- Forged jaws with sure-grip teeth grab the filter for easy removal.
- Slip-joint ratchet and lock mechanism allows a secure grip on filter diameters of 2-1/4" to 7" (57 mm to 178 mm).

**4560**  
Small adjustable oil filter pliers. Pliers is 13-1/2" long; fits filters ranging from 2-1/4" to 5" (57 mm to 127 mm) in diameter.

**4561**  
Large adjustable oil filter pliers. Pliers is 18" long; fits filters ranging from 3-3/4" to 7" (95 mm to 178 mm) in diameter.

**4562**  
Adjustable Oil Filter Pliers Set. Includes both the No. 4560 and No. 4561 listed above.



### 4440 Heavy-Duty 3 Leg Filter Wrench Standard

- Self gripping design for true universal fit from 3" to 4-3/4".
- Heavy duty knurled leg design for extra grip and strength.
- 1/2" square drive with 21mm hex option.



### 4582 Jointed Jaw Standard Filter Pliers

- Jointed jaws rotate 180 degrees providing access where standard pliers do not.
- Slip joint handle design provides a range from 2-1/4" to 4-3/4".
- Jaw teeth and cushioned handles provide maximum gripping power for slip free operation.



### 4584 Jointed Jaw Large Filter Pliers

- Jointed jaws rotate 180 degrees providing access where standard pliers do not.
- Slip joint handle design provides a range from 3-1/8" to 7-1/2".
- Jaw teeth and cushioned handles provide maximum gripping power for slip free operation.



### Swivel Handle Oil Filter Wrenches

- Fit filters ranging from 2-1/2" to 4-3/8" (73 mm to 111 mm) in diameter.
- Feature a 1" wide stainless steel band for positive grip on the filter; swivel handle makes it easy to turn filters in hard-to-reach areas.

**4565**  
Swivel handle oil filter wrench. Fits filters ranging from 2-1/2" to 3-1/8" (64 mm to 80 mm) in diameter.

**4566**  
Swivel handle oil filter wrench. Fits filters ranging from 3-1/8" to 3-3/4" (80 mm to 95 mm) in diameter.

**4567**  
Swivel handle oil filter wrench. Fits filters ranging from 3-3/4" to 4-3/8" (95 mm to 111 mm) in diameter.



### 4441 Heavy-Duty 3 Leg Filter Wrench Large

- Self gripping design for true universal fit from 4" to 6 1/2".
- Heavy duty knurled leg design for extra grip and strength.
- 1/2" square drive.



### 6909 Set of Five Oil Filter Sockets with Holder

- Magnetic holder and 5 oil sockets includes:
- Ford /Mazda 75.6 mm, 14 Flutes.
- Hyundai /Kia 88.5 mm, 15 Flutes.
- Subaru 66.5 mm, 14 Flutes.
- Toyota Avalon/ Tundra 5.7L 65 mm, 14 Flutes.
- Toyota Tundra 4.7L 73mm, 14 Flutes.

## COOLANT SERVICE



### 7991 Cooling System Pressure Tester

Now you can pressure test the cooling system on most cars, light commercial trucks, motorcycles, and even marine applications. The tester's universal fit eliminates the need for multiple adapters.

Note: Will not work on Saturn and Kia cars or Jeep with the plastic reservoir.



### 6043 "Blast-Vac" Multipurpose Cleaning Gun

- Perfectly suited for quick and efficient cooling system flushing. Simply attach it to radiator or heater hoses and you're in business.
- Also usable in washing engines and even shop floors.
- Two simple connections: one to shop air and one to a typical water faucet.
- Creates a unique vortex air/water blast for powerful cleaning applications.
- The tool can also be used to vacuum by turning the venturi inside the gun in the opposite direction. Air flow is reversed to create a strong vacuum.

Note: While normal water pressure will handle the majority of a cooling system flush, short blasts are sometimes needed to loosen some contaminants from within the system.

### 7157

#### Locknut Socket Ford, Dodge, GM

- Services 1993–newer Ford Ranger Bronco II and Explorer with manual hubs; 1995–96 Ford F-series 1/2-ton truck and full-size Bronco with manual hubs; 1995–newer Ford F-series 3/4-ton and 1-ton trucks with manual hubs; 1959–85 Ford F-series 1/2- and 3/4-ton trucks and full-size Bronco; 1960–90 GM 1/2-ton truck and full-size Blazer/Jimmy; 1969–89 Dodge 1/2-ton truck with manual hubs; 1969–72 International 1/2-ton truck.
- 1/2" sq. drive.



2-1/4"

### 7158

#### Locknut Socket Ford, Dodge, GM

- Services 1985-1/2–95 Ford F-series H.D. 3/4- and 1-ton Dana 50 IFS of Dana 60 front axle; 1982–90 GM H.D. 3/4- and 1-ton trucks, 1994–newer Dodge Dana 60 with Cummins.
- 1/2" sq. drive.



2-1/2"

### 7269

#### Locknut Socket Ford, GM

- Services 1985–newer Ford F-series 3/4- and 1-ton trucks with Dana 80 rear axle.
- 1/2" sq. drive.



2-3/4"

### 7612

#### Locknut Socket Toyota

- 54 mm hex socket fits front wheel bearing adjusting nut of Toyota FJ, LN, and RN. Has 1/2" square drive end, permitting use of a torque wrench.
- 1/2" sq. drive.

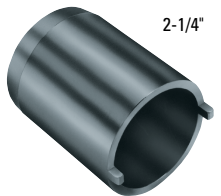


2-1/8" 54 mm

### 7698

#### Locknut Socket Isuzu, Honda, Jeep

- Services 1988–1995 Isuzu Trooper, Rodeo, Amigo, and pickup; 1989–1995 Honda Passport; Jeep J20 pickups with Dana 60 axle.
- 1/2" sq. drive.



2-1/4"



### 4542

#### 7-Piece Wheel Bearing Locknut Socket Set

- For use with 1/2" ratchet or breaker bar.
- Set contains:
  - 2-3/8" hex locknut socket
  - 2-9/16" rounded hex locknut socket
  - 2-1/2" hex locknut socket
  - 2-3/4" rounded hex locknut socket
  - 2-1/2" rounded hex locknut socket
  - 2-3/8" rounded hex locknut socket
  - 55 mm hex locknut socket

### 7795

#### Locknut Socket Ford

- Services 1995–1996 Ford F-series 1/2-ton trucks and full-size Bronco with automatic hubs.
- 1/2" sq. drive.
- Similar to Ford 205-348 (T95T-1197-A)



2-1/2"

### 7796

#### Locknut Socket Ford

- Services 1995–1998 Ford F-series 3/4- and 1-ton trucks with automatic hubs.
- 1/2" sq. drive.
- Similar to Ford 205-349 (T95T-1197-B)

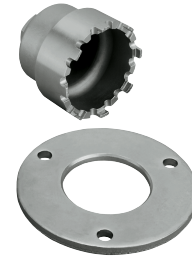


2-3/4"

### 7913

#### Locknut Socket Suzuki, Geo

- Used to remove and install locknut on 1997–2000 Suzuki Samurai and Geo Tracker front hubs.
- Similar to Kent-Moore J-42119



### 7941

#### Locknut Socket Toyota

- Specially designed to fit 4WD lock-out hubs on Toyota's 1995–2002 Tacoma, and 1996–2002 T100 and 4Runner.
- 1/2" sq. drive.
- Similar to Toyota 09318-12010-01.



2.366 center to center on pins

### 7090A

#### Locknut Socket Ford, GM

- Services 1978–84 Ford F-series H.D. 3/4- and 1-ton 4WD trucks; 1973–81 GM 3/4- and 1-ton 4WD trucks.
- 1/2" sq. drive.
- Similar to Ford 205-D001 (D78T-1197-A)



2-5/8"

### 7270A

#### Locknut Socket Ford, Dodge

- Services 1984–92 Ford Ranger and Bronco II with manual hubs; 1986–95 Ford F-series 1/2-ton truck; full size Bronco with Dana 44 front axle; 1990–93 Dodge trucks with Dana 44 automatic hubs.
- 1/2" sq. drive.
- Similar to Ford 205-244 (T86T-1197-AR)



2-3/8"

### 7217

#### Axle Nut Socket

- Designed to fit the axle nut on Chevy Top kick/Kodiak, 2003 - Newer.
- Similar to J-44275.



### 6606

#### Locknut Socket - Dodge

- Services 1994–newer Dodge 1/2-ton 4x4 pickups with Dana 44 front axle and Dana 60 axle with vacuum disconnect front axle.



1-11/16" 43 mm

### 6601

#### Locknut Socket - Ford

- Services 2003–newer Ford F-250, F-350, and F-450 Super Duty trucks with 10-1/2 inch rear axle.
- 1/2" sq. drive.
- Similar to Ford 205-448



2-3/4" O.D.

### 6694

#### Axle Seal Installer

- Designed to install the axle seal on GM Trucks with 10-1/2" ring gear.
- Similar to J-24428-A.



### 4543A

#### Locknut Socket Set – 4WD (6 piece)

- Chrome vanadium steel sockets cover most SUV and light truck applications.
- Sockets have 1/2" square drive, allowing use of a torque wrench, ratchet, or breaker bar.
- Set contains: Toyota 4-lug locknut socket, Ford 4-lug locknut socket, Dana axle 4-lug socket, 6-lug socket, 4-lug socket, and FWD front spindle puller



### 4547A

#### Axle Nut Socket Set – FWD (7 piece)

- Extra long, 1/2" drive chrome molybdenum sockets for heavy-duty use in removing/installing axle nuts.
- Use with a ratchet, breaker bar, or torque wrench.
- Contained in a blow-molded plastic storage case.
- Set contains: 29 mm, 30 mm, 32 mm, 34 mm, 35 mm, 36 mm, 38 mm FWD axle nut sockets



## 4246 Hendrickson Rear Suspension Bushing Tool Kit

Replace rusted and frozen heavy-duty rear suspension bushings faster and easier

- Patent-pending design is suspension-mounted, eliminating the need to hold the tool during operation
- Remove and install Hendrickson PRIMAAX EX, COMFORT AIR, FCCC V Ride™ Pivot and D-Pin Bushings
- Save time and effort during suspension service to get trucks back on the road faster
- Included adapters align tool with the suspension to ensure proper bushing installation and reduce the chance of misalignment and bushing damage
- Includes an OTC 4106A 25-ton high-force cylinder



- ## 4247
- Adds an OTC 2510A air/hydraulic pump to make bushing service faster and easier
  - Includes everything in the 4246 kit



## 4250 Hendrickson Adapter Kit for Front Suspensions

- Use with your 4246 or 4247 Rear Tool on select Hendrickson Front Suspensions
- Remove and install Hendrickson PACCAR Monoleaf, Navistar Monoleaf, Volvo Monoleaf suspension Pivot Bushings



## 4274 Hendrickson Front Suspension Bushing Tool Kit

Replace rusted and frozen heavy-duty front suspension bushings faster and easier

- Patent-pending design is suspension-mounted, eliminating the need to hold the tool during operation
- Remove and install Hendrickson PACCAR Monoleaf, Navistar Monoleaf, Volvo Monoleaf suspension Pivot Bushings
- Save time and effort during suspension service to get trucks back on the road faster
- Included adapters align tool with the suspension to ensure proper bushing installation and reduce the chance of misalignment and bushing damage
- Includes an OTC 4106A 25-ton high-force cylinder



- ## 4275
- Adds an OTC 2510A air/hydraulic pump to make bushing service faster and easier
  - Includes everything in the 4274 kit



## 4254 Hendrickson Adapter Kit for Rear Suspensions

- Use with your 4274 or 4275 Front Tool on select Hendrickson Rear Suspensions
- Remove and install Hendrickson PRIMAAX EX, COMFORT AIR, FCCC V Ride™ Pivot and D-Pin Bushings



## Hydraulic Flow Meters

Unparalleled accuracy in testing hydraulic oil flow circuits for vehicles and machinery. All are protected by a durable steel case. Pressure accuracy is at +/- 1.6% of full scale. Due to their standard burst disc protection system, overpressure conditions prevent spillage of hydraulic fluid. All devices accommodate bi-directional flow and are CE marked as appropriate.



## 4277 50 gpm Mechanical Hydraulic Flow Meter

- Flow Accuracy to +/- 4% of full scale
- Measures flow from 4 to 54 gpm
- Pressure up to 6000 psi
- Fluid filled analog gage that dampens vibration
- Temperatures up to 230 deg F
- Reads flow in one direction
- No batteries required
- Port is 1-5/16" -12 UN JIC Male
- 12.25" x 4.125" x 4.875", weight 14.5 lbs



## 4278 100 gpm Digital Hydraulic Flow Meter

- Flow Accuracy to +/- 1% of indicated value
- Measures flow from 2.5 to 100 gpm
- Pressure up to 6000 psi
- Digital display for flow, temperature, analog for pressure
- Temperatures up to 250 deg F
- Reads flow in both directions, pressure on the high side of valve
- Requires 1 9V battery (included)
- Port is 1-5/16" -12UN #16 SAE ORB
- 9.45" x 7.87" x 7.87", weight 14 lbs



## 4285 100 gpm Digital Hydraulic Flow Test Kit

- Includes OTC 4292 Digital Readout and OTC 4291 Flow Block with Loading Valve
- Flow Accuracy to +/- 1% of indicated value
- Measures flow from 2.5 to 100 gpm
- Pressure up to 6000 psi
- Digital display for flow, temperature, analog for pressure
- Reads flow in both directions, pressure on the high side of valve
- Require 1 9V battery (included)
- Port is 1-5/16" -12UN #16 SAE ORB
- 12.99" x 12.4" x 10.24", weight 17lbs



## 4290 16 gpm Flow Block

- Can be used with Digital Flow Meter Readout OTC 4292 included in OTC 4285 and OTC 4294
- Port is 1-1/16" -12UN #16 SAE ORB
- Flow range from 1 to 16 gpm
- Max pressure 6000 psi

## 4291 Flow Block with Loading Valve

- Can be used with Digital Flow Meter Readout OTC 4292 included in OTC 4285 and OTC 4294
- Knob allows for pressure loading/restriction
- Port is 1-5/16" -12UN #16 SAE ORB
- Flow range from 2 to 100 gpm
- Max pressure 6000 psi



## 4292 Hydraulic Flow Measurement Digital Readout

- For remote flow measurement by using Flow Blocks OTC 4290 or OTC 4291
- Included in OTC 4285 and OTC 4294
- Digital display for flow, temperature, analog for pressure



## 4294 Deluxe 100 gpm Hydraulic Flow

- Measurement Set
- Comprised of OTC 4290, OTC 4291, OTC 4292, Long Cable and Hose Set and Short Cable
- Case included

### Heavy Duty Equipment



#### 1770A 1,500 lb. Dual Wheel Dolly

- Hydraulic jack provides almost 5" of lift and tilts wheel assembly 4° to prevent damage to wheel seal.
- Independent lifting rack provides maximum stability; rollers won't catch on load.
- Swivel casters for easy maneuverability.
- Floor space is 45" by 41".
- 6' chain holds load in place.
- Covered by OTC Lifetime Warranty®.



#### 5018A Truck Clutch and Flywheel Handler

- Replaces 14" & 15-1/2" clutch assemblies weighing up to 250 lbs.
- 13" low point enables access below side faring.
- Linkage raises load from horizontal to vertical position.
- 360 degree swivel head.
- Covered by OTC Lifetime Warranty®.



#### 5130 OTC 1,000 lb. Capacity DriveMaster™ Driveline Lift

- Low profile of 7".
- Lift range: 23" to 30".
- Pivoting pump handle +/- 15° tilt in each direction.
- Includes 553516 differential mounting adapter. Mounts easily using existing bolt patterns. Fits the most common differentials currently in use on Category 7 and 8 Heavy Duty Trucks. Including: Eaton, Fuller, Rockwell, Meritor, Spicer, International, and Mack.
- CE certified, PALD compliant.
- Covered by OTC Lifetime Warranty®.



#### 2,200 and 4,400 lb. Capacity Heavy-Duty Floor Cranes

- To conserve valuable floor space, crane folds into a compact package for storage.
- For "close-in" work, leg spread adjusts to clear vehicle's wheels, telescoping boom extension gives additional reach. Roller bearing mounted wheels and steering dolly provide ease of mobility.
- A two-speed hydraulic hand pump provides fast boom travel; descent of boom is under precise control of operator.
- Covered by OTC Lifetime Warranty®.

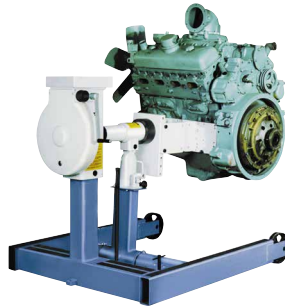
**1819** – 2,200 lb. Capacity Crane. Has hydraulic hand pump and 16-7/8" lifting chain.

**1820** – 4,400 lb. Capacity Crane. Has hydraulic hand pump and 18-3/8" lifting chain.



#### 5105B 1,100 lb. Capacity High-Lift Dual Wheel Dolly

- Effortless air-powered hydraulic lift system for a variety of applications.
- 0 to 42" lifting range.
- Six-inch lateral adjustment.
- Tilt adjustment of +15° to -8° for easy alignment.
- Features four swivel casters, two locking, for enhanced mobility.
- Covered by OTC Lifetime Warranty®.



#### 6000 lb. Revolver® Diesel Engine Stand

- 96-to-1 ratio worm and gear set rotates components 360°; handle locks in any position.
- Integral 12-ton jack raises the work to provide the swing radius needed for clearance. Two front wheels and two rear casters provide mobility.
- Covered by OTC Lifetime Warranty®.

**1750A** – Revolver diesel engine stand with No. 205061 universal engine adapter assembly permits use with a wide variety of mounting plates.

**1750** – Engine stand without universal engine adapter assembly.



#### 5190A Heavy-Duty U-Joint Puller

- The ideal tool for disassembling drivelines.
- May be used with up to a one-inch impact wrench.
- Quickly and easily removes sealed U-joint cups without the need for hammering or heat.
- Will not damage the driveshaft, yoke, bearing cups, or joints.
- Fits practically all Class 7 and 8 trucks, including: Spicer driveline 1610, 1710, 1760, 1810, 1880 Spicer SPL 140, 170, and 250 "Life Series" Meritor (Rockwell) 16N, 17N, 18N, 1710Meritor RPL 20 and 25 "Permalube" Series.
- Covered by OTC Lifetime Warranty®.



#### 1872 55-Ton Capacity Heavy-Duty Press

- Side-to-side positioning of ram allows full capacity pressing along entire bolster length without buckling or bending.
- Covered by OTC Lifetime Warranty®.
- Includes double-acting ram No. 51682 with 13" stroke; No. 4046 electric/hydraulic pump; No. 9651 gauge; No. 36887 hoses; and pump mounting bracket.



#### 1591B 10-Ton Combination Air Lift & Support Stand

- 40" removable handle and 8' air hose.
- Covered by OTC Lifetime Warranty®.
- Capacity – 10 tons (at 200 PSI air).
- Stroke – 10-7/8".
- Minimum height (unpinned, no extension) – 18-1/4".
- Maximum height (pinned in top hole, with extension) – 51-1/4".
- Covered by OTC Lifetime Warranty®.



#### 7180 Universal Bearing Cup Installer

This handy, adjustable tool is designed to install wheel-bearing cups in a wide range of heavy-duty axles. Simply adjust and lock the jaws to the cup I.D., slip on the new cup, set it in the bore, and drive it in with a hammer. The tool helps eliminate the damage caused by makeshift methods.

- Works on axles from 11,000 to 50,000 lb. capacity.
- Adjusts to fit 3-5/8" to 6-1/2" O.D. bearing cups, which adds up to as many as 30 individual drivers.
- Covered by OTC Lifetime Warranty®.



#### Slack Adjust Pullers

These pullers will yank even the most corroded slack adjuster off the S-cam—and do so in just a fraction of the time needed with "heat and beat" methods. Plus, they won't damage components. Both pullers have a rugged forcing screw and cast steel body. Puller No. 5055 fits many manual types, and the No. 5056 works on Rockwell, Haldex, Gunite, and Bendix automatic adjusters.

- Covered by OTC Lifetime Warranty®.

**5055**  
Manual slack adjuster puller.

**5056**  
Automatic slack adjuster puller.



#### 1783 Heavy-Duty 20-Ton Capacity Adjustable Support (One only)

- Rugged steel construction, and large 15-1/2" square base will satisfy support requirements up to 40,000 lbs.
- Features include 4-point adjustment. Height range is 15-1/4" to 24". Saddle diameter is 6".
- Covered by OTC Lifetime Warranty®.

Note: Recommend use in pairs.

5280

## OTC Diesel Particulate Filter Cleaner

- Robust design for long shop life.
- High pressure cleaning process for thorough cleaning of ash from DPF – produces 10 times the burst energy of competitive low pressure units.
- Burst Quick Check identifies if filter is too plugged for proper cleaning.
- Movable with locking wheels for placement throughout the shop.
- Computer controlled process based on OE requirements for start-to-finish cleaning without constant technician monitoring.
- Containment of hazardous ash for easy disposal.
- HEPA Filter Air Exhaust System included to exceed shop environmental air standards.
- Operates on standard 115V outlet.
- Proven to clean to over 92% efficiency.
- Third-party OEM test results using pin gauge measurement with approved OTC adapters and burst cycles. Actual results may vary.



## OTC Single Acting Cylinder Rams



		Capacity in Tons	Stroke	Height Collapsed	Height Extended
4100A	5-Ton Single Acting Cyl.	5	3"	5-11/16"	8-11/16"
4101A	5-Ton Single Acting Cyl.	5	5-1/4"	10-7/16"	15-11/16"
4103A	10-Ton Single Acting Cyl.	10	2-1/8"	5-9/16"	7-11/16"
4104A	10-Ton Single Acting Cyl.	10	6-1/8"	11-1/2"	17-5/8"
4105A	10-Ton Single Acting Cyl.	10	10-1/8"	15-1/2"	25-5/8"
4106A	25-Ton Single Acting Cyl.	25	6-1/4"	13-3/8"	19-5/8"
4107A	25-Ton Single Acting Cyl.	25	14-1/4"	21-3/8"	35-5/8"
4108A	5-Ton LP Single Acting Cyl.	5	9/16"	1-5/8"	2-3/16"
4110A	55-Ton Single Acting Cyl.	55	6-1/4"	11"	17-5/16"



5080

## Truck Front Leaf Spring, Pin, and Bushing Service Set

- Delivers 10 tons of hydraulic force to remove and install truck front spring eye bushing assemblies quickly and easily.
- Services bushings with diameters from 1-1/4" through 1-7/8", and pin diameters from 7/8" through 1-1/8". Handles all popular OE and aftermarket components, including Horton pin and bushing assemblies.
- Service bushing assemblies, in many cases, without removing leaf spring hangers and spring assemblies from the vehicle.
- All accessories are included except the hydraulic hand pump and hydraulic hose which must be purchased separately.



## 6- & 10-Ton Capacity Air/Hydraulic Service Jack

- Huge steel front wheels are mounted in bearings for trouble-free service life. Rear swivel casters make spotting the jack easy.
- Spring-loaded handle can be locked in three positions.

5106

6-Ton Air/Hydraulic Service Jack. Lifting range 4-3/4" to 23-1/4", reach 87", 45" handle.

5110

10-Ton Air/Hydraulic Service Jack. Lifting range 6-3/4" to 26-7/8", reach 93", 47" handle.



## Hydraulic Spreaders

- Included as standard equipment with our collision sets, these versatile hydraulic spreader tools are also available individually. Ideal for removing dents and creases, performing straightening jobs, or for use as a clamp. Makes working in tight spots easy.
- Maximum spread is 3-1/4".



4145A

## 100-Ton Cylinder Ram

- 100-ton ram with 2-1/4" stroke
- Collapsed Height 5.6"
  - Extended Height 7.8"



4000

## Single-Speed Hydraulic Hand Pump

This single-speed pump is ideal for single-acting rams. Developing up to 10,000 psi operating pressure, the pump operates horizontally or vertically in the "head down" position. Fingertip control provides instant release or pumping action. Has a built-in safety overload valve. Ideal for use with OTC single-acting rams, or similar competitors' rams.



## Dualmaster Two-Stage Hand Pumps

4008

Hydraulic hand pump with No. 9584 2-position, 3-way control valve (for operating single-acting rams), and No. 4006 BL2 2-gallon reservoir with legs.

4009

Hydraulic hand pump with No. 9500 3-position, 4-way control valve (for operating double-acting rams), and No. 4006 BL2 2-gallon reservoir with legs.

9101B

1/2-ton spreader with 1/4" NPT ram half coupler

9102

1/2-ton spreader with 3/8" NPT ram half coupler



4121

## 30-ton Power Twin Single-Acting Hydraulic Ram

Complete with No. 21873 threaded ram head insert, ram attaching screws, and No. 9796 ram half coupler.



## Vanguard® Two-Stage, High-Pressure Power Units

- Units feature a 10,000 PSI universal motor, which starts under full load. They are suitable for operation up to 10,000 PSI. Motor is 1-1/8 h.p., 12,000 RPM, (27 amp draw). Rated for intermittent duty.

4062

Vanguard 2-stage hydraulic pump with 2-position/ 3-way valve and 6 ft. remote motor control (115V). 2 gal. of oil supplied.

4064

Vanguard 2-stage hydraulic pump with 3-position/ 4-way valve and 6 ft. remote motor control (115V). 2 gal. of oil supplied.



4020

## Air/Hydraulic Pump

- Ideal all-around power source develops 10,000 PSI at 100 PSI air.
- Two-stage release mechanism; internal relief valve.
- 98 cu. inches of usable oil.
- Covered by OTC Lifetime Warranty®.

### TIFZX Heated Pentode® Refrigerant Detector

- Heated Pentode® sensor technology
- Tri-color visual leak size indicator
- Detects all CFC, HFC, HCFC's including R-12, R-22, R-123, R-134a, R-404a, R-407a, R-408a, and R-410a.

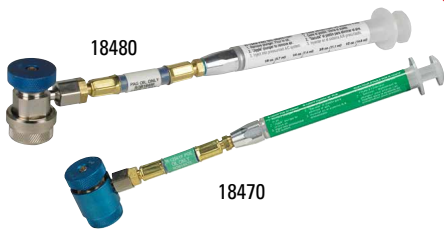


### 16009 DiscovR Refrigerant Identifier

Fast and Accurate. "Pass" and "Fail" lights clearly show if refrigerant is pure enough to be recovered.

#### Product Specifications:

Refrigerant: R134a  
Input Power: 12 VDC  
Accuracy: Pass/Fail - 95% pure R134a  
Air Detection: Yes  
Approvals: SAE J1771, UL/C



### Syringe-Type Injectors

Use these syringe-type injectors to add oil to a fully pressurized A/C system. Just fill the barrel with the amount of oil needed, connect the injector, and press the plunger.

- 18480** – R-134A oil injector, PAG labeled
- 18490** – R-134A oil injector, POE labeled
- 18460** – R1234YF oil injector, Generic
- 18465** – R1234YF oil injector, PAG labeled
- 18470** – R1234YF oil injector, POE labeled

Not recommended for UV dye injection.

### 75700 CoolTech Coolant Exchanger

- Our 10 minute exchange process means no more waiting for the engine to warm up!
- "Engine Off" feature removes pulleys, belts, and fan blades from the safety equation.
- Vacuum mode creates a "push/pull" exchange process allowing the technician to safely remove high pressure in a hot system.
- Leak check feature allows the technician to test for leaks prior to refilling.
- Two clearly marked valves and an easy-to-read gauge make this machine very easy to use.
- No electricity required. 90 psi shop air drives the exchange process, as well as the 2 gpm pump on the waste tank.
- Two external new coolant supply tanks allow on-board storage of two different coolant types.



### 75240 Coolant and Battery Refractometer

Coolant scale range:  
32° F/0° C to -60° F/ -51° C.



### Econo-Clean Coolant Service Accessories

**75134**  
Coolant test strips.

**75234**  
3-way heavy-duty truck coolant test strips.



## Robinair Manifolds



### 41234 R1234yf Aluminum Manifolds and Hose Set

- Easy-to-read 3-1/8" adjustable gauges.
- Durable aluminum manifold block with fittings.
- Improved face seal valves provide a tight seal, less wear and improved flow.
- Easy-to-grip control knobs.

### 2-Way Aluminum Manifold (R134A)

- 48510**
- 90° Manual couplers
- 72" R134a Hose Set (1/2" ACME x 14mm)



### 2-Way Brass Manifold

- 45111**  
R134a Manifold Hose Kit



### Economy Manifolds

- 48134A**  
R134 brass manifold, hose set and service couplers



- 49134A**  
R134 aluminum manifold, hose set and service couplers



## Robinair Vacuum Pumps

### VacuMaster® Single Stage Vacuum Pumps

- 15115**  
1.5 CFM Vacuum Pump.
- 15310**  
3 CFM Vacuum Pump.
- 15510**  
5 CFM Vacuum Pump.



### VacuMaster® 2-Stage Vacuum Pumps

- 15150**  
1.5 CFM Vacuum Pump.
- 15300**  
3 CFM Vacuum Pump.
- 15500**  
5 CFM Vacuum Pump.



### CoolTech® Vacuum Pumps

- 15434**  
4 CFM Vacuum Pump.
- 15600**  
6 CFM Vacuum Pump.



### 18410 Hydraulic Flaring Kit

- Fabricates a variety of fuel, brake and A/C line flares.
- Push connect 1/4, 5/16 and 3/8".
- GM fuel line, brake line and transmission 5/16 and 3/8".
- Flare and double flare.
- Metric bubble flare.
- Comes in a custom blow molded case.

### UV Leak Detection Kits

- The easiest and most accurate gun available today.
- No guesswork – a pre-measured application every time.
- One squeeze injects a pre-measure amount (1/8 oz.) of dye. No more adding too much dye.



16234



16235

### 92500 Transmission Fluid Exchanger

You can have the vehicle in and out of the service bay in less than 20 minutes! Operate through dipstick only, cooler line or a combination of the two!

- Exchange accuracy approx. +/- 1/4 qt.
- 32-qt. supply tank; 34-qt. waste tank.

### 92001 Automatic Transmission Fluid Diagnostic Pads

Easy, quick way to test automatic transmission fluid to determine when service is necessary. Simply place a few drops of transmission fluid from transmission dipstick onto test pad. Pad will change color indicating condition of transmission fluid. Package contains 100 pads.



## The best way to Service A/C



Robinair provides the industry's most dependable A/C machines, and that continues with the new 34788NI and 34788NI-H for high voltage systems. A new, compact design with fully automatic operation means less down time and more profit from A/C service.

## Unmatched 98.5% recovery

Robinair introduces its next innovation, the 34788NI and 34788NI-H, featuring an industry-leading 98.5% recovery efficiency for standard and hybrid vehicles and fully automatic function.



### 34788NI

#### Premier R-134A Refrigerant Recovery, Recycling, and Recharging Machine

- Fully-Automatic Function: Program to recover, vacuum, leak test and charge without operating panel valves.
- Automatic Oil Drain: A display reminds you to empty the graduated container to show the amount of oil to replace.
- Oil Inject: Automatically inject oil back into the vehicle's A/C systems.
- Refrigerant & Oil Database: A/C system capacities for North American market vehicles.
- Automatic Refrigerant Refill: Maintains a user-selectable amount of refrigerant in an internal vessel and signals. When it's time to change supply tank, no monitoring required.
- Optional Printer.

### 34788NI-H

**Electric Vehicle:** Capable of servicing high voltage electric compressor A/C systems.

### 1234YF A/C Service

**Fully automatic operation — program for service, walk away and return when complete.**

### AC1234-6

- 95% recovery efficiency
- Programmable vacuum operation helps get to the necessary vacuum level in any condition quickly.
- System leak test to identify gross leaks in a system.
- Charge accuracy within +/- 1/2 oz.
- Automatic oil drain shows how much oil was removed from the system during service.
- Automatic air purge removes the potential of air accumulating in the internal tank.
- Integrated refrigerant identifier (meets SAE J2927)
- Liquid refrigerant flushing function can flush A/C systems or individual components using liquid refrigerant instead of harsh chemicals.
- Automatic internal tank refill. No stopping to fill the internal tank during service, or before service.
- 1/4 Color VGA display. Large easy to read graphical display
- On-board printer capable of printing vehicle service report slips to present to customers.



Not responsible for errors in description. / 16-112 Q1 2017 Edition, Printed in U.S.A.

## The new 34988NI features the same Unmatched 98.5% recovery

### 34988NI

#### Premium Refrigerant Recover, Recycle, Recharge Machine

- Fully automatic operation frees technician to perform other tasks while servicing the vehicle's A/C system.
- Automatic oil drain and inject feature enables the machine to measure amount of oil removed from the vehicle and automatically puts the same amount back in free the user from measuring the amount of oil removed.
- Multiple oil bottles gives the machine the flexibility to store and inject two different types of oil saving the user time when servicing multiple vehicles.
- Large, easy-to-read graphical display.
- Standard onboard printer gives the user the ability to print service data to present to a customer after service.
- Unique Automatic Refrigerant Refill maintains a user-selectable amount of refrigerant in an internal vessel and signals when it's time to change supply tank, no monitoring required.
- Programmable vacuum feature defaults to 15 mins, but allows the user to select desired vacuum time up to 99 minutes.
- Automatic Air Purge eliminates system-damaging air without monitoring gauges or opening valves.
- Save before and after service data allows the user to store before and after service information by vehicle.
- Visual and audible alarm notifies the user when service is complete, or if a problem has occurred.
- Automatic Dye Inject gives the user the ability to use the machine to inject UV dye into a vehicle's A/C system.
- Optional refrigerant and oil database includes A/C charge and oil capacities for North American market vehicles.

