

MUSCLE TOOLS



Electronic Diagnostics | Special Tools | Shop Equipment | A/C Tools

Q4 2016 Edition

OTC ROBINAIR actron BOSCH

THAT'S HIM, HE FIXED MY CAR

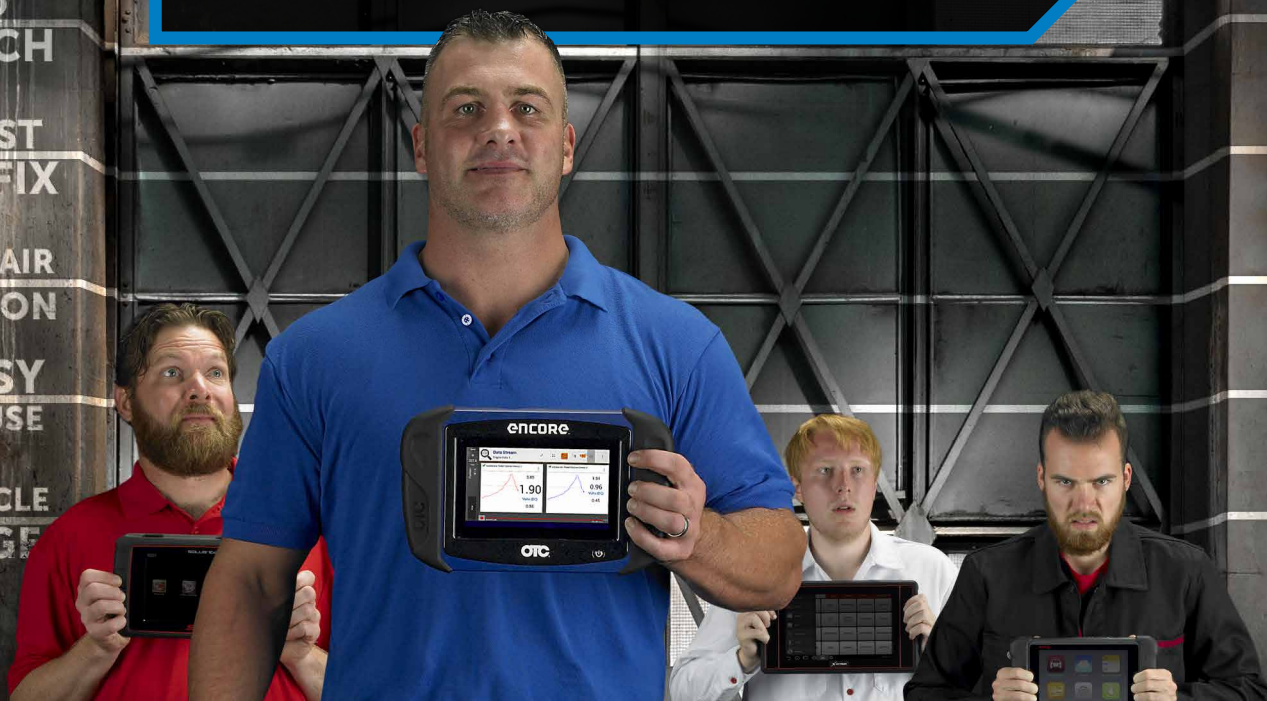
POWERED
BY BOSCH

FASTEST
TO THE FIX

ON-TOOL
& ONLINE REPAIR
INFORMATION

EASY
TO USE

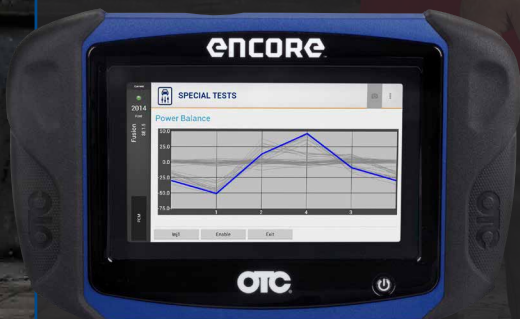
VEHICLE
COVERAGE



FIX CARS FASTER THAN THE USUAL SUSPECTS

The OTC Encore diagnostic system with Identifix® works fastest from code-to-fix, has best-in-class coverage, is easy to use and is the ultimate repair suite.

Learn more, request a demo or enter to win an Encore every day through December 31, 2016 at otctools.com/fix-cars-faster.



YouTube f

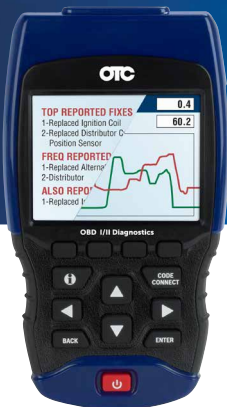


otctools.com/fix-cars-faster

QUESTIONS?
☎ 888 789 2602

DIAGNOSTICS EVOLUTION

OTC scan tools, powered by Bosch, are the fastest from code-to-fix with more than 30 years of OE-level coverage. The easy-to-use tools are favored among technicians who want coverage and repair information on the tool for vehicles they see in the shop everyday.



TRIAGE TOOL

3210 CodeConnect with ABS & Airbag

OBD II coverage and likely fixes for most 1996 and newer cars and light trucks.

- Color screen
- Read live engine data for OBD II vehicles
- CodeConnect database on-tool with the most likely fix based on DTC and vehicle
- Read and erase most Domestic and Asian ABS & SRS/Airbag trouble codes, 1996-2013
- ABS and Airbag for most Domestic and Asian vehicles 1996 – 2013
- Oil Light Reset
- Dual PID graphing
- Battery life reset



FIX CARS FASTER

3893 Encore

The OTC Encore diagnostic system with Identifix® is fastest at what counts, and that's fixing vehicles. No tool is faster from code to fix, pulling the DTC and showing the likely repair.

- Fastest from code-to-fix
- Best-in-class vehicle coverage
- 7" screen
- Powerful, fast Android OS
- Easy to use
- Ultimate online and on-tool repair suite
- Powered by Bosch
- Optional 3834 TPR kit with Bluetooth wireless TPMS performs sensor ID transfer
- Optional HD Standard 3895-07 kit includes Class 4 – 8 vehicle coverage
- Key and remote reprogramming procedures for vehicle and transmitters for remote controlled alarm, central locking and immobilizer systems
- Battery disconnect procedures for vehicles that have had battery service, replacement or loss of electrical power



COMING SOON: ELITE DIAGNOSTICS

3896 Evolve

As modern vehicles become increasingly complex, OTC diagnostics, powered by Bosch, continues to evolve. The flagship tool includes a wireless VCI, J2534-compliant device, larger screen and full-system wiring diagrams.

- 10.4" high-resolution screen reduces glare
- Powerful, fast Android OS
- Dual WiFi architecture provides a secure, wireless VCI connection and reliable Internet connection. Move freely around the vehicle and shop with confidence.
- Includes full system wiring diagrams, not offered on any other scan tool in the market
- Includes tablet docking station and backpack for increased battery life, performance and safe storage
- Includes J2534 compatible device for reprogramming and reflash.

*CODE-TO-FIX WITH IDENTIFIX

OTC diagnostics is built around repair information, with more than 26 million fixes on-tool from Identifix, access to top repair networks and sources. OTC tools have exclusive access to Identifix on-tool within the diagnostic session without having to re-enter vehicle information.

Not an Identifix subscriber? Purchase an Encore or Evolve and receive free access to the most complete repair information and Identifix ASE Master Technicians for 60 days.

DIAGNOSTICS FOR LIFE

RECEIVE A BOSCH POWER BOX 360C STEREO WITH PURCHASE OF AN OTC ENCORE



- ✓ LIFETIME WARRANTY*
- ✓ FASTEST TO FIX
- ✓ EXPANDED COVERAGE

OTC continues to add enhanced diagnostics coverage and tests to the Encore along with a lifetime hardware warranty.*

No tool helps you fix faster than OTC Encore

- First OTC tool with Bosch coverage database for European vehicles, including Mercedes-Benz, BMW and Volvo
- Identify most CAN vehicles in less than 5 seconds
- Read and clear codes in seconds
- Access top reported code fixes in seconds
- Extended-hours tech service days, nights and Saturdays. Call 888-789-2602.

Bosch Power Box 360C

- Bluetooth connectivity for in-ternet radio and stored music with range of up to 150-feet
- Four-way speakers and a subwoofer project 360 degree sound
- Protective aluminum/rubber roll cage
- Runs on Bosch 18-Volt Lithium-Ion batteries or plugged into a 120-Volt AC outlet
- Four-way power outlets



VALID OCT. 1 – DECEMBER 31, 2016

*Terms & conditions apply

How to participate & redeem: Visit boschrebates.com

SMOKED OUT FIND THE LEAK. CLEAR THE CODE. SMOKE THE TEST.

RECEIVE A OTC 3210 CODE CONNECT WITH PURCHASE OF AN OTC 6522 OR BOSCH SMT300



6522

MST300



OTC 3210 OBD II, CAN, ABS and AIRBAG WITH BRAKE AND STEERING ANGLE RESETS

- ABS coverage
- Airbag (SRS) coverage
- Enhanced code request
- Battery and Oil Light Resets
- MPG Fuel Mileage Calculation
- CodeConnect® with over 26 Million Top Reported Fixes*

*CodeConnect data in English only

VALID OCT. 1 – DECEMBER 31, 2016



How to participate & redeem: Visit boschrebates.com

Partner with Bosch Performance Gauges

Win a monthly Tach & Gauge bundle and a 2017 Indianapolis stock car race experience!

Enter to win by visiting us online at boschperformance.com/sweepstakes



3893

OTC Encore

3893

Encore, OBD II cable, USB cable, power adapter, and hard carrying case.

3893-LTW

Encore 1-Year Subscription & Lifetime Hardware Warranty Encore Domestic, Asian and European Software 1-year subscription kit provides a year of frequent and valuable updates for new coverage, coverage enhancements, repair information, application improvements and includes the Diagnostics for Life* lifetime hardware warranty.

Diagnostics for Life* lifetime hardware warranty means OTC supports your Encore for as long as you own it, as long as you update it.

The "hardware warranty" applies to the Encore scan tool tablet only. Accessories, such as cables, adapters, batteries and case remain the 90 Day factory warranty from purchase.



3893-LTW

Want to see your car on the cover of Muscle Tools this year? Send us a photo and information at otctools.com/musclecar

Featured in this issue on the cover:

- Gary Miller: 1964 Chevrolet Corvette
- Gary's favorite road to drive it on: County Road 45
- Gary's favorite memory with the car: Winning my first car show, Eagles
- The song Gary is listening to when he drives it: listens to the sound of the engine
- Repairs/services performed on the car: detailing



3895

Genisys Touch

- Includes a ruggedized 10" high resolution display tablet, J2534-1 / -2 compliant Vehicle Communications Interface (VCI), 10 OEM adapters, OBD II cable, USB cable, 12V power cable, AC power supply and custom carrying case.

- AutoDetect™ GenisysTouch software automatically detects and alerts the technician of on-tool or web-based repair information.
- Training Videos.
- Videos within live diagnostic sessions don't interrupt workflow connectivity.
- Partner up with the included OTC J2534 Communication Device. Or pair up with the optional.
- PC-based 2-Channel Tech-Scope® or TPR Tool via long-range Class 1 Bluetooth®.
- Shorten your diagnostic time, maximize billable labor hours and get the repair done from Code-to-Fix®.



Available now – 13,000 confirmed HD diagnostic fixes

New ESI[repair] subscription service with 13,000 trouble code fixes.

Free trial for current tool owners.
Confirmed fixes based on module, code and truck configuration.

Visit boschdiagnostics.com/pro to learn more.



ESI[Truck] HD Diagnostics

UNMATCHED COVERAGE AND REPAIR INFORMATION AT THE TRUCK

The most complete diagnostic coverage for multibrand heavy-duty trucks and engines, performing special tests and parameter reset capabilities.

NEW REPAIR INFORMATION SUBSCRIPTION SERVICE

ESI[repair] subscription service for ESI[truck] includes 13,000 experienced based fixes. The tool includes fixes specific to trouble codes and symptoms with repair information viewed while still in diagnostic mode.

TRUCK COVERAGE

Trucks: Freightliner, International, Kenworth, Mack, Volvo, Peterbilt, Sterling, Westernstar, MD Trucks (Freightliner Sprinter Van, Isuzu, GM and Ford).
Trailer ABS Controllers; Allison & Eaton Transmissions.

ENGINE COVERAGE

Heavy-duty engines – Caterpillar, Cummins, Detroit Diesel-MBE, Deutz, Mack, MTU, Navistar, PACCAR, Perkins and Volvo. Medium and light duty engine software included.



3824

WINDOWS 7 TABLET SCAN TOOL

Includes VCI, 6 pin and 9 pin cables

3824BSC

SCAN KIT

- Use with your shop PC
- Includes Bosch diagnostic software, VCI, 6 and 9 pin cables.

3824-06

Bosch ESI[truck] Trailer Adapter

- 7-pin PLC adapter for trailer ABS diagnostics
- J2497 Power Line Carrier (PLC) communication compatible
- Allows direct connection to trailer
- Works with tractor present or without the tractor present
- External power supply is necessary without tractor
- Bosch ESI[truck] trailer ABS coverage for Bendix, Haldex, Meritor Wabco and Wabash systems

3824-08

Bosch ESI[truck] License Renewal 12-Month Security Card

3824-08R

Bosch ESI[truck] Repair Information Subscription 12-Month Security Card



3824



3824-06



Watch the tool used
at a local shop.



3840F

Automotive Scope

The exclusive vehicle-specific database in the 3840F contains information for most domestic vehicles as well as many imports. The Scope also recommends the appropriate test procedures for fast, accurate repairs. Visible on the screen are diagrams showing pin numbers and wire colors for both the PCM and the component connector.



3415

CAN Test Box Breakout Box for Scan Tools

- Connects between Diagnostic Link Connector (DLC).
- Connect leads for increased diagnosis, analysis, and monitoring.

Useful Functions

- LEDs display signal detection – Flashing LED's
- Magnifies DLC
- Displays battery voltage with warning

TPMS Service Made Easy With OTC

The expected lifespan of tire pressure monitoring system (TPMS) sensors is between 7 and 10 years, meaning many vehicles coming into your shop are already in need or going to be in need of replacement sensors. Use this opportunity to educate your customers on the importance of the TPMS sensors – safety, vehicle awareness and peace of mind.

OTC recently brought a new standalone OBDII TPMS tool to market with basic diagnostics capabilities. Think of it as a TPMS tool with a built-in enhanced code reader. Plug the dongle in to the OBD II port and scan each tire's TPMS sensor. The vehicle will learn and register the sensor position and PSI almost instantly, allowing the relearn procedure to take less than 10 minutes.



3838

Standalone TPMS Tool with Bluetooth OBD II

The OTC 3838 is both a sensor activation and diagnostic device that features a wireless OBD II module for TPMS sensor registration. The tool works with all OEM and aftermarket sensors.

- Exclusive wireless OBD-II module for TPMS sensor registration.
- Standalone TPMS tool with activation, relearn and diagnostic capabilities.
- Three years of software updates included.
- Allows for cloning of universal sensors.
- KEY FOB signal test and infrared print capabilities.



OVER 26 MILLION VERIFIED FIXES, COLOR SCREEN ADDED EUROPEAN COVERAGE & MORE!

3210

NEW



OBD II, CAN, ABS & AIRBAG EPB BRAKE CALIPER RESETS, BRAKE BLEED TESTS, BMW BRAKE ZEROING TEST STEERING ANGLE RESETS POWERTRAIN & ABS DATASTREAM

ABS COVERAGE

1996-2012 Audi, BMW, Jaguar, Land Rover, Mercedes Benz, Smart, Volkswagen, Volvo
1996-2013 GM, Ford and Chrysler
1996-2013 Toyota, Honda, Hyundai and Nissan

AIRBAG (SRS) COVERAGE

1996-2013 GM, Ford and Chrysler
1996-2013 Toyota, Honda, Hyundai and Nissan

ENHANCED CODE REQUEST

For GM, Ford, Chrysler, Honda, Hyundai, Nissan, Toyota, Audi, BMW, Jaguar, Land Rover, Mercedes Benz, Smart, Volkswagen, Volvo vehicles

BATTERY AND OIL LIGHT RESETS

Reset battery life for late model BMW, Ford F-Series trucks and Mini Coopers. Reset oil life to 100% and turn off the change oil light.

MPG FUEL MILEAGE CALCULATION

Displays Instant MPG, Average MPG, Elapsed Time, Distance (MI), Fuel Used (GAL) and Average Speed (MPH) with the ability to alternate between English and Metric units on screen.

CODECONNECT® WITH OVER 26 MILLION TOP REPORTED FIXES*

The most probable solution to the vehicle problem that is specific to code and the vehicle year, make, model, engine.



3208

OBD II & ABS Scan Tool

- Read ABS code and definitions for most 1996-2013 GM, Ford, Chrysler, Honda, Hyundai, Nissan and Toyota vehicles.
- View live engine data.
- Read/erase hot keys.
- View all available I/M Monitors and freeze frame data.
- Automatically reads DTC's (Diagnostic Trouble Codes) when connected for fast diagnostics.
- Works on all 1996 and newer vehicles (OBD II & CAN).



3209

Trilingual

OBD II, ABS & Airbag Scan Tool

- Color screen.
- ABS & Airbag code and definitions for most 1996-2013 GM, Ford, Chrysler, Honda, Hyundai, Nissan and Toyota vehicles.
- Battery, Alternator & Charging System Monitor.
- Graph, record and playback live date.
- Full manufacturer specific code definitions.
- Updateable – USB update cable included.
- Live engine data.
- AutoID® – Automatically selects the vehicle on most 2000 and newer vehicles.
- View all OBD II global data including Modes 5, 6 & 8.

Test battery voltage and CCA in less than 10 seconds

Quickly test charging and starting system health without disconnecting leads



- Download the OTC3200 app from the Google Play or iTunes store. View battery test data by scanning the device QR code*. Instructions included on testing device.
- All light duty applications - test 6V, 8V and 12V lead acid and AGM batteries
- Diagnose bad batteries faster – an internal 9V battery allows testing for deeply discharged batteries
- Share your test results – print, save or email a customer friendly color report
- Confidently recommend repairs – use your smart phone or tablet camera to embed photos into customer reports
- Sync feature sends information to all phones used in your shop so every tech can access reports by vehicle.

*Smart devices paired with the tester must have auto-focusing rear-facing camera to meet full requirements



3200

Watch the tool used at a local shop on a 2000 Celica here:



3183

OTC Digital Battery Tester

Speed. Accuracy. Reliability. These are the cornerstones behind the technology in our digital battery testers. Test 12-volt batteries (125–1400 CCAs) and analyze by measuring multiple parameters within the battery to deliver accurate results. A live voltmeter allows easy starting/charging system testing. Its bright, 4-digit LED display indicates battery status, voltage, and available CCAs. Compensates for cold temperatures.



4639

Battery Terminal Service Kit

Seven favorite battery tools, housed in a rugged, vinyl-coated fabric pouch. Kit includes: a heavy-duty battery terminal puller, 4-way battery post cleaner and reamer, angled battery nut pliers, GM 5/16" battery terminal ratchet wrench, extra long 5/16" terminal ratchet wrench, 10 mm battery terminal ratchet wrench, and side terminal battery brush.

Your one-stop shop for OEM tools



F00E9016307HH

The Ford Vehicle Communication Module II (VCM II)

- Authentic OEM diagnostics for Ford, Lincoln and Mercury Vehicles.
- Customer Flight Recorder (CFR) functionality with an optional pendant cable.
- Four LED indicators and signaling device providing technician with continuous visual as well as audible operating status.
- Enhanced 802.11 wireless that minimizes dependencies on service department wireless capability infrastructure.

F00E9016297H*

Includes VCM II, VCM to Laptop cable, USB wireless cards, and DLC cable.

F00E9016307H*

Includes all contents of F00E9016297HH plus CFR kit.

*Software license sold separately.

Ford and VCM II are used under license from Ford Motor Company.

F00E9009777H

Tech 2 Pro Optima

The only authentic General Motors Tech 2 scan tool with full, dealer-level diagnostics. Includes preloaded software that doesn't expire.



F00E901631

Bosch Mastertech VCI

Validated J2534 Flashing – covers GM, Ford, Chrysler, Honda, Nissan, Mazda, Mitsubishi, Saab, BMW, and more to come. M-VCI is an OEM approved reprogramming device.

Authentic OEM Dealer Level Diagnostics* – compatible with BMW ISTA, Saab GDS 2, GM Tech2Win, GM GDS 2, and more to come.

F00E901632 Bosch Mastertech VCI Aftermarket Diagnostic Software – Includes the final release of Shop Foremen Pro and ESI 2.0.

* OEM dealer diagnostic software is purchased separately from vehicle OEM websites.

HD Battery Testers



3167

Battery & Electrical System Diagnostic Tester

- Digital circuitry precisely controls battery test loads to accurately determine battery conditions.
- Tests both flooded lead acid and AGM/gell cell batteries accurately—down to 1 volt state of charge.
- Tests vehicle starting and charging systems with minimal user interaction.
- Tests all 6- & 12-volt batteries with a 50-2000 CCA operating range.
- Scales: CCA, CA, AHR, MCA, JIS, DIN.
- Removable/auto-sensing leads. (3' leads included in kits, optional 10' leads available.)
- Optional amp clamps for current drain tests and starting/charging measurements.
- Includes SABRE HP, 3' test leads, side-post terminal adapters, instruction manual, and molded-plastic carrying case.

Genisys EVO® Software

3421-152

2015 Super Bundle Kit

- Everything needed to update a Genisys EVO
- Includes 2015 Domestic/Asian, 2014 Euro, and preloaded System 5.0 memory card



3421-153

2015 Software Loyalty Kit

- Designed for customers who already have System 4.0 and newer.
- Includes 2015 Domestic/Asian & 2014 Euro.



3421-154

2015 System 5.0 4GB Memory Expansion Kit

- Pre-loaded with 2015 application software
- New applications require a separate purchase



Encore/Genisys Touch HD



3895-07

OTC Heavy-Duty Standard

- Class 4 - 8 HD Standard truck Coverage
- Read / erase codes and view live engine data

3895-08

OTC Genisys Touch 12 Month Software Subscription

Genisys Touch Domestic, Asian and European Software 12 month subscription kit provides a year of frequent and valuable updates for new coverage, coverage enhancements, repair information and application improvements.



3834T

OTC TPR Activation Tool VEHICLE COVERAGE THROUGH 2016

- Lower cost kit for use with the Genisys Touch scan tool or as a stand alone tool.
- Works on vehicle TPMS sensors through 2016.
- Bright graphic display and simple navigation buttons enable vehicle selection for fast activation.
- Automatically adjusts activation output power to eliminate crossactivation of near sensors.
- Tool includes a 6 month update subscription from www.tpmsupdates.com



Professional Memory Saver

- OBD II cable for fast connection to the vehicle
- Cigarette lighter adapter for use with vehicles that do not have an OBD II connector
- LED lights confirm circuit between the cigarette lighter/ power outlet and the vehicle's battery with the ignition on or off
- State of charge indicator identifies when the memory saver needs to be plugged in for recharge
- Resettable fuse protects against excessive current draw through either the OBD II connector or the vehicle's cigarette lighter
- High capacity, rechargeable sealed lead acid battery for extended service between charges

Smart Battery Charger and Maintainer

Utilizes switching technology which helps restore the batteries that are slightly sulfated.

Switches to float mode after the battery is completely charged.

- Maintains the battery charge level during vehicle programming.
- Charges deep discharged batteries in about 12 hours.
- Application: Lead Acid (FLA, AGM, GEL).
- Maintains the battery charge level if the vehicle or the battery needs to be stored for an extended period of time.
- Switches to float mode after the battery is completely charged.
- Utilizes switching technology which helps restore the batteries that are slightly sulfated.
- Easy to read LED lights to show the status of charging and battery condition.



3176

Receive a \$1,000 Rebate with the purchase of a OCL8850 On Car Brake Lathe

OCL8850



New enhanced universal adapter UMA2015-00 included



- ▶ Quick and easy mounting fits on every vehicle!*
 - ▶ Only one adapter
 - ▶ Less parts
 - ▶ Easy storage
 - ▶ Ergonomic and Compact
- *With ear style mount caliper.

Offer available from
October 1, 2016 – December 31, 2016.

How to redeem
Visit www.boscrebates.com to participate.

End User
Promotion
CALL FOR
PRICE



Scan to see the marketing
video on the OCL8850

Year End Savings Receive a \$300 Rebate All TCE & WBE Models*



* This promotion excludes
the Easy Combo, TC220,
TCE5210/5320

Offer available from
October 1, 2016 – December 31, 2016.

How to redeem
Visit www.boscrebates.com to participate.

End User
Promotion
CALL FOR
PRICE



Scan here to see
All TCE & WBE models



1694100204810

WBE 4110 Standard Digital Wheel Balancer

- Automatic 2D (Distance & diameter) data entry
- Digital display wheel balancer
- Superior Bosch balancing program accuracy to balance it right the first time every time!
- Extended shaft for larger wheel coverage
- Small footprint with low profile hood maximizes floor space



1694100245810

WBE 4230 Premium Digital Display Wheel Balancer

- 3D automatic data entry
- Enhanced digital display
- Superior Bosch balancing program accuracy to balance it right the first time every time!
- Fast 6 second cycle time
- Auto-locking arm puts tape weights in the correct location every time
- Extended shaft for larger wheel coverage



TCE4275EHC

28" Swing Arm Tire Changer

- **Large & Robust 2-Speed Electric Turntable** – Delivers users two variable speeds for ultimate control during operation and standard clamping capacity of 28" external and 30" internal.
 - Work faster on average sized tires and delicately on challenging wheel and tire combinations.
 - Controlled by an electric moto-inverter allowing for smooth torque ramp up and "slow down and power up".
 - Accommodates assemblies up to 47" in diameter and maximum width of 14".
- **Helper Arm Assembly** – An articulating bead depress arm and bead roller which operate independently yielding precise control from two points of contact during the tire changing process.
- **Increased Rigidity** – The new G-Frame Concept provides extreme rigidity which greatly reduces mount/demount flexion virtually eliminating damage to wheels and tire.
- **Ergonomic Hand Actuated Bead Breaker*** – Allows for effortless wheel/bead separation while minimizing operator discomfort and maximizing control.
- **Enhanced Inflation Speed** – Jaw-integrated inflation system and tower mounted gauge provide simple and fast adjustment.

*Depending on configuration



TCE4475EHC

28" High-Performance Tilt Back Tire Changer

- Equipped with the special helper arm assembly, the bead press device and bead roller operate independently yielding more control from two points of contact, providing precise control of the operation.
- **Helper Arm Device** – The bead press device and bead roller operate independently yielding more control from two points of contact.
 - **2-Speed Rotating Turntable** – Allows for exact torque when needed, and only requires a 110V electric circuit.
 - The motor can be reduced to 7 RPM's for finesse when handling challenging tire and 15 RPM's when more speed is required.
 - **Large Clamping Capacity** – External clamping capacity up to 28" without the need for additional adapters.
 - **Ergonomic Control for Bead Breaking** – The hand operated bead breaker allows for easy tire/wheel demounting while minimizing operator discomfort.
 - **Stable Design** – Extreme structural rigidity by virtue of the patented G-Frame design greatly reduces mount/demount head flexing which essentially eliminates damage to wheels and tires.
 - **4-Point Adjustable Bead Breaker** – Optimizes force and speed resulting in less demand for air consumption.



1694100246810

WBE 4430 Premium Monitor Display Wheel Balancer

- 3D automatic data entry
- Monitor display wheel balancer
- LED light ring illuminates the the wheel well
- Auto Weight Location Position Lock automatically stops near weight location
- Superior Bosch balancing program accuracy to balance it right the first time every time!
- Fast 6 second cycle time
- Auto-locking arm puts tape weights in the correct location every time



1694100287810

WBE 4400 Video Wheel Balancer

- New ergonomic design, better access inside the wheel, improved working position and more comfort for the user
- 19" TFT monitor, simple and intuitive control panel for greater functionality
- Superior Bosch balancing program accuracy to balance it right the first time every time!
- EASY-FIX Positioning System automatically measures diameter and distance (2D), and ensures accurate stick weight placement
- ADF (Automatic Detection Function) for weight positioning



4484

Weather Pack Ratcheting Crimper Kit

Now you can manage environmentally sealed connection systems on your vehicle with the OTC 4484 Weather Pack Crimper Kit. Weather Pack connection systems are designed to protect against exposure to heat, moisture, and contaminants with unfaltering performance. The OTC 4484 comes with 2 interchangeable crimping dies, covering wire range AWG 22 / 20-18 (DIN: 0.35 / 0.5-0.8 mm²) and AWG 16-14 / 12 (Din: 1.0-2.0 / 3.0 mm²). The dies are easily interchanged - simply slip into place and are magnetically secure. The inside lid decal shows how the Weather Pack crimp is properly made. These connections can be found on automobiles, Class 7-8 Tractors, Motorcycles - just about everywhere.



2497

3 Piece Push Pin/Body Clip Pliers Set

Remove plastic body fasteners and clips faster in nearly any location. A set of three push pin / body clip pliers includes straight, 45° and 90° jaws to reach in wheel wells, under bumpers and behind the dash to remove retaining clips. The various jaw angles help access hard-to-reach places while providing maximum leverage to remove clips quickly and without damage. The unique design lifts the center pin and pulls body clips without damaging anchors, eliminating the need to provide replacement clips. Reusing these fasteners saves money and time searching for replacements of various shapes and sizes. The 3-piece set comes with an OTC lifetime warranty against defects in material or workmanship.

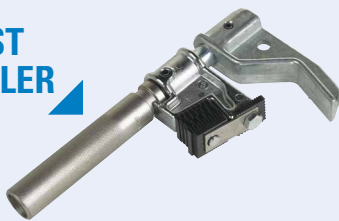


6982ACP

Automatic Center Punch

- Accurately marks your drill point every time.
- Creates deep center mark to prevent drill bit from wandering.
- Flared top fits comfortably in palm of hand.
- Allows free hand to place marking tip exactly where you want it.
- Press tool until spring releases causing tip to mark your drilling point.

BEST
SELLER



7402

Universal Outside Thread Chaser

- Quickly restore threads to near new condition without expensive thread cutting equipment.
- Replaceable V-Pads and dies.
- Use for 1-1/4" to 5" O.D.
- INCLUDES standard die set - No.216884 (six dies - 4,5,6,7,7-1/2,8,9,10,11,11-1/2,12,14,16,18,20 and 24 threads per inch)
- Metric size dies available - No.202817 (six dies with metric pitches - 1.0, 1.25, 1.5, 1.75, 2.0, 2.5, 3.0, 3.5, 4.0mm) - Must be purchased separately



8330

Resurfacing Grinder - Medium

- Cleans dirt, rust, and corrosion from many surfaces including hubs, rotors, inside wheel edges, and other large surface areas.
- Can resurface up to 400 hubs before replacement of media is required.
- Recommended for up to 1500 RPM.

8330-RP

Two replacement discs for 8330.

6982DEX

3 Pc Double Edge Screw Extractors

- For unscrewing broken bolts and screws without damaging threads.
- Can be turned in clockwise or counter clockwise direction for right and left handed threads.
- Drive extractor into drill hole for secure fit.
- Hex shank design works with standard hex sockets eliminating rounded corners.
- Industrial Quality - Made from High Strength Steel - Tapered Flute design.



6982DGS

Drilling Guide System

- Drill perfectly centered holes in broken studs.
- Anchor rail guide on any open hole within reach of broken stud - 6 inch reach.
- 4 bushings for common stud sizes - 6mm, 8mm, 10mm, and 12mm.
- 4 drilling guides for progressive drilling - 1/16", 3/32", 1/8" and 5/32".
- Conveniently stores in vinyl pouch - includes instructions.
- Made in USA with a Lifetime Warranty.



5900A

52 Piece Master TORX® Socket Set

- All bit sockets are a 2-piece design, 20% strong than a 1-piece style
- Includes Torx Bit Sockets, Torx Plus Bits Sockets, Tamper-Resistant Torx Bits, and Torx Socket for external bolts.



6180

TORX® Plus Bit Socket Set

- 1/4" Sq. Dr: TP10, TP15, TP20, TP25, TP27, and TP30.
- 3/8" Sq. Dr: TP40, TP45, TP50.



4 PIECE ROLLING HEAD PRYBAR SET

INCLUDES A FREE PAIR OF OTC SMARTTECH WORK GLOVES (L)

4 PC ROLLING HEAD PRYBAR SET FROM OTC

7176

Includes 6", 12", 16" and 21" lengths for a variety of duties - small - large and in between. Heated to cherry red, upset, then forged and swaged processing creates the tool, then our special thermal treating process locks in the strength you count on. Won't bend or break.



OTC Wire Service Tools

4470 Butane-Power Flameless MicroTorch

- Cordless 650° (1250°F) flameless heat.
- Refillable fuel cell uses standard butane lighter fluid (butane NOT included).



4472 Cordless Solder Tool Kit

Includes: Soldering iron, conical tip 2.4 mm, chisel tip 2.4 mm, hot knife tip, deflector tip, sponge, wrench, and soldering wire.



4460 2-Piece Electrical Connector Separator Tool



4461 Terminal Release Tool Set



1/4" & 3/8" Cable Cutters

- 4476**
1/4" cable cutter.
- 4477**
3/8" cable cutter.



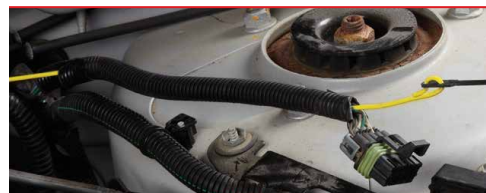
4467 Automatic Wire Stripper

- Comes with adjustable depth gauge (8mm to 12mm).



4468 9" Self Adjusting Wire Stripper

- Strips insulating sheathing from wires ranging from 10 ga. to 22 ga.



5912 Crimwell™ Angled Crimping Pliers

- Universal crimping design accommodates soft wire – solid or stranded – 10-22 AWG.
- Cutting feature included for quicker preparation.
- 9" (228mm) in length, with protective grips to increase leverage and secure crimp.



5950A CrimPro™ 4-in-1 Angled Wire Tool

- Compact 7-inch design.
- Gripping nose.
- Crimper, 12-20 AWG insulated & non-insulated wire.
- Stripper – strips 12-20 AWG wire.
- Cutter – ability to make cuts both above and below pivot.



5950S CrimPro™ 4-in-1 Wire Tool

- Compact 7-inch design.
- Gripping nose.
- Crimper, 12-20 AWG insulated & non-insulated wire.
- Stripper – strips 12-20 AWG wire.
- Cutter – ability to make cuts both above and below pivot.



5947 Butt Connector Kit (240 Piece)

Two styles - insulated and non-insulated. Three sizes of each style: 12-10 AWG, 16-14 AWG and 22-18 AWG.



4813 Heat Shrink Tubing Set (171 Piece)

Protection and insulation for solder connections and components. 2 to 1 shrink ratio with flame or heat gun.



4814 Waterproof Heat Shrink Tubing Set (106 Piece)

Waterproof protection and insulation on solder connections and components. Adhesive lined inner wall to seal out moisture. 3 to 1 shrink ratio with flame or heat gun.



4462 Wire Loom Threading Kit

The 4462 Wire Loom Threading Kit from OTC is a clever grouping of wire fishing tools for the automotive technician. Whether general wiring R&R - or adding Gauge Packs, Sound Systems, Vehicle Security and Camera Systems, these tools simplify placing the wiring within the protection of existing wiring looms, without cutting tape or zip ties and without damage to other wires.

There are 3 wire pulling tools in 15", 10" and 5.5" lengths for common automotive applications, the grommet insertion tool allows the wire to be captured within the tool to hold once it is placed, placed so you can grab from the opposite side of the firewall - and the pigtail tool assists when building a new harness on the workbench.

Fuel Injection Kits

7448A Canister-type Fuel Injector Cleaner

Simply and completely clean a vehicle's fuel system with the 7448A Fuel Injector Cleaner.

With the addition of a quick-connect fitting, the removable hose can be thoroughly cleaned for storage and extending the life of the product. An included blowout fitting adapts to shop air supply to remove residual cleaner from hose lines.



Fuel Injection Application Manual covers vehicles from 1997 – 2013.



6550PRO Pro Master Fuel Injection Service Kit

Covers 100% of vehicles sold in North America '97-'13. Perform fuel pressure testing, diagnose weak fuel pumps or restricted filters, test for fuel flow and perform leak-down tests. Use to clean injectors and intake systems. Kit includes:

- 0 – 100 PSI Fuel Pressure Gauge.
- 47 of the popular OTC fuel injection adapters, each equipped with a quick-connect Schrader valve.
- '97 – '13 Fuel Injection Service Application Manual.
- Replacement seal kit also included.



4480 Basic Fuel Injection Service Kit

- Performs running, residual, rail and flow rate pressure tests.
- Kit includes adapters, hoses and fittings to test fuel injection systems.
- Kit includes two popular adapters for import vehicles as well as the GM TBI adapter.
- Professional dual scale gauge reads 0-100 PSI and 0-700 kPa with relief valve, fuel discharge hose and rubber boot.
- Packaged in blow molded carrying case.



6554 Fuel / AC Line Disconnect Kit

- Topside disconnects for AC and Fuel lines.
- Clips, disc, and scissor styles for broad applications.
- Hi-visibility line plugs included.

6690

Ford Master Cam Tool Kit

- Contains 40 tools to ensure correct cam timing when servicing timing belts, chains, head gaskets, or other valve train repairs.
- Covers L4, V6, V8, V10 engine with 2V, 3V, 4V valve configurations, model years 1991 – Present.
- Application guide with diagrams and blow molded case included.



6690-1

Ford Cam Tool Kit Update

- Contains 18 tools, with case locations for addition of the popular 6489 Ford Cam Tools, making a 6690 Kit.
- Ford Cam Tools ensure correct cam timing when servicing timing belts, chains, head gaskets, or other valve train repairs.
- 6690-1 tools cover L4, V6, V8, V10 engines with 3V & 4V valve configurations, model years 2004 – Present.
- Application guide with diagrams and blow molded case included.



6918

Ford Spark Plug Remover Kit, 3V Engine

- Prevent breakage by locking the plug porcelain core to the plug hex allowing it to turn as one complete unit.
- Will also pull plug porcelain core if plug hex only is removed.
- Detailed Instructions to maximize success rate.

Works on:

- Ford 4.6L 3V V8 engines used in 2005–2008 Mustang, 2006–2008 Explorer.
- Ford 5.4L 3V V8 engines used in 2004–2008 F-Series, 2005–2008 Expedition, 2005–2008 Lincoln Navigator.
- Ford 6.8L 3V V10 engines used in 2005–2008 F-Series 250-350-450.



6488

Ford Cam Tool Kit

Ford cam tool kit for 1997 thru 2011 4.0L Explorer/Mountaineer SOHC V6 engines. Kit contains tool Nos. 6478, 6479, 6480, 6481, 6482, 6484, 6485, and molded storage case.



6498

Ford 4.6L & 5.4L 4V Cam Timing Kit

- Saves time; all tools required for camshaft timing are in one kit. Set Includes:

- 525216 – Camshaft positioning tool
- 525217 – Camshaft holding tool
- 525219 – Crankshaft positioning tool
- 525218 – Secondary chain tensioner tool



6489

Ford Cam Tool Kit

- The OTC Ford cam tools ensure correct cam timing when servicing timing belts, chains, head gaskets, or other valve train repairs.
- Ford cam tool kit containing 22 cam tools covering
- 1992 thru 2012 for over 50 applications, in a molded storage case.



6680

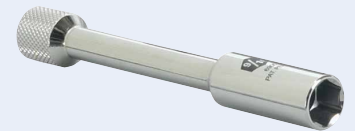
Ford 3.9L 4V Cam Tool Set

- The 6680 is designed to service Ford 3.9L 4V V8 engines used in 2000-2006 Lincoln LS cars.

6900

Ford Spark Plug Socket

- This unique design works on 2004–newer Ford vehicles with 5.4L, 4.6L, V8, 6.8L, V10, 3-valve engines.
- Socket end is 9/16". Soft rubber insert holds and protects spark plug during removal and installation.
- Extension is part of the socket. Easily fits down spark plug tube in cylinder head.
- Socket has a 3/8" drive for use with a ratchet or breaker bar.



5607

Compression Tester Ford 14mm Adapter

Use with OTC compression testers to access hard to reach spark plug holes.

- Works on 2004 and 2007 Ford 4.6 and 5.4 L, V-8, 3 valve engines.
- Easy-to-turn feature makes starting thread fast.
- Use with compression testers with 14 mm thread.



5608

Compression Tester Ford 12mm Adapter

Use with OTC compression testers to access hard-to-reach spark plug holes.

- Works on 2008 and newer Ford 4.6, 5.4 and 6.8L 3-valve engines with 12mm spark plugs.
- Easy-to-turn feature makes starting thread fast.



6678

Cam Gear Holder, 2 pack

- The holders clamp between the engine block or head and the back of the gear to lock it in place.
- Use on single, dual, or quad cam engines to hold valve timing during belt replacement.
- Excellent for diesel injection pump belt replacement.
- The cam gear holders universal design are quick and easy to install.



6679

Cam Gear Clamp and Holder Set

- The holders clamp between the engine block or head and the back of the gear to lock it in place. The cam gear clamp is used between two adjacent gears to lock them together and eliminate movement.
- Use on single, dual, or quad cam engines to hold valve timing during belt replacement.
- Excellent for diesel injection pump belt replacement.



7424

Belt Holding Tool

- Keeps belt from falling off of a pulley during belt installation.
- Universal design to fit most pulley styles and sizes.
- Super strong magnet to hold the belt firmly on the pulley.
- Multiple holders can be used for belt applications that fit around many pulleys.
- Durable plastic housing with magnet for steel/iron pulley applications.





6613

Variable Pin Spanner Wrench

- Universal design fits many different types of pulleys having slots or holes, including camshaft pulleys and crankshaft pulleys.
- Wrench is adjustable from 1-1/4 inch to 5 inches; works with a 1/2 inch ratchet or breaker bar.

Set Includes:

526908-1 – 3.5 mm pin	526908-2 – 4 mm pin
526908-3 – 4.5 mm pin	526908-4 – 5 mm pin
526908-5 – 6 mm pin	526908-6 – 7 mm pin
526908-7 – 10 mm pin	526908-8 – Handle



7196

Crank & Cam Seal Service Kit

- Removes and installs camshaft and crankshaft seals on cars, trucks, vans and SUVs without damage.
- Includes a puller coupled with specialized puller legs that hook the seal for quick and easy removal.
- The interchangeable seal install adapters are designed for use with the cam or crank bolt. Kit services seal sizes of 21.5mm to 64mm.

6673

Universal Belt Tension Gauge

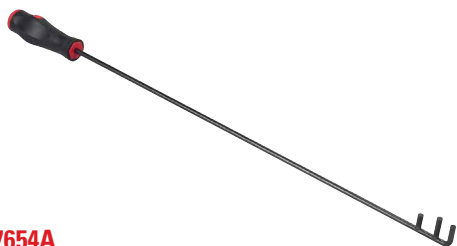
- Belt tension gauges are used to check drive belt tension on drive belts to ensure maximum belt and bearing life.
- Scale reads 30–180 lbs.



4645

Serpentine Belt Tool

- Fits tensioner pulleys with 13 mm–16 mm, 18 mm hex or 3/8" and 1/2" square drives.
- For hard to access tensioners; there are 13 mm and 15 mm 12-point wrenches built into the handle.
- 13 mm, 14 mm and 15 mm crows foot wrenches also included.



7654A

Serpentine Belt Installation Tool

- Durable tool provides extra control and reach during serpentine belt installation.
- Works equally well on V-belts and timing belts.
- Three-pin design for immediate push/pull capacity.
- Handle gives technician twisting control to install belts in confined, hard-to-reach areas.



4531

Harmonic Balancer Puller/Installer Set

- For easy removal of most harmonic balancers and drive pulleys which are press-fitted onto the crankshaft. A bearing-centered circular 2/3-way puller flange and an assortment of metric and fractional bolts and adapters provide wide coverage.
- A heavy-duty, 3/4" dia. forcing screw is internally threaded to fit the eight adapters to install harmonic balancers. Adapter sizes included: M16 x 2.0, M14 x 1.5, M12 x 1.5, 3/4"-16, 5/8"-18, 9/16"-18, 1/2"-20 and 7/16"-20.
- A blow-molded plastic storage case keeps set contents organized and protected.



4754

Universal Pulley Holder

- Universal design fits many different size pulleys having slots or holes, such as camshaft pulleys or crankshaft pulleys.
- Wrench is adjustable from 1-1/2" to 8-5/8"; four different size step pins are interchangeable.
- Long handle enables technician to easily hold the pulley when tightening or loosening retaining bolts.

Pressure Testers



5606

Compression Tester Kit

Designed for complete compression testing on gasoline engines, including domestic, imports, motorcycles, marine, and small engines. Unique problem solving features for today's limited space engine compartments.



5605

Deluxe Compression Tester Kit

Complete with standard and specialty adapters, this deluxe kit offers a complete package for compression testing on gasoline engines. Kit includes the deep well connector used on recessed plug well style heads and the Ford engine adapter using 16 mm thread plugs.



5609

Cylinder Leakage Tester Kit

Quickly diagnose internal engine problems such as bad rings, valves and leaking head gaskets. Kit come complete with adapters for most applications.



5610

Transmission/Engine Oil Pressure Kit

This professional kit can be used for domestic and import applications. High and low pressure gauges make this kit useful for both transmission and engine work. Kit comes complete with adapter for most applications. Designed to be used for both static and on road testing.



REMOVE AND INSTALL SELECT HENDRICKSON HEAVY DUTY REAR SUSPENSION BUSHINGS

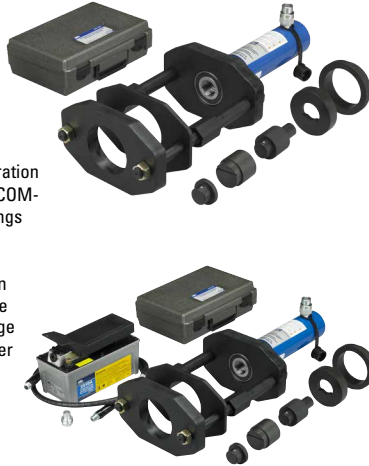


4246

Hendrickson Rear Suspension Bushing Tool Kit

Replace rusted and frozen heavy-duty rear suspension bushings faster and easier

- Patent-pending design is suspension-mounted, eliminating the need to hold the tool during operation
- Remove and install Hendrickson PRIMAAX EX, COMFORT AIR, FCCC V Ride™ Pivot and D-Pin Bushings
- Save time and effort during suspension service to get trucks back on the road faster
- Included adapters align tool with the suspension to ensure proper bushing installation and reduce the chance of misalignment and bushing damage
- Includes an OTC 4106A 25-ton high-force cylinder



4247

- Adds an OTC 2510A air/hydraulic pump to make bushing service faster and easier
- Includes everything in the 4246 kit

5280

OTC Portable Diesel Particulate Filter Cleaner

- Robust design for long shop life.
- High pressure cleaning process for thorough cleaning of ash from DPF – produces 10 times the burst energy of competitive low pressure units.
- Burst Quick Check identifies if filter is too plugged for proper cleaning.
- Movable with locking wheels for placement throughout the shop.
- Computer controlled process based on OE requirements for start-to-finish cleaning without constant technician monitoring.
- Containment of hazardous ash for easy disposal.
- HEPA Filter Air Exhaust System included to exceed shop environmental air standards.
- Operates on standard 115V outlet.
- Proven to clean to over 92% efficiency.
- Third-party OEM test results using pin gauge measurement with approved OTC adapters and burst cycles. Actual results may vary.



5286

OTC Portable Diesel Particulate Filter Cleaner

- The advent of the 2010 Tier 4 cleaning requirements created the need for a lighter, more portable cleaning system which can be taken into the field to clean filters at the point of service.
- Lightweight and Highly Portable - ideal cleaning system for use in the shop or on a service truck.
- Flexibility - clean DPF's from 6" to 15.5" in diameter using shop or compressed air of at least 100 PSI.
- Fully Automated Operation - once started, the cleaning process can be completed unmonitored, freeing up technician to simultaneously do other work in the shop.
- Focused Air Jet Technology™ - concentrates a precise high pressure stream of air directly into every cell.
- Maximum Efficiency - OTC's unique floating puck prevents "splash back," which maximizes the volume of air entering each cell.
- Easy Maintenance - contains no internal filters that require user maintenance and its rugged design provides maximum durability.



Hydraulic Flow Meters

Unparalleled accuracy in testing hydraulic oil flow circuits for vehicles and machinery. All are protected by a durable steel case. Pressure accuracy is at +/- 1.6% of full scale. Due to their standard burst disc protection system, overpressure conditions prevent spillage of hydraulic fluid. All devices accommodate bi-directional flow and are CE marked as appropriate.



4277

50 gpm Mechanical Hydraulic Flow Meter

- Flow Accuracy to +/- 4% of full scale
- Measures flow from 4 to 54 gpm
- Pressure up to 6000 psi
- Fluid filled analog gage that dampens vibration
- Temperatures up to 230 deg F
- Reads flow in one direction
- No batteries required
- Port is 1-5/16" -12 UN JIC Male
- 12.25" x 4.125" x 4.875", weight 14.5 lbs



4278

100 gpm Digital Hydraulic Flow Meter

- Flow Accuracy to +/- 1% of indicated value
- Measures flow from 2.5 to 100 gpm
- Pressure up to 6000 psi
- Digital display for flow, temperature, analog for pressure
- Temperatures up to 250 deg F
- Reads flow in both directions, pressure on the high side of valve
- Requires 1 9V battery (included)
- Port is 1-5/16" -12UN #16 SAE ORB
- 9.45" x 7.87" x 7.87", weight 14 lbs



4285

100 gpm Digital Hydraulic Flow Test Kit

- Includes OTC 4292 Digital Readout and OTC 4291 Flow Block with Loading Valve
- Flow Accuracy to +/- 1% of indicated value
- Measures flow from 2.5 to 100 gpm
- Pressure up to 6000 psi
- Digital display for flow, temperature, analog for pressure
- Reads flow in both directions, pressure on the high side of valve
- Require 1 9V battery (included)
- Port is 1-5/16" -12UN #16 SAE ORB
- 12.99" x 12.4" x 10.24", weight 17lbs



4290

16 gpm Flow Block

- Can be used with Digital Flow Meter Readout OTC 4292 included in OTC 4285 and OTC 4294
- Port is 1-1/16" -12UN #16 SAE ORB
- Flow range from 1 to 16 gpm
- Max pressure 6000 psi

4291

Flow Block with Loading Valve

- Can be used with Digital Flow Meter Readout OTC 4292 included in OTC 4285 and OTC 4294
- Knob allows for pressure loading/restriction
- Port is 1-5/16" -12UN #16 SAE ORB
- Flow range from 2 to 100 gpm
- Max pressure 6000 psi



4292

Hydraulic Flow Measurement Digital Readout

- For remote flow measurement by using Flow Blocks OTC 4290 or OTC 4291
- Included in OTC 4285 and OTC 4294
- Digital display for flow, temperature, analog for pressure



4294

Deluxe 100 gpm Hydraulic Flow

- Measurement Set
- Comprised of OTC 4290, OTC 4291, OTC 4292, Long Cable and Hose Set and Short Cable
- Case included



20-Ton Truck Ramps

- Long, retractable T-handle enhances mobility.
- Non-skid rubber matting prevents slippage during use.
- Durable, heavy-duty rubber wheels.
- Capacity per pair is 20 tons
- Covered by OTC Lifetime Warranty®.



5268

5268

20-ton truck ramps handle up to 10" tread width.

5269

Wide 20-ton truck ramps handle up to 16" tread width.



5269



1591B

10-Ton Combination Air Lift & Support Stand

- 40" removable handle and 8' air hose.
- Covered by OTC Lifetime Warranty®.
- Capacity – 10 tons (at 200 PSI air).
- Stroke – 10-7/8".
- Minimum height (unpinned, no extension) – 18-1/4".
- Maximum height (pinned in top hole, with extension) – 51-1/4".



1783

Heavy-Duty 20-Ton Capacity Adjustable Support (One only)

- Rugged steel construction, and large 15-1/2" square base will satisfy support requirements up to 40,000 lbs.
- Features include 4-point adjustment. Height range is 15-1/4" to 24". Saddle diameter is 6".
- Covered by OTC Lifetime Warranty®.

Note: Recommend use in pairs.



572913

1590

10-Ton Air Lift

- Adjustable lifting saddles and an extra-wide stance for extra stability.
- Automatic mechanical safety catch engages in five height positions.
- Two large swivel casters and pneumatic tires make it easy to maneuver, even on loose gravel.
- Covered by OTC Lifetime Warranty®.

Specifications:

Capacity – 10 tons (at 200 psi air)
 Air pressure – 100–200 psi
 Lifting range – 13"–52"
 Saddle spread – 29" – 41-3/4"
 Saddle – 4" X 5-1/4"
 Height – 67-1/2"
 Width – 41"
 Length – 36"
 Distance from lift arm to floor support – 12-1/2"

572913

• Optional wide saddle set for 1590, saddle 4" x 5 5/8".

OTC Single Acting Cylinder Rams



		Capacity in Tons	Stroke	Height Collapsed	Height Extended
4100A	5-Ton Single Acting Cyl.	5	3"	5-11/16"	8-11/16"
4101A	5-Ton Single Acting Cyl.	5	5-1/4"	10-7/16"	15-11/16"
4103A	10-Ton Single Acting Cyl.	10	2-1/8"	5-9/16"	7-11/16"
4104A	10-Ton Single Acting Cyl.	10	6-1/8"	11-1/2"	17-5/8"
4105A	10-Ton Single Acting Cyl.	10	10-1/8"	15-1/2"	25-5/8"
4106A	25-Ton Single Acting Cyl.	25	6-1/4"	13-3/8"	19-5/8"
4107A	25-Ton Single Acting Cyl.	25	14-1/4"	21-3/8"	35-5/8"
4108A	5-Ton LP Single Acting Cyl.	5	9/16"	1-5/8"	2-3/16"
4110A	55-Ton Single Acting Cyl.	55	6-1/4"	11"	17-5/16"



7180

Universal Bearing Cup Installer

This handy, adjustable tool is designed to install wheel-bearing cups in a wide range of heavy-duty axles. Simply adjust and lock the jaws to the cup I.D., slip on the new cup, set it in the bore, and drive it in with a hammer. The tool helps eliminate the damage caused by makeshift methods.

- Works on axles from 11,000 to 50,000 lb. capacity.
- Adjusts to fit 3-5/8" to 6-1/2" O.D. bearing cups, which adds up to as many as 30 individual drivers.



Slack Adjust Pullers

These pullers will yank even the most corroded slack adjuster off the S-cam—and do so in just a fraction of the time needed with "heat and beat" methods. Plus, they won't damage components. Both pullers have a rugged forcing screw and cast steel body. Puller

No. 5055 fits many manual types, and the No. 5056 works on Rockwell, Haldex, Gunite, and Bendix automatic adjusters.

5055

Manual slack adjuster puller.

5056

Automatic slack adjuster puller.



5105B

1,100 lb. Capacity High-Lift Dual Wheel Dolly

- Effortless air-powered hydraulic lift system for a variety of applications.
- 0 to 42" lifting range.
- Six-inch lateral adjustment.
- Tilt adjustment of +15° to -8° for easy alignment.
- Features four swivel casters, two locking, for enhanced mobility.



5190A

Heavy-Duty U-Joint Puller

- The ideal tool for disassembling drivelines.
- May be used with up to a one-inch impact wrench.
- Quickly and easily removes sealed U-joint cups without the need for hammering or heat.
- Will not damage the driveshaft, yoke, bearingcups, or joints.
- Fits practically all Class 7 and 8 trucks, including: Spicer driveline 1610, 1710, 1760, 1810, 1880 Spicer SPL 140, 170, and 250 "Life Series" Meritor (Rockwell) 16N, 17N, 18N, 1710Meritor RPL 20 and 25 "Permalube" Series.



1521A
1,000 lb. Capacity Low-Lift Transmission Jack

- Universal mounting head, with adjustable brackets, tilts front to back and side to side for easy transmission alignment.
- Safety chains hold the load securely, even while moving about the shop.
- Wide, stable wheel base with four swivel casters, and two handle grips make it easy to position under the vehicle.
- Safety overload prevents jack from being used beyond its rated capacity.
- Pump handle rotates a full 360° for use in any position.

Specifications:

Min. height is 7-1/2"
Max. height is 29-3/4"
Max. forward tilt – 67°
Max. backward tilt – 17°w
Max. side tilt (eitherside) – 30°
Overall length – 34-1/2"
Overall width – 19.3/8"



1794A
Air-Assisted 1,000 lb. Capacity High-Lift Transmission Jack

- Air-assist primary stage to rapidly raise the head with foot pedal.
- Hydraulic secondary stage for precise control with hand pump.
- Release knob to lower load.
- Safety overload system.
- Wide base with 4" wheels for stability.
- Height range: 37-58" to 76-1/2".
- Max forward tilt: 42 deg.
- Max backward tilt: 46 deg.
- Max side tilt: 12 deg either side.



5106
6-Ton Capacity Air/Hydraulic Service Jack

- Huge steel front wheels are mounted in bearings for trouble-free service life. Rear swivel casters make spotting the jack easy.
- Spring-loaded handle can be locked in three positions.
- Lifting range 4-3/4" to 23-1/4", reach 87", 45" handle.
- Covered by OTC Lifetime Warranty®.



1872
55-Ton Capacity Heavy-Duty Press

- Side-to-side positioning of ram allows full capacity pressing along entire bolster length without buckling or bending.
- Covered by OTC Lifetime Warranty®.
- Includes double-acting ram No. 51682 with 13" stroke; No. 4046 electric/hydraulic pump; No. 9651 gauge; No. 36887 hoses; and pump mounting bracket.



4000
Single-Speed Hydraulic Hand Pump

This single-speed pump is ideal for single-acting rams. Developing up to 10,000 psi operating pressure, the pump operates horizontally or vertically in the "head down" position. Fingertip control provides instant release or pumping action. Has a built-in safety overload valve. Ideal for use with OTC single-acting rams, or similar competitors' rams.



Dualmaster Two-Stage Hand Pumps

4008
Hydraulic hand pump with No. 9584 2-position, 3-way control valve (for operating single-acting rams), and No. 4006 BL2 2-gallon reservoir with legs.

4009
Hydraulic hand pump with No. 9500 3-position, 4-way control valve (for operating double-acting rams), and No. 4006 BL2 2-gallon reservoir with legs.

4082A
4-Ton Cylinder Ram

4-ton ram with 5" stroke and special piston rod end designed to fit most collision repair set components



5130
OTC 1,000 lb. Capacity DriveMaster™ Driveline Lift

- Low profile of 7".
- Lift range: 23" to 30".
- Pivoting pump handle +/- 15° tilt in each direction.
- Includes 553516 differential mounting adapter. Mounts easily using existing bolt patterns. Fits the most common differentials currently in use on Category 7 and 8 Heavy Duty Trucks. Including: Eaton, Fuller, Rockwell, Meritor, Spicer, International, and Mack.
- CE certified, PALD compliant.

Optional adapter kits

- 558382**
Auxiliary box adapter.
- 561949**
Light duty transmission adapter.



1814
6,000 lb. Capacity Heavy-Duty Mobile Floor Cranes

- Three boom positions give capacities of 4,000, 5,000, and 6,000 lbs. to handle the biggest engines, and often the transmission right along with the engine! Usable reach is almost 92".
- Boom swivels for vertical and lateral positioning; legs extend to straddle the biggest tires.
- 6,000 lb. capacity crane with electric/hydraulic pump (115V) with remote motor control.



1806
4,000 lb. capacity Load-Rotor® Positioning Sling

- Use with a floor crane. Engine, transmission, or other component is tilted or leveled by turning sling's 5/8" hex drive end with a common speed handle and socket.
- Has 65-3/4" long chain (5/16") and hook assembly with forged hook on each end. Pair of special lifting brackets included.
- Makes engine removal and installation a snap, even in close quarters.
- For use with floor cranes only; not to be used with overhead hoists or lifts.



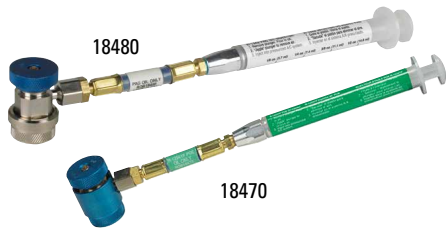
4121
30-ton Power Twin Single-Acting Hydraulic Ram

Complete with No. 21873 threaded ram head insert, ram attaching screws, and No. 9796 ram half coupler.



4020
Air/Hydraulic Pump

- Ideal all-around power source develops 10,000 PSI at 100 PSI air.
- Two-stage release mechanism; internal relief valve.
- 98 cu. inches of usable oil.
- Covered by OTC Lifetime Warranty®.



Syringe-Type Injectors

Use these syringe-type injectors to add oil to a fully pressurized A/C system. Just fill the barrel with the amount of oil needed, connect the injector, and press the plunger.

18480 – R-134A oil injector, PAG labeled

18490 – R-134A oil injector, POE labeled

18460 – R1234YF oil injector, Generic

18465 – R1234YF oil injector, PAG labeled

18470 – R1234YF oil injector, POE labeled

Not recommended for UV dye injection.

16009

DiscovR Refrigerant Identifier

- Fast and Accurate. "Pass" and "Fail" lights clearly show if refrigerant is pure enough to be recovered.



Product Specifications:

Refrigerant: R134a
 Input Power: 12 VDC
 Accuracy: Pass/Fail - 95% pure R134a
 Air Detection: Yes
 Approvals: SAE J1771, UL/C

TIF-ZX

Heated Pentode® Refrigerant Detector

- Heated Pentode® sensor technology
- Tri-color visual leak size indicator
- Detects all CFC, HFC, HCFC's including R-12, R-22, R-123, R-134a, R-404a, R-407a, R-408a, and R-410a.



75700

CoolTech Coolant Exchanger

- Our 10 minute exchange process means no more waiting for the engine to warm up!
- "Engine Off" feature removes pulleys, belts, and fan blades from the safety equation.
- Vacuum mode creates a "push/pull" exchange process allowing the technician to safely remove high pressure in a hot system.
- Leak check feature allows the technician to test for leaks prior to refilling.
- Two clearly marked valves and an easy-to-read gauge make this machine very easy to use.
- No electricity required. 90 psi shop air drives the exchange process, as well as the 2 gpm pump on the waste tank.
- Two external new coolant supply tanks allow on-board storage of two different coolant types.



75240

Coolant and Battery Refratometer

Coolant scale range:
 32° F/0° C to -60° F/ -51° C.



Econo-Clean Coolant Service Accessories

75134
 Coolant test strips.

75234
 3-way heavy-duty truck coolant test strips.



Robinair Manifolds

41234

R1234yf Aluminum Manifolds and Hose Set

- Easy-to-read 3-1/8" adjustable gauges.
- Durable aluminum manifold block with fittings.
- Improved face seal valves provide a tight seal, less wear and improved flow.
- Easy-to-grip control knobs.

2-Way Aluminum Manifold (R134A)

- 90° Manual couplers
- 72" R134a Hose Set (1/2" ACME x 14mm)



2-Way Brass Manifold

- 45111
 R134a Manifold Hose Kit



Economy Manifolds

- 48134A
 R134 brass manifold, hose set and service couplers



- 49134A
 R134 aluminum manifold, hose set and service couplers



Robinair Vacuum Pumps

VacuMaster® Single Stage Vacuum Pumps

- 15115
 1.5 CFM Vacuum Pump.
- 15310
 3 CFM Vacuum Pump.
- 15510
 5 CFM Vacuum Pump.



VacuMaster® 2-Stage Vacuum Pumps

- 15150
 1.5 CFM Vacuum Pump.
- 15300
 3 CFM Vacuum Pump.
- 15500
 5 CFM Vacuum Pump.



CoolTech® Vacuum Pumps

- 15434
 4 CFM Vacuum Pump.
- 15600
 6 CFM Vacuum Pump.



18410 Hydraulic Flaring Kit

- Fabricates a variety of fuel, brake and A/C line flares.
- Push connect 1/4, 5/16 and 3/8".
- GM fuel line, brake line and transmission 5/16 and 3/8".
- Flare and double flare.
- Metric bubble flare.
- Comes in a custom blow molded case.

34288

A/C Recover, Recycle, Recharge Machine

- The 34288 combines simple operation with superior accuracy. It recovers, recycles, evacuates, and recharges R-134A quickly and accurately.
- Meets SAE J-2788 standards recovering 95% refrigerant and charging to +/- 1/2 oz.
- Automatic Oil Drain: A display reminds you to empty the graduated container to show the amount of oil to replace.
- Automatic Air Purge: Eliminates damaging air without monitoring gauges or opening valves.
- Displays refrigerant use and monitors remaining filter life. Prompts appear when 1/3 of filter life remains.



UV Leak Detection Kits

- The easiest and most accurate gun available today.
- No guesswork – a pre-measured application every time.
- One squeeze injects a pre-measure amount (1/8 oz.) of dye. No more adding too much dye.



16234

16235

The best way to service A/C



Robinair provides the industry's most dependable A/C machines, and that continues with the new 34788NI and 34788NI-H for high voltage systems. A new, compact design with fully automatic operation means less downtime and more profit from A/C service.

Unmatched 98.5% recovery

Robinair introduces its next innovation, the 34788NI and 34788NI-H, featuring an industry-leading 98.5% recovery efficiency for standard and hybrid vehicles and fully automatic function.

34788NI

Premier R-134A Refrigerant Recovery, Recycling, and Recharging Machine

- Fully-Automatic Function: Program to recover, vacuum, leak test and charge without operating panel valves.
- Automatic Oil Drain: A display reminds you to empty the graduated container to show the amount of oil to replace.
- Oil Inject: Automatically inject oil back into the vehicle's A/C systems.
- Refrigerant & Oil Database: A/C system capacities for North American market vehicles.
- Automatic Refrigerant Refill: Maintains a user-selectable amount of refrigerant in an internal vessel and signals when it's time to change supply tank, no monitoring required.
- Optional Printer.

34788NI-H

Electric Vehicle: Capable of servicing high voltage electric compressor A/C systems.



1234YF A/C Service

Fully automatic operation — program for service, walk away and return when complete.

AC1234-6

- 95% recovery efficiency
- Programmable vacuum operation helps get to the necessary vacuum level in any condition quickly.
- System leak test to identify gross leaks in a system.
- Charge accuracy within +/- 1/2 oz.
- Automatic oil drain shows how much oil was removed from the system during service.
- Automatic air purge removes the potential of air accumulating in the internal tank.
- Integrated refrigerant identifier (meets SAE J2927)
- Liquid refrigerant flushing function can flush A/C systems or individual components using liquid refrigerant instead of harsh chemicals.
- Automatic internal tank refill. No stopping to fill the internal tank during service, or before service.
- 1/4 Color VGA display. Large easy to read graphical display
- On-board printer capable of printing vehicle service report slips to present to customers.



Not responsible for errors in description. / 16-90 Q4 2016 Edition, Printed in U.S.A.

The new 34988NI features the same Unmatched 98.5% recovery

34988NI

Premium Refrigerant Recover, Recycle, Recharge Machine

- Fully automatic operation frees technician to perform other tasks while servicing the vehicle's A/C system.
- Automatic oil drain and inject feature enables the machine to measure amount of oil removed from the vehicle and automatically puts the same amount back in free the user from measuring the amount of oil removed.
- Multiple oil bottles gives the machine the flexibility to store and inject two different types of oil saving the user time when servicing multiple vehicles.
- Large, easy-to-read graphical display.
- Standard onboard printer gives the user the ability to print service data to present to a customer after service.
- Unique Automatic Refrigerant Refill maintains a user-selectable amount of refrigerant in an internal vessel and signals when it's time to change supply tank, no monitoring required.
- Programmable vacuum feature defaults to 15 mins, but allows the user to select desired vacuum time up to 99 minutes.
- Automatic Air Purge eliminates system-damaging air without monitoring gauges or opening valves.
- Save before and after service data allows the user to store before and after service information by vehicle.
- Visual and audible alarm notifies the user when service is complete, or if a problem has occurred.
- Automatic Dye Inject gives the user the ability to use the machine to inject UV dye into a vehicle's A/C system.
- Optional refrigerant and oil database includes A/C charge and oil capacities for North American market vehicles.

