

MUSCLETOOLS

Electronic Diagnostics | Special Tools | Shop Equipment | A/C Tools

Q2 2017 Edition

OTC ROBINAIR actron BOSCH

Purchase an ESI[truck] HD diagnostic tool and receive a 3167-HD

The most complete heavy-duty diagnostics coverage

- Covers multi-brand heavy-duty trucks and engines
- Perform special tests and parameter resets



Receive a free 3167-HD Heavy-Duty Battery and Electrical System Diagnostic Tester

See page 4 for ESI[truck] tools.

PROMOTIONS

New year, new tool deals. All promotions valid April 1, 2017 through June 30, 2017. Redeem at Boschrebates.com. Dated proof of purchase required. Must redeem by July 31, 2017.

Coolant & Transmission Exchanger Rebates

Buy an A/C machine plus one fluid exchanger and receive a \$300 rebate



Buy an A/C machine & both fluid exchangers to receive a \$600 rebate



92500
Transmission
Fluid Exchanger



75700
Coolant
Exchange

See page 15

Buy ESI[truck] (3824), DPF Cleaner (5280) and a DEF Refractometer (5025), get 10% rebate



ESI[truck] (3824)



DPF Cleaner (5280)



DEF Refractometer (5025)

See pages 4 & 12

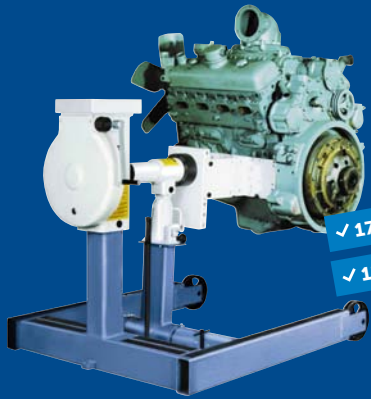
RECEIVE A FREE ACCESSORY WHEN YOU BUY AN OTC LIFT



Eligible Presses	Free Accessory
Buy 5130	558382 or 561949
Buy 1590	572913

See page 13 or visit otctools.com

**BUY A 1750 OR 1750A ENGINE STAND AND ADAPTER*,
GET \$150 OR \$200 REBATE**



✓ 1750 + ADAPTER* = \$150 REBATE
✓ 1750A + ADAPTER* = \$200 REBATE

For a list of eligible Adapters visit otctools.com/promotions

**Buy CP7665 & CP7852,
get a \$10 gift card.**



Digital Multimeter

CP7665



Automotive Logic Tester

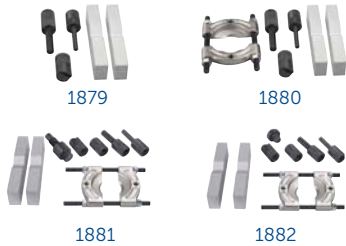
CP7852



**RECEIVE A FREE
ACCESSORY WHEN YOU
BUY AN OTC PRESS**



1826



1879

1880

1881

1882

Eligible Presses **Free Accessory**

Buy 1823A or 1824A	1879
Buy 1825	1880
Buy 1826 or 1826A	1881
Buy 1850 or 1851	1882

Win an
Indianapolis
stock car race
experience



Enter to win at
BoschPerformance.com/sweepstakes

**BUY ENCORE
AND 6522
LEAKTAMER,
GET \$300 REBATE**

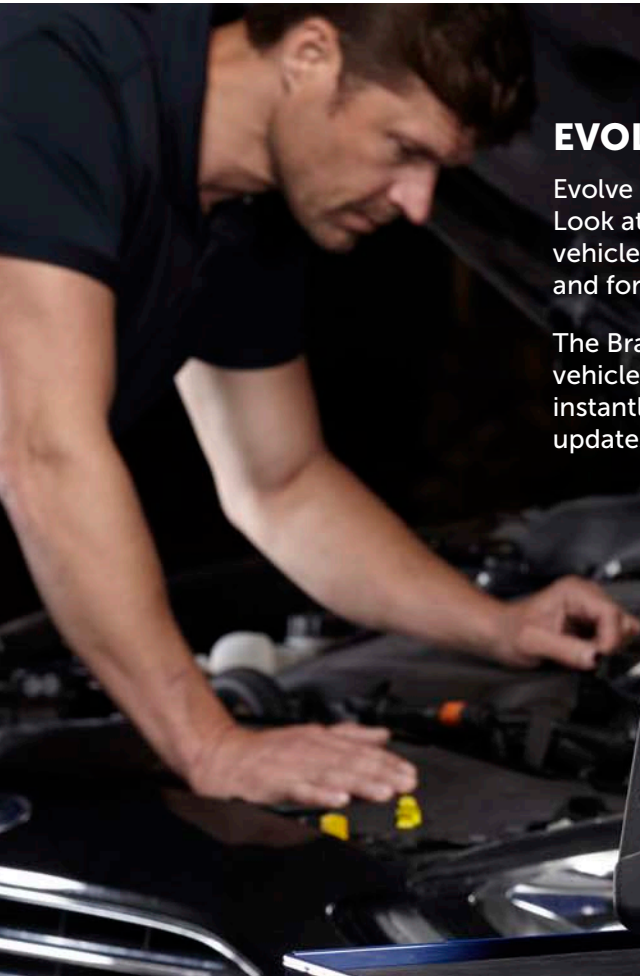


3893

✓ 30+ MILLION REPAIRS
✓ FIX CARS FASTER
✓ LIFETIME WARRANTY*



6522



EVOLVING DIAGNOSTIC SOLUTIONS

Evolve is a professional diagnostics repair suite from OTC and Bosch. Look at codes, PIDs, data sets and likely repairs without ever leaving the vehicle. Evolve connects directly to Identifix, iATN and other repair networks and forums to help you fix faster at the vehicle*.

The Bravo 3.0 software is easy to use and fast. AutoID most CAN vehicles in less than 5 seconds. Access on-tool repair information almost instantly to test and fix more vehicles faster. Includes one year of diagnostic updates, giving you more coverage, tests and repairs.

NEW

EXCLUSIVE ON-TOOL WIRING DIAGRAMS

Exclusive on-tool wiring diagrams for vehicles 1986 and newer help you locate trouble components to test or replace.

Wireless vehicle communication

Dual WiFi architecture keeps you connected to the vehicle and shop Internet to access troubleshooting and repair info.

J2534 reprogramming capable**

The included wireless VCI doubles as a powerful J2534 pass-through device, expanding your shop's ability to fully service and reprogram customer vehicles.

Identifix on-tool

Direct-linking to Identifix for most diagnostic codes. OTC automatically transfers YMME to help you diagnose and fix with accuracy and confidence.

* Must have active subscription status with Identifix or IATN.

** Compliant with top 6 manufacturers. Reprogramming requires additional Windows-based PC and OEM software, purchased separately.



3896 EVOLVE DIAGNOSTICS

Kit includes:

- Rugged 10" shop-tested scan tool
- Wireless VCI with J2534 reprogramming capabilities
- Bravo 3.0 software powered by Bosch with exclusive on-tool wiring diagrams
- Charging / docking station with AC adapter
- Padded, protective storage and carry bag
- 5' OBD II cable
- USB cable
- 60-day Identifix Direct-Hit free trial
- One year of diagnostic updates

Made in USA with Globally Sourced Components

Available now –
**13,000 confirmed
HD diagnostic fixes**

New ESI[repair] subscription service with 13,000 trouble code fixes.

Free trial for new tool owners.
Confirmed fixes based on module, code and truck configuration.

Visit boschdiagnostics.com/pro to learn more.



ESI[Truck] HD Diagnostics

Unmatched Coverage and Repair Information at the Truck

The most complete diagnostic coverage for multibrand heavy-duty trucks and engines, performing special tests and parameter reset capabilities.

NEW REPAIR INFORMATION SUBSCRIPTION SERVICE

ESI[repair] subscription service for ESI[truck] includes 13,000 experienced based fixes. The tool includes fixes specific to trouble codes and symptoms with repair information viewed while still in diagnostic mode.

Truck COVERAGE

Trucks: Freightliner, International, Kenworth, Mack, Volvo, Peterbilt, Sterling, Westernstar, MD Trucks (Freightliner Sprinter Van, Isuzu, GM and Ford).
Trailer ABS Controllers; Allison & Eaton Transmissions.

ENGINE COVERAGE

Heavy-duty engines – Caterpillar, Cummins, Detroit Diesel-MBE, Deutz, Mack, MTU, Navistar, PACCAR, Perkins and Volvo. Medium and light duty engine software included.



3824

WINDOWS 7 TABLET SCAN TOOL

Includes VCI, 6 pin and 9 pin cables

3824BSC

SCAN KIT

- Use with your shop PC
- Includes Bosch diagnostic software, VCI, 6 and 9 pin cables.

3824-06

Bosch ESI[truck] Trailer Adapter

7-pin PLC adapter for trailer ABS diagnostics

- J2497 Power Line Carrier (PLC) communication compatible
- Allows direct connection to trailer
- Works with tractor present or without the tractor present
 - External power supply is necessary without tractor
- Bosch ESI[truck] trailer ABS coverage for Bendix, Haldex, Meritor Wabco and Wabash systems

3824-08

Bosch ESI[truck] License Renewal 12-Month Security Card

3824-08R

Bosch ESI[truck] Repair Information Subscription 12-Month Security Card



3824



3824-06



Watch the tool used at a local shop.



3840F

Automotive Scope

The exclusive vehicle-specific database in the 3840F contains information for most domestic vehicles as well as many imports. The Scope also recommends the appropriate test procedures for fast, accurate repairs. Visible on the screen are diagrams showing pin numbers and wire colors for both the PCM and the component connector.

3415

CAN Test Box Breakout Box for Scan Tools

- Connects between Diagnostic Link Connector (DLC).
- Connect leads for increased diagnosis, analysis, and monitoring.
- Useful Functions
 - LEDs display signal detection – Flashing LED's
 - Magnifies DLC
 - Displays battery voltage with warning



TPMS Service Made Easy With OTC

The expected lifespan of tire pressure monitoring system (TPMS) sensors is between 7 and 10 years, meaning many vehicles coming into your shop are already in need or going to be in need of replacement sensors. Use this opportunity to educate your customers on the importance of the TPMS sensors – safety, vehicle awareness and peace of mind.

OTC recently brought a new standalone OBDII TPMS tool to market with basic diagnostics capabilities. Think of it as a TPMS tool with a built-in enhanced code reader. Plug the dongle in to the OBD II port and scan each tire's TPMS sensor. The vehicle will learn and register the sensor position and PSI almost instantly, allowing the relearn procedure to take less than 10 minutes.



3838

Standalone TPMS Tool with Bluetooth OBD II

The OTC 3838 is both a sensor activation and diagnostic device that features a wireless OBD II module for TPMS sensor registration. The tool works with all OEM and aftermarket sensors.

- Exclusive wireless OBD-II module for TPMS sensor registration.
- Standalone TPMS tool with activation, relearn and diagnostic capabilities.
- Three years of software updates included.
- Allows for cloning of universal sensors.
- KEY FOB signal test and infrared print capabilities.



OVER 26 MILLION VERIFIED FIXES, COLOR SCREEN, ADDED EUROPEAN COVERAGE & MORE!

3210

NEW



OBD II, CAN, ABS & AIRBAG

EPB BRAKE CALIPER RESETS, BRAKE BLEED TESTS, BMW BRAKE ZEROING TEST

STEERING ANGLE RESETS

POWERTRAIN & ABS DATASTREAM

ABS COVERAGE

1996-2012 Audi, BMW, Jaguar, Land Rover, Mercedes Benz, Smart, Volkswagen, Volvo
1996-2013 GM, Ford and Chrysler
1996-2013 Toyota, Honda, Hyundai and Nissan

AIRBAG (SRS) COVERAGE

1996-2013 GM, Ford and Chrysler
1996-2013 Toyota, Honda, Hyundai and Nissan

ENHANCED CODE REQUEST

For GM, Ford, Chrysler, Honda, Hyundai, Nissan, Toyota, Audi, BMW, Jaguar, Land Rover, Mercedes Benz, Smart, Volkswagen, Volvo vehicles

BATTERY AND OIL LIGHT RESETS

Reset battery life for late model BMW, Ford F-Series trucks and Mini Coopers. Reset oil life to 100% and turn off the change oil light.

MPG FUEL MILEAGE CALCULATION

Displays Instant MPG, Average MPG, Elapsed Time, Distance (MI), Fuel Used (GAL) and Average Speed (MPH) with the ability to alternate between English and Metric units on screen.

CODECONNECT® WITH OVER 26 MILLION TOP REPORTED FIXES*

The most probable solution to the vehicle problem that is specific to code and the vehicle year, make, model, engine.

3208



OBD II & ABS Scan Tool

- Read ABS code and definitions for most 1996-2013 GM, Ford, Chrysler, Honda, Hyundai, Nissan and Toyota vehicles.
- View live engine data.
- Read/erase hot keys.
- View all available I/M Monitors and freeze frame data.
- Automatically reads DTC's (Diagnostic Trouble Codes) when connected for fast diagnostics.
- Works on all 1996 and newer vehicles (OBD II & CAN).

3209



Trilingual OBD II, ABS & Airbag Scan Tool

- Color screen.
- ABS & Airbag code and definitions for most 1996-2013 GM, Ford, Chrysler, Honda, Hyundai, Nissan and Toyota vehicles.
- Battery, Alternator & Charging System Monitor.
- Graph, record and playback live date.
- Full manufacturer specific code definitions.
- Updateable – USB update cable included.
- Live engine data.
- AutoID® – Automatically selects the vehicle on most 2000 and newer vehicles.
- View all OBD II global data including Modes 5, 6 & 8.

Test battery voltage and CCA in less than 10 seconds

Quickly test charging and starting system health without disconnecting leads



Watch the tool used at a local shop on a 2000 Celica here:

- Download the OTC3200 app from the Google Play or iTunes store. View battery test data by scanning the device QR code*. Instructions included on testing device.
- All light duty applications - test 6V, 8V and 12V lead acid and AGM batteries
- Diagnose bad batteries faster – an internal 9V battery allows testing for deeply discharged batteries
- Share your test results – print, save or email a customer friendly color report
- Confidently recommend repairs – use your smart phone or tablet camera to embed photos into customer reports
- Sync feature sends information to all phones used in your shop so every tech can access reports by vehicle.

*Smart devices paired with the tester must have auto-focusing rear-facing camera to meet full requirements



3183 OTC Digital Battery Tester

Speed. Accuracy. Reliability. These are the cornerstones behind the technology in our digital battery testers. Test 12-volt batteries (125–1400 CCAs) and analyze by measuring multiple parameters within the battery to deliver accurate results. A live voltmeter allows easy starting/charging system testing. Its bright, 4-digit LED display indicates battery status, voltage, and available CCAs. Compensates for cold temperatures.



Professional Memory Saver

- OBD II cable for fast connection to the vehicle
- Cigarette lighter adapter for use with vehicles that do not have an OBD II connector
- LED lights confirm circuit between the cigarette lighter/ power outlet and the vehicle's battery with the ignition on or off
- State of charge indicator identifies when the memory saver needs to be plugged in for recharge
- Resettable fuse protects against excessive current draw through either the OBD II connector or the vehicles cigarette lighter
- High capacity, rechargeable sealed lead acid battery for extended service between charges



4639 Battery Terminal Service Kit

Seven favorite battery tools, housed in a rugged, vinyl-coated fabric pouch. Kit includes: a heavy-duty battery terminal puller, 4-way battery post cleaner and reamer, angled battery nut pliers, GM 5/16" battery terminal ratchet wrench, extra long 5/16" terminal ratchet wrench, 10 mm battery terminal ratchet wrench, and side terminal battery brush.



3176 Smart Battery Charger and Maintainer

Utilizes switching technology which helps restore batteries that are slightly sulfated. Switches to float mode after the battery is completely charged.

- Maintains the battery charge level during vehicle programming.
- Charges deep discharged batteries in about 12 hours.
- Application: Lead Acid (FLA, AGM, GEL).
- Maintains battery charge level if the vehicle or the battery needs to be stored for an extended period of time.
- Easy to read LED lights to show the status of charging and battery condition.

HD Battery Testers



3167 Battery & Electrical System Diagnostic Tester

- Digital circuitry precisely controls battery test loads to accurately determine battery conditions.
- Tests both flooded lead acid and AGM/gell cell batteries accurately—down to 1 volt state of charge.
- Tests vehicle starting and charging systems with minimal user interaction.
- Tests all 6- & 12-volt batteries with a 50-2000 CCA operating range.
- Scales: CCA, CA, AHR, MCA, JIS, DIN.
- Removable/auto-sensing leads. (3' leads included in kits, optional 10' leads available.)
- Optional amp clamps for current drain tests and starting/charging measurements.
- Includes SABRE HP, 3' test leads, side-post terminal adapters, instruction manual, and molded-plastic carrying case.

OEM tools



F00E9016307HH

The Ford Vehicle Communication Module II (VCM II)

- Authentic OEM diagnostics for Ford, Lincoln and Mercury Vehicles.
- Customer Flight Recorder (CFR) functionality with an optional pendant cable.
- Four LED indicators and signaling device providing technician with continuous visual as well as audible operating status.
- Enhanced 802.11 wireless that minimizes dependencies on service department wireless capability infrastructure.

F00E9016297HH*

Includes VCM II, VCM to Laptop cable, USB wireless cards, and DLC cable.

F00E9016307HH*

Includes all contents of F00E9016297HH plus CFR kit.

*Software license sold separately.

Ford and VCM II are used under license from Ford Motor Company.

F00E9009777HH

Tech 2 Pro Optima

The only authentic General Motors Tech 2 scan tool with full, dealer-level diagnostics. Includes preloaded software that doesn't expire.



Genisys EVO® Software

3421-152

2015 Super Bundle Kit

- Everything needed to update a Genisys EVO
- Includes 2015 Domestic/Asian, 2014 Euro. and preloaded System 5.0 memory card



3421-153

2015 Software Loyalty Kit

- Designed for customers who already have System 4.0 and newer.
- Includes 2015 Domestic/Asian & 2014 Euro.



3421-154

2015 System 5.0 4GB Memory Expansion Kit

- Pre-loaded with 2015 application software
- New applications require a separate purchase



Encore/Genisys Touch HD



3895-07

OTC Heavy-Duty Standard

- Class 4 - 8 HD Standard truck Coverage
- Read / erase codes and view live engine data



3895-08

OTC Genisys Touch 12 Month Software Subscription

Genisys Touch Domestic, Asian and European Software 12 month subscription kit provides a year of frequent and valuable updates for new coverage, coverage enhancements, repair information and application improvements.

3834T

OTC TPR Activation Tool VEHICLE COVERAGE THROUGH 2016

- Can be used as standalone tool or with Evolve, Encore or Genisys Touch scan tools.
- Works on vehicle TPMS sensors through 2016.
- Bright graphic display and simple navigation buttons enable vehicle selection for fast activation.
- Automatically adjusts activation output power to eliminate cross activation of near sensors.
- Tool includes a 6 month update subscription from www.tpmsupdates.com



Fasteners



5900A

Master TORX® Socket Set

52-piece, professional socket set in a blow-molded case. Hundreds of applications from front to rear on cars and trucks:

- Seat belt bolts
- Interior and exterior trim screws
- Engine assemblies
- Tail lamp lenses & assemblies
- Bumpers
- Headlight bezels
- Door strikers & latches
- Brake rotor bolts
- GM front-wheel drive front wheel bearings
- Truck box liners
- Styles available: TORX, TORX PLUS, tamper-resistant TORX and external TORX.
- Made from superior S2 steel to meet or exceed torque specifications.



6100



5933

TORX® Individual Socket Sets

6100
Standard TORX® Socket Set T10 – T60 (12 pc)

6150
External TORX® Socket Set (7 pc)

5905
Tamper-Resistant TORX® Plus Socket set (11 pc)

6145
Tamper-Resistant TORX® Socket set (7 pc)

5931
External Torx® Plus Socket Set (8 pc)

5942
XZN Super Short Socket Bit Set (8 pc)

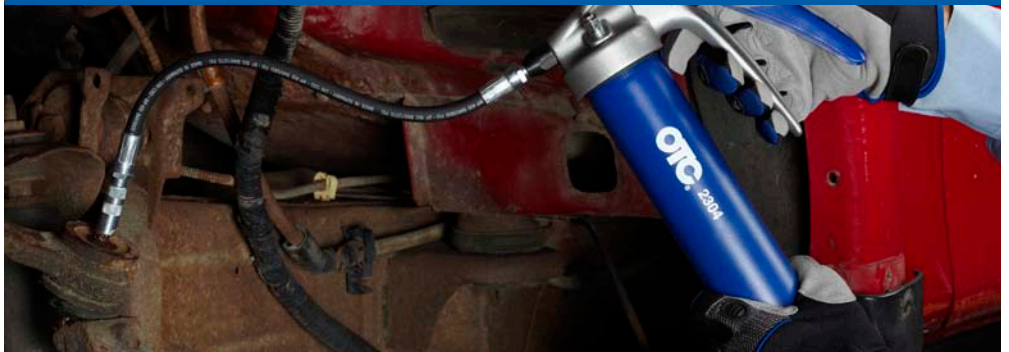
6160
Fraction Hex Socket Set (7 pc)

6170
Metric Hex Socket Set (7 pc)

6180
TORX® Plus Socket Set (9 pc)

5933
MortorQ® Super Bit Set (5-piece) (5 pc)

Lubricant Service



2300

Professional Lever Grease Gun

- Heavy Duty Die Cast Aluminum Grease Gun Head.
- Grease Gun Head Fitted with Automatic Air Bleeder.
- Large Diameter Piston for working in cold.
- Built-In variable stroke for greasing fittings with limited access.
- Includes 6" Bent Steel Extension, Easy access 24" High Pressure Grease Hose & 3 Jaw Slim Coupler.
- 10,000 PSI.
- For use with 14 oz. grease cartridge.



2304

Professional Pistol Grease Gun

- Heavy Duty Die Cast Aluminum Grease Gun Head with integrated die cast Fixed Handle.
- Grease Gun Head Fitted with Automatic Air Bleeder.
- Large Diameter Piston for working in cold.
- Built-In variable stroke for greasing fittings with limited access.
- Includes 4" straight steel extension, easy access 24" High Pressure Grease Hose and 3 Jaw Slim Coupler.
- 7500 PSI.
- For use with 14 oz. grease cartridge.



2310

Air Operated Grease Gun-Continuous Flow

- Heavy Duty Die Cast Aluminum Grease Gun Head.
- Grease Gun Head Fitted with Automatic Air Bleeder.
- Larger Pumping Chamber, honed for rapid operation.
- Includes 6" Bent Steel Extension, Easy Access 24" High Pressure Grease Hose and 3 Jaw Slim Coupler.
- 4800 PSI.
- For use with 14 oz. grease cartridge.



2332

Quick Connect Greasing Accessory Kit

- 7 piece Quick Connect Greasing Accessory Kit
- Includes 1 each of the following Quick Connect Accessories:
 1. Recessed Lube Adapter.
 2. Angle Lube Adapter.
 3. Narrow Needle Nose Adapter.
 4. Seal Off Dispenser.
 5. Right Angled Grease Coupler.
 6. Heavy Duty Hose fitted with Spring Guard and Slim Coupler.
 7. Grease Injector Needle 1.42" Long x 18G.



2340

Heavy Duty Grease Gun Holder

- Great Grease Gun Storage accessory.
- Can be mounted to walls, machinery, or heavy equipment.
- Design to retain your grease gun in high vibration environments.
- Works with all standard 14 oz. Grease Guns and 16 oz. Suction Guns.



2359

Suction Oil Gun

- For use with gear oils to get them both into/out of gear boxes, transfer cases and differentials.
- 16 oz capacity and 14" hose.

Fuel Injection kits

7448A Canister-type Fuel Injector Cleaner

Simply and completely clean a vehicle's fuel system with the 7448A Fuel Injector Cleaner.

With the addition of a quick-connect fitting, the removable hose can be thoroughly cleaned for storage and extending the life of the product. An included blowout fitting adapts to shop air supply to remove residual cleaner from hose lines.



Fuel Injection Application Manual covers vehicles from 1997 - 2013.



6550 Master Fuel Injection Kit

Test fuel injection systems on most GMs, including GM TBI, Ford, Chrysler, and Jeep vehicles. Also works on imports, including CIS and CISE fuel systems.

- 0-100 PSI fuel pressure gauge.
- 35 of the popular OTC fuel injection adapters, each equipped with a quick-connect Schrader valve.
- '97 - '13 Fuel Injection Service Application Manual.
- Replacement seal kit also included.

4 PIECE ROLLING HEAD PRYBAR SET

INCLUDES A FREE PAIR OF OTC SMARTTECH WORK GLOVES (L)



7176

Includes 6", 12", 16" and 21" lengths for a variety of duties - small - large and in between. Heated to cherry red, upset, then forged and swaged processing creates the tool, then our special thermal treating process locks in the strength you count on. Guaranteed for life.



4480 Basic Fuel Injection Service Kit

- Performs running, residual, rail and flow rate pressure tests.
- Kit includes adapters, hoses and fittings to test fuel injection systems.
- Kit includes two popular adapters for import vehicles as well as the GM TBI adapter.
- Professional dual scale gauge reads 0-100 PSI and 0-700 kPa with relief valve, fuel discharge hose and rubber boot.
- Packaged in blow molded carrying case.



6550PRO Pro Master Fuel Injection Service Kit

Covers 100% of vehicles sold in North America '97-'13. Perform fuel pressure testing, diagnose weak fuel pumps or restricted filters, test for fuel flow and perform leak-down tests. Use to clean injectors and intake systems. Kit includes:

- 0 - 100 PSI Fuel Pressure Gauge.
- 47 of the popular OTC fuel injection adapters, each equipped with a quick-connect Schrader valve.
- '97 - '13 Fuel Injection Service Application Manual.
- Replacement seal kit also included.

7175

3 Piece Indexing Pry Bar Set

- Sizes 10", 12" and 15".
- Indexible to 180° for better access.
- 14 locking positions for leverage in multiple applications.
- Knurled handle assures a sure grip.
- Meets or exceeds ANSI specifications for pry bars



6554 Fuel / AC Line Disconnect Kit

- Topside disconnects for AC and Fuel lines.
- Clips, disc, and scissor styles for broad applications.
- Hi-visibility line plugs included.

7000A Pro Inject-R Kleen Fluid

Clean fuel injectors mean cleaner running, more efficient engines - and lower emissions. This fluid restores injectors' original spray pattern, helps prevent recurring problems, and reduces intake and port deposits.

- No mixing; use right from the can.
- Pro Inject-R Kleen fluid. Case of 12 16-oz. cans.



6599 Fuel Tank Lock Ring Wrench

- Universal design allows tool to fit fuel tank lock rings on Ford, Chrysler, and GM vehicles with gas engines.
- Works on: 2004-newer Ford F-150 trucks; 2004-newer Chrysler / Dodge minivans, PT Cruiser, Dakota, and Durango; 2004-newer Chevy 1/2-ton and 3/4-ton trucks; and 2005-newer Jeep vehicles.
 - Tool easily removes and installs lock ring on the fuel tank when servicing the fuel pump or fuel sending unit.
 - Used with a 1/2" drive ratchet or breaker bar.

4484

Weather Pack Ratcheting Crimper Kit

Manage environmentally-sealed connection systems with the OTC 4484 Weather Pack Crimper Kit. Weather pack connection systems are designed to protect against exposure to heat, moisture and contaminants. Includes:

- Two interchangeable crimping dies coverage wire range AWG 22 / 20-18 (DIN: 0.35 / 0.5-0.8mm) and AWG 16-14 / 12 (DIN: 1.0-2.0 / 3.0mm).
- Dies are magnetically secure and easily changed.
- Instructions clearly illustrate how to create a weather-proof seal.
- Connections found on motorcycles, Class 7 - 8 tractors, automobiles and more.

Pliers & Cutters



4512

Snap Ring Pliers Set – Internal/External

- For internal or external snap rings; thumbscrew permits quick conversion.
- Made of heavy-gauge tempered steel.
- Includes two stainless steel handled picks.
- Contained in a blow-molded plastic storage case.



4513

Heavy-Duty Snap Ring Pliers Set (2 piece)

- Heat treated steel "circlip" pliers for large equipment repair.
- Replaceable tips and spring ratchet locking mechanism to securely hold against snap ring tension.
- Internal pliers' capacity 3-1/16" to 6-1/4" (78 mm to 159 mm) snap rings.
- External pliers' capacity 3-1/2" to 6-1/2" (89 mm to 165 mm) snap rings.
- Blow-molded storage case includes extra sets of replaceable tips.
- Overall length 16"; handle length 12-1/2".



4514

Mini Snap Ring Pliers Set (4 piece)

- Service S-ring and R-ring clips, internal or external, straight or angled. Ruggedly built of heat-treated chrome molybdenum steel.
- Set includes two internal snap ring pliers (one straight, one 45°) and two external snap ring pliers (one straight, one 45°).
- All pliers have .038" (1.0mm) diameter tips.
- Overall length 3"; handle length 2".

NEW



2497

3 Piece Push Pin/Body Clip Pliers Set

- Remove plastic body fasteners and clips faster in nearly any location. Features:
- Three pairs of pliers in 45°, 90° and straight.
 - Unique design lifts center pin and removes plastic rivets and fasteners without damage.
 - Reach in wheel wells, next to firewalls, behind bumpers and dashboards.
 - Eliminates breaking plastic retention clips.
 - Covered by OTC's Lifetime Warranty.

7401

Ratcheting Chain Wrench

- This multi-purpose tool will grip parts of nearly any shape. It features a ratcheting head design that lets you turn in either direction without removing wrench from the work.
- 19" handle with capacity from 3" to 6-3/4" O.D.



6969

Ratcheting Chain Wrench – 24"

- Ratcheting action makes it possible to re-grip without removing wrench.
- Handles parts of most any shape... round, square, hexagon, or octagon.
- Handle is 24" long; chain grips objects ranging from 3" to 6-1/2" O.D.

4462

Wire Loom Threading Kit

- The 4462 Wire Loom Threading Kit from OTC is a clever grouping of wire fishing tools for the automotive technician. Whether general wiring R&R - or adding Gauge Packs, Sound Systems, Vehicle Security and Camera Systems, these tools simplify placing the wiring within the protection of existing wiring looms, without cutting tape or zip ties and without damage to other wires.
- There are 3 wire pulling tools in 15", 10" and 5.5" lengths for common automotive applications, the grommet insertion tool allows the wire to be captured within the tool to hold once it is placed, placed so you can grab from the opposite side of the firewall - and the pigtail tool assists when building a new harness on the workbench.

Wire Service Tools

5912

Crimpwell™ Angled Crimping Pliers

- Universal crimping design accommodates soft wire – solid or stranded – 10-22 AWG.
- Cutting feature included for quicker preparation.
- 9" (228mm) in length, with protective grips to increase leverage and secure crimp.



5950A

CrimPro™ 4-in-1 Angled Wire Tool

- Compact 7-inch design.
- Gripping nose.
- Crimper, 12-20 AWG insulated & non-insulated wire.
- Stripper - strips 12-20 AWG wire.
- Cutter - ability to make cuts below pivot.
- Angled head to work against firewalls, frames, bulkheads and more.



5950S

CrimPro™ 4-in-1 Wire Tool

- Compact 7-inch design.
- Gripping nose.
- Crimper, 12-20 AWG insulated & non-insulated wire.
- Stripper - strips 12-20 AWG wire.
- Cutter - ability to make cuts below pivot.



4813

Heat Shrink Tubing Set (171 Piece)

- Protection and insulation for solder connections and components. 2 to 1 shrink ratio with flame or heat gun.



4814

Waterproof Heat Shrink Tubing Set (106 Piece)

- Waterproof protection and insulation on solder connections and components. Adhesive lined inner wall to seal out moisture. 3 to 1 shrink ratio with flame or heat gun.



STRUT TAMER II EXTREME

NEW



Strut assembly not included

✓ MEETS THE NEW ASME PASE SAFETY STANDARDS FOR SPRING COMPRESSION
✓ CAPABLE OF SAFELY COMPRESSING THE LARGEST STRUT SPRINGS

- New forged locking jaws includes larger pads and offset to clamp onto and compress springs even tighter than before.
- New extra thick 5/8" compression arms for superior strength, stability and safety.
- New locking trunions for optimal stability during spring compression.
- New Lock rings to hold arms in position - standard. Eliminates arms from spreading or sliding when compressing offset or unique strut configurations. No tools needed to adjust.
- New Spring capacity of 2-1/2" – 10" diameter, 1-1/4" – 24" vertical stroke.
- Extreme duty design to handle the heavier springs found on mid- and some full-size truck strut assemblies.

6637
StrutTamer II Extreme Height 29" (736 mm)
Width 21" (533 mm) Depth 20" (508 mm)



6637-ST
StrutTamer II Extreme with stand
Height 54" (1372 mm) (36" without handle)
Width 22-1/2" (572 mm) Depth 32" (813 mm)



6575
Hub Grappler™ Kit

- Jaws designed and sized to properly fit hub applications and is quickly located on the puller bar without the use of fasteners.
- 3/4" custom drive screw coupled with the special equalizer washer provides smooth operation while proprietary heat treating extends its life 5-10 longer than similar designs.
- Six adapters increase application coverage. Includes tie rod/ball joint tool and two Ford axle installers.
- Included Application Guide is the most comprehensive on the market.

7248
U-Joint Removing/Installing Tool

This helpful tool uses a forcing-screw press to safely remove and replace automotive universal joints with needle bearings, including GM plastic pin CV U-joints.



6559
Ball Joint Master Service Kit

- The 6559 Ball Joint Master Service Kit offers complete coverage of Car and Truck/Van/SUV applications. With 70+ adapters, c-frame and application guide means there is nothing else to add for servicing ball joints.
- The majority of vehicles have press-in ball joints, so stop searching for make-shift solutions for servicing these vehicles – everything required is laid out in this one complete kit.
- With a kit of this magnitude, finding the correct adapters and using them correctly is key to minimizing service time. That is exactly what the included ball joint application guide is designed to do – contains application charts and diagrams with step-by-step instructions.



6530
Ball Joint Intermediate Service Kit

- This 20+ adapter kit covers many Truck/Van/SUV applications and some car applications.
- With the majority of Cars and Truck/Van/SUV applications having press-in ball joints and universal joints, this kit is designed to service many of those applications.
- This kit is a combination of 7249, 7918, and 7996 kits, and includes 20+ adapters, C-Frame, and Application Diagrams all provided in a case.

7249
Ball Joint Starter Service Kit

- This starter kit is the backbone to ball joint, U-joint, anchor pins, and many other general pressing operations. Kit includes 5 adapters and C-Frame provided in a case.



6939
Broken Bolt Extractor Tool

- Remove frozen, broken or cut off bolts within steering or suspension bushings.
- Can also be used to remove and install wheel studs and other general pressing needs.



6939-1
Broken Bolt Extractor Adapter Set

- Available for use with the 7248 C-Frame.



6935
U-Joint Service Adapter
For use with the 7248 C-Frame to service the u-joints found on Dana 60 4WD front drive axles.



OTC HAMMERS



5790ID-816

Automotive Heavy Hitters

5790ID-616
Head 6 lbs., Handle Length 16", Total Weight 7.6 lbs.

5790ID-812
Head 8 lbs. Handle Length 12", Total Weight 8.9 lbs.

5790ID-816
Head 8 lbs. Handle Length 16", Total Weight 9.7 lbs.



Accutorq™ Clikker Torque Wrenches

7375
Torque 100-1000 in.-lb (11-113 N•m)
Graduations 10 in.-lb Square Drive 3/8" Length 15-1/8"

7377
Torque 10-150 ft.-lb (14-203 N•m)
Graduations 2 ft.-lb Square Drive 1/2" Length 17-3/4"

7378
Torque 25-250 ft.-lb (34-339 N•m)
Graduations 2 ft.-lb Square Drive 1/2" Length 19-3/8"

7379
Torque 100-600 ft.-lb (136-813 N•m)
Graduations 10 ft.-lb Square Drive 3/4" Length 42-1/4"



6295
Front End Service Set

Kit includes five popular tools used for servicing Pitman arms, ball joints, and tie rods on most vehicles. Set includes:

- 7314A – Pitman arm puller.
- 7315A – Tie rod end remover.
- 7503 – Outer tie rod remover/ball joint separator.
- 6296 – Pitman arm/tie rod end puller.
- 6297 – Ball joint separator.



NEW

7503HD
Tie Rod/Ball Joint Puller

- A heavy-duty version of the original 7503 puller, fitting all the same applications but twice the load capacity.
- Uses a large 3/4" drive screw with interchangeable tips included for multiple applications.



5713 Tire Bead Seater

The Tire Bead Seater is used when a tire, new or used, is mounted on a wheel and the tire bead does not touch both sides of the wheel, making inflation possible. The air trigger on this tool expels a tremendous burst of air that inflates the tire to seat it to the wheel rim. This allows the tire to be inflated to the recommended pressure through the tire valve.

- Equipped with unique configurations that enhance ease of use, productivity, and safety
- ASME certified 13-gallon tank is designed with a nozzle and valve connected via hose assembly, giving users more control rather than requiring them to hold the weight of the tank



5729 Inside Dual Wheel Bead Breaker

- Breaks the inner bead on the outside tire without removing the wheel from the truck.
- Unique design places pressure in the exact location required to quickly and easily break the inner bead.
- Simply pull up on the handle and the bead is forced off the wheel rim.

5727 Sliding Bead Breaker

The 5727 Sliding Bead Breaker has a split head, unique wedge design and slide hammer to reduce bead friction. Foot loops and tipping slots provide leverage and ease of transferring force to the tire.

- Sliding Bead Breaker, 47" extends to 81", 21 lbs.



5744 TPMS Tire Deflator/Locator;

- Evacuates air from the tire without removing the valve core.
- Tire location is marked on the color coded deflators so TPMS sensors can be replaced to the original location, eliminating the need for resetting.



5733 Tire Bead Wedge Pliers

- Tire Bead Wedge Pliers keeps the tire in the bead drop area to ease mounting and demounting of larger truck and agricultural tires.
- Quick and easy universal clamping design.
- Rugged rubber coated jaw to protect wheel finish.



5747 Tire Valve Stem Punch Kit

- Quickly and easily remove old valve stems from a wheel with a swing of a hammer.
- Simply place the punch tip on the inside of the valve stem and strike the punch to force the old valve stem out of the wheel.
- The unique punch tip is heat treated and shaped to remove all types of valve stems.
- Includes hand protecting handle with interchangeable 5" and 8" punch adapters for car and truck wheel applications.

Tire Spoons



Convex Slip Head - Unique "Convex Slip Head" curved design allows the spoon to slide easily into the tire bead while the spoon bump limits the depth for quick-and-easy operation.



Grip grooves - Eliminate spoon slippage on the wheel rim while mounting or demounting the tire. The grooves also limit the depth of the spoon to help eliminate pinching tire tube applications.

5735-35 Double End Curved & Flat Tip Curved Tire Spoon, 35" Double end curved tire spoon. Handle knob enables easier spoon pick up. 3/4" diameter.

5735-35G Double End Tire Spoon with Grip Grooves, 35" Double end curved tire spoon. Handle knob enables easier spoon pick up. 3/4" diameter.

5735-42 Double End Curved & Flat Tip Curved Tire Spoon, 42" Same great design as the original double end mount/demount tire spoon, but in a 42" length for added leverage. 3/4" diameter.

5735-42K Double End Tire Spoon with Kick Start, 42" Includes kick loops to allow the spoon to be forced into tight bead locations with the help of foot pressure. 3/4" diameter.

5736-24 Curved Tire Spoon, 24" Handle knob enables easier spoon pick up. 3/4" diameter.

5736-30 Curved Tire Spoon, 30" Handle knob enables easier spoon pick up. 3/4" diameter.

5739-24 Curved Shank Tire Spoon, 24" The curved shank allows improved access for the spoon head around the tire bead or wheel rim. Handle knob enables easier spoon pick up. 3/4" diameter.

5739-30 Curved Shank Tire Spoon, 30" The curved shank allows improved access for the spoon head around the tire bead or wheel rim. Handle knob enables easier spoon pick up. 3/4" diameter.

5735-PACK Tire Spoon Rack Pack

A pack of popular tire spoons features the 35" Double End Tire Spoon with Grip Grooves (5735-35G), 35" Curved/Flat Tip Curved Tire Spoon (5735-35) and 30" Curved Tire Spoon (5736-30), along with a FREE rack (5715) that can be hung on a toolbox or wall for easy organization.



✓ FREE HANG RACK INCLUDED

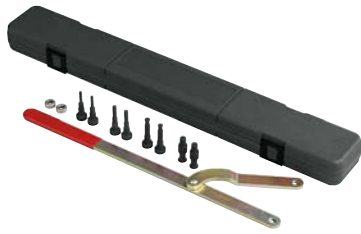
5715 Tire Spoon Rack

- Designed to hold OTC Tire Spoons by the handle upset.
- Also holds tools with 3/4" or smaller diameter shafts.
- Can be hung on end of tool box or mounted to the wall via holes on 16" center.



5758 Hub Cap Removal Tool

- Unique slide hammer design eliminates prying against the wheel finish and potential scratches.
- Opposite end has a rubber bumper used to re-install cap with a simple tab.



4754 Universal Pulley Holder

- Universal design fits many different size pulleys having slots or holes, such as crankshaft / transmission pulleys or gears.
- Wrench is adjustable from 1-1/2" to 8-5/8"; four different size step pins are interchangeable.
- Long handle enables technician to easily hold the pulley when tightening or loosening retaining bolts.



4769 Wheel Rim Protector Set, (3 piece)

Fits over the wheel rim to protect the wheel from being scratched or damaged while using tire spoons.



4795 Safety Wire Twist Pliers

These versatile 8" pliers will reliably twist safety wire rapidly and consistently. The right hand twist mechanism features an automatic spring return. The forged alloy steel construction features tapered jaws for confined areas and mated cutters to cut safety wire. For use on safety wire applications found on vehicles, machinery, and aircraft.

4796 Steering Neck Bearing Race Remover

Simple way to remove bearing race in the steering neck. Remover is inserted into neck and bolt is adjusted to tighten the remover against I.D. of steering neck. The remover is then driven from other end of neck to remove race. Fits 1-1/8" to 2-5/8" I.D. bearing race.



4844 Cam/Crank Locking Tool, Twin Cam & Dyna

- Designed to lock the cam and crank sprockets together for removal, replacement and proper torquing of the sprocket bolts.
- Double end design covers;
- Twin Cam 88/B 1999 & Later
- Dyna 2006 & Later



4738 Chain Breaker & Riveting Tool Kit

This heavy duty kit makes easy work out of breaking, pressing, and riveting # 415 - # 632 size standard and O-ring chains. The handle can be mounted in 3 different positions on the forged and hardened alloy c-frame, providing access while the chain is on the vehicle. The kit can rivet hollow nose master links as well as hardened pins. Storage case included.



4838 Piston Ring Compressor Set, 6 Piece

This 6 ring set covers 2-7/8" thru 4-3/8" piston diameters. The ring compressor pliers feature a ratcheting lock to hold the handles in position for easy piston installation.



4839 Adjustable Piston Ring Expander Pliers

These simple pliers include tips designed to capture the ends of piston rings to hold and expand them securely while installing onto pistons.



4840 Piston Ring Compressor Set with Ring Expander

This complete set includes 12 chrome plated compressor sleeves covering 1-3/8" thru 4-3/8 diameter piston applications. Both the ring compressor and ring expander pliers feature a ratcheting lock to hold the handles in position for easy piston and ring installation. Complete with a metal carry case.



4948 Water Pump Drive & Rotor Puller

- Installs the water pump drive gear on the rotor and removes the rotor from the crankshaft. This tool also works on RZR XP.
- Similar to Polaris No. PA-49316.



4860 Transmission & Steering Bearing Puller/Installer Kit

- This combination kit works on transmission main-shaft and steering stem bearings on HD motorcycles.
- Removes; Fork stem bearings on most applications. Flywheel bearing 00-03 XL. Removes/Installs; Inner bearing race on trans main-shaft Big twin 84 & later.
- Aftermarket trans main-shaft bearings & bushings on 5 & 6 spd. LSD and RSD trans.



4888 Flywheel Socket Set

The best flywheel sockets available. These offer a low profile design that provides full nut to socket contact to eliminate rounding off the nut and slippage. Made from heat-treated chrome moly steel.



4991 Clutch Compressor Tool

- This universal compressor is used to compress the drive or driven clutch during assembly of disassembly. Innovative design makes use quick and effective without binding. Works on all Polaris and TEAM clutches found on full-sized model ATV, Side x Side, and Snowmobile.



4974 Clutch Puller

- Removes drive clutches on Polaris Side x Side and Snowmobile.
- Snow Applications: 700/800 XCR Fuji 3 cylinder engines 1999-2001, all Domestic twin 2 -strokes model year 2000 and newer, FS/FST models 2006 and newer.
- Side x Side Applications: Ranger RZR XP 2011 and newer.
- 3/4-16 thread.



4987 Clutch Spider Nut Socket

- Used to remove and install the drive clutch spider jam nut on 2011 & newer Ranger RZR XP. Similar to OE P/N PU-50578.
- Similar to Polaris No. PU-50578.



4989 Clutch Spider Tool

- Essential when servicing or re-building Polaris clutch. Fit's P85 and P90 clutches found on Polaris ATV, Side x Side, and snowmobiles 1972 to Present.
- Similar to Polaris No. 2870341.



4748 Belt Tension Gauge

This easy to use and read tool allows for accurate belt tension to be set after belt replacement, adjustment, or wheel service. Use on secondary drive belts with a 10 lb. spec.



4852 Adjustable Primary Locking Bar

- Used to lock primary for service work.
- Will work on Chain or Belt Drive style primary drives.
- Adjustable length from 4" to 7-1/4" to cover virtually any application.



4882 Rear Axle Wrench

- This wrench allows for simple adjustment of drive belt tension or rear wheel alignment.
- Eliminates the need to remove any exhaust components.
- 36mm wrench includes a 1/2" square drive allowing for use with a torque wrench for proper axle torque.



4246
Hendrickson Rear Suspension Bushing Tool Kit

Replace rusted and frozen heavy-duty rear suspension bushings faster and easier

- Patent-pending design is suspension-mounted, eliminating the need to hold the tool during operation
- Remove and install Hendrickson PRIMAAX EX, COMFORT AIR, FCCC V Ride™ Pivot and D-Pin Bushings
- Save time and effort during suspension service to get trucks back on the road faster
- Included adapters align tool with the suspension to ensure proper bushing installation and reduce the chance of misalignment and bushing damage
- Includes an OTC 4106A 25-ton high-force cylinder



4247
 Adds an OTC 2510A air/hydraulic pump to make bushing service faster and easier

4250
Hendrickson Adapter Kit for Front Suspensions

- Use with your 4246 or 4247 Rear Tool on select Hendrickson Front Suspensions
- Remove and install Hendrickson PACCAR Monoleaf, Navistar Monoleaf, Volvo Monoleaf suspension Pivot Bushings

NEW



4274
Hendrickson Front Suspension Bushing Tool Kit

Replace rusted and frozen heavy-duty front suspension bushings faster and easier

- Patent-pending design is suspension-mounted, eliminating the need to hold the tool during operation
- Remove and install Hendrickson PACCAR Monoleaf, Navistar Monoleaf, Volvo Monoleaf suspension Pivot Bushings
- Save time and effort during suspension service to get trucks back on the road faster
- Included adapters align tool with the suspension to ensure proper bushing installation and reduce the chance of misalignment and bushing damage
- Includes an OTC 4106A 25-ton high-force cylinder

NEW



4275
 Adds an OTC 2510A air/hydraulic pump to make bushing service faster and easier

4254
Hendrickson Adapter Kit for Rear Suspensions

- Use with your 4274 or 4275 Front Tool on select Hendrickson Rear Suspensions
- Remove and install Hendrickson PRIMAAX EX, COMFORT AIR, FCCC V Ride™ Pivot and D-Pin Bushings

NEW



5286
OTC Portable Diesel Particulate Filter Cleaner

- The advent of the 2010 Tier 4 cleaning requirements created the need for a lighter, more portable cleaning system which can be taken into the field to clean filters at the point of service.
- Lightweight and Highly Portable - ideal cleaning system for use in the shop or on a service truck.
- Flexibility - clean DPF's from 6" to 15.5" in diameter using shop or compressed air of at least 100 PSI.
- Fully Automated Operation - once started, the cleaning process can be completed unmonitored, freeing up technician to simultaneously do other work in the shop.
- Focused Air Jet Technology™ - concentrates a precise high pressure stream of air directly into every cell.
- Maximum Efficiency - OTC's unique floating puck prevents "splash back," which maximizes the volume of air entering each cell.
- Easy Maintenance - contains no internal filters that require user maintenance and its rugged design provides maximum durability.



5280
Diesel Particulate Filter Cleaner

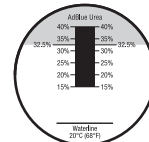
- Robust design for long shop life.
- High pressure cleaning process for thorough cleaning of ash from DPF – produces 10 times the burst energy of competitive low pressure units.
- Burst Quick Check identifies if filter is too plugged for proper cleaning.
- Movable with locking wheels for placement throughout the shop.
- Computer controlled process based on OE requirements for start-to-finish cleaning without constant technician monitoring.
- Containment of hazardous ash for easy disposal.
- HEPA Filter Air Exhaust System included to exceed shop environmental air standards.
- Operates on standard 115V outlet.
- Proven to clean to over 92% efficiency.
- Third-party OEM test results using pin gauge measurement with approved OTC adapters and burst cycles. Actual results may vary.



5025
Diesel Exhaust Fluid (DEF) Refractometer SCR & EPA 2010

- The OTC 5025 makes this a simple and quick process for an operator or technician to get an accurate measurement of UREA concentration in DEF or AdBlue solution.

Scale:
 0.5% line graduations
 32.5% Indicated
 Scale 15-40%
 Waterline & 20 Deg C



Application:
 The refractometer is a portable, precision, optical instrument used for measuring the Diesel Exhaust Fluid (DEF) concentration. When a liquid sample is placed on the prism, the light passing through it is bent and shows on the scale to indicate the DEF condition.



6- & 10-Ton Capacity Air/Hydraulic Service Jack

- Huge steel front wheels are mounted in bearings for trouble-free service life. Rear swivel casters make spotting the jack easy.
- Spring-loaded handle can be locked in three positions.

5106
 6-Ton Air/Hydraulic Service Jack.
 Lifting range 4-3/4" to 23-1/4", reach 87", 45" handle.

5110
 10-Ton Air/Hydraulic Service Jack.
 Lifting range 6-3/4" to 26-7/8", reach 93", 47" handle.



1770A

1,500 lb. Dual Wheel Dolly

- Hydraulic jack provides almost 5" of lift and tilts wheel assembly 4° to prevent damage to wheel seal.
- Independent lifting rack provides maximum stability; rollers won't catch on load.
- Swivel casters for easy maneuverability.
- Floor space is 45" by 41".
- 6' chain holds load in place.
- Covered by OTC Lifetime Warranty®.



5018A

Truck Clutch and Flywheel Handler

- Replaces 14" & 15-1/2" clutch assemblies weighing up to 250 lbs.
- 13" low point enables access below side faring.
- Linkage raises load from horizontal to vertical position.
- 360 degree swivel head.
- Covered by OTC Lifetime Warranty®.



NEW

1533A

2-Ton Aluminum Racing Jack Pack

- ASME-PASE Compliant
- 1532A – Aluminum Service Jack**
 - Min Height: 3.250"
 - Max Height: 18.625"
 - Handle Length: 47.625"
 - Weight: 41 lbs
- 1582A – Aluminum Jack Stands**
 - Low Height: 9.5"
 - High Height: 15.16"
 - Number of Adjusting Positions: 6
 - Base Diameter: 7"
 - Saddle size: 2.17" x 1.97"
 - Weight of each stand: 4.7 lbs



2,200 and 4,400 lb. Capacity Heavy-Duty Floor Cranes

- To conserve valuable floor space, crane folds into a compact package for storage.
- For "close-in" work, leg spread adjusts to clear vehicle's wheels; telescoping boom extension gives additional reach. Roller bearing mounted wheels and steering dolly provide ease of mobility.
- A two-speed hydraulic hand pump provides fast boom travel; descent of boom is under precise control of operator.
- Covered by OTC Lifetime Warranty®.
- 1819** – 2,200 lb. Capacity Crane. Has hydraulic hand pump and 16-7/8" lifting chain.
- 1820** – 4,400 lb. Capacity Crane. Has hydraulic hand pump and 18-3/8" lifting chain.



1735B

OTC 2,000 lb. Capacity Heavy-Duty Motor-Rotor® Repair Stand

- Handles a wide variety of engines, transmissions, torque converters, and rear axles from trucks, tractors, and construction machinery.
- The 50:1 ratio gearbox allows full rotation of mounted unit with just a turn of the crank and locks in position. Easily maneuvered when loaded.
- To ensure engine stability in all positions, this repair stand is equipped with a positive-crank handle locking mechanism.
- Twin-post design, featuring laterally adjustable, 3 position outboard support; provides an extremely stable work-holding unit.
- Locking rear wheels anchor stand in position.



5019A

2,200 lb. Capacity Low-Lift Transmission Jack

- Special mounting adapter fits popular Eaton® Fuller® RoadRanger® transmissions used on nearly all Class 7 and 8 heavy-duty trucks. Mounting plate angle is adjusted with the turn of a wrench.
- Swiveling pump handle permits ease of operation in restricted working spaces. Fast-acting pump quickly raises lifting arm.
- Includes No. 540231 adapter for Eaton® Fuller® RoadRanger® transmissions (also available separately).

Specifications:

Min. height is 8-1/4" Max. height is 36-1/2"
 Max. forward tilt – 15° Max. backward tilt – 20°
 Max. side tilt (either side) – 12°
 Overall length – 52" Overall width – 32-1/2"



5190A

Heavy-Duty U-Joint Puller

- The ideal tool for disassembling drivelines.
- May be used with up to a one-inch impact wrench.
- Quickly & easily removes sealed U-joint cups without the need for hammering or heat.
- Will not damage the driveshaft, yoke, bearing cups, or joints.
- Fits practically all Class 7 and 8 trucks, including: Spicer driveline 1610, 1710, 1760, 1810, 1880 Spicer SPL 140, 170, and 250 "Life Series" Meritor (Rockwell) 16N, 17N, 18N, 1710Meritor RPL 20 and 25 "Permalube" Series.
- Covered by OTC Lifetime Warranty®.



20-Ton Truck Ramps

- Long, retractable T-handle enhances mobility.
- Non-skid rubber matting prevents slippage during use.
- Durable, heavy-duty rubber wheels.
- Capacity per pair is 20 tons
- Covered by OTC Lifetime Warranty®.

5268

20-ton truck ramps handle up to 10" tread width.

5269

Wide 20-ton truck ramps handle up to 16" tread width.



1590

10-Ton Air Lift

- Adjustable lifting saddles and an extra wide stance for extra stability.
- 10 tons of lift at 200 PSI air pressure.
- Lifting range is 13" to 52".
- Automatic mechanical safety catch engages in five height positions.



4295

Wheel Stud Service Kit

- Installation done by pushing on the head, eliminating the need for threaded adapters.
 - Reduces number of adapters required
 - Reduces damage to studs, hubs/bearings
 - Increases ease of use
- Remove and install 10 studs in only 10-15 minutes
- Can be powered with an impact wrench, no hydraulic power source required.
- No need to remove hub from vehicle.

5056



Slack Adjust Pullers

These pullers will yank even the most corroded slack adjuster off the S-cam—and do so in just a fraction of the time needed with "heat and beat" methods. Plus, they won't damage components. Both pullers have a rugged forcing screw and cast steel body. Puller No. 5055 fits many manual types, and the No. 5056 works on Rockwell, Haldex, Gunitite, and Bendix automatic adjusters.

- Covered by OTC Lifetime Warranty®.

5055

Manual slack adjuster puller.

5056

Automatic slack adjuster puller.



1780

22-Ton Capacity Jack Stands

- Height range is 13-7/8" to 19-7/8".
- Saddle size 3" x 3-3/4".
- Pin-style (non-ratchet) three positions, 3" intervals.
- Reinforced collar to meet newest ANSI PALD test standards.
- 11" flat base prevents sinking into the surface.

Hydraulic Flow Meters

Unparalleled accuracy in testing hydraulic oil flow circuits for vehicles and machinery. All are protected by a durable steel case. Pressure accuracy is at +/- 1.6% of full scale. Due to their standard burst disc protection system, overpressure conditions prevent spillage of hydraulic fluid. All devices accommodate bi-directional flow and are CE marked as appropriate.



4277 50 gpm Mechanical Hydraulic Flow Meter

- Flow Accuracy to +/- 4% of full scale
- Measures flow from 4 to 54 gpm
- Pressure up to 6000 psi
- Fluid filled analog gage that dampens vibration
- Temperatures up to 230 deg F
- Reads flow in one direction
- No batteries required
- Port is 1-5/16" - 12 UN JIC Male
- 12.25" x 4.125" x 4.875", weight 14.5 lbs



4285 100 gpm Digital Hydraulic Flow Test Kit

- Includes OTC 4292 Digital Readout and OTC 4291 Flow Block with Loading Valve
- Flow Accuracy to +/- 1% of indicated value
- Measures flow from 2.5 to 100 gpm
- Pressure up to 6000 psi
- Digital display for flow, temperature, analog for pressure
- Reads flow in both directions, pressure on the high side of valve
- Require 1 9V battery (included)
- Port is 1-5/16" - 12UN #16 SAE ORB
- 12.99" x 12.4" x 10.24", weight 17lbs



4292 Hydraulic Flow Measurement Digital Readout

- For remote flow measurement by using Flow Blocks OTC 4290 or OTC 4291
- Included in OTC 4285 and OTC 4294
- Digital display for flow, temperature, analog for pressure



4278 100 gpm Digital Hydraulic Flow Meter

- Flow Accuracy to +/- 1% of indicated value
- Measures flow from 2.5 to 100 gpm
- Pressure up to 6000 psi
- Digital display for flow, temperature, analog for pressure
- Temperatures up to 250 deg F
- Reads flow in both directions, pressure on the high side of valve
- Requires 1 9V battery (included)
- Port is 1-5/16" - 12UN #16 SAE ORB
- 9.45" x 7.87" x 7.87", weight 14 lbs



4290 16 gpm Flow Block

- Can be used with Digital Flow Meter Readout OTC 4292 included in OTC 4285 and OTC 4294
- Port is 1-1/16" - 12UN #16 SAE ORB
- Flow range from 1 to 16 gpm
- Max pressure 6000 psi

4291 Flow Block with Loading Valve

- Can be used with Digital Flow Meter Readout OTC 4292 included in OTC 4285 and OTC 4294
- Knob allows for pressure loading/restriction
- Port is 1-5/16" - 12UN #16 SAE ORB
- Flow range from 2 to 100 gpm
- Max pressure 6000 psi



- ### 4294 Deluxe 100 gpm Hydraulic Flow Measurement Set
- Measurement Set
 - Comprised of OTC 4290, OTC 4291, OTC 4292, Long Cable and Hose Set and Short Cable
 - Case included

OTC Cylinder Rams



Single Acting Cylinders		Cap. in Tons	Stroke	Height Collapsed	Height Extended
4100A	5-Ton Single Acting Cyl.	5	3"	5-11/16"	8-11/16"
4101A	5-Ton Single Acting Cyl.	5	5-1/4"	10-7/16"	15-11/16"
4103A	10-Ton Single Acting Cyl.	10	2-1/8"	5-9/16"	7-11/16"
4104A	10-Ton Single Acting Cyl.	10	6-1/8"	11-1/2"	17-5/8"
4105A	10-Ton Single Acting Cyl.	10	10-1/8"	15-1/2"	25-5/8"
4106A	25-Ton Single Acting Cyl.	25	6-1/4"	13-3/8"	19-5/8"
4107A	25-Ton Single Acting Cyl.	25	14-1/4"	21-3/8"	35-5/8"
4108A	5-Ton LP Single Acting Cyl.	5	9/16"	1-5/8"	2-3/16"
4110A	55-Ton Single Acting Cyl.	55	6-1/4"	11"	17-5/16"
Hollow Centered Cylinders NEW		Cap. in Tons	Stroke	Height Collapsed	Height Extended
4120A	17 1/2 Ton Hollow Centered Cylinder w/adapter plate	17 1/2	2.00"	5.46"	7.46"
4120A-MA	17 1/2 Ton Hollow Centered Cylinder (Cylinder only)	17 1/2	2.00"	5.46"	7.46"
4121A	30 Ton Hollow Centered Cylinder w/adapter plate	30	2.50"	7.80"	10.30"
4121A-MA	30 Ton Hollow Centered Cylinder (Cylinder only)	30	2.50"	7.80"	10.30"
4122A	50 Ton Hollow Centered Cylinder w/adapter plate	50	3.00"	10.27"	13.27"
4122A-MA	50 Ton Hollow Centered Cylinder (Cylinder only)	50	3.00"	10.27"	13.27"



4145A 100-Ton Cylinder Ram

- 100-ton ram with 2-1/4" stroke
- Collapsed Height 5.6"
- Extended Height 7.8"



4000 Single-Speed Hydraulic Hand Pump

This single-speed pump is ideal for single-acting rams. Developing up to 10,000 psi operating pressure, the pump operates horizontally or vertically in the "head down" position. Fingertip control provides instant release or pumping action. Has a built-in safety overload valve. Ideal for use with OTC single-acting rams, or similar competitors' rams.



1572 Car Dolly (3,600 lbs., capacity pair)

- Clamps directly to pinch welds to prevent slippage during use.
- Independent units eliminate the need to adjust dolly width for different vehicle designs.
- Each unit has an independently adjustable threaded lift saddle with rubber pads to protect the vehicle frame.
- Universal design for use on all vehicle types without additional adapters.
- Provides easy movement of FWD vehicle after removal of drive train.
- 5" polypropylene casters.
- Each unit has 1,800 lbs. capacity with low height of 9" and high of 14" (3,600 lbs., pair).
- May be used with or without tires on vehicle.



2510A Air/Hydraulic Pump

- 10,000 PSI air/hydraulic pump.
- Internal relief valve.
- Two-stage release mechanism.
- Pump, hold, or release load with pedal control.
- 98 cu. in. usable capacity.
- 3/8 NPT oil port.

TIF-ZX Heated Pentode® Refrigerant Detector

- Heated Pentode® sensor technology
- Tri-color visual leak size indicator
- Detects all CFC, HFC, HCFC's including R-12, R-22, R-123, R-134a, R-404a, R-407a, R-408a, and R-410a.

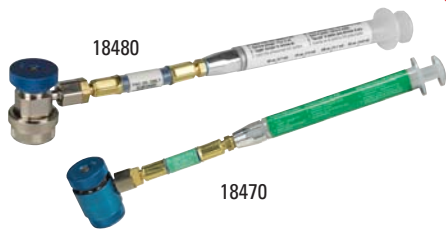


16009 DiscovR Refrigerant Identifier

Fast and Accurate. "Pass" and "Fail" lights clearly show if refrigerant is pure enough to be recovered.

Product Specifications:

Refrigerant: R134a
Input Power: 12 VDC
Accuracy: Pass/Fail - 95% pure R134a
Air Detection: Yes
Approvals: SAE J1771, UL/C



Syringe-Type Injectors

Use these syringe-type injectors to add oil to a fully pressurized A/C system. Just fill the barrel with the amount of oil needed, connect the injector, and press the plunger.

- 18480** – R-134A oil injector, PAG labeled
- 18490** – R-134A oil injector, POE labeled
- 18460** – R1234YF oil injector, Generic
- 18465** – R1234YF oil injector, PAG labeled
- 18470** – R1234YF oil injector, POE labeled

Not recommended for UV dye injection.

75700 CoolTech Coolant Exchanger

- Our 10 minute exchange process means no more waiting for the engine to warm up!
- "Engine Off" feature removes pulleys, belts, and fan blades from the safety equation.
- Vacuum mode creates a "push/pull" exchange process allowing the technician to safely remove high pressure in a hot system.
- Leak check feature allows the technician to test for leaks prior to refilling.
- Two clearly marked valves and an easy-to-read gauge make this machine very easy to use.
- No electricity required. 90 psi shop air drives the exchange process, as well as the 2 gpm pump on the waste tank.
- Two external new coolant supply tanks allow on-board storage of two different coolant types.



75240 Coolant and Battery Refractometer

Coolant scale range:
32° F/0° C to -60° F/-51° C.



Econo-Clean Coolant Service Accessories

75134
Coolant test strips.

75234
3-way heavy-duty truck coolant test strips.



The best way to Service A/C



34288NI



34788NI



34788NI-H



34988NI

A/C Comparison Chart Features

	34288NI	34788NI	34788NI-H	34988NI
Fully-Automatic Function: Program to recover, vacuum, leak test and charge without operating panel valves.		X	X	X
Automatic Dye Inject: Gives the user the ability to use the machine to inject UV dye into a vehicle's A/C system.				X
Automatic Oil Drain: A display reminds you to empty the graduated container to show the amount of oil to replace.	X	X	X	X
Oil Inject: Automatically inject oil back into the vehicle's A/C systems.		X*		X**
Refrigerant & Oil Database: A/C system capacities for North American market vehicles (Optional – not included with the machine)	Optional	Optional	Optional	Optional
A/C System Flush: Flushes a vehicle's A/C system with refrigerant, eliminating any residual oil or other liquid. (Flushing adapters not included)		X	X	X
Save & print before and after service data: Allows the user to store before and after service information by vehicle and print this information to provide to a customer.		X	X	X
Visual & Audible Alarm: Notifies the user when service is complete, or if a problem has occurred.		X	X	X
Vacuum Leak Test: Monitors level after evacuation, informs of possible leak.		X	X	X
Automatic Air Purge: Eliminates system-damaging air without monitoring gauges or opening valves.	X	X	X	X
Automatic Refrigerant Refill: Maintains a user-selectable amount of refrigerant in an internal vessel and signals when it's time to change supply tank, no monitoring required.		X	X	X
Vacuum Feature: Defaults to 15 mins, programmable up to 99 mins. "Remaining time" is displayed.	X	X	X	X
Display: Multilingual	X	X	X	X
Refrigerant Charging	X	X***	X***	X***
Refrigerant Management System: Displays refrigerant use and monitors remaining filter life. Prompts appear when 1/3 of filter life remains.	X	X	X	X
Electric Vehicle: Capable of servicing high voltage electric compressor A/C systems.			X	
Printer	Optional	Optional	Optional	X

* One oil bottle. ** Two oil bottles and one UV dye bottle. *** Charge mode from high or low side, or use both sides.

UV Leak Detection Kits

- The easiest and most accurate gun available today.
- No guesswork – a pre-measured application every time.
- One squeeze injects a pre-measured amount (1/8 oz.) of dye. No more adding too much dye.



16234



16235

92500 Transmission Fluid Exchanger

You can have the vehicle in and out of the service bay in less than 20 minutes! Operate through dipstick only, cooler line or a combination of the two!

- Exchange accuracy approx. +/- 1/4 qt.
- 32-qt. supply tank; 34-qt. waste tank.

92001 Automatic Transmission Fluid Diagnostic Pads

Easy, quick way to test automatic transmission fluid to determine when service is necessary. Simply place a few drops of transmission fluid from transmission dipstick onto test pad. Pad will change color indicating condition of transmission fluid. Package contains 100 pads.



1234YF A/C Service Fully automatic operation — program for service, walk away and return when complete.

AC1234-6

- OEM-approved 1234yf recovery, recycle and recharge machine.
- 95% recovery efficiency.
- Programmable vacuum operation helps get to the necessary vacuum level in any condition quickly.
- System leak test to identify gross leaks in a system.
- Charge accuracy within +/- ½ oz.
- Automatic oil drain shows how much oil was removed from the system during service.
- Automatic air purge removes the potential of air accumulating in the internal tank.
- Integrated refrigerant identifier (meets SAE J2927).
- Liquid refrigerant flushing function can flush A/C systems or individual components using liquid refrigerant instead of harsh chemicals.
- Automatic internal tank refill. No stopping to fill the internal tank during service, or before service.
- 1/4 Color VGA display. Large easy to read graphical display.
- On-board printer capable of printing vehicle service report slips to present to customers.



18410

Hydraulic Flaring Kit

- Fabricates a variety of fuel, brake and A/C line flares.
- Push connect 1/4, 5/16 and 3/8".
- GM fuel line, brake line and transmission 5/16 and 3/8".
- Flare and double flare.
- Metric bubble flare.
- Comes in a custom blow molded case.



Not responsible for errors in description. / 17-08 Q2 2017 Edition, Printed in U.S.A.

Robinair Vacuum Pumps

VacuMaster® Single Stage Vacuum Pumps

15115
1.5 CFM Vacuum Pump.

15310
3 CFM Vacuum Pump.

15510
5 CFM Vacuum Pump.



VacuMaster® 2-Stage Vacuum Pumps

15150
1.5 CFM Vacuum Pump.

15300
3 CFM Vacuum Pump.

15500
5 CFM Vacuum Pump.



CoolTech® Vacuum Pumps

15434
4 CFM Vacuum Pump.

15600
6 CFM Vacuum Pump.



Robinair Manifolds



41234 R1234yf Aluminum Manifolds and Hose Set

- Easy-to-read 3-1/8" adjustable gauges.
- Durable aluminum manifold block with fittings.
- Improved face seal valves provide a tight seal, less wear and improved flow.
- Easy-to-grip control knobs.

2-Way Aluminum Manifold (R134A)

- 48510**
- 90° Manual couplers
 - 72" R134a Hose Set (1/2" ACME x 14mm)



2-Way Brass Manifold

45111
R134a Manifold Hose Kit



Economy Manifolds

48134A
R134 brass manifold, hose set and service couplers



49134A

R134 aluminum manifold, hose set and service couplers



22791

InfraRed Refrigerant Leak Detector

- Advanced infrared sensor designed to last a minimum of 10 years.
- Three sensitivity levels down to 0.15 oz./year.
- Automatically recalibrates in highly contaminated areas to help pinpoint the exact location of the leak
- Won't trigger on oil or moisture.



TIF-9010A

Slimline Programmable Scale

- Completely portable refrigerant scale, battery powered, can be used with all refrigerants.
- Extreme accuracy.
- 110 lb./50 kg capacity.

