

MUSCLE TOOLS

Electronic Diagnostics | Special Tools | Shop Equipment | A/C Tools

Q1 2018 Edition

OTC ROBINAIR actron BOSCH

Purchase a HPT 500 HD smoke machine & HDS 200 scan tool together & **receive free HD multimeter 3940-HD**



HP T500
1699500000



HDS 200
1699200239



FREE
HD Multimeter
3940-HD

3940-HD Professional grade multimeter kit for heavy duty truck repair

- ▶ OTC 550 Series Auto-ranging Multimeter
- ▶ Mid-Range Amp Probe (2-600 amps) - Covers HD truck components & electric motors
- ▶ 5' Test Leads - Extended reach for large trucks

See page 5

PROMOTIONS

All promotions valid Q1 2018. For promotion details and to redeem, visit Boschrebates.com. Dated proof of purchase and/or serial numbers required when registering for rebate. Must redeem within 30 days of promotion end date.

Buy OTC 3893-LTW Encore 1-year software subscription, **receive a free 3914 Battery and Starting/Charging Systems Tester**



3893-LTW
Encore 1-year subscription and Lifetime hardware warranty



FREE
3914 Battery & Starting/Charging Systems Tester

See pages 6 & 7

Free troubleshooting subscription with purchase of OTC 3824 ESI[truck]



FREE
3824-08R

3824-08R
12-Month Troubleshooting and Repair Subscription

See page 4

Buy an OTC 3896 Evolve, **receive an OTC 1630 2-drawer service cart**



See page 6



Buy two (2) OTC 3210 CodeConnect with ABS (codes and datastream), Airbag & expanded European coverage, **receive a free 3209 OBD II, ABS and Airbag Scan Tool or \$50 rebate**



3210



3209

FREE
3209
OR
\$50 Rebate

See page 7

NEW LEAK DETECTORS FROM ROBINAIR



See page 2

MADE IN USA* - NEW LEAK DETECTORS FROM ROBINAIR
MEETS SAE J2913 AND SAE J2791 ASHRAE 173-2012, EN14624-2012 INDUSTRY STANDARDS



LD3

- Loud audible alert
- Automatic calibration

LD3 Features

- Long life, stable sensor
- Automatic calibration and reset to ambient
- 3 adjustable sensitivity levels
- Low battery indicator
- True mechanical pump
- Uses 4 AA alkaline batteries included
- Comfortable rubberized Santoprene handle grip

LD5

- Color display with graphics and visual alerts
- Bar graph mode helps locate leaks faster
- Loud audible alert
- LED inspection lights
- Automatic and manual calibration

LD5 Features

- Unique color graphic LCD display
- Long life, stable sensor
- Automatic calibration and reset to ambient
- User friendly message and error screens
- High-intensity LED inspection light
- 3 adjustable sensitivity levels
- Low battery indicator
- True mechanical pump
- Audio mute function
- Uses 4 AA alkaline batteries included
- Comfortable rubberized Santoprene handle grip

UV Leak Detection Kits



16234

16235

UV Leak Detection Kits

- The easiest and most accurate gun available today.
- No guesswork – a pre-measured application every time.
- One squeeze injects a pre-measured amount (1/8 oz.) of dye. No more adding too much dye.

LD7

- Color display with graphics and visual alerts
- Bar and Pinpoint graphing modes help locate leaks faster
- Loud audible alert with mute option
- UV and Clear LED inspection lights
- Automatic and manual calibration

LD7 Features

- Patented 3 LED UV lights with 395-415 nm; wavelength is optimum for A/C dye fluorescence
- Unique color graphic LCD display
- Long life, stable sensor last up to 10 years
- Sweep mode function to pinpoint leak source
- Automatic calibration and reset to ambient
- User friendly message and error screens
- High-intensity LED inspection light
- 3 adjustable sensitivity levels
- Low battery indicator
- True mechanical pump
- Audio mute function
- Uses 4 AA alkaline batteries included
- Comfortable rubberized Santoprene handle grip

* Made in USA with globally sourced components

Transmission Exchanger

92500

Transmission Fluid Exchanger

You can have the vehicle in and out of the service bay in less than 20 minutes! Operate through dipstick only, cooler line or a combination of the two

- Exchange accuracy approx. +/- 1/4 qt.
- 32-qt. supply tank; 34-qt. waste tank.



92001

Automatic Transmission Fluid Diagnostic Pads

Easy, quick way to test automatic transmission fluid to determine when service is necessary. Simply place a few drops of transmission fluid from transmission dipstick onto test pad. Pad will change color indicating condition of transmission fluid. Package contains 100 pads.



16009

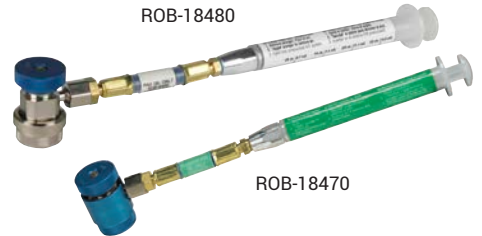
DiscovR Refrigerant Identifier

Fast and accurate. "Pass" and "Fail" lights clearly show if refrigerant is pure enough to be recovered.

Product Specifications:

- Refrigerant: R134a
- Input Power: 12 VDC
- Accuracy: Pass/Fail - 95% pure R134a
- Air Detection: Yes
- Approvals: SAE J1771, UL/C

ROB-18480



ROB-18470

Syringe-type injectors

Use these syringe-type injectors to add oil to a fully pressurized A/C system. Just fill the barrel with the amount of oil needed, connect the injector, and press the plunger.

18480 – R-134A oil injector, PAG labeled

18490 – R-134A oil injector, POE labeled

18460 – R1234YF oil injector, generic

18465 – R1234YF oil injector, PAG labeled

18470 – R1234YF oil injector, POE labeled

Not recommended for UV dye injection.

Coolant Exchanger

75700

CoolTech Coolant Exchanger

- Our 10 minute exchange process means no more waiting for the engine to warm up.
- "Engine Off" feature removes pulleys, belts, and fan blades from the safety equation.
- Vacuum mode creates a "push/pull" exchange process allowing the technician to safely remove high pressure in a hot system.
- Leak check feature allows the technician to test for leaks prior to refilling.
- Two clearly marked valves and an easy-to-read gauge make this machine very easy to use.
- No electricity required. 90 psi shop air drives the exchange process, as well as the 2 gpm pump on the waste tank.
- Two external new coolant supply tanks allow on-board storage of two different coolant types.





NEW

AC1234-4 Premier R-1234yf Recover, Recycle and Recharge Machine

The AC1234-4 is a fully automatic ACS machine that meets or exceeds SAE J2927 and J2843 standards for 1234yf recovery. The machine includes an integrated refrigerant identifier that samples the refrigerant in the vehicle's A/C system prior to recovery. AC1234-4 is a highly accurate and reliable machine capable of servicing both standard and high-voltage vehicle A/C systems.

- Fully automatic operation — program for service, walk away and return when complete
- Unmatched, industry-leading 98.5% recovery efficiency
- Charge accuracy within +/- 1/2 oz
- Automatic internal tank refill. No stopping to fill the internal tank during or before service
- Automatic oil drain shows how much oil was removed from the system during service
- Automatic air purge removes the potential of air accumulating in the internal tank
- Integrated refrigerant identifier (meets SAE J2927)
- Programmable vacuum operation helps get to the necessary vacuum level in any condition quickly
- System leak test to identify gross leaks in a system
- Liquid refrigerant flushing function can flush A/C systems or individual components using liquid refrigerant instead of harsh chemicals
- Meets and exceeds SAE J2843 requirement for R-1234YF Recover, Recycle and Recharge equipment

The best way to Service A/C



34288NI



34788NI



34788NI-H



34988NI

A/C comparison chart features

	34288NI	34788NI	34788NI-H	34988NI
Fully-Automatic Function: Program to recover, vacuum, leak test and charge without operating panel valves.		X	X	X
Automatic Dye Inject: Gives the user the ability to use the machine to inject UV dye into a vehicle's A/C system.				X
Automatic Oil Drain: A display reminds you to empty the graduated container to show the amount of oil to replace.	X	X	X	X
Oil Inject: Automatically inject oil back into the vehicle's A/C system.		X*		X**
Refrigerant & Oil Database: A/C system capacities for North American market vehicles (Optional — not included with the machine)	Optional	Optional	Optional	Optional
A/C System Flush: Flushes a vehicle's A/C system with refrigerant, eliminating any residual oil or other liquid. (Flushing adapters not included)		X	X	X
Save & print before and after service data: Allows the user to store before and after service information by vehicle and print this information to provide to a customer.		X	X	X
Visual & Audible Alarm: Notifies the user when service is complete, or if a problem has occurred.		X	X	X
Vacuum Leak Test: Monitors level after evacuation, informs of possible leak.		X	X	X
Automatic Air Purge: Eliminates system-damaging air without monitoring gauges or opening valves.	X	X	X	X
Automatic Refrigerant Refill: Maintains a user-selectable amount of refrigerant in an internal vessel and signals when it's time to change supply tank, no monitoring required.		X	X	X
Vacuum Feature: Defaults to 15 mins, programmable up to 99 mins. "Remaining time" is displayed.	X	X	X	X
Display: Multilingual	X	X***	X	X
Refrigerant Charging	X	X***	X***	X***
Refrigerant Management System: Displays refrigerant use and monitors remaining filter life. Prompts appear when 1/3 of filter life remains.	X	X	X	X
Electric Vehicle: Capable of servicing high voltage electric compressor A/C systems.			X	
Printer	Optional	Optional	Optional	X

* One oil bottle. ** Two oil bottles and one UV dye bottle. *** Charge mode from high or low side, or use both sides.

Robinair Vacuum Pumps

VacuMaster® Single Stage Vacuum Pumps

15115

1.5 CFM Vacuum Pump

15310

3 CFM Vacuum Pump

15510

5 CFM Vacuum Pump



VacuMaster® 2-Stage Vacuum Pumps

15150

1.5 CFM Vacuum Pump

15300

3 CFM Vacuum Pump

15500

5 CFM Vacuum Pump



CoolTech® Vacuum Pumps

15434

4 CFM Vacuum Pump

15600

6 CFM Vacuum Pump



Robinair Manifolds



41234

R1234yf Aluminum Manifolds and Hose Set

- Easy-to-read 3-1/8" adjustable gauges.
- Durable aluminum manifold block with fittings.
- Improved face seal valves provide a tight seal, less wear and improved flow.
- Easy-to-grip control knobs.

2-Way Aluminum Manifold (R134A)

48510

- 90° Manual couplers
- 72" R134a Hose Set (1/2" ACME x 14mm)



2-Way Brass Manifold

45111

R134a Manifold Hose Kit

- 90° manual couplers
- 72" R134a hose set



Economy Manifolds

48134A

R134 brass manifold, hose set and service couplers

- 90° manual couplers
- 72" R134a hose set



49134A

R134 aluminum manifold, hose set and service couplers

- 90° manual couplers
- 60" R134a hose



Refrigerant Tanks

17121

30 lb. tank, 1/4" fittings (25150, 25175, 25200B, 34234, 34300-2K, 34800 series).

17506

50 lb. tank, 1/4" fittings (17800A, 17800-2K, 17700A, 25150, 25175, 25200B series).



17121

17506

TIF-9010A

Slimline Programmable Scale

- Completely portable refrigerant scale, battery powered, can be used with all refrigerants.
- Extreme accuracy.
- 110 lb./50 kg capacity.



Bosch ESI[truck] heavy-duty diagnostics



The ESI[truck] platform features software package options for vehicles technicians see every day. The 3823 and 3824 software packages include all makes/ models HD coverage, datastream and component actuations. Choose the 3824 package for even more – system info, technical info, parameter configurations, change calibrations, wiring diagrams, injector coding and service schedules.

3823 ESI[Truck] Pro level software

For professional techs looking to do DPF regeneration, component actuation, special tests and automatic module identification for Class 6-8 trucks.

Best aftermarket coverage

- ▶ Truck brands: Freightliner, International, Kenworth, Mack, Volvo, Peterbilt, Sterling, Western Star
- ▶ Engine brands: Caterpillar, Detroit Diesel-MBE, Volvo, Mack, Navistar, PACCAR, Perkins, Deutz, MTU
- ▶ Brake systems
- ▶ Transmissions
- ▶ Trailer ABS
- ▶ In-depth heavy-duty, medium-duty
- ▶ Light-duty basic

Functions and efficiency technicians need

- ▶ Fault code report for entire truck
- ▶ Automatic vehicle ID
- ▶ Read & clear fault codes
- ▶ Cylinder cut-out
- ▶ Injector actuations
- ▶ Key component actuations
- ▶ Bluetooth wireless to VCI
- ▶ Compatible with industry software including most OEM's
- ▶ Optional: repair information and troubleshooting

3824 ESI[Truck] Expert level software

For expert techs wanting all the functions of 3823 plus system info, technical info, parameter configurations, change calibrations, wiring diagrams, injector coding and service schedules.

All the ESI[truck] Pro features plus expert-level diagnostics:

- ▶ System tests (some automated)
- ▶ Leakage tests
- ▶ Injector coding and trim files
- ▶ Calibrations (including VGT)
- ▶ Adjustments and settings
- ▶ Wiring diagrams
- ▶ Technical data
 - Component locations
 - Installation spec's
 - Component Spec's
 - System operating spec's

Learn more or request a demo at boschdiagnostics.com/pro.

ESI[truck] Software Packages features	Professional Packages		Expert Packages	
	3823BSC	3823	3824BS	3824
10" tablet PC included	N/A	✓	N/A	✓
RP1210 communication interface	✓	✓	✓	✓
Create and print reports*	✓	✓	✓	✓
DPF regeneration and maintenance resets	✓	✓	✓	✓
Component actuations	✓	✓	✓	✓
Actuation tests	✓	✓	✓	✓
Data stream tables and graphing	✓	✓	✓	✓
Read and clear trouble codes	✓	✓	✓	✓
System tests (some automated)	N/A	N/A	✓	✓
Leakage tests	N/A	N/A	✓	✓
Injector coding and trim files	N/A	N/A	✓	✓
Calibrations (including VGT)	N/A	N/A	✓	✓
Adjustments and settings	N/A	N/A	✓	✓
Wiring diagrams	N/A	N/A	✓	✓
Technical data	N/A	N/A	✓	✓
One-year warranty	✓	✓	✓	✓
Troubleshooting subscription for faster diagnosis of engine, brake, transmission, ABS coverage and more	N/A	N/A	Optional	Optional

*HD Diagnostics coverage: Freightliner, International, Kenworth, Mack, Volvo, Peterbilt, Sterling, Westernstar, MD Trucks, Isuzu, GM and Ford.

*Engine coverage: Caterpillar, Cummins, Detroit Diesel-MBE, Deutz, MTU, Navistar, PACCAR, Perkins and Volvo, and includes medium- and light-duty software.

Adapters

3824-06

Bosch ESI[truck] Trailer Adapter

7-pin PLC adapter for trailer ABS diagnostics

- ▶ J2497 Power Line Carrier (PLC) communication compatible
- ▶ Allows direct connection to trailer
- ▶ Works with tractor present or without the tractor present
 - External power supply is necessary without tractor
- ▶ Bosch ESI[truck] trailer ABS coverage for Bendix, Haldex, Meritor Wabco and Wabash systems
- ▶ Compatible with 3824, 3824BSC, 3823 and 3823BSC diagnostic tools



3824-10

Bosch ESI[truck] 9 Pin Adapter Cable High Speed Comm

- ▶ 9-pin heavy-duty diagnostic connector
- ▶ High-speed diagnostics communication
- ▶ Backward compatible with older black 9-pin vehicle connectors
- ▶ Compatible with 3824, 3824BSC, 3823 and 3823BSC diagnostic tools



License Renewal

3824-08

Bosch ESI[truck] License Renewal

12-Month Security Card includes one year of advanced diagnostic software for 3824, 3824BSC



Subscription

3824-08R

Bosch ESI[truck] Repair Information Subscription 3824-08R

- ▶ Fixes for +13,000 trouble codes
- ▶ Fixes for engine symptoms
- ▶ Can be added to 3824, 3824BSC, 3823 or 3823BSC diagnostic tools



Extended service contracts available for all ESI[truck] software packages

1, 2, & 3 year service contracts available. Contact ToolGuard for more information at 1-800-233-7055

High-pressure leak detection for heavy-duty system diagnostics & repair

169950000

HPT 500 Features

- ▶ Produce leak detection "smoke" at higher pressure than standard machines (up to 20psi) for higher pressure systems
- ▶ Higher flow rate fills the system with smoke up to 5 times faster
- ▶ Ideal for finding leaks in exhaust after-treatment systems
- ▶ Test entire system, from intake to exhaust, in one 15 minute test
- ▶ High-pressure and large volume systems found in heavy-duty truck & turbocharged passenger vehicles



169950001

HPK 200 Accessory Kit for HD and Medium Duty Applications

- ▶ Cooling system adapter
- ▶ SmokeMeister wands
- ▶ Exhaust stack retention hoop
- ▶ Power intake adapter 3.9" (2 included)
- ▶ Accessory storage case
- ▶ Halogen inspection light
- ▶ Vapor producing fluid
- ▶ Ball-end hex point L key
- ▶ Oxygen sensor port adapter
- ▶ Temperature sensor port adapter
- ▶ Pressure sensor port adapter
- ▶ Block off coupler
- ▶ Detachable 12V DC power cable
- ▶ Quick start guide



Medium and heavy-duty diagnostics for heavy-duty and aftermarket shops

Ideal for heavy-duty shops as a second diagnostic tool and mobile repair trucks
Cost-effective solution for aftermarket shops in need of heavy-duty coverage

1699200239

HDS 200 Features

- ▶ Brilliant Color Display
- ▶ Rugged enclosure for durability
- ▶ Class 4 – Class 8 truck coverage featuring "Automatic Protocol Search"
- ▶ HD J1587 / J1708 and J1939 CAN, Engine, Transmission/ABS coverage and more
- ▶ Global OBD II Quick Test
- ▶ Gasoline and diesel engine coverage
- ▶ Read and clear diagnostic trouble codes
- ▶ Live vehicle data includes
 - Engine speed
 - Engine ECU temperature
 - Percent acceleration pedal position
 - Engine intercooler temperature
 - Engine coolant temperature
 - Battery voltage
 - Alternator voltage output
 - Ambient air temperature
 - Air inlet temperature
- ▶ On-screen definitions of diagnostic trouble codes



HDS 200 Includes

HD Scan tool, 9 Pin Deutsch Cable, 6 Pin Deutsch Cable, 16 Pin HD/OBD II Cable, USB Cable, Quick Start Guide, Carrying Case and 1-Year Warranty.



3893 ENCORE

Fastest from code-to-fix

- ▶ OE-level Domestic / Asian / European Coverage
- ▶ 30 million on-tool fixes, maintenance tests and symptom assist
- ▶ Direct link to Identifix and other tech forums
- ▶ Industry-leading light-duty diesel coverage
- ▶ 7" touch screen

Lifetime hardware warranty*
Made in USA with globally sourced components



3896 EVOLVE

All features of the OTC Encore plus

- ▶ *The industry's best and only tool with full-system wiring diagrams*
- ▶ Wireless, J2534 compliant VCI
- ▶ Dual-band Wi-Fi for secure connections to shop WiFi and wireless VCI
- ▶ Front and rear-facing camera
- ▶ 10.4" hi-res touch screen

Lifetime hardware warranty*
Made in USA with globally sourced components

boschdiagnostics.com/pro

*Lifetime warranty applies only to tool hardware as long as owner maintains an active diagnostics subscription. Details at otctools.com.

OTC 3914 BATTERY & STARTING/CHARGING SYSTEMS TESTER



3914

- Test automotive batteries and create health reports
- Works on 6V and 12V automotive batteries - Regular Flooded, Enhanced Flooded, AGM, EV and Start-Stop.
- 12V/24V charging/starting systems tests
- Test charging and starting system health to diagnose charging issues
- Email test results (Stores 2,000 test records)
- Test batteries with as little as 1.5V
- 3 LED indicators (Blue: Connected, Green: Power, Red: Trouble)
- 20-inch cable with durable clamps
- Works with Encore or Evolve software version 2.10 and newer
 - 2.10 software includes a new battery and system test app
 - Communicates wirelessly to Encore & Evolve via Bluetooth



✓ Works with Encore or Evolve software version 2.10 and newer

TRIAGE TOOLS WITH CODECONNECT®

READ CODES AND FIND THE FIX WITH OTC

Triage scan tools range from simple code readers to advanced diagnostic tools featuring live engine data, CodeConnect®, ABS and Airbag coverage. All scan tools will work with vehicles 1996 and newer, OBD II and CAN, with optional coverage for pre-1996 vehicles available.



3208 OBD II & ABS Scan Tool
3209 OBD II ABS & Airbag Scan Tool
3210 CodeConnect® with ABS & Airbag
3211 OBD I & II Scan Tool

Product Comparison	3208	3209	3210	3211
OBD II & CAN compatible	•	•	•	•
(All 1996 and newer vehicles)	•	•	•	•
On-screen codes, definitions and emissions status	•	•	•	•
Erases codes and turns off the Check Engine Light	•	•	•	•
Live data and freeze frame data	•	•	•	•
ABS/Airbag (Most 1996-2013 GM, Ford, Chrysler, Honda, Hyundai, Nissan & Toyota)	ABS only	•	•	•
Manufacturer enhanced definitions	•	•	•	•
AutoID™ identifies vehicle being scanned	•	•	•	•
Color screen	•	•	•	•
Graphing live data		•	Dual PID	Dual PID
Internet updateable		•	•	•
Multilingual menu & code definitions		•	•	•
Record and play back data		•	•	•
Battery / alternator / charging system monitor		•	•	•
OBD II Modes 1-A are supported including Mode 6 data		•	•	•
CodeConnect® over 26 million fixes			•	•
OBD II Ford on-demand tests			•	•
Oil light & battery reset			•	•
Expanded European engine and ABS trouble code coverage			•	•
ABS live data and sensor reading			•	•
Steering and brake service resets			•	•
OBD I coverage (1994 – 1995 GM & Ford, 1989 – 1995 Chrysler & Toyota)				•



3838 Standalone TPMS tool with Bluetooth OBD II

The OTC 3838 is both a sensor activation and diagnostic device that features a wireless OBD II module for TPMS sensor registration. The tool works with all OEM and aftermarket sensors.

- Exclusive wireless OBD-II module for TPMS sensor registration.
- Standalone TPMS tool with activation, relearn & diagnostic capabilities.
- Three years of software updates included.
- Allows for cloning of universal sensors.
- Key fob signal test and infrared print capabilities.



3415 CAN Test Box Breakout Box for Scan Tools

- Connects between Diagnostic Link Connector (DLC).
- Connect leads for increased diagnosis, analysis, and monitoring.

Useful Functions

- LEDs display signal detection – Flashing LED's
- Magnifies DLC
- Displays battery voltage with warning

SUBSCRIPTION SOFTWARE

3893-LTW

Encore 1-year subscription and Lifetime hardware warranty

Encore Domestic, Asian and European Software 1-year subscription kit provides a year of frequent and valuable updates for new coverage, coverage enhancements, repair information, application improvements and includes the Diagnostics for Life* lifetime hardware warranty.

Diagnosics for Life* lifetime hardware warranty means OTC supports your Encore for as long as you own it, as long as you update it!

The "hardware warranty" applies to the Encore scan tool tablet only. Accessories, such as cables, adapters, batteries and case remain the 90 Day factory warranty from purchase.



3895-08

OTC Genisys Touch Software Update

Genisys Touch Domestic, Asian and European Software update kit provides new coverage, coverage enhancements, repair information and application improvements.



3167

Battery & Electrical System Diagnostic Tester

- Digital circuitry precisely controls battery test loads to accurately determine battery conditions.
- Tests both flooded lead acid and AGM/gell cell batteries accurately—down to 1 volt state of charge.
- Tests vehicle starting and charging systems with minimal user interaction.
- Tests all 6- & 12-volt batteries with a 50-2000 CCA operating range.
- Scales: CCA, CA, AHR, MCA, JIS, DIN.
- Removable/auto-sensing leads. (3' leads included in kits, optional 10' leads available.)
- Optional amp clamps for current drain tests and starting/charging measurements.
- Includes SABRE HP, 3' test leads, side-post terminal adapters, instruction manual, and molded-plastic carrying case.

3834T

OTC TPR Activation Tool VEHICLE COVERAGE THROUGH 2016

- Lower cost kit for use with the Genisys Touch scan tool or as a stand alone tool.
- Works on vehicle TPMS sensors through 2016.
- Bright graphic display and simple navigation buttons enable vehicle selection for fast activation.
- Automatically adjusts activation output power to eliminate cross activation of near sensors.
- Tool includes a 6 month update subscription from www.tpmsupdates.com



Fastener Service

NEW



5932-24
External Torx® PLUS Socket

OTC 5932-24 is a 24mm External Torx® PLUS Socket specially designed with a reduced chamfer for immediate "lobe to bolt head" hook up. Required for the 2017 Ford Super Duty pick-up bed where a low profile 24mm Torx® PLUS bolt head is used. S2 Steel gives excellent durability and the industrial finish resists corrosion. Limited Lifetime Warranty. Not rated for use with impact tools.



TORX® Individual Socket Sets

- 6100**
Standard TORX® Socket Set T10 – T60 (12 pc)
- 6151**
External TORX® Socket Set (7 pc)
- 5905**
Tammer-Resistant TORX® PLUS Socket set (11 pc)
- 6145**
Tammer-Resistant TORX® Socket set (7 pc)
- 5931**
External Torx® PLUS Socket Set (8 pc)
- 5942**
XZN Super Short Socket Bit Set (8 pc)
- 6160**
Fraction Hex Socket Set (7 pc)
- 6170**
Metric Hex Socket Set (7 pc)
- 6180**
TORX® Plus Socket Set (9 pc)
- 5933**
MortorQ® Super Bit Set (5 pc)

5900A-PLUS
Master Torx Bit Socket Set plus special 24mm External Torx PLUS Socket

Updated 53-piece Master Torx Bit Socket Set plus special 24mm External Torx PLUS Socket required for Ford Super Duty pick-up beds starting model year 2017. Socket kit includes various sizes of Torx, Torx PLUS, Tamper Resistant Torx, Bit Sockets and External Torx Sockets in 1/4", 3/8" and 1/2" square drive. Convenient hard plastic clamshell case for protection and organization. Not rated for use with impact tools.



NEW

✓ **5932-24 FREE WHEN PURCHASING 5900A-PLUS**

6792
Transmission Fluid Refill with Adapters

- Connect to shop air supply to extract or dispense fluids
- Automatic pressure relief for safe operation
- Switch between Dispensing and Extraction by simple turn of valve
- Easy "Push On" quick connects, and Trigger lock for continuous flow
- Includes universal flexible nozzle
- Includes the 6792-EDB Extraction Dispenser Bottle and 6792-TFA Transmission Fluid Adapter (14 piece "OE style" ATF adapters)



NEW



NEW

NEW

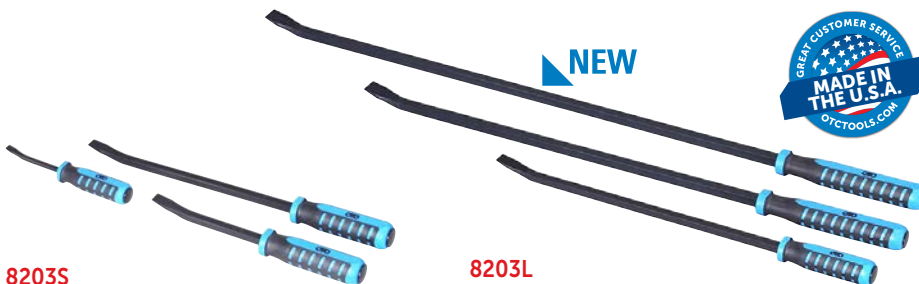


6792-EDB
Extraction Dispenser Bottle

- Connect to shop air supply to extract or dispense fluids
- Automatic pressure relief for safe operation
- Switch between Dispensing and Extraction by simple turn of valve
- Easy "Push On" quick connects, and Trigger lock for continuous flow
- Includes universal flexible nozzle

6792-TFA
Transmission Fluid Adapters

- 14 piece "OE style" ATF adapters
- Vehicle application reference included
- Convenient storage case



NEW



8203S
OTC Handled Pry Bars (3 PC)

- Includes 8", 12", and 18" lengths
- Dual durometer handle for great ergonomics
- Striking cap - contacts bar - protecting handle

8203L
OTC Handled Pry Bars (3 PC)

- Includes 24", 36", and 48" lengths
- Dual durometer handle for great ergonomics
- Striking cap - contacts bar - protecting handle
- Made in USA



4484

Weather Pack Ratcheting Crimper Kit

Now you can manage environmentally sealed connection systems on your vehicle with the OTC 4484 Weather Pack Crimper Kit. Weather Pack connection systems are designed to protect against exposure to heat, moisture, and contaminants with unflinching performance. The OTC 4484 comes with 2 interchangeable crimping dies, covering wire range AWG 22 / 20-18 (DIN: 0.35 / 0.5-0.8 mm²) and AWG 16-14 / 12 (Din: 1.0-2.0 / 3.0 mm²). The dies are easily interchanged - simply slip into place and are magnetically secure. The inside lid decal shows how the Weather Pack crimp is properly made. These connections can be found on automobiles, Class 7-8 Tractors, Motorcycles - just about everywhere.



2497

3 Piece Push Pin/Body Clip Pliers Set

Remove plastic body fasteners and clips faster in nearly any location. A set of three push pin / body clip pliers includes straight, 45° and 90° jaws to reach in wheel wells, under bumpers and behind the dash to remove retaining clips. The various jaw angles help access hard-to-reach places while providing maximum leverage to remove clips quickly and without damage. The unique design lifts the center pin and pulls body clips without damaging anchors, eliminating the need to provide replacement clips. Reusing these fasteners saves money and time searching for replacements of various shapes and sizes. The 3-piece set comes with an OTC lifetime warranty against defects in material or workmanship.



6980

Brake Drum and Rotor Puller

- Handles large components such as brake drums, rotors, drive wheels, gears, flywheels, and pulleys.
- One person can easily set the tool in place and use for tough pulls even where there is little access to insert the jaws.
- Spread to 12-3/4" and 5" of reach.
- 7-tons of force, yet weighs less than 10 pounds.
- Can be used with air tools to reduce time and fatigue.



5943

9-Piece Power Driver Socket Extensions

The new 5943, 9 piece Power Driver Socket Extension set from OTC adds versatility to your existing power tools and socket sets. Each extension uses a 1/4" hex shank for adjustable chuck drills with 1/4", 3/8" or 1/2" square drive on the other end for sockets. 3 square drive sizes - 1/4", 3/8" and 1/2" and 3 lengths for each - 2" 6" and 12". Now use your sockets with your cordless power tools for short, medium and long reach applications. The 5943 is a great choice for running up multiple bolts like oil and transmission pans or rear ends instead of ratcheting each one by hand. Save your time for proper torquing instead of hand turning your bolts. Limited lifetime warranty.

NEW



6617

Alternator Pulley Service Kit

- Overrunning alternator pulley and Overrunning alternator decoupler pulley are designed to extend belt life and belt tensioner life.
- These tools hold the alternator shaft still so the pulley can be removed or installed.
- Kit includes: Decoupler tool assembly, 17 mm hex drive, 17 mm Allen wrench 110 mm socket extension, 28 mm / 21 mm hex cap nut driver, 28 mm / 18 mm hex cap nut driver, 22 mm hex cap nut driver



6616

GM Water Pump Holding Tool

- Holds timing chain in place so water pump can be removed for service.
- Special design allows easy installation regardless of timing chain orientation, and prevents bolts from falling into the timing case.
- Simply remove access plate from front cover and install the tool.
- Tool saves costly loss of timing on 2002-current GM 2.2L and 2.4L EcoTech motors found in Chevrolet, Oldsmobile, Pontiac, and Saturn platforms.

OTC Lubrication Service



2300

Professional Lever Grease Gun

- Heavy duty die cast aluminum grease gun head.
- Grease gun head fitted with automatic air bleeder.
- Large diameter piston for working in cold.
- Built-in variable stroke for greasing fittings with limited access.
- Includes 6" bent steel extension, easy access 24" high pressure hose and 3 jaw slim coupler.
- 10,000 PSI.
- For use with 14 oz. grease cartridge.



2304

Professional Pistol Grease Gun

- Heavy duty die cast aluminum grease gun head with integrated die cast fixed handle.
- Grease gun head fitted with automatic air bleeder.
- Large diameter piston for working in cold.
- Built-in variable stroke for greasing fittings with limited access.
- Includes 4" straight steel extension, easy access 24" high pressure grease hose and 3 jaw slim coupler.
- 7500 PSI.
- For use with 14 oz. grease cartridge.



2310

Air Operated Grease Gun-Continuous Flow

- Heavy duty die cast aluminum grease gun head.
- Grease gun head fitted with automatic air bleeder.
- Larger pumping chamber, honed for rapid operation.
- Includes 6" bent steel extension, easy access 24" high pressure grease hose and 3 jaw slim coupler.
- 4800 PSI.
- For use with 14 oz. grease cartridge.



2332

Quick Connect Greasing Accessory Kit

- 7 piece Quick Connect Greasing Accessory Kit
- Includes 1 each of the following quick connect Accessories:
 1. Recessed lube adapter.
 2. Angle lube adapter.
 3. Narrow needle nose adapter.
 4. Seal off dispenser.
 5. Right angled grease coupler.
 6. Heavy duty hose fitted with spring guard and slim coupler.
 7. Grease injector needle 1.42" long x 18G.

2340

Heavy Duty Grease Gun Holder

- Great grease gun storage accessory.
- Can be mounted to walls, machinery, or heavy equipment.
- Design to retain your grease gun in high vibration environments.
- Works with all standard 14 oz. grease guns and 16 oz. suction guns.



2352

Lever Action Bucket Pump

- Fits 5 gallon pails.
- Includes 12" drum cover.
- 3 position handle for different fluid viscosity.
- Steel discharge spout.
- Supplied with 5' hose.
- Up to 4.6 oz. / stroke.
- For use with transmission differentials and heavier oils.



2359

Suction Oil Gun

- For use with gear oils to get them both into/out of gear boxes, transfer cases and differentials.
- 16 oz capacity and 14" hose.



2357

Brass Transfer Pump

- Drain oil from crankcase or ATF through dipstick tube – from underhood – not undercar.
- Pumps 3.2 oz per stroke.

2421

Safety air blow gun, snub nose rubber tip

- Impact and Weather resistant Nylon Body.
- Safety Venting in all tips.
- Corrosion Resistant Stainless Steel Nozzles.
- Drop Resistant Construction.
- Soft Rubber Grip and ergonomic design for convenience and comfort in extended use.
- Brass threaded air inlet.
- Variable speed trigger for control of amount of air dispensed.
- Conforms to OSHA STD 1910-95 (b) for max noise level when used with 90 PSI air pressure.
- Conforms to OSHA STD 1-13.1 for safety and are classified as safety Blow Guns.





7196

Crank & Cam Seal Service Kit

- Removes and installs camshaft and crankshaft seals on cars, trucks, vans and SUVs without damage.
- Includes a puller coupled with specialized puller legs that hook the seal for quick and easy removal.
- The interchangeable seal install adapters are designed for use with the cam or crank bolt. Kit services seal sizes of 21.5mm to 64mm.



6613

Variable Pin Spanner Wrench

- Universal design fits many different types of pulleys having slots or holes, including camshaft pulleys and crankshaft pulleys.
- Wrench is adjustable from 1-1/4 inch to 5 inches; works with a 1/2 inch ratchet or breaker bar.
- Set Includes: 3.5 mm pin, 4 mm pin, 4.5 mm pin, 5 mm pin, 6 mm pin, 7 mm pin, 10 mm pin and Handle



6678

Cam Gear Holder, 2 pack

- The holders clamp between the engine block or head and the back of the gear to lock it in place.
- Use on single, dual, or quad cam engines to hold valve timing during belt replacement.
- Excellent for diesel injection pump belt replacement.
- The cam gear holders universal design are quick and easy to install.



6679

Cam Gear Clamp & Holder Set

- The holders clamp between the engine block or head and the back of the gear to lock it in place. The cam gear clamp is used between two adjacent gears to lock them together and eliminate movement.
- Use on single, dual, or quad cam engines to hold valve timing during belt replacement.
- Excellent for diesel injection pump belt replacement.



4531

Harmonic Balancer Puller/Installer Set

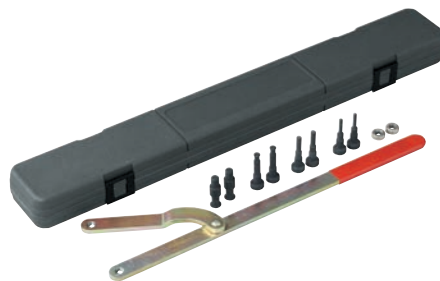
- For easy removal and installation of most harmonic balancers and drive pulleys which are press-fitted onto the crank-shaft.
- A bearing-centered circular 2/3-way puller flange handles 2-1/2" - 4-1/4" bolt circles. An assortment of metric and fractional bolts and adapters provide wide pulling coverage.
- A heavy-duty, 3/4" dia. forcing screw is internally threaded to fit the eight adapters to install harmonic balancers. Adapter sizes included: M16 x 2.0, M14 x 1.5, M12 x 1.5, 1/2"-20, 7/16"-20, 3/4"-16, 5/8"-18, and 9/16"-18.
- A blow-molded plastic storage case keeps set contents organized and protected from loss.



4530

Power Steering Pump Pulley Service Set

- A complete set of tools required to remove and install power steering pump pulleys of most domestic vehicles.
- Fits pulley hubs with diameters of 1-1/8", 1-1/4", 1-5/16" and 1-3/8".
- Includes the necessary adapters for servicing: GM 3.1L, 3100, 3400, and 3800 V6 engines, GM 2.3L Quad 4 four-cylinder engines, and Ford 4.6L and 5.4L V8, 6.8 V10 engines.



4754

Universal Pulley Holder

- Universal design fits many different size pulleys having slots or holes, such as camshaft pulleys or crankshaft pulleys.
- Wrench is adjustable from 1-1/2" to 8-5/8"; four different size step pins are interchangeable.
- Long handle enables technician to easily hold the pulley when tightening or loosening retaining bolts.



4645

Serpentine Belt Tool

- Fits tensioner pulleys with 13 mm-16 mm, 18 mm hex or 3/8" and 1/2" square drives.
- For hard to access tensioners; there are 13 mm and 15 mm 12-point wrenches built into the handle.
- 13 mm, 14 mm and 15 mm crows foot wrenches also included.



7654A

Serpentine Belt Installation Tool

- Durable tool provides extra control and reach during serpentine belt installation.
- Works equally well on V-belts and timing belts.
- Three-pin design for immediate push/pull capacity.
- Handle gives technician twisting control to install belts in confined, hard-to-reach areas.



7425

Stretch Belt Service Set

The Stretch Belt Service Set includes an install tool along with a removal tool. Both tools are placed on a pulley which is turned to slip-on or slip-off stretch fit belts without damage.



7424

Belt Holding Tool

- Keeps belt from falling off of a pulley during belt installation.
- Universal design to fit most pulley styles and sizes.
- Super strong magnet to hold the belt firmly on the pulley.
- Multiple holders can be used for belt applications that fit around many pulleys.
- Durable plastic housing with magnet for steel/iron pulley applications.



6673

Universal Belt Tension Gauge

- Belt tension gauges are used to check drive belt tension on drive belts to ensure maximum belt and bearing life.
- Scale reads 30-180 lbs.





4572

Valve Spring Compressor

- Designed to compress valve springs on overhead valve engines.
- Includes two valve spring adapters, which fit valve spring retainers up to 1" (25 mm) and 1-3/16" (30 mm).
- Unique, direct action compressor lever gives better visibility of valve spring retainers located in difficult access areas.
- Jaw opening of 1-3/8" to 5-5/8" (35 mm to 142 mm); throat clearance of 5-7/8" (150 mm).



4842

Heavy Duty Valve Spring Compressor

Used to compress valve springs for removal or installation. The heavy duty C-frame has a 9" opening and a 5" throat. Kit includes 16mm, 19mm, 23mm, 25mm, and 30mm valve spring retainer adapters.



4510

Hose Pinch Off Pliers Set, 3 Piece

- Shuts off flow through vacuum lines, fuel lines, coolant lines, etc.
- Cocking ratchet mechanism holds pivoting jaws tightly in place. Heavy-duty swivel jaws pivot to assure parallel pinching.
- Available separately:

4510-8 – 8" tool for small hoses and tight areas.

4510-10 – 10" tool for radiator and vacuum lines.

4510-12 – 12" tool for radiator and vacuum lines.



4522

Vacuum Hose & Fuel Line Removal Tool

- Designed to remove vacuum hose or fuel lines (3/16" to 1/2") from fittings or tubing.
- Simply place the black jaw on the fitting or tubing – the jaw will grip the material. Then use the silver jaw to push the vacuum hose or fuel line off the fitting or tube.



5606

Compression Tester Kit

Designed for complete compression testing on gasoline engines, including domestic, imports, motorcycles, marine, and small engines. Unique problem solving features for today's limited space engine compartments.

Features and benefits:

- Corrosion resistant nickel plated finish.
- Adapters work on both flat and tapered seat plugs.
- Extra long 25" flex hose gauge assembly with quick coupler, allows easy viewing out of cluttered engine compartment.
- 2-1/2" gauge features chrome bezel and rugged protective outer boot.
- Dual scale gauge reads 0-300 psi and 0-2100 kPa.
- 12" flex-14 mm standard reach.
- 12" flex-14 mm long reach.
- 10 mm, 12 mm, and 18 mm thread adapters.
- Rugged blow molded hard case with removable lid.
- Repair parts kit.



5613

Vacuum/Pressure Gauge Kit

Ideal for testing vacuum lines and components. Accurately tests low-pressure fuel systems. Quickly diagnose internal engine problems such as bad rings, valves and leaking head gaskets. Kit comes complete with adapter for most applications. Pin point hard to find problems such as cracked lines, PCV, fuel pump, fuel filters and more.

Features and benefits:

- Large 3-1/2" gauge features a chrome bezel and rugged protective outer boot.
- Dual purpose gauge reads vacuum and pressure.
- Dual scale gauge reads 0-30 in. Hg vac and 0-70 cm Hg, also reads 0-15 psi and 0-100 kPa.
- Built in rear hook allows gauge to be hung at eye level.
- Adapters for most applications.
- Blow molded hard case with removable lid.
- Detailed instruction chart.



5605

Deluxe Compression Tester Kit

Complete with standard and specialty adapters, this deluxe kit offers a complete package for compression testing on gasoline engines. Kit includes the deep well connector used on recessed plug well style heads and the Ford engine adapter using 16 mm thread plugs.

Features and benefits:

- Corrosion resistant nickel plated finish.
- Adapters work on both flat and tapered seat plugs.
- Extra long 25" flex hose gauge assembly with quick coupler, allows easy viewing out of cluttered engine compartment.
- 2-1/2" gauge features chrome bezel and rugged protective outer boot.
- Dual scale gauge reads 0-300 psi and 0-2100 kPa.
- 8" deep well 14 mm connector.
- 5" flex Ford 16mm adapter.
- 12" flex-14 mm standard reach.
- 12" flex-14 mm long reach.
- 10 mm, 12mm, and 18 mm thread adapters.
- Rugged blow molded hard case with removable lid.
- Repair parts kit.



5609

Cylinder Leakage Tester Kit

Quickly diagnose internal engine problems such as bad rings, valves and leaking head gaskets. Kit come complete with adapters for most applications.

Features and benefits:

- Dual 2-1/2" gauges feature chrome bezel and rugged protective outer boot.
- Scales read 0-100 psi and 0-700 kPa.
- Pressure regulated manifold includes quick couplers.
- Long flex 24" 14 mm hose.
- 10 mm, 12 mm and 18 mm thread adapters.
- Blow molded hard case with removable lid.
- Detailed instruction chart.



4411

Ratcheting Hose & PVC Cutter (Standard)

- Cuts hose and PVC up to 1-3/8" dia.
- Features metal frame and ergonomic handles for high leverage.
- Compound ratcheting action provides maximum cutting power.
- Will also cut cable and wires.



4412

Ratcheting Hose & PVC Cutter (Heavy Duty)

- Cuts hose and PVC up to 1-3/4" dia.
- Features metal frame and rubber padded ergonomic handles for high leverage and comfort.
- Compound ratcheting action provides maximum cutting power.
- Will also cut cable and wires.



6784 Euro/GM Oil Socket Kit

Popular oil filter wrenches for the GM, BMW, Audi, and VW. High quality, 3/8" drive, forged sockets designed to last a lifetime.

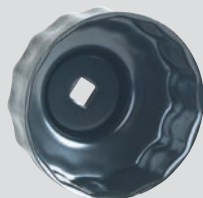
3-piece oil socket kit contains:

- 27 mm socket for the Cadillac STS 3.2L V6 and the Mercedes-Benz 1.8L I4.
- 32 mm socket for the 2.2L GM Ecotec and Saabs.
- 36 mm for the BMW M52, M60, M62, M70, & M73 engines; M-B OM604, 605, & 606 engines; VW/Audi VR6 engine.



6786 Oil Filter Cartridge Set

- Fits today's oil filter cartridge style filter applications.
- Short socket style allows for proper clearance when removing the filter element.
- 24mm – Cadillac, BMW. • 27mm – Cadillac, Mercedes, Buick, Saturn, Saab, Smart, VW.
- 29mm – Dodge.
- 32mm – Saturn, Saab, various GM.
- 35/36mm – Ford, Mini Cooper, Mercedes, BMW, VW/Audi, Mack Truck.
- 38mm – small Diesel engine applications.



6901 GM Oil Filter Socket

Applications: 1999–2002 Olds Intrigue and 2001–2002 Olds Aurora with 3.5L V6 engine.

- This is a required tool to remove the oil filter cap from the oil pan to access the filter cartridge.



6905 Subaru Oil Filter Socket—66.5 mm, 14 Flutes

- Socket fits between the exhaust manifold and the oil filter for easy removal and installation of the filter.
- Works on 2003–newer Subaru vehicles having the 2.5L 4-cylinder, turbo engine.



6903 Ford / Mazda Oil Filter Socket—75.6 mm, 14 Flutes

- Designed at 75.6 mm to fit 2.3L 4-cylinder engines.
- Works on Ford Fusion, Mercury Milan, Mazda 3, Mazda 5, and Mazda 6.



6906 Toyota Oil Filter Socket—65 mm, 14 Flutes

- Avalon**
- 2005–'07 V6 3.5L (2GR-FE), 1995–2004 V6 3.0L (1MZ-FE)
- Camry**
- 2007 V6 3.5L (2GR-FE), 2004–'06 V6 3.3L (3MZ-FE), 1994–2006 V6 3.0L (1MZ-FE)
- Camry Solara**
- 2004–'07 V6 3.3L (3MZ-FE)
- Highlander**
- 2004–'07 V6 3.3L (3MZ-FE) — also works on the hybrid version of this engine
 - 2001–'03 V6 3.0L (1MZ-FE)
- RAV4**
- 2006–'07 V6 3.5L (2GR-FE)
- Sienna**
- 2007 V6 3.5L (2GR-FE)
 - 2004–'06 V6 3.3L (3MZ-FE)
 - 1998–2003 V6 3.0L (1MZ-FE)



6904 Hyundai and Kia Oil Filter Socket—88.5 mm, 15 Flutes

- Works on newer Hyundai Sonata and Santa Fe 3.3L V6 engines.
- Works on newer Hyundai Azera, Veracruz and Entourage 3.8L V6 engines.
- Works on newer Kia Amanti, Sedona and Sorrento 3.8L V6 engines.



4568 Three-Leg Oil Filter Wrench

- Fits filters ranging from 2-1/2" to 5-1/4" (65 mm to 135 mm) in diameter.
- To turn the tool, use a 1/2" ratchet in the ratchet drive or a 13/16" wrench on the nut.
- Knurled legs provide extra gripping power.



4440 Heavy-Duty 3 Leg Filter Wrench Standard

- Self gripping design for true universal fit from 3" to 4-3/4".
- Heavy duty knurled leg design for extra grip and strength.
- 1/2" square drive with 21 mm hex option.



4441 Heavy-Duty 3 Leg Filter Wrench Large

- Self gripping design for true universal fit from 4" to 6 1/2".
- Heavy duty knurled leg design for extra grip and strength.
- 1/2" square drive.



4560 Small adjustable oil filter pliers

- 13-1/2" long; fits filters ranging from 2-1/4" to 5" (57 mm to 127 mm) in diameter.

4561 Large adjustable oil filter pliers.

- 18" long; fits filters ranging from 3-3/4" to 7" (95 mm to 178 mm) in diameter.



9850 Truck Wheel Bearing Locknut Sockets (6-pt.)

- Wheel bearing locknuts are easy to remove or install with these specially designed sockets. They're made of high-strength steel and resist rounding out.
- 21 wheel bearing locknut sockets (6 pt.) with tool board.
- Sockets are designed for use with 3/4" square-drive manual tools only. Impact tool use voids warranty.



9851 Wheel Bearing Locknut Sockets (8-pt.)

- Wheel bearing locknuts are easy to remove or install with these specially designed sockets. They're made of high-strength steel and resist rounding out.
- 18 wheel bearing locknut sockets (8 pt.) with tool board.
- Sockets are designed for use with 3/4" square-drive manual tools only. Impact tool use voids warranty.



9852 Wheel Bearing Locknut Sockets (6-pt.) or (8-pt.)

- Wheel bearing locknuts are easy to remove or install with these specially designed sockets. They're made of high-strength steel and resist rounding out.
- 12 popular sizes in 6- or 8-point.
- Sockets are designed for use with 3/4" square-drive manual tools only. Impact tool use voids warranty.

No.	Description
1901	Locknut socket (2-3/32")
1902	Locknut socket (2-3/8")
1904	Locknut socket (2-9/16")
1906	Locknut socket (3")
1908	Locknut socket (3-1/4")
1910	Locknut socket (3-1/2")
1912	Locknut socket (3-7/8")
1914	Locknut socket (4")
1915	Locknut socket (4-1/8")
1916	Locknut socket (4-3/8")
1918	Locknut socket (4-7/8")
1920	Locknut socket (2-1/4")
1921	Locknut socket (2-1/2")
1922	Locknut socket (2-5/8")
1923	Locknut socket (2-3/4")
1926	Locknut socket (3-3/4")
1928	Locknut socket (2-9/16" rounded)
1932	Locknut socket (2-7/8")
1934	Locknut socket (3-1/8")
1936	Locknut socket (2-3/8" rounded)
1939	Locknut socket (5-1/4")

No.	Description
1903	Locknut socket (2-3/8")
1905	Locknut socket (2-9/16")
1907	Locknut socket (3")
1909	Locknut socket (3-1/4")
1911	Locknut socket (3-1/2")
1913	Locknut socket (3-7/8")
1917	Locknut socket (4-3/8")
1919	Locknut socket (4-7/8")
1924	Locknut socket (3-3/8")
1925	Locknut socket (3-3/4")
1927	Locknut socket (3-13/16")
1929	Locknut socket (2-5/8")
1930	Locknut socket (2-7/8")
1931	Locknut socket (3-5/8")
1933	Locknut socket (2-7/8")
1935	Locknut socket (3-1/8")
1937	Locknut socket (2-3/4")
1938	Locknut socket (4-1/2")

No.	Description
1904	Locknut socket (2-9/16" hex)
1908	Locknut socket (3-1/4" hex)
1909	Locknut socket (3-1/4" 8 pt.)
1910	Locknut socket (3-1/2" hex)
1913	Locknut socket (3-7/8" 8 pt.)
1914	Locknut socket (4" hex)
1915	Locknut socket (4-1/8" hex)
1921	Locknut socket (2-1/2" hex)
1922	Locknut socket (2-5/8" hex)
1923	Locknut socket (2-3/4" hex)
1928	Locknut socket (2-9/16" hex rounded)
1932	Locknut socket (2-7/8" hex)



1944

Budd Wheel Sockets

- Metric sizes for Isuzu, Hino, Mitsubishi Fuso, and import trucks; fit front and rear axle wheels.
 - 1-1/2" hex Budd wheel socket for American-made trucks with dual rear wheels.
- These sockets work on the import truck Budd wheels. Their extra deep design lets you remove both nut and stud with just the one socket. Usable with a 1" square drive impact wrench.

1944 – Consists of 1945A, 1946A, 1947A, 1948A, and 1949A, in a blow molded organizer case.

1945A
35 mm hex socket with 17 mm sq.

1946A
38 mm hex socket with 20 mm sq.

1947A
41 mm hex socket with 21 mm sq.

1948A
33 mm hex Budd wheel socket. For Mack Midliners, White Volvo, and other import trucks w/dual rear wheels.

1949A
1-1/2" hex Budd with 13/16" square wheel socket. For American-made trucks with dual rear wheels.



5047

Lug Nut Cap Remover

- Remove chrome-plated lug nut caps from heavy-duty trucks and trailers
- Coated jaws won't slip off caps for fast, damage-free removal

5047LP

Lug Nut Cap Remover Locking Pliers

- Designed to remove lug nut caps found on heavy duty truck and trailers quickly and easily without damage.
- Locking plier design with specially coated jaws apply maximum grip on the lug nut caps without damage.





30-Ton King Pin Pusher Set

The Heavy Duty Kingpin and Brake Anchor Pin Pusher utilizes its cylinder and hydraulic force to replace traditional time-consuming torch and hammer methods. It helps get the job done in minutes instead of the better part of a day. Five special collars and two pins allow this unit to work on both straight and tapered kingpins. It accommodates sizes from 7/8" to 2" in diameter and up to 11-1/4" in length. With 30 tons of force, it can push out even the most corroded kingpins. The anchor pin can be removed quickly by using the special adapter installed in the pusher's base block and the unit positioned over the brake's spider. Included are the 4121A-MA hydraulic cylinder and 4012A Two-Speed Hand Pump that make the job easy.

4240A

Complete kingpin and anchor pin pusher set with hydraulics.

4241

King- and anchor-pin pusher with anchor pin adapters without hydraulics.



4295

Wheel Stud Service Kit

- Works on most hubs for installation and removal.
 - All sizes of studs.
- Installation done by pushing on the head, eliminating the need for threaded adapters.
 - Reduces number of adapters required
 - Reduces damage to studs
 - Increases ease of use
- Remove and install 10 studs in only 10-15 minutes (compare to 20-30 minutes for more expensive competitive products).
- Can be powered with an impact wrench, no hydraulic power source required.
- No need to remove hub from vehicle.
- Reduces risk of damage to hubs, studs, and bearings when using tool.
- Weighs only 12 lbs., assembled to remove studs and 14 lbs., assembled to install studs.



7180

Universal Bearing Cup Installer

This handy, adjustable tool is designed to install wheel-bearing cups in a wide range of heavy-duty axles. Simply adjust and lock the jaws to the cup I.D., slip on the new cup, set it in the bore, and drive it in with a hammer. The tool helps eliminate the damage caused by makeshift methods.

- Works on axles from 11,000 to 50,000 lb. capacity.
- Adjusts to fit 3-5/8" to 6-1/2" O.D. bearing cups, which adds up to as many as 30 individual drivers.



5054

Air Brake Service Kit

This kit has the tools needed to remove slack adjusters and push-rod clevis pins used in the S-cam brake systems of class 7 and 8 vehicles.

- Works on manual or automatic slack adjusters.
- Includes Nos. 5055 and 5056 slack adjuster pullers, 5057 brake clevis pin press, and a plastic storage case.



5080A

Truck Front Leaf Spring, Pin, and Bushing Service Set

- Delivers 10 tons of hydraulic force to remove and install truck front spring eye bushing assemblies quickly and easily.
- Services bushings with diameters from 1-1/4" through 1-7/8", and pin diameters from 7/8" through 1-1/8". Handles all popular OE and aftermarket components, including Horton pin and bushing assemblies.
- Service bushing assemblies, in many cases, without removing leaf spring hangers and spring assemblies from the vehicle.
- All accessories are included except the hydraulic hand pump and hydraulic hose which must be purchased separately.



5038

Brake Anchor Pin and Bushing Service Set

With the No. 5038, there's no need to remove the bearing hub assembly just to replace the pins and bushings on 16-1/2" S-cam trailer and tractor "Q" brake systems.

- Special tooling and our C-frame press get you past the hub assembly, so you can do the job quickly and professionally without damaging other parts.
- Includes everything needed for removal and replacement.



5081

S-Cam Air Brake Spring Tool

- Eliminate makeshift, unsafe methods of unhooking and reconnecting retaining springs when replacing brake shoes on heavy-duty tractors and trailers.
- Simply hook the retaining spring loop and press down. Lever action against the axle makes the job a snap!



5085

Hub Oil Seal Puller

- Eliminates bearing and hub damage that can occur when a punch and hammer is used to remove the seal.
- Extra long 28" handle provides leverage, unique pulling head design quickly and easily removes the seal in one piece.
- Built from the highest quality heat-treated steel.
- Removes hub seals on trailer and truck axles, including truck steering axles.



Davco Diesel Filter Wrenches

- Found on Caterpillar, Cummins, Detroit Diesel, International, Mack, Mercedes-Benz, Volvo and other engines.
- Durable, stainless steel construction.
- Precise, laser-cut angles.
- Opens vent cap also.
- Soft, ergonomic handle.

6914

Fits Davco Diesel filter models, 232-233-234.

6915

Fits Davco Fuel filters 382 & 384.



Head adjustable to 19-1/2" x 18".

1728

Air-Assisted 1,000 lb. Capacity High-Lift Transmission Jack

- Unique foot pedal design gives you complete control over the air-driven first stage to rapidly raise the mounting head to the transmission; second stage is hydraulically actuated — permitting precise operator control during removal and installation.
- Transmission mounting head features four ratcheting brackets that adjust to fit a wide range of transmissions. Four-wheel base with locking swivel casters provides stability and portability.
- Safety bypass prevents damage caused by a system overload.
- Carries OTC Lifetime Warranty®.

Specifications:

Min. height is 34-1/2"

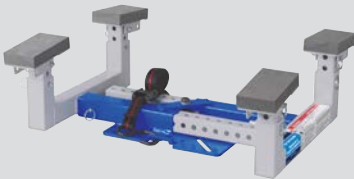
Max. height is 72"

Max. forward tilt – 50°

Max. backward tilt – 20°

Max. side tilt (either side) – 10°

Leg width – 41"



1758

Fuel Tank Handler

- Provides safe and efficient handling of fuel tanks.
- Adjustable from 24" to 38" horizontally, and 7" to 11" vertically, to service tanks up to 40 gallons.
- Universal adapter plate fits all OTC and virtually all competitive transmission jacks and power train lifts in the market.
- Gearing mechanism ensures equal extension of lift arms to ensure load is properly balanced over jack.
- Four adjustable support risers can be individually adjusted to ensure a perfect fit to any fuel tank design.
- Cross-link polyethylene foam pads protect tank from damage.

5015A

Truck Clutch and Flywheel Handler

- Handles 14" and 15-1/2" clutch assemblies weighing up to 150 lbs.
- Lifting range of 9" to 37". Swivel casters provide easy maneuverability.
- Includes a 2" spline shaft with a 1-1/4" pilot to aid in alignment.



5019A

2,200 lb. Capacity Low-Lift Transmission Jack

- Special mounting adapter fits popular Eaton® Fuller® RoadRanger® transmissions used on nearly all Class 7 and 8 heavy-duty trucks. Mounting plate angle is adjusted with the turn of a wrench.
- Swiveling pump handle permits ease of operation in restricted working spaces. Fast-acting pump quickly raises lifting arm.
- Includes No. 540231 adapter for Eaton® Fuller® RoadRanger® transmissions.

Specifications:

Min. height is 8-1/4"

Max. height is 36-1/2"

Max. forward tilt – 15°

Max. backward tilt – 20°

Side tilt (either side) – 12°

Overall length – 52"

Overall width – 32-1/2"



1591B

10-Ton Combination Air Lift and Support Stand

- 40" removable handle and 8" air hose.
- Capacity – 10 tons (at 200 PSI air).
- Stroke – 10-7/8".
- Minimum height (unpinned, no extension) – 18-1/4".
- Maximum height (pinned in top hole, with extension) – 51-1/4".
- Covered by OTC Lifetime Warranty®.

Not responsible for errors in description or pricing.
17-68 Q1 2018 edition, Printed in U.S.A.



1788B

22-Ton Capacity Under-Axle Jack

- Self-retracting, spring return feature.
- Long 49-1/2" T-handle lets you easily position jack under vehicles with long overhangs.
- One pull of the handle activates the self-retracting 22-ton capacity ram without having to crawl underneath the vehicle.
- Jack has large rubber-tired wheels.
- Lifting range: 3/4" saddle Max. height 17-3/4"; 1-15/16" saddle Max. height 18-15/16"; 3-7/8" saddle Max. height 20-7/8"
- Cylinder stroke, 4-1/2"; extended screw length, 4-1/4"; PSI range, 90-145.



5202A

2-Ton Service Jack

- Min. height 3"; Max. height 18 1/4"
- Ergonomic handle for user comfort and easy mobility.
- Foot pedal for quick approach of the lifting saddle to load. Built-in tray for fasteners and tools.
- CE certified, PALD compliant.
- Covered by OTC Lifetime Warranty®.

6- & 10-Ton Heavy-Duty Service Jacks

- Ergonomic handle for user comfort and easy mobility.
- Foot pedal for quick approach of the lifting saddle to load. Built-in tray for fasteners and tools.
- CE certified, PALD compliant.
- Covered by OTC Lifetime Warranty®.

5206

6-ton HD service jack. Min. height 6-11/16"; Max. height 22-13/16"

5210

10-ton HD service jack. Min. height 6-11/16"; Max. height 23-13/16"