

MUSCLE TOOLS

Electronic Diagnostics | Special Tools | Shop Equipment | A/C Tools

Q2 2019 Edition

OTC

ROBINAIR

actron

BOSCH

PURCHASE AN OTC EVOLVE SCAN TOOL, RECEIVE AN OTC 1630 SERVICE CART



- ✓ LIFETIME WARRANTY*
- ✓ FASTEST TO FIX
- ✓ EXPANDED COVERAGE

FIX MORE CARS FASTER

OTC DIAGNOSTICS POWERED BY BOSCH

- OE-level Domestic / Asian / European Coverage
- All system wiring diagrams
- Wireless, J2534 compliant VCI
- Ultimate online and on-tool access to top reported fixes and repair information
- Dual-band Wi-Fi for secure connections to shop Wi-Fi and wireless VCI
- Front- and rear-facing camera
- 10.4" hi-res touch screen

OTC 1630 SERVICE CART

- 5" tall top bin provides safe storage for diagnostic tools, electronics and more
- 20" drawer depth for generous storage
- Holds up to 500 pounds
- Large 5" casters with two locking wheels
- Locking top with gas shocks



✓ FREE SERVICE CART

Purchase must be made between April 1, 2019 – June 30, 2019



New Bosch ESI[truck] Heavy Duty Diagnostic Solutions

See page 2

PROMOTIONS

All promotions valid Q2 2019, unless otherwise stated. Some restrictions may apply. For promotion details and to redeem, visit Boschrebates.com. Dated proof of purchase and/or serial number(s) required when registering for rebate. Must redeem within 30 days of promotion end date.

Purchase an eligible Robinair A/C machine and a Leak Detector together, and receive a FREE Robinair service bay banner



Eligible A/C machine models:

- ▶ 34288NI, 34788NI, 34788NI-H, 34988NI, AC1234-4 and AC1234-6

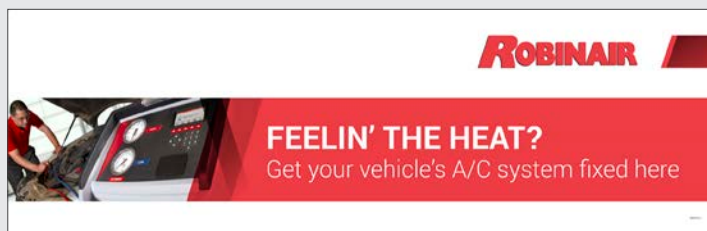
Eligible Leak Detector models:

- ▶ LD3, LD5, or LD7 See page 15

Purchase must be made between April 1, 2019 – June 30, 2019

FREE

99034 Robinair service bay banner 30" x 96"



See pages 15 & 16

New 2019 A/C system capacity databases

See pages 15



34411-J
134a database
For 34788, 34788-H
& 34988 machines



34412-D
134a database
For 34288NI, 34788NI,
34788NI-H & 34988NI machines



34413-B
1234yf database
For AC1234-4
machines

Unbeatable coverage for HD trucks, construction equipment and more



NEW

Increase Shop Efficiency with the Bosch ESI[truck]

DPF regeneration, component actuation, special tests and automatic module identification for Class 6-8 trucks and more.

3824A

Truck, engine, and system coverage

- ▶ **Truck brands:** Freightliner, International, Kenworth, Mack, Volvo, Peterbilt, Sterling, Western Star, and more
- ▶ **Engine brands:** PACCAR, Perkins, Detroit Diesel-MBE, Mack, Navistar, Caterpillar, Deutz, MTU, and more
- ▶ **System coverage:** transmissions, brake systems, trailer ABS, exhaust treatment, and more

Expert-level diagnostics

- ▶ Automatic vehicle ID
- ▶ Fault code reading, reporting, clearing
- ▶ Diesel particulate filter (DPF) regeneration
- ▶ Cylinder cut-out
- ▶ Injector coding and trim files
- ▶ Key component actuations
- ▶ Special tests
- ▶ Vehicle parameter modifications



3824-08R

Troubleshooting & Repair Subscription

- ▶ Faster, more efficient heavy duty vehicle repairs
- ▶ 13,000+ procedures guide user through each step to troubleshoot vehicle issues
- ▶ Procedures by DTCs or by vehicle symptoms
- ▶ Technical Service Bulletins (TSBs) included

ESI[truck] Off-Highway Upgrade Cable Kit with Introductory Software License (3824CBL-UPG)

Add off-highway vehicle and machinery coverage for multiple manufacturers to your 3824 or 3824A ESI[truck] scan tool.

Coverage included for:

- Construction equipment
- Agricultural vehicles
- Stationary engines
- Street sweepers and more
- ▶ **Manufacturer coverage:** Caterpillar, John Deere, Kubota, Perkins, Volvo, Massey Ferguson, SISU, Deutz, Deutz-Fahr, MTU, and more
- ▶ **System coverage:** Gearbox, HVAC, engine, steering, hydraulic systems, suspension, electronic modules, antipollution, central computer and more
- ▶ **Diagnostic coverage:** Manual processes, diagnosis info, measurable values, component actuations, ECU data, parameter IDs (PIDs), calibrations and resets, system technical data, wiring diagrams, vehicle technical data and vehicle maintenance info

3824CBL-UPG

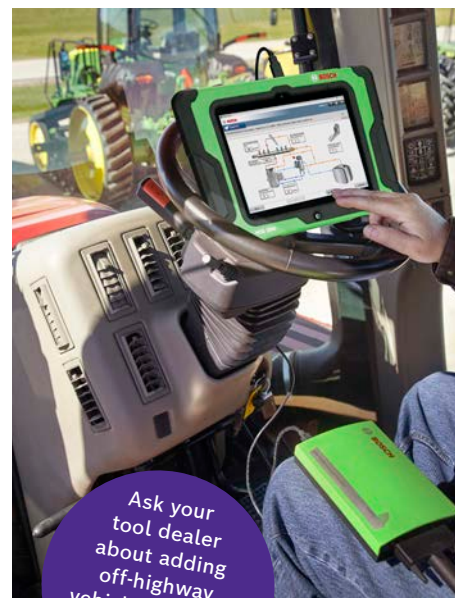
Kit contents:

- ▶ 10 cables for machinery, construction equipment, agricultural vehicles and more
- ▶ ESI[truck] off-highway software package with full diagnostic capabilities. Introductory off-highway software expires when your ESI[truck] heavy duty truck software expires
- ▶ Software renewals can be done simultaneously, ensuring continuous HD truck and off-highway vehicle coverage

3824-080HW

ESI[truck] Off-Highway 1-Year Software License

- ▶ 12-months of off-highway diagnostic coverage, including all coverage updates
- ▶ Used to renew initial software included with Off-highway upgrade cable kit with introductory software license



Ask your tool dealer about adding off-highway vehicle coverage to your ESI[truck]

NEW



NEW



For more information on software updates and off-highway coverage upgrades, visit www.BoschDiagnostics.com/Pro

Off-highway cable upgrade kit and off-highway software only compatible with 3824A, 3824 and 3824BSC ESI[truck] diagnostic tools. Not compatible with 3823 or 3823BSC diagnostic tools. Customer must first purchase Off-highway upgrade cable kit with introductory software (3824CBL-UPG) prior to purchasing or activating Off-highway 1-year software license (3824-080HW)

Bosch HPT 500 High Pressure Leak Tester



1699500000
HPT 500



1699500001
HPK 200 Accessory Kit for HD and Medium Duty Applications

The cost-effective, safe alternative for heavy-duty preventive maintenance and repair

Test heavy-duty exhaust systems safely and efficiently in 15 minutes or less

Troublesome **intake and exhaust leaks** are commonly diagnosed with **outdated and inefficient equipment and methods.**

These methods are time consuming, dirty, and frequently result in replacement of the wrong components. Low pressure testers, soapy water, and supersonic listening devices can cause revenue generating trucks to spend **unnecessary days in the repair facility, out of service.**

Bosch is addressing these problems with a **new, cost-effective, and safe alternative** that will change standard practices for heavy-duty preventive maintenance and repair. The **HPT 500** uses regular compressed air to reach and maintain a variable pressure of 2 to 20 psi throughout the vehicle's intake and exhaust system. Compressed air mixed with a **visual vapor is forced into the system**, simulating the load of a running engine: both naturally aspirated and forced induction (turbo and supercharged). **Many upstream leaks will only appear under these boosted pressures.** The dense, **highly visible vapor** flows throughout the truck's hoses, tubes and related components and **escapes anywhere there is a leak.**

Learn more at boschdiagnostics.com/pro



Saves
43-120 Min.
per vehicle



Average return on investment in just
4.63 Weeks



Decrease
fuel consumption



Decrease
downtime



Decrease
diagnostic time



Increase
safety



Increase
uptime

Bosch BAT 135 Battery tester with integrated printer

Features:

- ▶ Tests 6V, 12V batteries and 12V, 24V charging systems
- ▶ Test battery capacities from 40-2,000 CCA
- ▶ Test all automotive, light-duty and commercial batteries including:
 - AGM
 - Gel Cell
 - Flooded lead-acid
 - Start/Stop EFB
 - Commercial, SLI
- ▶ Presents State of Health and State of Charge percentage
- ▶ Integrated printer to capture test results and customer records
- ▶ Detachable test clamps for service and replacement
- ▶ Full charging system test with diode/ripple test
- ▶ Micro-load testing for proven, accurate results
- ▶ 1-year warranty

1699200244



HDS 250 Heavy-Duty Scan Tool for Class 4-8 Vehicles

Ideal for heavy-duty shops as a second diagnostic tool and mobile repair trucks.

Cost-effective solution for aftermarket shops in need of heavy-duty coverage

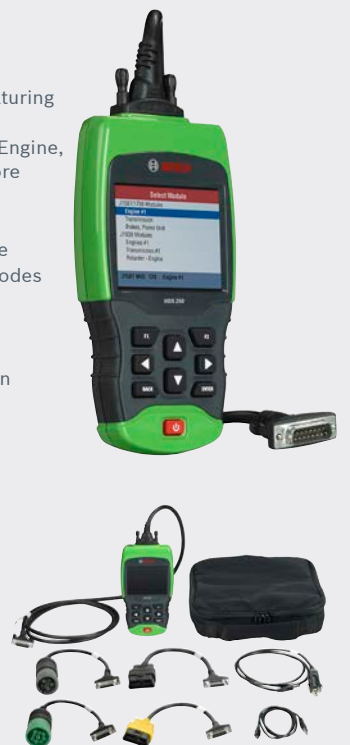
1699200240

HDS 250 Features

- ▶ Brilliant Color Display
- ▶ Rugged enclosure for durability
- ▶ Class 4 – Class 8 truck coverage featuring "Automatic Protocol Search"
- ▶ HD J1587 / J1708 and J1939 CAN, Engine, Transmission/ABS coverage and more
- ▶ Global OBD II Quick Test
- ▶ Works on 12V and 24V systems
- ▶ Gasoline and diesel engine coverage
- ▶ Read and clear diagnostic trouble codes
- ▶ Live vehicle data includes
 - Engine speed
 - Engine ECU temperature
 - Percent acceleration pedal position
 - Engine intercooler temperature
 - Engine coolant temperature
 - Battery voltage
 - Alternator voltage output
 - Ambient air temperature
 - Air inlet temperature
- ▶ On-screen definitions of diagnostic trouble codes

HDS 250 Includes

HD Scan tool, 9 Pin Deutsch Cable, 6 Pin Deutsch Cable, 16 Pin HD/ OBD II Cable, USB Cable, Quick Start Guide, Carrying Case and 1-Year Warranty.





3893 ENCORE

Fastest from code-to-fix

- ▶ OE-level Domestic / Asian / European Coverage
- ▶ 30 million on-tool fixes, maintenance tests and symptom assist
- ▶ Direct link to Identifix® and other repair forums
- ▶ Industry-leading light-duty diesel coverage
- ▶ 7" touch screen

Lifetime hardware warranty*
Engineered and assembled in the USA



3896 EVOLVE

All features of the OTC Encore plus

- ▶ **Full system, full color wiring diagrams for vehicles 1985 and newer**
- ▶ Wireless, J2534 compliant VCI
- ▶ Dual-band Wi-Fi for secure connections to shop WiFi and wireless VCI
- ▶ Front and rear-facing camera
- ▶ 10.4" hi-res touch screen

Lifetime hardware warranty*
Engineered and assembled in the USA

www.OTCtools.com/fix

*Lifetime warranty applies only to tool hardware as long as owner maintains an active diagnostics subscription. Details at otctools.com.

3914 BATTERY & STARTING/CHARGING SYSTEMS TESTER



- Test automotive batteries and create health reports
- Works on 6V and 12V automotive batteries - Regular Flooded, Enhanced Flooded, AGM, EV and Start-Stop.
- 12V/24V charging/starting systems tests
- Test charging and starting system health to diagnose charging issues
- Email test results (Stores 2,000 test records)
- Test batteries with as little as 1.5V
- 3 LED indicators (Blue: Connected, Green: Power, Red: Trouble)
- 20-inch cable with durable clamps
- Works with Encore or Evolve software version 2.10 and newer
 - 2.10 software includes a new battery and system test app
 - Communicates wirelessly to Encore & Evolve via Bluetooth



TRIAGE TOOLS WITH CODECONNECT®

EXPANDED EUROPEAN COVERAGE AND ABS DATASTREAM

Triage scan tools range from simple code readers to advanced diagnostic tools featuring live engine and ABS datastream, CodeConnect® and ABS & Airbag codes and definitions (including European vehicles). All scan tools will work with vehicles 1996 and newer, OBD II and CAN, with optional coverage for pre-1996 vehicles available.



3208

OBD II & ABS Scan Tool



3209

OBD II ABS & Airbag Scan Tool



3210

CodeConnect® with ABS & Airbag



3211

OBD I & II Scan Tool

Product Comparison	3208	3209	3210	3211
OBD II & CAN compatible	•	•	•	•
(All 1996 and newer vehicles)	•	•	•	•
On-screen codes, definitions and emissions status	•	•	•	•
Erases codes and turns off the Check Engine Light	•	•	•	•
Live data and freeze frame data	•	•	•	•
ABS/Airbag (Most 1996-2013 GM, Ford, Chrysler, Honda, Hyundai, Nissan & Toyota)	ABS only	•	•	•
Manufacturer enhanced definitions	•	•	•	•
AutoID™ identifies vehicle being scanned	•	•	•	•
Color screen	•	•	•	•
Graphing live data	•	•	Dual PID	Dual PID
Internet updateable	•	•	•	•
Multilingual menu & code definitions	•	•	•	•
Record and play back data	•	•	•	•
Battery / alternator / charging system monitor	•	•	•	•
OBD II Modes 1-A are supported including Mode 6 data	•	•	•	•
CodeConnect® over 26 million fixes	•	•	•	•
OBD II Ford on-demand tests	•	•	•	•
Oil light & battery reset	•	•	•	•
Expanded European engine, ABS and Airbag trouble code coverage	•	•	•	•
ABS live data and sensor reading	•	•	•	•
Steering and brake service resets	•	•	•	•
OBD I coverage (1984 – 1995 GM & Ford, 1989 – 1995 Chrysler & Toyota)	•	•	•	•



3838

Standalone TPMS tool with Bluetooth OBD II

The OTC 3838 is both a sensor activation and diagnostic device that features a wireless OBD II module for TPMS sensor registration. The tool works with all OEM and aftermarket sensors.

- Exclusive wireless OBD-II module for TPMS sensor registration.
- Standalone TPMS tool with activation, relearn & diagnostic capabilities.
- Three years of software updates included.
- Allows for cloning of universal sensors.
- Key fob signal test and infrared print capabilities.



3415

CAN Test Box Breakout Box for Scan Tools

- Connects to Diagnostic Link Connector (DLC).
- Connect leads for increased diagnosis, analysis, and monitoring.
- LEDs display signal detection – Flashing LED's
- Magnifies DLC
- Displays battery voltage with warning

SUBSCRIPTION SOFTWARE

Domestic, Asian and European Software
1-year subscription kit provides a year of frequent and valuable updates for new coverage, coverage enhancements, repair information, application improvements and includes the Diagnostics for Life® lifetime hardware warranty.

Diagnostics for Life® lifetime hardware warranty means OTC supports your Encore/Evolve for as long as you own it, as long as you update it!

The "hardware warranty" applies to the Encore scan tool tablet only. Accessories, such as cables, adapters, batteries and case remain the 90 Day factory warranty from purchase.

3893-LTW

Encore 1-year subscription and Lifetime hardware warranty



3896-LTW

Evolve 1-year subscription and Lifetime hardware warranty



Evolve update includes full access to full color, full-system wiring diagrams for vehicles 1985 and newer.



3181

130 Amp Heavy-Duty Battery Load Tester

Applying an industry-leading 130 amp load, this ergonomically designed, heavy-duty battery tester provides accurate, reliable test results in just 10 seconds. It includes uniquely designed clamps for a positive grip on top and side post batteries and an extra large, easy-to-read display.

- 130 amp load capacity for accurate results
- 0-16 volt range
- Uniquely-designed clamps for both top and side post batteries
- Extra large display with zero adjust
- Works on both 6V and 12V batteries
- Ergonomic handle design
- Side tabs for on-tool clamp storage
- Back brackets for tool storage on wall or toolbox

3834T

TPR Activation Tool VEHICLE COVERAGE THROUGH 2017

- New lower cost kit for use with Encore, Evolve, Genisys Touch scan tool or as a stand-alone tool.
- Works on vehicle TPMS sensors through 2017.
- Bright graphic display and simple navigation buttons enable vehicle selection for fast activation.
- Automatically adjusts activation output power to eliminate cross activation of near sensors.
- Tool includes a 6 month update subscription from www.tpmsupdates.com



Pry Bar Merchansider

9900A

Persuader Pry Bar Merchansider

- 9900A is a merchandiser specifically designed for the OTC 7168 30 inch Chisel and Alignment "Jimmy Bar".
 - The merchandiser is 52" high, 18" wide and 12" deep.
- 7168 Jimmy Bar features:
- 10 - 30" in length; 7/8" Diameter.
 - Forged from high-strength chrome alloy steel.
 - Designed and heat treated to resist bending and breaking.
 - Made in USA.
 - Lifetime Warranty.

9901A

MAJOR Persuaders Pry Bar Merchansider

- 9901A is a merchandiser specifically designed for the biggest OTC chisel and alignment "Jimmy Bars"
 - The merchandiser is 64" high, 16" wide and 18" deep.
- 7168, 7420 and 7421 Jimmy Bar features:
- 2 - 7168 Jimmy Bars (30" in length, 7/8" Diameter);
 - 2 - 7420 Jimmy Bars (46" length, 7/8" Diameter);
 - 1 - 7421 Jimmy Bar (54" length, 1" Diameter).
 - Forged and Chrome Plated or Painted Alloy Steel.
 - Designed and heat treated to resist bending and breaking
 - Lifetime Warranty.



9900A



9901A



7175

Indexing Pry Bar Set, 3-piece

- Sizes 10", 12" and 15".
- Indexible to 180° for better access.
- 14 locking positions for leverage in multiple applications.
- Knurled handle assures a sure grip.
- Meets or exceeds ANSI specifications for pry bars



7177

Heavy Duty Extendable Indexing Pry Bar

- The prying head is 13/16" wide and can be extended from 34" to 53" using 31 preset positions set in 5/8" increments.
- Extension and indexing adjustments are done with separate oversized pins allowing length and angle adjustments to be made quickly.
- Optimal loading of 1500 lbs. to 2200 lbs. is made possible by the bar's heavy duty 13/16" steel bar and 1-3/8" tubular extension. Knurling has been added at the base of the handle for a strong, secure grip.
- OTC Lifetime Warranty.



Jimmy Bars

We've forged these bars from chrome alloy steel, then heat-treated them to resist bending and breaking.

- 7166 – 5/8" diameter, 18" long.
- 7167 – 3/4" diameter, 24" long.
- 7168 – 7/8" diameter, 30" long.
- 7420 – 7/8" diameter, 46" long.
- 7421 – 1" diameter, 54" long.



Rolling Head Pry Bars

You'll have a lot of leverage using one of these rolling head pry bars. The long, tapered body will also serve as an aligning drift.

- 7162 – Pry bar; 6" long.
- 7163 – Pry bar; 12" long.
- 7164 – Pry bar; 16" long.
- 7165 – Pry bar; 18" long.
- 7179 – 21" Rolling Head Pry Bar

7171

Pry Pac

- Three pry bars in one economical pack. You get 12" and 18" rolling head pry bars and a 24" jimmy bar.
- Heat-treated chrome alloy steel.



7176

4 PC Rolling Head Pry Bar Kit

- Set includes 4 OTC Rolling Head Pry Bars (6", 12", 16" and 21" lengths)
- Upset head design provides optimal leverage
- Tapered end designed for hole alignment
- Proprietary thermal treatment provides superior strength and durability
- Chrome finish resists corrosion
- Comes with free pair of OTC SmartTech Gloves (Large)



8203L

Handled Pry Bars (3 PC)

- Includes 24", 36", and 48" lengths
- Dual durometer handle for great ergonomics
- Striking cap - contacts bar - protecting handle
- Made in USA

8252

2-Piece Handled Pry Bar Set

- 12" and 18" handled pry bar included
- Durable dual durometer handle
- Made in USA., covered by OTC's lifetime warranty



7687A

Pry Bar Head

- Turns any 3/8" drive ratchet or breaker bar into a rolling head pry bar.
- A versatile pry bar with easy storage.



6982PMC

Professional Mechanics Collet

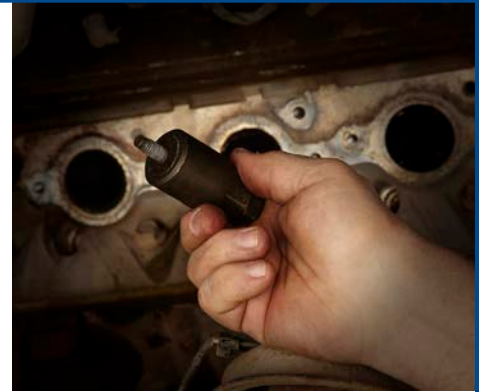
This specialty stud remover is designed to work in very tight spaces, securely grasping broken studs with as little as 1/4" of exposed material. Perfect for exhaust manifold studs - even when frozen or corroded. A variety of locking collets are included for common applications.

- Designed to securely grasp studs with as little as 1/4" exposure
- Compact - gets behind steering and suspension components
- Draws tight - within 1/16" of head surface to greatly reduce tipping
- Includes 4 collet sizes - 6mm, 7mm, 8mm, and 10mm
- Perfect for broken manifold studs
- Lifetime warranty

Kit Contents:

1 Collet Holder and Forcing Screw Assembly
4 Collets (6mm, 7mm, 8mm, 10mm)
Operating instructions

NEW



6982DGS

Drilling Guide System

- Drill perfectly centered holes in broken studs.
- Anchor rail guide on any open hole within reach of broken stud - 6 inch reach.
- 4 bushings for common stud sizes - 6mm, 8mm, 10mm, and 12mm.
- 4 drilling guides for progressive drilling - 1/16", 3/32", 1/8" and 5/32".
- Conveniently stores in vinyl pouch - includes instructions.
- Made in USA with a Lifetime Warranty.



6982DEX

3 Pc Double Edge Screw Extractors

- For unscrewing broken bolts and screws without damaging threads.
- Can be turned in clockwise or counter clockwise direction for right and left handed threads.
- Drive extractor into drill hole for secure fit.
- Hex shank design works with standard hex sockets eliminating rounded corners.
- Industrial Quality - Made from High Strength Steel - Tapered Flute design.

6982DEX-1 Dual Edge Screw Extractor (#10 - 1/4")

6982DEX-2 Dual Edge Screw Extractor (5/16" - 3/8")

6982DEX-3 Dual Edge Screw Extractor (7/16" - 1/2")



6982ACP

Automatic Center Punch

- Accurately marks your drill point every time.
- Creates deep center mark to prevent drill bit from wandering.
- Flared top fits comfortably in palm of hand.
- Allows free hand to place marking tip exactly where you want it.
- Press tool until spring releases causing tip to mark your drilling point.

- 6982DGS-1** 4-Pc Bushing Set
6982DGS-2 4-Pc Guide Set
6982DGS-3 Replacement Rail

Cap Adapters NOT REQUIRED



6792

Transmission Fluid Fill/Extract Kit with Adapters

Designed for undercar transmission fluid service

- 6-liter reservoir can dispense or extract transmission fluid with simple control valve
- Dual safety valves prevent accidental reverse flow
- Includes universal adapter and 14 OE-style adapters
- Press-on quick connect and disconnect fittings make setup faster and easier
- Instructions embedded to inside of storage case help ensure proper and safe operation



6977

Universal Cooling System Pressure Test Kit

A truly universal vehicle cooling system pressure tester kit.

- Fits cooling system hoses from 1/4" to 5/8"
- Fewer adapters can test more systems and test faster
- Hand pump features large gauge and padded base to protect vehicle surfaces from scratching
- 36" hose with quick-coupler adapter securely grips high-quality brass fittings
- Includes radiator cap with quick-connect for older vehicles
- Adapters use Schrader valves to prevent spray when disconnecting
- 1/4", 5/16", 1/2" and 5/8" adapters with Schrader valves
- Blow molded storage case
- Covered by OTC's Lifetime Warranty.



5900A-PLUS

Master Torx Bit Socket Set plus special 24mm External Torx® PLUS Socket

Updated 53-piece Master Torx Bit Socket Set plus special 24mm External Torx PLUS Socket required for Ford Super Duty pick-up beds starting model year 2017. Socket kit includes various sizes of Torx, Torx PLUS, Tamper Resistant Torx, Bit Sockets and External Torx Sockets in 1/4", 3/8" and 1/2" square drive. Convenient hard plastic clamshell case for protection and organization. Not rated for use with impact tools.



5931

External Torx® Plus Socket Set (8-piece)

Set includes one each of the following:

No.	Size	Sq. Drive
5931-6	6EP	3/8"
5931-7	7EP	3/8"
5931-8	8EP	3/8"
5931-10	10EP	3/8"
5931-11	11EP	3/8"
5931-12	12EP	3/8"
5931-14	14EP	3/8"
5931-16	16EP	3/8"



6968

Ratcheting Chain Wrench – 12"

- Works on many different-shaped objects, such as square, round, hexagon, oval, etc.
- Handle is 12" long; chain grips objects ranging from 1/2" to 4-1/2" O.D.

516941 Replacement chain

5942

XZN Super Short Socket Bit Set (8-piece)

Set includes one each of the following:

No.	Size	Sq. Drive
5942-4	SP4	1/4"
5942-5	SP5	1/4"
5942-6	SP6	1/4"
5942-8	SP8	1/4"
5942-10	SP10	3/8"
5942-12	SP12	3/8"
5942-14	SP14	3/8"
5942-16	SP16	3/8"



6969

Ratcheting Chain Wrench – 24"

- Ratcheting action makes it possible to re-grip without removing wrench.
- Handles parts of most any shape... round, square, hexagon, or octagon.
- Handle is 24" long; chain grips objects ranging from 3" to 6-1/2" O.D.

516942 Replacement chain

5933

MortorQ® Super Bit Set (5-piece)

Set includes one each of the following:

No.	Size	Sq. Drive
5933-0	MTS 0	3/8"
5933-1	MTS 1	3/8"
5933-2	MTS 2	3/8"
5933-3	MTS 3	3/8"
5933-4	MTS 4	3/8"



7206

Multipurpose Strap Wrench

You'll find many uses for this heavy-duty strap wrench. The 53" long nylon strap won't mar precision surfaces of shafts, pulleys, or other components. Useful on engine, transmission, and drive pulleys up to 16 inches. Special head design self-tightens the strap as force is applied to the lightweight, 12" long handle.

305085 Replacement strap



7402

Universal Outside Thread Chaser

- Quickly restore threads to near new condition without expensive thread cutting equipment.
- Replaceable V-Pads and dies. Use for 1-1/4" to 5" O.D.
- Includes Standard Die Set 216884.
- Metric size dies available 202817, must be purchased separately.

216884 **Standard die set.** Includes 6 dies, threads per inch - 4, 5, 6, 7, 7-1/2, 8, 9, 10, 11, 11-1/2, 12, 14, 16, 18, 20, and 24.

202817 **Metric die set.** Includes three dies: 1 mm-1.25 mm-1.5 mm-1.75 mm, 2 mm-2.5 mm-3.0 mm-3.5 mm; 4 mm pitch dies.



Adjustable Hook Spanner Wrenches

These pieces will replace many fixed-size wrenches needed to service industrial tractors and other equipment. Their drop-forged jaws adjust to 11 positions for a capacity of 4-3/4" to 12-3/4" O.D.

- Handle is 24" long and 1" in diameter.

7307 Spanner wrench with one 3/8" thick jaw.

7308 Spanner wrench with two interchangeable jaws: one 3/8" thick, one 3/4" thick.



885

Adjustable Hook Spanner Wrench

Here's a tool that's needed wherever turret adjusting nuts or packing gland nuts are used.

- Capacity is 1-1/2" to 4".
- Handle is 24" long, 11/16" diameter.

GM TOOLS



6550

Key Fob Fixture

Used for removal and installation of the key blade pins in GM flip key fobs when replacing the fob and retaining the original key blade. Includes holding tray and drift pin for use with a hammer. Eliminates damage to all parts. Similar to BO-51098.

Applications: 2010 - 2015 GM vehicles including Buick, Cadillac, Chevrolet and GMC



6746

Timing Chain Holding Tool

This holding tool retains the timing chain position relative to the crankshaft position. The tool clamps around the timing chain pins on both the intake and exhaust sides of the cylinder head, allowing the cams to be serviced. Similar to EN-50656.

Applications: 2013-14 Cadillac ATS, 2014 Cadillac CTS, 2013-14 Chevrolet Malibu, 2014 Chevrolet Impala & Buick Regal 2.0L and 2.5L engines.



6708

Injector Retaining Clip Replacer

Removes and installs the injector retaining clips without over-spreading to ensure proper retention of the injector to the rail. Similar to EN-51097.

Applications: 2014-15 Chevrolet Silverado & GMC Sierra V6 and V8 engines, 2015 Chevrolet Suburban/Tahoe, GMC Yukon/XL, 2014 Chevrolet Corvette, 2015 Cadillac Escalade V8 engines.



6706

Injector Rail Assembly Remover

Used for removal of the direct injection fuel rail without damage. The rail assembly must be removed as straight as possible to prevent damaging an injector bore in the cylinder head or the mount assembly. Similar to EN-49248.

Applications: 2007-2014 General Motors Direct Injection Engines including those used in Pontiac, Saturn, Cadillac and Chevrolet vehicles.



6745

Camshaft Actuator Locking Tool

This locking tool engages the slots in the face of the actuator and bolts to the cylinder head and cover to hold the actuator in position to remove or install the actuator bolt. Similar to EN-50793.

Applications: 2013-14 Cadillac ATS, 2014 Cadillac CTS, 2013-14 Chevrolet Malibu, 2014 Chevrolet Impala & Buick Regal 2.0L, 2.5L engines.



6710

Fuel Pump Installation Gauge

Verifies that the camshaft fuel pump lobe is at base circle position before installing the high pressure fuel pump. Tool indicates the pump may be installed when it is flush to manifold surface. Similar to EN-51092.

Applications: 2014-15 Chevrolet Silverado & GMC Sierra V6 and V8 engines, 2015 Chevrolet Suburban/Tahoe, GMC Yukon/XL, 2014 Chevrolet Corvette, 2015 Cadillac Escalade V8 engines



6759

Flywheel Holding Tool

Holds the flywheel in place for servicing the balancer or flywheel bolts. Mounts in place of the starter and engages the flywheel ring gear teeth. Similar to EN-50792.

Applications: 2013-14 Cadillac ATS, 2014 Cadillac CTS, 2013-14 Chevrolet Malibu, 2014 Chevrolet Impala & Buick Regal 2.0L, 2.5L engines.



6744

Tensioner Retaining Pin

Relieves the tension on the timing chain tensioner for camshaft, actuator, and timing chain service. Engages the tensioner arm and moves it forward to disengage the ratchet mechanism. Similar to EN-50837.

Applications: 2013-14 Cadillac ATS, 2014 Cadillac CTS, 2013-14 Chevrolet Malibu, 2014 Chevrolet Impala & Buick Regal 2.0L and 2.5L engines.



6553

Connecting Rod Guides

Set of two connecting rod guides protect the crankshaft bearing surface from damage during piston and connecting rod removal or installation. Guides install onto the connecting rod after the cap is removed and help prevent nicking or scratching. Similar to EN-51454.

Applications: For use on rods with M8 X 1.0 threads.



6758

Front Crank Seal Installer

Installs the front crank seal with the cover on or off the engine. The bolt is threaded into the crankshaft and the nut is tightened to seat the seal. Similar to EN-50820 & EN48034.

Applications: 2013-14 Cadillac ATS, 2014 Cadillac CTS, 2013-14 Chevrolet Malibu, 2014 Chevrolet Impala & Buick Regal 2.0L and 2.5L engines.



6707

Injector Seal Installer Adapters

Two-piece kit includes tools to properly size the seal and install the seals in the proper groove on the injector tip for leak-free operation. Works to install both seals on the injector tip. Similar to EN-51105.

Applications: 2014-15 Chevrolet Silverado & GMC Sierra V6 and V8, 2015 Chevrolet Suburban/Tahoe, GMC Yukon/XL, 2014 Chevrolet Corvette, 2015 Cadillac Escalade.



6712

Axle Seal Protector

Protects seal from being cut or nicked, both of which can cause immediate or eventual leaks. Similar to J-44394-A.

Applications: 2011 and later drive axles on most GM vehicles.



6713

Seal Protector

Protects the transfer case Intermediate Drive Shaft (IDS) seal from the splines of the IDS during shaft removal or installation. Similar to DT-50937.

Applications: 2013-Later Chevrolet Trax, Buick Encore.



6714

Input Shaft Seal Installer

Two-function seal installer. One end installs the input shaft seal into the main housing to the proper depth. The opposing end of the installer installs the side extension housing seal to the proper depth. Similar to DT-50840 and J-8092.

Applications: 2013-Later Chevrolet Trax and Buick Encore.



6715

Torque Converter Seal Installer

Installs torque converter seals without damage in 1990 - 2011 GM 4T60 and 4T60E automatic transmissions found on most GM front wheel drive vehicles. Similar to J-28540-A.

Applications: 1990-2011 GM 4T60 and 4T60E automatic transmissions used on most General Motors front wheel drive vehicles, including from Buick, Chevrolet, Pontiac, Cadillac, Oldsmobile.



6716

Shift Rail Seal Installer

Installs the shift seal on the Tremec TR 3160 manual transmission to the proper depth to ensure optimal seal life. Includes a removable pilot to allow for use both on-vehicle and during unit repair, with the shift shaft in place or removed. Similar to DT-51077.

Applications: 2013 and later Cadillac ATS manual transmission, 2016 and later Chevrolet Camaro, 2016 and later Ford Mustang Shelby GT350



6702

Transmission Adapter Plate Bushing Replacer

Replaces the mount bushing on the transmission adapter plate. Adapter has a window for verifying the bushing position during installation, and is deep enough for bushing removal. Similar to DT-50839 & CH-50342.

Applications: 2013-Later Chevrolet Trax, Buick Encore



5089

Air Brake Line Release Tools

Tools used to separate connectors on the P/S system and EGR coolers without damage. Also works on connectors on other liquid and air lines. Each tool has two sizes. 3/8" and 5/8"; 1/2" and 3/4". Similar to J-45666 & J-42971.

Applications: 2003-later Medium Duty trucks.



6723

Inner Pinion Bearing Race Installer

Installs inner pinion bearing race to desired position on 1998 - 2006 Chevrolet Suburban and Tahoe. Similar to J-45870 & J-8092.



6724

Trans Mainshaft Bearing and Gear Installer

Designed for use on 2014 and later Chevrolet Corvette 7-speed manual transmission. Kit contains tools to install mainshaft cone bearing, mainshaft rear support roller bearing inner race, countershaft rear bearing cone, and 3rd, 4th, 5th, 6th, 7th, and Reverse gears. Includes a tube installer with a supplied threaded rod assembly, a double end threaded adapter, and tube adapters. These tools prevent damage to components and are necessary as the transmission assembly cannot be mounted in a press or hammered into place. Similar to DT-51076 and DT-51076-10.

GM TOOLS



6644

Door Handle Spring Retainer

This tool allows for door handle replacement without having to remove the interior door panel on 2014 and later Cadillac ATS and Escalade, Chevrolet Colorado, Impala, Silverado, Suburban and Tahoe models. The tool installs into the door handle cavity and under the handle return spring to prevent it from unloading. Similar to BO-51363.



6677

Timing Chain Retainer

The tools retain the timing chain and lower sprocket positions while servicing the upper sprockets, camshafts, valve springs, or valve seals on 2011 and later 2.0L and 2.4L Ecotec engines. The tool has two toothed feet that engage the chain and hold it against the guides to retain tension as the tensioner and upper guide bolt are removed. Also used for cylinder head replacement. Similar to EN-48749.



6556

Fuel Sender Lock Ring Wrench

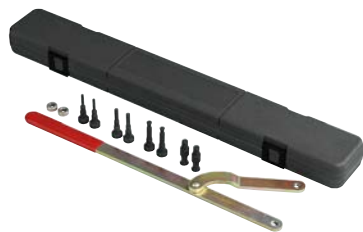
Designed for removing the newly-designed 4-1/2" fuel sender lock ring on 2003 - 2011 Cadillac CTS, SRX and STS models. The lock ring requires high torque to loosen and tighten, requiring a specialized tool for service. Standard 3/8" square center drive hole for balance and maximum force available to remove and tighten. Similar to J-45747.



6743

Pump Seal Installer Set

A set of adapters for 2014 and later GM 6T30, 6T40, 6T45 and 6T50 6-speed transmissions found in Chevrolet and Buick FWD and AWD vehicles. The adapter set protects, installs and sizes the torque converter fluid seal ring into the stator support during unit overhaul. Includes a seal protector, seal installer and a seal sizer to ensure the seal is properly sized and positioned. Similar to DT-51191.



4754

Universal Pulley Holder

- Universal design fits many different size pulleys having slots or holes, such as crankshaft / transmission pulleys or gears.
- Wrench is adjustable from 1-1/2" to 8-5/8"; four different size step pins are interchangeable.
- Long handle enables technician to easily hold the pulley when tightening or loosening retaining bolts.



4769

Wheel Rim Protector Set

Fits over the wheel rim to protect the wheel from being scratched or damaged while using tire spoons.



4795

Safety Wire Twist Pliers

These versatile 8" pliers will reliably twist safety wire rapidly and consistently. The right hand twist mechanism features an automatic spring return. The forged alloy steel construction features tapered jaws for confined areas and mated cutters to cut safety wire. For use on safety wire applications found on vehicles, machinery, and aircraft.

4796

Steering Neck Bearing Race Remover

Simple way to remove bearing race in the steering neck. Remover is inserted into neck and bolt is adjusted to tighten the remover against I.D. of steering neck. The remover is then driven from other end of neck to remove race. Fits 1-1/8" to 2-5/8" I.D. bearing race.



4844

Cam/Crank Locking Tool, Twin Cam & Dyna

- Designed to lock the cam and crank sprockets together for removal, replacement and proper torquing of the sprocket bolts.
- Double end design covers;
- Twin Cam 88/B 1999 and later, Dyna 2006 and later



4738

Chain Breaker and Riveting Tool Kit

This heavy duty kit makes easy work out of breaking, pressing, and riveting # 415 - # 632 size standard and O-ring chains. The handle can be mounted in 3 different positions on the forged and hardened alloy c-frame, providing access while the chain is on the vehicle. The kit can rivet hollow nose master links as well as hardened pins. Storage case included.



4838

Piston Ring Compressor Set, 6 Piece

This 6 ring set covers 2-7/8" thru 4-3/8" piston diameters. The ring compressor pliers feature a ratcheting lock to hold the handles in position for easy piston installation.



4839

Adjustable Piston Ring Expander Pliers

These simple pliers include tips designed to capture the ends of piston rings to hold and expand them securely while installing onto pistons.



4840

Piston Ring Compressor Set with Ring Expander

This complete set includes 12 chrome plated compressor sleeves covering 1-3/8" thru 4-3/8" diameter piston applications. Both the ring compressor and ring expander pliers feature a ratcheting lock to hold the handles in position for easy piston and ring installation. Complete with a metal carry case.



4948

Water Pump Drive and Rotor Puller

- Installs the water pump drive gear on the rotor and removes the rotor from the crankshaft. Works on Polaris RZR XP.
- Similar to Polaris No. PA-49316.



4860

Transmission and Steering Bearing Puller/Installer Kit

- This combination kit works on transmission main-shaft and steering stem bearings on HD motorcycles.
- Removes fork stem bearings on most applications, flywheel bearing 00-03 XL. Removes/installs inner bearing race on trans main shaft Big twin 84 and later.
- Aftermarket trans main-shaft bearings & bushings on 5 & 6 speed LSD and RSD trans.



4888

Flywheel Socket Set

The best flywheel sockets available. These offer a low profile design that provides full nut to socket contact to eliminate rounding off the nut and slippage. Made from heat-treated chrome moly steel.



4991

Clutch Compressor Tool

This universal compressor is used to compress the drive or driven clutch during assembly of disassembly. Innovative design makes use quick and effective without binding. Works on all Polaris and TEAM clutches found on full-sized model ATV, Side x Side, and Snowmobile.



4974

Clutch Puller

- Removes drive clutches on Polaris Side x Side and Snowmobile.
- Snow Applications: 700/800 XCR Fuji 3 cylinder engines 1999-2001, all Domestic twin 2-strokes model year 2000 and newer, FS/FST models 2006 and newer.
- Side x Side Applications: Ranger RZR XP 2011 and newer.
- 3/4-16 thread.

4987

Clutch Spider Nut Socket

- Used to remove and install the drive clutch spider jam nut on 2011 & newer Polaris Ranger RZR XP. Similar to OE P/N PU-50578.
- Similar to Polaris No. PU-50578.



4989

Clutch Spider Tool

- Essential when servicing or re-building Polaris clutch. Fits P85 and P90 clutches found on Polaris ATV, Side x Side, and snowmobiles 1972 to Present.
- Similar to Polaris No. 2870341.



4748

Belt Tension Gauge

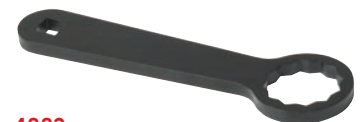
This easy to use and read tool allows for accurate belt tension to be set after belt replacement, adjustment, or wheel service. Use on secondary drive belts with a 10 lb. spec.



4852

Adjustable Primary Locking Bar

- Used to lock primary for service work.
- Will work on Chain or Belt Drive style primary drives.
- Adjustable length from 4" to 7-1/4" to cover virtually any application.



4882

Rear Axle Wrench

- This wrench allows for simple adjustment of drive belt tension or rear wheel alignment.
- Eliminates the need to remove any exhaust components.
- 36mm wrench includes a 1/2" square drive allowing for use with a torque wrench for proper axle torque.



6784

Euro/GM Oil Socket Kit

Popular oil filter wrenches for the GM, BMW, Audi, and VW. High quality, 3/8" drive, forged sockets designed to last a lifetime.

3-piece oil socket kit contains:

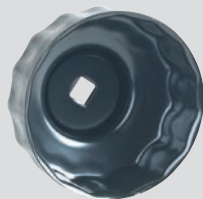
- 27 mm socket for the Cadillac STS 3.2L V6 and the Mercedes-Benz 1.8L I4.
- 32 mm socket for the 2.2L GM Ecotec and Saabs.
- 36 mm for the BMW M52, M60, M62, M70, & M73 engines; M-B OM604, 605, & 606 engines; VW/Audi VR6 engine.



6786

Oil Filter Cartridge Set

- Fits today's oil filter cartridge style filter applications.
- Short socket style allows for proper clearance when removing the filter element.
- 24mm – Cadillac, BMW, • 27mm – Cadillac, Mercedes, Buick, Saturn, Saab, Smart, VW.
- 29mm – Dodge.
- 32mm – Saturn, Saab, various GM.
- 35/36mm – Ford, Mini Cooper, Mercedes, BMW, VW/Audi, Mack Truck.
- 38mm – small Diesel engine applications.



6901

GM Oil Filter Socket

Applications: 1999–2002 Olds Intrigue and 2001–2002 Olds Aurora with 3.5L V6 engine.

- This is a required tool to remove the oil filter cap from the oil pan to access the filter cartridge.



6905

Subaru Oil Filter Socket—66.5 mm, 14 Flutes

- Socket fits between the exhaust manifold and the oil filter for easy removal and installation of the filter.
- Works on 2003–newer Subaru vehicles having the 2.5L 4-cylinder, turbo engine.



6903

Ford / Mazda Oil Filter Socket—75.6 mm, 14 Flutes

- Designed at 75.6 mm to fit 2.3L 4-cylinder engines.
- Works on Ford Fusion, Mercury Milan, Mazda 3, Mazda 5, and Mazda 6.



6906

Toyota Oil Filter Socket—65 mm, 14 Flutes

Avalon

- 2005–'07 V6 3.5L (2GR-FE), 1995–2004 V6 3.0L (1MZ-FE)

Camry

- 2007 V6 3.5L (2GR-FE), 2004–'06 V6 3.3L (3MZ-FE), 1994–2006 V6 3.0L (1MZ-FE)

Camry Solara

- 2004–'07 V6 3.3L (3MZ-FE)

Highlander

- 2004–'07 V6 3.3L (3MZ-FE) — also works on the hybrid version of this engine
- 2001–'03 V6 3.0L (1MZ-FE)

RAV4

- 2006–'07 V6 3.5L (2GR-FE)

Sienna

- 2007 V6 3.5L (2GR-FE)
- 2004–'06 V6 3.3L (3MZ-FE)
- 1998–2003 V6 3.0L (1MZ-FE)



6904

Hyundai and Kia Oil Filter Socket—88.5 mm, 15 Flutes

- Works on newer Hyundai Sonata and Santa Fe 3.3L V6 engines.
- Works on newer Hyundai Azera, Veracruz and Entourage 3.8L V6 engines.
- Works on newer Kia Amanti, Sedona and Sorrento 3.8L V6 engines.



4568

Three-Leg Oil Filter Wrench

- Fits filters ranging from 2-1/2" to 5-1/4" (65 mm to 135 mm) in diameter.
- To turn the tool, use a 1/2" ratchet in the ratchet drive or a 13/16" wrench on the nut.
- Knurled legs provide extra gripping power.



4440

Heavy-Duty 3 Leg Filter Wrench Standard

- Self gripping design for true universal fit from 3" to 4-3/4".
- Heavy duty knurled leg design for extra grip and strength.
- 1/2" square drive with 21 mm hex option.



4441

Heavy-Duty 3 Leg Filter Wrench Large

- Self gripping design for true universal fit from 4" to 6 1/2".
- Heavy duty knurled leg design for extra grip and strength.
- 1/2" square drive.



4560

Small adjustable oil filter pliers

- 13-1/2" long; fits filters ranging from 2-1/4" to 5" (57 mm to 127 mm) in diameter.

4561

Large adjustable oil filter pliers.

- 18" long; fits filters ranging from 3-3/4" to 7" (95 mm to 178 mm) in diameter.



30-Ton King Pin Pusher Set

The Heavy Duty Kingpin and Brake Anchor Pin Pusher utilizes its cylinder and hydraulic force to replace traditional time-consuming torch and hammer methods. It helps get the job done in minutes instead of the better part of a day. Five special collars and two pins allow this unit to work on both straight and tapered kingpins. It accommodates sizes from 7/8" to 2" in diameter and up to 11-1/4" in length. With 30 tons of force, it can push out even the most corroded kingpins. The anchor pin can be removed quickly by using the special adapter installed in the pusher's base block and the unit positioned over the brake's spider. Included are the 4121A-MA hydraulic cylinder and 4012A Two-Speed Hand Pump that make the job easy.

4240A

Complete kingpin and anchor pin pusher set with hydraulics.

4241

King- and anchor-pin pusher with anchor pin adapters without hydraulics.



4295

Wheel Stud Service Kit

- Works on most hubs for installation and removal.
 - All sizes of studs.
- Installation done by pushing on the head, eliminating the need for threaded adapters.
 - Reduces number of adapters required
 - Reduces damage to studs
 - Increases ease of use
- Remove and install 10 studs in half the time - in as little as 10 minutes
- Can be powered with an impact wrench, no hydraulic power source required.
- No need to remove hub from vehicle.
- Reduces risk of damage to hubs, studs, and bearings when using tool.
- Weighs only 12 lbs., assembled to remove studs and 14 lbs., assembled to install studs.



7180

Universal Bearing Cup Installer

This handy, adjustable tool is designed to install wheel-bearing cups in a wide range of heavy-duty axles. Simply adjust and lock the jaws to the cup I.D., slip on the new cup, set it in the bore, and drive it in with a hammer. The tool helps eliminate the damage caused by makeshift methods.

- Works on axles from 11,000 to 50,000 lb. capacity.
- Adjusts to fit 3-5/8" to 6-1/2" O.D. bearing cups, which adds up to as many as 30 individual drivers.



5054

Air Brake Service Kit

This kit has the tools needed to remove slack adjusters and push-rod clevis pins used in the S-cam brake systems of class 7 and 8 vehicles.

- Works on manual or automatic slack adjusters.
- Includes Nos. 5055 and 5056 slack adjuster pullers, 5057 brake clevis pin press, and a plastic storage case.



5080A

Truck Front Leaf Spring, Pin, and Bushing Service Set

- Delivers 10 tons of hydraulic force to remove and install truck front spring eye bushing assemblies quickly and easily.
- Services bushings with diameters from 1-1/4" through 1-7/8", and pin diameters from 7/8" through 1-1/8". Handles all popular OE and aftermarket components, including Horton pin and bushing assemblies.
- Service bushing assemblies, in many cases, without removing leaf spring hangers and spring assemblies from the vehicle.
- All accessories are included except the hydraulic hand pump and hydraulic hose which must be purchased separately.



5038

Brake Anchor Pin and Bushing Service Set

With the No. 5038, there's no need to remove the bearing hub assembly just to replace the pins and bushings on 16-1/2" S-cam trailer and tractor "Q" brake systems.

- Special tooling and our C-frame press get you past the hub assembly, so you can do the job quickly and professionally without damaging other parts.
- Includes everything needed for removal and replacement.



5081

S-Cam Air Brake Spring Tool

- Eliminate makeshift, unsafe methods of unhooking and reconnecting retaining springs when replacing brake shoes on heavy-duty tractors and trailers.
- Simply hook the retaining spring loop and press down. Lever action against the axle makes the job a snap!



5085

Hub Oil Seal Puller

- Eliminates bearing and hub damage that can occur when a punch and hammer is used to remove the seal.
- Extra long 28" handle provides leverage, unique pulling head design quickly and easily removes the seal in one piece.
- Built from the highest quality heat-treated steel.
- Removes hub seals on trailer and truck axles, including truck steering axles.



Davco Diesel Filter Wrenches

- Found on Caterpillar, Cummins, Detroit Diesel, International, Mack, Mercedes-Benz, Volvo and other engines.
- Durable, stainless steel construction.
- Precise, laser-cut angles.
- Opens vent cap also.
- Soft, ergonomic handle.

6914

Fits Davco Diesel filter models, 232-233-234.

6915

Fits Davco Fuel filters 382 & 384.



1770A 1,500 lb. Dual Wheel Dolly

- Hydraulic jack provides almost 5" of lift and tilts wheel assembly 4° to prevent damage to wheel seal.
- Independent lifting rack provides maximum stability; rollers won't catch on load.
- Swivel casters for easy maneuverability.
- Floor space is 45" by 41".
- 6' chain holds load in place.
- Covered by OTC Lifetime Warranty®.



1735B 2,000 lb. Capacity HD Motor-Rotor® Repair Stand

- Handles a wide variety of engines, transmissions, torque converters, and rear axles from trucks, tractors, and construction machinery.
- The 50:1 ratio gearbox allows full rotation of mounted unit with just a turn of the crank and locks in position. Easily maneuvered when loaded.
- To ensure engine stability in all positions, this repair stand is equipped with a positive-crank handle locking mechanism.
- Twin-post design, featuring laterally adjustable, 3 position outboard support; provides an extremely stable work-holding unit.
- Locking rear wheels anchor stand in position.



1725 Engine support bar (3-Point), 700 lb. capacity

- Unique, innovative design featuring...
- Cutting edge, design self-centers load to prevent tipping on inclined surfaces.
- Smooth sliding legs adjust easily to different vehicle widths.
- PVC-coated support legs don't scratch vehicle surfaces.
- "Quick Connect" third-point bar (No.1725) makes setup a snap.
- Spinner handle enables lightning fast adjustment.



5018A Truck Clutch and Flywheel Handler

- Replaces 14" & 15-1/2" clutch assemblies weighing up to 250 lbs.
- 13" low point enables access below side faring.
- Linkage raises load from horizontal to vertical position.
- 360 degree swivel head.
- Covered by OTC Lifetime Warranty®.



5019A 2,200 lb. Capacity Low-Lift Transmission Jack

- Special mounting adapter fits popular Eaton® Fuller® RoadRanger® transmissions used on nearly all Class 7 and 8 heavy-duty trucks. Mounting plate angle is adjusted with the turn of a wrench.
- Swiveling pump handle permits ease of operation in restricted working spaces. Fast-acting pump quickly raises lifting arm.
- Includes No. 540231 adapter for Eaton® Fuller® RoadRanger® transmissions

Specifications:

Min. height is 8-1/4" Max. height is 36-1/2"
Max. forward tilt – 15° Max. backward tilt – 20°
Max. side tilt (either side) – 12°
Overall length – 52" Overall width – 32-1/2"



1726A 1,000 lb. Capacity Engine Stand

- A time saver for passenger car and light truck engine rebuilding or repair.
- Four adjustable attachment arms make engine mounting fast and easy.
- Engine can be rotated a full 360° with a turn of the handle; a locking pin secures the work in any of eight positions.
- Two rear wheels lock tightly to anchor the stand in place.
- Easy one-bolt disassembly for transport of stand.
- Covered by OTC Lifetime Warranty®.

Specifications:

Height to center line – 28", Length – 46"
Width – 35-1/2", Handle length – 24"



2,200 and 4,400 lb. Capacity Heavy-Duty Floor Cranes

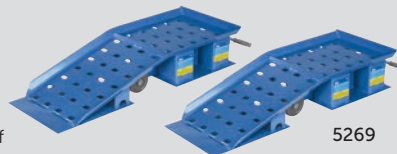
- To conserve valuable floor space, crane folds into a compact package for storage.
- For "close-in" work, leg spread adjusts to clear vehicle's wheels, telescoping boom extension gives additional reach. Roller bearing mounted wheels and steering dolly provide ease of mobility.
- A two-speed hydraulic hand pump provides fast boom travel; descent of boom is under precise control of operator.
- Covered by OTC Lifetime Warranty®.

1819

2,200 lb. Capacity Crane. Has hydraulic hand pump and 16-7/8" lifting chain.

1820

4,400 lb. Capacity Crane. Has hydraulic hand pump and 18-3/8" lifting chain.



20-Ton Truck Ramps

- Long, retractable T-handle enhances mobility.
- Non-skid rubber matting prevents slippage during use.
- Durable, heavy-duty rubber wheels.
- Capacity per pair is 20 tons
- Covered by OTC Lifetime Warranty®.

5268

20-ton truck ramps handle up to 10" tread width.

5269

Wide 20-ton truck ramps handle up to 16" tread width.



10-Ton Air Lift

- Adjustable lifting saddles and an extra wide stance for extra stability.
- 10 tons of lift at 200 PSI air pressure.
- Lifting range is 13" to 52".
- Automatic mechanical safety catch engages in five height positions.



5091 shown mounted on transmission jack (jack not included).

5091

HD Spindle Adapter

- Adapter for low lift transmission jacks that holds the spindle assembly firmly in place during king pin service.
- Eliminates the need to completely disassemble the brakes to reduce spindle weight for handling.
- Spindle assembly can be raised to a comfortable working height while replacing king pin bearings or bushings.
- Patented design will work with standard HD truck bolt patterns and wheel stud sizes.
- Adapts to most low lift transmission jacks.



5130

1,000 lb. Capacity DriveMaster™ Driveline Lift

- Low profile of 7".
- Lift range: 23" to 30".
- Pivoting pump handle +/- 15° tilt in each direction.
- Includes 553516 differential mounting adapter. Mounts easily using existing bolt patterns. Fits the most common differentials currently in use on Category 7 and 8 Heavy Duty Trucks. Including: Eaton, Fuller, Rockwell, Meritor, Spicer, International, and Mack.
- CE certified, PALD compliant.
- Covered by OTC Lifetime Warranty®.

COMBINING SIMPLE OPERATION WITH SUPERIOR ACCURACY

These machines will test, recover and recharge R-134a and R-1234yf automotive A/C system quickly and accurately.

R-134a Systems



R-1234yf Systems



Features	34288NI	34788NI	34788NI-H	34988NI	AC1234-4	AC1234-6
Fully-Automatic Function: Program to recover, vacuum, leak test and charge without operating panel valves.	–	X	X	X	X	X
Automatic Dye Inject: Gives the user the ability to use the machine to inject UV dye into a vehicle's A/C system.	–	–	–	X	–	–
Automatic Oil Drain: A display reminds you to empty the graduated container to show the amount of oil to replace.	X	X	X	X	X	X
Oil Inject: Automatically inject oil back into the vehicle's A/C systems.		X*		X**		
Refrigerant & Oil Database: A/C system capacities for North American market vehicles (Optional – not included with the machine)	Optional	Optional	Optional	Optional	Optional	Optional
A/C System Flush: Flushes a vehicle's A/C system with refrigerant, eliminating any residual oil or other liquid. (Flushing adapters not included)	–	–	X	X	X	X
Save & print before and after service data: Allows the user to store before and after service information by vehicle and print this information to provide to a customer.	–	X	X	X	X	X
Visual & Audible Alarm: Notifies the user when service is complete, or if a problem has occurred.	–	X	X	X	X	X
Vacuum Leak Test: Monitors level after evacuation, informs of possible leak.	–	X	X	X	X	X
Automatic Air Purge: Eliminates system-damaging air without monitoring gauges or opening valves.	X	X	X	X	X	X
Automatic Refrigerant Refill: Maintains a user-selectable amount of refrigerant in an internal vessel and signals when it's time to change supply tank, no monitoring required.	–	X	X	X	X	X
Vacuum Feature: Defaults to 15 mins, programmable up to 99 mins. "Remaining time" is displayed.	X	X	X	X	X	X
Display: Multilingual.	X	X	X	X	X	X
Refrigerant Charging:	X	X***	X***	X***	X***	X***
Refrigerant Management System: Displays refrigerant use and monitors remaining filter life. Prompts appear when 1/3 of filter life remains.	X	X	X	X	X	X
Electric Vehicle: Capable of servicing high voltage electric compressor A/C systems.	–	–	X	–	X	X
Ethernet Network Port / Audio jack	–	–	–	–	–	X
USB 2.0 Port	–	–	–	–	–	X
Replacement Filter part number 34724	X	X	X	X	X	X
Printer	Optional	Optional	Optional	X	Optional	X

* One oil bottle. ** Two oil bottles and one UV dye bottle. *** Charge mode from high or low side, or use both sides.



34888HD Advanced R134A Heavy-Duty Recover, Recycle, Recharge Machine

R-134a machine features a removable tank and liquid pump for large-capacity systems typically found in buses. The included nitrogen port can be used to dry and leak test the A/C system. Fully automatic function recovers, evacuates, leak tests, charges, drains and injects oil without operator interference. Optional printer for capturing and reporting service data.



17800C Multi-refrigerant recover, recycle, recharge machine

Ideal for mass transit vehicles, buses, refrigerated trailers or containers and other applications using multiple refrigerants. Safely recovers, recycles, evacuates and recharges R-12, R-134a, R-22, R-404A, R-407C and other medium- and high-pressure refrigerant blends.

New 2019 A/C system capacity databases



34411-J
134a database
For 34788, 34788-H
& 34988 machines



34412-D
134a database
For 34288NI, 34788NI,
34788NI-H & 34988NI machines



34413-B
1234yf database
For AC1234-4
machines

Vehicle Database Screens R-134a Vehicle A/C Refrigerant Database 2019

- Confirm A/C system charge capacities directly from your Robinair A/C RRR machine for R-134a and R-1234yf systems, sold separately.
- Includes charge amounts and component oil capacities for vehicle model years 1997-2019 using R-134a refrigerant and vehicle model years 2013-2019 using R-1234yf refrigerant.
- Database helps ensure the vehicle system is charged with the correct amount of oil, per factory and OEM specification

34411-J – R-134a Vehicle A/C Refrigerant Database 2019. Compatible with legacy Robinair R-134a machines 34788, 34788-H, 34988.

34412-D – R-134a Vehicle A/C Refrigerant Database 2019. Compatible with new Robinair R-134a machines 34288NI, 34788NI, 34788NI-H, 34988NI.

R-1234yf Vehicle A/C Refrigerant Database 2019

34413-B – R-1234yf Vehicle A/C Refrigerant Database 2019. Compatible with new Robinair AC1234-4 R-1234yf recovery machine.

MUSCLETOOLS

A/C Tools

MADE IN USA* - LEAK DETECTORS FROM ROBINAIR

MEETS SAE J2913 & SAE J2791 ASHRAE 173-2012, EN14624-2012 INDUSTRY STANDARDS

* Made in USA with globally sourced components



LD3

LD5

LD7

LD3

- Loud audible alert
- Automatic calibration

LD3 Features

- Long life, stable sensor
- Automatic calibration and reset to ambient
- 3 adjustable sensitivity levels
- Low battery indicator
- True mechanical pump
- Uses 4 AA alkaline batteries, included
- Rubberized Santoprene handle grip

LD5

- Color display with graphics and visual alerts
- Bar graph mode helps locate leaks faster
- Loud audible alert
- LED inspection lights
- Automatic and manual calibration

LD5 Features

- Unique color graphic LCD display
- Long life, stable sensor
- Automatic calibration and reset to ambient
- User friendly message and error screens
- High-intensity LED inspection light
- 3 adjustable sensitivity levels
- Low battery indicator
- True mechanical pump
- Audio mute function
- Uses 4 AA alkaline batteries, included
- Rubberized Santoprene handle grip

LD7

- Color display with graphics and visual alerts
- Bar and Pinpoint graphing modes help locate leaks faster
- Loud audible alert with mute option
- UV and Clear LED inspection lights
- Automatic and manual calibration

LD7 Features

- Patented 3 LED UV lights with 395-415 nm; wavelength is optimum for A/C dye fluorescence
- Unique color graphic LCD screen
- Long life, stable sensor lasts up to 10 years
- Sweep mode function to pinpoint leak source
- Automatic calibration and reset to ambient
- User friendly message and error screens
- High-intensity LED inspection light
- 3 adjustable sensitivity levels
- Low battery indicator
- True mechanical pump
- Audio mute function
- Uses 4 AA alkaline batteries, included
- Rubberized Santoprene handle grip

41234

R1234yf Aluminum Manifolds and Hose Set

- Easy-to-read 3-1/8" adjustable gauges.
- Durable aluminum manifold block with fittings.
- Improved face seal valves provide a tight seal, less wear and improved flow.
- Easy-to-grip control knobs.

45111

2-Way Brass Manifold R134a Manifold Hose Kit

- 90° manual couplers
- 72" R134a hose set



UV Leak Detection Kit

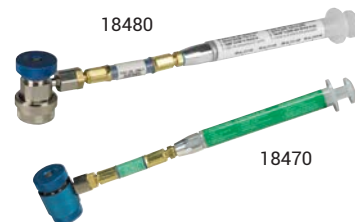


16235

UV Leak Detection Kits

- The easiest and most accurate gun available today.
- No guesswork – a pre-measured application every time.
- One squeeze injects a pre-measured amount (1/8 oz.) of dye. No more adding too much dye.

Syringe-type Injectors



Use these syringe-type injectors to add oil to a fully pressurized A/C system. Fill the barrel with the amount of oil needed, connect the injector, and press the plunger.

- 18480** – R-134A oil injector, PAG labeled
- 18490** – R-134A oil injector, POE labeled
- 18460** – R1234YF oil injector, generic
- 18465** – R1234YF oil injector, PAG labeled
- 18470** – R1234YF oil injector, POE labeled

Not recommended for UV dye injection.

Robinair Vacuum Pumps

VacuMaster® Single Stage Vacuum Pumps

- 15115** 1.5 CFM Vacuum Pump
- 15310** 3 CFM Vacuum Pump
- 15510** 5 CFM Vacuum Pump



VacuMaster® 2-Stage Vacuum Pumps

- 15150** 1.5 CFM Vacuum Pump
- 15300** 3 CFM Vacuum Pump
- 15500** 5 CFM Vacuum Pump



CoolTech® Vacuum Pumps

- 15434** 4 CFM Vacuum Pump
- 15600** 6 CFM Vacuum Pump



Prices limited to supplies on hand. Not responsible for errors in description or pricing. / 19-07 Q2 2019 edition, Printed in U.S.A.