

# MUSCLETOOLS

Electronic Diagnostics | Special Tools | Shop Equipment | A/C Tools

Q3 2019 Edition

OTC

ROBINAIR

actron

BOSCH

## PROMOTIONS

All promotions valid Q3 2019, unless otherwise stated. Some restrictions may apply. For promotion details and to redeem, visit [Boschrebates.com](http://Boschrebates.com). Dated proof of purchase and/or serial number(s) required when registering for rebate. Must redeem within 30 days of promotion end date.

### Free protective dust cover with purchase of a 34988NI or AC1234-6 A/C machine



#### Keep your investment protected

34988NI premium A/C recovery machine is fully automatic and includes automatic oil and dye injection.

- The most efficient A/C machines available, for both recovery and charging accuracy



AC1234-6 was the first commercially available recovery machine to meet the SAE's standards for recovering, recycling and recharging 1234YF systems

- Integrated refrigerant identifier and printer for documenting system service



**\$75 value**

17499  
dust cover

### Free 3914 battery tester when you renew your diagnostic subscription

Extend your hardware warranty, receive up to 6 new software downloads each year and receive a free Bluetooth capable battery/starting/charging system tester.



#### 3893-LTW

Encore 1-year subscription and Lifetime hardware warranty



#### 3896-LTW

Evolve 1-year subscription and Lifetime hardware warranty

**FREE  
3914**



### Free 7503 tie rod/ball joint tool with purchase of 6530 ball joint kit

The ultimate suspension tool combination. Remove & install most ball joints and tie rod ends in less time. Covered by OTC's lifetime warranty. Ball joint tool compatible with all OTC ball joint adapters.



**6530**



**FREE  
7503**

### Free adapter with purchase of 5019A 2,200-lb low-lift transmission jack

Get the most out of your trans jack with the right adapter. Select one of 6 popular adapters designed to handle multiple powertrain components.



5091



540231

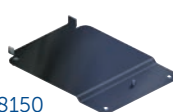


543284



528150

553516



540232



**5019A**

## Diagnose, research, and repair - all-in-one

Now with  
Repair-Source

Engineered and assembled in the USA by Bosch.  
The ADS series is designed by technicians, for technicians,  
to **diagnose, research and repair vehicle issues.**



ADS 325

ADS 625

### Repair-Source

#### Repair-Source

ADS tools now come with Bosch Repair-Source, a comprehensive vehicle service and repair information library.

- ▶ Connect the diagnosis with vital technical information needed for repair – for the specific vehicle make, model and year you are working on.
- ▶ Repair information included with standard subscription
- ▶ Access to vehicle service and repair information including DTC troubleshooting workflows, repair procedures, maintenance schedules, TSBs, OE wiring diagrams, component locations, labor times and more

#### Coverage

Continually updated and enhanced coverage for Domestic, Asian and European brands. Recent software updates included a huge European vehicle coverage release for BMW, Volkswagen, Audi and Mercedes-Benz vehicles, with new coverage also added for GM, Ford, Chrysler and Nissan vehicles.

#### Accessories

Compatible with many wireless borescopes, battery testers, NVH analyzers and more

**Ask your tool dealer about Bosch Diagnostics  
or visit [boschdiagnostics.com](http://boschdiagnostics.com)**

### The tools

#### ADS 325

- ▶ 7" ultra-crisp, high-resolution display
- ▶ 5MP rear camera enables sharing photos and Vehicle Scan Reports
- ▶ Complete diagnostic needs with Auto ID, read/clear DTCs and DTC types from all controllers, data PIDS, bidirectional controls, calibrations, resets and relearns.
- ▶ Android 5.0 plus 64GB SSD for fast processing, printing and file sharing
- ▶ Built-in Wi-Fi and Firefox for full browsing capabilities
- ▶ Lifetime Warranty with an active, unlapsed diagnostics subscription
- ▶ Tablet, AC power adapter and OBD II cable with light and voltmeter

#### ADS 625

All the features of the ADS 325, plus:

- ▶ Industry-leading full color OE system wiring diagrams
- ▶ Wireless VCI and dual WiFi cards for strong web and VCI connection
- ▶ J2534 pass-thru VCI for OE programming capabilities
- ▶ Large 10" ultra-crisp high-resolution display
- ▶ Dual 5MP front and rear cameras
- ▶ HDMI output for extended display
- ▶ Docking and charging station included



## Unbeatable coverage for HD trucks, construction equipment and more



New & Improved  
Windows 10  
Touchscreen  
tablet



### Increase Shop Efficiency with the Bosch ESI[truck]

DPF regeneration, component actuation, special tests and automatic module identification for Class 4-8 trucks and more.

#### 3824A

##### Truck, engine, and system coverage

- ▶ **Truck brands:** Freightliner, International, Kenworth, Mack, Volvo, Peterbilt, Sterling, Western Star, and more
- ▶ **Engine brands:** PACCAR, Perkins, Detroit Diesel-MBE, Mack, Navistar, Caterpillar, Deutz, MTU, and more
- ▶ **System coverage:** transmissions, brake systems, trailer ABS, exhaust treatment, and more

##### Expert-level diagnostics

- ▶ Automatic vehicle ID
- ▶ Fault code reading, reporting, clearing
- ▶ Diesel particulate filter (DPF) regeneration
- ▶ Cylinder cut-out
- ▶ Injector coding and trim files
- ▶ Key component actuations
- ▶ Special tests
- ▶ Vehicle parameter modifications



#### 3824-08R

##### Troubleshooting & Repair Subscription

- ▶ Faster, more efficient heavy duty vehicle repairs
- ▶ 13,000+ procedures guide user through each step to troubleshoot vehicle issues
- ▶ Procedures by DTCs or by vehicle symptoms
- ▶ Technical Service Bulletins (TSBs) included

### ESI[truck] Off-Highway Upgrade Cable Kit with Introductory Software License (3824CBL-UPG)

Add off-highway vehicle and machinery coverage for multiple manufacturers to your 3824 or 3824A ESI[truck] scan tool. Coverage included for:

- Construction equipment
- Agricultural vehicles
- Stationary engines
- Street sweepers and more
- ▶ **Manufacturer coverage:** Caterpillar, John Deere, Kubota, Perkins, Volvo, Massey Ferguson, SISU, Deutz, Deutz-Fahr, MTU, and more
- ▶ **System coverage:** Gearbox, HVAC, engine, steering, hydraulic systems, suspension, electronic modules, antipollution, central computer and more
- ▶ **Diagnostic coverage:** Manual processes, diagnosis info, measurable values, component actuations, ECU data, parameter IDs (PIDs), calibrations and resets, system technical data, wiring diagrams, vehicle technical data and vehicle maintenance info

#### 3824CBL-UPG

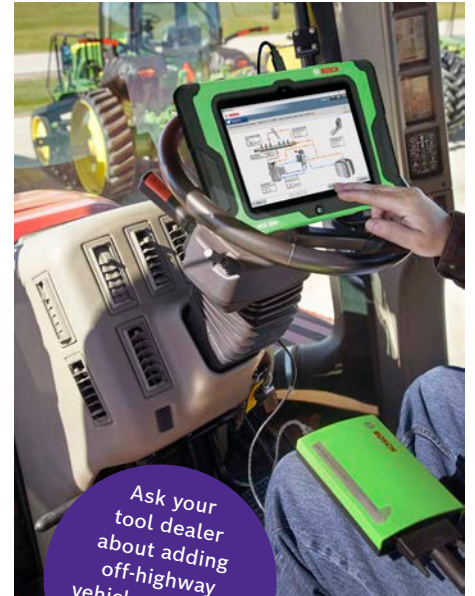
##### Kit contents:

- ▶ 10 cables for machinery, construction equipment, agricultural vehicles and more
- ▶ ESI[truck] off-highway software package with full diagnostic capabilities. Introductory off-highway software expires when your ESI[truck] heavy duty truck software expires
- ▶ Software renewals can be done simultaneously, ensuring continuous HD truck and off-highway vehicle coverage

#### 3824-080HW

##### ESI[truck] Off-Highway 1-Year Software License

- ▶ 12-months of off-highway diagnostic coverage, including all coverage updates
- ▶ Used to renew initial software included with Off-highway upgrade cable kit with introductory software license



Ask your tool dealer about adding off-highway vehicle coverage to your ESI[truck]

NEW



NEW



For more information on software updates and off-highway coverage upgrades, visit [www.BoschDiagnostics.com/Pro](http://www.BoschDiagnostics.com/Pro)

Off-highway cable upgrade kit and off-highway software only compatible with 3824A, 3824 and 3824BSC ESI[truck] diagnostic tools. Not compatible with 3823 or 3823BSC diagnostic tools. Customer must first purchase Off-highway upgrade cable kit with introductory software (3824CBL-UPG) prior to purchasing or activating Off-highway 1-year software license (3824-080HW)

## HDS 250 Heavy-Duty Scan Tool for Class 4-8 Vehicles

Ideal for heavy-duty shops as a second diagnostic tool and mobile repair trucks.

Cost-effective solution for aftermarket shops in need of heavy-duty coverage

1699200240

### HDS 250 Features

- ▶ Brilliant Color Display
- ▶ Rugged enclosure for durability
- ▶ Class 4 – Class 8 truck coverage featuring “Automatic Protocol Search”
- ▶ HD J1587 / J1708 and J1939 CAN, Engine, Transmission/ABS coverage and more
- ▶ Global OBD II Quick Test
- ▶ Works on 12V and 24V systems
- ▶ Gasoline and diesel engine coverage
- ▶ Read and clear diagnostic trouble codes
- ▶ Live vehicle data includes
  - Engine speed
  - Engine ECU temperature
  - Percent acceleration pedal position
  - Engine intercooler temperature
  - Engine coolant temperature
  - Battery voltage
  - Alternator voltage output
  - Ambient air temperature
  - Air inlet temperature
- ▶ On-screen definitions of diagnostic trouble codes

### HDS 250 Includes

HD Scan tool, 9 Pin Deutsch Cable, 6 Pin Deutsch Cable, 16 Pin HD/ OBD II Cable, USB Cable, Quick Start Guide, Carrying Case and 1-Year Warranty.



## Bosch BAT 135 Battery tester with integrated printer

### Features:

- ▶ Tests 6V, 12V batteries and 12V, 24V charging systems
- ▶ Test battery capacities from 40-2,000 CCA
- ▶ Test all automotive, light-duty and commercial batteries including:
  - AGM
  - Gel Cell
  - Flooded lead-acid
  - Start/Stop EFB
  - Commercial, SLI
- ▶ Presents State of Health and State of Charge percentage
- ▶ Integrated printer to capture test results and customer records
- ▶ Detachable test clamps for service and replacement
- ▶ Full charging system test with diode/ripple test
- ▶ Micro-load testing for proven, accurate results
- ▶ 1-year warranty



1699200244

## Bosch HPT 500 High Pressure Leak Tester



1699500000  
HPT 500



1699500001  
HPK 200 Accessory Kit for HD and Medium Duty Applications

The cost-effective, safe alternative for heavy-duty preventive maintenance and repair

Test heavy-duty exhaust systems safely and efficiently in 15 minutes or less

Troublesome **intake and exhaust leaks** are commonly diagnosed with **outdated and inefficient equipment and methods.**

These methods are time consuming, dirty, and frequently result in replacement of the wrong components. Low pressure testers, soapy water, and supersonic listening devices can cause revenue generating trucks to spend **unnecessary days in the repair facility, out of service.**

Bosch is addressing these problems with a **new, cost-effective, and safe alternative** that will change standard practices for heavy-duty preventive maintenance and repair. The **HPT 500** uses regular compressed air to reach and maintain a variable pressure of 2 to 20 psi throughout the vehicle's intake and exhaust system. Compressed air mixed with a **visual vapor is forced into the system**, simulating the load of a running engine: both naturally aspirated and forced induction (turbo and supercharged). **Many upstream leaks will only appear under these boosted pressures.** The dense, **highly visible vapor** flows throughout the truck's hoses, tubes and related components and **escapes anywhere there is a leak.**

Learn more at  
[boschdiagnostics.com/pro](http://boschdiagnostics.com/pro)



Saves

**43-120 Min.**

per vehicle



Average return on investment in just

**4.63 Weeks**



**Decrease**  
fuel consumption



**Decrease**  
downtime



**Decrease**  
diagnostic time



**Increase**  
safety



**Increase**  
uptime



### 3893 ENCORE

#### Fastest from code-to-fix

- ▶ OE-level Domestic / Asian / European Coverage
- ▶ 30 million on-tool fixes, maintenance tests and symptom assist
- ▶ Direct link to Identifix® and other repair forums
- ▶ Industry-leading light-duty diesel coverage
- ▶ 7" touch screen

Lifetime hardware warranty\*  
Engineered and assembled in the USA

### 3896 EVOLVE

#### All features of the OTC Encore plus

- ▶ OE system wiring diagrams, full color wiring diagrams for vehicles 1985 and newer
- ▶ Wireless, J2534 compliant VCI
- ▶ Dual-band Wi-Fi for secure connections to shop Wi-Fi and wireless VCI
- ▶ Android 5.0 with 1Ghz Quad Core Processor
- ▶ Front and rear-facing camera
- ▶ 10.4" hi-res touch screen

Lifetime hardware warranty\*  
Engineered and assembled in the USA

[www.OTCTools.com/fix](http://www.OTCTools.com/fix)

\*Lifetime warranty applies only to tool hardware as long as owner maintains an active diagnostics subscription. Details at [otctools.com](http://otctools.com).

### 3914 BATTERY & STARTING/CHARGING SYSTEMS TESTER



- Test automotive batteries and create health reports
- Works on 6V and 12V automotive batteries - Regular Flooded, Enhanced Flooded, AGM, EV and Start-Stop.
- 12V/24V charging/starting systems tests
- Test charging and starting system health to diagnose charging issues
- Email test results (Stores 2,000 test records)
- Test batteries with as little as 1.5V
- 3 LED indicators (Blue: Connected, Green: Power, Red: Trouble)
- 20-inch cable with durable clamps
- Works with Encore or Evolve software version 2.10 and newer
  - 2.10 software includes a new battery and system test app
  - Communicates wirelessly to Encore & Evolve via Bluetooth

✓ Works with Encore or Evolve software version 2.10 and newer

### SUBSCRIPTION SOFTWARE

Domestic, Asian and European Software 1-year subscription kit provides a year of frequent and valuable updates for new coverage, coverage enhancements, repair information, application improvements and includes the Diagnostics for Life\* lifetime hardware warranty. Diagnostics for Life\* lifetime hardware warranty means OTC supports your Encore/Evolve for as long as you own it, as long as you update it!

The "hardware warranty" applies to the scan tool tablet only. Accessories, such as cables, adapters, batteries and case remain the 90 Day factory warranty from purchase.

#### 3893-LTW

Encore 1-year subscription and Lifetime hardware warranty



#### 3896-LTW

Evolve 1-year subscription and Lifetime hardware warranty



Evolve update includes full access to full color, full-system wiring diagrams for vehicles 1985 and newer.





### 6975 Vacuum/Pressure System Tester

The 6975 Vacuum/Pressure System Tester can immediately diagnose leaks in pressure or vacuum systems. The patented design includes an intuitive rotary dial for quick switching between pressure and vacuum and an ergonomic pistol grip with lever. High-quality hoses with quick-couple fittings make quick work of hose/adaptor changes and are leak-free under pressure or vacuum.

An integrated rear-mounted gauge provides optimal viewing with testing up to 30 PSI pressure and up to 28 in Hg vacuum. It includes hose adapters, rubber adapters and plastic attachments for diagnosing EGR valves, fuel pressure regulators, thermal and electric vacuum switches, turbocharger waste gates, heating and ventilation control valves, central locking systems, MAP sensors and more.

Stored in a convenient blow molded case. Covered by OTC's Lifetime warranty.

#### Includes:

- Quick Dial Diagnostic Pump Tool
- Silicon-like Hoses (3)
- Black Rubber adapters (2)
- Blue Plastic Adapters (8)



### 6976 Cooling System Refilling Gun

The 6976 Cooling System Refilling Gun can eliminate airlocks during cooling system refilling and eliminates the need for system bleeding. Small and large rubber cones suit both passenger and commercial vehicles with no additional adapters needed. Attach the Cooling System Refilling Gun to your shop air supply then insert the nozzle into the cooling system, like the opening on a radiator and establish vacuum. Insert hose into your new coolant reservoir and switch device to vacuum. It will pull air out of the coolant system while new coolant is added.

Avoid wasting time finding a pocket of trapped air that can cause cooling system failures and inaccurate sensor readings. Packaged in a convenient blow molded storage case. Covered by OTC's Lifetime Warranty.

#### Includes:

- Refilling gun with integrated hose assembly
- Rubber adapter "stepped" for 1/2" to 1-1/2" diameter opening
- Rubber adapter "stepped" for 1" to 2" diameter opening
- Blow Molded Storage Case
- Operating Instructions



### 6978 TestVac Vacuum Test Kit

OTC 6978 Test-Vac Vacuum Test Kit allows fast, efficient testing and monitoring of many vacuum operated components and also allows one man brake bleeding. The new kit can help find vacuum leaks, test fuel, engine and exhaust valves, door locks, and heating/cooling system performance. Included in the kit are the vacuum pump, fluid container, transfer cap, hoses and fittings, packaged in a convenient blow molded storage case and covered by OTC's Lifetime Warranty.

#### Includes:

- Vacuum pump with integrated vacuum gauge
- Fluid container with transfer cap
- 2 lengths of vacuum hose
- 12 assorted vacuum hose fittings
- 3 brake bleed fittings
- Instruction Manual
- Blow Molded Storage Case



### 6043 Cooling System Power Flush Gun

Perfectly suited for quick and efficient cooling system flushing. Simply attach it to radiator or heater hoses and you're in business. Also usable in washing engines and even shop floors. Two simple connections: one to shop air and one to a typical water faucet. No. 6043 creates a unique vortex air/water blast for powerful cleaning applications.

Note: While normal water pressure will handle the majority of a cooling system flush, short blasts are sometimes needed to loosen some contaminants from within the system.



### 8104A Vacuum Brake Bleeder

This one man brake bleeding system allows for fast and efficient vacuum brake bleeding. Universal rubber fitting holds securely on brake bleeder screw. Attach shop air and use the quick release trigger for on-demand vacuum and hands free operation. Compact size and 17 oz. (500ml) capacity.



### 8104A-SET Brake Bleeder with Auto Filler Set

This one man brake bleeding system allows for fast and efficient vacuum brake bleeding. The Vacuum Brake Bleeder has a universal rubber fitting that holds securely on brake bleeder screw. Attach shop air and use the quick release trigger for on-demand vacuum and hands free operation.

Compact size and 17 oz. (500ml) capacity.

The Master Cylinder Auto Filler automatically refills the brake fluid reservoir during brake bleeding. Base plate retaining clip and height adjustment allows fit on all reservoir types.

On/Off tap allows installation and storage without drips or spills. 20 oz. (600ml) capacity.

### 6982PMC

#### Professional Mechanics Collet

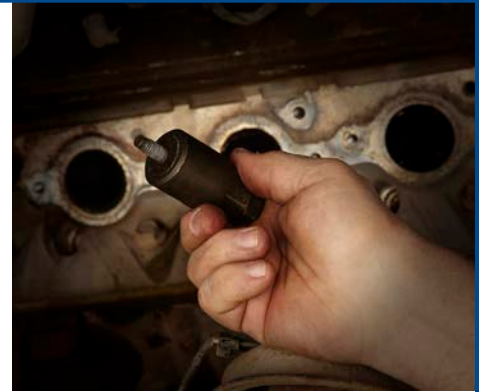
This specialty stud remover is designed to work in very tight spaces, securely grasping broken studs with as little as 1/4" of exposed material. Perfect for exhaust manifold studs - even when frozen or corroded. A variety of locking collets are included for common applications.

- Designed to securely grasp studs with as little as 1/4" exposed
- Compact - gets behind steering and suspension components
- Draws tight - within 1/16" of head surface to greatly reduce tipping
- Includes 4 collet sizes - 6mm, 7mm, 8mm, and 10mm
- Perfect for broken manifold studs
- Lifetime warranty

#### Kit Contents:

1 Collet Holder and Forcing Screw Assembly  
4 Collets (6mm, 7mm, 8mm, 10mm)  
Operating instructions

**NEW**



### 6982DGS

#### Drilling Guide System

- Drill perfectly centered holes in broken studs.
- Anchor rail guide on any open hole within reach of broken stud - 6 inch reach.
- 4 bushings for common stud sizes - 6mm, 8mm, 10mm, and 12mm.
- 4 drilling guides for progressive drilling - 1/16", 3/32", 1/8" and 5/32".
- Conveniently stores in vinyl pouch - includes instructions.
- Made in USA with a Lifetime Warranty.



### 6982DEX

#### 3 Pc Double Edge Screw Extractors

- For unscrewing broken bolts and screws without damaging threads.
- Can be turned in clockwise or counter clockwise direction for right and left handed threads.
- Drive extractor into drill hole for secure fit.
- Hex shank design works with standard hex sockets eliminating rounded corners.
- Industrial Quality - Made from High Strength Steel - Tapered Flute design.

**6982DEX-1** Dual Edge Screw Extractor (#10 - 1/4")

**6982DEX-2** Dual Edge Screw Extractor (5/16" - 3/8")

**6982DEX-3** Dual Edge Screw Extractor (7/16" - 1/2")



### 6982ACP

#### Automatic Center Punch

- Accurately marks your drill point every time.
- Creates deep center mark to prevent drill bit from wandering.
- Flared top fits comfortably in palm of hand.
- Allows free hand to place marking tip exactly where you want it.
- Press tool until spring releases causing tip to mark your drilling point.

**NEW**



### 6792

#### Transmission Fluid Fill/Extract Kit with Adapters

Designed for undercar transmission fluid service

- 6-liter reservoir can dispense or extract transmission fluid with simple control valve
- Dual safety valves prevent accidental reverse flow
- Includes universal adapter and 14 OE-style adapters
- Press-on quick connect and disconnect fittings make setup faster and easier
- Instructions embedded to inside of storage case help ensure proper and safe operation

**Cap Adapters NOT REQUIRED**



**NEW**

### 6977

#### Universal Cooling System Pressure Test Kit

A truly universal vehicle cooling system pressure tester kit.

- Fits cooling system hoses from 1/4" to 5/8"
- Fewer adapters can test more systems and test faster
- Hand pump features large gauge and padded base to protect vehicle surfaces from scratching
- 36" hose with quick-coupler adapter securely grips high-quality brass fittings
- Includes radiator cap with quick-connect for older vehicles
- Adapters use Schrader valves to prevent spray when disconnecting
- 1/4", 5/16", 1/2" and 5/8" adapters with Schrader valves
- Blow molded storage case
- Covered by OTC's Lifetime Warranty.



### OTC Puller kits

5 lb. Hammer in Polished Chrome Finish.



#### 4579 9-Way Slide Hammer Puller Set

- Pulls flange-type rear axles and most front-wheel drive hubs.
- Internal and external jaws provide a variety of combinations to pull bearings, gears and seals.
- Two- and three-way cross blocks and cone provide the perfect jaw configuration for most jobs.
- Set also includes a grip wrench adapter and a dent puller attachment for sheet metal or other unique pulling requirements.
- Designed for use with other OTC 5/8"-18 thread slide hammer attachments.
- Packaged in blow-molded case.



#### 4517 7-Ton Bar-Type Puller/Bearing Separator Set

- Includes a Bearing Splitter with 4" capacity, two sets of hex push puller legs, a 8" bar type puller head mated with a custom thread forcing screw.
- Now service and maintenance professionals have a Puller/Bearing set for tough jobs, up to 7-tons, larger applications, and greater reach 8" to 16".
- As a stand alone puller/bearing splitter set or as a compliment to the 4518 version, the 4517 7-Ton Puller/Bearing Separator Set gives your maintenance/service shop the expanded capability to keep more business in house.



#### 4518 5-Ton Bar-Type Puller/Bearing Separator Set

- This combination set includes our two most popular bearing 'splitters' (2" and 3"), four sets of hex push-puller legs and a bar-type puller head with a 9/16" forcing screw. Separator tools are used with bar puller and legs for a wide variety of pulling jobs.
- The 5" puller cross-bar with a 6-1/4" forcing screw or each of the bearing separators may also be used separately or in combination with other pullers or tools.
- A blow-molded plastic storage case keeps set contents organized and protected from loss.



#### 4532 7-Ton Multi Purpose Bearing & Puller set

- Features a classic "H" style puller block accommodating 7-11" application spread.
- Includes 2 sets of forged jaws for a pulling reach range of 5" to 9" – tempered for heavy-duty applications. (Jaws from OTC's 4534 are interchangeable) Two forcing screws are included for short and long pulls.
- Multi applications include heavy-duty pinion bearings, side bearings, alternators, generators, power steering and crankshaft pulleys, timing gears and harmonic balancers.
- Deep set transmission gears and A/C clutches. Roller gears on tracked vehicles, locking collars on pivot shafts.



#### 4534 OTC Multipurpose Bearing and Pulley Puller Set

- For a wide range of pulling jobs, including: bearings, alternators, generators, power steering and crankshaft pulleys, timing gears, and harmonic balancers.
- Set includes drop-forged components, which can be used in a variety of combinations. Contents of Set: 2 – Forcing Screws (Live Center): 3/4"-16 x 6-11/16" and 3/4"-16 x 5" 2 – Cross-bar Yokes: 3 pin-hole @ 3-1/4" to 5-1/2", 2 pin-hole @ 2-3/8" to 3-3/8" 2 – Clamp Bolts 3 – Pairs of Puller Jaws: 1-3/8" Max, 1-5/8" Max, 1-3/4" Max 1 – Pair of Jaw Pins with Ball Spring 3 – Pairs of Capped Bolts
- Spread: 3" to 5", Reach: 1" to 2-1/4"
- Housed in a blow-molded plastic storage case.



#### 4581 Blind Hole Bearing Puller Set

- For pulling jobs requiring an internal pull.
- Set includes four collets, which fit a wide range of applications. Select the appropriate sized collet by comparing it with the application. Insert the collet, expand it to fit the hole, then attach the slide hammer.
- Four collet sizes: 7/16" to 1/2", 9/16" to 11/16", 5/8" to 1", and 1" to 1-1/4".
- Set includes a 2-1/2 lb. slide hammer with a T-handle.
- Housed in a blow-molded plastic storage case.



#### 4536 A/C Clutch Pulley Puller Set

- For removal of stubborn air conditioning clutch pulleys. Also used on many alternator, generator, power steering, and crankshaft pulleys, harmonic balancers, and fiber timing gears.
- Set includes drop-forged components: one 3/4"-16 x 5" live-center forcing screw, 5-1/2" crossbar with three spread settings, two pairs of jaws, and a clamp bolt.
- Spread: 3" to 5"; Reach: 1" to 5".
- Includes blow-molded plastic case.



#### 4520 Differential Side Bearing Pullers

- Use to remove differential side carrier bearing. Works on a wide variety of cars and light-duty trucks.
- Includes four step plate adapters to fit carrier bearings.
- Reach: 1-5/8". Spread: 2-5/8" to 3-3/8". Forcing screw is 3/4"-16 x 6-11/16" lg.



#### 6627 Grip Wrench Adapters

- For grip wrenches using single-lead thread adjusting screw.
- Adapter threads onto a slide hammer with a 5/8"-18 thread.

205378 Grip wrench threads onto a 7/16"-14 end of adapter for pulling use.

557479 Grip wrench threads onto a 5/16"-18 end of adapter for pulling use.

557480 Grip wrench threads onto a 1/4"-20 end of adapter for pulling use.



#### 6541 Pulling Hook

- This slide hammer puller attachment is used to remove seals, bearings, and other press fit parts.
- Designed to be used with OTC No. 1155 (5 lb.) or No. 1156 (2-1/2 lb.) slide hammer, or other slide hammers having 5/8-18 threads.



5869

NEW

### Fuel System Priming Pump

Pressurizing the fuel system after service is essential for proper fuel system operation and efficient starting. This tank assembly provides pressurized diesel fuel to bleed the air from the system. This allows for immediate proper fuel pressure. Similar to J-47912.



NEW



5869-1

### Fuel System Coupler Fitting

This fuel system coupler fitting connects to a "compu-check" quick-connect fitting. Applications include Detroit Diesel S60, MBE900, and MBE4000. Similar to J-47912-QC.



NEW

5886

### Fuel injector Torque Adapter

This socket adapter is used to remove and install injector feed tubes on select Detroit Diesel engines. The unique design provides proper clearance on injector tube hex nuts and is used to accurately torque tubes upon re-installation. Applications include Detroit Diesel DD13 and DD15. Similar to J-48770.



NEW

5883

### Crankshaft Alignment Tool

This alignment pin tool is used to ensure proper crankshaft alignment while checking camshaft timing and servicing. Pin will drop into crankshaft locating hole, placing the No. 1 cylinder at top-dead-center (TDC). For use on Detroit Diesel Series 60 engines. Similar to J-45947.

5883-1 - Replacement tip.



NEW

5882

### Cam Gear Alignment Tool

This tool is used to properly align the cam gear during camshaft assembly installation. The pin on the tool fits into the cam timing hole for proper alignment. For use on Detroit Diesel Series 60. Similar to J-45946.



NEW

4853

### Piston Ring Compressor

Universal piston ring compressor to compress piston rings during piston installation. Adjustable handle provides an effective size range for rings from 2.125" - 5.0" diameter. For use on most engines. Similar to J-8037.

NEW



5879

### Poppet Disassembly Tool

Disassembly socket for poppet valves with 2-prong spanner style end. Applications include Detroit Diesel engines. Similar to J-36452-B.



NEW

5875

### Cylinder Liner Remover

This puller is used to remove cylinder liners. The metal cylinder body expands out to the cylinder liner when the expander nut is tightened. The liner is then pulled when the bridge nut is tightened. Both the expander and bridge nuts include a thrust bearing for friction free operation. A convenient handle can then be used to lift the liner from the cylinder block and also provides a convenient way to transport the liner. Fits cylinder I.D. ranges from 5.0" to 5.75". Applications include Detroit Diesel Series 60 12.7L with EGR, 14L with EGR and MTU S2000. Similar to J-45876.

NEW

5872

### Compression Gauge

Designed to measure compression within heavy duty engines. Hose has push button release valve, and hose end has a quick coupler for connection to compression adapters. Includes M style quick coupler fittings and 45 degree adapter. Dual gauge range; 0-1150 psi and 0-8000 kPa. Hose length; 12 in. Applications include Detroit Diesel Series 60 and two cycle 53, 71, 92, and 149. Similar to J-6692-B.



## DETROIT DIESEL TOOLS



5877

NEW

### Injector Cup R/I Tool

This two tool set of injector cup removal/installation tools work on screw-in stainless steel cups. Tools compatible with cups; 240-1039 23538840, 240-1035 23533148, 240-1045 23534745 23538829. Applications include Detroit Diesel Series 60. Similar to J-46904 and J-48824.

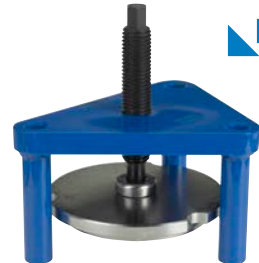


NEW

5884

### Cam Gear Retaining Tool

This tool is used to properly hold the cam gear stationary while removing/installing the cam gear retaining bolt without damage. The tool installs into the gear case, engaging one of the lightening holes in the camshaft drive gear. Use two of the access cover bolts to secure the tool to the gear case. For use on Detroit Diesel Series 60. Similar to J-35652-B.



NEW

5874

### Cylinder Liner Installer

This tool is designed to install cylinder liners into engine block. Attaches to engine with three cylinder head bolts, the drive screw and plate then force the liner into position. For use on Detroit Diesel Series 60. Similar to J-35597-A.



NEW

5876

### Injector Remover

A specially designed puller to remove seated injectors from the cylinder heads of Detroit Diesel Series 60 inline 6 engines. A thrust bearing under the puller nut reduces friction during operation for smooth, easy injector removal. Similar to J-47372.

7378



7377



7379



7375



### Accutorg™ Klikker Torque Wrenches

These precision torque wrenches make a loud click when you've reached the torque setting. They feature ratcheting heads, all-metal construction, permanently roll-marked scales, and knurled handle that enables you to firmly grasp the wrench for right- or left-hand torquing.

- Accuracy; +/- 3% CW, +/- 5% CCW.
- Includes molded plastic case.
- One-year warranty.

Tool No.	Torque Range	Graduations	Square Drive	Length
<b>7375</b>	100-1000 in.-lb (11-113 N•m)	10 in.-lb	3/8"	15-1/8"
<b>7377</b>	10-150 ft.-lb (14-203 N•m)	2 ft.-lb	1/2"	17-3/4"
<b>7378</b>	25-250 ft.-lb (34-339 N•m)	2 ft.-lb	1/2"	19-3/8"
<b>7379</b>	100-600 ft.-lb (136-813 N•m)	10 ft.-lb	3/4"	42-1/4"

7367

### Torque Multiplier, 1100 ft-lb

- Drive Input; 1/2", 365 lb-ft Max
- Drive Output; 3/4", 1100 lb-ft Max
- Head Width; 2.9", 3.3:1 Ratio
- Reaction Bar; 13-3/4"
- Includes reaction foot.
- Note; frictional gear loss = 6%

7368

### Torque Multiplier, 2200 lb-ft

- Drive Input; 3/4", 730 lb-ft Max
- Drive Output; 1", 2200 lb-ft Max
- Head Width; 3.6", 3.3:1 Ratio
- Reaction Bar; 15-5/8"
- Includes reaction foot.
- Note; frictional gear loss = 6%

4554

### Torque Angle Gauge

- Required when servicing many late model engines that use torque-to-yield fasteners. Measures angle of rotation after pre-torque in torque-angle applications.
- The 360° scale is marked in 2° increments and intervals of 10° and 30°; easily zeroed for next application by turning the tool housing.
- Has 1/2" male and female square drives.

**NEW**

7380-E150

### Digital Torque Wrench

- Displays torque in real time and at peak when torque is released.
- Torque value accuracy is  $\pm 1\%$  clockwise (CW) and counterclockwise (CCW) from 10%-100% of full scale.
- Can be used to measure bearing preload torque values.
- Display starts at 1% to 250% of full scale; has a 5-digit, alpha-numeric LCD, and indicator icons for functions, units and battery.
- Indicators include green, yellow and red LED light, an audible buzzer, and vibration.
- 1/4" Drive, 36 tooth ratchet head.
- Range 1.5 - 150 In Lb.

5776

### Preset Torque Wrench Set

These color coded click torque wrenches are pre-set to the most common lug nut torque settings, making them perfect for tire shops. Highly durable design can hold up to the toughest tire shop demands.

- No need for adjustments
- Durable satin finish
- 1/2" Drive, 36 tooth
- Quick release ratchet head
- Perfect for Wheel / Tire shop
- Accuracy better than  $\pm 3\%$  CW

**Sold Individually:**

**5776-1** Preset Torque Wrench, 1/2" 65 lb-ft

**5776-2** Preset Torque Wrench, 1/2" 80 lb-ft

**5776-3** Preset Torque Wrench, 1/2" 100 lb-ft

**5776-4** Preset Torque Wrench, 1/2" 120 lb-ft

**5776-5** Preset Torque Wrench, 1/2" 140 lb-ft



**6295**

### Front End Service Set

Kit includes five popular tools used for servicing Pitman arms, ball joints, and tie rods on most vehicles. Set includes:

7314A – Pitman arm puller.

7315A – Tie rod end remover.

7503 – Outer tie rod remover/ball joint separator.

6296 – Pitman arm/tie rod end puller.

6297 – Ball joint separator.



**7314A**

### Pitman Arm Puller

This puller will handle nearly any Pitman arm job on passenger cars and light trucks. It features special forged jaws shaped to fit the job, ensuring a positive grip every time. Spread between jaw tips: 1-5/16".



**7315A**

### Tie Rod End Remover

Redesigned to use on imports and many front wheel drive vehicles, including SUVs with rack and pinion steering. Live center tip on forcing screw swivels to align tool to tie rod stud to ease in removal and prevent damage to stud.

Similar to Ford 211-001 (TOOL-3290-D)

**6496**

### Pitman Arm Puller

**Cuts Removal Time from 3 1/2 Hours to 40 Minutes**

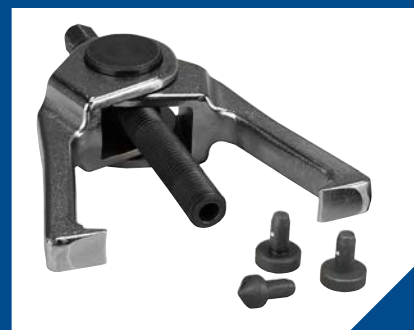
- Labor intensive removal of steering sector not necessary.
- Compact design allows easy access to the Pitman arm.
- Works on most domestic SUVs and pickups.
- Live center on forcing screw and use of a standard wrench results in less effort required.
- Tool is forged steel for durability and long life.



**7503HD**

### Heavy Duty Tie Rod and Ball Joint Remover

A universal heavy-duty puller that removes a wide range of tie rods and ball joints from a variety of cars, trucks, SUVs and heavy-duty vehicles. The 7503HD has a 10-ton pulling capacity, twice the force applied by the original 7503. Jaw spread and reach are increased to 3 and 4 inches for a wider variety of applications and larger vehicles. A heavier duty forcing screw is used, measuring 3/4" - 10, 6 1/2" long with interchangeable tips including cone, flat and cup for multiple applications. The tool will also remove pitman arms and can be used in many pulling situations that require a 2 jaw puller on other vehicles types and machinery.



**7503**

### Outer Tie Rod Remover/Ball Joint Separator

This tool is a must when you're servicing outer tie rods and ball joints. It works on imported and domestic models, front or rear wheel drive, cast or stamped-steel steering knuckles.

- Handles up to 5 tons of force.
- Jaws spread to 3" and has a 4" reach.
- Jaws, once tightened, won't slip on the knuckle.



**6296**

### Pitman Arm/Tie Rod End Puller

The versatile design allows this tool to be used as a Pitman arm remover for many small, domestic rear wheel drive vehicles, or as a tie rod end puller for many domestic and import vehicles. The jaws, with a spread of 1", give a positive grip in tight work places.



**6297**

### Ball Joint Separator

This tool is used to separate the ball joint from the spindle support arm. It works on many domestic and import front wheel drive vehicles, and is adjustable up to 2" for different size ball joints.



**6497**

### Super-Duty Pitman Arm Puller

- Works on 2005 and newer Ford F-250 and F-350 four-wheel-drive Super Duty trucks.
- Allows the Pitman arm to be removed from the steering gear while the steering gear is still in the vehicle.
- Two clamp bolts lock the jaws on the Pitman arm, ensuring a solid grip.
- Maximum jaw spread is 3-1/4".



7311A Similar to Ford No.211-003 (T64P-3590-F)

### Pitman Arm Pullers

These pullers are designed for the toughest Pitman arm jobs. They're adjustable and have rugged forged jaws shaped to fit the job. Two clamp bolts lock the jaws on the Pitman arm, ensuring a solid grip. Puller No. 7310A includes an adapter for added versatility. Both pullers cover a variety of pulling jobs.

**7310A**

Pitman arm puller for medium- and heavy-duty trucks. Max jaw spread: 2-1/4".

**7311A**

Pitman arm puller for cars and light trucks to 3/4 ton. Max jaw spread: 2-1/8".

### Works on the following four-wheel-drive vehicles

1998 – 2003	Ford Navigator
1997 – 2004	Ford F-150 and Expedition
1991 – 2004	Oldsmobile Bravada
1992 – 2011	Chevy Suburban
1988 – 2005	S-10 / S-15 GMC Trucks & Chevy Blazers
1988 – 2011	GMC & Chevy 1/2, 3/4, & 1 ton pickups
1995 – 2011	Chevy Tahoe and GMC Yukon/Denali



# STRUT TAMER II EXTREME

### THE 6637 STRUT TAMER II EXTREME SETS A NEW STANDARD IN STRENGTH AND SAFETY FOR STRUT SPRING COMPRESSORS.

- New forged locking jaws includes larger pads and offset to clamp onto and compress springs even tighter than before.
- New extra thick 5/8" compression arms for superior strength, stability and safety.
- New locking trunions for optimal stability during spring compression.
- New Lock rings to hold arms in position - standard. This eliminates arms from spreading or sliding when compressing offset or unique strut configurations. No tools needed to adjust.
- New Spring capacity of 2-1/2" - 10" diameter, 1-1/4" - 24" vertical stroke.
- Extreme duty design to handle the heavier springs found on mid- and some full-size truck strut assemblies.



Locking trunions increase stability during spring compression

Extra-thick 5/8" compression arms for strength, stability and safety

Stand with wheels for portability (OTC6637-ST only)

During compression, the wheels lift off the floor, and four no-slip rubber pads keep the stand firmly in place

2:1 reduction gearbox - standard. Allows for a 2:1 torque compression increase when compressing struts.

New forged locking jaws include larger pads to clamp and compress springs tighter

Spring capacity of 2-1/2" - 10" diameter, 1-1/4" - 24" vertical stroke

New arm-locking rings hold strong without needing tools to adjust

✓ MEETS THE NEW ASME PASE SAFETY STANDARDS FOR SPRING COMPRESSION  
✓ CAPABLE OF SAFELY COMPRESSING THE LARGEST STRUT SPRINGS



Strut assembly not included

**6637-ST**  
**StrutTamer II Extreme**  
with stand Height 54" (1372 mm)  
(36" without handle)  
Width 22-1/2" (572 mm)  
Depth 32" (813 mm)



**6637**  
**StrutTamer II Extreme**  
Height 29" (736 mm)  
Width 21" (533 mm)  
Depth 20" (508 mm)



**6582**  
**StrutTamer Stand**  
Height 44" (1118 mm)  
Width 22-1/2" (572 mm)  
Depth 32" (813 mm)

Note: 6637-ST, 6637 can be shipped UPS.



**6591-1**  
Upper Arm Clamps



**6587**  
**2:1 Reduction Gearbox**  
• Allows a 2:1 torque compression increase when compressing struts. Fits on StrutTamer™ Extreme or StrutTamer™ HD.

### 6494 Clamshell Strut Spring Compressor

- Servicing MacPherson struts is convenient and affordable with this compressor. It fits a wide range of struts and requires no special adapter shoes.
- Locking pins hold the compressor jaws in place.
  - Tool compresses springs of 4 in. to 9 in. O.D., with diameters of 7/16" to 11/16".
  - Built to use with an impact wrench.



### 6583 StrutTamer™ Compressor Bridge Accessory

- Used to compress strut springs if technician prefers to press on the top plate of the strut rather than attaching the locking jaws to the top coils of the spring.
- Attaches to the locking jaws and is manually adjusted to bridge the strut top plate to be compressed. Lower part of spring is still held in the two lower locking jaws.





Head adjustable to 19-1/2" x 18".

**1728**

### Air-Assisted 1,000 lb. Capacity High-Lift Transmission Jack

- Unique foot pedal design gives you complete control over the air-driven first stage to rapidly raise the mounting head to the transmission; second stage is hydraulically actuated — permitting precise operator control during removal and installation.
- Transmission mounting head features four ratcheting brackets that adjust to fit a wide range of transmissions. Four-wheel base with locking swivel casters provides stability and portability.
- Safety bypass prevents damage caused by a system overload.
- Carries OTC Lifetime Warranty®.

#### Specifications:

Min. height is 34-1/2" Max. height is 72"  
 Max. forward tilt – 40° Max. backward tilt – 20°  
 Max. side tilt (either side) – 10°  
 Leg width – 41" Air pressure (psi) 90 to 160



**1793A**

### 1,000 lb. Capacity High-Lift Transmission Jack

- Universal saddle tilts front to back and side to side; features adjustable corner brackets and safety chain for optimum positioning of the load.
- Flash-chromed Rams inhibit rust from entering the hydraulic system.
- Foot-operated pump and lowering pedal for ease of control when positioning or removing a transmission.
- Wide leg base with 4" polyurethane swivel wheels that provide stability and easy maneuvering. (Brakes on two of the wheels.)
- Safety overload system to prevent jack from being used beyond its rated capacity.

#### Specifications:

Min. height is 35" Max. height is 71-5/8"  
 Max. forward tilt – 24° Max. backward tilt – 19°  
 Max. side tilt (either side) ± 20°  
 Leg width – 37-1/8"



Folding foot pedal.

**5237**

### 1,000 lb. Capacity High-Lift Transmission Jack

- Universal mounting head provides wide fore and aft tilt range.
- Two-stage hydraulic cylinder design.
- Innovative folding foot pedal and release provides precise ease of control when positioning or removing a transmission.
- Significantly reduces force required to lift extremely heavy transmissions.
- Upgraded ergonomic handles for adjustment.
- ANSI/PALD compliant.

#### Specifications:

Min. height is 34-1/2" Max. height is 75"  
 Max. forward tilt – 50° Max. backward tilt – 20°  
 Max. side tilt (either side) – 10°  
 Leg width – 41"



**1794A**

### Air-Assisted 1,000 lb. Capacity High-Lift Transmission Jack

- Air-assist primary stage for rapidly raising the mounting head, activated by depressing foot pedal.
- Hydraulic secondary stage for precise operator control, activated by a hand pump to raise the load, and a release knob to lower the load.
- Big, easy-to-grip knobs that make mounting head adjustments simple, and a safety chain for securing the load.
- Wide leg base with 4" polyurethane swivel wheels that provide stability and easy maneuvering. (Brakes on two of the wheels.)
- Safety overload system to prevent jack from being used beyond its rated capacity.

#### Specifications:

Min. height is 37-5/8" Max. height is 76-1/2"  
 Max. forward tilt – 42° Max. backward tilt – 46°  
 Max. side tilt (either side) ± 12°  
 Leg width – 37-1/8"



**1870**

### Universal Transmission Adapter

Universal transmission adapter with independently adjustable and indexing locking arms that adapt to nearly any transmission shape. The adjustable mounting arms will fit most high-lift transmission jacks. Maximum capacity of 400 lbs. Meets or exceeds current ASME PASE standards for portable automotive service equipment.



**223196**

### Transmission Jack Mounting Adapter Set

- Used with No. 1728 transmission jack. Ideal for use on larger standard transmissions with irregularly shaped oil pans.
- Four adjustable arms help stabilize transmissions that have rounded bottom surfaces.



**1758**

### Fuel Tank Handler

- Provides safe and efficient handling of fuel tanks. Adjustable from 24" to 38" horizontally, and 7" to 11" vertically, to service tanks up to 40 gallons.
- Universal adapter plate fits all OTC and virtually all competitive transmission jacks and power train lifts in the market.
- Gearing mechanism ensures equal extension of lift arms to ensure load is properly balanced over jack.
- Four adjustable support risers can be individually adjusted to ensure a perfect fit to any fuel tank design.
- Cross-link polyethylene foam pads protect tank from damage.

Shown mounted on an OTC high-lift jack.





1513B - 4-Ton



1515B - 10-Ton

### Collision Repair Sets, Stinger Series 4- and 10-Ton

- Very competitively priced, yet high quality sets include single-speed hydraulic hand pump, hose, and ram.
- Components snap together for quick setups to apply pushing, spreading.
- Components include: hydraulic pump, hose, and ram; ram flat base; extension tubes (4); 1/2-ton spreader; tube coupling; ram toe; wedge head; serrated saddle; flex head; plunger toe; 90° wedge head; storage case. The case for the 10-ton set has wheels for mobility.

**1513B** 4-ton collision repair set. Has single speed hydraulic hand pump and ram with 4" stroke.

**1515B** 10-ton collision repair set. Has single speed hydraulic hand pump and ram with 6" stroke.

## FLOW METERS



**4277**

### 50 gpm Mechanical Hydraulic Flow Meter

- Flow Accuracy to +/- 4% of full scale
- Measures flow from 4 to 54 gpm
- Pressure up to 6000 psi
- Fluid filled analog gage that dampens vibration
- Temperatures up to 230 deg F
- Reads flow in one direction
- No batteries required
- Port is 1-5/16" - 12 UN JIC Male
- 12.25" x 4.125" x 4.875"
- 14.5 lbs

**4278**

### 100 gpm Digital Hydraulic Flow Meter

- Flow Accuracy to +/- 1% of indicated value
- Measures flow from 2.5 to 100 gpm
- Pressure up to 6000 psi
- Digital display for flow, temperature, analog for pressure
- Temperatures up to 250 deg F
- Reads flow in both directions, pressure on the high side of valve
- Requires 1.9V battery (included)
- Port is 1-5/16" - 12UN #16 SAE ORB
- 9.45" x 7.87" x 7.87"
- 14 lbs



## OTC Single Acting Cylinder Rams



		Cap. in Tons	Stroke	Height Collapsed	Height Extended	Oil Cap. (cu. in.)
<b>4100A</b>	5-Ton Single Acting Ram	5	3"	5-11/16"	8-11/16"	3.23
<b>4101A</b>	5-Ton Single Acting Ram	5	5-1/4"	10-7/16"	15-11/16"	5.74
<b>4103A</b>	10-Ton Single Acting Ram	10	2-1/8"	5-9/16"	7-11/16"	4.8
<b>4104A</b>	10-Ton Single Acting Ram	10	6-1/8"	11-1/2"	17-5/8"	13.9
<b>4105A</b>	10-Ton Single Acting Ram	10	10-1/8"	15-1/2"	25-5/8"	22.75
<b>4106A</b>	25-Ton Single Acting Ram	25	6-1/4"	13-3/8"	19-5/8"	32.2
<b>4107A</b>	25-Ton Single Acting Ram	25	14-1/4"	21-3/8"	35-5/8"	73.5
<b>4108A</b>	5-Ton LP Single Acting Ram	5	9/16"	1-5/8"	2-3/16"	.62
<b>4110A</b>	55-Ton Single Acting Ram	55	6-1/4"	11"	17-5/16"	69



**4012A**

### 2-Speed Hydraulic Hand Pump

This 2-speed pump is ideal for single-acting rams. Developing up to 10,000 psi operating pressure, the pump operates horizontally or vertically in the "head down" position. Fingertip control provides instant release or pumping action. Has a built-in safety overload valve. Ideal for use with OTC single-acting rams, or similar competitors' rams.

Specifications	4012A
Max. operating pressure	10,000 psi
Volume per stroke Stage 1	.79 cu. in.
Volume per stroke Stage 2	.16 cu. in.
Reservoir capacity	43 cu. in.
Oil port	3/8" NPT



### COMBINING SIMPLE OPERATION WITH SUPERIOR ACCURACY

These machines will test, recover and recharge R-134a and R-1234yf automotive A/C system quickly and accurately.

#### R-134a Systems



#### R-1234yf Systems



Features	34288NI	34788NI	34788NI-H	34988NI	AC1234-4	AC1234-6
Fully Automatic Function: Program to recover, vacuum, leak test and charge without operating panel valves.	Manual Valves	X	X	X	X	X
Automatic fluid drain/inject	Oil drain	Oil drain/inject*	Oil drain	Oil drain/inject, dye inject**	Oil drain	Oil drain
Refrigerant & Oil Database: A/C system capacities for North American market vehicles (Optional – not included with the machine)	Optional	Optional	Optional	Optional	Optional	Optional
A/C System Flush: Flushes a vehicle's A/C system with refrigerant, eliminating any residual oil or other liquid. (Flushing adapters not included)	–	–	X	X	X	X
Save & print before and after service data: Allows the user to store before and after service information by vehicle and print this information to provide to a customer.	–	X	X	X	X	X
Visual & Audible Alarm: Notifies the user when service is complete, or if a problem has occurred.	–	X	X	X	X	X
Vacuum Leak Test: Monitors level after evacuation, informs of possible leak.	–	X	X	X	X	X
Automatic Air Purge: Eliminates system-damaging air without monitoring gauges or opening valves.	X	X	X	X	X	X
Automatic Refrigerant Refill: Maintains a user-selectable amount of refrigerant in an internal vessel and signals when it's time to change supply tank.	–	X	X	X	X	X
Vacuum Feature: Defaults to 15 mins, programmable up to 99 mins. "Remaining time" is displayed.	X	X	X	X	X	X
Display: Multilingual.	X	X	X	X	X	X
Refrigerant Charging:	X	X***	X***	X***	X***	X***
Refrigerant Management System: Displays refrigerant use and monitors remaining filter life. Prompts appear when 1/3 of filter life remains.	X	X	X	X	X	X
Electric Vehicle: Capable of servicing high voltage electric compressor A/C systems.	–	–	X	–	X	X
USB2.0 port & Ethernet Network port/audio jack	–	–	–	–	–	X
Replacement Filter part number 34724	X	X	X	X	X	X
Printer	Optional	Optional	Optional	X	Optional	X

\* One oil bottle. \*\* Two oil bottles and one UV dye bottle. \*\*\* Charge mode from high or low side, or use both sides.



NEW

16995

#### R-ID Plus Refrigerant Analyzer

- Works with both R134A and the newer R-1234yf refrigerant
- Quickly analyzes refrigerant in a vehicle's A/C system to determine if it is good or bad, a requirement of R-1234yf service
- Certified to the SAE J2912 standard and capable of connecting directly to any SAE J2843 or J3030 AC service machine with an external USB port and not equipped with a refrigerant analyzer
- Large, easy to read color display shows results quickly and accurately, helping technicians decide their next step
- Includes internal printer to print final test results

16990 – R-ID Refrigerant Analyzer Same as 16995 without printer.



NEW

LD9

#### LD9-TGKIT

#### H2 Tracer Gas Leak Detector Service Kit

- Color display with graphics and visual alerts
- Bar and Pinpoint graphing modes help locate leaks faster
- Loud audible alert with mute option
- UV and Clear LED inspection lights
- Automatic and Manual calibration
- Battery powered (Uses 4 standard AA batteries - included)
- Compatible with most Hydrogen-based tracer gases
- Meets SAE J2970 industry standards
- Includes 134a and 1234yf high-side coupler, hose and regulator for tracer gas

LD9-TG – H2 Tracer Gas Leak Detector Same as LD9-TGKIT without couplers, hose and regulator.

### New 2019 A/C system capacity databases



34411-J  
134a database  
For 34788, 34788-H  
& 34988 machines



34412-D  
134a database  
For 34288NI, 34788NI,  
34788NI-H & 34988NI machines



34413-B  
1234yf database  
For AC1234-4  
machines

#### Vehicle Database Screens R-134a Vehicle A/C Refrigerant Database 2019

- Confirm A/C system charge capacities directly from your Robinair A/C RRR machine for R-134a and R-1234yf systems, sold separately.
- Includes charge amounts and component oil capacities for vehicle model years 1997-2019 using R-134a refrigerant and vehicle model years 2013-2019 using R-1234yf refrigerant.
- Database helps ensure the vehicle system is charged with the correct amount of oil, per factory and OEM specification

**34411-J** – R-134a Vehicle A/C Refrigerant Database 2019. Compatible with legacy Robinair R-134a machines 34788, 34788-H, 34988.

**34412-D** – R-134a Vehicle A/C Refrigerant Database 2019. Compatible with new Robinair R-134a machines 34288NI, 34788NI, 34788NI-H, 34988NI.

#### R-1234yf Vehicle A/C Refrigerant Database 2019

**34413-B** – R-1234yf Vehicle A/C Refrigerant Database 2019. Compatible with new Robinair AC1234-4 R-1234yf recovery machine.

### MADE IN USA\* - LEAK DETECTORS FROM ROBINAIR

MEETS SAE J2913 & SAE J2791 ASHRAE 173-2012, EN14624-2012 INDUSTRY STANDARDS

\* Made in USA with globally sourced components



#### LD3

- Loud audible alert
- Automatic calibration

#### LD3 Features

- Long life, stable sensor
- Automatic calibration and reset to ambient
- 3 adjustable sensitivity levels
- Low battery indicator
- True mechanical pump
- Uses 4 AA alkaline batteries, included
- Rubberized Santoprene handle grip

#### LD5

- Color display with graphics and visual alerts
- Bar graph mode helps locate leaks faster
- Loud audible alert
- LED inspection lights
- Automatic and manual calibration

#### LD5 Features

- Unique color graphic LCD display
- Long life, stable sensor
- Automatic calibration and reset to ambient
- User friendly message and error screens
- High-intensity LED inspection light
- 3 adjustable sensitivity levels
- Low battery indicator
- True mechanical pump
- Audio mute function
- Uses 4 AA alkaline batteries, included
- Rubberized Santoprene handle grip

#### LD7

- Color display with graphics and visual alerts
- Bar and Pinpoint graphing modes help locate leaks faster
- Loud audible alert with mute option
- UV and Clear LED inspection lights
- Automatic and manual calibration

#### LD7 Features

- Patented 3 LED UV lights with 395-415 nm; wavelength is optimum for A/C dye fluorescence
- Unique color graphic LCD screen
- Long life, stable sensor lasts up to 10 years
- Sweep mode function to pinpoint leak source
- Automatic calibration and reset to ambient
- User friendly message and error screens
- High-intensity LED inspection light
- 3 adjustable sensitivity levels
- Low battery indicator
- True mechanical pump
- Audio mute function
- Uses 4 AA alkaline batteries, included
- Rubberized Santoprene handle grip

#### 41234

#### R1234yf Aluminum Manifolds and Hose Set

- Easy-to-read 3-1/8" adjustable gauges.
- Durable aluminum manifold block with fittings.
- Improved face seal valves provide a tight seal, less wear and improved flow.
- Easy-to-grip control knobs.

#### 45111

#### 2-Way Brass Manifold R134a Manifold Hose Kit

- 90° manual couplers
- 72" R134a hose set



#### UV Leak Detection Kit

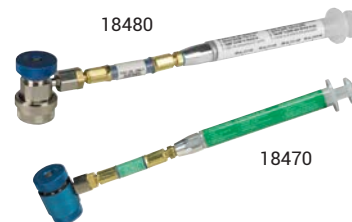


#### 16235

#### UV Leak Detection Kits

- The easiest and most accurate gun available today.
- No guesswork – a pre-measured application every time.
- One squeeze injects a pre-measured amount (1/8 oz.) of dye. No more adding too much dye.

#### Syringe-type Injectors



Use these syringe-type injectors to add oil to a fully pressurized A/C system. Fill the barrel with the amount of oil needed, connect the injector, and press the plunger.

**18480** – R-134A oil injector, PAG labeled

**18490** – R-134A oil injector, POE labeled

**18460** – R1234YF oil injector, generic

**18465** – R1234YF oil injector, PAG labeled

**18470** – R1234YF oil injector, POE labeled

Not recommended for UV dye injection.

### Robinair Vacuum Pumps

#### VacuMaster® Single Stage Vacuum Pumps

**15115** 1.5 CFM Vacuum Pump

**15310** 3 CFM Vacuum Pump

**15510** 5 CFM Vacuum Pump



#### VacuMaster® 2-Stage Vacuum Pumps

**15150** 1.5 CFM Vacuum Pump

**15300** 3 CFM Vacuum Pump

**15500** 5 CFM Vacuum Pump



#### CoolTech® Vacuum Pumps

**15434** 4 CFM Vacuum Pump

**15600** 6 CFM Vacuum Pump

