

HEAVY-DUTY SERVICE

OTC  BOSCH



**UNMATCHED
DIAGNOSTICS WITH BOSCH**



**KEEP YOUR TRUCKS
RUNNING WITH OTC**

Bosch Heavy-Duty Service

Industry-leading HD Coverage

- Bidirectional tests
- Engine adjustments
- Wiring diagrams
- Component information
- Electrical specs

Visit boschdiagnostics.com/pro to learn more.

ESI[Truck] HD Diagnostics

Unmatched Coverage and Repair Information at the Truck

The most complete diagnostic coverage for multibrand heavy-duty trucks and engines, performing special tests and parameter reset capabilities.

REPAIR INFORMATION SUBSCRIPTION SERVICE

ESI[repair] subscription service for ESI[truck] includes 13,000 experienced based fixes. The tool includes fixes specific to trouble codes and symptoms with repair information viewed while still in diagnostic mode.



Truck COVERAGE

Trucks: Freightliner, International, Kenworth, Mack, Volvo, Peterbilt, Sterling, Westernstar, MD Trucks (Freightliner Sprinter Van, Isuzu, GM and Ford). Trailer ABS Controllers; Allison & Eaton Transmissions.

ENGINE COVERAGE

Heavy-duty engines – Caterpillar, Cummins, Detroit Diesel-MBE, Deutz, Mack, MTU, Navistar, PACCAR, Perkins and Volvo. Medium and light duty engine software included.

3824
WINDOWS 7 TABLET SCAN TOOL
Includes VCI, 6 pin and 9 pin cables



3824BSC
SCAN KIT
• Use with your shop PC
• Includes Bosch diagnostic software, VCI, 6 and 9 pin cables.



3824-06
Bosch ESI[truck] Trailer Adapter
7-pin PLC adapter for trailer ABS diagnostics
– J2497 Power Line Carrier (PLC) communication compatible
– Allows direct connection to trailer
– Works with tractor present or without the tractor present
– External power supply is necessary without tractor
– Bosch ESI[truck] trailer ABS coverage for Bendix, Haldex, Meritor Wabco and Wabash systems



3824-10
Bosch ESI[truck] 9 Pin Adapter Cable High Speed Comm
• 9-pin heavy-duty diagnostic connector
• High-speed diagnostics communication
• Backward compatible with older black 9-pin vehicle connectors



3824-08
Bosch ESI[truck] License Renewal
12-Month Security Card



3824-08R
Bosch ESI[truck] Repair Information
Subscription 12-Month Security Card



Watch the tool used at a local shop.

More Coverage Greater Capabilities

Connect & Scan Trucks

- Auto Identify Heavy Trucks
- VIN Decoding

Special Functions & Settings

- Cruise Control Settings
- Fan Control Settings
- Idle Timers
- Engine Speed Settings
- Vehicle Speed Settings
- Accelerator Settings
- Fuel Injector Coding
- Variable Geometry Turbo (VGT) Calibration
- Mass Air calibration
- Password Management
- Aftertreatment
 - DPF Regeneration
 - Maintenance Resets
 - HS purging doser
- Leakage Monitoring
- EGR calibration
- Fuel Volume Control Valve (FVCV) Calibration
- Pressure Limiting Valve Reset

System Tests

- Cylinder Cut-Out/Deactivation
- Cylinder Compression Test
- Cylinder Output
- Cylinder Balance
- Engine Speed
- Fuel System Pressure Tests
- Fuel injector tests
- Fuel Rail Pressure Test
- Glow plug
- Starter Motor Lockout
- Exhaust backpressure
- Aftertreatment
 - Fuel solenoid test
 - Fuel pressure test
 - System performance test
 - DPF fluid system tests

Actuations

- EFC solenoid
- Fan activation/control
- Intake air heater
- Throttle valve
- PWM Signal Components
- Turbo control valve
- Water separator drain valve
- Engine brake
- Gear shift solenoid
- Pressure control solenoid
- Indicator lamps
- Torque converter clutch pressure solenoid valve
- Clutch tests
- Service settings
- Acceleration pedal calibration

Engine, Transmissions, Brakes, Trailers

- | | |
|----------------------|--------------------------|
| • Aisin | • Mack |
| • Allison | • Mercedes-Benz |
| • Bendix | • Meritor Wabco |
| • Caterpillar | • MWM |
| • Cummins | • Navistar International |
| • Daimler | • PACCAR |
| • Detroit Diesel-MBE | • Thermo King |
| • Eaton | • Carrier (Coming soon) |
| • Haldex | • Voith |
| • IMMI | • Volvo |
| • Isuzu | • Wabash |
| • Iveco | • ZF Meritor |

Heavy Duty Trucks

- Caterpillar
- Freightliner
- International
- Kenworth
- Mack
- Peterbilt
- Pierce
- SAE Standard
- Sterling
- Volvo USA
- Western Star
- Workhorse
- SAE J1939/1708/1532

Medium & Light Duty Trucks

- | | |
|-----------------|-----------------------|
| • Agrale | • KIA |
| • Dodge | • Mercedes-Benz |
| • Fiat | • Mitsubishi |
| • Ford | • Mitsubishi Fuso USA |
| • Foton | • Nissan |
| • Freightliner | • Piaggio |
| • GMC/Chevrolet | • Sterling |
| • Great Wall | • Toyota |
| • Hino USA | • UD Trucks |
| • Hyundai | • Volkswagen |
| • Isuzu | • UD |
| • Iveco | |

Repair Information (Additional Subscription)

- Read & clear fault codes
- Live data stream - New! System diagrams with data display
- View fault information
- Component locations – Pictures & diagrams
- Wiring Diagrams – Engine, Transmission, Brake Systems
- Component technical data
- System technical data
- New! – Expanded Troubleshooting (Additional Subscription Service)
- VIN decoding & truck “Auto-ID”

Useful Shop Features

- Windows PC Tablet – Works with shop network and printers
- Customizable Reports - Create vehicle history; Customer review (Repair shops)
- Creates entire vehicle fault code report for easy “Health Check”
- Easy access to common tests for truck & engine models

High-pressure leak detection for heavy-duty system diagnostics & repair

1699500000
HPT 500 Features

- Quickly locate leaks in exhaust after treatment systems and other truck systems such as turbo/boost, charge air cooler, exhaust system, wind and water, cabin, intake system, seals, gasket, hoses, fittings, etc.
- Greatly reduces diagnostic time, cuts downtime on import trucks and eliminates come-backs by ensuring first time fix
- Pinpoints the root cause of diesel particulate filter system problems and emissions cleansing catalyst issues associated with import trucks
- Finds exhaust leaks in minutes preventing carbon monoxide vapors in the driver’s cabin area and inside bus passenger compartments



1699500001
HPK 200 Accessory Kit for HD and Medium Duty Applications

- Cooling system adapter
- SmokeMeister wands
- Exhaust stack retention hoop
- Power intake adapter 3.9” (2 included)
- Accessory storage case
- Halogen inspection light
- Vapor producing fluid
- Ball-end hex point L key
- Oxygen sensor port adapter
- Temperature sensor port adapter



- Pressure sensor port adapter
- Block off coupler
- Detachable 12V DC power cable
- Quick start guide

Medium and heavy-duty diagnostics for heavy-duty and aftermarket shops

Ideal for heavy-duty shops as a second diagnostic tool and mobile repair trucks

1699200239

Cost-effective solution for aftermarket shops in need of heavy-duty coverage

Heavy-duty standard coverage for medium and heavy-duty trucks

HDS 200 Features

- Brilliant Color Display
- Rugged enclosure for durability
- Class 4 – Class 8 truck coverage featuring “Automatic Protocol Search”
- HD J1587 / J1708 and J1939 CAN, Engine, Transmission/ABS coverage and more
- Global OBD II Quick Test
- Gasoline and diesel engine coverage
- Read and clear diagnostic trouble codes
- Live vehicle data includes
 - Engine speed
 - Engine ECU temperature
 - Percent acceleration pedal position
 - Engine intercooler temperature
 - Engine coolant temperature
 - Battery voltage
 - Alternator voltage output
 - Ambient air temperature
 - Air inlet temperature
- On-screen definitions of diagnostic trouble codes



HDS 200 Includes

HD Scan tool, 9 Pin Deutsch Cable, 6 Pin Deutsch Cable, 16 Pin HD/OBD II Cable, USB Cable, Quick Start Guide, Carrying Case and 1-Year Warranty.



Upgrade from soapy water to high pressure leak detection

Test an entire heavy-duty system in 15 minutes including exhaust after-treatment systems with Bosch HPT 500

Technicians have been struggling with conducting safe and efficient diesel particulate filter (DPF) maintenance and repairs on heavy-duty trucks. DPF challenges have only become more complex with the release of the most recent clean air mandates. Heavy duty technicians have been fixing diesel faults in a couple of inefficient and risky behaviors. These include:

- Pressurizing a system by starting the engine, sliding under the running truck, and spraying soapy water to look for bubbles that indicate a leak point.
- Using an ultrasonic listening device

Not only are these methods imprecise, dangerous and costly, but it’s near impossible to reach many components in modern trucks to see the soap bubbles if they appear and it can take many tries to locate a leak.

Time consuming, dirty, and imprecise, the outdated standard practice of locating upstream component faults with soapy water or a supersonic listening device often results in trucks spending unnecessary days in the repair facility, out of service. However, the release of a new technology has proven to be an efficient solution to this complex problem. Manufactured by Bosch, the HPT 500 uses regular compressed air to reach and maintain a variable pressure of 2 to 20 psi throughout the vehicle’s intake and exhaust system. Patented, durable expanding block off adaptors fit any size and shape orifice to cleanly seal off intake and exhaust. Compressed air is injected into the system, followed by a visual vapor, which replicates the boost load of the running engine, with the engine safely off; many upstream component leaks only appear under boost. The dense, highly visible vapor flows throughout the truck’s hoses, tubes and related components and escapes anywhere there is a leak. As the visible vapor flows through the pressurized system, within minutes it indicates all faults that are present throughout the entire system, making it easy to see precisely where the problems are, with 100% accuracy and reliability.

Bosch’s High Pressure Leak Tester

The HPT 500 is the only diagnostic machine in the heavy duty market that can, in a single 10-minute procedure, reliably detect high-pressure and low pressure upstream faults, pinpoint exact locations and precisely identify failing components. The technology is being used in the following applications:

- Preventive maintenance to locate faults before they trigger excessive forced DPF regenerations or the engine going into de-rated operation
- Test the integrity of the air intake and exhaust systems once, as the vehicle comes in, without disturbing components to perform test
- Use for fast triage diagnostics when vehicles come in “on the hook”
- Determine if unfiltered air is entering engine (prevent engine dusting)
- Quickly determine if delta pressure upstream tubes are clear
- DPF Protection – not plugging filter due to unresolved upstream leaks (exhaust bellows, v clamps, exhaust manifold flanges, cracked tubing, compressed air charge leaks)
- Diagnosis of all charge air cooler leaks
- Used to prevent the uninstal of a leaky tube or component to test charge air cooler then re-install of the leak
- EGR cooler diagnostics, determine if internal coolant or exhaust gaskets are leaking
- Determine engine performance variables / confirm clamps on charge air system are correct
- Used to find SCR system leaks and prevent DEF fluid crystallization
- Locate crank case oil leaks quickly w/o washing engine first
- Determine if crank case filter is plugged
- Locate point of water intrusion in the cab
- Locate point of potentially dangerous carbon monoxide cab leaks
- Validate repairs are completed and systems are sealed before returning vehicle to customer; preventing comebacks

The HPT 500 has saved 43-120 minutes per vehicle in preventative maintenance and repair.

With an average payoff return on investment in just 4.63 weeks.

The high pressure leak tester provides a cost-effective, safe alternative that will change standard practices for heavy duty preventative maintenance and repair.

Hendrickson Suspension



REMOVE AND INSTALL SELECT HENDRICKSON HEAVY DUTY SUSPENSION BUSHINGS

4246 Hendrickson Rear Suspension Bushing Tool Kit

Replace rusted and frozen heavy-duty rear suspension bushings faster and easier

- Patent-pending design is suspension-mounted, eliminating the need to hold the tool during operation
- Remove and install Hendrickson PRIMAAX EX, COMFORT AIR, FCCC V Ride™ Pivot and D-Pin Bushings
- Save time and effort during suspension service to get trucks back on the road faster
- Included adapters align tool with the suspension to ensure proper bushing installation and reduce the chance of misalignment and bushing damage
- Includes an OTC 4106A 25-ton high-force cylinder



- ### 4247
- Adds an OTC 2510A air/hydraulic pump to make bushing service faster and easier
 - Includes everything in the 4246 kit



4250 Hendrickson Adapter Kit for Front Suspensions

- Use with your 4246 or 4247 Rear Tool on select Hendrickson Front Suspensions
- Remove and install Hendrickson PACCAR Monoleaf, Navistar Monoleaf, Volvo Monoleaf suspension Pivot Bushings



4274 Hendrickson Front Suspension Bushing Tool Kit

Replace rusted and frozen heavy-duty front suspension bushings faster and easier

- Patent-pending design is suspension-mounted, eliminating the need to hold the tool during operation
- Remove and install Hendrickson PACCAR Monoleaf, Navistar Monoleaf, Volvo Monoleaf suspension Pivot Bushings
- Save time and effort during suspension service to get trucks back on the road faster
- Included adapters align tool with the suspension to ensure proper bushing installation and reduce the chance of misalignment and bushing damage
- Includes an OTC 4106A 25-ton high-force cylinder



- ### 4275
- Adds an OTC 2510A air/hydraulic pump to make bushing service faster and easier
 - Includes everything in the 4274 kit



4254 Hendrickson Adapter Kit for Rear Suspensions

- Use with your 4274 or 4275 Front Tool on select Hendrickson Rear Suspensions
- Remove and install Hendrickson PRIMAAX EX, COMFORT AIR, FCCC V Ride™ Pivot and D-Pin Bushings



DPF Equipment

5286 OTC Portable Diesel Particulate Filter Cleaner

- The advent of the 2010 Tier 4 cleaning requirements created the need for a lighter, more portable cleaning system which can be taken into the field to clean filters at the point of service.
- Lightweight and Highly Portable - ideal cleaning system for use in the shop or on a service truck.
- Flexibility - clean DPF's from 6" to 15.5" in diameter using shop or compressed air of at least 100 PSI.
- Fully Automated Operation - once started, the cleaning process can be completed unmonitored, freeing up technician to simultaneously do other work in the shop.
- Focused Air Jet Technology™ - concentrates a precise high pressure stream of air directly into every cell.
- Maximum Efficiency - OTC's unique floating puck prevents "splash back," which maximizes the volume of air entering each cell.
- Easy Maintenance - contains no internal filters that require user maintenance and its rugged design provides maximum durability.



5280 Diesel Particulate Filter Cleaner

- Robust design for long shop life.
- High pressure cleaning process for thorough cleaning of ash from DPF – produces 10 times the burst energy of competitive low pressure units.
- Burst Quick Check identifies if filter is too plugged for proper cleaning.
- Movable with locking wheels for placement throughout the shop.
- Computer controlled process based on OE requirements for start-to-finish cleaning without constant technician monitoring.
- Containment of hazardous ash for easy disposal.
- HEPA Filter Air Exhaust System included to exceed shop environmental air standards.
- Operates on standard 115V outlet.
- Proven to clean to over 92% efficiency.
- Third-party OEM test results using pin gauge measurement with approved OTC adapters and burst cycles. Actual results may vary.



5281 OTC DPF Thermal Processing Unit

- Designed to facilitate the cleaning of filters – with high amounts of wet soot, and unburned hydrocarbons.
- Pre-programmed thermal profile controls temperature "ramp up" and "cool down" to reduce the risk of cracking the DPF.
- Includes "pre-treat" cycle for oil-soaked filters.
- Holds temperature constant for two hours to ensure complete regeneration of filter.
- Built-in electronic safety lock prevents unauthorized opening of the door when temperatures exceed 200 degrees F.
- Large chamber accommodates various DPF sizes and shapes. Front access door allows for easy access to the thermal chamber.



50255 Diesel Exhaust Fluid (DEF) Refractometer SCR & EPA 2010

- The OTC 50255 makes this a simple and quick process for an operator or technician to get an accurate measurement of UREA concentration in DEF or AdBlue solution.

Scale:
0.5% line graduations
32.5% Indicated
Scale 15-40%
Waterline & 20 Deg C

Application:
The refractometer is a portable, precision, optical instrument used for measuring the Diesel Exhaust Fluid (DEF) concentration. When a liquid sample is placed on the prism, the light passing through it is bent and shows on the scale to indicate the DEF condition.



NEW Diesel Exhaust Fluid (DEF) Transfer Equipment



4342 DEF Electric Pump Tote Kit with Dispenser Coupler

The Electric DEF Pump Tote Kit quickly transfers fluid from DEF totes. The kit includes everything needed to pump DEF into barrels for easier transport and refilling of vehicle systems. It includes the OTC 4338 Electric Pump, a manual nozzle, hoses and brackets to mount to a standard DEF tote. Additionally, it includes the OTC 4333 Dispenser Coupler to keep moisture out of the container, maintaining high levels of DEF concentration and fluid effectiveness. (Drum and tote not included.)

4341 DEF Electric Pump Tote Kit

Same as the 4342 does not include 4333 Dispenser Coupler.



4344 DEF Electric Pump Drum Kit with Dispenser Coupler

The Electric DEF Pump Drum Kit quickly transfers fluid from DEF totes to barrels. The kit includes everything needed to pump DEF into barrels for easier transport and refilling of vehicle systems. It includes the OTC 4338 Electric Pump, a manual nozzle, hoses and brackets to mount to a standard DEF tote. Additionally, it includes the OTC 4333 Dispenser Coupler to keep moisture out of the container, maintaining high levels of DEF concentration and fluid effectiveness. (Drum and tote not included.)

4343 DEF Electric Pump Drum Kit

Same as the 4344 does not include 4333 Dispenser Coupler.



4333 DEF Dispenser Coupler

The reusable DEF Dispenser Coupler helps maintain diesel exhaust fluid concentration and purity by preventing contamination. It connects and disconnects easily from compatible containers including 55-gallon drums and DEF totes. Viton seals nearly eliminate leaks and stainless steel construction provides extra durability and reliability.

4334 Digital Turbine DEF Flow Meter

OTC's DEF Digital Turbine Flow Meter accurately measures fluid volume transferred for DEF, windshield washer fluid and other water-based fluids, even in severe weather conditions. It is designed for measurement in-line or end-of line when used with a dispensing nozzle. The digital display shows fluid transferred in quarts, pints and gallons and uses two AAA 1.5 volt batteries. Polyamide construction ensures a strong and protective housing for durability and a long work-life.



4339 Air Operated DEF Pump

OTC's Air Operated DEF Transfer Pump uses compressed air to pump and quickly move DEF and other fluids. It is designed to be mounted to drums from 15 to 55 gallons using its built-in 2" bung adapter. A versatile and industrial design enables the pump to also move engine oil and antifreeze without damage.

4337 Rechargeable Electric Pump

This Rechargeable DEF Transfer Pump makes dispensing diesel exhaust fluid easy in remote locations. A flow rate of 6 gallons per minute with a charge that lasts 15 minutes can transfer up to 90 gallons on a single charge. It is lightweight and easy to use with drums or totes with a telescoping inlet tube and flexible hose. Included with the pump is a one-hour quick charger, a lithium-ion battery and a manual nozzle.



4338 Electric DEF Transfer Pump

The 115 volt 3.0 amp electric DEF pump can pump at a rate of 9 gallons per minute for 30 minutes for more heavy usage. Generating .5 horsepower with speeds up to 2850 rpm, the pump can quickly move up to 270 gallons in 30 minutes. Lightweight construction makes it easy to transport while still being capable of withstanding rain and is engineered to pump water and antifreeze in addition to DEF.



4336 Hand Operated DEF Pump

The lever-action barrel-style hand pump pulls DEF from 15 to 55-gallon drums with a 2" opening without any electricity or compressed air. The hand-operated pump is ideal for low-volume DEF transfer in the field or the shop. A lightweight and durable design features a long telescoping inlet tube and flexible outlet hose. The multi-purpose design can also be used with engine oil, antifreeze, and windshield washer fluid.



4340 Air Operated Double Diaphragm DEF Pump

The Air Operated Double Diaphragm DEF Pump makes quick work of large-volume DEF transfer. It easily installs on most containers or free-floating in fluid. A versatile design can transfer contaminated liquids when cleaning out pits and, when properly installed, is capable of submersed operation. It can also pump antifreeze, ethanol and waste water.



4335 Auto Shut-Off DEF Nozzle

A dual-mode automatic DEF control nozzle that can be held open manually or locked to control flow of fluids. It will automatically shut off once the DEF level in the tank reaches the outlet discharge spout to avoid spilling or overfilling. It has a heavy duty stainless steel cast body with a polyamide cover for durability and protection. It can also be used with other water-based fluids and E85.

Hydraulic Flow Meters

Unparalleled accuracy in testing hydraulic oil flow circuits for vehicles and machinery. All are protected by a durable steel case. Pressure accuracy is at +/- 1.6% of full scale. Due to their standard burst disc protection system, overpressure conditions prevent spillage of hydraulic fluid. All devices accommodate bi-directional flow and are CE marked as appropriate.



4277 50 gpm Mechanical Hydraulic Flow Meter

- Flow Accuracy to +/- 4% of full scale
- Measures flow from 4 to 54 gpm
- Pressure up to 6000 psi
- Fluid filled analog gage that dampens vibration
- Temperatures up to 230 deg F
- Reads flow in one direction
- No batteries required
- Port is 1-5/16" - 12 UN JIC Male
- 12.25" x 4.125" x 4.875", weight 14.5 lbs



4278 100 gpm Digital Hydraulic Flow Meter

- Flow Accuracy to +/- 1% of indicated value
- Measures flow from 2.5 to 100 gpm
- Pressure up to 6000 psi
- Digital display for flow, temperature, analog for pressure
- Temperatures up to 250 deg F
- Reads flow in both directions, pressure on the high side of valve
- Requires 1 9V battery (included)
- Port is 1-5/16" - 12UN #16 SAE ORB
- 9.45" x 7.87" x 7.87", weight 14 lbs



4285 100 gpm Digital Hydraulic Flow Test Kit

- Includes OTC 4292 Digital Readout and OTC 4291 Flow Block with Loading Valve
- Flow Accuracy to +/- 1% of indicated value
- Measures flow from 2.5 to 100 gpm
- Pressure up to 6000 psi
- Digital display for flow, temperature, analog for pressure
- Reads flow in both directions, pressure on the high side of valve
- Require 1 9V battery (included)
- Port is 1-5/16" - 12UN #16 SAE ORB
- 12.99" x 12.4" x 10.24", weight 17lbs



- ### 4290 16 gpm Flow Block
- Can be used with Digital Flow Meter Readout OTC 4292 included in OTC 4285 and OTC 4294
 - Port is 1-1/16" - 12UN #16 SAE ORB
 - Flow range from 1 to 16 gpm
 - Max pressure 6000 psi



- ### 4291 Flow Block with Loading Valve
- Can be used with Digital Flow Meter Readout OTC 4292 included in OTC 4285 and OTC 4294
 - Knob allows for pressure loading/restriction
 - Port is 1-5/16" - 12UN #16 SAE ORB
 - Flow range from 2 to 100 gpm
 - Max pressure 6000 psi



4292 Hydraulic Flow Measurement Digital Readout

- For remote flow measurement by using Flow Blocks OTC 4290 or OTC 4291
- Included in OTC 4285 and OTC 4294
- Digital display for flow, temperature, analog for pressure



- ### 4294 Deluxe 100 gpm Hydraulic Flow
- Measurement Set
 - Comprised of OTC 4290, OTC 4291, OTC 4292, Long Cable and Hose Set and Short Cable
 - Case included



- ### 573296 Short Cable
- For remote testing the 573296 connects a hydraulic display with a flow block to measure.



- ### 573295 Long Cable / Hose
- For remote testing the 573295 connects a hydraulic display with a flow block to measure.

OTC Equipment



5105B 1,100 lb. Capacity High-Lift Dual Wheel Dolly

- Effortless air-powered hydraulic lift system for a variety of applications.
- 0 to 42" lifting range.
- Six-inch lateral adjustment.
- Tilt adjustment of +15° to -8° for easy alignment.
- Features four swivel casters, two locking, for enhanced mobility.



5015A Truck Clutch & Flywheel Handler

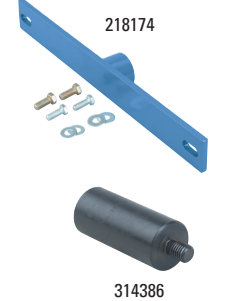
- Handles 14" and 15-1/2" clutch assemblies weighing up to 150 lbs.
- Lifting range of 9" to 37". Swivel casters provide easy maneuverability.
- Includes a 2" spline shaft with a 1-1/4" pilot to aid in alignment.

218174
Optional Flywheel handling attachment for use on No. 5015 and 5015A only.

48625
Optional splined shaft, 1-3/4" dia. with a 1-1/4" pilot.

440533
Optional splined shaft, 1-3/4" dia. with a 1" pilot. Needed for clutch service on some Navistar 466 series engines.

314386
Optional 1-3/4" dia. alignment shaft extension. Used for 2-plate clutch of Navistar 466 series engine.



5130 OTC 1,000 lb. Capacity DriveMaster™ Driveline Lift

- Low profile of 7".
- Lift range: 23" to 30".
- Pivoting pump handle +/- 15° tilt in each direction.
- Includes 553516 differential mounting adapter. Mounts easily using existing bolt patterns. Fits the most common differentials currently in use on Category 7 and 8 Heavy Duty Trucks. Including: Eaton, Fuller, Rockwell, Meritor, Spicer, International, and Mack.
- CE certified, PALD compliant.



5018A Truck Clutch and Flywheel Handler

- Replaces 14" & 15-1/2" clutch assemblies weighing up to 250 lbs.
- 13" low point enables access below side faring.
- Linkage raises load from horizontal to vertical position.
- 360 degree swivel head.
- Covered by OTC Lifetime Warranty®.

516160
Optional flywheel handling attachment

515686
Optional splined shaft, 1-3/4" dia. with 1-1/4" pilot

516159
Optional splined shaft, 1-3/4" dia. with 1" pilot



1590

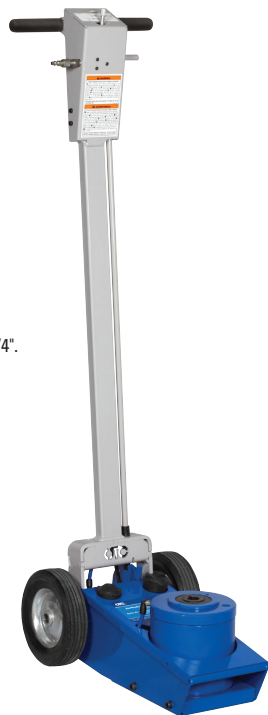
10-Ton Air Lift

- Adjustable lifting saddles and an extra wide stance for extra stability.
- 10 tons of lift at 200 PSI air pressure.
- Lifting range is 13" to 52".
- Automatic mechanical safety catch engages in five height positions.

5292

27.5-Ton Capacity Under-Axle Jack

- Features class-leading 27.5 ton capacity.
- Robust design with completely sealed piston.
- New lever design and pneumatic release valve for more precise release control.
- Power return allows lowering with no load.
- Includes two height adapters for flexibility.
- PALD compliant.
- Minimum retracted height (with saddle only): 8-1/4".
- Maximum extended height (with screw extended and large adapter): 21-3/8".
- Stroke: 4.9375".
- PSI range: 90 to 175.



5190A

Heavy-Duty U-Joint Puller

- The ideal tool for disassembling drivelines.
- May be used with up to a one-inch impact wrench.
- Quickly and easily removes sealed U-joint cups without the need for hammering or heat.
- Will not damage the driveshaft, yoke, bearing cups, or joints.
- Fits practically all Class 7 and 8 trucks, including: Spicer driveline 1610, 1710, 1760, 1810, 1880 Spicer SPL 140, 170, and 250 "Life Series" Meritor (Rockwell) 16N, 17N, 18N, 1710Meritor RPL 20 and 25 "Permalube" Series.



5038

Brake Anchor Pin and Bushing Service Set

With the No. 5038, there is no need to remove the bearing hub assembly just to replace the pins and bushings on 16-1/2" S-cam trailer and tractor "Q" brake systems. Much less complicated and time consuming!

- Special tooling and our C-frame press get you past the hub assembly, so you can do the job quickly and professionally without damaging other parts.
- Includes everything needed for removal and replacement.



1770A

1,500 lb. Dual Wheel Dolly

- Hydraulic jack provides almost 5" of lift and tilts wheel assembly 4° to prevent damage to wheel seal.
- Independent lifting rack provides maximum stability; rollers won't catch on load.
- Swivel casters for easy maneuverability.
- Floor space is 45" by 41".
- 6' chain holds load in place.
- Covered by OTC Lifetime Warranty®.



4295

Wheel Stud Service Kit

- Works on most hubs for installation and removal.
 - All sizes of studs.
- Installation done by pushing on the head, eliminating the need for threaded adapters.
 - Reduces number of adapters required
 - Reduces damage to studs
 - Increases ease of use
- Remove and install 10 studs in only 10-15 minutes (compare to 20-30 minutes for more expensive competitive products).
- Can be powered with an impact wrench, no hydraulic power source required.
- No need to remove hub from vehicle.
- Reduces risk of damage to hubs, studs, and bearings when using tool.
- Weighs only 12 lbs., assembled to remove studs and 14 lbs., assembled to install studs.

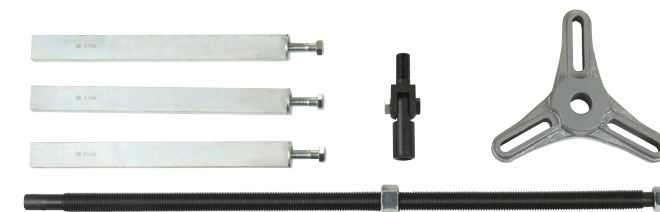


7180

Universal Bearing Cup Installer

This handy, adjustable tool is designed to install wheel-bearing cups in a wide range of heavy-duty axles. Simply adjust and lock the jaws to the cup I.D., slip on the new cup, set it in the bore, and drive it in with a hammer. The tool helps eliminate the damage caused by makeshift methods.

- Works on axles from 11,000 to 50,000 lb. capacity.
- Adjusts to fit 3-5/8" to 6-1/2" O.D. bearing cups, which adds up to as many as 30 individual drivers.



1200

Manual Sleeve Puller Set:

This manually operated, screw-powered device removes cylinder sleeves from most truck, bus, and tractor engines. Adapter plates (not included in the set) accommodate a wide range of bore sizes. The puller enables one technician to handle sleeve-pulling tasks.

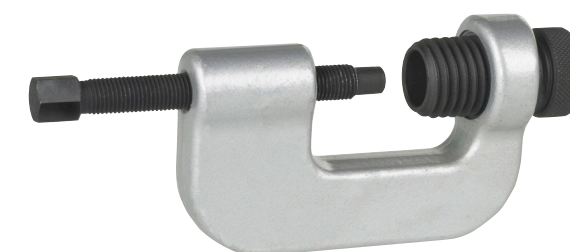
Note: Not recommended for MACK engines.



4200

Nozlrater Diesel Injector Nozzle Tester

The Nozlrater tester enables you to check for leakage, pop-off pressure, spray pattern, and chatter. This tool will accommodate a wide range of injectors. Troubleshoot nozzles used in popular automotive, agricultural, and construction engines.

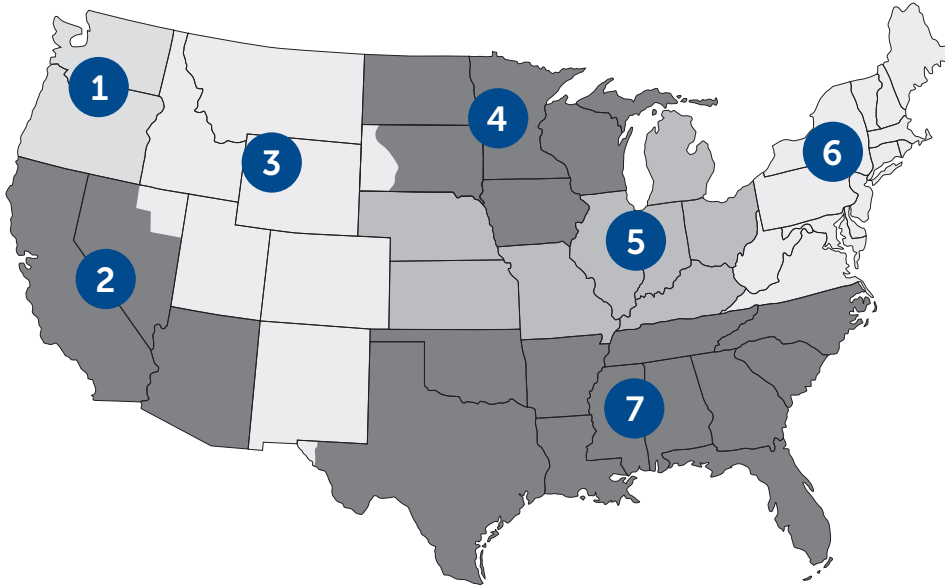


5057

Clevis Pin Press

Removing corroded clevis pins from a brake air-chamber push rod can be a maddening and time-consuming task— unless you're using our clevis pin press. This handy screw-operated tool applies the force just where it's needed. The pin is easily removed from its hole without damaging nearby components.

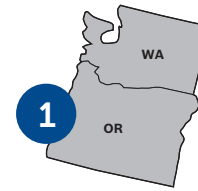
BEST-IN-CLASS FIELD SUPPORT



Bosch Field Technical Sales



Scott Davis
(509) 572-5619



Action Marketing



George Patterson
(503) 581-9006



Patrick Brewer
(360) 719-2152



Eric Adamson
(425) 743-8760



Ken Richards/Alex Cho
(425) 361-7895/(808) 845-5853



Bosch Field Technical Sales



Sam Pok
(562) 547-3454



Western States Marketing



Ryan Stronk
(714) 235-5519



Craig McKnight
(916) 705-5514



Alfredo Ortiz
(714) 235-7304



Robert Mode
(602) 931-5506



Parker Stronk
(801) 634-0278

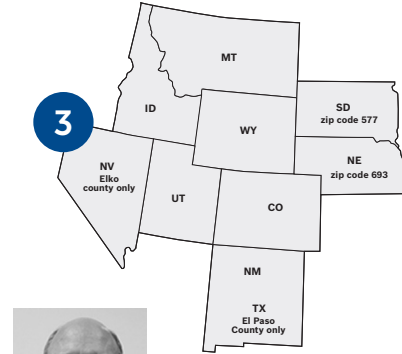


Marco Gomez
(559) 660-6010

Bosch Field Technical Sales



Scott Davis
(509) 572-5619



High Country Marketing



Bruce Stronk
(801) 233-0007



Harold Hartman
(505) 217-5600



Keith Evans
(801) 953-6248

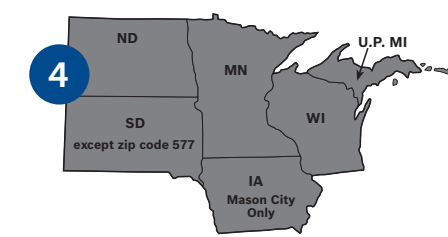


Tom Dinkel
(303) 949-7905

Bosch Field Technical Sales



John Schommer
(320) 247-8196



DNR Sales



Jeff Causton
(612) 991-3417



Russ Westfall
(612) 991-3418



Bruce Dodson
(612) 275-9438



Dan Fasching
(763) 370-1867



Jack Raiche
(612) 801-2225



Tom Thompson
(920) 819-0700



Frank McNulty
(507) 390-3466



Doug Hanson
(218) 416-2656

Bosch Field Technical Sales



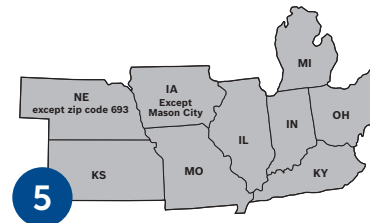
Joe Barton
(636) 688-0053



Guy Garrett
(937) 361-5211



Nick Zappitelli
(216) 392-0559



McCourt Marketing Group



Shelton Riffle
(330) 289-5912



Fred Barnhill
(614) 332-7878



Jim Loomis
(630) 277-2219



Sean McGibbon
(330) 607-3243



Fred Miller
(517) 294-2543



Bruce Millinger
(314) 691-4666



Dennis Wilkinson
(330) 592-7948



Jeremy Yoder
(330) 607-2280

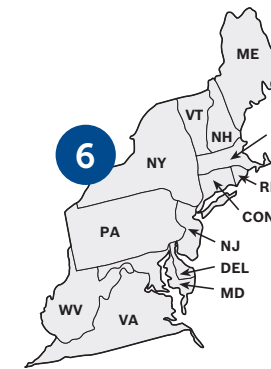
Bosch Field Technical Sales



Lee Brewer
(540) 395-1262



Brett Sanelli
(860) 917-1730



S-L Marketing Specialists, Inc.



Michael Masce
(603) 860-8167



Richard Russell
(410) 917-8786



Richard Deemer
(201) 787-1819



Dwight Simpson
(315) 209-7773



Chris Schaub
(201) 417-2066



Pat O'Brien
(201) 874-7796



Kevin Conklin
(516) 317-8954



Bob Klein
(412) 228-7524

Bosch Field Technical Sales



Richard Zenteno
(512) 639-3107



Marshall Townsend
(407) 314-4519



Chris Ellington
(770) 324-9426



N.A. Williams Tech Sales & Service



Stuart Amols
(386) 679-0595



Roger Bentdahl
(678) 727-3760



Brain Messenger
(737) 600-5889



David Miller
(704) 776-3276



Carlos Pinero
(305) 297-3047



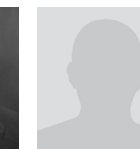
Eric Raschke
(713) 898-9561



John Swientek
(817) 729-1230



Matthew Wynne
(770) 367-1834



Steve Myatt
(870) 476-2575

Buy ESI[truck] (3824), DPF Cleaner (5280) and a DEF Refractometer (5025), get 10% rebate



ESI[truck] (3824)



DPF Cleaner (5280)



DEF Refractometer (5025)

See pages 2 & 4

Purchase a Bosch 3824 or 3824BSC and receive an OTC 3095 DEF Tester

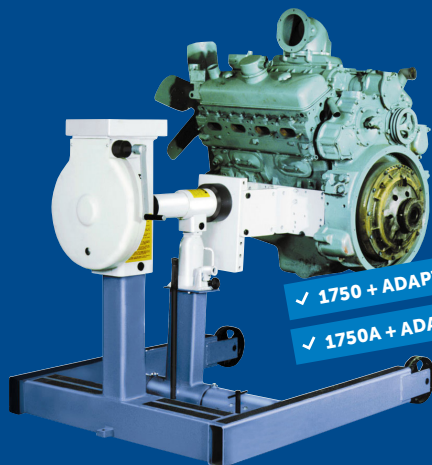


ESI[truck] (3824)



HD Digital DEF Tester
(3095)

BUY A 1750 OR 1750A ENGINE STAND AND ADAPTER*, GET \$150 OR \$200 REBATE



✓ 1750 + ADAPTER* = \$150 REBATE
✓ 1750A + ADAPTER* = \$200 REBATE

For a list of eligible adapters
visit otctools.com/promotions

See page 8 for engine stands

PROMOTIONS

All promotions valid July 1, 2017 through Sept. 30, 2017 unless otherwise stated. Redeem at Boschrebates.com. Dated proof of purchase required. Must redeem by Oct. 31, 2017.

RECEIVE A FREE ACCESSORY WHEN YOU BUY AN OTC LIFT



1590

5130



572913



558382



561949

Eligible Presses

Free Accessory

Buy 5130

558382 or 561949

Buy 1590

572913

RECEIVE A FREE ACCESSORY WHEN YOU BUY AN OTC PRESS



1826

1879

1880

1881

1882

Eligible Presses

Free Accessory

Buy 1823A or 1824A

1879

Buy 1825

1880

Buy 1826 or 1826A

1881

Buy 1850 or 1851

1882