



655 Eisenhower Drive
 Owatonna, MN 55060 USA
 Phone: (507) 455-7000
 Tech. Serv.: (800) 533-6127
 Fax: (800) 955-8329
 Order Entry: (800) 533-6127
 Fax: (800) 283-8665
 International Sales: (507) 455-7223
 Fax: (507) 455-7063

Form No. 528971

**Parts List &
 Operating Instructions**
 for:

528861

Engine Mounting Adapter

Application: POWERTECH 4.5L and 6.8L Engines

This adapter is used with either 1750A (6,000 lb.) engine repair stand or 1735 (2,000 lb.) engine repair stand to perform out-of-chassis engine repairs.

Parts List

Item No.	Part No.	No. Req'd.	Description
1	19693	4	Hex Head Cap Screw
2	214490	2	Hex Head Cap Screw (M12 x 1.75 x 35 mm)
3	221664	1	Hex Head Cap Screw (M14 x 35 mm)
4	221665	1	Hex Head Cap Screw (M14 x 60 mm)
5	221668	1	Spacer
6	528972	1	JD Engine Adapter Weldment
7	51401	1	Adapter
8	204897	4	Spacer (1.125" OD x 1.5" Lg.)

Refer to any operating instructions included with the product for detailed information about operation, testing, disassembly, reassembly, and preventive maintenance.

Items found in this parts list have been carefully tested and selected by OTC. Therefore: Use only OTC replacement parts!

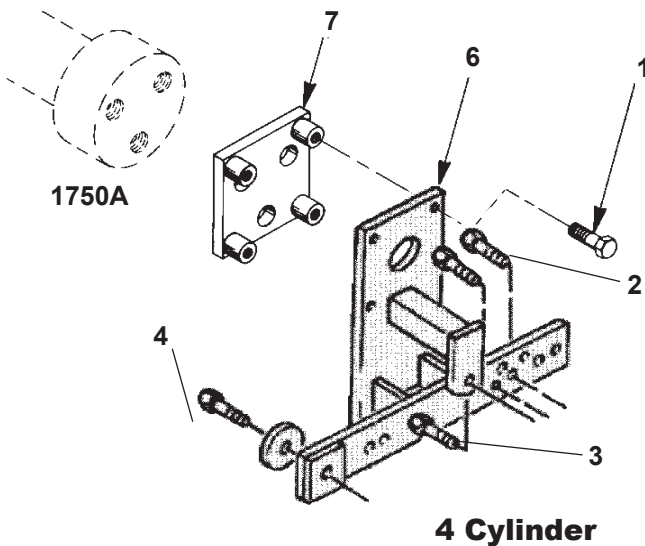
Additional questions can be directed to the OTC Technical Services Dept. at 1-800-533-6127.



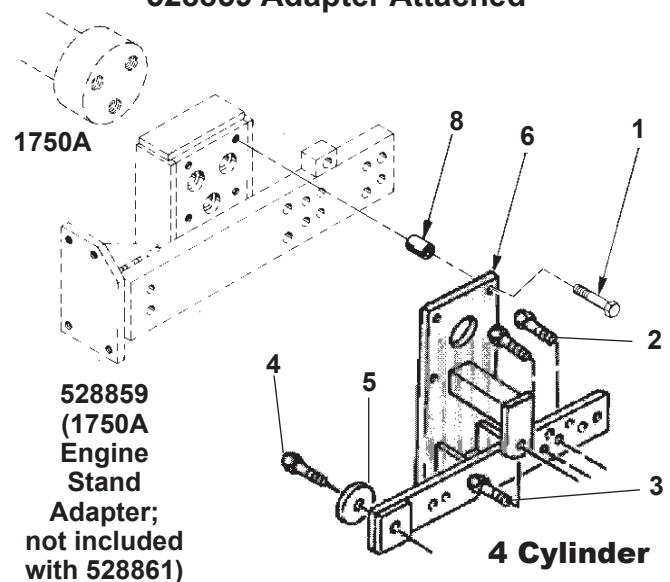
WARNING: Wear eye protection that meets ANSI Z87.1 and OSHA standards.

Engine Mounting Adapter to Engine Stand Setups

1750A Engine Stand



1750A Engine Stand with a 528859 Adapter Attached

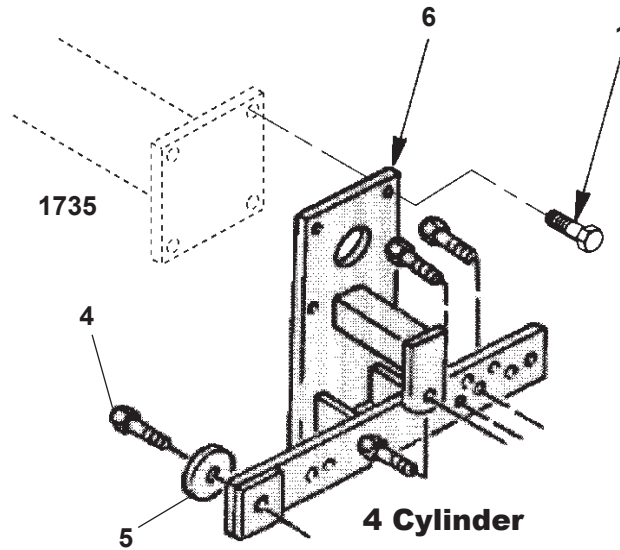


Sheet No. 1 of 1

Issue Date: May 21, 2018 Rev. B

Engine Mounting Adapter to Engine Stand Setups *Continued* . . .

1735 Engine Stand



The 6-Cylinder setup is the same in all cases as the 4-Cylinder except the location of the (2) hex head cap screws and the (5) spacer. See correct placement below.