

SPX-VCI Quick Start Guide

Installation

1. Turn PC on and allow Windows® to boot up.
2. Insert the SPX-VCI CD into the CD reader. If the install does not automatically initiate, open the Run utility from the start menu and enter:

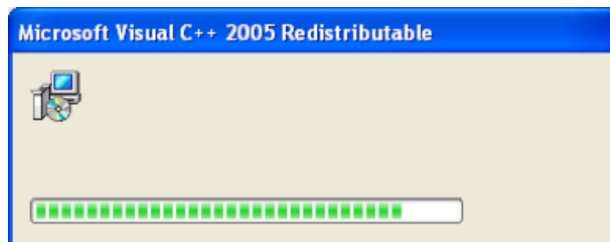
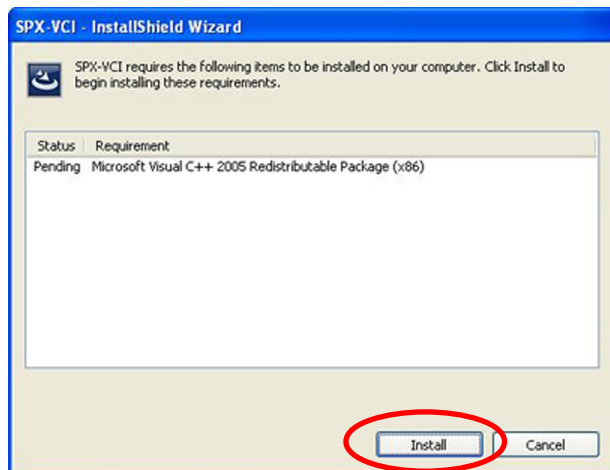
(your CD drive):\setup.exe

Example: D:\setup.exe

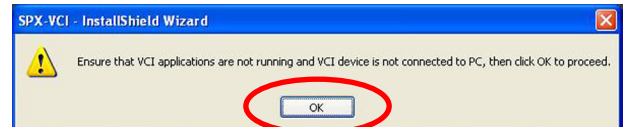
3. Select a language from the list of choices offered in the drop down menu. Click **OK**.



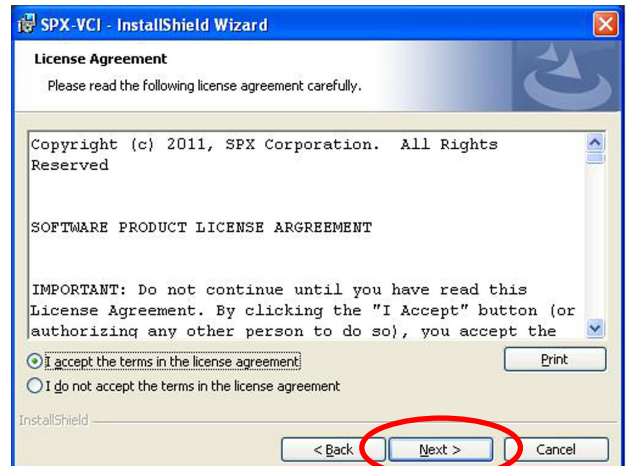
4. If Microsoft Visual C++ 2005 Redistributable package has not been installed on the PC previously a prompt to install it now opens. Click **Install**.



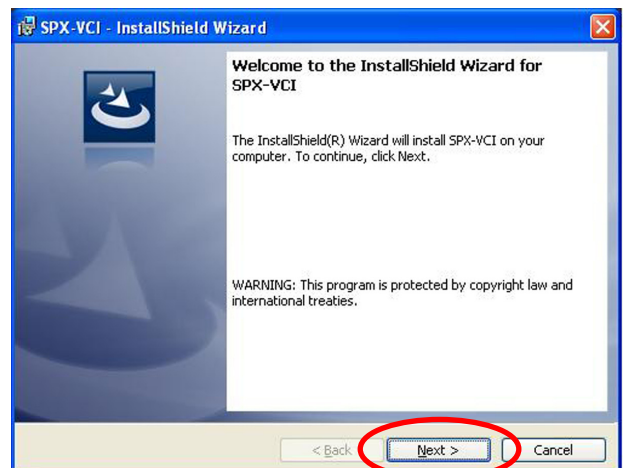
5. A prompt to ensure that VCI applications are not running and the VCI is not connected to a PC is shown. When confirmed, click **OK**.



6. Read the Software Product License Agreement that appears. Select the "I accept the terms in the license agreement" choice and click **Next**.



7. At the Welcome screen, click **Next**.

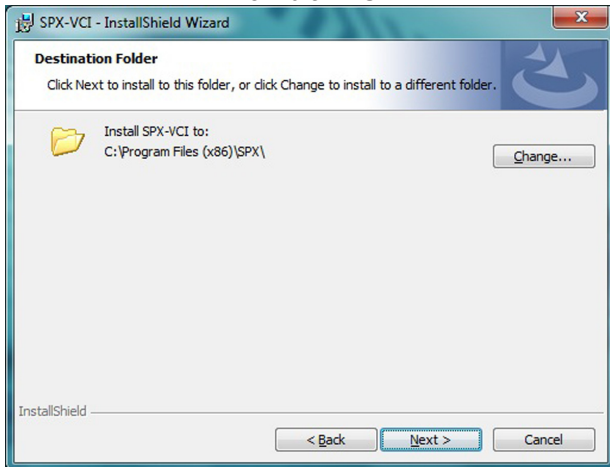


8. Choose where the files should install to. Click **Next** if the location shown is correct; click **Change** if the location needs to change.

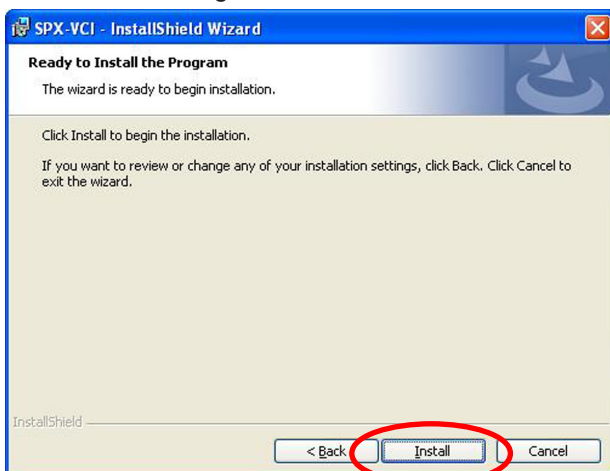
32-bit PCs



64-bit PCs



9. Click **Install** to begin the installation.



10. A warning appears, however, certification of this software is in process and it is safe to click **Continue Anyway**.



11. When prompted the installation was successfully completed, click **Finish** to exit

