



655 Eisenhower Drive
 Owatonna, MN 55060 USA
 Phone: (507) 455-7000
 Tech. Serv.: (800) 533-6127
 Fax: (800) 955-8329
 Order Entry: (800) 533-6127
 Fax: (800) 283-8665
 International Sales: (507) 455-7223
 Fax: (507) 455-7063

**Parts List &
 Operating Instructions
 for:**

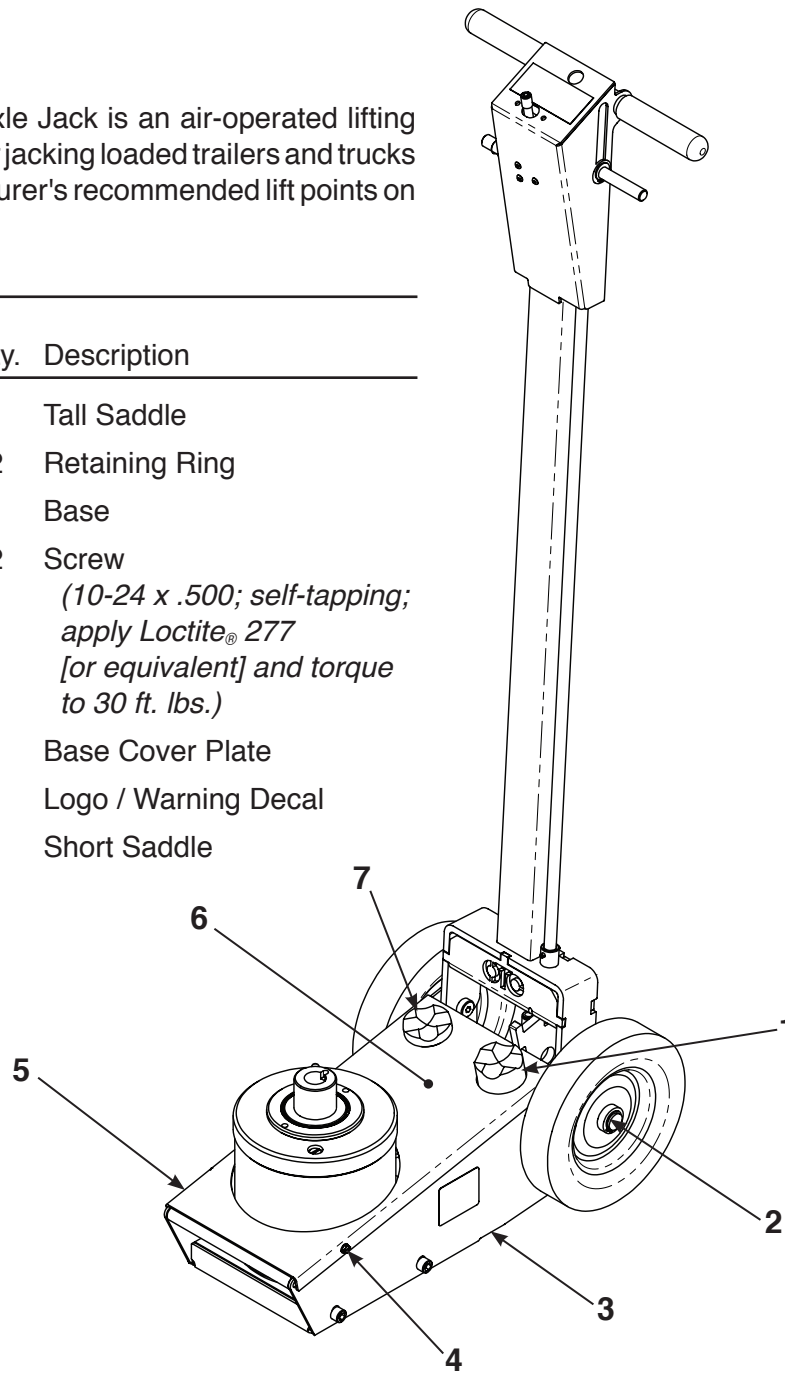
5292

Under Axle Jack

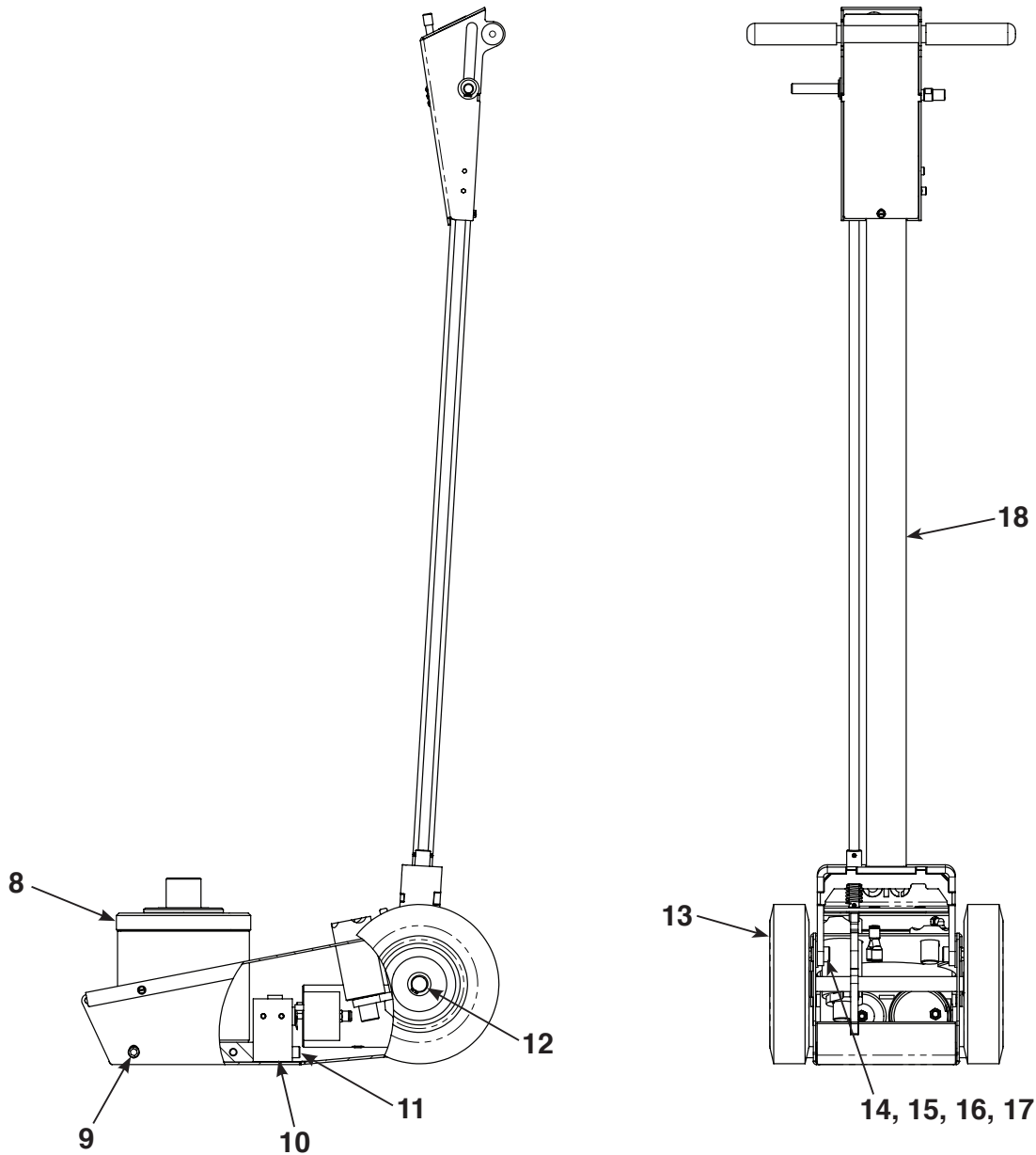
Max. Capacity: 27.5 Tons

No. 5292 Under Axle Jack is an air-operated lifting device designed for jacking loaded trailers and trucks using the manufacturer's recommended lift points on the chassis.

Item No.	Part No.	Qty.	Description
1	★	1	Tall Saddle
2	★	2	Retaining Ring
3	542068	1	Base
4	14456	2	Screw (10-24 x .500; self-tapping; apply Loctite® 277 [or equivalent] and torque to 30 ft. lbs.)
5	542073	1	Base Cover Plate
6	★	1	Logo / Warning Decal
7	★	1	Short Saddle



Items marked with a star (★) are contained in replacement parts kits. See sheet 3 of 5, back.



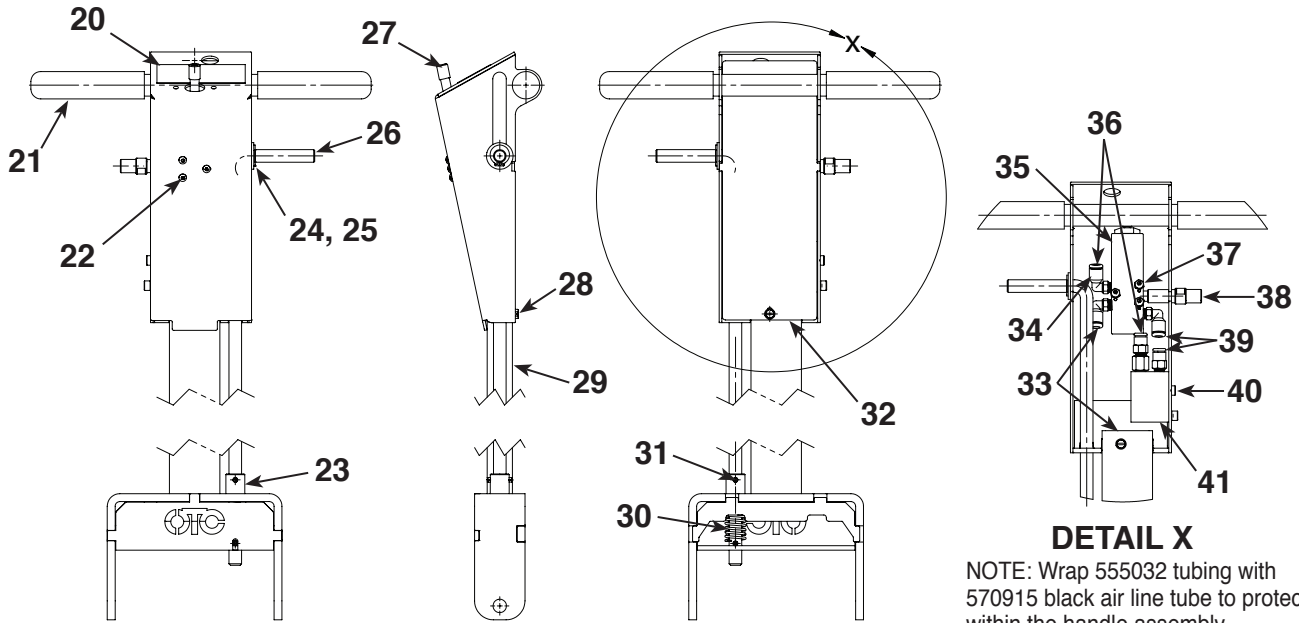
Items marked with a star (★) are contained in replacement parts kits. See sheet 3 of 5, back.

Item No.	Part No.	Qty.	Description
8	542069	1	Hydraulic Assembly
9	★	4	Socket Hd. Cap Screw (.375-16; Apply Loctite® 277 [or equivalent] and torque to 30 ft. lbs.)
10	568052	1	Air Pump and Motor Assembly (Assembly includes o-rings; See parts list on sheet 3)
11	★	2	Socket Hd. Cap Screw (.375-16; Apply Loctite® 277 [or equivalent] and torque to 30 ft. lbs.)
12	★	2	External Retaining Ring

Item No.	Part No.	Qty.	Description
13	★	2	Wheel
14	★	2	Shoulder Bolt
15	★	4	Washer
16	★	2	Lockwasher (3/8)
17	★	2	Hex Nut (3/8-16)
18	570911	1	Handle Assembly (parts list on sheet 2)

Parts included but not shown
 554332 2 Warning Decal

No. 570911 Handle Assembly



DETAIL X

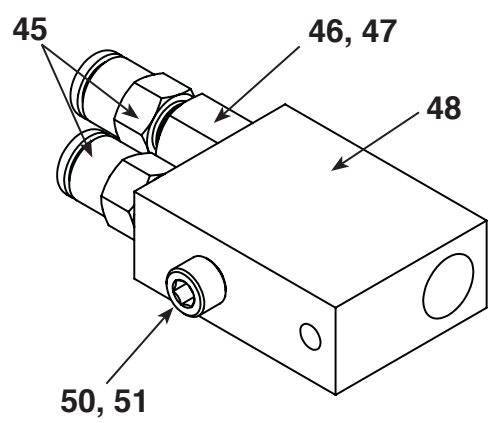
NOTE: Wrap 555032 tubing with 570915 black air line tube to protect it within the handle assembly.

Item No.	Part No.	Qty.	Description
20	554333	1	Control Decal
21	★	2	Handle Grip
22	★	3	Button Hd. Cap Screw (8-32)
23	563599	1	Handle Adapter Pin
24	★	1	Retaining Ring
25	★	1	Washer (1/2")
26	542070	1	Handle Lock Rod
27	570914	1	Air Switch Knob
28	★	1	Screw (10-24 x .500)
29	568399	1	Handle Weldment
30	★	1	Compression Spring
31	★	2	Roll Pin

Item No.	Part No.	Qty.	Description
32	542064	1	Cover Plate
33	555032	-	Tubing (1092 mm length)
34	★	3	Push-to-Connect Fitting
35	554112	1	Valve
36	555032	-	Tubing (235 mm length)
37	★	3	Locknut (M4 x .70)
38	★	1	Nipple (.250 NPT x .125 NPT)
39	★	-	Tubing (63.5 mm length)
40	★	1	Socket Hd. Cap Screw
41	553772	1	Vacuum Generator Assembly (see parts list below)

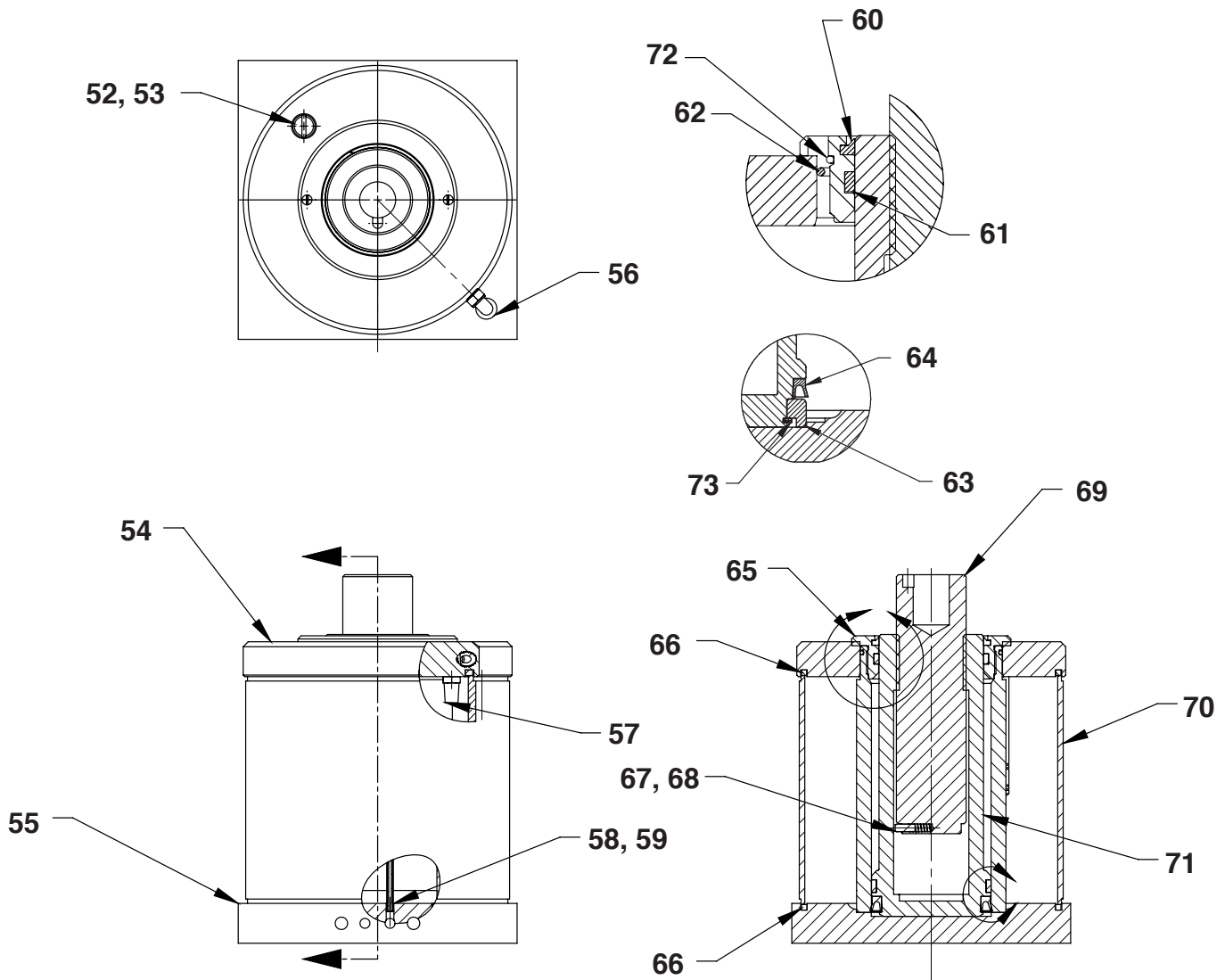
No. 553772 Vacuum Generator Assembly

Item No.	Part No.	Qty.	Description
45	554113	2	Push-to-Connect Fitting (8 mm)
46	566336	1	Venturi Nozzle
47	★	1	O-ring (nitrile)
48	566335	1	Venturi Valve Block
50	554114	1	Socket Head Cap Screw
51	★	1	O-ring (fluoroelastomer)



Items marked with a star (★) are contained in replacement parts kits. See sheet 3 of 5, back.

No. 542069 Hydraulic Assembly

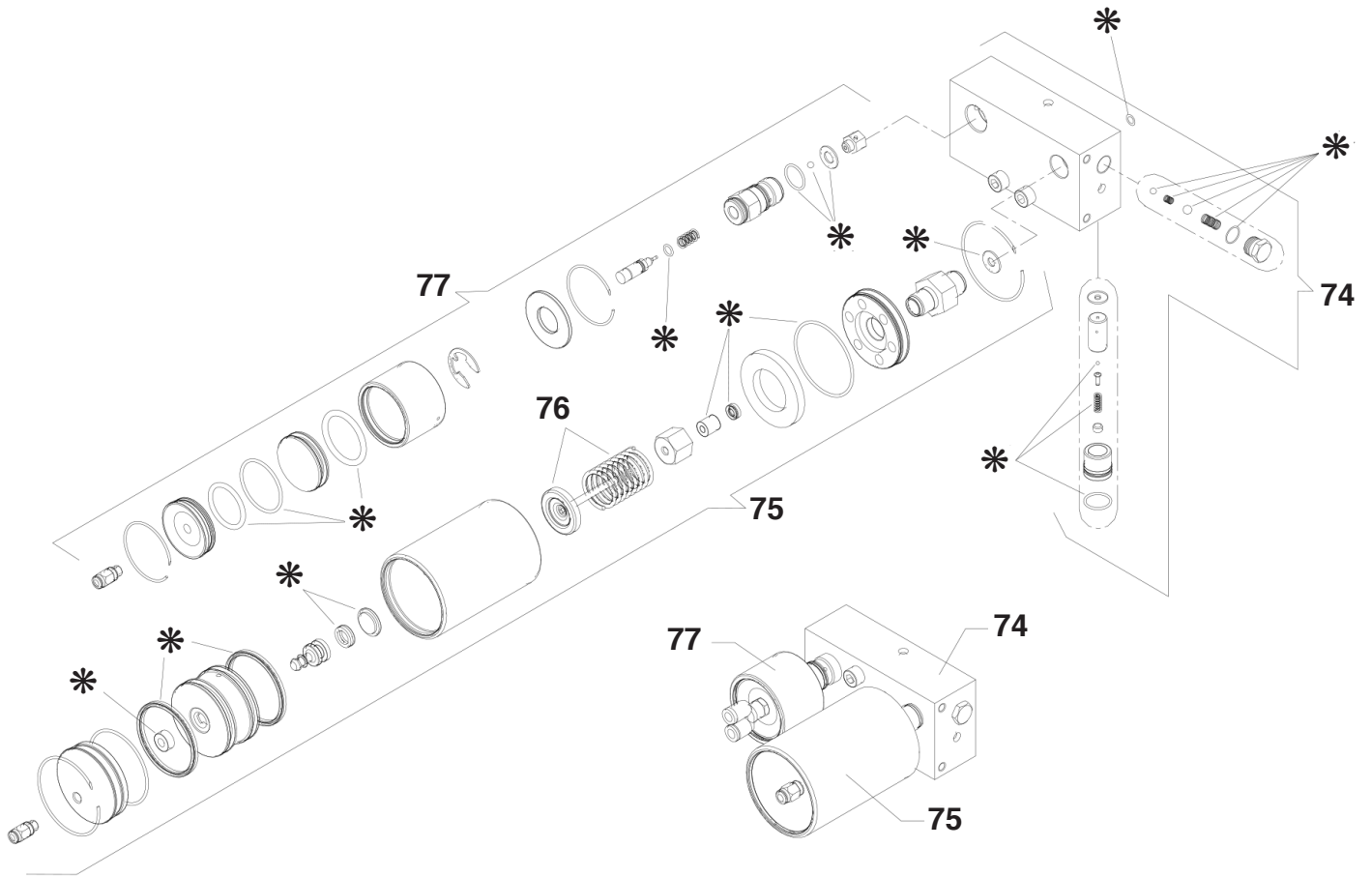


Item No.	Part No.	Qty.	Description
52	★	1	Fill Plug
53	★	1	O-ring
54	548124	1	Reservoir Cap
55	542080	1	Base
56	★	1	Push-to-Connect Fitting
57	★	1	Exhaust Muffler
58	★	1	Screen Filter
59	★	1	Filter Retainer
60	★	1	Seal
61	★	1	Wear Ring
62	★	1	O-ring
63	558437	1	Piston Wear Ring
64	★	1	U-cup

Item No.	Part No.	Qty.	Description
65	566495	1	Gland Nut <i>(torque to 100 ft-lbs)</i>
66	★	2	Seal
67	★	1	Spring
68	★	1	Dowel Pin
69	542085	1	Extension Screw
70	548123	1	Reservoir Tube
71	542084	1	Piston
72	★	1	O-ring
73	★	1	External Retaining Ring

Items marked with a star (★) are contained in replacement parts kits. See sheet 3 of 5, back.

No. 568052 Air Motor Assembly



Item No.	Part No.	Description
74	555014	Block Assembly
75	555016	Air Motor
76	555017	Air Motor Plunger Assembly
77	572561	Release Valve
*	555018	Air Motor Seal Kit

Item No.	Qty.	Description
----------	------	-------------

**No. 563502
Fastener Kit**

9	4	Socket Hd. Cap Screw (.375-16)
11	2	Socket Hd. Cap Screw (Loctite®; torque to 30 ft.lbs.)
14	2	Shoulder Bolt
15	6	Washer
16	2	Lockwasher (3/8)
17	2	Hex Nut (3/8-16)
22	3	Button Hd. Cap Screw (8-32)
25	1	Washer (1/2 in.)
34	3	Screw (10-24 x .500)

**No. 563503
Handle Hardware Kit**

34	3	Push-to-Connect Fitting
37	3	Locknut (M4 x .70)
38	1	Nipple (.250 NPT x .125 NPT)
33	6.5 ft.	Tubing
36		
39		
40	1	Socket Hd. Cap Screw

Item No.	Qty.	Description
----------	------	-------------

**No. 563504
Handle Grip Kit**

21	2	Handle Grip
----	---	-------------

**No. 563505
Hardware Kit**

	1	Warning Decal
2	2	Retaining Ring
6	1	Logo / Warning Decal
24	1	Retaining Ring
30	1	Spring
31	2	Roll Pin
67	1	Spring
68	1	Dowel Pin
	1	Y-fitting

Item No.	Qty.	Description
----------	------	-------------

**No. 563506
Seal Repair Kit**

	2	O-ring
47	1	O-ring (nitrile)
51	1	O-ring (fluoroelastomer)
52	1	Fill Plug
53	1	O-ring
56	1	Push-to-Connect Fitting
57	1	Exhaust Muffler
58	1	Screen Filter
59	1	Filter Retainer
60	1	Seal
61	1	Wear Ring
62	1	O-ring
64	1	U-cup
66	2	Seal
72	1	O-ring
73	1	External Retaining Ring

**No. 563507
Saddle Kit**

1	1	Tall Saddle
7	1	Short Saddle

**No. 563508
Wheel Repair Kit**

12	2	Retaining Ring
13	2	Wheel

This document contains product parts lists as well as information regarding operation and maintenance. Items listed in the parts list have been carefully tested and selected by OTC.

Therefore: Use only OTC replacement parts.

Product questions may be directed to the OTC Technical Services Department at (800) 533-6127.



Get parts at OTCparts.com.

Assembly and Setup

1. Remove the wheels from the jack, leaving the spacer washers in place.
2. Using the hardware supplied, assemble the handle to the jack base.
3. Place the wheels back onto the wheel shaft. Verify the wheels do not rub on the frame and secure in place with a snap ring.
4. Connect the hoses as shown in Figure 1.

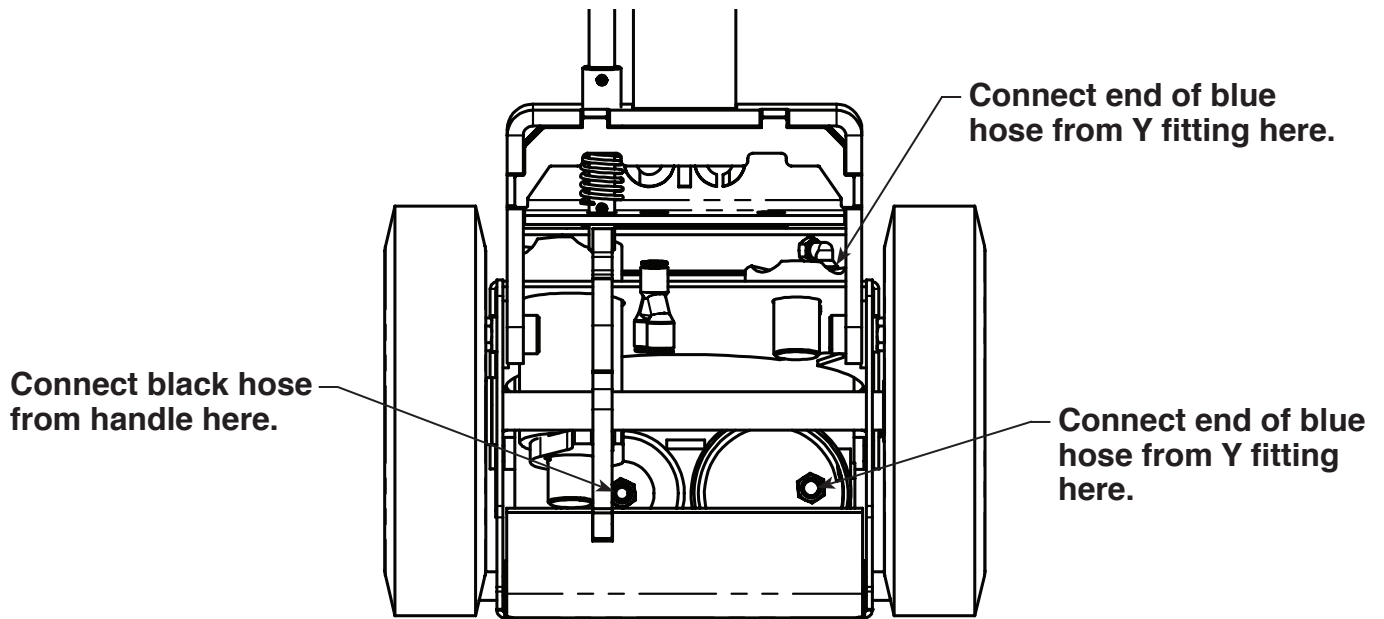


Figure 1
View from back of jack

5. Refer to Figure 2 and the following steps to connect the hydraulic assembly.
 - Locate the fitting on the hydraulic assembly.
 - Pull the fitting collar back and remove the pin.
 - Connect the blue hose from the air motor.

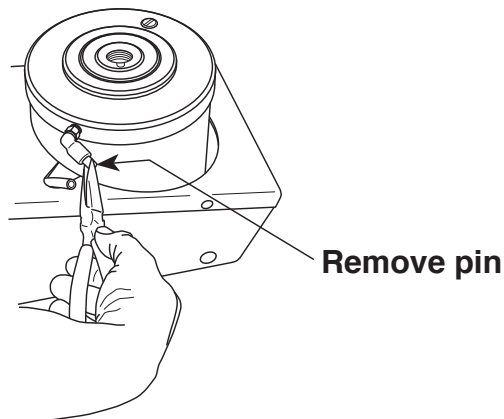


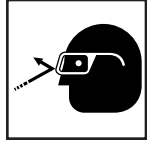



Figure 2

Safety Precautions

-  **CAUTION:** To prevent personal injury and damage to equipment,
- Study, understand, and follow all instructions before operating this device.
 - Wear protective eyewear that meets the requirements of ANSI Z87.1 and OSHA.
 - Do not exceed the rated capacity of the jack.
 - Use the jack only on a hard, level surface.
 - This jack is a lifting device only. Immediately after lifting, support the vehicle with appropriate means.
 - Do not move or dolly the vehicle while it is on the jack.
 - Lift only on areas of the vehicle as specified by the vehicle manufacturer.
 - No alterations shall be made to this product.
- 
- 
- 

Operating Instructions

1. Lubricate the air inlet on the jack with 1/2 oz. clean lubricating oil; lack of oil can cause pump malfunction.
2. Connect the air supply. (90 – 120 psi of clean, dry air is required for the capacity of this jack.)
3. Set the vehicle's parking brakes and / or block the wheels.
4. Position the jack under the vehicle at the vehicle manufacturer's recommended lifting point on the chassis.
5. Move the air valve lever to the right to raise the jack saddle until it touches the vehicle. Check the placement of the saddle lugs. Finish lifting the vehicle.
6. Place approved safety stands under the vehicle at points that will provide stable support. Before making repairs, lower the vehicle onto the safety stands by moving the air valve lever to the left to retract the cylinder. *Note: Keep the air supply attached to the jack.*

Bleeding Air from the Under Axle Jack

Air can accumulate within a hydraulic system during shipment or after prolonged use. This entrapped air causes the jack to respond slowly or feel "spongy." To remove the air:

1. Connect the air supply to the jack.
2. Move the air valve lever to the left until the cylinder is fully retracted.
3. Move the air valve lever to the right until the cylinder is fully extended.
4. Repeat steps 2 – 3 five or more times.

Preventive Maintenance

Important: The greatest single cause of failure in hydraulic units is dirt. Keep the under axle jack clean and well lubricated to prevent foreign matter from entering the system. If the jack has been exposed to rain, snow, sand, or grit, it must be cleaned before it is used.

1. Store the jack in a well-protected area where it will not be exposed to corrosive vapors, abrasive dust, or any other harmful elements.
2. Regularly lubricate the moving parts.
3. Replace the oil in the reservoir at least once per year. To check the oil level, disconnect the air supply, place the under axle jack on level ground, and completely retract the ram. Remove the filler plug / dipstick, wipe it clean, and reinstall it, threading it in all the way. Remove the dipstick again and note the oil level. The oil level should be between the two marks on the dipstick. Add or remove approved anti-wear hydraulic jack oil as needed, and install the dipstick. **CAUTION: The use of alcohol, hydraulic brake fluid, detergent motor oil, or transmission oil could damage the seals and result in jack failure.**
4. Inspect the jack before each use. Take corrective action if any of the following problems are found:

a. Cracked or damaged housing	d. Scored or damaged piston rod
b. Excessive wear, bending, or other damage	e. Loose hardware
c. Leaking hydraulic fluid	f. Modified or altered equipment

Troubleshooting Guide

Repair procedures must be performed in a dirt-free environment by qualified personnel who are familiar with this equipment.

Trouble	Cause	Solution
Erratic action	<ol style="list-style-type: none"> 1. Air in system. 2. Oil viscosity too high. 3. Internal leakage in cylinder. 4. Cylinder sticking or binding. 	<ol style="list-style-type: none"> 1. Follow the instructions in this document, "Bleeding Air from the Under Axle Jack". 2. Change to a lower viscosity oil. 3. Replace worn packings. Look for excessive contamination or wear. 4. Look for dirt, gummy deposits, or leaks. Check for misalignment, worn parts, or defective packings.
Jack does not lift	<ol style="list-style-type: none"> 1. Low / no oil in reservoir. 2. Air-locked system. 3. Load is above capacity of jack. 4. Delivery valve and / or bypass valve not working correctly. 5. Packing worn out or defective. 	<ol style="list-style-type: none"> 1. Fill with oil and bleed system. 2. Follow the instructions in this document, "Bleeding Air from the Under Axle Jack". 3. Use correct equipment. 4. Clean to remove dirt or foreign matter. Replace oil. 5. Replace power unit.
Jack lifts only partially	<ol style="list-style-type: none"> 1. Not enough oil. 	<ol style="list-style-type: none"> 1. Check oil level.
Jack advances slowly	<ol style="list-style-type: none"> 1. Low air pressure. 2. Seals are leaking. 3. Pump not working correctly. 	<ol style="list-style-type: none"> 1. Adjust air pressure to 90–175 psi. 2. Take jack to OTC authorized service center for repair. 3. Take jack to OTC authorized service center for repair.
Jack lifts load, but does not hold	<ol style="list-style-type: none"> 1. Cylinder packing is leaking. 2. Valve not working correctly (delivery, release, or bypass). 3. Air-locked system. 	<ol style="list-style-type: none"> 1. Replace seals. 2. Take jack to OTC authorized service center for repair. 3. Bleed system.
Jack leaks oil	<ol style="list-style-type: none"> 1. Worn or damaged seals. 	<ol style="list-style-type: none"> 1. Take jack to OTC authorized service center for repair.
Jack will not retract	<ol style="list-style-type: none"> 1. Release valve is closed. 	<ol style="list-style-type: none"> 1. Open or clean release valve.
Jack retracts slowly	<ol style="list-style-type: none"> 1. Cylinder damaged internally. 	<ol style="list-style-type: none"> 1. Take jack to OTC authorized service center for repair.
Sound of air leaking when lever is in retract position.	<ol style="list-style-type: none"> 1. This is normal. 	