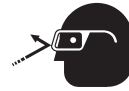




655 Eisenhower Drive  
 Owatonna, MN 55060 USA  
 Phone: (507) 455-7000  
 Tech. Serv.: (800) 533-6127  
 Fax: (800) 955-8329  
 Order Entry: (800) 533-6127  
 Fax: (800) 283-8665  
 International Sales: (507) 455-7223  
 Fax: (507) 455-7063

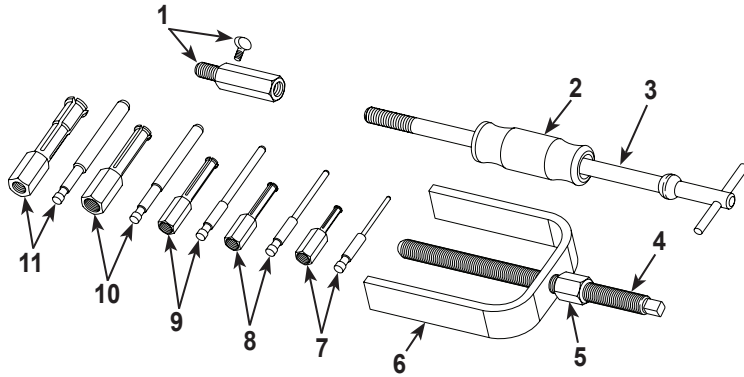
Form No. 574548

Parts List & Operating Instructions for: 6981



**CAUTION:** To prevent personal injury, wear eye protection that meets the standards of ANSI Z87.1 and OSHA.

## Blind-Hole Puller Set



### Parts List

Item No.	Part No.	No. Req'd	Description
1	577574	1	Pin Adapter & Thumb Screw
2	22185	1	Slide Hammer, 2.5 lb.
3	574018	1	Slide Hammer Rod
4	24835	1	Forcing Screw
5	24836	1	Forcing Screw Nut
6	41331	1	Bridge
7	577564	1	Pin, .140-in.
	577569	1	Collet, 5/16-in.
8	577565	1	Pin, .200-in.
	577570	1	Collet, 7/16-in.
9	577566	1	Pin, .280-in.
	577571	1	Collet, 1/2-in.
10	577567	1	Pin, .400-in.
	577572	1	Collet, 3/4-in.
11	577568	1	Pin, .500-in.
	577573	1	Collet, 1-in.

### Operating Instructions

- To remove a friction-fitted part from a blind hole, first measure the inside diameter of the component's bore/opening. Select the largest collet that fits inside the bore/opening.
- Slide the collet into the bore/opening until the lip on the end of the collet is under/behind the friction-fitted part. See Step 1, Figure 1.
- Select the pin paired with the collet and insert the notched end of the pin into the bottom of the pin adapter. Tighten the thumb screw on the adapter to lock the pin in place. See Step 2, Figure 1.
- Insert the tip of the pin into the collet and thread the pin adapter into the collet. Firmly tighten the pin adapter until the lip of the collet is tightly expanded and locked under/behind the friction-fitted part. See Step 3, Figure 1.
- Thread and tighten the end of the forcing screw/bridge assembly, or slide hammer, into the top of the pin adapter. See Figure 2. *Note: The pin adapter is designed to accept both 1/2- and 5/8-in. slide hammers.*

If using the slide hammer, work the hammer up and down until the friction-fitted part is extracted. If using the screw/bridge assembly, adjust the position of the forcing screw nut until it's tight against the bridge, hold the top of the forcing screw in place with one wrench, and turn the forcing screw nut clockwise with a second wrench until the friction-fitted part is extracted.

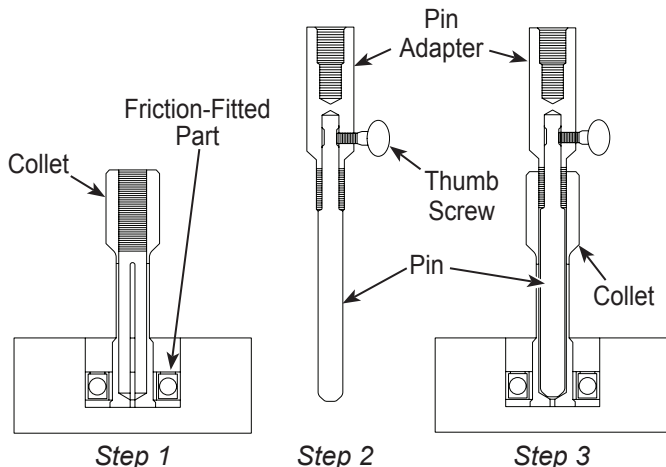


Figure 1

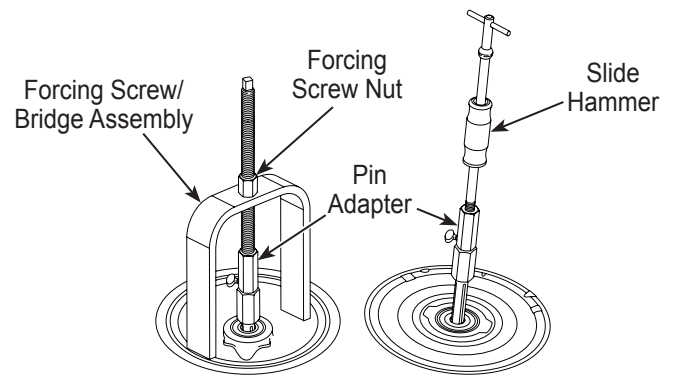


Figure 2