

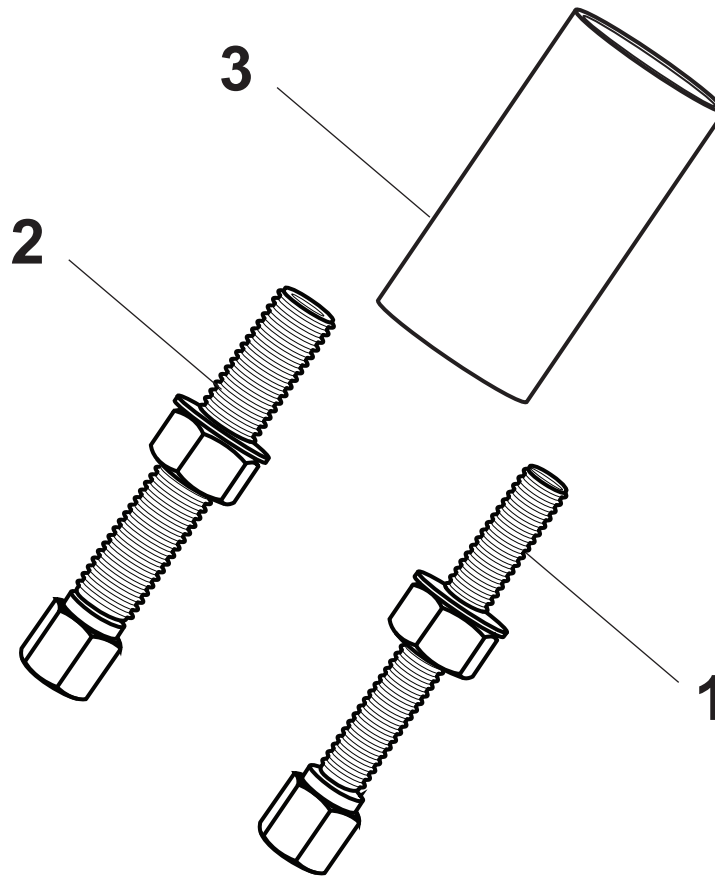


655 Eisenhower Drive
Owatonna, MN 55060 USA
Phone: (507) 455-7000
Tech. Serv.: (800) 533-6127
Fax: (800) 955-8329
Order Entry: (800) 533-6127
Fax: (800) 283-8665
International Sales: (507) 455-7223
Fax: (507) 455-7063

Form No. 581804

Parts List for: 6652

Subaru Ball Joint Adapter Kit



Item No.	Part No.	Description
1	581994	Forcing Screw
2	581995	Forcing Screw
3	581996	Receiver Cup

Page No. 1 of 4

Issue Date: Rev. A June 14, 2018


APPLICATIONS


Subaru


Model	Year	Type	Position	Location	Forcing Screw	Receiver Cup	Page
Baja	2003 – 2006	Truck	Lower	Front	581994 or 581995	581996	4
Crosstrek	2016	SUV	Lower	Front	581994 or 581995	581996	4
Forester	1998 – 2017	SUV	Lower	Front	581994 or 581995	581996	4
Impreza	1993 – 2015	Car	Lower	Front	581994 or 581995	581996	4
Legacy	1990 – 2017	Car	Lower	Front	581994 or 581995	581996	4
Outback	2000 – 2017	SUV	Lower	Front	581994 or 581995	581996	4
WXR	2015 – 2017	Car	Lower	Front	581994 or 581995	581996	4
XT	1988 – 1991	Car	Lower	Front	581994 or 581995	581996	4
XV	2013 – 2015	Car	Lower	Front	581994 or 581995	581996	4
B9 Tribeca	2006 – 2007	SUV	Lower	Front	581994 or 581995	581996	4
Tribeca	2008 – 2014	SUV	Lower	Front	581994 or 581995	581996	4

Explanation of Safety Signal Words

The safety signal word designates the degree or level of hazard seriousness.


 **DANGER:** Indicates an imminently hazardous situation which, if not avoided, will result in death or serious injury.

 **WARNING:** Indicates a potentially hazardous situation which, if not avoided, could result in death or serious injury.

 **CAUTION:** Indicates a potentially hazardous situation which, if not avoided, may result in minor or moderate injury.

CAUTION: Used without the safety alert symbol indicates a potentially hazardous situation which, if not avoided, may result in property damage.

Safety Precautions

 **WARNING:** To prevent personal injury and/or equipment damage,



- Wear protective eyewear that meets the requirements of ANSI Z87.1 and OSHA.
- Before performing any repairs on a vehicle, block all wheels to prevent movement.
- Clean and lubricate the forcing screw regularly.



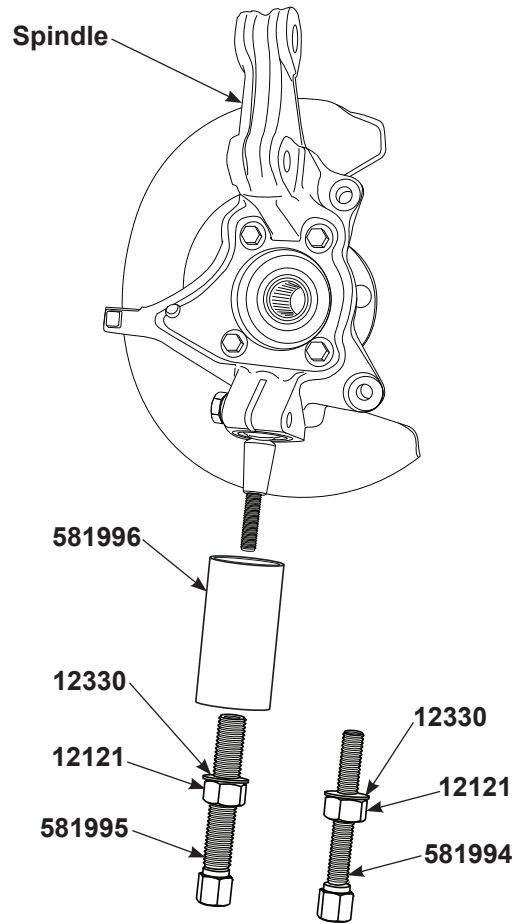
- Check the final alignment of tooling and components before exerting pressure with the forcing screw.
- Wrap the tooling and components with a protective blanket.

Ball Joint: Lower Front Inner

Note: No C-frame is used with this application.

Removal

1. Remove pinch bolt.
2. Determine the correct forcing screw to use for your application (581994 or 581995). The internal threads must match ball joint stud.
3. Add .750" washer (12330) to the forcing screw and install the receiver cup (581996).
4. Thread forcing screw onto the stud as far as possible.
5. Thread 3/4 - 10 UNC hex nut (12121) up to the receiver cup.
6. Hold forcing screw and turn hex nut (12121) to pull ball joint using appropriate tools.



Installation

1. Clean ball joint bore in the spindle.
2. Insert new ball joint as straight as possible into the spindle.
3. Tighten pinch bolt to the torque specs recommended for your application.

