

# Release Notes

## Version 2.10.0.14

### Overview:

The new version 2.10.0.14 contains major software improvements. Also provided are selected highlights of new features, fixed issues reported by technicians, and other improvements. You may notice many more in the software that are just too numerous to identify individually. Many thanks for the useful feedback we are receiving. More coverage and enhancements on the way!

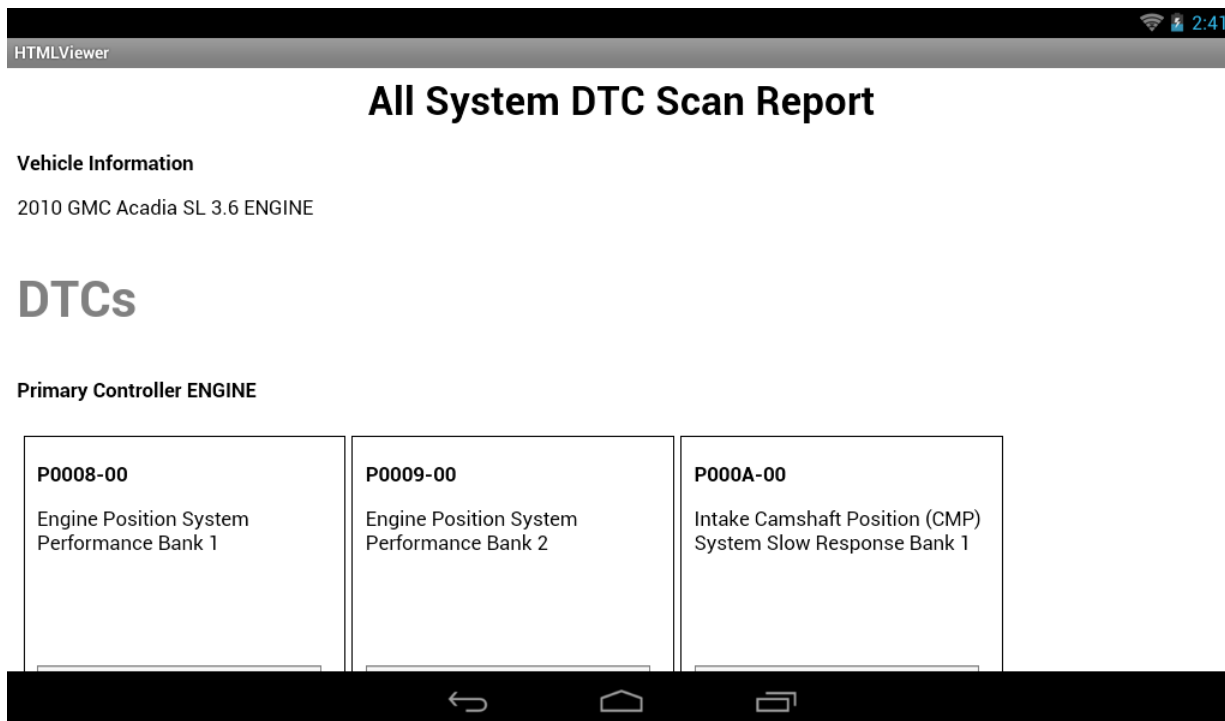
Some of the main software improvements include:

- Updated Report Layouts
- Printer Setup Improvements
- Additional Print Services
- All System DTC Clear
- Battery Tester App

### Updated Report Layouts

The reports have been updated to be made easier to read and print. Additionally, you will see that the date/time stamp are now included on all reports and in instances where the VIN is read, the VIN is also displayed. See the examples below.

*Before – All System DTC Scan Report*



*After – All System DTC Scan Report*

# ASDTC

Generated: 05/03/2017 04:59 PM

VEHICLE INFORMATION	
2010 GMC Acadia SL 3.6	
VIN	1GKLRKED5AJ999999
Primary Controller	ENGINE

reminder : only controllers with the same diagnostic connection type as the primary controller selected will be evaluated in this report. be aware that if vehicle has multiple diagnostic connections that then a different cable connection may be required to read certain controllers.

DTCS		
Primary Controller ENGINE		
P0008-00	Fail Since Clear	Engine Position System Performance Bank 1
P0009-00	Fail Since Clear	Engine Position System Performance Bank 2

Before – DTC Report

HTMLViewer1:59

## DTC Report

**Vehicle Information**

2010 GMC Acadia SL 3.6 ENGINE

<div><b>P0008-00</b> Engine Position System Performance Bank 1 <div>Fail Since Clear</div></div>	<div><b>P0009-00</b> Engine Position System Performance Bank 2 <div>Fail Since Clear</div></div>	<div><b>P000A-00</b> Intake Camshaft Position (CMP) System Slow Response Bank 1 <div>Fail Since Clear</div></div>
<div><b>P0008-00</b> Engine Position System Performance Bank 1</div>	<div><b>P0009-00</b> Engine Position System Performance Bank 2</div>	<div><b>P000A-00</b> Intake Camshaft Position (CMP) System Slow Response Bank 1</div>

After – DTC Report

HTMLViewer

5:27

## DTC REPORT

Generated: 05/03/2017 05:25 PM

### VEHICLE INFORMATION

**2010 GMC Acadia SL 3.6**

VIN	1GKLRKED5AJ999999
Primary Controller	ENGINE

### DTCS

Primary Controller ENGINE

P0008-00	Fail Since Clear	Engine Position System Performance Bank 1
P0009-00	Fail Since Clear	Engine Position System Performance Bank 2
P000A-00	Fail Since Clear	Intake Camshaft Position (CMP) System Slow Response Bank 1
P0008-00	MIL Codes	Engine Position System Performance Bank 1

In addition to the new updated Reports Layout, you will also see:

- Share button is added to many of the Global OBDII modes which will allow you to print, email or save your reports:

Current

Generic OBDII

5:44

Share

Menu

Generic OBDII

READINESS MODE 1

DATA STREAM MODE 1

FREEZE FRAME MODE 2

DTCs MODES 3, 4, 7, A

O2 SENSORS MODE 5

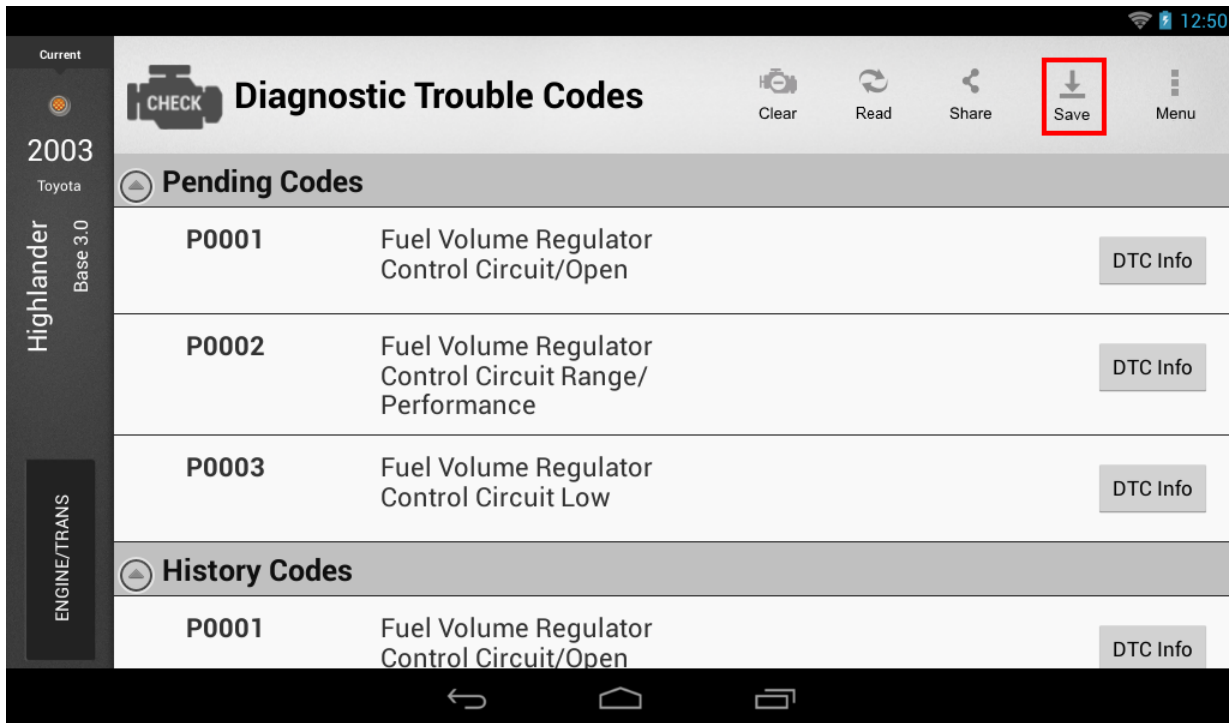
NON-CONTINUOUS TESTS MODE 6

SPECIAL TESTS MODE 8

### Readiness (Mode 1)

Monitor Description	Status
A/C System Refrigerant Monitor	Not Supported
EGR System Monitor	Ready
Catalyst Monitor	Ready
Heated Catalyst Monitor	Not Supported
Misfire Monitor	Ready

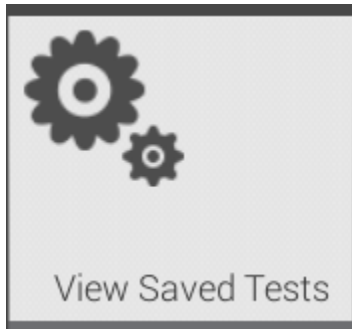
- Save button is added to DTC, All System DTC Scan and Automated System Test to let you save those reports for future viewing from the "View Saved Tests" Home tile:



- Clicking “Save” will display a message indicating the report was saved:

dtcScanReport-20170504125140.html report was saved. Please view under 'View Saved Tests' from Home screen

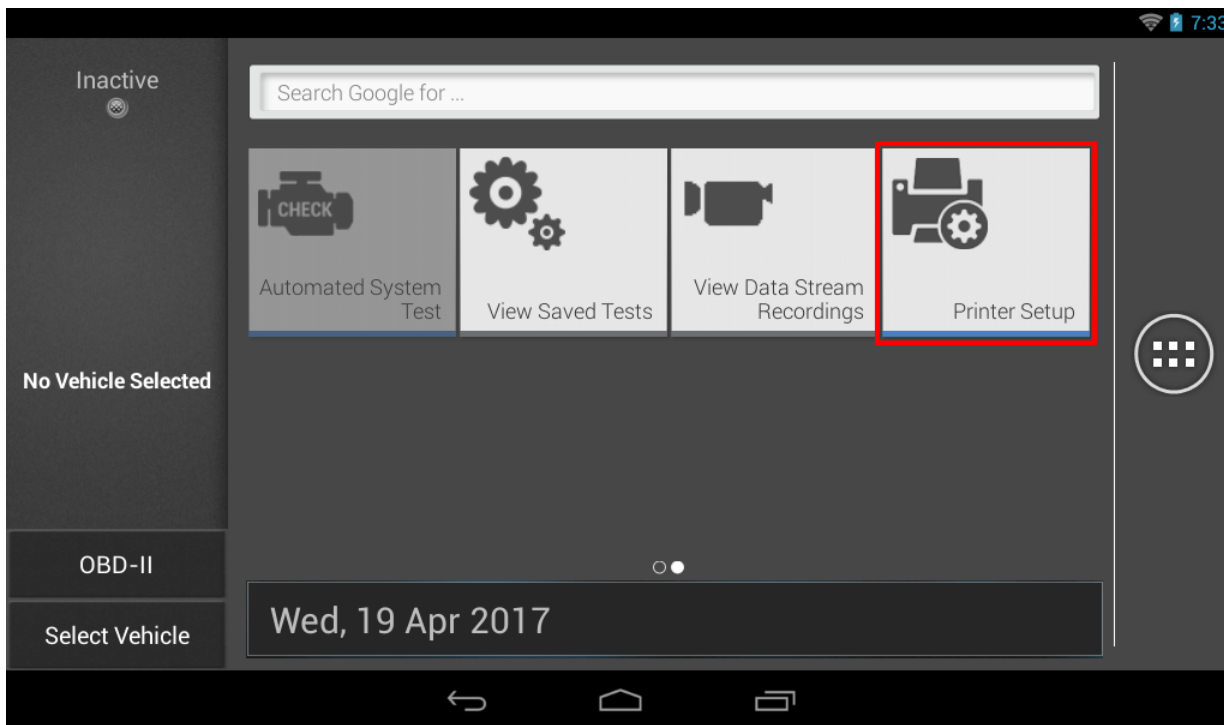
- You can access this file by tapping on the “View Saved Tests” tile on the Home Screen:



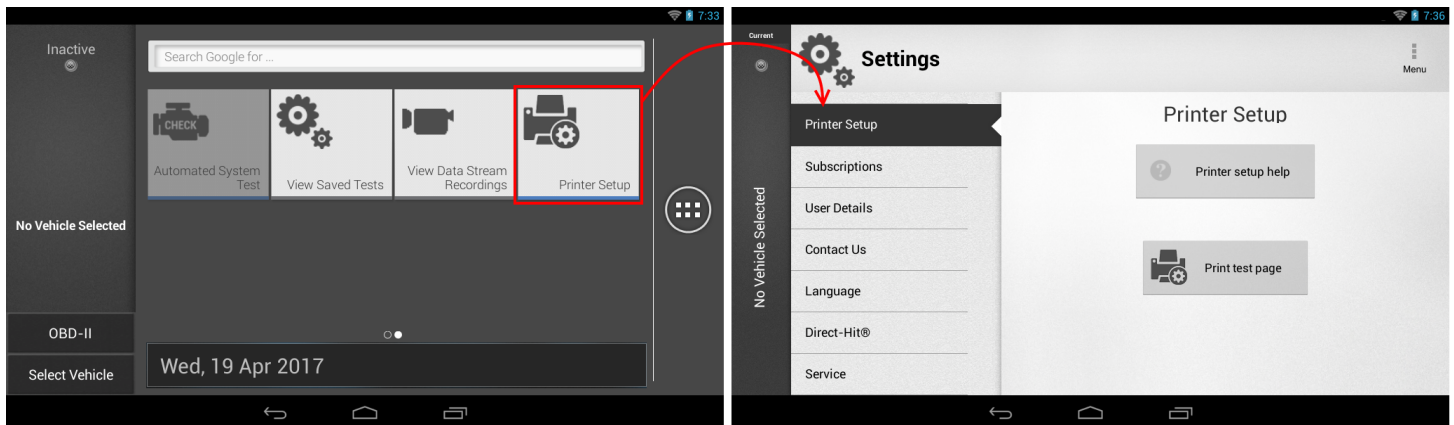
## ***Printer Setup Improvements***

There is now an in-tool option to initiate Printer Setup. This new “Printer Setup” screen is now available from the Home screen as a quick shortcut to the Settings module:

Home Screen:



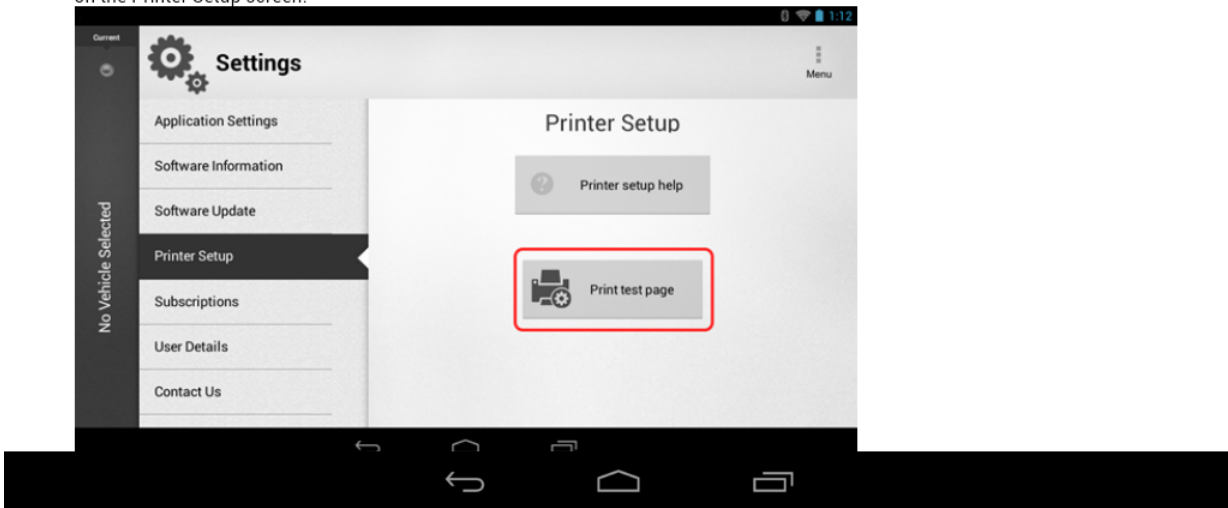
Home > Settings:



For more information on Printer Setup, tap on the “Printer setup help” button to launch a web browser with the steps necessary for assisting you in setting up your printer:

## To use Google Cloud Print from your Diagnostic Tool

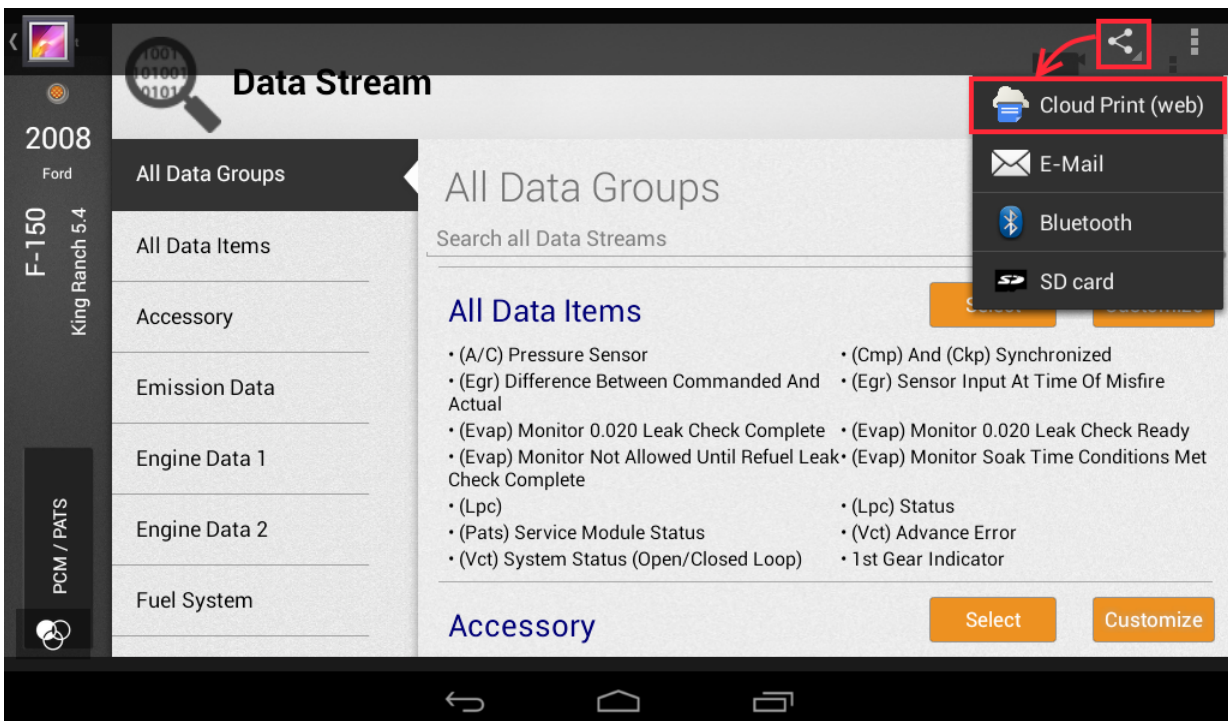
1. Ensure device is connected to internet and that network has unrestricted access to Google services. Tap on the "Print Test Page" button on the Printer Setup screen.



## Additional Print Services

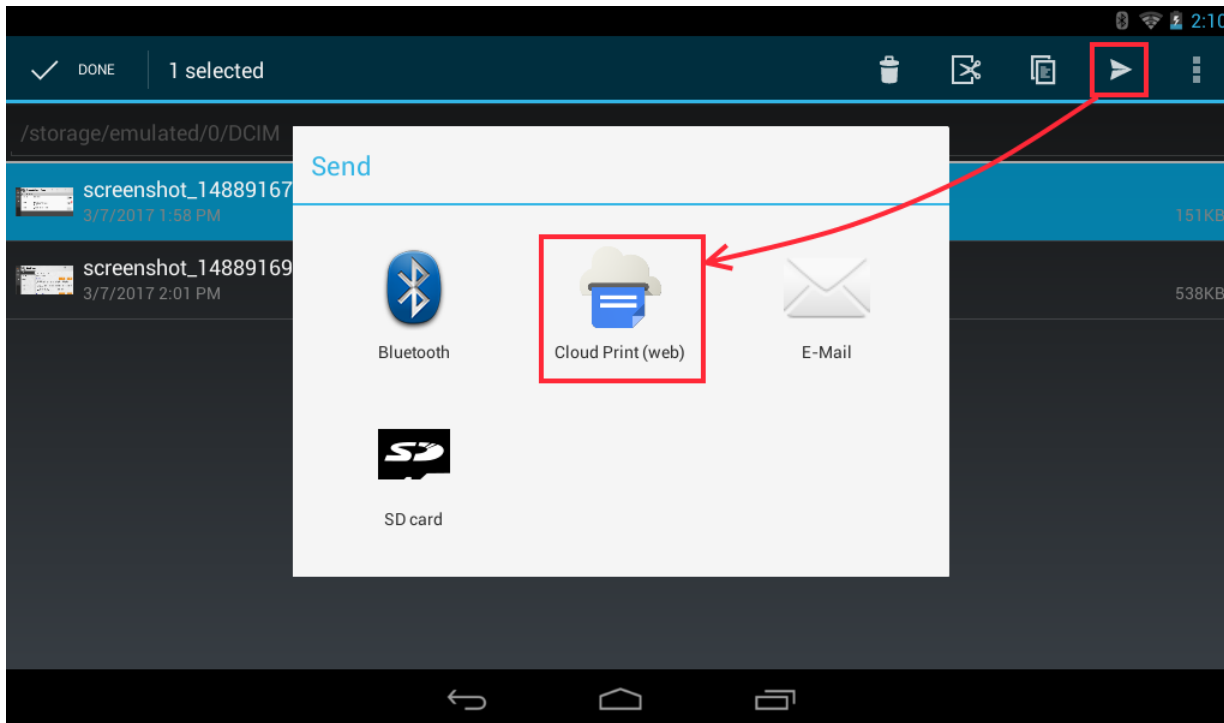
### Printing Screenshots

You can now print screenshots from within the Gallery by tapping on the "Share" icon and selecting "Cloud Print (web)":



### *Printing Saved or downloaded files*

You can also print downloaded PDF files, images or saved reports from within OI File Manager by long-pressing on the saved file and tapping on the “Share” icon and selecting “Cloud Print (web)”:

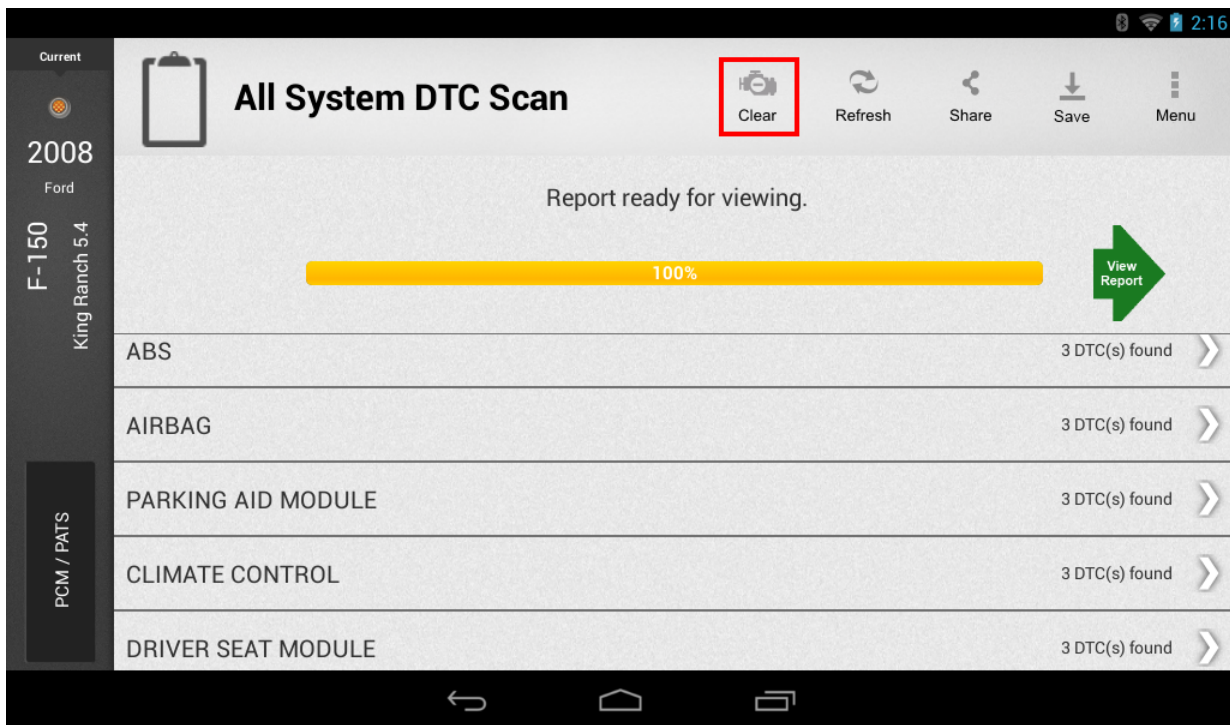


### ***All System DTC Clear***

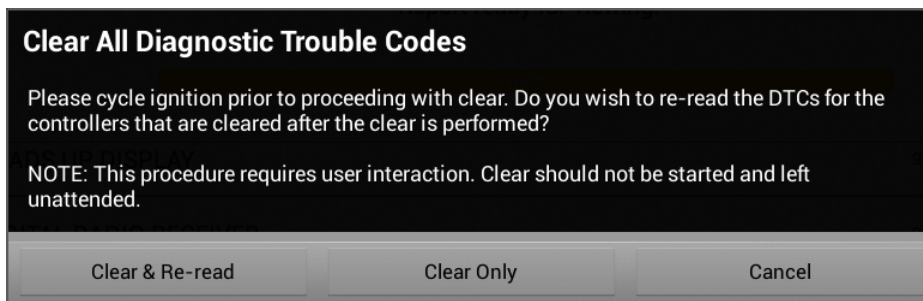
All System DTC Clear is now available after running an “All System DTC Scan” or “Automated System Test” so long as DTCs were found on any of the controllers scanned.

In this instance, a “Clear” button will be made visible on the Header bar:





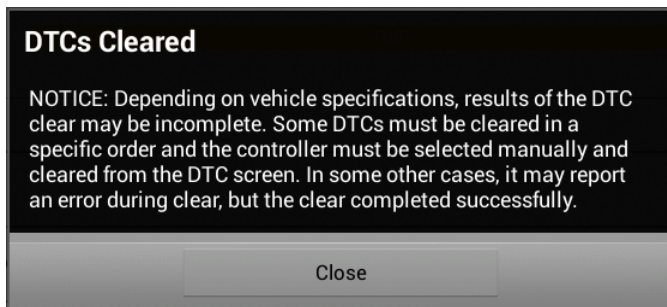
Tapping on the “Clear” button will bring up the following confirmation dialog:



- Tapping **Clear & Re-read** will send the Clear DTC command on the controllers with DTCs, and then immediately issue the Read DTC command on those controllers.
- Tapping **Clear Only** will send the Clear DTC command on the controllers with DTCs and report the results on the screen.
- Tapping **Cancel** will not perform the Clear DTC command.

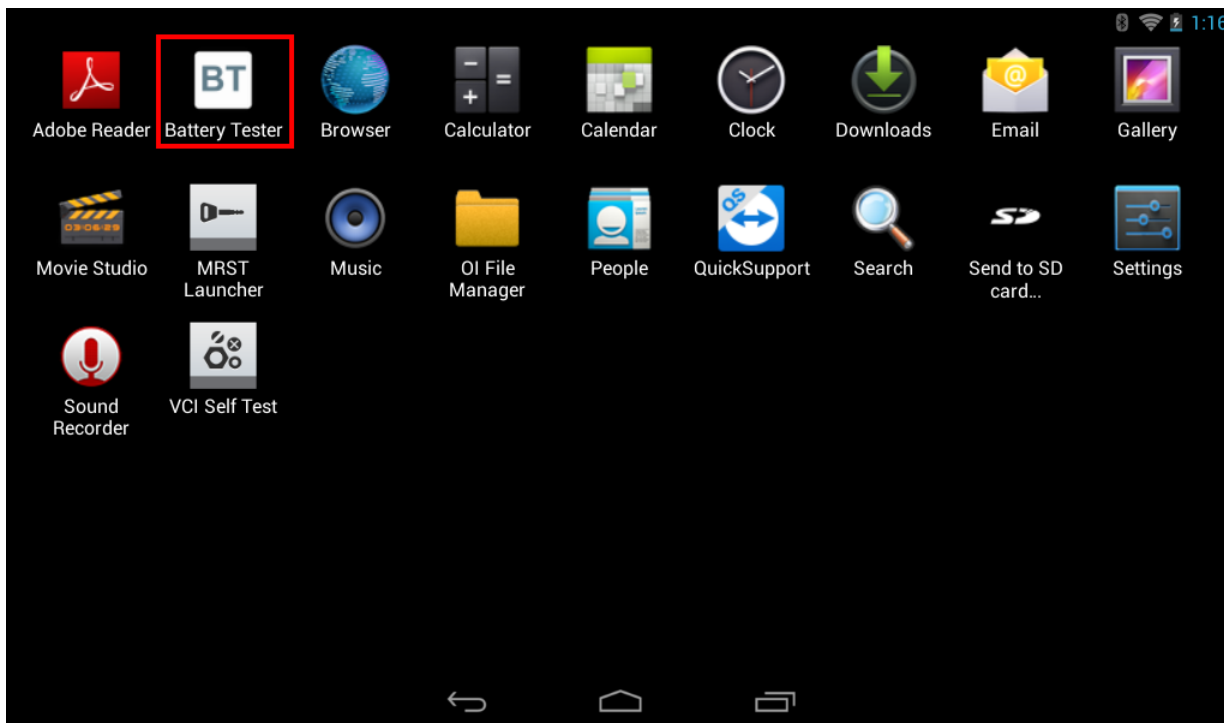
Upon completion of a DTC Clear, a warning dialog is shown to indicate that not all vehicles will honor the Clear DTC command on the specified controller and that additional steps may be required from the technician.



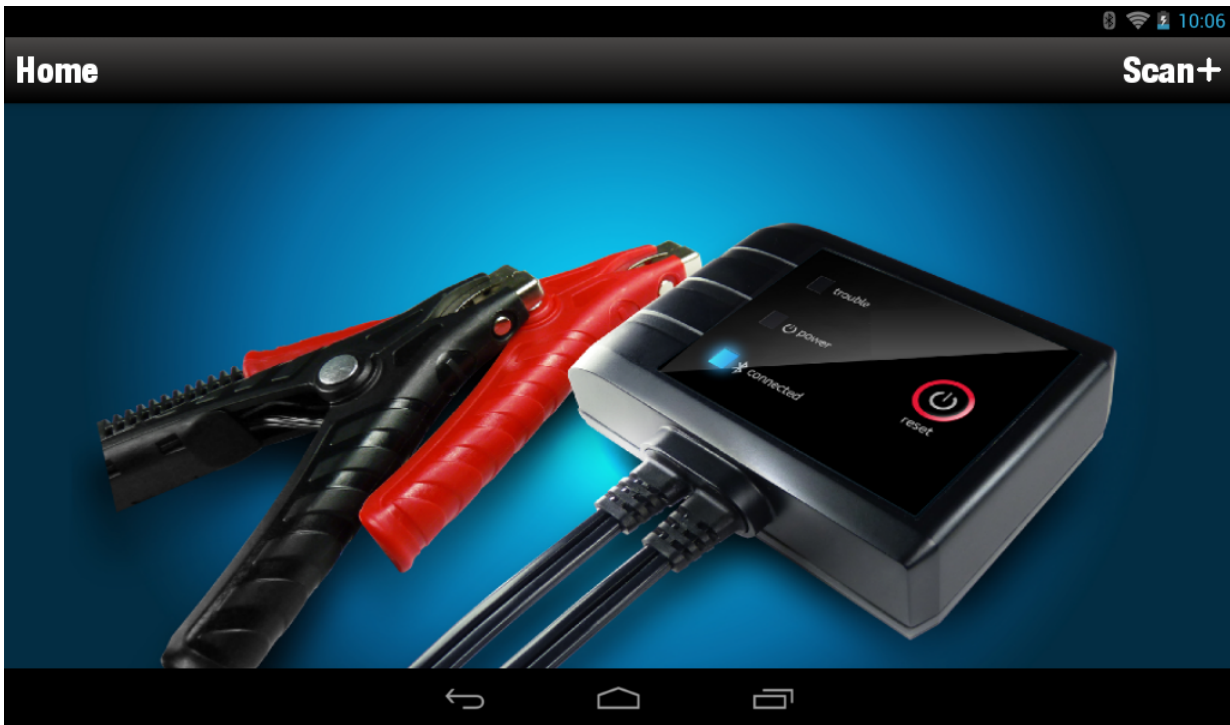


## ***Battery Tester App***

A Battery Tester Application is added in the “All Apps” menu as shown below:



The Battery Tester is shown below and can be purchased separately. <MKG update as needed>



## ***Other System Improvements***

### *Search by VIN screen*

There is a new Search by VIN entry screen available on the Vehicle Bay. Performs basic verification checks on your inputted VIN:

A screenshot of the 'SEARCH BY VIN' screen in the application. The screen has a dark background. At the top left, the text 'SEARCH BY VIN' is displayed. Below it is a white input field labeled 'VIN'. To the right of the input field, there are several vehicle models and years listed in a grid-like fashion, including '2010 GMC Acadia', '2009 Ford Focus', '2005 Ford F-150', '2003 Toyota', '2003 Volkswagen', '2014 Chevrolet', '2003 Toyota', '2003 Volkswagen', '2014 Chevrolet', '2003 Toyota', '2003 Volkswagen', '2014 Chevrolet'. Below the input field is a QWERTY keyboard with letters, numbers, and a backspace key. The keyboard is also dark-themed with white text.

### *Registration On-Boarding Process*

In order to ensure that the device's timestamp is the most accurate, there is a new screen for inputting the user's Time Zone:

# You've got the right tool!

Register my Device Now

Register my Device Later

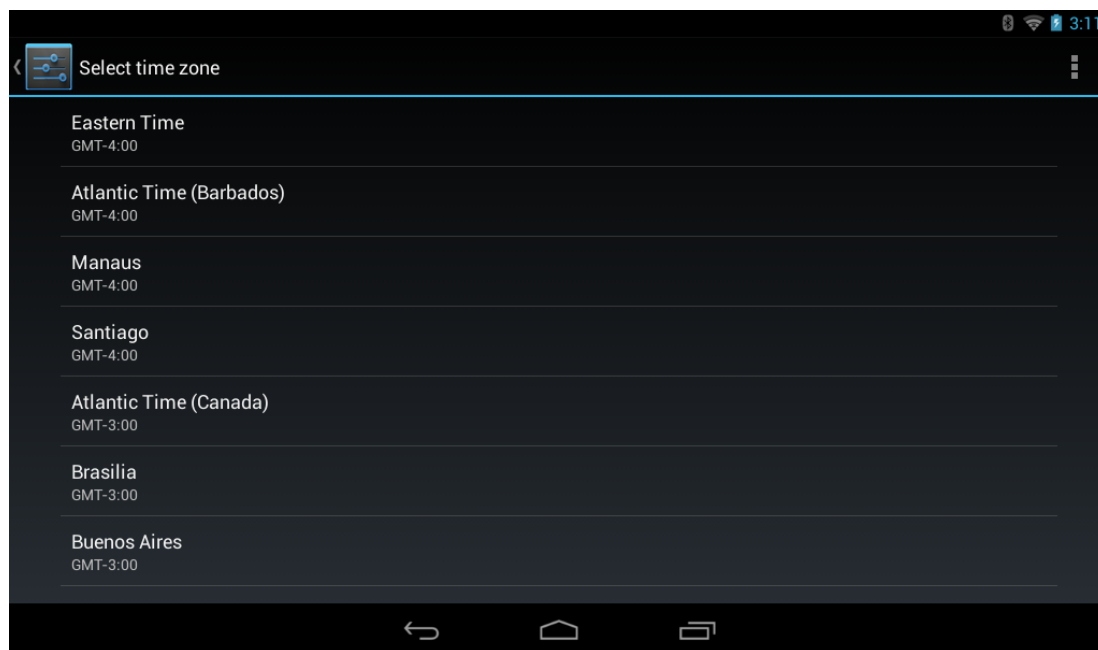
Demo Mode

## Setup Time Zone

GMT-04:00 Eastern Standard Time

Next: Setup Wi-Fi

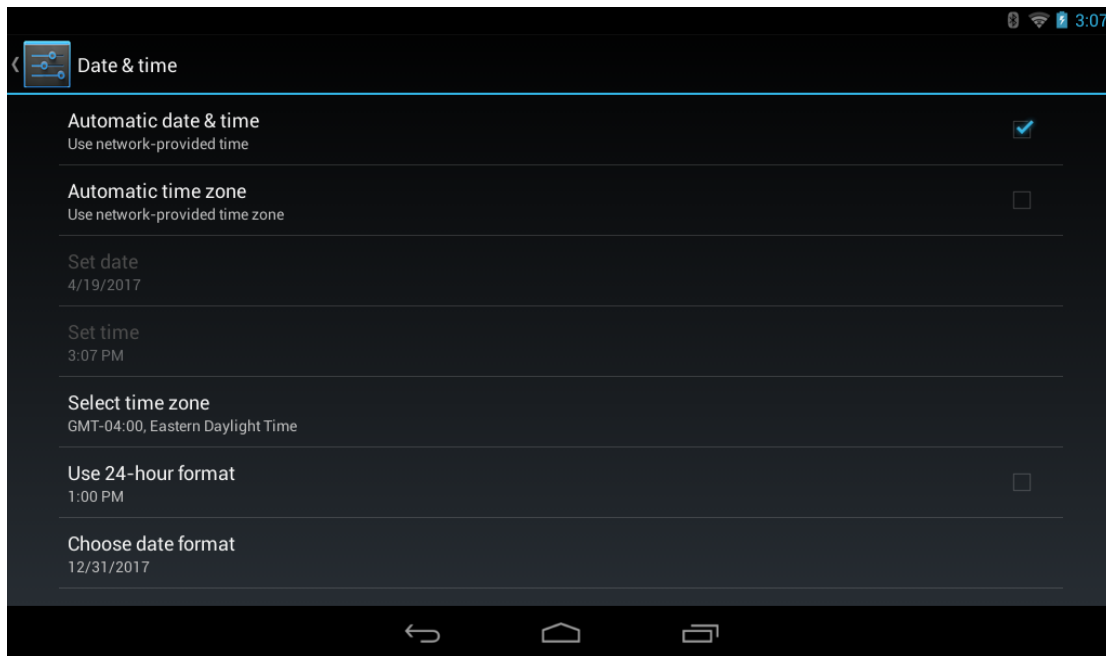
NOTE: For registered users, the time zone can be set in the “Date & Time” option in Android Settings by tapping on “Select time zone”:



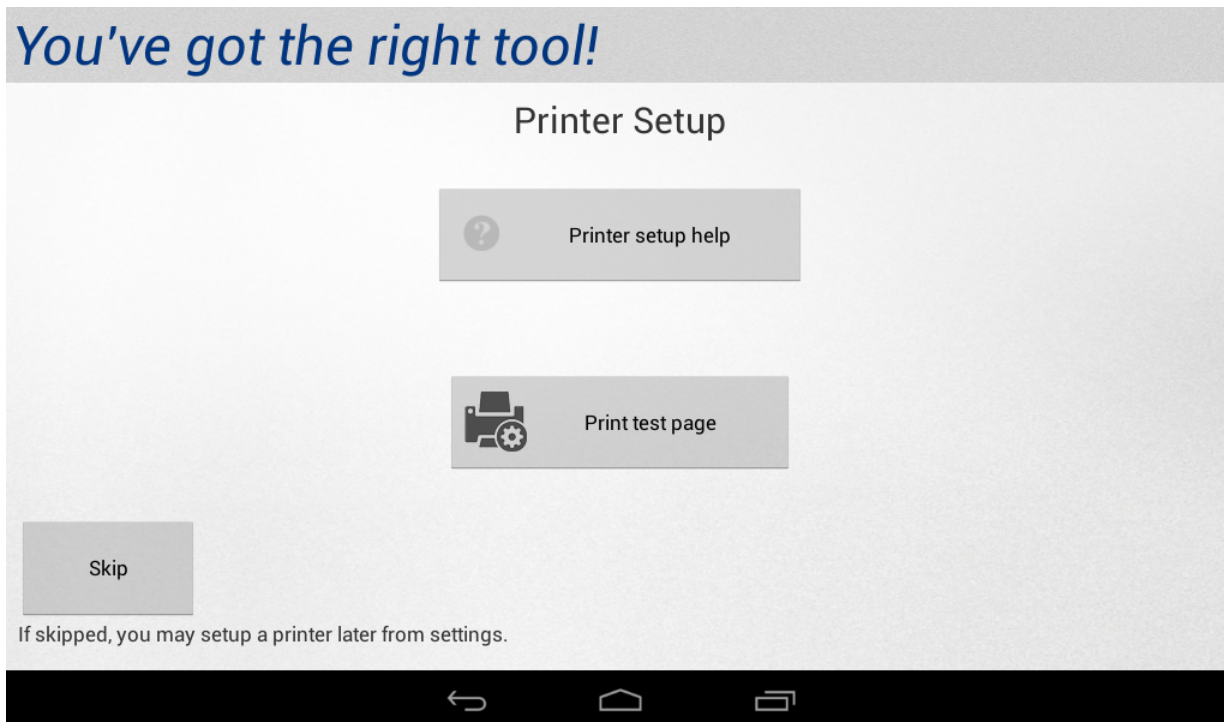
The recommended options for keeping your time and date accurate are to:

- 1) Use “Automatic date & time” settings.
- 2) Set your time zone to the correct time zone.

Shown below is “Eastern Daylight Time” and “Automatic date & time” ticked:



Additionally, the user will have an opportunity to setup their Printer immediately after registering their tool:



## ***New Vehicle Coverage***

- **Mercedes Benz** – New coverage for 2015MY vehicles and systems
- **Volkswagen/Audi** – New coverage for 2014-2015MY vehicles and systems
- **Volkswagen/Audi** – Expanded coverage for UDS protocol systems 2008-2013

- **Ford** – New coverage for Brake Pad Replacement test
- **Ford** – Expanded coverage for High Pressure Fuel System Test, Low Pressure Fuel Leakdown Test, MAF Sensor Contamination Test
- **TPMS** – Expanded coverage and improvements for Tire Pressure Sensor Registration for GM, Chrysler/Jeep, Nissan/Infiniti, Toyota/Lexus, Hyundai, Kia, Mazda, Mitsubishi, Subaru
- **New Systems** - 2,878
- **New Vehicle-ECU Combinations** – 11,891
- **New Adjustment type tests** – 217
- **New Actuation type tests** – 2,430
- **Updated Diagnostic Information for the following:**
  - Data Item Operating Ranges for 2015MY Mitsubishi
  - TPMS Quick Reference Information for GM, Mazda, Nissan, Toyota, Audi, Land Rover, Mercedes Benz and Volkswagen

## ***New Coverage – USA Domestic***

### ***Chrysler/Jeep Coverage***

#### **5 new Adjustment type special tests including:**

- **Engine/PCM** - Actuation Of Mixture Adaptation, Enable / Disable Vehicle Features, Snorkel Output Test

#### **1 new Actuation type special tests including:**

- **Instrument Cluster** - Vehicle Theft Alarm

#### **Special test fixes/improvements:**

- 2004 Ram ABS - fixed Set Pinion Factor not working properly for some tire sizes
- 2001 Dakota 5.9L ENGINE – fixed No CAM Sync test available

### ***Ford Coverage***

- New coverage for Brake Pad Replacement test
- Expanded coverage for High Pressure Fuel System Test, Low Pressure Fuel Leakdown Test, MAF Sensor Contamination Test

#### **5 new Adjustment type special tests including:**

- **Brakes/ABS** - Brake Fluid Replacement - Without Power Bleeder, Brake Pad Replacement, Brake System Actuation Control Unit Check, Brake System Air Bleed Check, Service Bleeding Including Brake Fluid Replacement

#### **31 new Actuation type special tests including:**

- **Engine/PCM** - DC to DC Converter Enable, Desired Engine Cooling Fan Speed, Engine Running Fuel Pressure Test, Heater Pump Control Relay, High Pressure Fuel System Test, Low Pressure Fuel Leakdown Test, MAF Sensor Contamination Test, Motor Electronics Coolant Pump
- **Instrument Cluster** - Voltmeter Pointer Placement Command
- **Others** - REMOTE FUNCTION ACTUATOR Passenger Door(s) Unlock

#### **Special test fixes/improvements:**

- 2006 Escape Hybrid ABS - fixed Would not perform ABS Bleed
- 2001 Expedition - fixed Could not reprogram keys

### ***General Motors / Saturn Coverage***

#### **26 new Adjustment type special tests including:**

- **Engine/PCM** - Ambient Air Temperature Calculation Reset, Oil Life Reset
- **Transmission** - Trans. Oil Life Reset
- **Brakes/ABS** - Automated Bleed, Automated Brake Bleed, Steering Wheel Angle Sensor Centering, Yaw Rate Sensor Recalibration
- **Tire Pressure Monitor/RCDLR** - Tire Pressure Sensor Registration, Tire Pressure Sensors Learn
- **Transfer Case** - Reset Clutch Overtemp Counter

- **Body Control** - Brake Pedal Position Sensor Calibration, CTD Operation, Door Lock Operation, Fob Feedback Preferences, Setup SDM Part Number In BCM
- **Others** – DIGITAL RADIO DRR Setup

**101 new Actuation type special tests including:**

- **Engine/PCM** - Auxiliary Coolant Pump Relay, Cylinder Power Balance, EGR Valve, EVAP Purge/Seal, Fuel Injector Balance, Fuel Pressure Control, Injector Enable/Disable
- **ABS/Parking Brake** - Disable Tim, Right Front Inlet Valve Solenoid
- **TPMS** - Tire Sensor Learn Information
- **Transfer Case** - Clutch Control, Clutch Coupling Request, Clutch Return
- **Climate/HVAC** - Blower Motor, Defrost Mode, Left Mix Motor, Mode Door Position, Right Mix Motor
- **Body Control** - Lamp and Buzzer/Warning tests, Headlight tests, Door Lock tests, Wiper/Washer tests
- **Seat** – MEMORY SEAT tests for Lumbar, Position and Recline

**Special test fixes/improvements:**

- 2013 Yukon XL 5.3L PCM – fixed no tests available
- 2013 Silverado 2500 6.6L PCM – fixed Reductant Heater tests not working properly
- 2012 Acadia 3.6L PCM – fixed Injector Balance test not working properly
- 2011 Traverse – fixed Passenger Presence Reset test not available
- 2010 Terrain 2.4L PCM – fixed Power Balance test not available
- 2009 Avalanche TRANSFER CASE – fixed Engage Front Axle test not working properly
- 2009 Vue 3.5/3.6L PCM – fixed Transmission Reset Adapts test not available
- 2008 Acadia 3.6L PCM - fixed EVAP tests not available
- 2008 CTS 3.6L PCM - fixed Idle Relearn test not available
- 2008 Suburban 5.3L PCM - fixed Fuel Composition test not available

**Updated Diagnostic Information for the following:**

- TPMS Quick Reference information

## ***New Coverage – USA Asian***

### ***Honda/Acura Coverage***

**8 new Adjustment type special tests including:**

- **Driver Assist** - Camera Aiming tests
- **Others** - Adaptive Cruise Control tests

**3 new Actuation type special tests including:**

- **Others** - INTEGRATED DRIVER ASSIST tests for ACC Indicator Light, ACC Relay, CMBS Brake

**Other fixes/improvements:**

- 2002 Civic ABS - fixed issue reading DTCs



## ***Hyundai Coverage***

### **19 new Adjustment type special tests including:**

- **Engine/PCM** - Auto Detected Configuration Reset, PCM Auto Detection Reset, Reset Adaptive Values, TEC learn, TPS Min Learnt Reset, VCM Learning, Write VIN
- **ABS** - Auto Detected Configuration Reset
- **Driver Assist** - Camera Aiming tests, BSD Radar Calibration

### **209 new Actuation type special tests including:**

- **Engine/PCM** – A/C Clutch and Compressor tests, Cam Phaser tests, EVAP tests, Change Oil Lamp, CKP CMP Signal Test, Cooling Fan tests, CVVT Test, ETC Motor, Fuel Pressure tests, Fuel Pump tests, Injector tests, Ignition Coil tests, O2 Sensor Heater tests, Oil Control Valve tests, Variable Intake Manifold tests
- **ABS/Brakes** - DBC/HAC Brake Lamp Relay, Electric Shuttle Valve, Inlet and Outlet Valve tests, Motor Test, TCS Valve tests
- **Electric Parking Brake** - Actuator Control Apply, Actuator Control Release, Lamp tests, Maintenance Mode Apply and Release tests
- **Others** - tests for PRESAFE SEAT BELT, ASSIST DOOR MODULE, SEAT LUMBAR BOLSTER, DRIVER DOOR MODULE

## ***Kia Coverage***

### **12 new Adjustment type special tests including:**

- **Engine/PCM** - Auto Detected Configuration Reset, PCM Auto Detection Reset, Reset Adaptive Values, TEC learn, VCM Learning, Write VIN
- **Driver Assist** - Camera Aiming tests

### **131 new Actuation type special tests including:**

- **Engine/PCM** – A/C Compressor tests, Cam Phaser tests, EVAP tests, Change Oil Lamp, CKP CMP Signal Test, Cooling Fan tests, CVVT Test, Cylinder Power Balance, ETC Motor, Fuel Pressure tests, Fuel Pump tests, Injector tests, Ignition Coil tests, O2 Sensor Heater tests, Oil Control Valve tests, Variable Intake Manifold tests
- **ABS/Brakes** - Inlet and Outlet Valve tests
- **Others** - tests for ASSIST DOOR MODULE, DRIVER DOOR MODULE

## ***Mazda Coverage***

### **5 new Adjustment type special tests including:**

- **Brakes/ABS** - Brake Fluid Replacement - Without Power Bleeder, Brake Pad Replacement, Brake System Actuation Control Unit Check, Brake System Air Bleed Check, Service Bleeding Including Brake Fluid Replacement

### **3 new Actuation type special tests including:**

- **Engine/PCM** - DC to DC Converter Enable, Heater Pump Control Relay, Motor Electronics Coolant Pump

### **Updated Diagnostic Information for the following:**

- TPMS Quick Reference information

## ***Mitsubishi Coverage***

### **3 new Adjustment type special tests including:**

- **TPMS** - Tire Pressure Sensor Registration
- **Instrument Cluster** - Maintenance Reset

### **Updated Diagnostic Information for the following:**

- Data Item Operating Ranges for 2015MY

## ***Nissan/Infiniti Coverage***

### **4 new Adjustment type special tests including:**

- **TPMS** - Tire Pressure Sensor Registration
- **Body** - Automatic Lock Setting, Door Lock/Unlock Setting, Room Lamp Timer Setting

### **46 new Actuation type special tests including:**

- **AWD/Transfer Case** – Left Solenoid, Right Solenoid
- **ABS/Brakes** - DAB Indicator Light, ECB Solenoid tests, Pre Crash Brake OFF Light, TPMS Warning Light
- **Suspension** – Active Trace Control Display tests, Brake Actuator tests, Master Warning Active
- **Body Control** - Lamp and Buzzer/Warning tests, Door Lock tests

### **Special test fixes/improvements:**

- 2008 Sentra TPMS - fixed TPMS Relearn not working properly

### **Updated Diagnostic Information for the following:**

- TPMS Quick Reference information

## ***Subaru Coverage***

### **1 new Adjustment type special tests including:**

- **TPMS** - Tire Pressure Sensor Registration

### **6 new Actuation type special tests including:**

- **Engine/PCM** - Activate the Starter Cut Relay, Fuel Pump Duty Control
- **Transmission** - Activate the Starter Cut Relay, Fuel Pump Duty Control
- **ABS** - ABS Solenoid, Sport Mode Lamp
- **Instrument Cluster/Meter** - VSC Indicator Lamp
- **Climate (HVAC)** - Inside and Outside Change

## ***Toyota/Lexus Coverage***

### **207 new Actuation type special tests including:**

- **Engine/PCM** – EGR tests, Fuel Pump tests, Fuel Pressure tests, ISC Step Position
- **ABS** – Lamp tests, ABS Solenoid, ECB Solenoid tests, Signal Check
- **Instrument Cluster** - Lamp tests, Buzzer tests
- **Climate (HVAC)** - Air Purifier Mode, Assist Fan, Batt Cool Down Servo Targ Pls, Inside and Outside Change
- **Suspension** - RR Solenoid 1, Signal Check, Stabilizer Check
- **Body Control** - Lamp and Buzzer/Warning tests, Mirror tests
- **Doors** - Door Lock/Unlock tests, Window tests, Mirror tests
- **Others** – SMART KEY tests

**Updated Diagnostic Information for the following:**

- TPMS Quick Reference information

## ***New Coverage – USA European***

### ***Audi Coverage***

- New coverage for 2014-2015MY vehicles and systems
- Expanded coverage for UDS protocol systems 2008-2013
- Added coverage for 1,319 new systems
- Added coverage for 5,839 new vehicle-ecu combinations

**59 new Adjustment type special tests including:**

- **Engine/PCM** - Boost Pressure Actuator Basic Adjustment, Camshaft Timing Control (B1) Inlet, Compressor Control Flap Basic Setting, Intake Camshaft Adjustment Bank 1, Lambda Sensor Ageing tests, Prime Fuel Pump, Throttle Valve Basic Setting
- **ABS/Brakes** - Brake Pad Replacement Step 1, Brake Pad Replacement Step 2, EMF Opening Mode Adjustment
- **AWD/Transfer Case** - Reset Adaption Value
- **Climate Control/HVAC** - Air Quality Sensor Adjustment, Auxiliary Heating Configuration Without CAN, Auxiliary Heating Continued Heating Time Setting, Basic Setting, Compressor Run-In Time Adaption, Front And Rear Control Motor Basic Settings, Front Left Seat Heating Memory Function Setting, Front Right Seat Heating Memory Function Setting, Reset All Counters, Write Configuration
- **Steering** - Reset Adaptation Parameters
- **Others** – PARK ASSIST Tone/Acoustic tests, Parking Aid Deactivation Speed, Write Configuration

**1,214 new Actuation type special tests including:**

- **Engine/PCM** - Actuator For Camshaft Adjustment, Air Condition Compressor Activation, All Radiator Cooling Fans, Camshaft Pos Actuator tests, Charge Motion Valve tests, Compression Test, Coolant tests, ECM/PCM Power Relay, EGR tests, EVAP tests, Fan Control tests, Fuel Injector tests, Fuel Pressure Regulator tests, Fuel Pump Relay, Gearbox Coolant Valve, Glow Plug Control Module 1, Idle Speed Adjustment, Injector tests, Oil Pressure Valve, SCR Heating tests, Secondary Air Injection tests, Turbo Charger Control Valve, Wastegate Solenoid
- **Hybrid** - Charging Connector A and B tests, Coolant Pump Control HV Battery, Cooling Valve 1 High Voltage Battery

- **Transmission** – Gear oil cooling valve, Open converter clutch, Shift Lock, Lock Solenoids for selector lever, Parking Lock Solenoid Test, Shift Lock Actuator Transversal Test, Shift Lock Solenoid Test
- **ABS/Brakes** – Lamp tests, ABS Return Pump Actuation, Attaching brake pads, Hydraulic Pump, Inlet and Outlet Valve tests, Parking brake motors, Wheel Speed Sensor Supply
- **Transfer Case** - Haldex Transmission Activation, Front Axle Torque Request Test
- **Suspension** - Accumulator Pressure Test, Compressor Relay, Damper tests, Lower Vehicle tests, Pressure Build-Up, Pressure Reduction
- **Instrument Cluster** - Lamp tests, Buzzer tests, Segment Test
- **Climate (HVAC)** - Air Condition Compressor Activation, Air Conditioner Performance Test, Flap Door tests, EMC mode flap control motors test, Seat Heater tests, Positioning Motor tests, Segment test
- **Body** – Lamp/Light tests, Window tests, Mirror tests, Door Lock tests
- **Doors** - Door Lock/Unlock tests, Window tests, Mirror tests
- **Others** – tests for ADAPTIVE CRUISE CONTROL, MULTICONTOUR SEAT, HEADLIGHT REGULATION, ACC/START AUTH (05), AMPLIFIER MODULE, RADIO (56), CAN GATEWAY (19), ELECTRONIC ROOF CONTROL

**Updated Diagnostic Information for the following:**

- TPMS Quick Reference information

## ***BMW/Mini Coverage***

**4 new Adjustment type special tests including:**

- **ABS/Brakes** – PARKING BRAKE Installation Mode Activate and Deactivate, Installation Mode
- **Climate (HVAC)** - Calibrate Stepper Motors
- **Other** – TAILGATE LIFT Activate/deactivate Transportation Mode

**62 new Actuation type special tests including:**

- **Engine/PCM** - Fuel Injector Off Test, VVT Tests
- **Climate (HVAC)** – AC Control Panel Button tests, Activate Compressor Clutch, Control the blower, Flap Motor tests, Illumination tests, Seat Heater Button tests

## ***Land Rover Coverage***

**1 new Actuation type special tests including:**

- **Body Control** - Passenger Door(s) Unlock

**Updated Diagnostic Information for the following:**

- TPMS Quick Reference information

## ***Mercedes Benz***

- New coverage for 2015MY vehicles and systems
- Added coverage for 535 new systems
- Added coverage for 4,642 new vehicle-ecu combinations

**15 new Adjustment type special tests including:**

- **Engine/PCM** - Actuation Of Mixture Adaptation, ECU Reset
- **Transmission** - ECU Reset
- **ABS/Brakes** - ECU Reset, Reset Steering Angle Calibration
- **Safety/Airbag** - ECU Reset
- **Suspension** - ECU Reset
- **Others** – DOOR CONTROL Adjust Mirror tests, ECU Reset

#### **112 new Actuation type special tests including:**

- **Engine/PCM** - Charge Air Cooler - Circulation Pump, Fuel Injector tests, Fuel Pump, Heating System Shutoff
- **ABS/Brake** – BAS Brake Assist Test, Solenoid Valve tests, Power Steering Solenoid Valve Test
- **Instrument Cluster** - Lamp tests, Buzzer tests, Segment Test
- **Climate (HVAC)** - Blower Motor
- **Suspension** - Central Accumulator Valve, Compressor Relay, Damping Valve tests, Raise / Lower Suspension tests, Single Amplifiers Drain Valve
- **Body Control** - Lamp and Buzzer/Warning tests
- **Doors** - Door Lock/Unlock tests, Window tests, Mirror tests
- **Others** – tests for PARKTRONIC, ELEC SEAT ADJ FR, BATTERY SENSOR, SYSTEM DIAGNOSIS

#### **Special test fixes/improvements:**

- 2007 ML350 DOOR/WINDOW - fixed Window Open/Close tests do not work properly
- 2007 ML350 DOOR/WINDOW - fixed No test available to perform de-normalization

#### **Other fixes/improvements:**

- 2002 C320 AIRBAG - fixed communication issues

#### **Updated Diagnostic Information for the following:**

- TPMS Quick Reference information

## **Smart**

#### **1 new Adjustment type special tests including:**

- **Safety/Airbag** - ECU Reset

## **Volkswagen Coverage**

- New coverage for 2014-2015MY vehicles and systems
- Expanded coverage for UDS protocol systems 2008-2013
- Added coverage for 1,024 new systems
- Added coverage for 1,410 new vehicle-ecu combinations

#### **49 new Adjustment type special tests including:**

- **Engine/PCM** - Lambda Sensor Ageing tests, Prime Fuel Pump, Throttle Valve Basic Setting
- **ABS/Brakes** - Brake Pad Replacement Step 1, Brake Pad Replacement Step 2
- **AWD/Transfer Case** - Reset Adaption Value

- **Climate Control/HVAC** - Air Quality Sensor Adjustment, Auxiliary Heating Configuration Without CAN, Auxiliary Heating Continued Heating Time Setting, Basic Setting, Compressor Run-In Time Adaption, Front And Rear Control Motor Basic Settings, Front Left Seat Heating Memory Function Setting, Front Right Seat Heating Memory Function Setting, Reset All Counters, Write Configuration
- **Steering** - Reset Adaptation Parameters
- **Others** – PARK ASSIST Tone/Acoustic tests, Parking Aid Deactivation Speed, Write Configuration

#### **501 new Actuation type special tests including:**

- **Engine/PCM** - Air Condition Compressor Activation, Camshaft Pos Actuator tests, Charge Motion Valve tests, Compression Test, Coolant tests, ECM/PCM Power Relay, EGR tests, EVAP tests, Fan Control tests, Fuel Injector tests, Fuel Pressure Regulator tests, Fuel Pump Relay, Gearbox Coolant Valve, Glow Plug Control Module 1, Injector tests, Oil Pressure Valve, SCR Heating tests, Secondary Air Injection tests, Turbo Charger Control Valve, Wastegate Solenoid
- **Hybrid** - Coolant Pump Control HV Battery, Cooling Valve 1 High Voltage Battery, Fan Control tests
- **Transmission** – Gear oil cooling valve, Open converter clutch, Shift Lock, Lock Solenoids for selector lever, Parking Lock Solenoid Test, Shift Lock Actuator Transversal Test, Shift Lock Solenoid Test
- **ABS/Brakes** – Lamp tests, Hydraulic Pump, Parking Brake tests
- **Transfer Case** - Haldex Transmission Activation
- **Suspension** - Damper tests, Pressure Reduction
- **Instrument Cluster** - Lamp tests, Buzzer tests, Segment Test
- **Climate (HVAC)** - Air Condition Compressor Activation, Air Conditioner Performance Test, Flap Door tests, EMC mode flap control motors test, Seat Heater tests, Positioning Motor tests, Segment test
- **Body** – Lamp/Light tests, Window tests, Mirror tests, Door Lock tests
- **Doors** - Door Lock/Unlock tests, Window tests, Mirror tests
- **Others** – tests for ADAPTIVE CRUISE CONTROL, HEADLIGHT REGULATION, ACC/START AUTH (05), AMPLIFIER MODULE, RADIO (56), CAN GATEWAY (19), ELECTRONIC ROOF CONTROL

#### **Other fixes/improvements:**

- 2004 Jetta RADIO - fixed issues reading DTCs

#### **Updated Diagnostic Information for the following:**

- TPMS Quick Reference information

***Thank you for your patronage!***