

Encore Release Notes

Version 2.5.0.8

Overview:

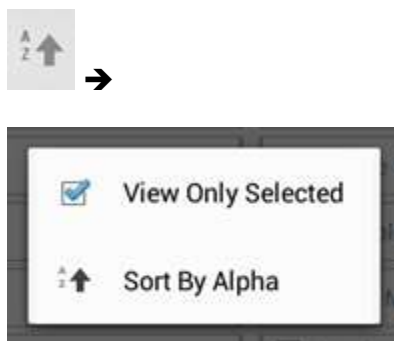
The new version 2.5.0.8 contains major software improvements. Also provided are selected highlights of new features, fixed issues reported by technicians, and other improvements. You may notice many more in the software that are just too numerous to identify individually. Many thanks for the useful feedback we are receiving. More coverage and enhancements on the way!

Data Stream

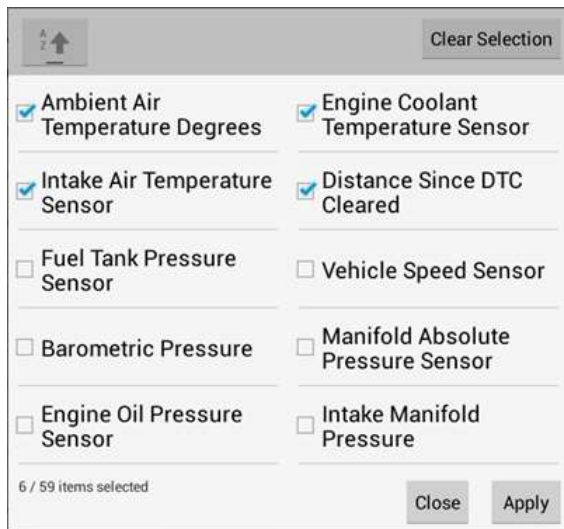
DataStream will default to a new List view which offers 16 Data Items on screen:

Data Stream		Engine Data			
<input type="checkbox"/>	Ambient Air Temperature Degrees	32 °F	<input type="checkbox"/>	Engine Coolant Temperature Sensor	-40 °F
<input type="checkbox"/>	Intake Air Temperature Sensor	-40 °F	<input type="checkbox"/>	Distance Since DTC Cleared	0 miles
<input type="checkbox"/>	Fuel Tank Pressure Sensor	-2.70 inH2O	<input type="checkbox"/>	Vehicle Speed Sensor	0 mph
<input type="checkbox"/>	Barometric Pressure	13 psi	<input type="checkbox"/>	Manifold Absolute Pressure Sensor	0 psi
<input type="checkbox"/>	Engine Oil Pressure Sensor	0 psi	<input type="checkbox"/>	Intake Manifold Pressure	0 psi
<input type="checkbox"/>	EVAP Purge Solenoid Command	0 %	<input type="checkbox"/>	Accelerator Pedal Position Indicated Angle	0 %
<input type="checkbox"/>	Short Term Fuel Trim Bank 1	0.0 %	<input type="checkbox"/>	Short Term Fuel Trim Bank 2	0.0 %
<input type="checkbox"/>	Throttle Position Indicated Angle	28 %	<input type="checkbox"/>	Engine Load	66 %

As is the case in other views, this view can be filtered utilizing the Sort button and selecting the “View Only Selected” option:

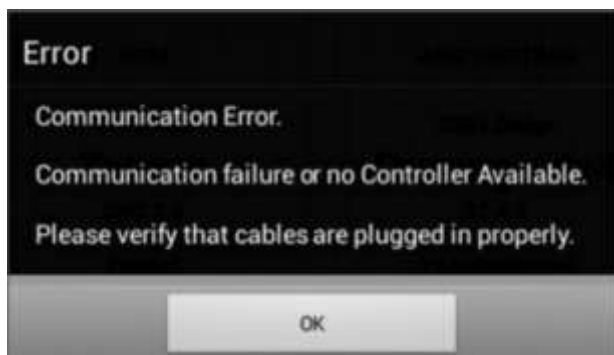


The custom Data Stream button can also be utilized in the same manner to filter items that are on different pages:

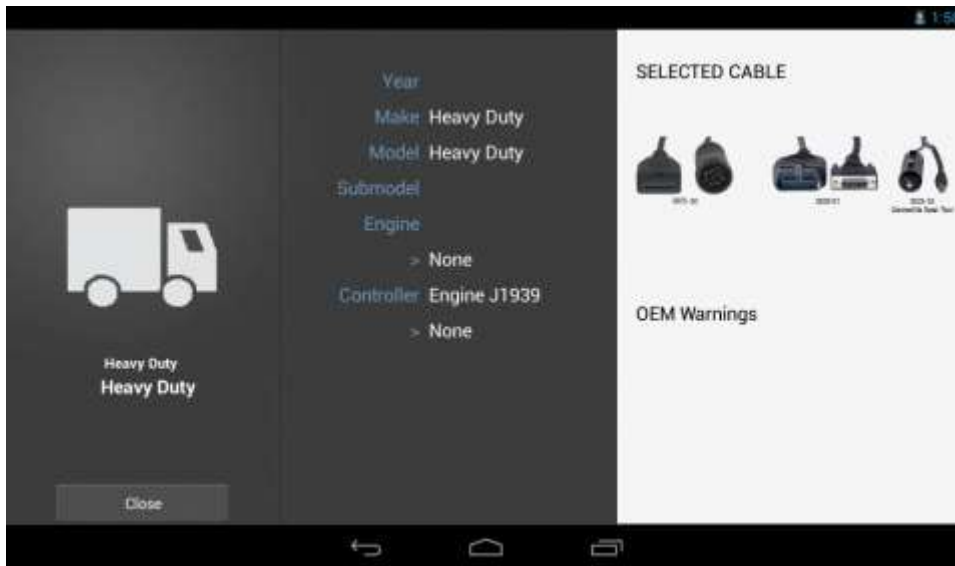


Heavy Duty

- Heavy Duty has been improved to properly display No Communications error messages to the user when applicable:



- The Vehicle Summary will now display the selected cable image for a Heavy Duty vehicle:

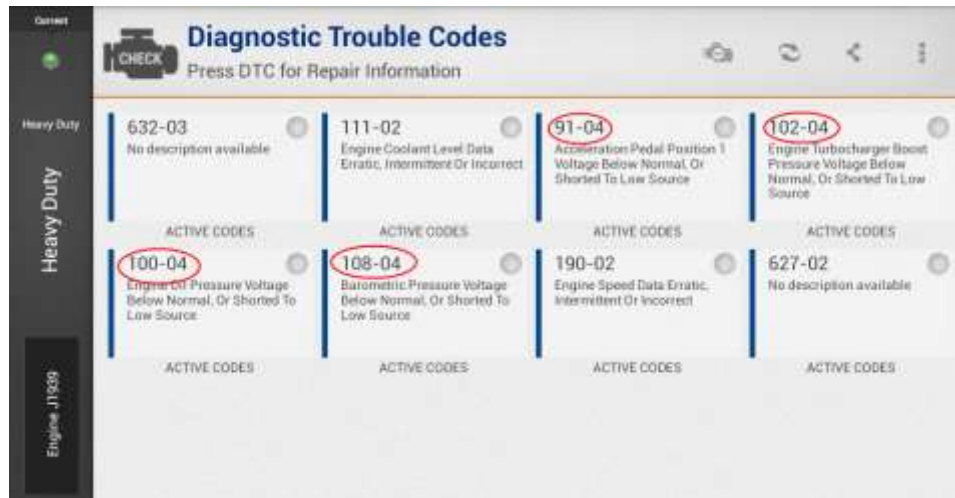


- Heavy Duty will now properly filter out controllers that are not available on the vehicle. In addition, J1939 controllers will now be properly re-scanned after an initial no communications condition.
- Heavy Duty fault codes will no longer be cut off in Heavy Duty:

Before:



After:



Global OBDII

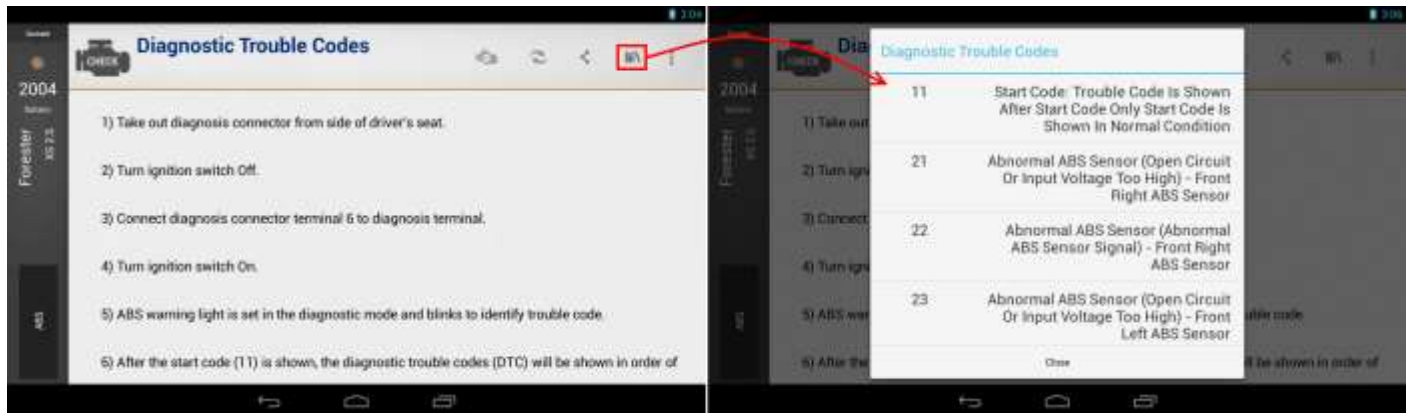
- OBDII Modes are now more reliable after multiple re-entries
- Improved availability in OBDII DataStream when multiple controllers are responding.
- Will now show accurate Mode 6 CIDs for a given TID on OBDII Keyword
- Updated units and conversions for CAN Mode 6 display.
- OBDII Mode 2 Freeze Frame speedup improvement by approximately 30%.

DTC

- DTC Status is now available for MY2011 and newer. The system will now only return the DTC Status on DTCs that are currently set on the controller instead of returning all possible DTCs:

Select DTC to view Status	
P0001	Fuel Volume Flow Regulator Control Circuit
P0002	Fuel Volume Flow Regulator Performance
P0003	Fuel Volume Flow Regulator Control Circuit Low Voltage
Close	

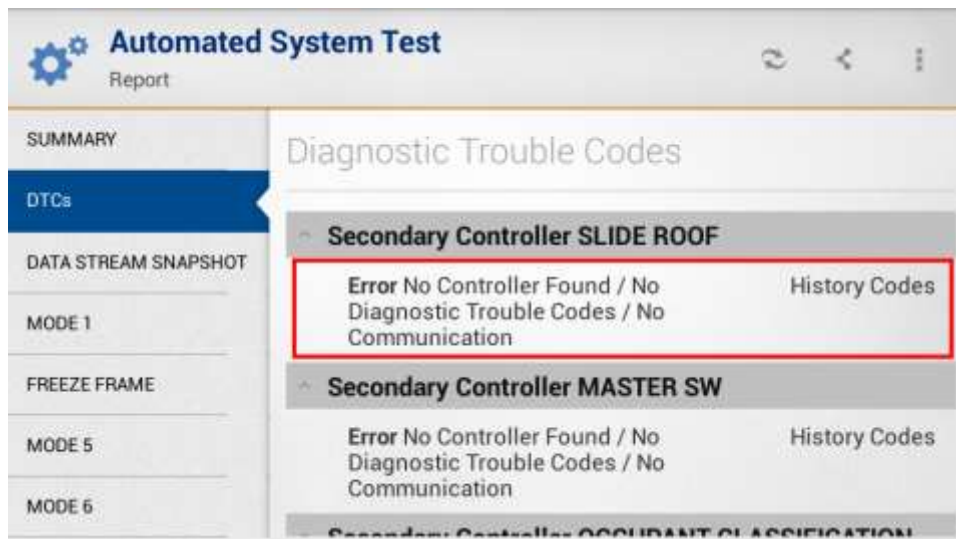
- Code Library option will now be available on the “Diagnostic Trouble Codes” screen for vehicles with Blink Codes:



- The DTC descriptions are now made consistent across all Repair Information screens.

Automated System Test / All Systems DTC Scan

- DTC code descriptions that are longer than 2 lines will now wrap and display up to 5 lines of text:



Other System Improvements

- Improved reliability of switching between diagnostic functions quickly.
- All OEM Warnings will only be displayed once per vehicle. User will not need to respond again when changing controllers.
- Display the correct usage of cables for Chrysler CCD (P/N 3825-59) cable (where applicable):

Before: User was instructed to use 3825-59 cable, but this would cause No Communications in certain vehicles (1993 Dodge Intrepid 3.3 Engine)



After: User is no longer instructed to use 3825-59 cable:



- Also updated the cable images that require use of the Chrysler CCD (P/N 3825-59) cable to include the actual cable image:

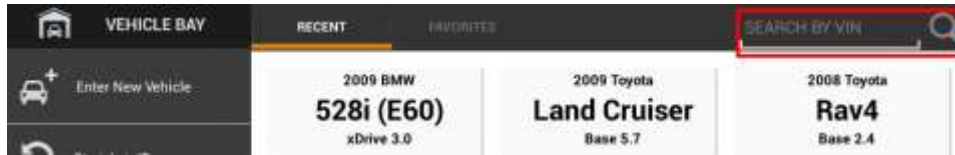
Before: Cable picture for 3825-59 missing:



After: Cable picture 3825-59 now pictured:



- Improved the “Search by VIN” entry on the Vehicle Bay screen. There is now a search icon that can be tapped to search on the inputted VIN. Additionally, pressing and holding in this field will bring up the Android Keyboard to allow for copy/paste handling:



- User can now utilize Android BACK button on Controller screen to return to their AUTO ID results:



- Continued improvements and enhancements in Spanish:
 - Spanish translations have been added to areas where there were no translations as well as many accommodations for Spanish text have been made in many areas of the tool.
 - Generic OBDII Output Report and Automated System Test Output Report have been improved for display in Spanish.
 - Maintenance Tests are now shown to the user if the language selected is Spanish. The text will be in English, but it will no longer display blank selections to user.
 - Key Reprogramming / Battery Disconnect procedures will now be displayed to the user if language selected is Spanish. The text will be in English, but it will no longer display blank selections to user.

Diagnostic Information Improvements

- Improved image view for the Transmission Pan Chart. The image can now be zoomed in on by double tapping or pinching to zoom:

Original:

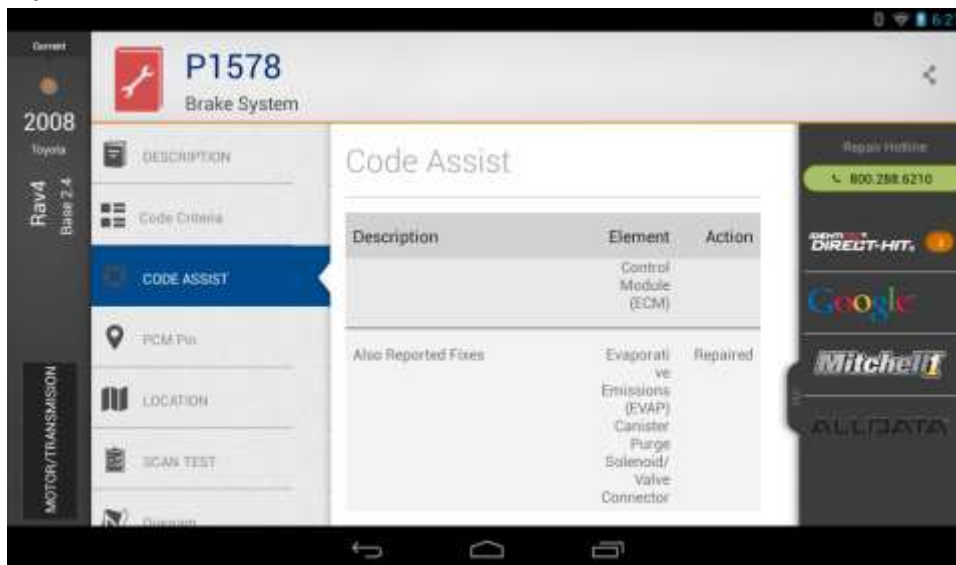


Zoomed:

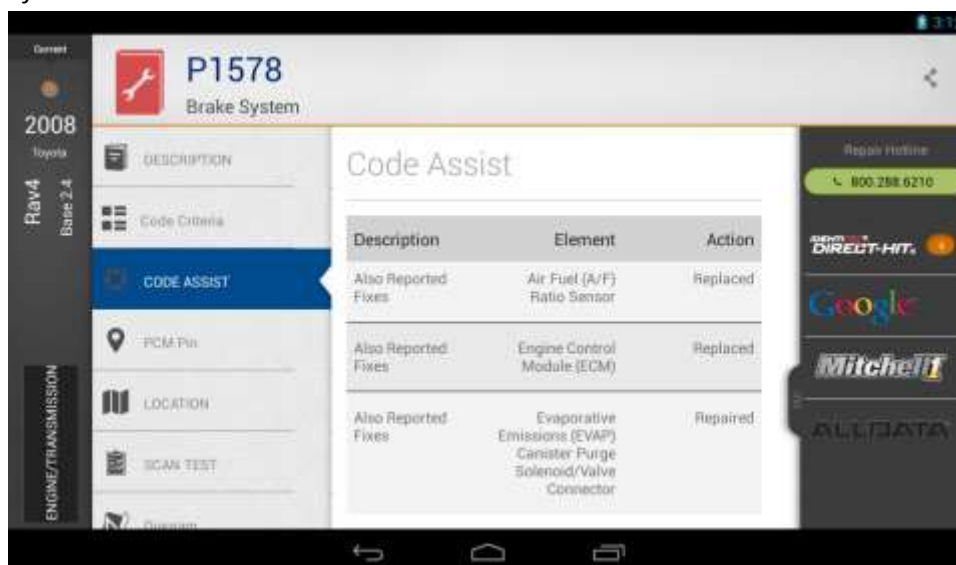


- Improved the Code-Assist Library output view to prevent wrapping of titles and text unnecessarily

Before:



After:



New Vehicle Coverage:

- New Coverage added for 2015MY GM vehicles
- New Coverage added for 2015MY Chrysler/Jeep vehicles
- New Coverage added for 2015MY Honda/Acura vehicles
- New Coverage added for 2015MY Hyundai/Kia vehicles
- New Coverage added for 2015MY Mazda vehicles
- New Coverage added for 2015MY Mitsubishi vehicles
- New Coverage added for 2015MY Alfa Romeo 4C
- New Coverage added for 2015MY Fiat vehicles
- Ford/Lincoln - expanded coverage for 2008-2014 SIDE OBSTACLE DETECTION, LIFTGATE/TRUNK, TRAILER BRAKE, REMOTE FUNCTION ACTUATOR and PARKING AID
- Honda/Acura - expanded coverage for 2003-2014 POWER WINDOW, MEMORY SEAT and AUTO LIGHT controllers
- Mazda - expanded coverage for 2007-2014 body and chassis systems
- Mitsubishi - expanded coverage for 2008-2014 HVAC and METER systems
- Land Rover - expanded coverage for 2014MY HVAC, Instrument and Body systems
- Added coverage for 4,473 new vehicle-ECU combinations

- Added 3,043 new Actuation type tests
- Added coverage for 2,749 new systems
- Added 234 new Adjustment type tests

New Coverage – USA Domestic

Chrysler/Jeep Coverage

- New Coverage added for 2015MY vehicles
- Added coverage for 574 new vehicle-ECU combinations
- Added coverage for 205 new systems
- 83 new Adjustment type special tests including:
 - Engine/PCM - CAM Crank Relearn Routine, Clear Variable Line Pressure Counters, Emissions Rolls Test Mode, Exhaust and Intake Phaser Cleaning tests, Learn ETC, Mass Air Flow Sensor Initialization, New Engine Installed, Oil Change Light Reset, Quicklearn tests, Reset After Replacement Of Lambda Sensor, Reset ECU, Reset Memory, SCR System After ECU Replacement Procedure, SCR System Tank or Pump Replacement, TCC Break In, Write Pinion Factor, Write VIN
 - Transmission/Electronic Shifter - Clear Self-Learning Data, EGS Initialization, Initialize CVT, New Actuators, Reset Adaptive Values, Reset ECU, Write VIN
 - ABS - Brake Bleeds, Brake Pedal Calibration, Initialization, Reset ECU, Write VIN, Longitudinal G Sensor Calibration, Longitudinal Sensor Calibration
 - Tire Pressure Monitor/WCM - Reset ECU, Tire Pressure Sensor Registration, Update Front and Rear Axle Nominal Tire Pressure Values, Write VIN
 - Safety/Airbag - OCM System Verification Test, Activate Driver and Passenger Head Restraint, Initialize ORC, Reset ECU, Write VIN
 - Climate (HVAC) - Actuator Calibration, HVAC Actuator Calibration Test, Reset ECU
 - Body Control - Program Tire Size
 - Suspension - Set Ride Height Level
 - Others - ELSD Quicklearn, IPC Oil Service Reset, Clear All Learned Seat Parameters, Key Fobs Linked To Memory, AFLS Calibration, Auto Highbeam Aim Test, Calibrate Liftgate
- 763 new Actuation type special tests including:
 - Engine/PCM - Compression Test, Cylinder Deactivation tests, DEF Dosing Injection Quantity, EGR tests, ETC tests, EVAP tests, Fan tests, Fuel Pump tests,

Ignition Timing, Injector tests, Oxygen Sensor tests, Power Balance, VVA Cylinder tests, VVT tests, Transmission tests

- Transmission/Electronic Shifter - Brake Switch, BTSI Solenoid, Gear Selection, Knob Lock State, Range Select tests, Linear Solenoid tests, Shift Solenoid tests
- ABS - ABS Motor, Solenoid tests, Lamp tests, BSM Longitudinal G Sensor Test
- Tire Pressure Monitor/WCM - BTSI Control, TPM Sensor Rolls, Read VIN, TPMS Warning Light
- Suspension - Height Sensor Check, Disable Level Control
- Instrument Cluster - Lamp tests, Fuel Level Gauge, IPC Self Test, Read VIN
- Climate (HVAC) - Indicator/Lamp tests, A/C Select, Ambient Temperature, Coolant Temperature, Door Actuator Position tests, Evap Sensor Temperature, Front Blower, HVAC Cool Down Test, HVAC Self Test, IR Sensor Temperature, Rear Blower
- Body Control - Lamp and Buzzer/Warning tests, Door Lock tests, Window tests, Wiper/Washer tests, Headlight tests, Turn Signal tests,
- Others - tests for SEAT systems, DOOR systems, AUDIO systems, PARKTRONICS
- Special test fixes/improvements::
 - 2009 Caliber 2.4L ENGINE - fixed "Injector 3 and 1 kill tests kill the wrong injector"
 - 2005 Magnum ENGINE - fixed "TPS Sweep test will not run properly"
 - 1997 Ram 2500 5.9L ENGINE - fixed "Sync Test not showing data items and errors out"

Ford Coverage

- Expanded coverage for 2008-2014 SIDE OBSTACLE DETECTION, LIFTGATE/TRUNK, TRAILER BRAKE, REMOTE FUNCTION ACTUATOR and PARKING AID
- Added coverage for 292 new vehicle-ECU combinations
- Added coverage for 123 new systems
- 189 new Adjustment type special tests including:
 - Engine/PCM - EGR tests, EVAP tests, Fuel Pump tests, Idle Air Control, Intake Manifold Runner Control, Power Balance, Relative Compression, Transmission tests, Injector tests, O2 Sensor Heater tests
 - Instrument Cluster - Lamp tests, Segment tests, Button tests, Temperature Gauge

- Seat - Seat Motor tests, Mirror tests, On Demand Test, Climate Controlled Seat tests, Seat Bladder Pump tests
- Special test fixes/improvements:
 - 2010 Escape PCM - fixed "In Power Balance test is not detecting a dead cylinder"
 - 2010 Fusion 2.5L PCM - fixed "EVAP test would not run with engine running"
 - 2008 Crown Victoria 4.6L PCM - fixed "In Power Balance test is not detecting a dead cylinder"
 - 2007 Grand Marquis 4.6L PCM - fixed "In Power Balance test unable to see historical data"
 - 2006 F-Series Super Duty 6.0L PCM - fixed incorrect application of Cylinder Contribution test
 - 2004 F-150 ABS - fixed "No test available to command ABS Pump on"
 - 2003 Explorer 4.0L PCM - fixed confusing on-screen instructions for vehicle speed
 - 2003 Focus 2.0L PCM - fixed "IMRC Command test would not work"
- Other fixes/improvements:
 - 2001 Taurus GEM/CTM - fixed communication issue with GEM/CTM module

General Motors / Saturn Coverage

- New Coverage added for 2015MY vehicles
- Added coverage for 1,950 new vehicle-ECU combinations
- Added coverage for 1,642 new systems
- 47 new Adjustment type special tests including:
 - Engine/PCM - Clutch Pedal Position Learn, CrankShaft Learn, DPF Service Regeneration, EGT Sensor Reset, Fuel Composition Reset, Fuel Filter Life Reset, Fuel Trim Reset, HO2S Heater Learn, Idle Learn Reset, Idle Speed Adjustment, NOx Catalyst Reset, Oil Life Reset, Reductant Fluid Tank Level Reset, Reductant Injector Reset, Reductant System Reset, Reset Injection Value tests, Reprogram Injector Flow Rates
 - Hybrid - Clear Secured High Voltage DTCs, OnBoard Jump Assist Counter Reset, Fuel Economy Reset, Hybrid/EV Battery Pack Capacity Learn, Hybrid/EV Battery Pack Coolant Control Solenoid Valve Learn, Hybrid/EV Battery Pack Data Reset, Pass. Comp. Heater Coolant Control Solenoid Valve Learn
 - Transmission - Transmission Adaptive Pressure Reset, Transmission Adaptive Values Learn, Transmission Oil Life Reset

- Transfer Case - AWD Disabled-by-Malfunction Counter Reset, Clutch Control Module/Rear Drive System Matching ID Setup, Reset Clutch Overtemp Counter, Transfer Case Clutch Overtemperature Counter Reset
- Brakes/ABS - Automated Brake Bleed, Brake Controls Offset Learn, Brake Pedal Position Sensor Calibration, Steering Wheel Angle Sensor Learn, Yaw Rate Sensor Learn
- Electric Parking Brake - Park Brake Cable Replacement Procedure, Park Brake Calibration
- Tire Pressure Monitor/RCDLR - Tire Pressure Sensor Registration, Tire Type/Pressure Selection, Invalidate All Fobs, Program Key Fob tests
- Safety - Configure New Module, Passenger Presence Sensor Learn, Reset History Buffer
- Steering - Clear Active Pull Compensation Learned Limits, Clear Driver-Specific Steering Angles, Clear Softstops, Power Steering Softstops Reset, Steering Wheel Angle Sensor Learn
- Climate/HVAC - HVAC Actuators Learn
- Body Control - Brake Pedal Position Sensor Calibration, Clear Window Learned Values tests, Tire Pressure Sensor Registration, Tire Type/Pressure Selection
- Others - IPC CAN Bus Configuration Learn, Seat Adjustable Pedal Calibration, Learn Pedal Softstops, Vehicle Direction Camera Learn, Control Module Reset, Yaw Rate Sensor Recalibration
- 443 new Actuation type special tests including:
 - Engine/PCM - Camshaft Actuator tests, Cylinder Power Balance, Cylinder Deactivation System, Compression Test, Depressurize Fuel System, EGR tests, EVAP tests, Fan tests, Fuel Pump tests, Fuel Injector Balance, Idle Speed Control tests, Oxygen Sensor tests, Power Balance, Reductant Injector, Reductant Pump, VVT tests, Transmission tests
 - Hybrid - Autostart/Autostop, Auxiliary Transmission Fluid Pump Speed, Battery Energy Control Module, Drive Motor Coolant Pump Relay, Drive Motor Speed, Hybrid/EV Powertrain Control Module, ICE Only Mode, Cooling Fan Motor, Hybrid/EV Battery Pack Isolation Test
 - Transmission - Line Pressure Control Solenoid Valve, PC Solenoid tests, Shift Solenoid tests, TCC Control tests
 - ABS/Parking Brake - ABS Motor, Solenoid tests, Park Brake Cable Service Apply, Park Brake Cable Service Release
 - Safety - Side Object Detection alert tests
 - Transfer Case - Rear Differential Clutch tests, Transfer Case Lamp tests

- Suspension - All Shock Absorber Actuators, Shock Absorber tests
- Instrument Cluster - Dimming tests, Instrument Cluster Gauge Sweep, Lamp tests, Button tests
- Climate/HVAC - Air Inlet Door, Blower Motor, Inside Air Temperature Fan, Mix Door tests, Illuminate All Indicators
- Body Control - Lamp and Buzzer/Warning tests, Door Lock tests, Window tests, Light/Headlamp tests, Wiper tests
- Seat - Seat Motor tests, Mirror tests
- Doors - Door Lock/Unlock tests, Window tests, Mirror tests
- Others - tests for CAMERA systems, tests for RADIO systems
- Special test fixes/improvements:
 - 2012 Silverado 6.6L ENGINE - fixed "Reprogram Injector Flow Rates test would not work properly"
 - 2012 LaCrosse - fixed "no test available to adjust steering wheel sensor"
 - 2007 CTS-V PCM - fixed VIN Relearn test "Pre-conditions not met or test not supported"
 - 2007 CTS-V DDM - fixed Door Lock/Unlock test "Error function aborted"
 - 2007 Silverado 4.3L ENGINE - fixed "Crankshaft Relearn fails due to pre-conditions error"
 - 2007 Sierra 2500HD 6.0L ENGINE - fixed "Crankshaft Relearn fails due to pre-conditions error"
 - 2007 Trailblazer ENGINE - fixed "EVAP test would not run properly"
 - 2004 Sierra 1500 ABS - fixed "ABS Auto Bleed is not working"
 - 2002 Silverado 1500 ABS - fixed "ABS Bleed Sequence will not complete"
 - 2002 Trailblazer 4.2L PCM - fixed "While running Cam Phaser test tool would crash when switching data items"
 - 2002 Silhouette IPC - fixed "Gauge Sweep tests would not work properly"
 - 2000 Century 3.1L PCM - fixed "EVAP Vent Solenoid test didn't explain reason for not running, due failed pre-conditions"
 - 2000 Sierra 1500 ABS - fixed "Automated Bleed procedure will not complete"
 - 1999 Yukon Denali ABS - fixed "Automated Bleed procedure will not complete"
- Other fixes/improvements:
 - 2014 Enclave REAR DIFF CLUTCH MODULE - fixed communication issues

- 2009 G6 ABS - fixed "lost communication with ABS during test drive"
- 1998 Park Avenue ABS - fixed "will lose communications will viewing datastream"

New Coverage – USA Asian

Honda Coverage

- New Coverage added for 2015MY vehicles
- Expanded coverage for 2003-2014 POWER WINDOW, MEMORY SEAT and AUTO LIGHT controllers
- Added coverage for 720 new vehicle-ECU combinations
- Added coverage for 103 new systems
- 23 new Adjustment type special tests including:
 - Engine/PCM - Crank Pattern Clear, ECM/PCM Reset
 - Transfer Case - Differential Torque Setup, ECU Activation, Longitudinal G Sensor Neutral Point Learn
 - ABS - All Sensor Calibration, Brake Pressure Sensor Calibration, Steering Angle Sensor Calibration
 - Tire Pressure Monitor - Tire Pressure Sensor Registration
 - Steering - EPS Steering Sensor Value Clear, Torque Sensor Learn
 - Others - IPC ATF Reset, Engine Oil Life Reset
- 190 new Actuation type special tests including:
 - Engine/PCM - All Injectors OFF, One Injector, EGR tests, EVAP system tests, Fan tests, Fuel Pump tests, Throttle Actuator Control Test, VTEC tests
 - Hybrid - IMA Battery Fan Low/Mid/High Speed tests
 - Transmission - Clutch Pressure tests, Shift Solenoid tests, Shift Lock Solenoid
 - ABS - ABS Motor, Solenoid tests
 - Transfer Case - Engagement Clutch tests, Rear Differential Air Purge, Rear Differential Oil Pressure Sensor Check
 - Instrument Cluster - Lamp tests, Button tests, Engine Tachometer, Engine Water Temperature Gauge, Fuel Level Gauge, Vehicle Speedometer, Self-Diagnostic Function
 - Body Control - Lamp and Buzzer/Warning tests, Door Lock tests, Window tests, Light/Headlamp tests, Wiper/Washer tests, Sliding Door tests

- Special test fixes/improvements:
 - 2011 CR-V IPC - fixed "Maintenance Light Reset test failed"
- Other fixes/improvements:
 - 1997 Accord 2.2L ENGINE - fixed "unable to read DTCs"

Hyundai Coverage

- New Coverage added for 2015MY vehicles
- Added coverage for 256 new vehicle-ECU combinations
- Added coverage for 203 new systems
- 21 new Adjustment type special tests including:
 - Engine/PCM - Additive Correction for O2 Sensor Heaters, Auto Detected Configuration Reset, Oxygen Sensor Test, Reset Adaptive Values, Write VIN
 - Hybrid - Battery Inspection, Engine Test Off, Engine Test On
 - Transmission - Reset Auto T/A Values
 - ABS - Air Bleeding Mode, Auto Detected Configuration Reset, G Sensor Calibration, Reset Adaptive Values, Steering Angle Sensor
 - Tire Pressure Monitor - Tire Pressure Sensor Registration, Write VIN
 - Steering - Wheel alignment procedure
- 21 new Adjustment type special tests including:
 - Engine/PCM - Additive Correction for O2 Sensor Heaters, Auto Detected Configuration Reset, Oxygen Sensor Test, Reset Adaptive Values, Write VIN
- 504 new Actuation type special tests including:
 - Engine/PCM - Cam Phaser tests, Change Oil Lamp, CVVT tests, Cylinder Power Balance, ETC Motor, EGR tests, EVAP tests, Fan tests, Fuel Pump tests, Ignition Coil tests, Injector tests, Oxygen Sensor tests, Variable Intake tests
 - Hybrid - Fan tests, Motor Speed Control Operation, Motor Torque Control Operation
 - Transmission - Lamp tests, Shift Control Solenoid tests, Pressure Control Solenoid tests, TCC Solenoid tests
 - ABS - ABS Motor, Solenoid tests, ESV Control tests
 - Electric Parking Brake - Actuator Control Apply, Actuator Control Release, EPB Status Lamp
 - Climate/HVAC - Air Inlet Door, Auto Defog Mode tests, Blower Motor tests, Compressor On and Off tests, Air Mix Door tests

- Body Control - Lamp and Buzzer/Warning tests, Window tests, Mirror tests, Door Lock tests, Headlight tests, Turn Signal tests, Wiper/Washer tests
- Others - Tests for DOOR systems, tests for SEAT systems, tests for AHLS systems, tests for CAMERA systems
- Other fixes/improvements:
 - 2013 Accent ENGINE - fixed "will not load Data Items"

Kia Coverage

- New Coverage added for 2015MY vehicles
- Added coverage for 219 new vehicle-ECU combinations
- Added coverage for 156 new systems
- 18 new Adjustment type special tests including:
 - Engine/PCM - Additive Correction for O2 Sensor Heaters, Auto Detected Configuration Reset, Oxygen Sensor Test, Reset Adaptive Values, Write VIN
 - Hybrid - Battery Inspection, Engine Test Off, Engine Test On
 - Transmission - Reset Auto T/A Values
 - ABS - Air Bleeding Mode, Auto Detected Configuration Reset, G Sensor Calibration
 - Tire Pressure Monitor - Tire Pressure Sensor Registration, Write VIN
 - Steering - Wheel alignment procedure
- 582 new Actuation type special tests including:
 - Engine/PCM - Cam Phaser tests, Change Oil Lamp, CVVT tests, Cylinder Power Balance, ETC Motor, EGR tests, EVAP tests, Fan tests, Fuel Pump tests, Ignition Coil tests, Injector tests, Oxygen Sensor tests, Variable Intake tests
 - Hybrid - Fan tests, Motor Speed Control Operation, Motor Torque Control Operation
 - Transmission - Lamp tests, Shift Control Solenoid tests, Pressure Control Solenoid tests, TCC Solenoid tests
 - ABS - ABS Motor, Solenoid tests, ESV Control tests
 - Electric Parking Brake - Actuator Control Apply, Actuator Control Release, EPB Status Lamp
 - Climate/HVAC - Air Inlet Door, Auto Defog Mode tests, Blower Motor tests, Compressor On and Off tests, Air Mix Door tests
 - Body Control - Lamp and Buzzer/Warning tests, Window tests, Mirror tests, Door Lock tests, Headlight tests, Turn Signal tests, Wiper/Washer tests
 - Others - tests for DOOR systems, tests for SEAT systems, tests for AHLS systems, tests for CAMERA systems

Mazda Coverage

- New Coverage added for 2015MY vehicles
- Expanded coverage for 2007-2014 body and chassis systems
- Added coverage for 204 new vehicle-ECU combinations
- Added coverage for 152 new systems
- 4 new Adjustment type special tests including:
 - Engine/PCM - Reset KAM
 - ABS - Lateral Accel Sensor Initialization Start, Longitudinal Acceleration Sensor Initialization Start
 - Tire Pressure Monitor - ID Regist Mode
- 44 new Actuation type special tests including:
 - ABS - ABS Motor, ABS Power Relay, Solenoid tests, On Demand Test

Mitsubishi Coverage

- New Coverage added for 2015MY vehicles
- Expanded coverage for 2008-2014 HVAC and METER systems
- Added coverage for 138 new vehicle-ECU combinations
- Added coverage for 106 new systems
- Mitsubishi specific descriptions added for 34 OBDII Mode 6 parameters
- 7 new Adjustment type special tests including:
 - ABS - All Sensor Calibration, G Sensor Calibration, Lateral G Sensor Calibration, M/C Pressure Calibration, SAS Calibration, Air Bleed-ACD
 - Steering - SAS Calibration
- 59 new Actuation type special tests including:
 - Engine/PCM - EVAP tests, Fan tests, Fuel Pump tests, Injector tests, VVT tests
 - ABS - Motor tests, Solenoid tests

Nissan Coverage

- Special test fixes/improvements:
 - 2005 Altima ENGINE - fixed "Idle Air Volume Learn needs improved instructions for RPM pre-conditions"
 - 2004 Altima ENGINE - fixed "Idle Learn Reset was not available"

Toyota Coverage

- Special test fixes/improvements:
 - 2009 Camry ENGINE/TRANS - fixed "Prohibit the Catalyst OT Misfire prevent F/C test will not work"
 - 2009 Camry ENGINE/TRANS - fixed " Activate SL3 Solenoid test will not work"
 - 2009 Camry ABS - fixed "ABS Solenoid test will not work"
 - 2009 Camry METER - fixed "ABS Indicator lamp test will not work"
 - 2009 Camry BODY - fixed "Headlight Relay test will not work"
 - 2009 Camry BODY - fixed "D-Door Unlock test will not work"
 - 2008 Rav4 METER - fixed "Exiting any Gauge test causes diagnostic hub to stop working"
 - 2008 Rav4 AIR CONDITIONING - fixed "Servo Motor Initialization test fails pre-conditions"
 - 2008 Rav4 AIR CONDITIONING - fixed "Some tests should not be shown, not available for this vehicle"
 - 2008 Rav4 BODY - fixed "Vehicle Horn test will not work"
 - 2006 Solara AIRBAG - fixed "No data items being shown for Sensitivity Check and Zero Point Calibration tests"
 - 2004 RX330 3.3L ENGINE - fixed "VVT tests are difficult to find, not in same group"
 - 2004 Sequoia 4.7L ENGINE - fixed "EVAP Vent Control Valve command not working"
 - 2003 Camry 2.4L ENGINE - fixed "Reset Memory test will fail every time"
 - 2003 Highlander 3.0L ENGINE - fixed "several Engine tests failed"
 - 2001 RX300 TRANSMISSION - fixed "Reset Memory test does not have an Enter option available to complete the reset"
 - 2001 Celica 1.8L ENGINE - fixed "EVAP Controls could not be ran due to Pre- Conditions Not Met"

New Coverage – USA European

Alfa Romeo Coverage

- New Coverage added for 2015MY 4C vehicle
- Added coverage for 11 new vehicle-ECU combinations
- Added coverage for 11 new systems

- 10 new Adjustment type special tests including:
 - Engine/PCM - Air-Conditioning Self-Learning, Brake Switch Learn, Clear Misfire TLC, Reset Accelerator Pedal Adaptives, Reset Adaptive After Oil Change, Throttle Body Self-Learning
 - ABS - Longitudinal Sensor Calibration
 - Tire Pressure Monitor - Tire Pressure Sensor Registration, Update Front and Rear Axle Nominal Tire Pressure Values
 - Others - IPC Oil Service Reset
- 113 new Actuation type special tests including:
 - Engine/PCM - EVAP tests, Fan tests, Fuel Pump tests, Injector tests, Ignition Coil tests, Oxygen Sensor tests, VVA Cylinder tests
 - ABS - Lamp tests, Solenoid tests, BSM Longitudinal G Sensor Test, BSM Static Test, Recirculation Pump
 - Instrument Cluster - Lamp tests, Buzzer tests, Autocheck, Engine Speed Cluster, Fuel Level Gauge, Vehicle Speed Cluster
 - Body Control - Lamp and Buzzer/Warning tests, Door Lock tests, Window tests, Wiper/Washer tests

BMW/Mini Coverage

- Special test fixes/improvements:
 - 2011 535xi REAR ELECTRONIC MODULE - fixed Interior Light test not working properly

Fiat Coverage

- New Coverage added for 2015MY vehicles
- Added coverage for 36 new vehicle-ECU combinations
- Added coverage for 23 new systems
- 12 new Adjustment type special tests including:
 - Engine/PCM - Air-Conditioning Self-Learning, Brake Switch Learn, Clear Misfire TLC, Reset Accelerator Pedal Adaptives, Reset Adaptive After Oil Change, Throttle Body Self-Learning
 - Transmission - Clear Self-Learning Data
 - ABS - Longitudinal Sensor Calibration
 - Tire Pressure Monitor - Tire Pressure Sensor Registration, Update Front and Rear Axle Nominal Tire Pressure Values
 - Steering - Clear Steering Pull Compensation

- Others - IPC Oil Service Reset
- 133 new Actuation type special tests including:
 - Engine/PCM - EVAP tests, Fan tests, Fuel Pump tests, Injector tests, Ignition Coil tests, Oxygen Sensor tests, VVA Cylinder tests
 - Transmission - Linear Solenoid tests, PPV tests, Shift Solenoid tests
 - ABS - Lamp tests, Solenoid tests, BSM Longitudinal G Sensor Test, BSM Static Test, Recirculation Pump
 - Instrument Cluster - Lamp tests, Buzzer tests, Autocheck, Engine Speed Cluster, Fuel Level Gauge, Vehicle Speed Cluster
 - Body Control - Lamp and Buzzer/Warning tests, Door Lock tests, Window tests, Wiper/Washer tests

Jaguar Coverage

- 3 new Actuation type special tests including::
 - Instrument Cluster - Hill Descent Control Active, Low Fuel Warning Lamp, Trailer Warning Lamp

Land Rover Coverage

- Expanded coverage for 2014MY HVAC, Instrument and Body systems
- Added coverage for 20 new vehicle-ECU combinations
- Added coverage for 20 new systems
- 7 new Actuation type special tests including:
 - Instrument Cluster - Engine Temperature Gauge Pointer Position, Fuel Gauge Pointer Position, Hill Descent Control Active, Low Fuel Warning Lamp, Low Gear, Speedometer Pointer Position, Trailer Warning Lamp
- Special test fixes/improvements:
 - 2008 Range Rover IPC - fixed Rear Fog test not working properly
 - 2008 Range Rover IPC - fixed Pad Wear/Brake System test not working properly
 - 2008 Range Rover IPC - fixed Speed Active test not working properly

Mercedes Benz Coverage

- Special test fixes/improvements:
 - 2010 E-Class - fixed "Maintenance Service Reset would say complete but dash light would not reset"
 - 2012 S350 (221) ENGINE - fixed "Boost Pressure Positioner needs improved warning/instruction screens"

Repair Information

- Updated Repair Information for the following:
 - Battery Disconnect procedures and reference information
 - Key Fob Programming procedures and reference information
 - Repair-Trac fixes
 - Code-Assist Library confirmed fixes
 - SymptomAssist
 - DTC Circuit Description
 - DTC Possible Causes
 - Code Info
 - Data Item Circuit Description
 - Data Item Operating Ranges
 - PCM Connector Pin Information (B.O.B)
 - Updated ABS Brake Bleed Procedures for all manufacturers
 - Updated Oil Light Reset Procedures for all manufacturers.

Thank you for your patronage!