

Release Notes

Version 3.1.1.9

Release Notes Contents

- [Overview](#)
- [New Vehicle Coverage – Summary](#)
- [New Software Improvements – Summary](#)
- [New Vehicle Coverage - Details](#)
- [New Software Improvements - Details](#)

Overview

Version 3.1.1.9 contains major vehicle coverage additions. Also provided are selected highlights of new features, fixed issues reported by technicians, and other improvements. You may notice many more in the software that are just too numerous to identify individually. Keep your tool updated to always have the latest updates.

New Vehicle Coverage - Summary:

- **Ford** – New coverage for 2017MY vehicles and systems
- **Mazda** – New coverage for 2017-2018MY vehicles and systems
- **Mitsubishi** – New coverage for 2017-2018MY vehicles and systems
- **New Systems** -1,287
- **New Vehicle-ECU Combinations** -1,825
- **New Adjustment type tests** – 64
- **New Actuation type tests** - 298
- **New OBDII Mode 6 additions** – OEM defined parameters for Mitsubishi
- **Updated Diagnostic Information for the following:**
 - Locations (DLC, Fuse panel, ECU) for 2016MY Chrysler/Jeep and 2017MY GM
 - Data Item Circuit Description for 2015-2016MY Honda
 - Data Item Operating Ranges for 2014-2016MY Honda
 - Oil Light Reset Procedures

New Software Improvements – Summary:

- Reports
 - More spacing added for clear separation between DTCS on Reports
 - Add ability to add images to AST and ASDTC reports
- Saved Diagnostic Data
 - Improved Sharing functionality
 - Improved Sorting capabilities
- Software Update
 - Informational update to inform user about ensuring they are not connected to a vehicle during Software Update

New Coverage – USA Domestic

Chrysler/Jeep Coverage

41 new Adjustment type special tests including:

- **Engine/PCM** - Clear DEF Pump Learned Offset Values, Driving Regeneration Request, Mass Air Flow Sensor Initialization, Oil Change Light Reset, Reset After Replacement Of Lambda Sensor, Reset of Lambda Values, Reset of SCR Long Term Adaptation Factor, Reset SCR Mileage Counter to 200 Miles, Reset Zero Fuel Quantity Calibration, SCR DEF Tank Fluid Level Filter Reset, SCR System After ECU Replacement Procedure, SCR System Catalyst Reset, SCR System Dosing Module Replacement, SCR System Tank or Pump Replacement
- **Transmission/Electronic Shifter** - Valve Body Solenoid Learn
- **Others** - DRIVE TRAIN CONTROL MODULE Power Take - Off Unit Replacement

50 new Actuation type special tests including:

- **Engine/PCM** - Boost Pressure Actuator, Compression Test, Crankcase Ventilation Heater, DPF Reset Option, Metering Unit Actuator, Pressure Regulator Valve, Radiator Fan 1 Duty Cycle, SRV Test, Throttle Valve Actuator
- **Transmission/Electronic Shifter** - Background LED State

Updated Diagnostic Information for the following:

- Locations (DLC, Fuse panel, ECU) for 2016MY

Ford Coverage

- New coverage for 2017MY vehicles and systems
- Added coverage for 787 new systems
- Added coverage for 886 new vehicle-ecu combinations
- 2017 MY Ford F250/F350 Super Duty coverage not available due to source data unavailability.

1 new Actuation type special tests including:

- **Engine/PCM** – Injector Electrical

Updated Diagnostic Information for the following:

- Oil Light Reset Procedures for 2017MY vehicles

General Motors / Saturn Coverage

- Added coverage for 28 new vehicle-ecu combinations

1 new Adjustment type special tests including:

- **Others** - LIFTGATE MODULE Liftgate Maximum Open Position Learn

Special test fixes/improvements:

- 2016 Escalade - fixed Steering Wheel Angle Sensor Learn and Reset tests not available
- 2016 Colorado AIRBAG - fixed Indicator and Yaw Rate Sensor Learn tests not available

Updated Diagnostic Information for the following:

- Locations (DLC, Fuse panel, ECU) for 2017MY
- Oil Light Reset Procedures for 2017MY vehicles

New Coverage – USA Asian

Honda/Acura Coverage

- Added coverage for 257 new vehicle-ecu combinations
- 2018 Honda Clarity coverage not available due to source data unavailability.

Other fixes/improvements:

- 2008 Fit IMMOBILIZER - fixed communication issues

Updated Diagnostic Information for the following:

- Data Item Circuit Description for 2015-2016MY
- Data Item Operating Ranges for 2014-2016MY
- Oil Light Reset Procedures for 2016MY

Mazda Coverage

- New coverage for 2017-2018MY vehicles and systems
- Added coverage for 210 new systems
- Added coverage for 210 new vehicle-ecu combinations

Mitsubishi Coverage

- New coverage for 2017-2018MY vehicles and systems
- Added coverage for 290 new systems
- Added coverage for 361 new vehicle-ecu combinations
- 34 Mitsubishi defined OBDII Mode 6 parameters
- 2018 Outlander PHEV and Eclipse Crossover coverage not available due to source data unavailability

7 new Adjustment type special tests including:

- **ABS/Brakes** - All Sensor Calibration, G Sensor Calibration, Lateral G Sensor Calibration, Master Cylinder Pressure Calibration, SAS Calibration
- **Tire Pressure Monitor** - Tire Pressure Sensor Registration
- **Steering** - Steering Angle Sensor Calibration

110 new Actuation type special tests including:

- **Engine/PCM** - Engine Running Injector Kill Test, EVAP Emission Purge SOL Valve, EVAP Emission Ventilation SOL, VVT Oil Control Valve
- **ABS/Brakes** - ESS Test Mode, Wheel ABS Drive tests, Stoplight Test Mode
- **Climate/HVAC** – A/C Compressor Drive, Air Conditioning Output, Air Mix Damper Motor, Front Blower Fan, Idle Up Request, MAX COOL Request
- **Others** - tests for BSW and EPB, CORNER SENSOR/SONAR

Updated Diagnostic Information for the following:

- Oil Light Reset Procedures for 2013-2016MY

Nissan/Infiniti Coverage

12 new Adjustment type special tests including:

- **Transmission** - Erase Calibration Data, G Sensor Calibration
- **Climate (HVAC)** - Set Rear Temperature Correction
- **Body Control** - Anti Theft Alarm Trigger Setting, Anti-Lock Out Set, Door Lock / Unlock, Horn Chirp Setting, Multi Answer Back Setting, Retained Power Setting, Room Lamp Timer Logic Setting, Wiper Speed Setting

14 new Actuation type special tests including:

- **Body Control** - Lamp and Buzzer/Warning tests, Door Lock tests, Wiper tests
- **Others** - tests for ADAPTIVE HEADLIGHT

Other fixes/improvements:

- 2003 G35 TRANSMISSION - fixed communication issues

Toyota/Lexus Coverage

- Added coverage for 82 new vehicle-ecu combinations

2 new Actuation type special tests including:

- **Engine/PCM** - Control the Shift
- **Doors** - BACK DOOR Rear Wiper

Updated Diagnostic Information for the following:

- Oil Light Reset Procedures for 2016MY

New Coverage – USA European

Audi Coverage

Updated Diagnostic Information for the following:

- Oil Light Reset Procedures for 2014-2015MY

BMW/Mini Coverage

Updated Diagnostic Information for the following:

- Oil Light Reset Procedures for 2013-2015MY

Fiat Coverage

1 new Adjustment type special tests including:

- **Transmission/Electronic Shifter** - Valve Body Solenoid Learn

Jaguar Coverage

53 new Actuation type special tests including:

- **Engine/PCM** - Commanded Evaporative Purge, Exhaust Camshaft Position Actuator Duty Cycle tests, Fuel Pump - Duty Cycle, Intake Camshaft Position Actuator Duty Cycle tests, Throttle Motor Pulse Width Modulation Signal - Commanded
- **Climate (HVAC)** - AC Clutch Engage, Blower Speed Output, External Ambient Temperature, Left Seat Heater
- **Suspension** - Air Suspension Actuator Status - Compressor State, Damper Actuator tests
- **Body Control** - Auxiliary Driving Lamps Relay Control, Battery Saver Relay Control, Fuel Pump Relay Control State, Right Headlamp Low Beam
- **Others** – SEAT MODULE switch tests, DOOR MODULE tests

Land Rover Coverage

1 new Adjustment type special tests including:

- **Climate/HVAC** - Right Temperature Setting

66 new Actuation type special tests including:

- **Engine/PCM** - Commanded Evaporative Purge, Exhaust Camshaft Position Actuator Duty Cycle tests, Fuel Pump - Duty Cycle, Intake Camshaft Position Actuator Duty Cycle tests, Throttle Motor Pulse Width Modulation Signal - Commanded
- **Suspension** - Air Suspension Actuator Status - Compressor State, Damper Actuator tests
- **Climate (HVAC)** - AC Clutch Engage, Blower Speed Output, External Ambient Temperature, Left Seat Heater, Stepper Motor Position tests
- **Body Control** - Front Fog Lamp, Wiper Relay, Fuel Filler Flap Lock/Unlock, Headlight Washer Relay tests, Horn Relay, Turn Signal Lamp tests
- **Others** – SEAT MODULE switch tests, DOOR MODULE tests

Mercedes Benz

Updated Diagnostic Information for the following:

- Oil Light Reset Procedures for 2015MY

Volkswagen Coverage

1 new Actuation type special tests including:

- **Engine/PCM** - SRV Test

Updated Diagnostic Information for the following:

- Oil Light Reset Procedures for 2014-2015MY

Volvo

Updated Diagnostic Information for the following:

- Oil Light Reset Procedures for 2015-2016MY

New Software Improvements - Details

Reports

More spacing has been added for a clear separation of the Controllers that have DTCS on user saved Reports.

Before

VEHICLE INFORMATION		
2008 Ford F-150 King Ranch 5.4		
VIN	1FTPW14V28FC54321	
DTCS		
PCM / PATS		
B10A2	Current Codes	Crash Input
B1213	Current Codes	Less Than Two Keys Programmed To Passive Anti-Theft System
B1219	Current Codes	Fuel Tank Pressure Sensor Circuit
ABS		
B104B	Current Codes	Driver Side Crash Sensor Cross Link To Another Sensor
B1104	Current Codes	Steering Angle Sensor Signal Error




After

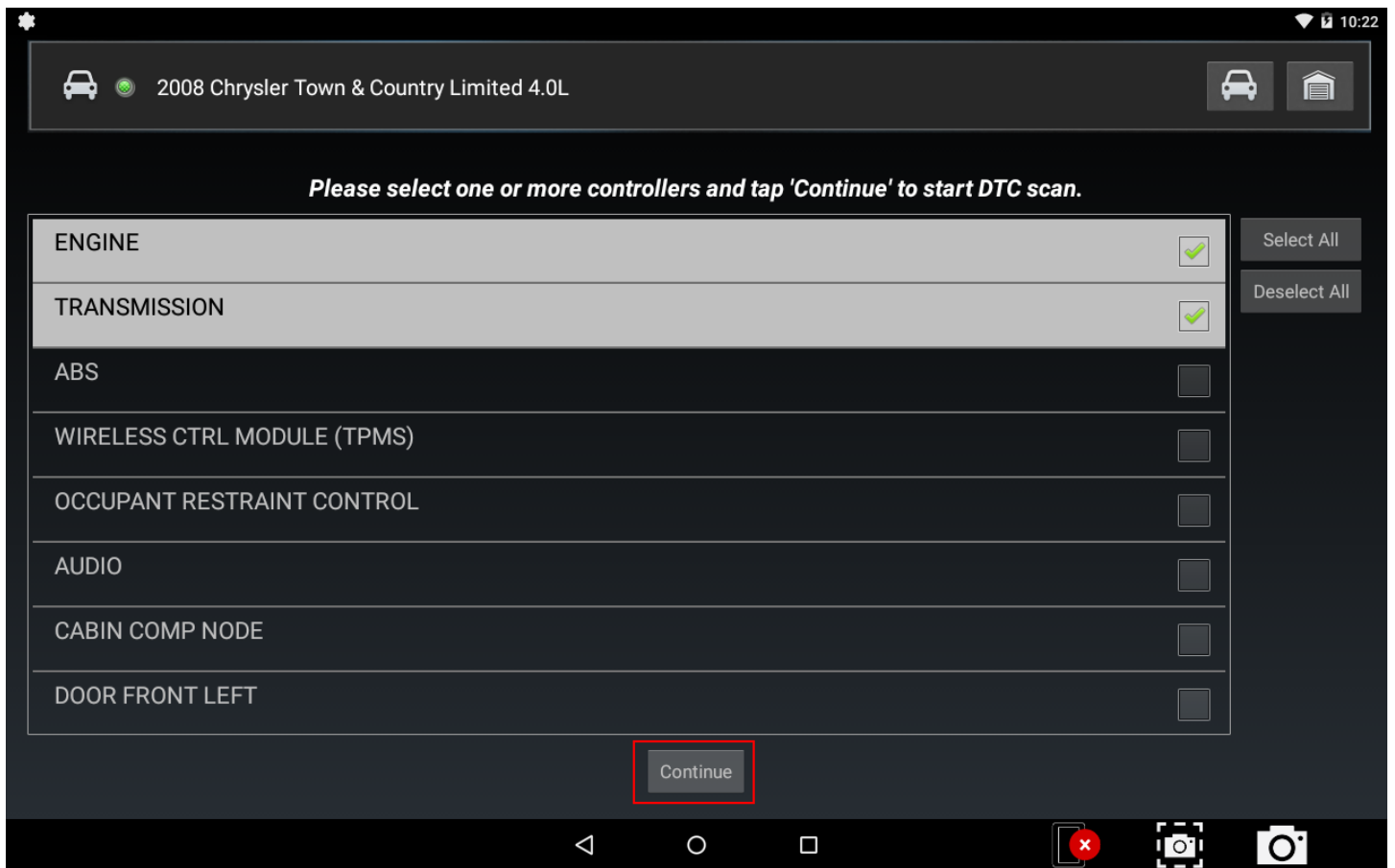
VEHICLE INFORMATION		
2008 Ford F-150 King Ranch 5.4		
VIN	1FTPW14V28FC54321	
DTCS		
PCM / PATS		
B10A2	Current Codes	Crash Input
B1213	Current Codes	Less Than Two Keys Programmed To Passive Anti-Theft System
B1219	Current Codes	Fuel Tank Pressure Sensor Circuit
ABS		

Add ability to add images to AST and ASDTC reports.

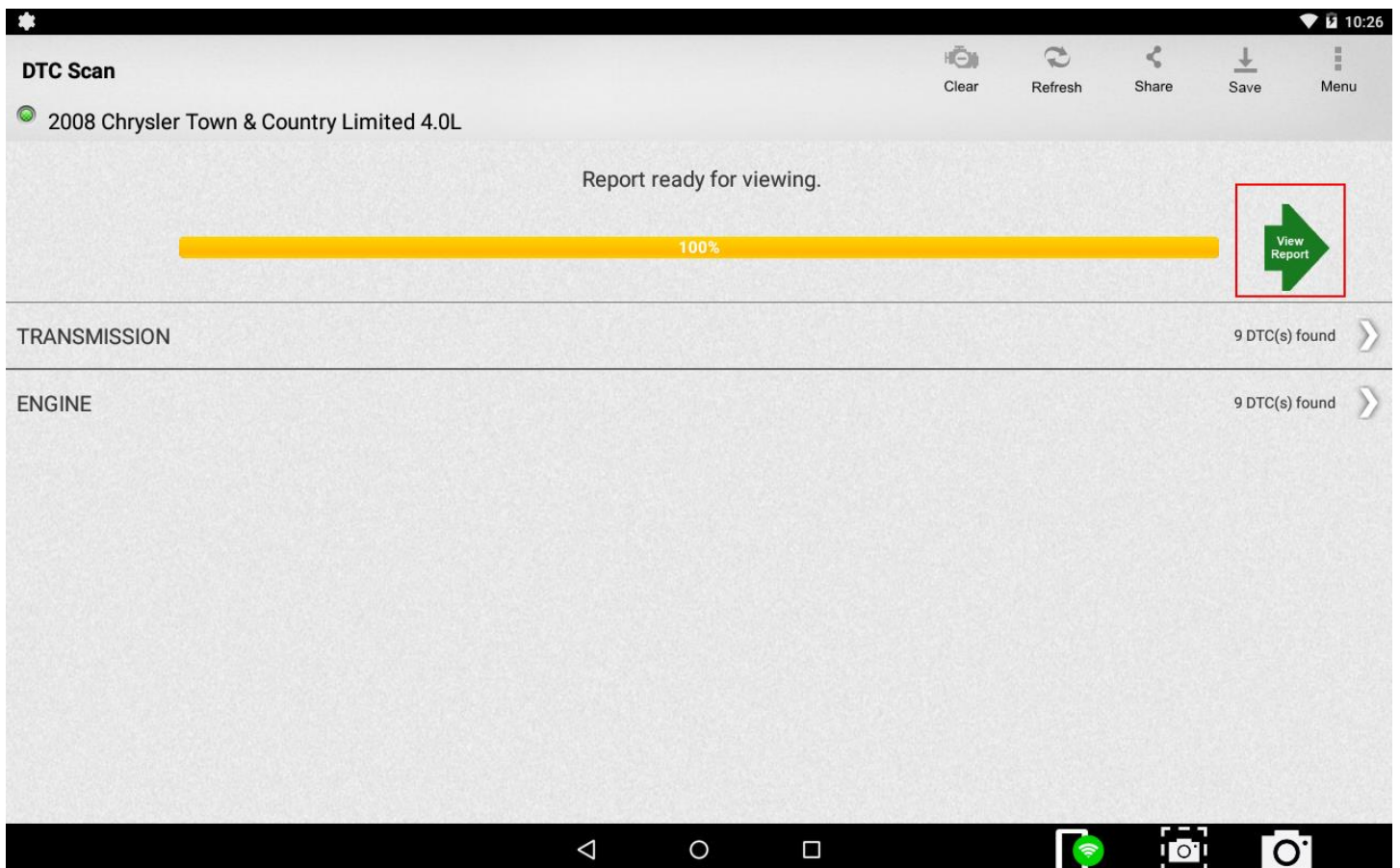
For devices that are equipped with a camera, the DTC Scan and Automated System Test reports will now allow you to add images to your report. This works on multiple controller reads only.

Step 1: Run the Scan you are interested in. Tap on one of the options below, select your controllers if performing a “Select Systems” scan and then tap on “Continue”:

Scan Name	Option	Notes:
All Systems DTC Scan	 Read DTCs All Systems	Reads the DTCs on all systems on the current vehicle.
Select System DTC Scan	 Read DTCs Select Systems	Reads the DTCs on only the selected systems on the current vehicle. NOTE: At least 2 controllers are required to create a multi-system report that includes this new feature.
Automated System Test	 Automated System Test	Reads the DTCs on all systems and performs an Enhanced OBDII scan on the current vehicle.



Step 2: Allow the scan to finish and tap on “View Report”:



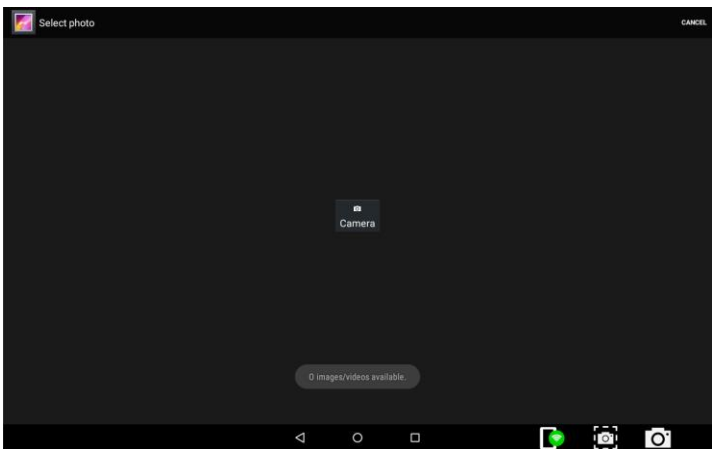
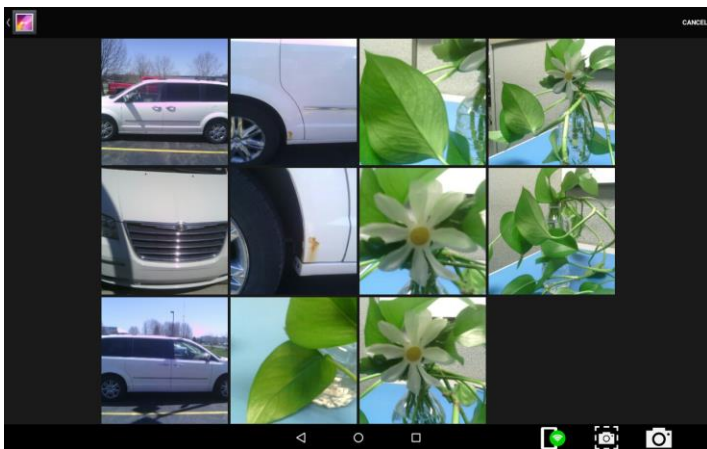
Step 3: Tap on the “Add” icon under the “Add Image(s) to Report” section:



Step 4: Tap on an image from your gallery or use the camera icon to take a picture:

If you already have images in your gallery:

If your gallery is empty:



To take a new picture, tap on the “Camera” icon shown in the bottom bar:



When using the camera option to take one or many pictures, tap the “Back” button to be brought to the list of images in your gallery and tap on the image you want to insert.

Step 5: Save Report or Add more images:

At this point, you can either save the report using the “Save” button or add more images using the “Add” icon.

Please note that until the report has been “Saved” the informational message in red will let you know that you must tap Save to keep the changes.



Add up to 4 images:

DTC Scan | Report Clear Refresh Share Save Menu

2008 Chrysler Town & Country Limited 4.0L

Add Image(s) to Report



* Report has changed, please tap save to keep changes. Tap on image to remove from report.

TRANSMISSION

P0078 Exhaust Valve Control Circuit (Bank 1)	Active
P0560 Battery System Voltage	Active
P0613 Internal Transmission Processor	Active
P0078 Exhaust Valve Control Circuit (Bank 1)	Pending
P0560 Battery System Voltage	Pending
P0613 Internal Transmission Processor	Pending
P0078 Exhaust Valve Control Circuit (Bank 1)	Stored
P0560 Battery System Voltage	Stored

With 4 images shown and the report being saved:

DTC Scan | Report

2008 Chrysler Town & Country Limited 4.0L

Add Image(s) to Report

TRANSMISSION

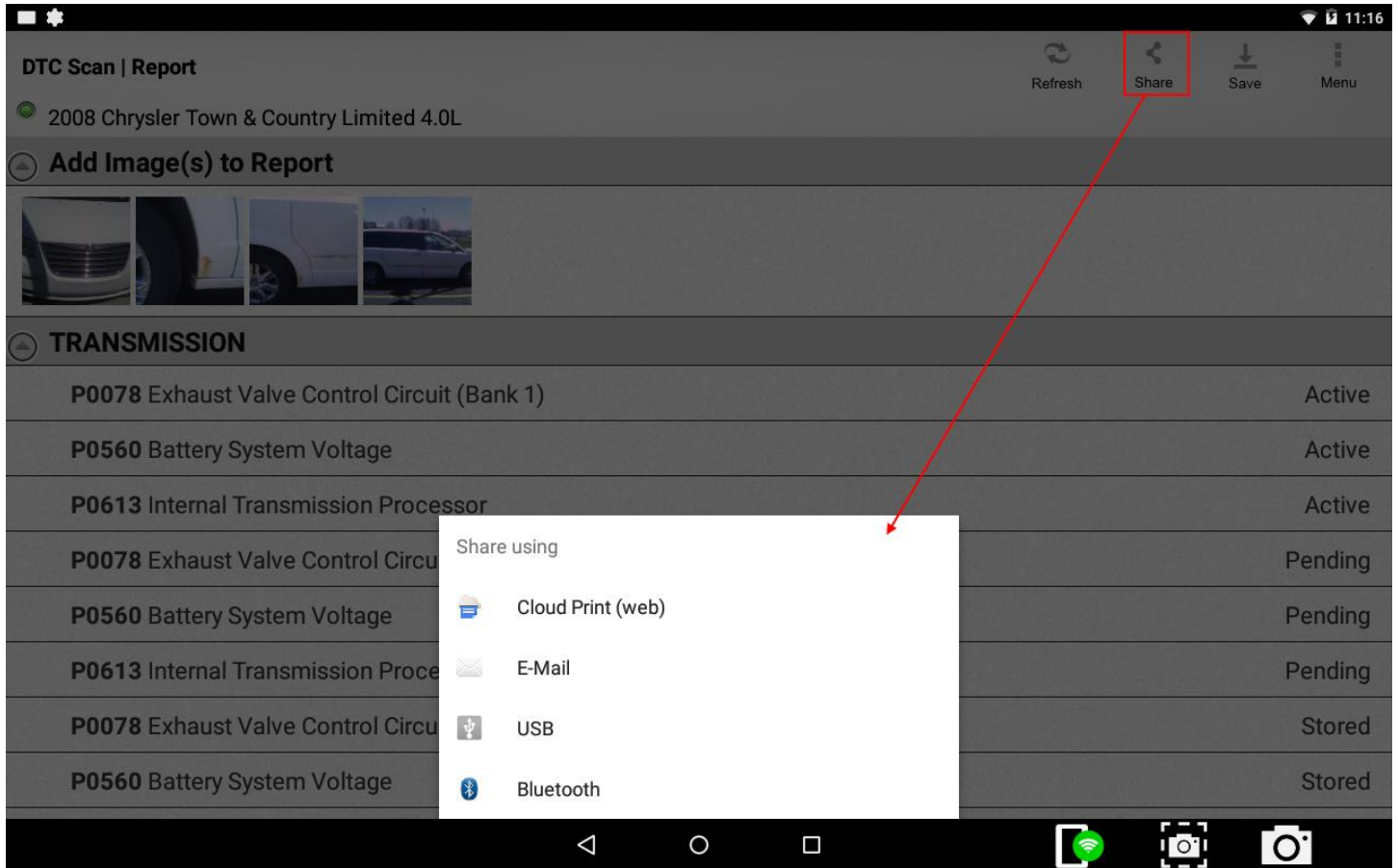
P0078 Exhaust Valve Control Circuit (Bank 1)	Active
P0560 Battery System Voltage	Active
P0613 Internal Transmission Processor	Active
P0078 Exhaust Valve Control Circuit (Bank 1)	Pending
P0560 Battery System Voltage	Pending
P0613 Internal Transmission Processor	Pending
P0078 Exhaust Valve Control	Stored
P0560 Battery System Voltage	Stored

allSystemDtcScanReport_2008_Chrysler_Town_Country___04302018194611.htm
I report was saved. Please view under 'Saved Diagnostic Data' from Home screen

Step 6: Share the Report immediately or later:

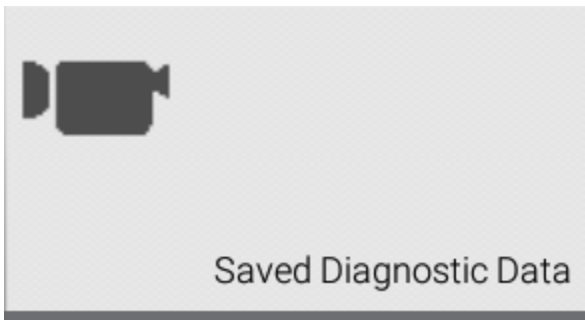
Share immediately:

Share this report immediately using the “Share” button and the options provided:



Share Later:

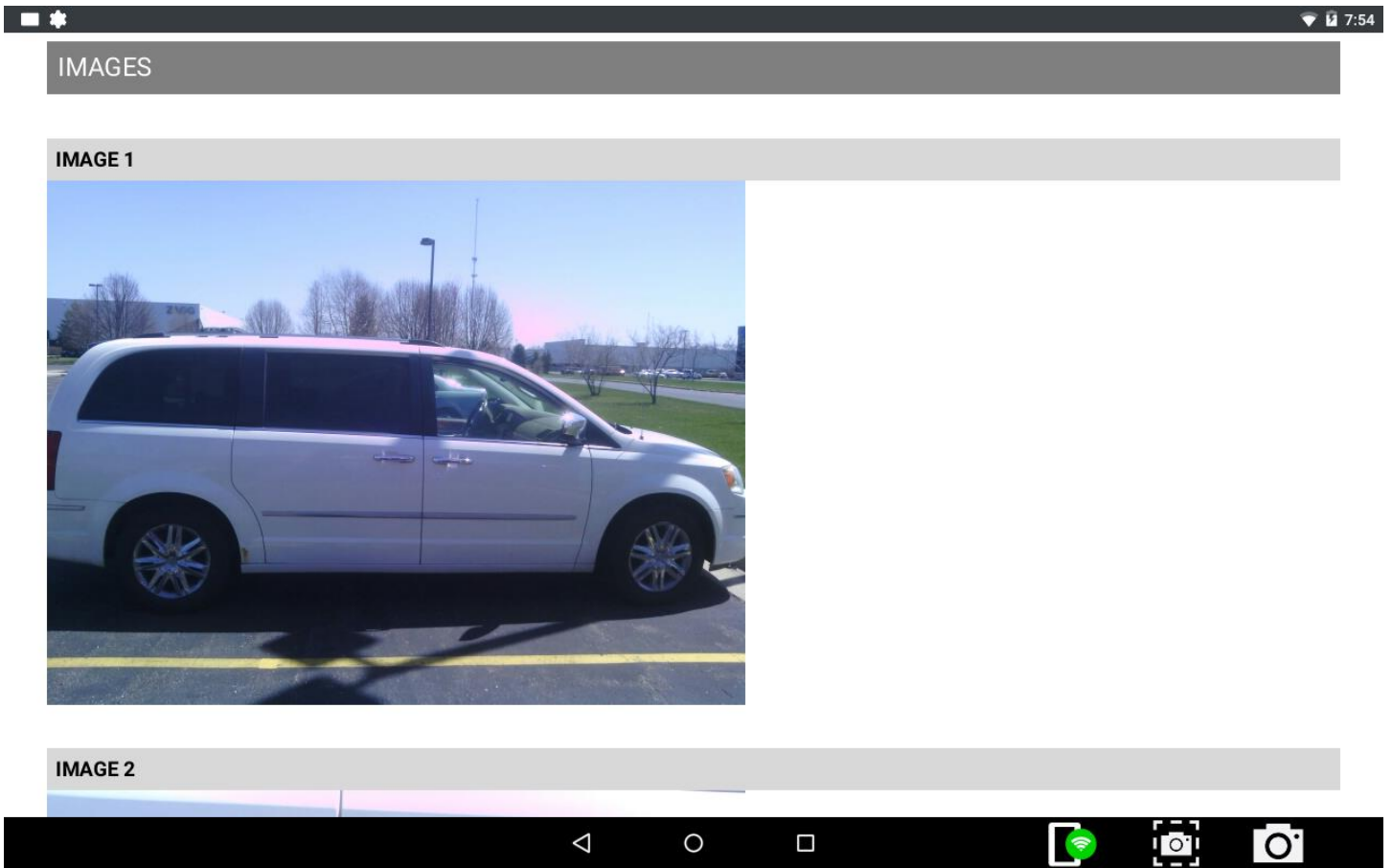
This report can be both viewed and shared later from "Saved Diagnostic Data":



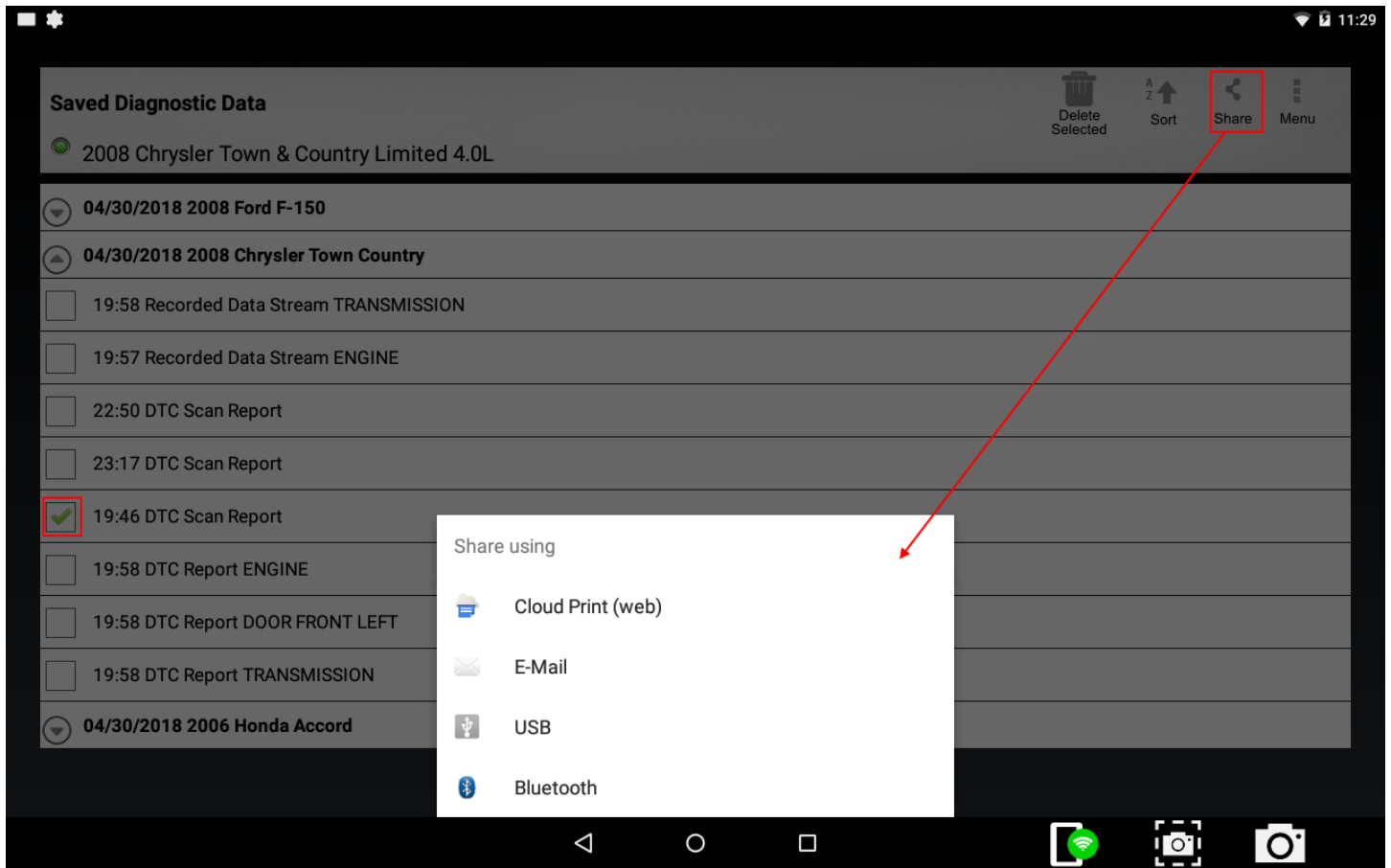
To view the report, locate the item you want to view and tap on the item to open up in a Browser view:



Scroll to the bottom to view the "Images":



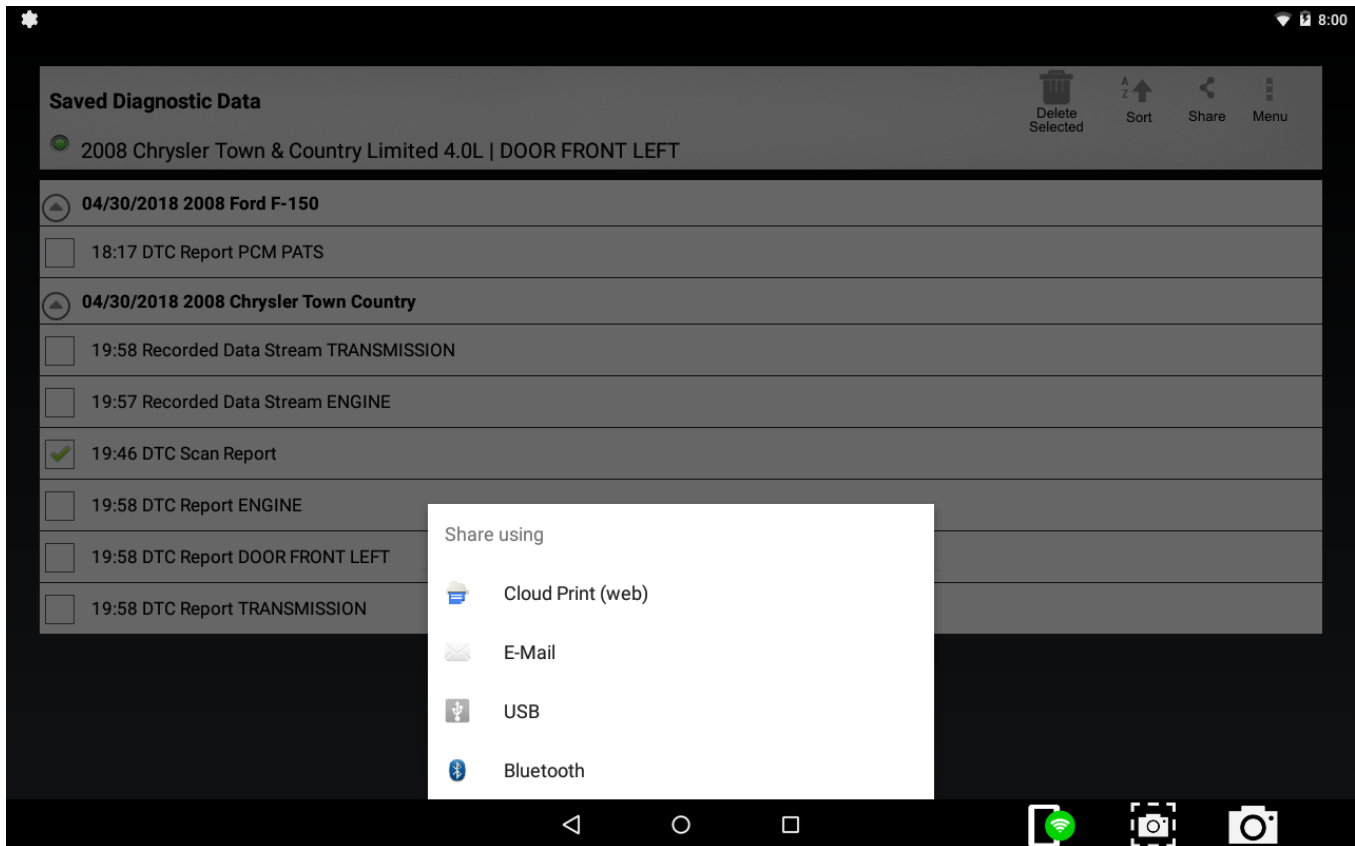
To share the report, tap on the checkmark of the item and then tap “Share” to bring up more options:



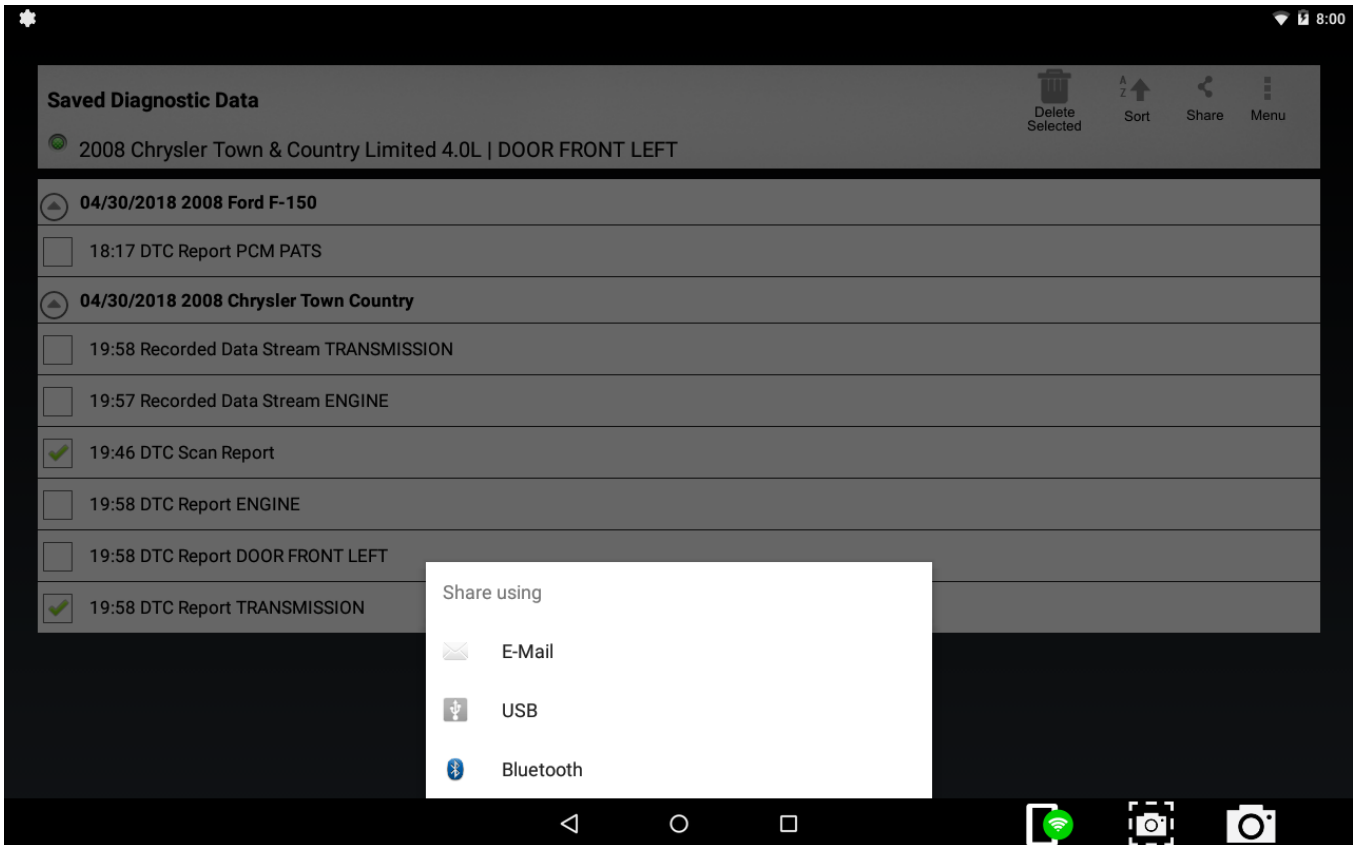
Saved Diagnostic Data

Improved Sharing capabilities.

When a single report is selected, the Share functionality has been improved to include all of the usual Share features:



When multiple reports are selected, the Share functionality is still supported by most features, except Cloud Print which only supports one file at a time:



NOTE: That Recorded Data Stream cannot be shared and the USB share option is only available if the USB stick is inserted prior to clicking "Share".

Improved Sorting capabilities.

The Reports and Recorded Data Stream are grouped by the date and the Year and Make of the vehicle. Heavy Duty and OBDII Diagnostic Data will be grouped by the date and then either "Heavy Duty" or "OBDII" designation:

- 01/23/2018 Heavy Duty**

- 01/23/2018 2004 Chevrolet Express 1500**

- 01/16/2018 2005 Pontiac Grand Prix**

- 01/15/2018 2009 Saturn Vue**

- 01/12/2018 2006 Ford Fusion**

- 01/12/2018 2004 Toyota Corolla**

- 01/12/2018 2004 Chevrolet Express 1500**

- 01/10/2018 2008 Chrysler Town Country**

- 01/10/2018 2004 Chevrolet Express 1500**

- 02/08/2018 OBDII**

- 02/08/2018 2004 Chevrolet Express 1500**

- 02/08/2018 2002 Dodge Ram Van 2500**

Reports that have been renamed or that were created in earlier software versions will appear under "Older Records". These reports will only be sorted by the date they were created:

- Older records**

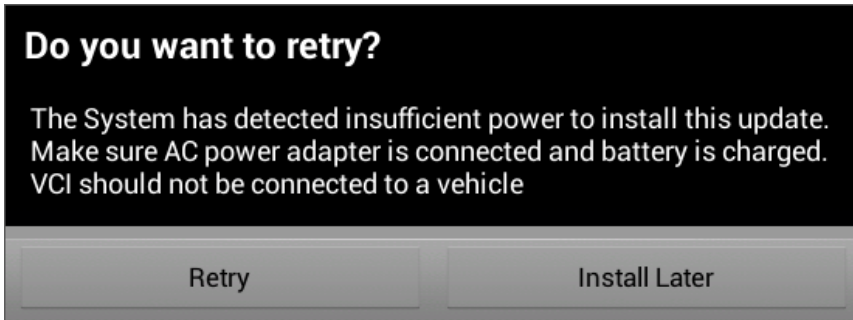
- Kia DTCs_ShopTest_01-08-2018

- Chevy_Cruze_DTCs_Repair_01-23-18

- Ford__Expedition_02-15-18

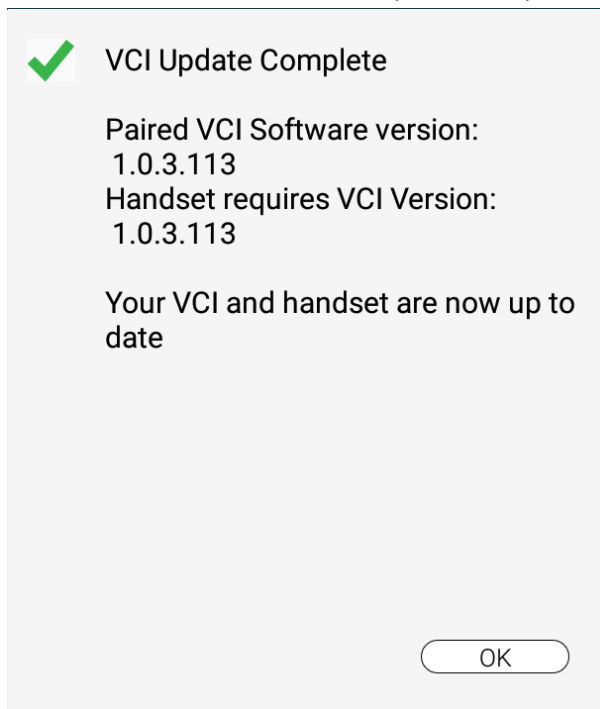
Software Update

During a software update, the VCI should not be connected to a vehicle. This is now made clear when the user is asked to retry:

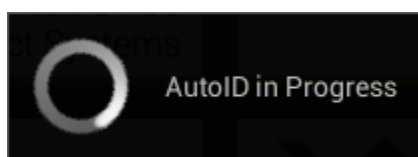


Other System Improvements and Fixes

- User can now properly update their User Details in Settings if they registered their device prior to 3.0.0.13 Release.
- The user will now see the "VCI Update Complete" Message after a VCI update.



- Fixed instances in which the "AutoID in Progress" would stay up forever when switching vehicles in the Vehicle Menu:



- Fixed navigation issue which allows the user to properly return to the DTC Information screen when viewing Online Resources.

End of document.