

Version 2.2.0.31

Overview:

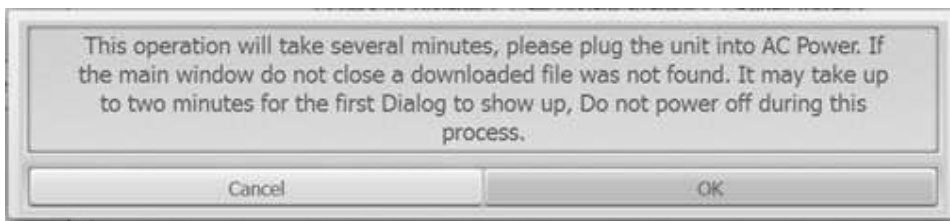
The new version 2.2.0.31 contains a major coverage release! Also provided are selected highlights of new features, improvements, and fixed defects reported by technician. You may notice many more in the software that are just too numerous to identify individually. Many thanks for the useful feedback we are receiving. More coverage and enhancements on the way!

Auto ID Feature Improvements:

Significant improvements continue to **Auto ID** increasing the performance and function. CAN protocol vehicles now ID in **LESS THAN 5 SECONDS!** Slower vehicle protocols also improved over 100%!

Tool Update Process Improvements:

A new warning message has been added informing the user that the Install is a long process as shown below.



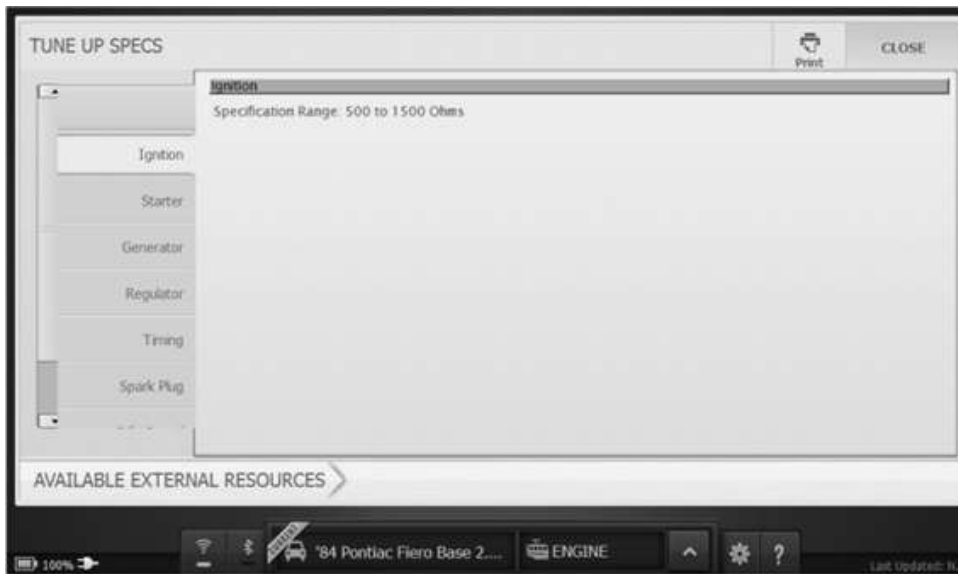
A new progress bar has been added for "Install Updates" as shown below. After about 30-50 seconds, the installation process will update the status in the progress indicator accordingly.



Repair Information Improvements:

Scroll bar has been added for Tune Up Spec.

For some vehicles (typically older ones) occasionally the list of Tune Up Spec items in the list was too long to fit on the screen. A scroll bar has been added to the left of the side panel for easy selection of Tune Up Spec item when the list is long.



New Vehicle Coverage:

The focus of version 2.2.0.31 Domestic, Asian and European release was:

- New coverage added for 2014 Model Year GM vehicles
- New coverage added for 2014 Model Year Ford vehicles
- New coverage added for 2014 Model Year Toyota vehicles
- Expanded ECU coverage for 1996-2012 Model Year VW/Audi vehicles
- Expanded ECU coverage for 2006-2013 Toyota/Lexus/Scion vehicles, including 4WD, ACCESSORY GATEWAY, ELECTRIC POWER STEERING, GATEWAY, IMMOBILIZER, POWER SOURCE CONTROL, SMART KEY, THEFT DETERRENT, REMOTE ENGINE STARTER, PRE-COLLISION and others
- New coverage for VW/Audi vehicle and system specific tests, such as DTC 01486 ESP Function Test for ABS, EPB Caliper Open and Close tests for PARKING BRAKE (53) and Key FOB Matching for CENTRAL CONVENIENCE (46)
- New coverage for tests required when replacing the EHB module assembly on Mercedes Sensotronic Brake systems, including EHB Brake Bleed, EHB Deactivate, EHB Activate, and Bosch exclusive procedure instructions
- New coverage for Battery Replacement tests required on some Land Rover and Volvo vehicles after replacing the battery. More Battery Replacement tests coming soon!



- Expanded coverage for Ford Battery Monitor System Reset for 2011-2013 vehicles
- Added coverage for 1,799 new systems
- Added coverage for 4,138 new vehicle-ECU combinations
- Added 156 new Adjustment type tests
- Added 795 new Actuation type tests
- More OEM specific descriptions for OBDII Mode 6 parameters for Ford, Nissan and Toyota

New Coverage – USA Domestic

General Motors / Saturn Coverage

- New coverage added for 2014 Model Year vehicles
- Expanded coverage for HVAC/Climate Control and Instrument Panel tests
- New coverage for Reprogram Injector Flow Rates for 2006-2014 Duramax diesels, required after replacing an injector
- 1,384 new systems covered
- Added 1584 new vehicle-ECU configurations
- 439 new Actuation type special tests, including:
 - ABS Pump Motor
 - ABS Solenoids
 - Lamp tests
 - Gauge Sweep tests
 - CMP Actuator tests
 - Compression Test
 - Cooling Fan
 - Cylinder Power Balance
 - DPF Regeneration Enable
 - Driver Seat tests
 - EVAP Leak Detection Pump
 - EVAP Purge Solenoid
 - EVAP Service Bay Test
 - EVAP Test
 - EVAP Vent Solenoid
 - Fan tests
 - Fuel Injector Balance
 - Fuel Pump
 - O2 Sensor Heater tests



- Diesel Reductant tests
- Hybrid/EV Battery tests
- Transmission solenoids
- TCC tests
- Transmission Gear
- HVAC tests
- Instrument Cluster tests
- ATC Clutch control tests
- Parking Brake Service Apply and Release tests
- 102 new Adjustment type special tests, including:
 - Reprogram Injector Flow Rates
 - Automated Brake Bleed
 - Brake Pedal Position Sensor Learn
 - Brake Pressure Sensor Calibration
 - CAN Bus Configuration Learn
 - Clear Window Learned Values
 - Clutch Pedal Position Learn
 - Configure New Module
 - Control Module Reset
 - Crankshaft Learn
 - DPF Service Regeneration
 - Fuel Composition Reset
 - Fuel Filter Life Reset
 - Fuel Trim Reset
 - HVAC Actuators Learn
 - Hybrid/EV Battery Pack tests
 - Idle Learn Reset
 - Learn Pedal Softstops
 - Oil Life Reset
 - Park Brake Cable Replacement Procedure
 - Program Key Fob tests
 - Reductant System tests
 - Reset Transmission Adapts
 - Setup New RCDLR
 - Steering Wheel Angle Sensor Learn
 - Tire Pressure Sensor Registration



- Transmission Adaptive tests
- Yaw Rate Sensor Learn

Ford Coverage

- New coverage added for 2014 Model Year vehicles
- Expanded coverage for Battery Monitor System Reset for 2011-2013 vehicles
- 272 new systems covered
- 484 new vehicle-ECU configurations
- 288 new Actuation type special tests, including:
 - A/C Servo Position
 - Air Mode Actuator
 - Door Locks
 - Warning Lamps
 - Battery Saver Relay
 - Gauge Sweep tests
 - Desired Camshaft Angle
 - Electric Motor Coolant Pump
 - EVAP tests
 - Fuel Injector tests
 - Fuel Pump
 - Power Balance
 - Relative Compression
 - Blend Door tests
 - Trans Shift solenoids
- 9 new Adjustment type special tests, including:
 - Allow Central Configuration Data Parameter Brake Pedal Calibration test
 - Automated Bleed
 - Battery Monitor System Reset
 - Calibrate Longitudinal Accel Sensor
 - DPF Regen Suspension
 - SCR tests
 - Yaw Rate Sensor Calibration
- 6 new Ford specific descriptions for OBDII Mode 6 parameters



New Coverage – USA Asian

Honda Coverage

- 1 new Adjustment type special test for Differential Torque Setup

Nissan Coverage

- 12 new Nissan specific descriptions for OBDII Mode 6 parameters

Subaru Coverage

- 2 new systems covered - BODY INTEG MOD and TRANSMISSION
- 6 new vehicle-ECU configurations

Toyota Coverage

- New coverage added for 2014 Model Year vehicles
- Expanded ECU coverage for 2006-2013 vehicles, including:
 - 4WD
 - ACCESSORY GATEWAY
 - ELECTRIC POWER STEERING
 - GATEWAY
 - IMMOBILIZER
 - POWER SOURCE CONTROL
 - SMART KEY
 - THEFT DETERRENT
 - REMOTE ENGINE STARTER
 - PRE-COLLISION
- 83 new systems covered
- 1,533 new vehicle-ECU configurations
- 6 new Actuation type special tests, including:
 - Starter Relay
 - Battery Cooling Fan
 - Immobilizer Indicator
 - Inspection Mode
 - Security Indicator
 - Water Temp Meter Operation
- 25 new Toyota specific descriptions for OBDII Mode 6 parameters



New Coverage – USA European

Audi Coverage

- Expanded ECU coverage for 1998-2012 Model Year vehicles
- New coverage for UDS protocol Engine, Transmission and All Wheel Drive systems for 2009-2012 vehicles.
- New coverage for vehicle and system specific tests for UDS protocol Engine and Transmission systems, including:
 - Adaption of Clutch Slip Point
 - Calibration of Clutch Valves
 - Calibration of Main Pressure Valve
 - Reset of Adaption Values
 - Throttle Position Adaptation
- New coverage for vehicle and system specific tests, including:
 - DTC 01486 ESP Function Test for ABS
 - EPB Caliper Open and EPB Caliper Close for PARKING BRAKE (53)
- 27 new systems covered.
- 265 new vehicle-ECU configurations.
- 20 new Actuation type special tests including
 - DTC 01486 ESP Function Test
 - EVAP Purge Valve Functional Check
 - EVAP System Pressure Check
 - Intake Manifold Runner Flap
 - Oxygen Sensor check tests
 - Rail Pressure Reduction
 - Test of Knock Sensors
 - VVLI Functional Check
- 18 new Adjustment type special tests, including:
 - EPB Caliper Close
 - Security Access(16) Adaptation(10)
 - Security Access(16) Basic Settings (04)
 - Adaption of Application Point
 - Adaption of Clutch Slip Points
 - Calibration of Clutch Valves
 - Calibration of Main Pressure Valve
 - First Filling of Fuel System



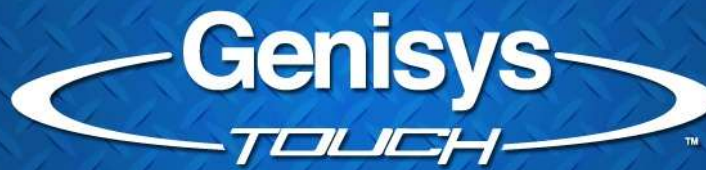
- Reset of Adaption Values
- Throttle Position Adaptation

Mercedes Coverage

- New coverage for tests required when replacing the EHB module assembly on Sensotronic Brake systems, including:
 - EHB Brake Bleed
 - EHB Deactivate
 - EHB Activate
 - Process Instructions
- 7 new Actuation type special tests, including:
 - Backup Circuit Brake Switch
 - EHB Activate
 - EHB Deactivate
 - Bosch Exclusive Procedure Instructions
- 1 new Adjustment type special test for EHB Brake Bleed

Volkswagen Coverage

- Expanded ECU coverage for 1996-2012 Model Year vehicles
- New coverage for UDS protocol Engine, Transmission and All Wheel Drive systems for 2009-2012 vehicles.
- New coverage for vehicle and system specific tests for UDS protocol Engine and Transmission systems, including:
 - EVAP Purge Valve Functional Check
 - EVAP System Pressure Check
 - Intake Manifold Runner Flap
 - Oxygen Sensor check tests
 - Rail Pressure Reduction
 - Test of Knock Sensors
 - VVLI Functional Check
 - Adaption of Application Point
 - Adaption of Clutch Slip Points
 - Calibration of Clutch Valves
 - Calibration of Main Pressure Valve
 - First Filling of Fuel System
 - Reset of Adaption Values
 - Throttle Position Adaptation
- New coverage for vehicle and system specific tests, including:



- DTC 01486 ESP Function Test for ABS
- EPB Caliper Open and EPB Caliper Close for PARKING BRAKE (53)
- Key FOB Matching for CENTRAL CONVENIENCE (46)
- 29 new systems covered.
- 192 new vehicle-ECU configurations.
- 20 new Actuation type special tests including
 - DTC 01486 ESP Function Test
 - EVAP Purge Valve Functional Check
 - EVAP System Pressure Check
 - Intake Manifold Runner Flap
 - Oxygen Sensor check tests
 - Rail Pressure Reduction
 - Test of Knock Sensors
 - VVLI Functional Check
- 20 new Adjustment type special tests, including:
 - EPB Caliper Close
 - Key FOB Matching
 - Security Access(16) Adaptation(10)
 - Security Access(16) Basic Settings (04)
 - Adaption of Application Point
 - Adaption of Clutch Slip Points
 - Calibration of Clutch Valves
 - Calibration of Main Pressure Valve
 - First Filling of Fuel System
 - Reset of Adaption Values
 - Throttle Position Adaptation

Volvo

- New coverage for Battery Replacement and Battery Monitor Sensor Replacement tests, required after replacing the battery, for 2011-2012 S60, 2009-2012 S80, 2009-2010 V70, 2010-2012 XC60, 2009-2012 XC70 models

Land Rover

- New coverage for Battery Replacement test, required after replacing the battery, for 2011-2012 Range Rover, Range Rover Sport and LR4 models

Technician / Customer / Engineering Reported Defect Fixes:

- GM Fixes
 - Pedal calibration tests are now fully supported.
 - Pedal calibration tests are now fully supported for Memory Seat Module for GM.
- Chrysler Fixes:
 - Transmission ECU is no longer a separate selection for 2007 Ram 2500 4x4 5.9L VIN C Truck. User will pick the PCM ECU now.
- Toyota
 - For 2001, Sienna all O2 sensors are shown properly now.
 - For 2002, LS 430 all O2 sensors are shown properly now.
 - For 2012, Camry, Engine proper data items are shown now.
 - For Lexus Parking brake apply and release tests are supported. They are called 'PKB Lock1' and 'PKB Release1' respectively.
 - For 2011, Toyota, 4Runner Electric Power Steering Controller is covered.
 - For 2011, Toyota, Camry Read/Write VIN test is fixed.
- Subaru
 - Subaru KW 4800 Baud Engine Read/Clear Codes performance is improved.
- VW/Audi
 - Fix for VAG Warning Message and "Please Wait" progress windows.



- Fix for VAG demo mode crash when VAG_TP2 protocol is not assigned to a controller.

- The random lockout defect in the following 'MAKE' screen is fixed. The user should never see this condition on their tool. Even if they previously were locked out as a result of a subscription or registration update.



Thank you for your patronage!