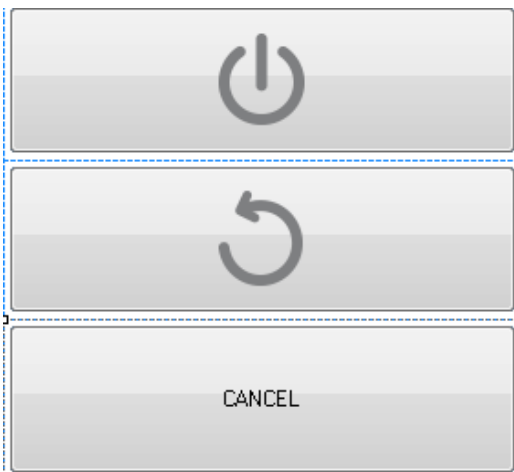


Overview:

The new version 3.4.0.19 contains a major coverage release! Also provided are selected highlights of new features, improvements, and fixed defects reported by technicians. You may notice many more improvements in the software that are just too numerous to identify individually. Many thanks for the useful feedback we are receiving. More coverage and enhancements on the way!

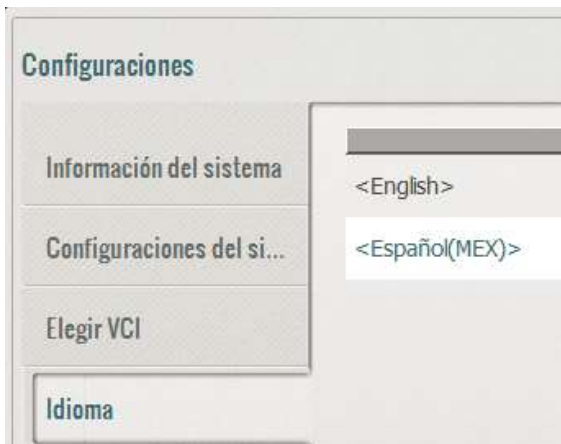
Improvements and Fixes:

- A tablet BIOS Update is done to improve the functionality of the Power button. Upon pressing the power button the following menu will pop up.



- Misfire data group for Ford CAN vehicles is added under enhanced diagnostics DataStream.
- The list of selectable languages will be displayed in the language's native text as shown below:

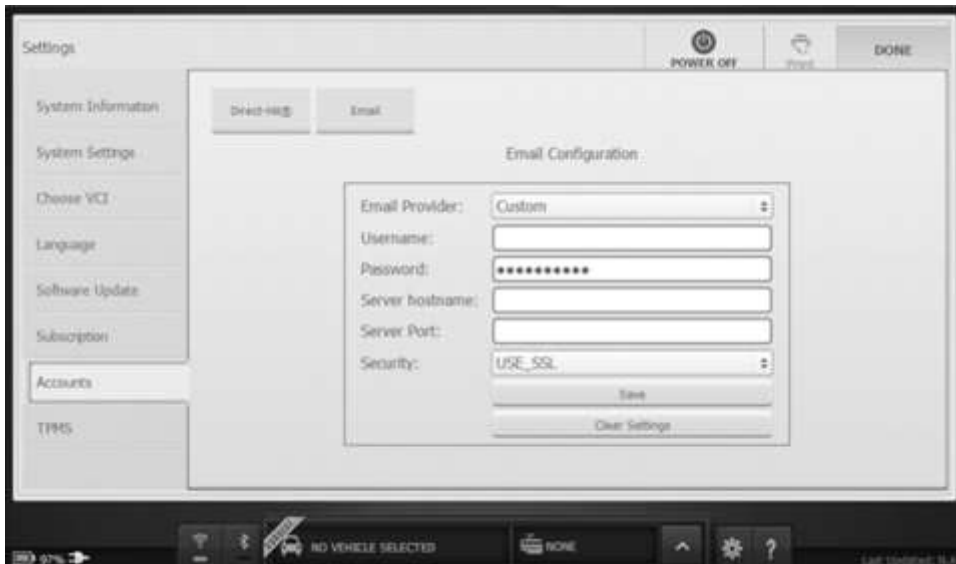
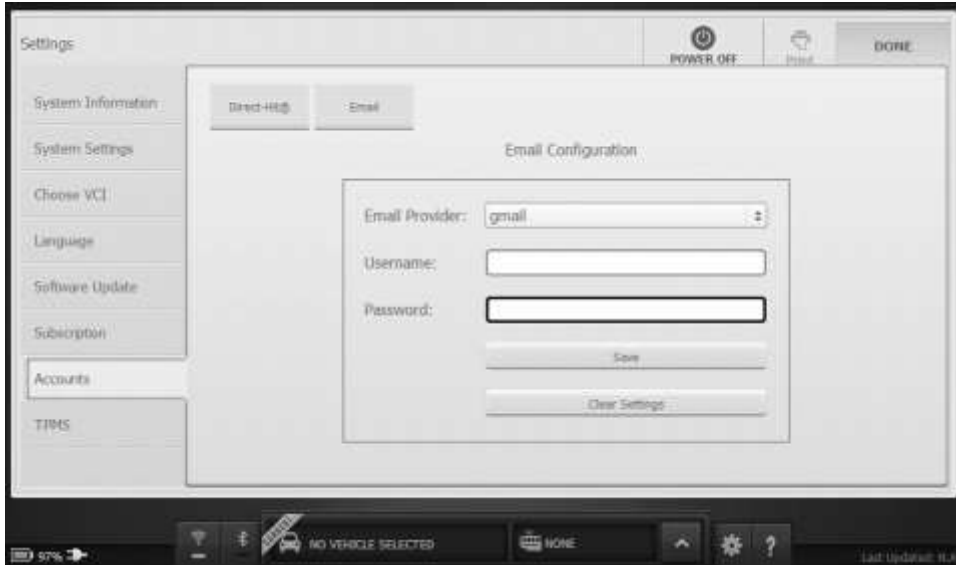
Before:

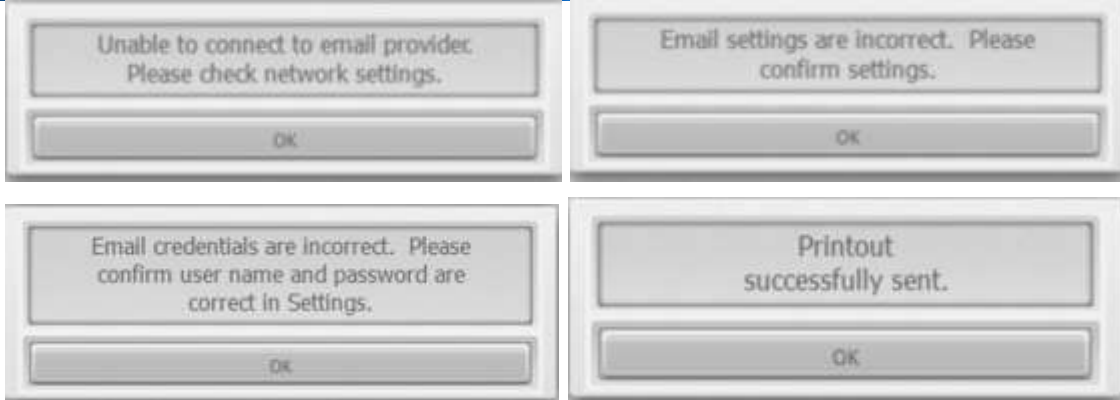


After:



- In some cases the data item display within special test was crashing the application. This is fixed.
- OBDII test re-entry and OBDII Freeze Frame functionalities are improved.
- Print to Email functionality is fixed. Following are some of the related screen shots under different scenarios:





- Communication with some of the old GM systems has been improved.
- Removed the "Undefined" header text from the VIN section of the Vehicle Info – Mode 9 tab of the GENERIC TEST (OBD II) screen.

Before:



After:



- TPMS TPR Tool IDs are displayed correctly in the TPR selection screen of the TIRE PRESSURE SENSOR REGISTRATION Special Test.



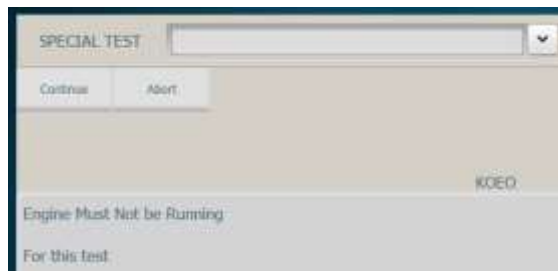
- Improved formatting of the data on the Settings screen.



- Improved OBDII Mode 9 Calibration Verification Number(s) display.
- Clear DTC operation on VAG vehicles has been improved.
- In some cases when a special test is being run, the test name in the special test drop down menu was incorrect. This is fixed. Screen shot of running a Ford Self-Diagnostics test is given below:

Before:

After:



- For some Ford systems, there were special tests appearing in the menu which are not applicable to the system. These are removed.
- Added availability to some Ford special tests to display only applicable special tests.
- An error message will be displayed to the end user when TPR fails to connect while running the Tire Pressure Sensor Registration special test.



- When performing the Tire Pressure Monitor Registration, if the TPR does not support the vehicle, GT handset will stop the registration process and display an error message to the end user indicating the vehicle is not supported and suggest to the user to update the TPR software.



- During the Tire Pressure Sensor Registration, user will now be able to enter a tire sensor ID with a leading zero.



- Pinion factor test is improved for some 1998 to 2007 Chrysler vehicles.
- During TPMS Registration, on the tire sensor id registration page, the user will now see the tire sensor battery status for each wheel.
- If the TPR TPMS Tool battery status is low any time during the TPMS Registration, TPMS Registration will be stopped and an error message will be displayed. Abort button is added for properly exiting the test.



- The badge on the Diagnostic Hub (main menu) settings button includes a count of the number of expired subscriptions plus the number of updates available. Also, the subscription tab shows the number of subscriptions expired. An instructional message has been added to the Subscriptions screen whenever an expired subscription has been detected.



New Vehicle Coverage:

- New Coverage added for 2016MY Toyota/Lexus vehicles
- Expanded coverage for Toyota/Lexus 2007-2015 Driver Assistance, Convenience, Body, Door, Seat and Audio/Entertainment/Navigation type systems
- Expanded coverage for Ford 2000-2015 Driver Assistance, Convenience, Body, Door, Seat and Audio/Entertainment/Navigation type systems
- New Coverage added for Honda 2013-2015 Forward Camera (FCW/LDW) system with Static and Dynamic Camera Calibration tests
- New Feature to show Ford Misfire Data for CAN systems in DataStream
- New Maintenance Test menu selection for Driver Assistance systems tests
- New Coverage for GM BCM Setup tests for many 2001-2008 vehicles
- New Coverage for GM Setup SDM Serial Number In BCM tests for many 1999-2010 vehicles
- Added coverage for 1,117 new systems
- Added coverage for 4,323 new vehicle-ECU combinations
- Added 107 new Adjustment type tests
- Added 561 new Actuation type tests

New Coverage – USA Domestic

Chrysler/Jeep Coverage

- 14 new Adjustment type special tests including:
 - Engine/PCM - EGR System Test, Reset Enhanced Automatic Oil Change Indicator, Reset Fuel Pressure Limit Valve Accumulators
 - Transmission/Electronic Shifter - TCM VIN Verification
- 24 new Actuation type special tests including:
 - Engine/PCM - 1st Gear Brake Torque
 - Climate (HVAC) - A/C Indicator, Blower Motor, Floor Defrost Mode Actuator Degrees, Floor Defrost Mode Actuator Position, Left Blend Actuator Degrees, Left Blend Actuator Position, Panel Mode Actuator Degrees, Panel Mode Actuator Position, Rear Defrost Indicator, RECIRC Indicator, Recirculation Door Actuator Degrees, Recirculation Door Actuator Position

- Special test fixes/improvements:
 - 1997 Dakota - fixed "would not Write VIN to NEW ECU"
 - 2000 Caravan - fixed "VIN Write test writes improper values"
 - 2001 Ram - fixed "would not write VIN"
 - 2005 Pacifica - fixed "Pinion Factor test failed"
 - 2007 Grand Caravan 3.8L PCM - fixed "NVLD Forced Monitor test should require engine running"
 - 2009 Ram 3500 6.7L PCM - fixed "Fuel Pressure Override Test is not working"
 - 2010 Nitro 3.7L - fixed "Air Condition Compressor test fails"

Ford Coverage

- Expanded coverage for Driver Assistance, Convenience, Body, Door, Seat and Audio/Entertainment/Navigation type systems
- ABS Bleed Test for 2004 F-150
- Added coverage for 677 new systems
- Added coverage for 1,348 new vehicle-ECU combinations
- 16 new Adjustment type special tests including:
 - Engine/PCM - Closed Loop Fuel Control, Reset KAM
 - Brakes/ABS - Bleed Test, EPB Configuration, Software Reset
 - Others - Tire Pressure Sensor Registration, Passenger System Reset/OCS Reset, Passenger Zero Seat Weight Test, Power Seat Calibration
- 324 new Actuation type special tests including:
 - Engine/PCM - Reductant Dosing Control tests, EGR tests, EVAP tests, Fuel Pump tests, Idle Air Control, Intake Manifold Runner Control, Power Balance, Relative Compression, Transmission tests, Injector tests, O2 Sensor Heater tests
 - Hybrid - Fan Speed Demanded
 - Transmission - Gear Command By Output State Control, Converter Pressure Control, Desired Line Pressure Control, Dynamic Pressure Control Solenoid Duty Cycle, Firm Shift, Line Pressure Control Desired, Shift Solenoids
 - Transfer Case - 4WD PWM Clutch Status, CCW Relay, Continuous Vacuum Hublock Solenoid, CW Relay, Integrated Wheel Ends Output Control, On Demand Test, Performance Shift Lamp, Rear Locking Diff Lamp Output Control Optional, Rear Locking Diff Output Duty Cycle

Optional, Shift Motor Position Sense Contact Plate Power Circuit Status, Transfer Case Contact Plate Power

- ABS/Parking Brake - ABS Pump Motor Control, Antilock Braking System Power Relay Output Status, Inlet and Outlet Solenoid tests, Traction Assist Valve tests, On Demand Test, Parking Aid Module tests
- Instrument Cluster - Lamp tests, Segment tests, Button tests, Speedometer Gauge Indicator Control, Tachometer Gauge Indicator Control, Engine Coolant Temperature Gauge, Fuel Gauge Indicator Control, Turbo Boost Gauge Pointer
- Climate/HVAC - Mode Door tests, Blower Motor tests, On Demand Test, Driver Heated Seat, Passenger Heated Seat, Rear HVAC Mode Control Input
- Body Control/GEM - Lamp and Buzzer/Warning tests, Mirror Puddle Lamps, Trunk/Liftgate Release tests, Door Lock and Unlock tests, Light and Turn Signal tests, Wiper tests, Horn tests
- Door - Driver Door Lock Unlock, Driver Mirror Left Right, Driver Mirror Up Down, On Demand Test, Passenger Mirror Left Right, Passenger Mirror Up Down, Set Memory tests
- Seat - Seat Motor tests, Mirror tests, On Demand Test, Pedal tests, Climate-Controlled Seat tests, Seat Bladder Pump Status
- Others - Power Running Board tests, Steering Column Control tests, Audio Control Module tests, Trailer Module tests
- Special test fixes/improvements:
 - Tests that the vehicle does not support will now not be shown to the user
 - 1995 Bronco - fixed "would not perform KOEO"
 - 2003 Explorer 4.0L PCM - fixed "When running the KOER self-test the EGR test is displayed as being selected"
 - 2003 Explorer 4.0L PCM - fixed "Fuel Pump Duty Cycle test cannot increase/decrease"
 - 2005 F-150 ABS - fixed "Brake Bleed test not working properly"
 - 2005 F-150 - fixed "Passenger Airbag Light test showing Error"
 - 2005 LS - fixed "Power Seat Calibration test failed"
 - 2006 Expedition 5.4L PCM - fixed Relative Compression and Power Balance tests
 - 2006 Zephyr 3.0L PCM - fixed "would not run Relative Compression test"
 - 2008 Explorer 4.0L PCM - fixed "Relative Compression test not working"
 - 2008 F-150 5.4L - fixed "Line Pressure Control Desired test fails"

- 2012 F-250 6.2L PCM - fixed "Power Balance Test showing misfire on wrong cylinder"
- 2015 C-Max Hybrid HVAC - fixed "Blower Motor Speed test not working properly"
- Other fixes/improvements:
 - 1994 Grand Marquis 4.6L - fixed "Could not communicate via OBD1 connector"
 - 1998 Navigator SUSPENSION - fixed "Could not communicate with Suspension module"

General Motors / Saturn Coverage

- Setup SDM Serial Number in SDM and Setup BCM tests for 2005 Impala
- 54 new Adjustment type special tests including:
 - Engine/PCM - Crankshaft Learn
 - Transmission - Allison TCM Fast Learn, Reset Transmission Adapts
 - Transfer Case - ATC Motor Learn
 - Brakes/ABS - Automated Bleed, Brake Pressure Sensor Calibration
 - Safety - Configure New Module, Setup New SDM, Setup SDM Serial Number In BCM, Store SDM Part Number
 - Body Control - Brake Pedal Position Sensor Calibration, Setup SDM Part Number In BCM, Setup SDM Serial Number In BCM, Tire Pressure Reset, Tire Type/Pressure Selection, Program Key Fobs, Setup BCM
 - Others -Tire Type/Pressure Selection, Vehicle Direction Camera Learn
- 20 new Actuation type special tests including:
 - Engine/PCM - Camshaft Actuator tests, Cylinder Power Balance, Injector Enable (All Cylinders), RPM Control
 - ABS/Parking Brake - Lamp tests, Solenoid tests, Pump tests
 - Suspension - Exhaust Valve, Right Rear Damper Actuator
 - Instrument Cluster - Display Test
 - Body Control - Lamp and Buzzer/Warning tests, Door Lock tests
- Special test fixes/improvements:
 - Coverage added for BCM Setup tests for many 2001-2008 vehicles
 - Coverage added for Setup SDM Serial Number In BCM tests for many 1999-2010 vehicles
 - 1997 Silverado 5.7L PCM - fixed "Cylinder Power Balance test failed"
 - 1998 Trans Am 5.7L PCM - fixed "missing EVAP Service Bay test"

- 2000 Corvette - fixed "special tests missing ACTIVATE AIS SYSTEM"
- 2001 Impala - fixed "2-3 Shift Solenoid test kicks out"
- 2002 Cavalier PCM - fixed "Injector test did not work"
- 2002 Grand Prix 3.8L PCM - fixed "Crank Learn failed"
- 2003 Impala - fixed "Crankshaft Relearn failed"
- 2003 Impala - fixed "Cylinder Power Balance, misfire data items incorrect"
- 2003 Suburban - fixed "would not perform Door Module tests"
- 2003 2500 and 3500 ABS - fixed "will not run the ABS motor"
- 2003 Yukon Denali ABS - fixed "Dump Valve tests failed"
- 2004 Silverado 5.3L PCM - fixed "Crank Learn would show pre-conditions not met"
- 2004 Rendezvous ABS - fixed "Auto Brake Bleed test states error and aborts"
- 2005 Envoy 4.2L PCM - fixed "Crank Learn failed"
- 2005 Impala SS 3.8L PCM - fixed "Crankshaft Relearn failed"
- 2005 Sierra ABS - fixed "ABS Lamp test will abort"
- 2006 Lacrosse ABS - fixed "Auto Brake Bleed test states error and aborts"
- 2006 Impala BODY/IPC - fixed "Dimming test not working"
- 2006 Trailblazer PCM - fixed "Fuel Trim Reset test will not finish"
- 2007 Impala 3.5L - fixed "would not perform the alcohol content relearn"
- 2007 Silverado - fixed "Transmission Adapt tests not functioning as expected"
- 2007 Lucerne ABS - fixed "missing Auto Bleed test"
- 2008 Express 2500 - fixed "missing Tire Size/Type test"
- 2008 Silverado Transfer Case - fixed "ATC Relearn procedure missing"
- 2008 Uplander ABS - fixed "no ABS tests available"
- 2008 G1500 4.3L PCM - fixed "Injector Balance test is skipping cylinders"
- 2013 Express 6.6L - fixed "DPF Regen test does not work"
- 2015 Express 3500 6.0L - fixed "Crankshaft relearn instructions are incorrect"
- Saturn Vue 3.6L - fixed "No test available for Steering Angle Sensor"
- Other fixes/improvements:
 - 1999 Trans Am 5.7L - fixed "Data Items display is inconsistent"

New Coverage – USA Asian

Honda Coverage

- Expanded coverage for 2013 AIRBAG, 2013 SEAT WEIGHT SENSOR and 2013-2015 FORWARD CAMERA - FCW/LDW controllers
- Added coverage for 7 new systems
- Added coverage for 82 new vehicle-ECU combinations
- 10 new Adjustment type special tests including:
 - Engine/PCM - Resolver Position Calibration
 - ABS - Sensor Cluster Calibration, VSA Sensor Neutral Position Memorization
 - Forward Camera - Dynamic Camera Aiming, Static Camera Aiming
- 1 new Actuation type special tests including:
 - ABS - Sub Throttle
- Special test fixes/improvements:
 - 2008 Accord 2.2L PCM - fixed "EVAP/Purge tests will not finish properly"
 - 2010 Odyssey Engine - fixed "EGR test needs better instructions"
- Other fixes/improvements:
 - 2005 Pilot ENGINE - fixed "Some Data Items showed NaN"

Hyundai Coverage

- New actuation type special test:
 - Engine/PCM - Variable Intake Manifold 1
- Special test fixes/improvements:
 - 2009 Sonata 2.4L ENGINE - fixed "Variable Intake Manifold 1 test failed"
 - 2009 Sonata ABS - fixed "ABS Motor test failed"

Kia Coverage

- New actuation type special test:
 - Engine/PCM - Purge Solenoid Vent

Mazda Coverage

- 4 new Adjustment type special tests including:
 - Airbag/OCS - Passenger System Reset/OCS Reset
- 48 new Actuation type special tests including:

- Engine/PCM - A/C Compressor Command, EGR tests, EVAP tests, Fuel Pump tests, Idle Air Control, Intake Manifold Runner Control, Power Balance, Transmission tests, Injector tests, O2 Sensor Heater tests
- ABS - ABS Booster Solenoid Current, Hydraulic Pump Motor, Solenoid tests, Vacuum Pump Status
- Instrument Cluster - Lamp tests ,Engine Coolant Temperature Gauge, Voltmeter Pointer Placement Command, On Demand Test
- Climate/HVAC - A/C Recirculating Servo Position Status, Left Blend Door Position, Right Blend Door Position
- Body Control/GEM - Lamp and Buzzer/Warning tests, Mirror Puddle Lamps, Trunk/Liftgate Release tests, Light and Turn Signal tests

Nissan Coverage

- 9 new Actuation type special tests including:
 - Transmission - Shift and Pressure Control Solenoid tests
 - Body Control - Key Fob Power Window Test
- Special test fixes/improvements:
 - 2011 G37 - fixed "Activate Pump test not functioning properly"
- Other fixes/improvements:
 - 1995 Pathfinder ENGINE- fixed "Could not communicate via OBD1 connector"
 - 1997 Maxima ABS - fixed "Could not communicate with ABS module"
 - 2002 Xterra ABS - fixed "Could not communicate with ABS module"
 - 2005 Murano ABS - fixed "Could not communicate with ABS module"

Toyota Coverage

- New Coverage added for 2016MY vehicle
- Expanded coverage for Driver Assistance, Convenience, Body, Door, Seat and Audio/Entertainment/Navigation type systems
- Added coverage for 406 new systems
- Added coverage for 2,893 new vehicle-ECU combinations
- 3 new Adjustment type special tests including:
 - Steering - Clear Abnormal Operation History
 - Others - Reset Memory
- 113 new Actuation type special tests including:

- Engine/PCM - Activate SL1 Solenoid, Activate the Fuel Return Pipe Valve, Activate the In-tank Fuel Pump Relay, Cylinder Balance tests, Intake Air VSV Control, SCV Duty Ratio, VVT Exhaust Linear (Bank 2)
- Transmission - Activate SL1 Solenoid
- Safety - PCS Crash Alarm Buzzer
- Transfer Case - 4WD Control Prevention Mode
- Steering - EPS Signal Check
- Instrument Cluster - Lamp tests
- Body Control - Lamp and Buzzer/Warning tests, Door Lock tests, Window tests, Light/Headlamp tests, Wiper tests, Horn tests, Mirror tests
- Doors - Door Lock/Unlock tests, Window tests, Mirror tests
- Others - Security/Immobilizer Indicator tests
- Special test fixes/improvements:
 - 2000 Tacoma - fixed "could not clear Memory"
 - 2003 Camry ABS - fixed "Signal Check Enter test will fail"
 - 2005 Camry ABS - fixed "Will not perform Brake Bleed"
- Other fixes/improvements:
 - 2005 Sequoia ABS - fixed "Could not communicate with ABS module"

New Coverage – USA European

Jaguar Coverage

- New actuation type special test:
 - Engine/PCM - Generator Regulator Control

Land Rover Coverage

- 2 new Actuation type special tests including:
 - Engine/PCM - Generator Regulator Control, Viscous Cooling Fan Pulse Width Modulation Control

Mercedes Benz Coverage

- New adjustment type special test:
 - Multifunction Camera - Camera Calibration

Volkswagen

- 12 new Actuation type special tests including:
 - Climate (HVAC) - A/C Indicator, Blower Motor, Floor Defrost Mode Actuator Degrees, Floor Defrost Mode Actuator Position, Left Blend Actuator Degrees, Left Blend Actuator Position, Panel Mode Actuator Degrees, Panel Mode Actuator Position, Rear Defrost Indicator, RECIRC Indicator, Recirculation Door Actuator Degrees, Recirculation Door Actuator Position
- Special test fixes/improvements:
 - 1999 Volkswagen Jetta TDI - fixed "Controller Coding gives error message and will not complete"

Thank you for your patronage!